

MF664Cdw, MF465dw II 在 Windows 透過 USB 連線連接印表機之驅動程式步驟
Driver installation procedure for MF664Cdw, MF465dw II in Windows (Via USB)

****注意: 安裝驅動程式前請勿接駁 USB 線，以免系統發生錯誤****
**** Please don't plug the USB cable until the driver asked to do so****

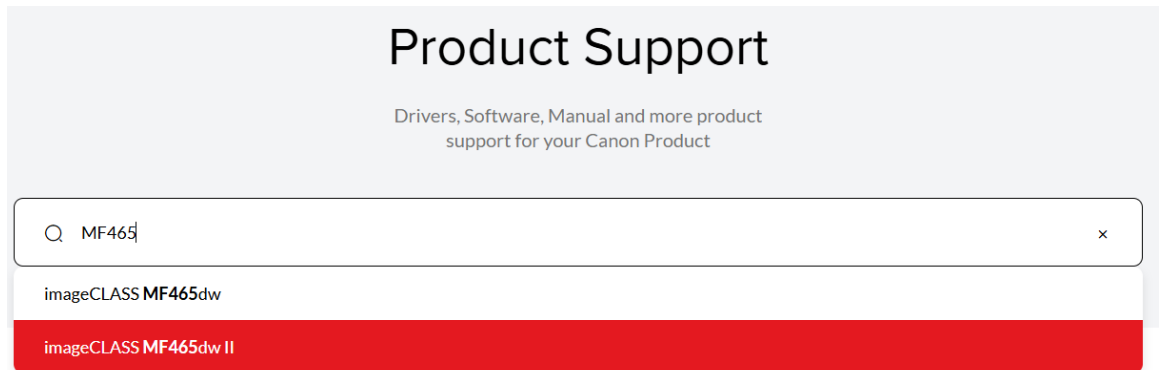
以下步驟及畫面僅供參考，實際操作畫面可能因裝置型號、系統或軟件版本而有所不同。
The following steps and screens are for reference only, and the actual operation screens may vary depending on the device model, system, or software version.

下載及安裝步驟

Driver download and Installation procedure

1. 到佳能網站 <https://hk.canon/en/support>，選擇相關的印表機型號及下載印表機的驅動程式

Go to: <https://hk.canon/en/support>, select related printer model, then download the printer driver



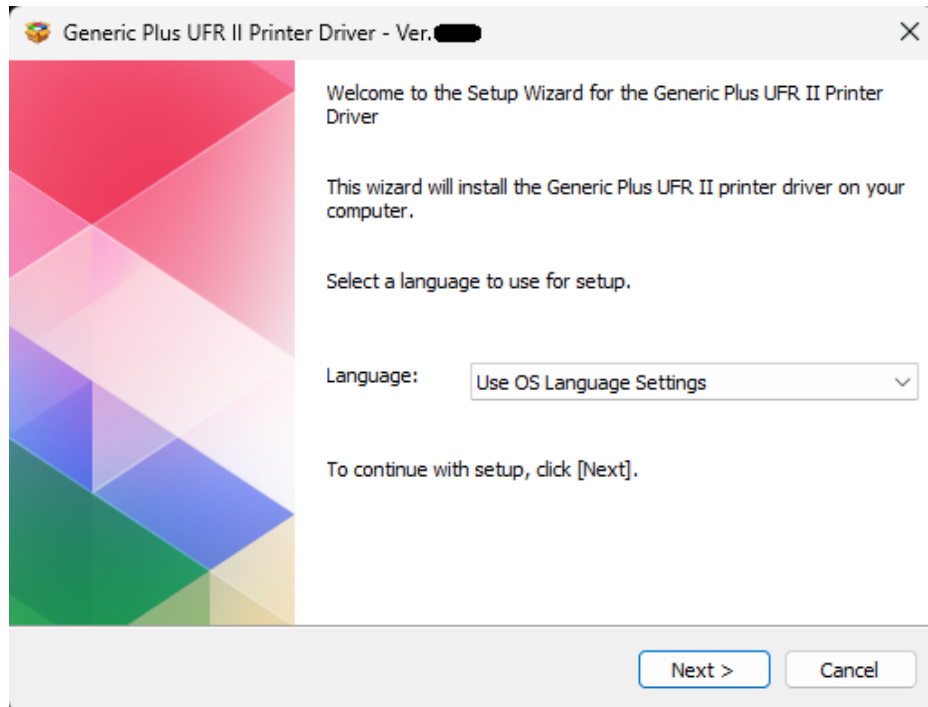
2. 選擇並下載以下檔案

Choose and download below files:

- 打印機驅動程式 / Printer Driver
[\[Windows 64bit\] Generic Plus UFR II Printer Driver VX.XX](#)
- 掃描驅動程式 / Scanner Driver
[\[Windows 64bit\] MF660 Series ScanGear MF Ver.XX.X.X.X.mfXX](#)
- 掃描軟件 / Scanning Software
[\[Windows 32bit & 64bit\] MF Scan Utility Ver.*.*](#)

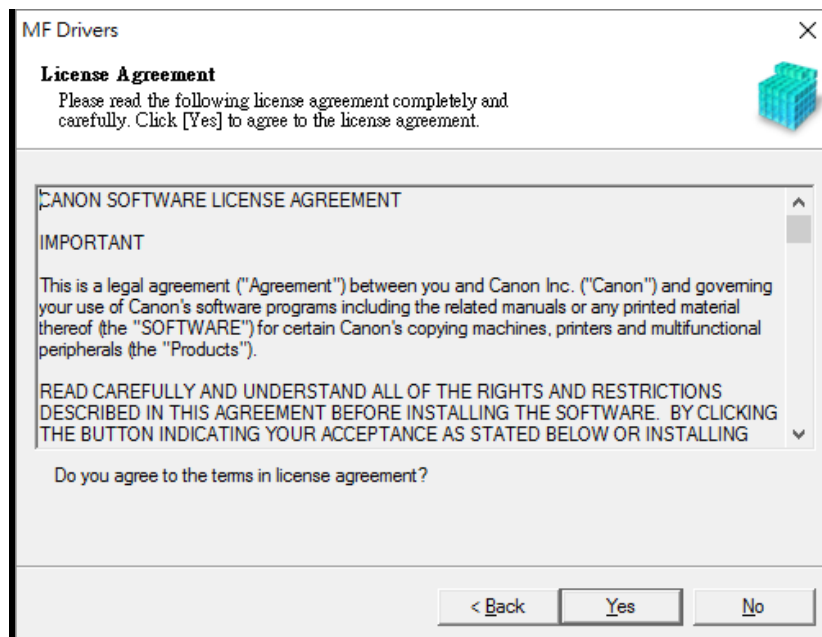
3. 執行檔案[Windows 64bit] Generic Plus UFR II Printer Driver VX.XX 內的 Setup.exe 按「Next」

Run File Setup.exe in [Windows 64bit] Generic Plus UFR II Printer Driver VX.XX, click "Next"

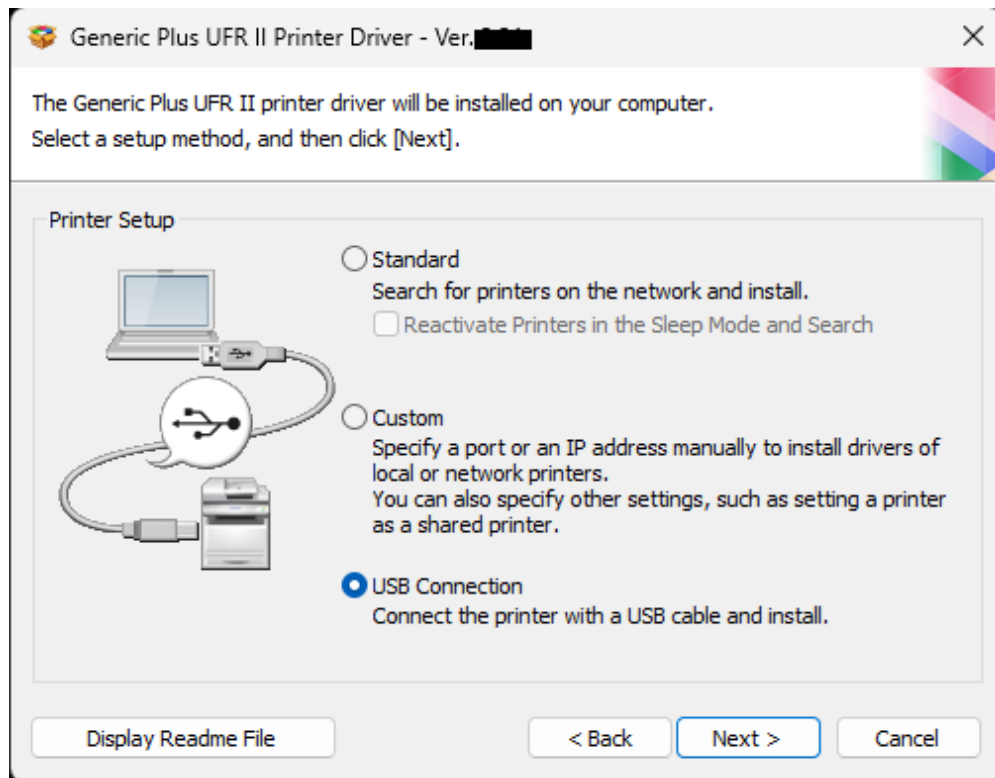


4. 按「Yes」

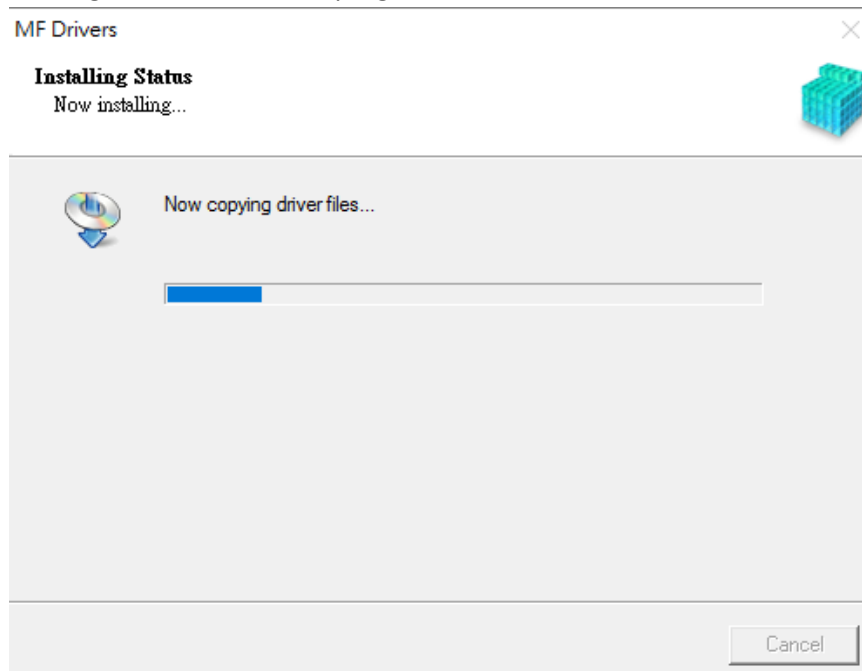
Click "Yes"



5. 選擇「USB Connection」，按「Next」
Choose “USB Connection”, click “Next”

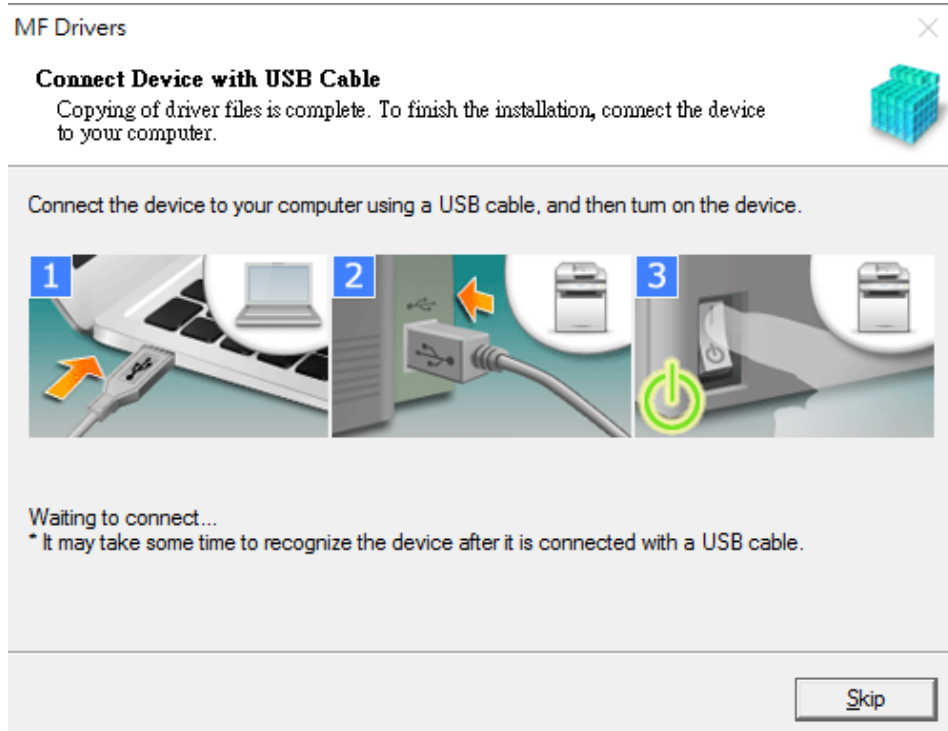


6. 等待安裝程序完成
Waiting for the installation progress



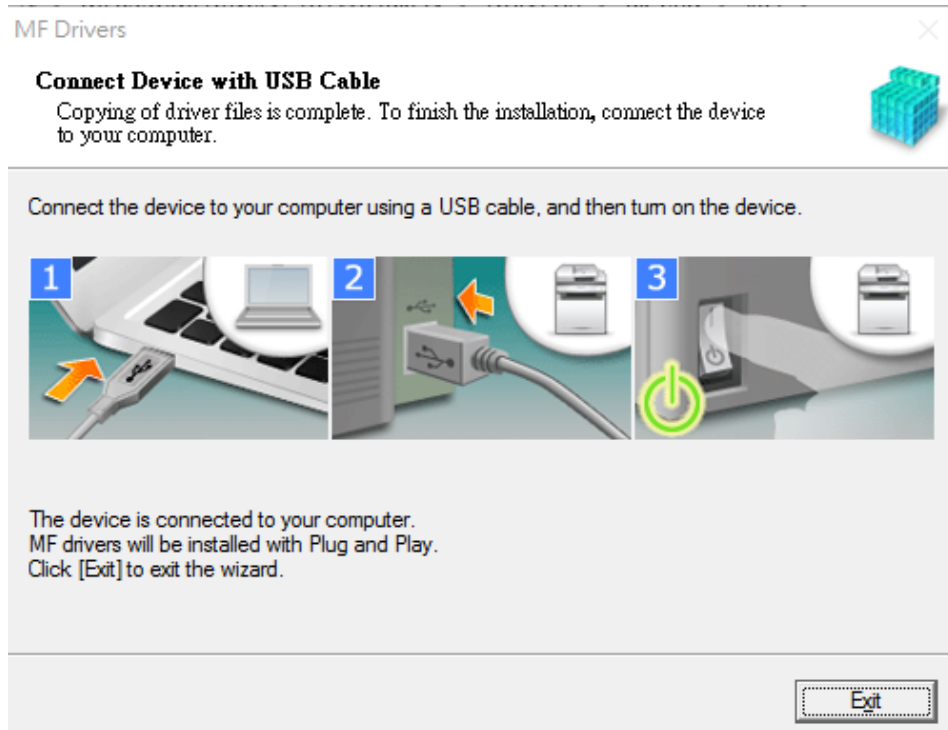
7. 接駁 USB 線及開啟印表機

Connect device with USB cable and switch on the printer



8. 成功偵測印表機後按「Exit」完成安裝

Click "Exit" to finish installation after device detected by computer.

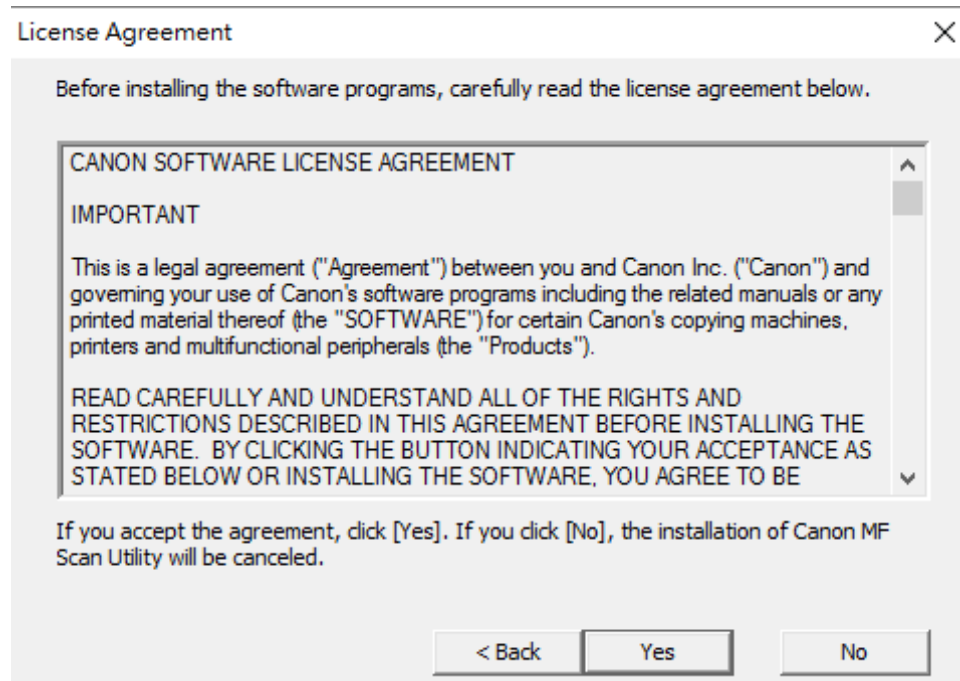


安裝掃描驅動程式 Install Scanner Driver

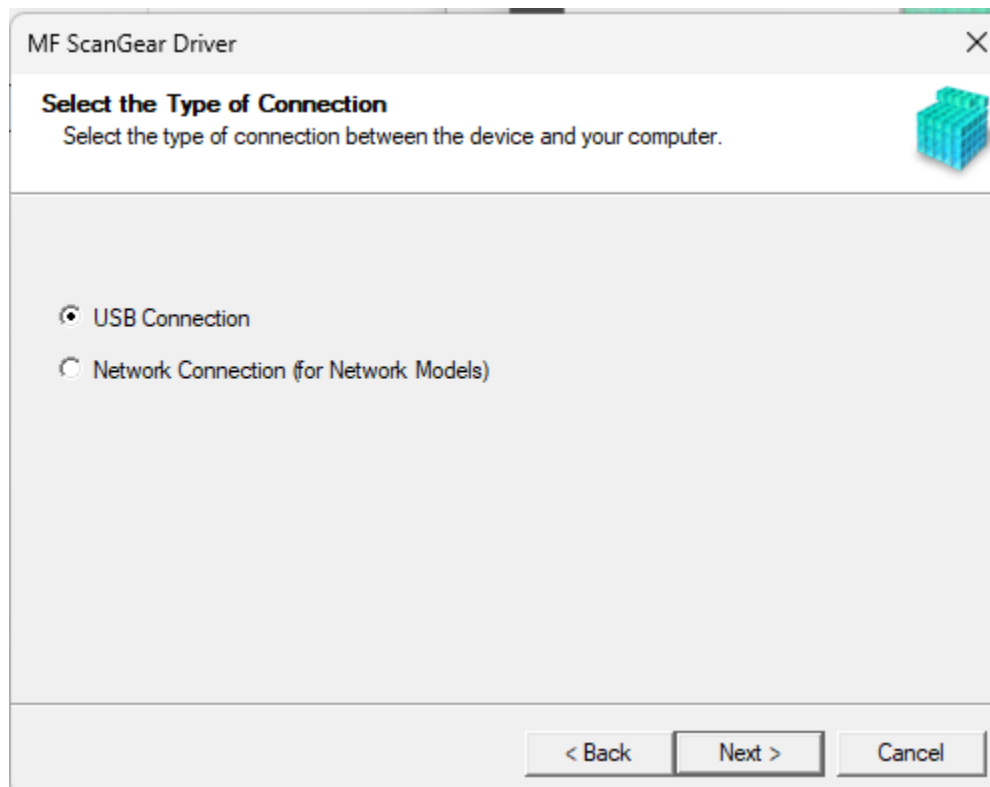
1. 執行檔案 [scangearmfvXXXXXmfXXxXXXX] 按「Next」
Run the file [scangearmfvXXXXXmfXXxXXXX] , click “Next”



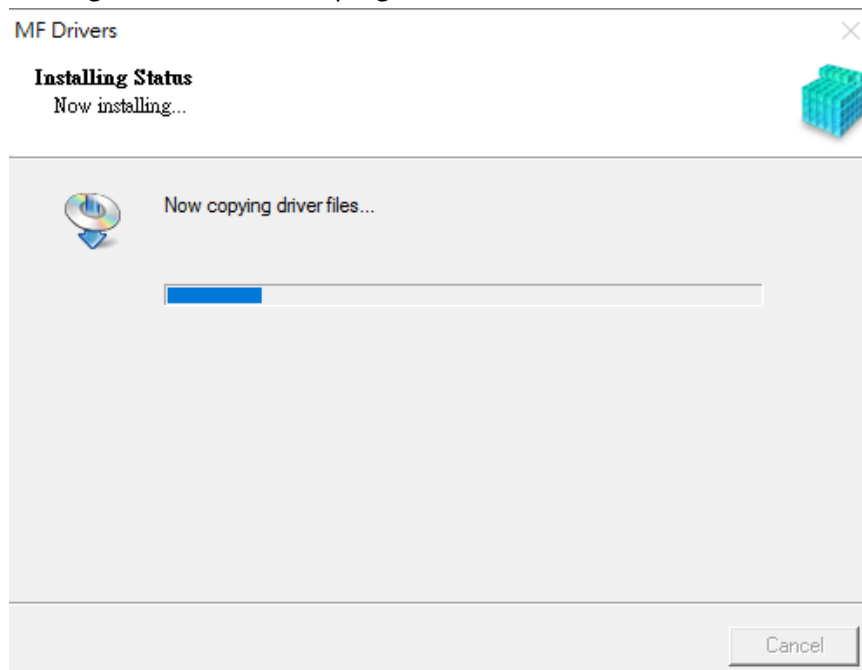
2. 按「Yes」
Click “Yes”



3. 選擇「USB Connection」，按「Next」
Choose "USB Connection", click "Next"

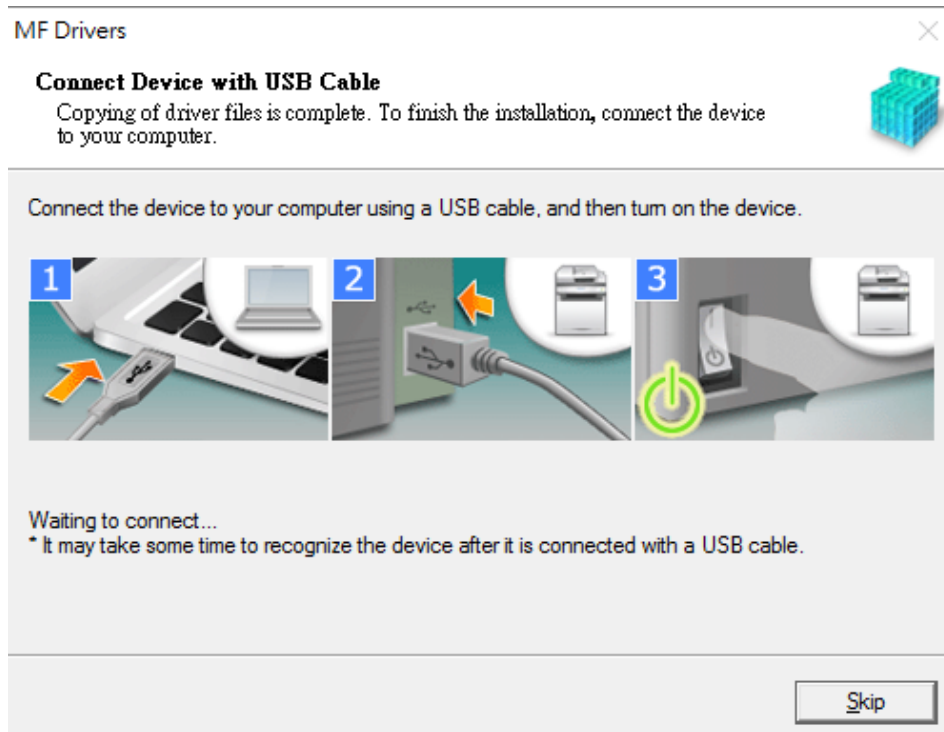


4. 等待安裝程序完成
Waiting for the installation progress



5. 接駁 USB 線及開啟印表機

Connect device with USB cable and switch on the printer



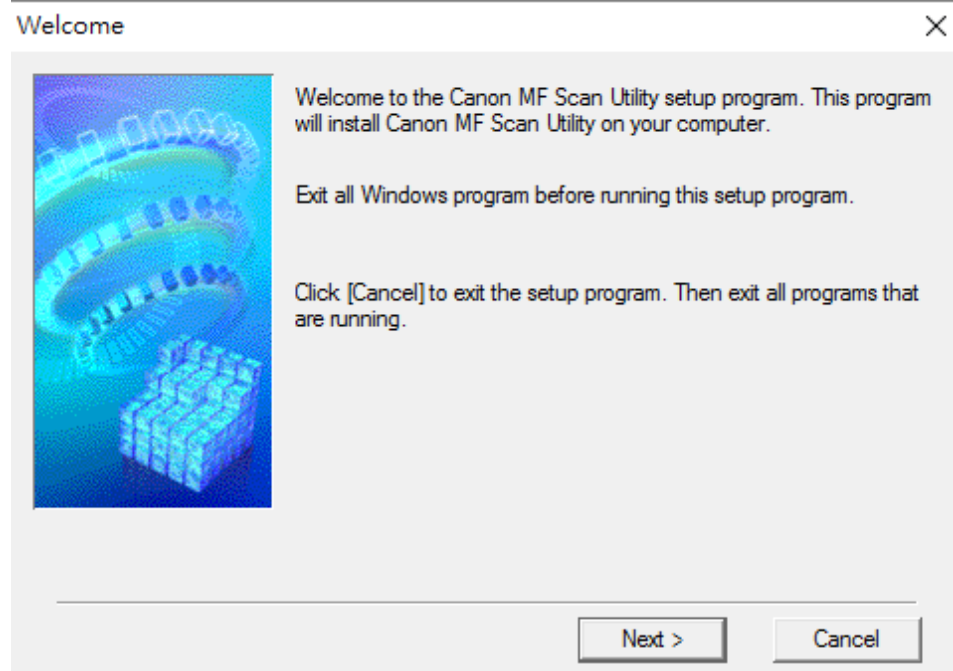
6. 成功偵測印表機後按「Exit」完成安裝

Click "Exit" to finish installation after device detected by computer.

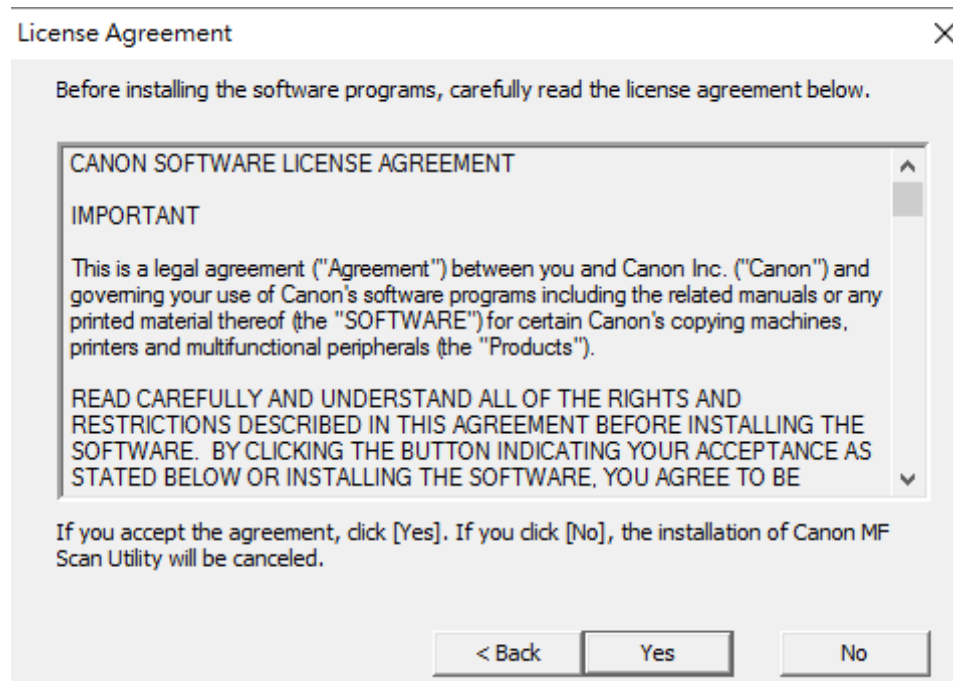


安裝掃描軟件MF Scan Utility
MF Scan Utility installation procedure

1. 執行檔案〔MFScanUtility_*****_EN.exe〕按「Next」
Run the file [MFScanUtility_*****_EN.exe], click "Next"



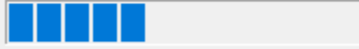
2. 按「Yes」
Click "Yes"



3. 等待安裝程序完成
Waiting for the installation progress

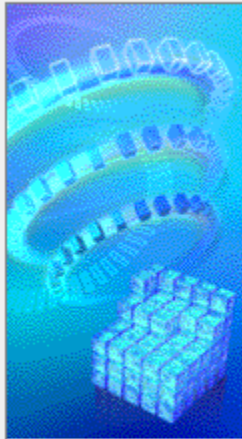
Install

C:\...\MF Scan Utility\jcutd40.dll



4. 按「Complete」完成安裝
Click "Complete" to finish installation

Installation Complete



Installation of Canon MF Scan Utility completed successfully.

Click [Complete] to exit the setup program.

Complete

-完-
-End-