

**LBP646Cdw / LBP647Cdw / LBP673Cdw II 在 Windows 透過 USB 連線連接印表機之驅動程式步驟**  
**Driver installation procedure for LBP646Cdw / LBP647Cdw / LBP673Cdw II in Windows via USB**

**\*\*注意: 安裝驅動程式前請勿接駁 USB 線，以免系統發生錯誤\*\***

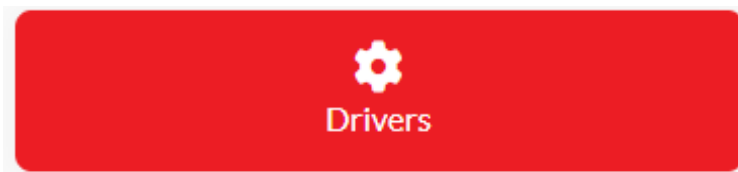
**\*\* Please don't plug the USB cable until the driver asked to do so\*\***

下載及安裝步驟

Driver download and Installation procedure

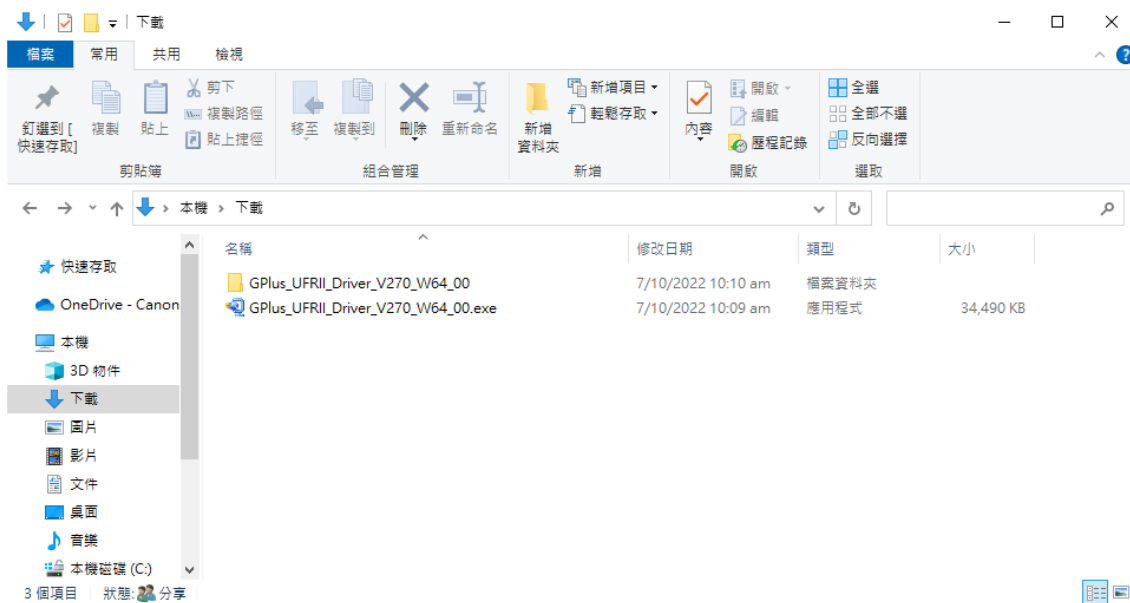
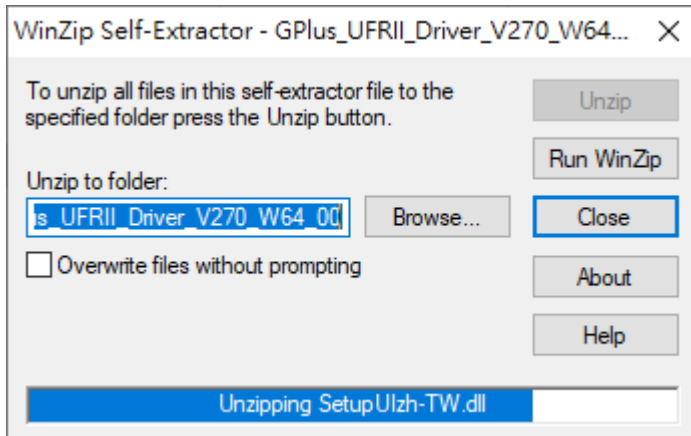
1. 到以下網站下載印表機的驅動程式及掃描軟件  
Go to below URL then download the printer driver and scanner software  
<https://hk.canon/en/support/imageCLASS%20LBP673Cdw%20II/model>
2. 選擇並下載以下檔案  
Choose and download below file:

- 打印機驅動程式 / Printer Driver

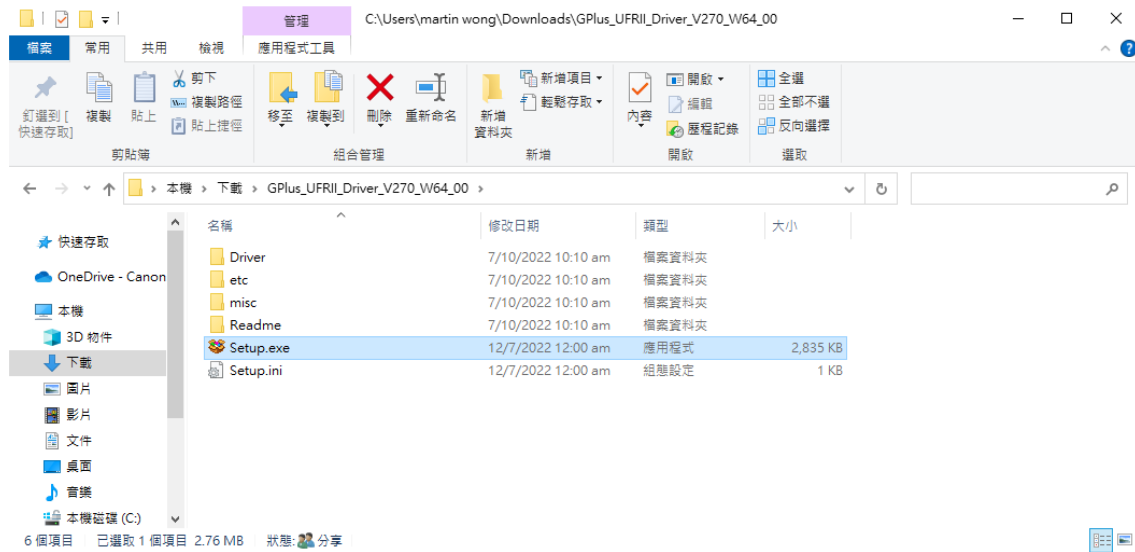


[Windows x64bit] Generic Plus UFR II Printer Driver Vx.xx

3. 打開下載的資料夾，然後執行檔案〔GPlus\_UFR1I\_Driver\_XXXXXX.exe〕並等候解壓縮。  
Open the download folder, then run the file [GPlus\_UFR1I\_Driver\_XXXXXX.exe], and wait for unzip



4. 打開 [ GPLus\_UFR11\_Driver\_XXXXXX ] 資料夾，開啟 [ Setup.exe ] 檔案並安裝  
Go into folder [GPLus\_UFR11\_Driver\_XXXXXX ], open file [Setup.exe] and start installation

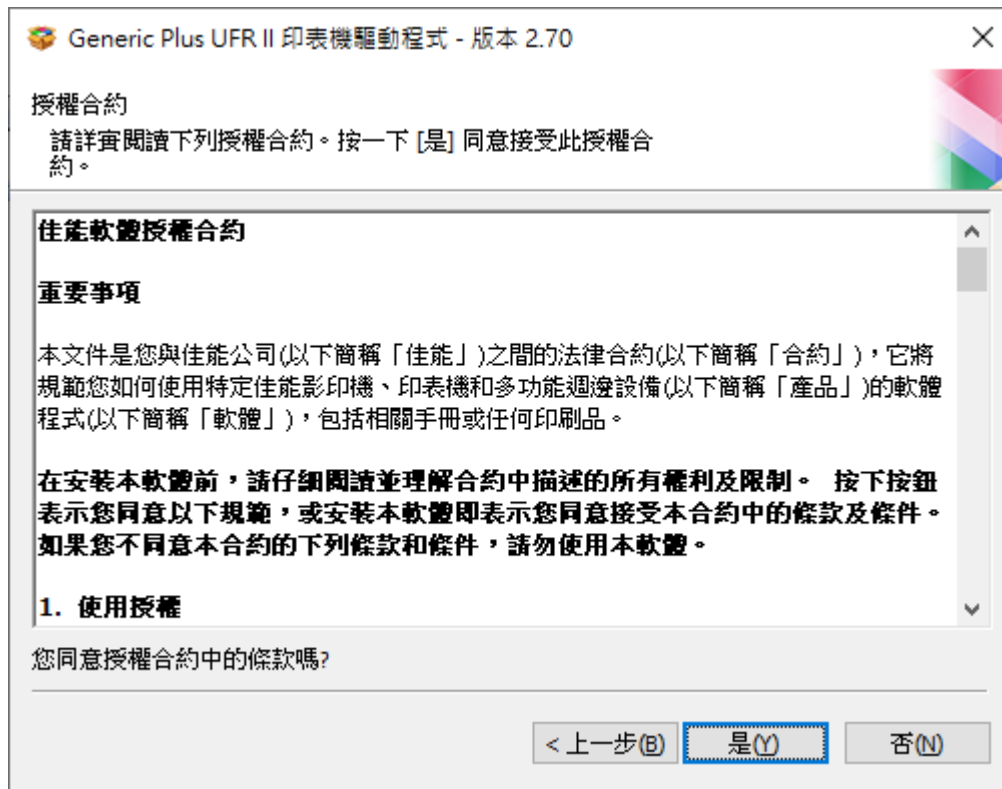


5. 按「下一步」  
Click "Next"



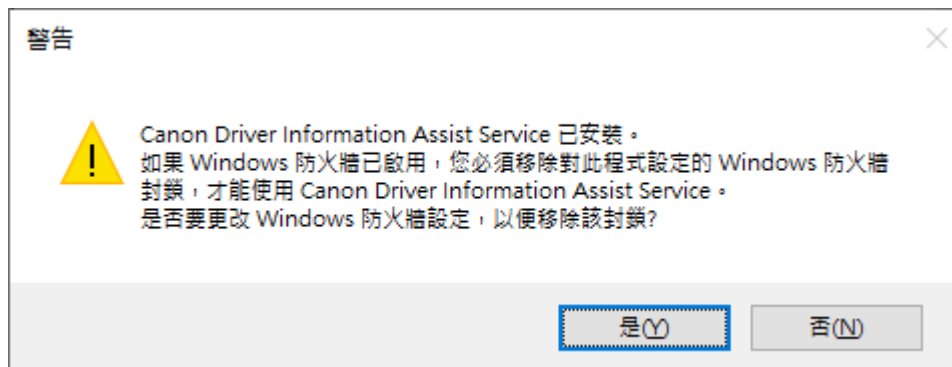
6. 按「Yes」

Click "Yes"

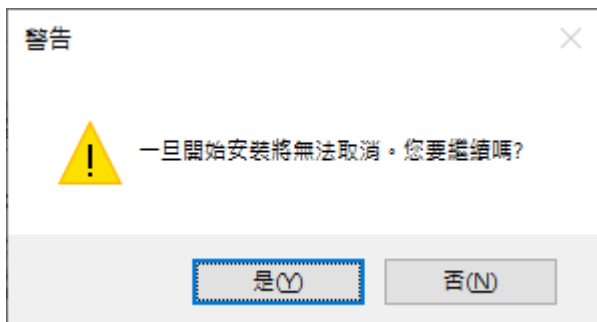
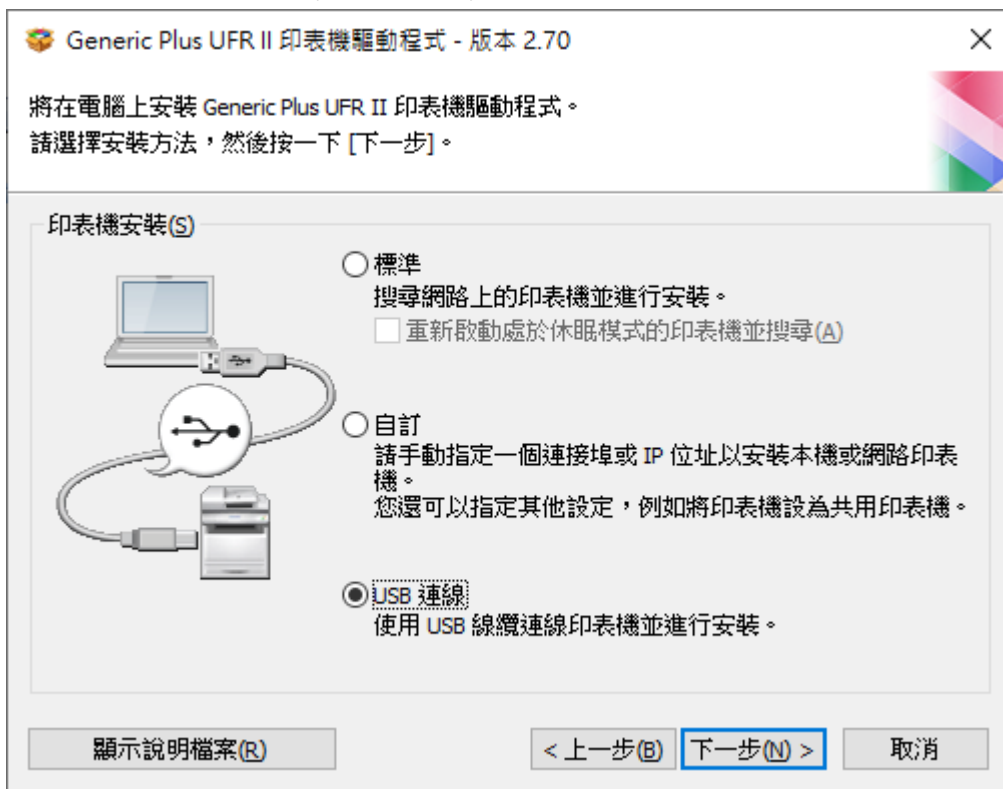


7. 按「Yes」

Click "Yes"

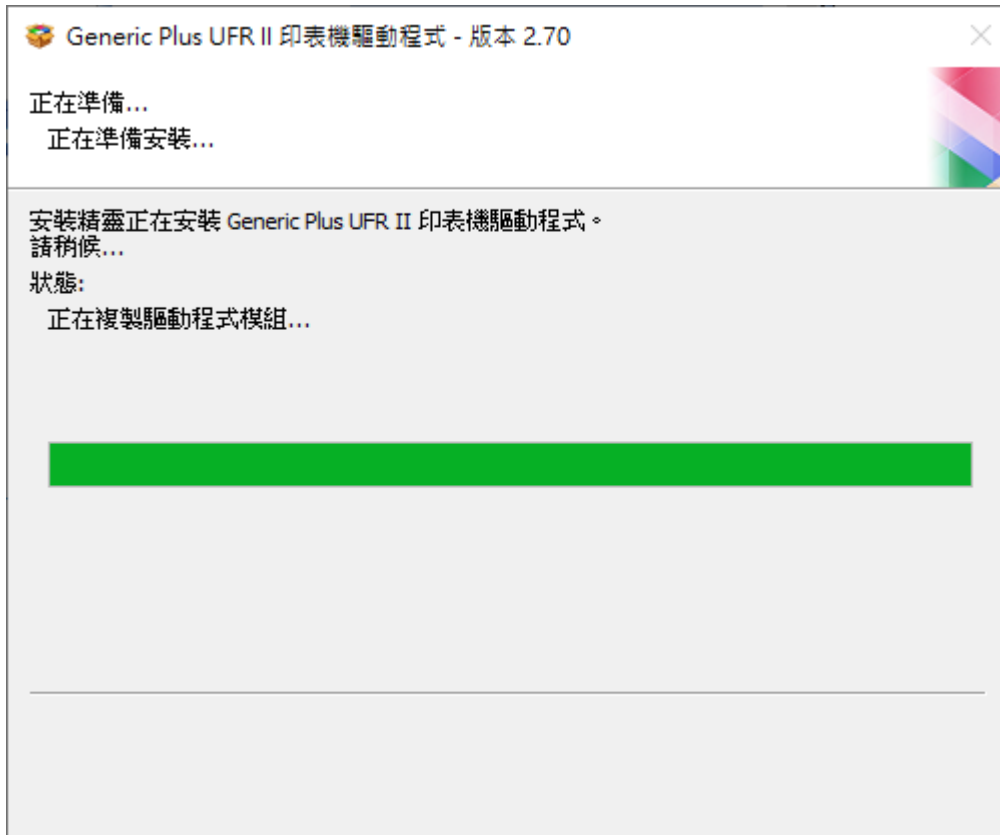


8. 選擇「USB 連線」，按「下一步」，再按「是」  
Choose “USB Connection”, click “Next”, then click “Yes”



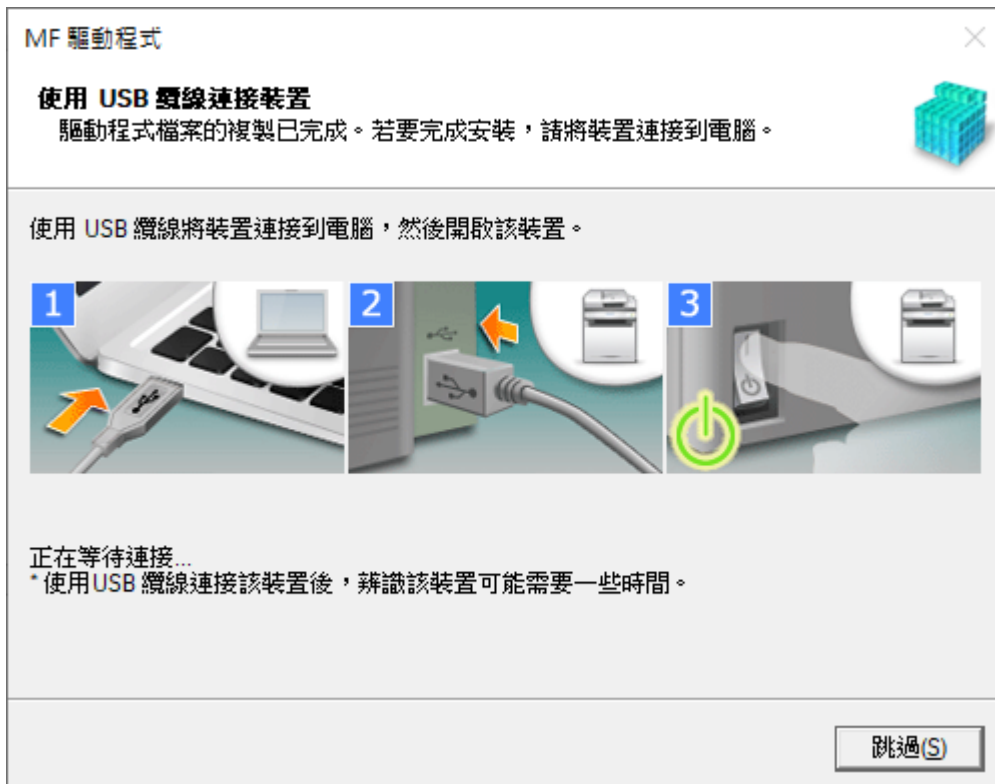
9. 等待安裝程序完成

Waiting for the installation progress



10. 接駁 USB 線及開啟印表機

Connect device with USB cable and switch on the printer



11. 成功偵測印表機後按「結束」完成安裝

Click "Exit" to finish installation after device detected by computer



12. 按「離開」

Click "Exit"



-完-  
-End-