

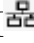



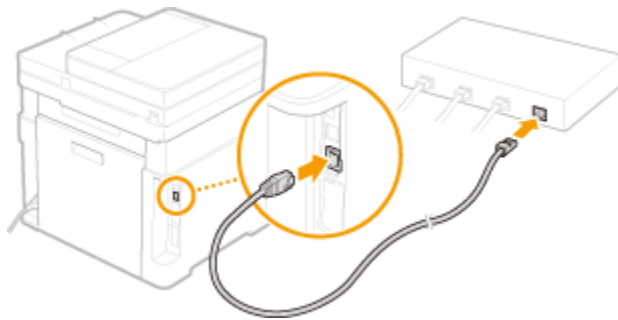
**MF667CX 在 Windows 透過 LAN 連線連接印表機之驅動程式步驟**  
**Driver installation procedure for MF667CX in Windows (Via Wired LAN)**

以下步驟及畫面僅供參考，實際操作畫面可能因裝置型號、系統或軟件版本而有所不同。  
**The following steps and screens are for reference only, and the actual operation screens may vary depending on the device model, system, or software version.**

先將打印機連接到網路，詳細可參考以下步驟

Connect printer to network first, please refer to following procedure

1. 開啟印表機  
Turn on the printer
2. 在主畫面中點選「有線 / 無線」 [  ] / [  ]  
Tap "Wired / Wi-Fi" icon in the Home Screen [  ] / [  ]
3. 點選 <有線區域網路>  
Tap "Wired LAN"
4. 使用區域網路纜線將本機連接到路由器  
推入接頭，直至聽到喀嗒聲  
Connect the machine to router by using a LAN cable, push the connector in until it clicks into place



等待約 2 分鐘，直到本機的 IP 位址設定完成

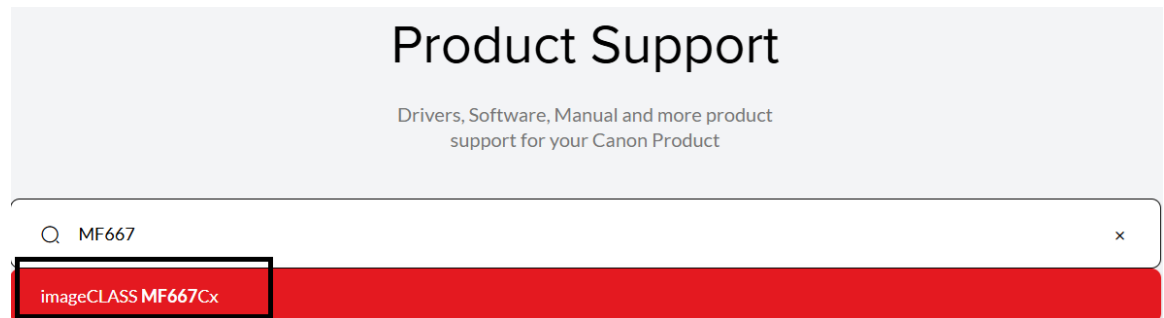
Wait approximately 2 minutes until IP address settings of the machine complete

## 下載及安裝步驟

### Driver download and installation procedure

5. 到佳能網站 <https://hk.canon/en/support>，選擇相關的印表機型號及下載印表機的驅動程式

Go to: <https://hk.canon/en/support>, select related printer model, then download the printer driver



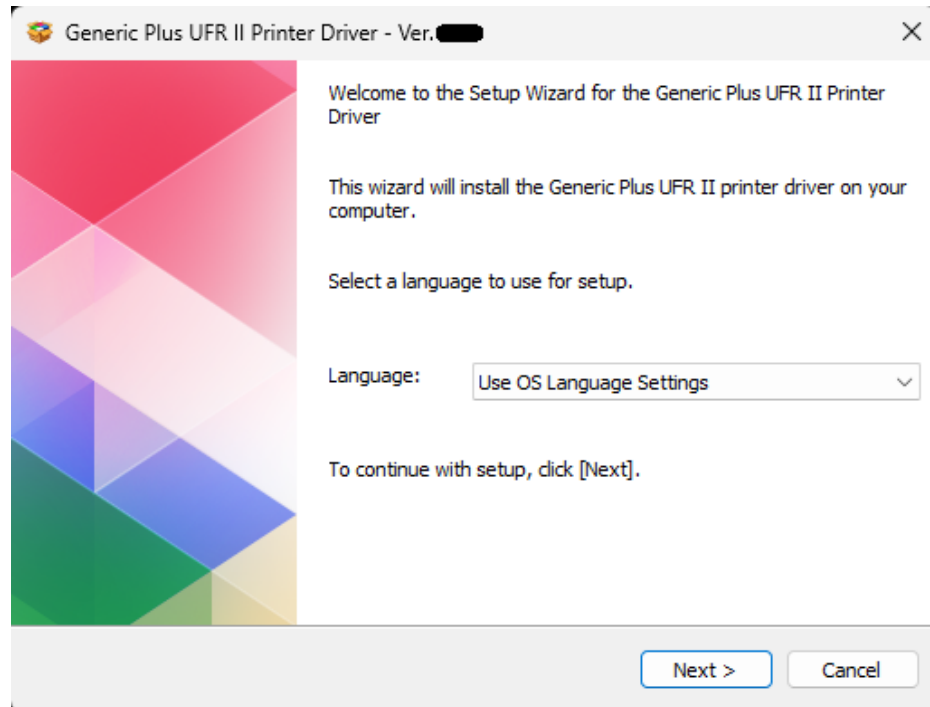
6. 選擇並下載以下檔案

Choose and download below files:

- 打印機驅動程式 / Printer Driver  
[\[Windows 64bit\] Generic Plus UFR II Printer Driver VX.XX](#)
- 掃描驅動程式 / Scanner Driver  
[\[Windows 64bit\] MF660 Series ScanGear MF Ver.XX.X.X.X.mfXX](#)
- 掃描軟件 / Scanning Software  
[\[Windows 32bit & 64bit\] MF Scan Utility Ver.\\*.\\*](#)

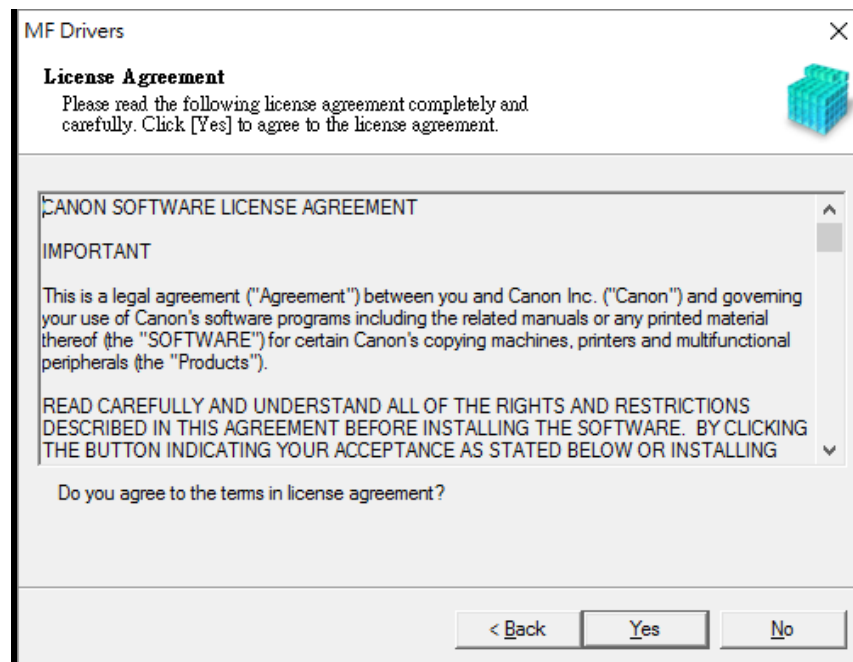
7. 執行檔案[Windows 64bit] Generic Plus UFR II Printer Driver VX.XX 內的 Setup.exe 按「Next」

Run File Setup.exe in [Windows 64bit] Generic Plus UFR II Printer Driver VX.XX, click "Next"

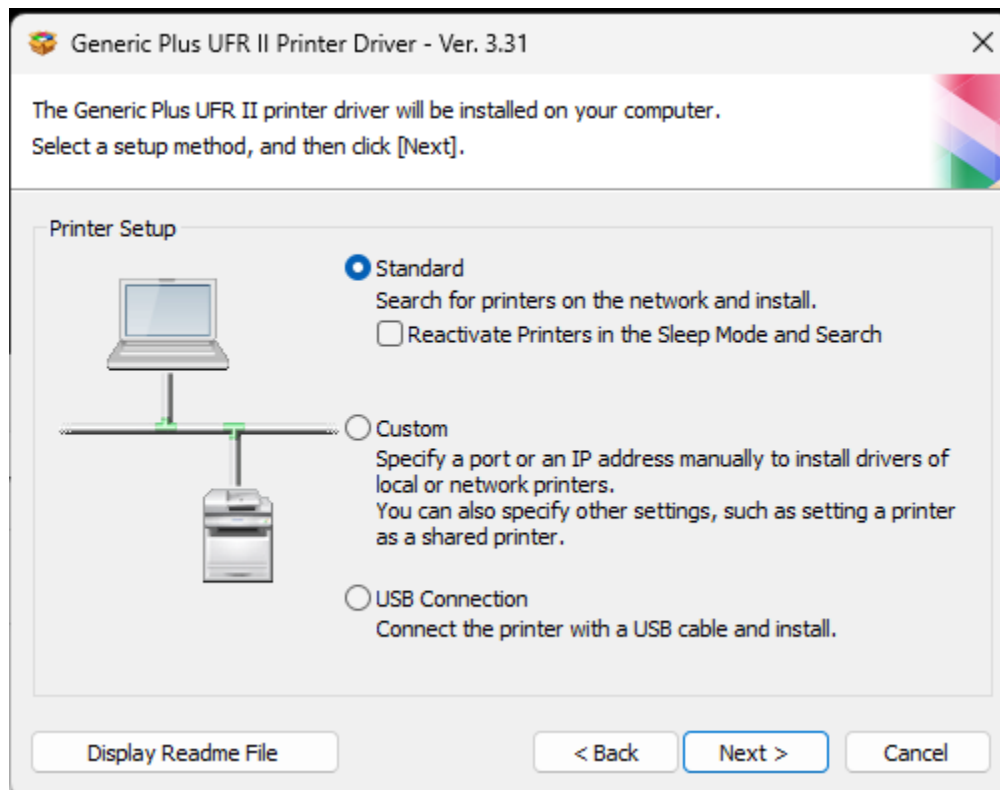


8. 按「Yes」

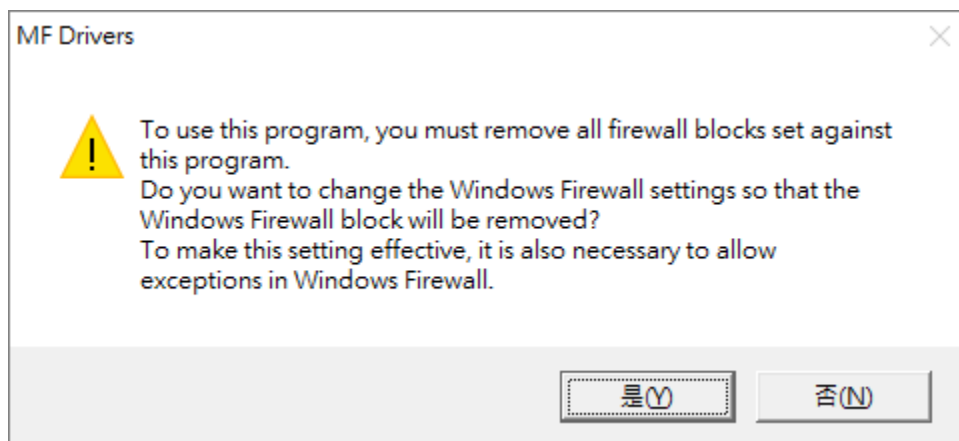
Click "Yes"



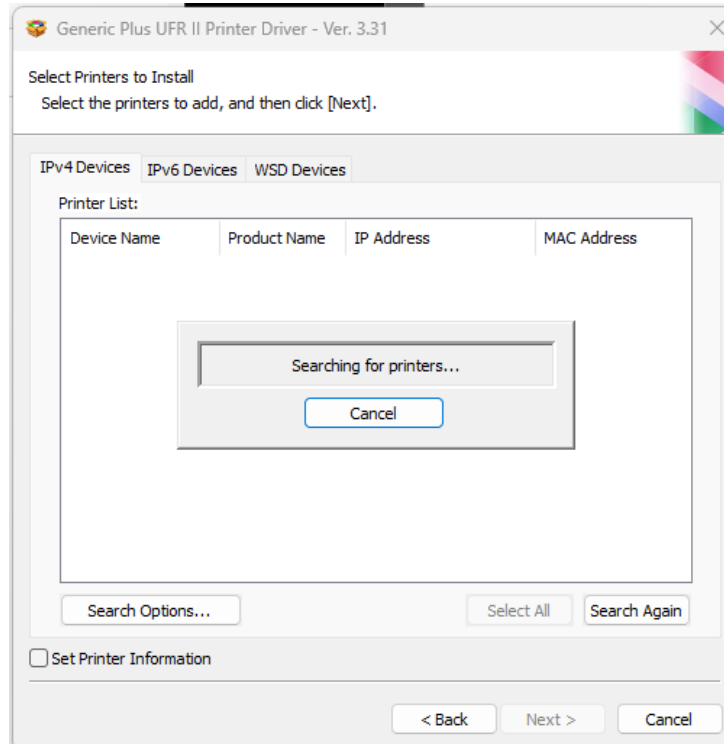
9. 選擇「Standard」，按「Next」  
Choose "Standard", click "Next"



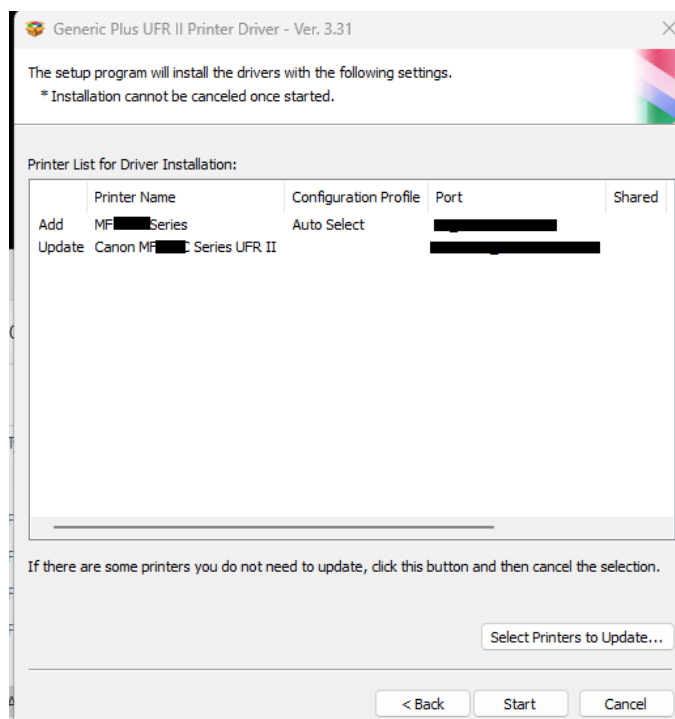
10. 按「是」  
Click "Yes"



11. 程式會自動偵測網絡上的印表機，選擇後按「Next」  
Program will automatic detect the network printer, choose printer and click “Next”

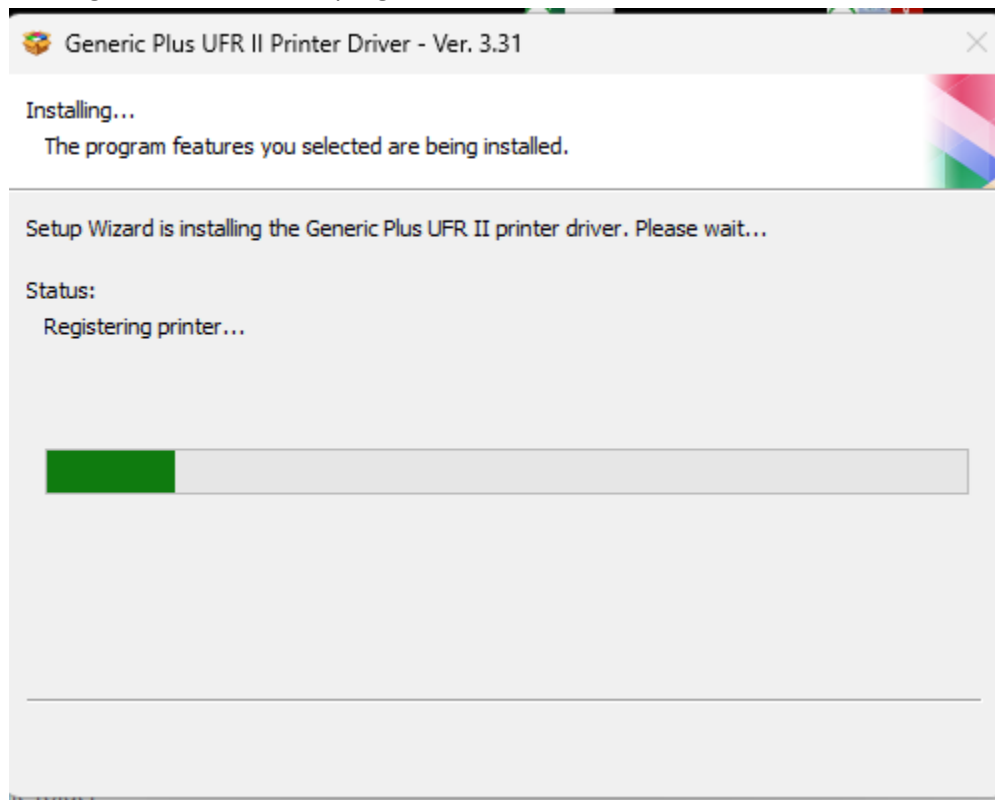


12. 按「Start」  
Click “Start”



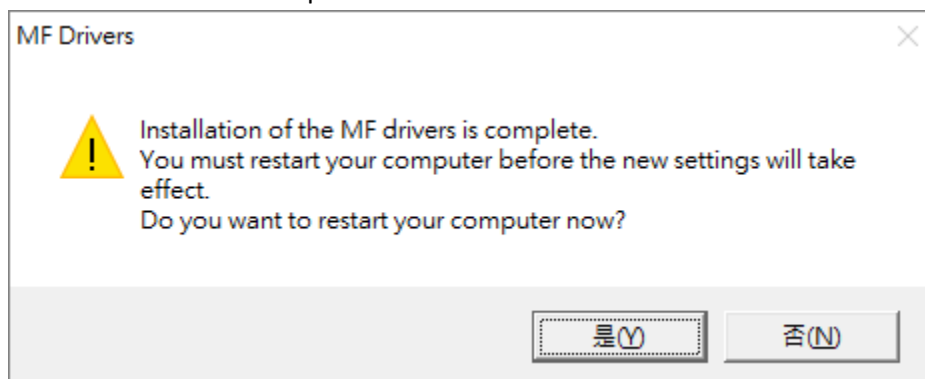
13. 等待安裝程序完成

Waiting for the installation progress



14. 按「是」重啟電腦

Click "Yes" to restart computer

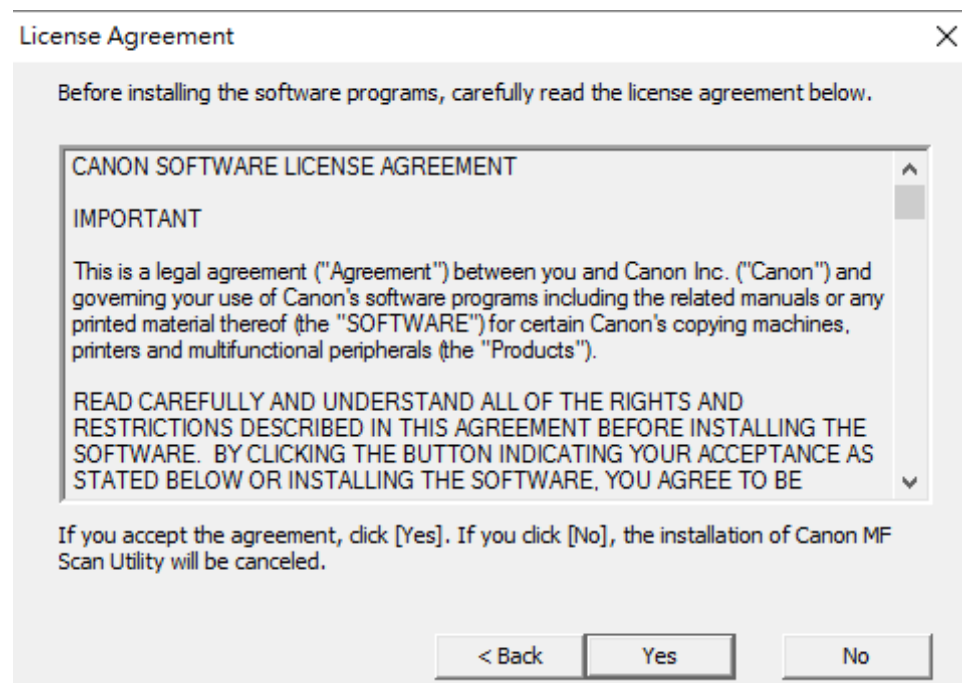


## 安裝掃描驅動程式 Install Scanner Driver

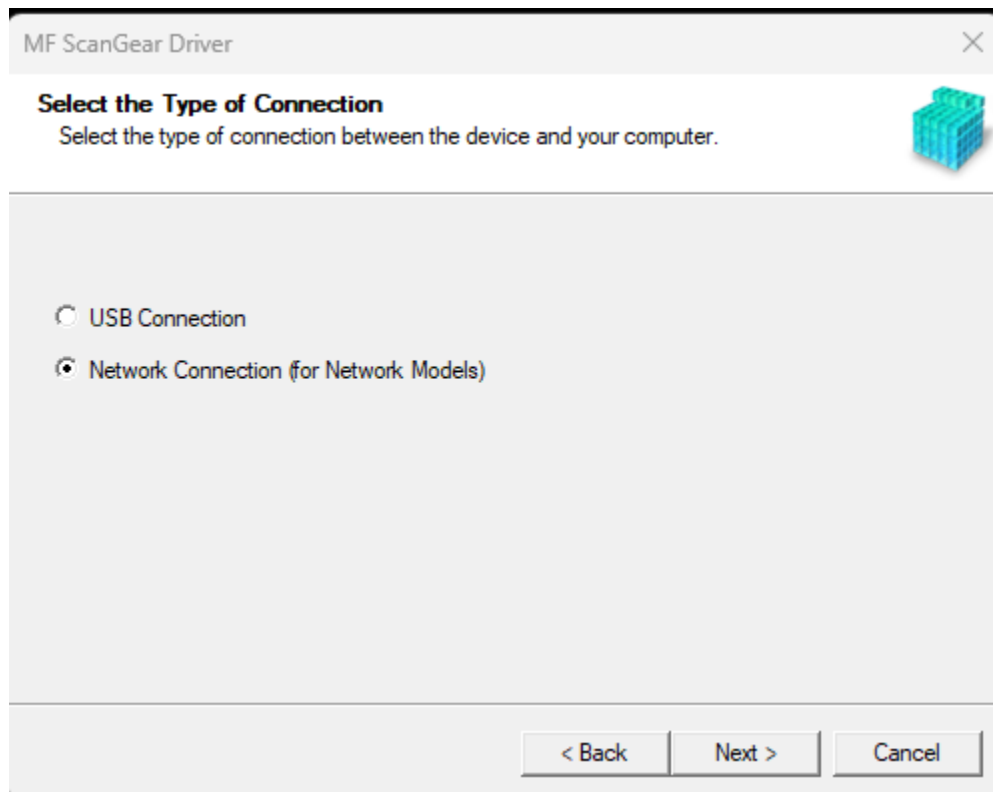
1. 執行檔案 [scangearmfvXXXXXmfXXxXXXX] 按「Next」  
Run the file [scangearmfvXXXXXmfXXxXXXX] , click “Next”



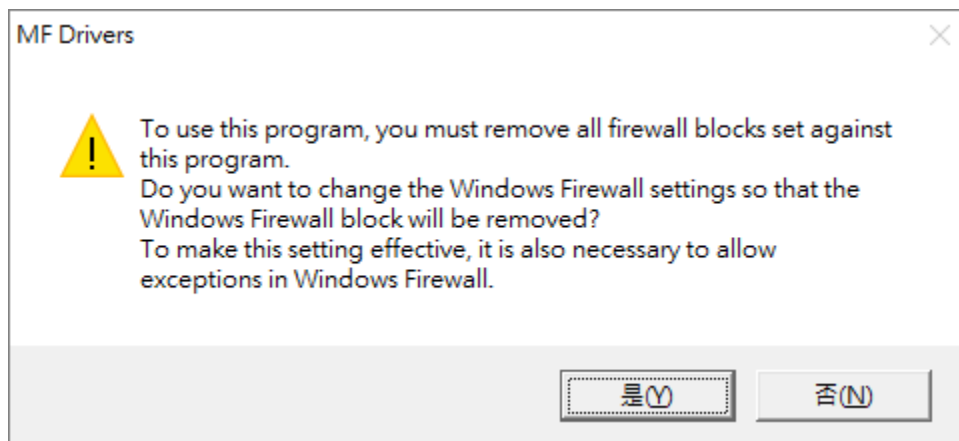
2. 按「Yes」  
Click “Yes”



3. 選擇「Network Connection」，按「Next」  
Choose “Network Connection”, click “Next”



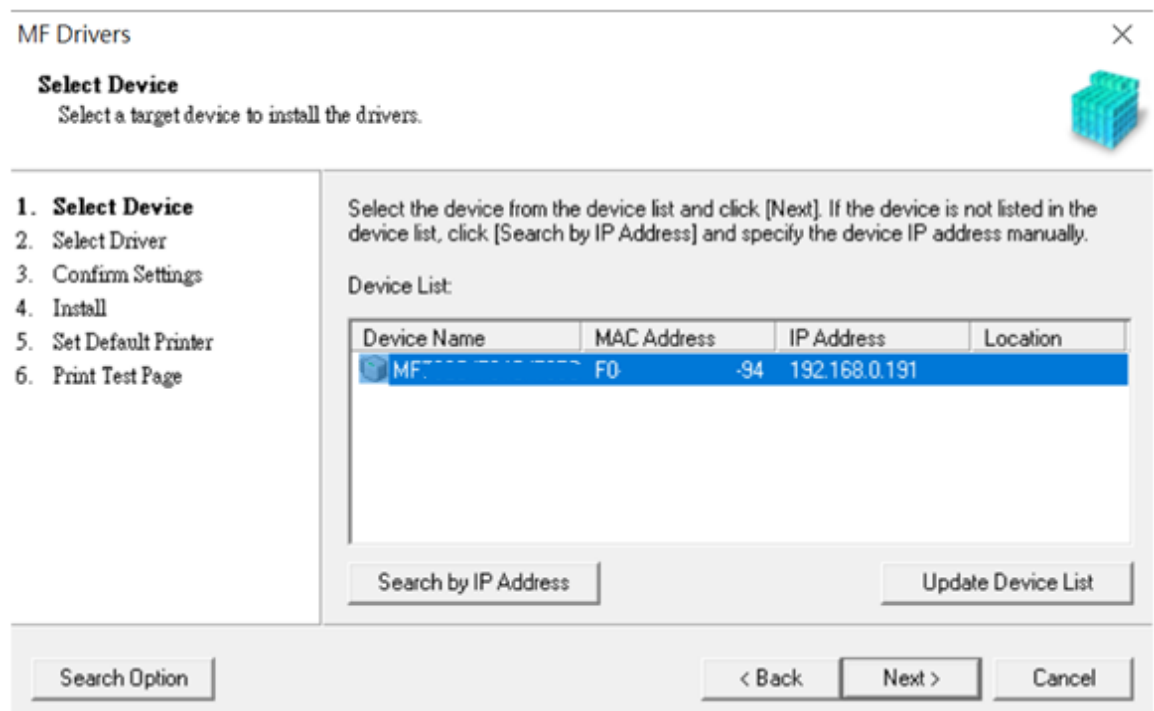
4. 按「是」  
Click “Yes”





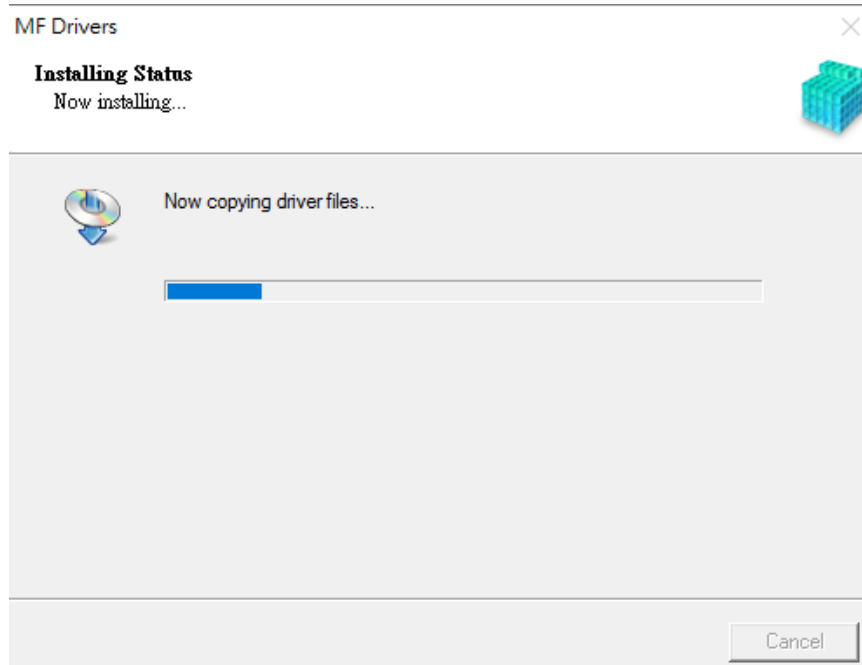
5. 程式會自動偵測網絡上的印表機，選擇後按「Next」

Program will automatic detect the network printer, choose printer and click “Next”



6. 等待安裝程序完成

Waiting for the installation progress

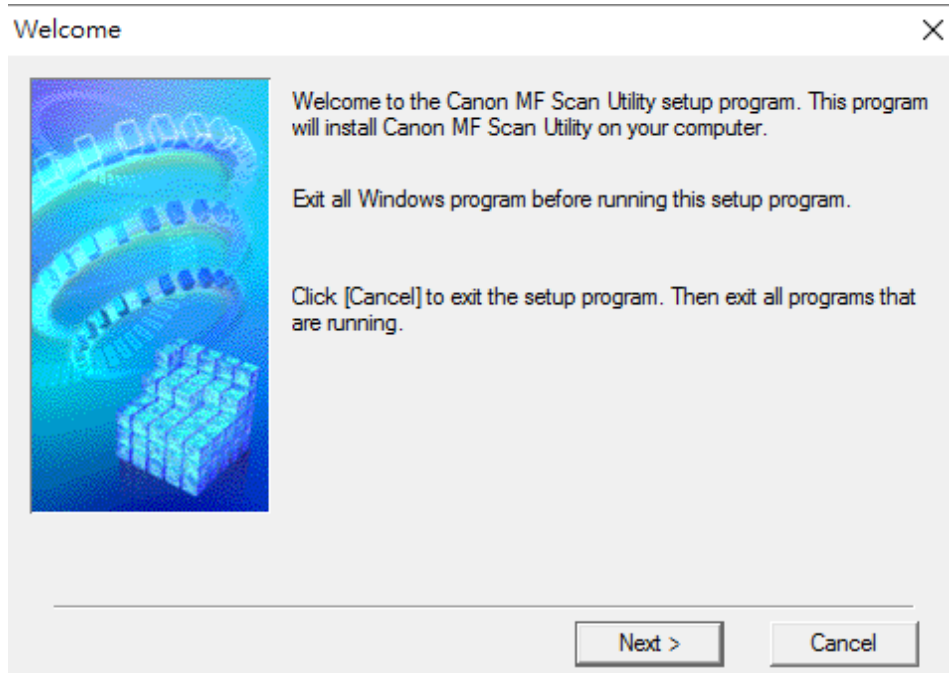


## 安裝掃描軟件MF Scan Utility

### MF Scan Utility installation procedure

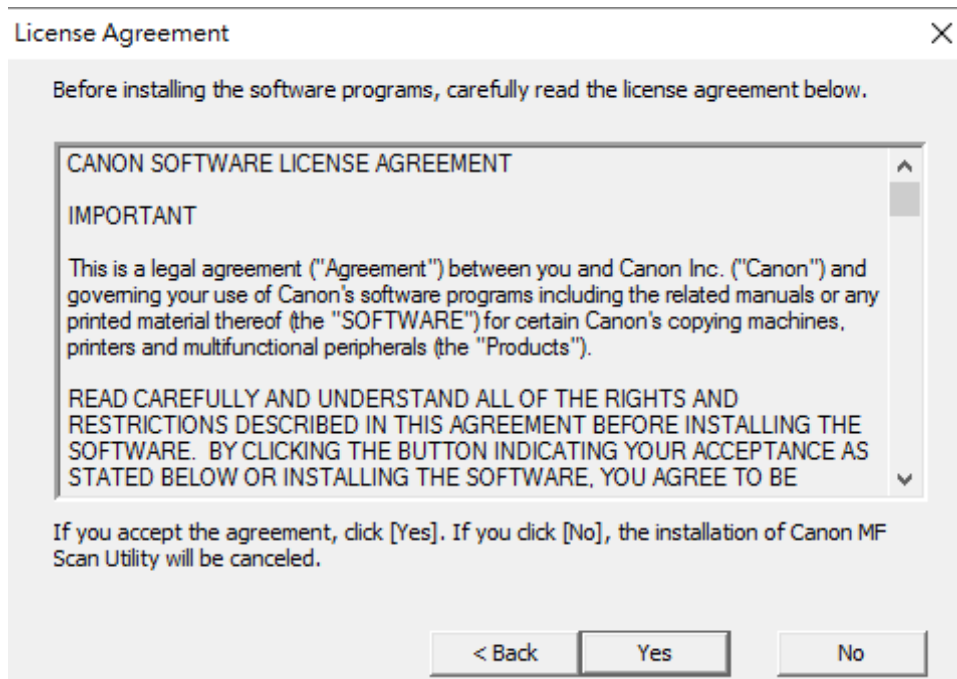
1. 執行檔案〔MFScanUtility\_\*\*\*\*\*\_EN.exe〕按「Next」

Run the file [MFScanUtility\_\*\*\*\*\*\_EN.exe], click "Next"



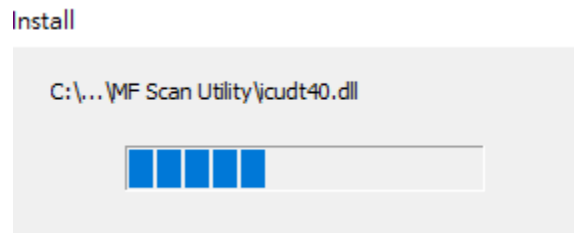
2. 按「Yes」

Click "Yes"



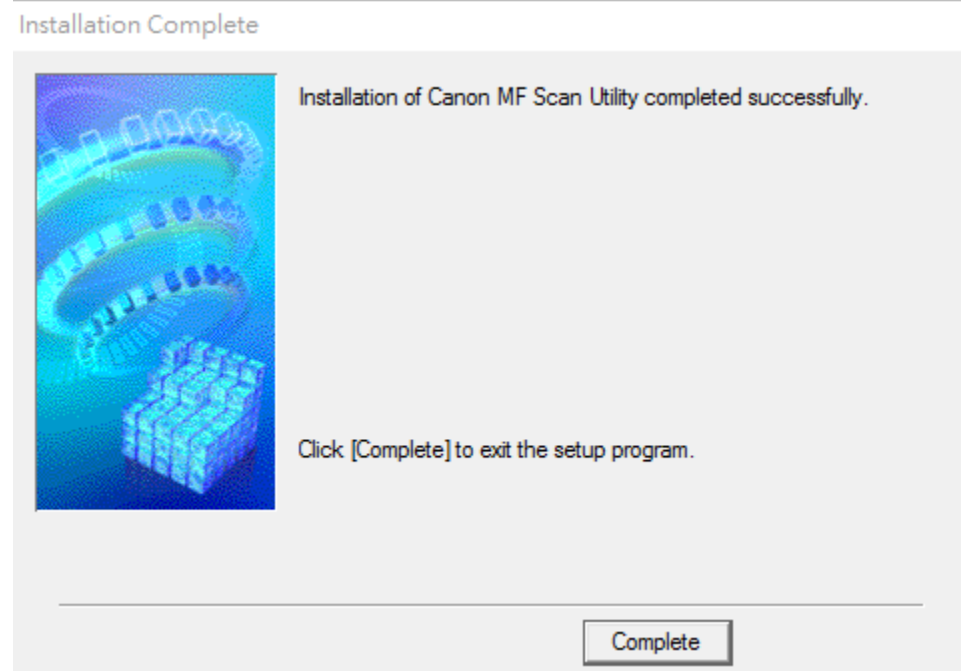
3. 等待安裝程序完成

Waiting for the installation progress



4. 按「Complete」完成安裝

Click "Complete" to finish installation



-完-  
-End-