

**LBP811Cx 在 Windows 透過無線 LAN 連線連接印表機之驅動程式步驟**  
**Driver installation procedure for LBP811Cx in Windows (Via Wireless LAN)**

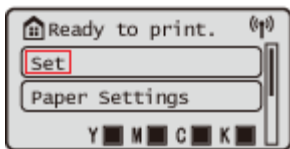
以下步驟及畫面僅供參考，實際操作畫面可能因裝置型號、系統或軟件版本而有所不同。  
**The following steps and screens are for reference only, and the actual operation screens may vary depending on the device model, system, or software version.**

先將打印機連接到網路，詳細可參考以下步驟

Connect printer to network first, please refer to following procedure

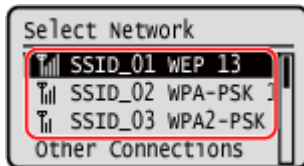
1. 開啟印表機  
Turn on the printer

2. 選擇 [首頁] 畫面中的 [設定] ▶ **OK**  
Select <Set> on the <Home> screen ▶ **OK**



3. 選擇 [參數選擇] ▶ [網路] ▶ [無線區域網路設定] ▶ [SSID 設定] ▶ **OK**  
Select <Preferences> ▶ <Network> ▶ <Wireless LAN Settings> ▶ <SSID Settings> ▶ **OK**

4. 選擇 [選擇存取點] ▶ 選擇想要連線的無線區域網路的 SSID，然後按下 **OK**  
Select <Select Access Point> ▶ select the SSID of the wireless LAN to which you want to connect, and press **OK**



5. 輸入網路金鑰，然後選擇 [套用] ▶ **OK**  
Enter the network key, and choose <Apply> ▶ **OK**

6. 選擇 [是] ▶ **OK**  
Select <Yes> ▶ **OK**

7. 操作面板上顯示 [已連線。] 時，按下 **OK**  
When [Connected.] is displayed on the operation panel, press **OK**

等待約 2 分鐘，直到本機的 IP 位址設定完成

Wait approximately 2 minutes until IP address settings of the machine complete

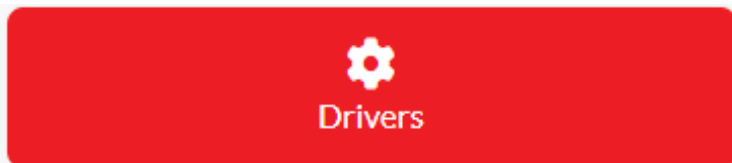
## 下載及安裝步驟

### Driver download and Installation procedure

8. 到以下網站下載印表機的驅動程式  
Go to below URL then download the printer driver  
<https://hk.canon/en/support/imageCLASS%20LBP811Cx/model>

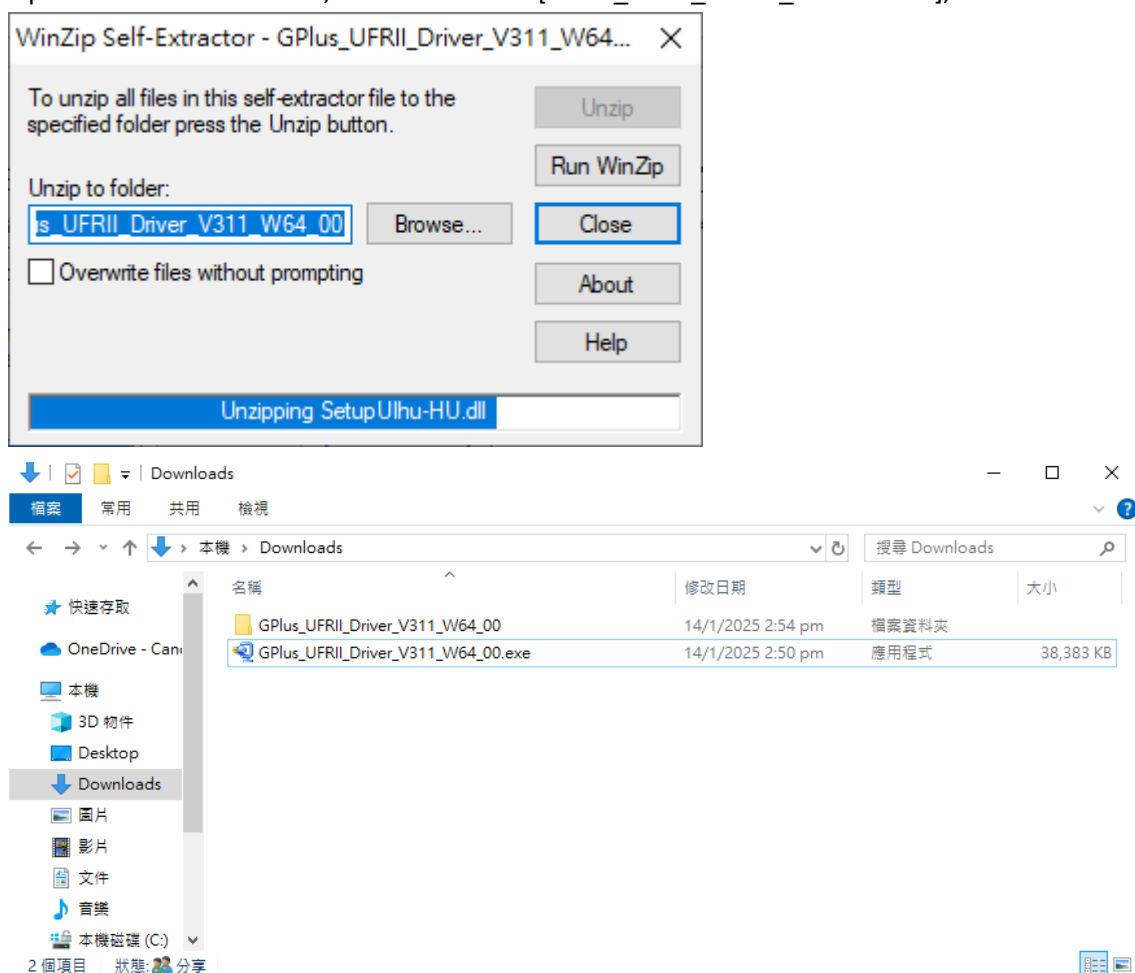
9. 選擇並下載以下檔案  
Choose and download the file below:

- 打印機驅動程式 / Printer Driver

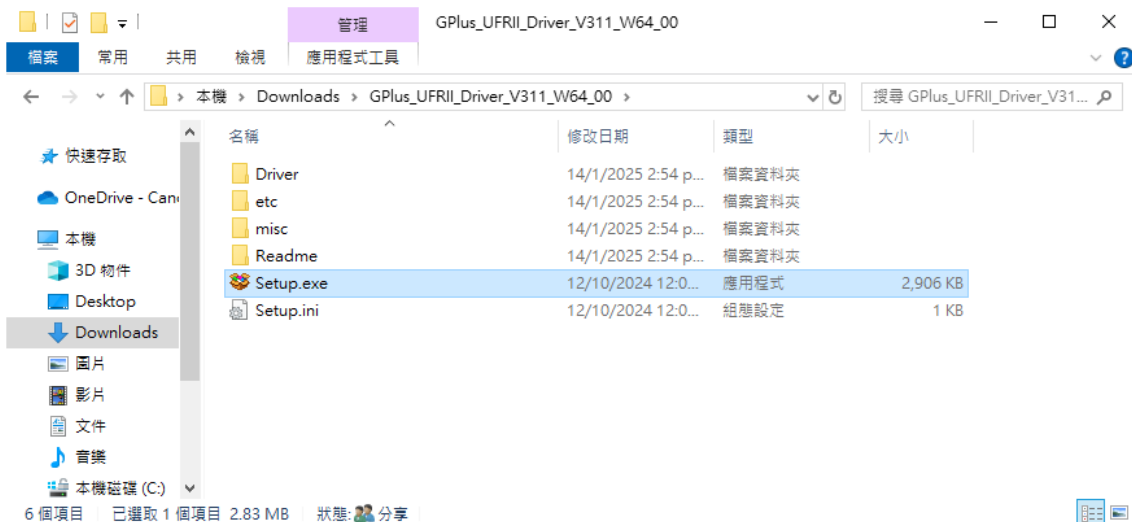


[Windows x64] Generic Plus UFR II Printer Driver Vx.xx

10. 打開下載的資料夾，然後執行檔案〔GPlus\_UFR II\_Driver\_XXXXXX.exe〕並等候解壓縮。  
Open the download folder, then run the file [GPlus\_UFR II\_Driver\_XXXXXX.exe], and wait for unzip



11. 打開 [GPlus\_UFR11\_Driver\_XXXXXX] 資料夾，開啟 [Setup.exe] 檔案並安裝  
Go into folder [GPlus\_UFR11\_Driver\_XXXXXX], open file [Setup.exe] and start installation

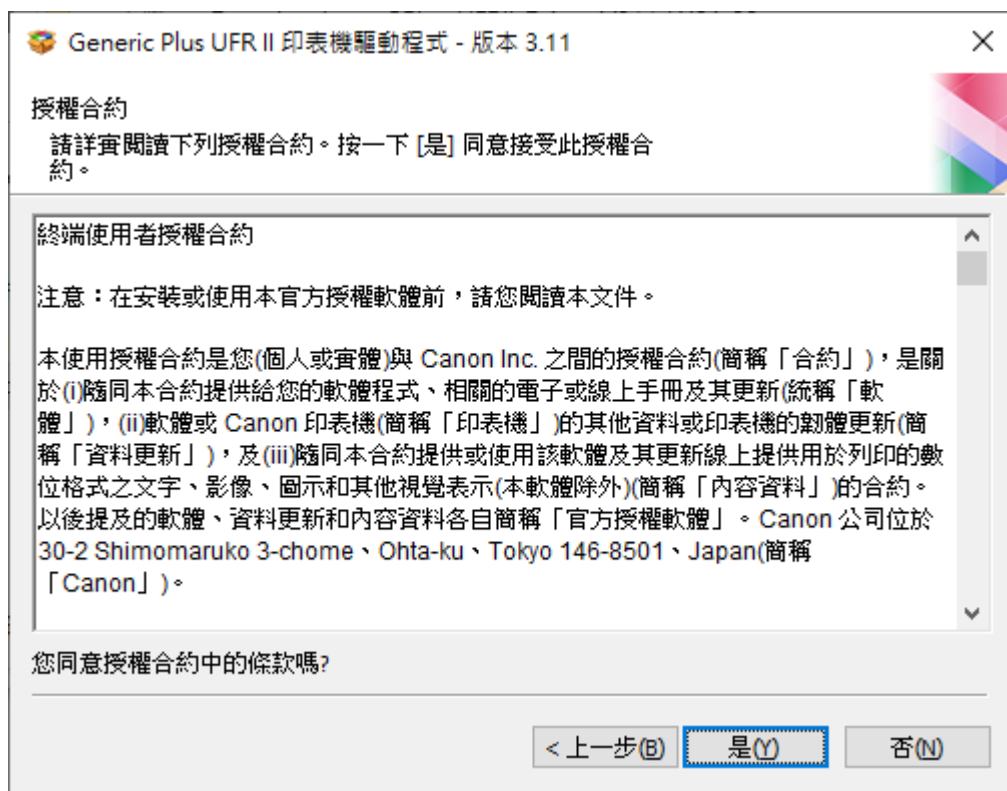


12. 按「下一步」  
Click "Next"



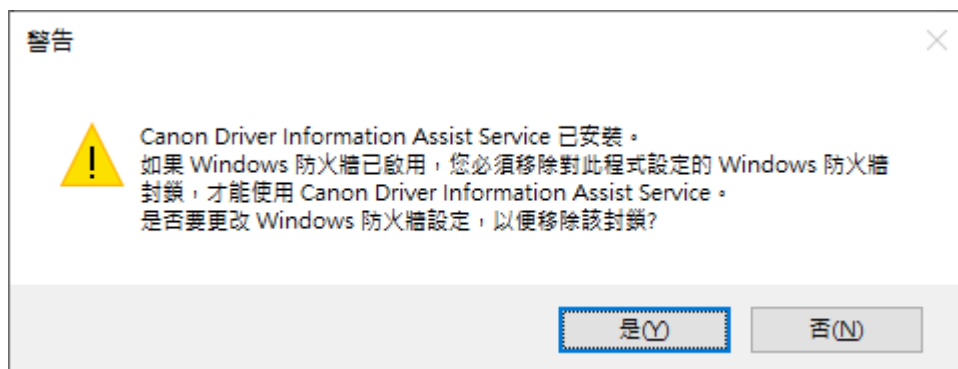
13. 按「Yes」

Click “Yes”

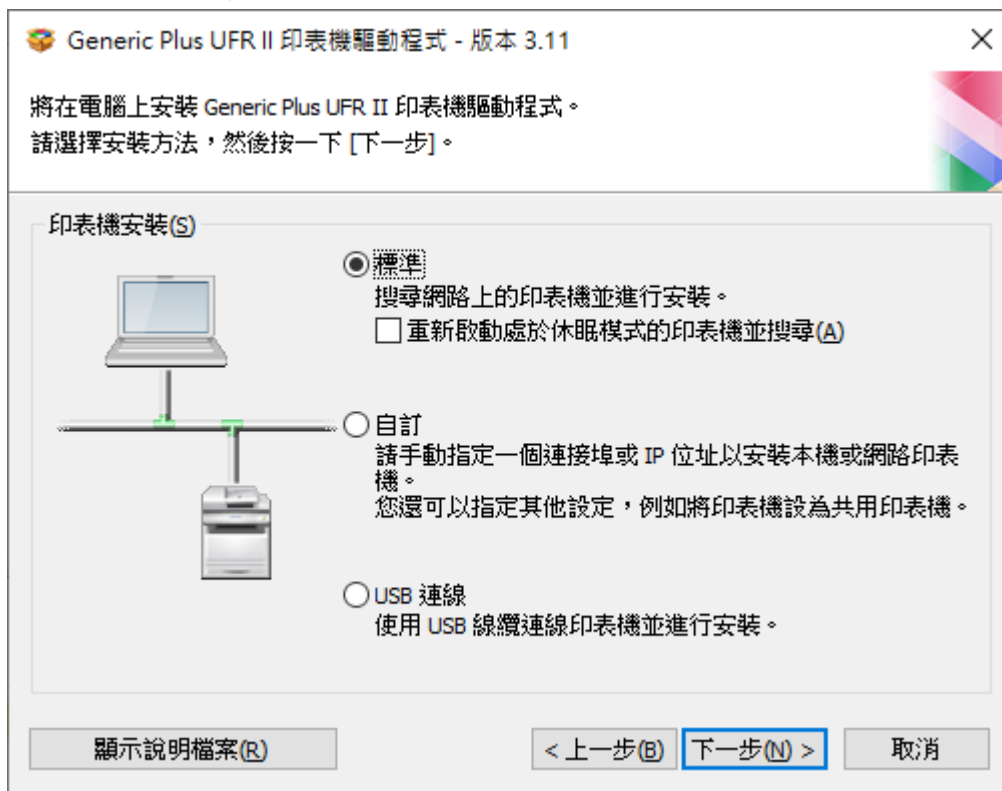


14. 按「Yes」

Click “Yes”



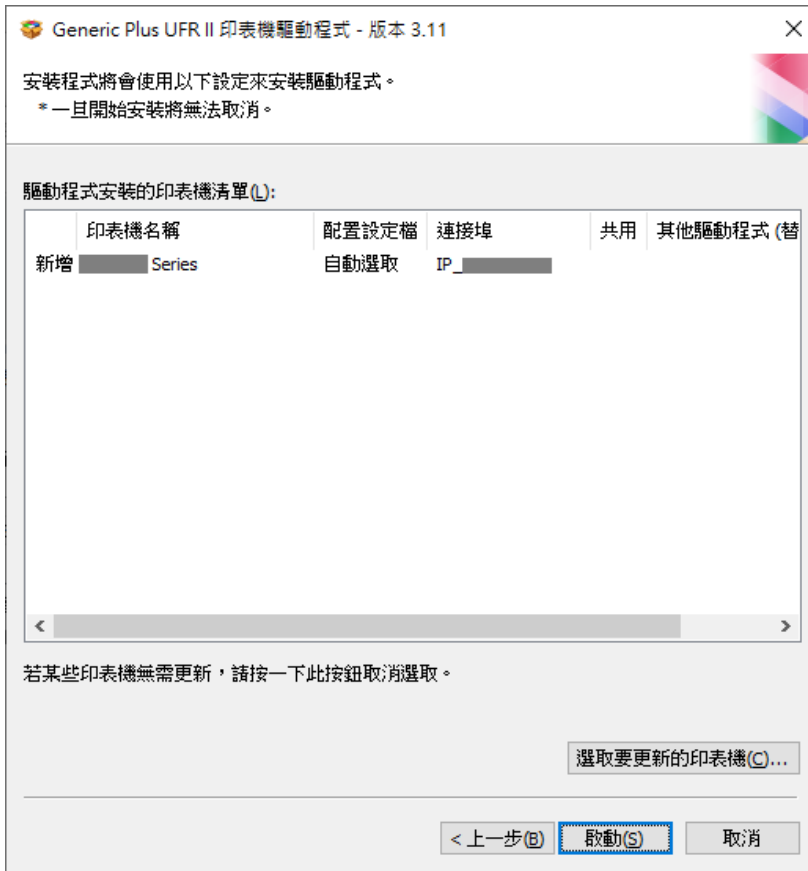
15. 選擇「標準」，按「下一步」  
Choose "Standard", click "Next"



16. 程式會自動偵測網路上的印表機，選擇後按「下一步」  
Program will automatic detect the network printer, choose printer and click "Next"



17. 按「啟動」  
Click “Start”



18. 等待安裝程序完成  
Waiting for the installation progress



19. 按「離開」完成安裝

Click "Exit" to finish install



-完-  
-End-