

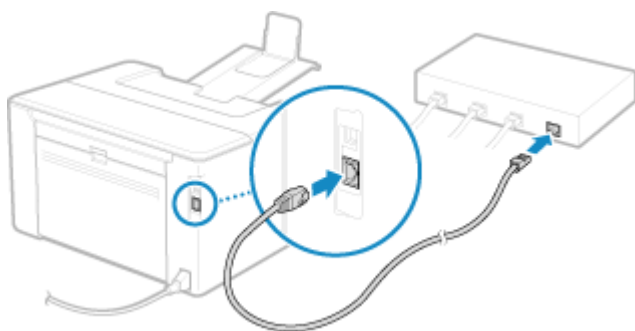
LBP121dn 在 Windows 透過 LAN 連線連接印表機之驅動程式步驟
Driver installation procedure for LBP121dn in Windows (Via Wired LAN)

以下步驟及畫面僅供參考，實際操作畫面可能因裝置型號、系統或軟件版本而有所不同。
The following steps and screens are for reference only, and the actual operation screens may vary depending on the device model, system, or software version.

先將打印機連接到網路，詳細可參考以下步驟

Connect printer to network first, please refer to following procedure

1. 開啟印表機
Turn on the printer
2. 將乙太網路纜線連接到本機和路由器
Connect an Ethernet cable to the machine and router



等待約 2 分鐘，直到本機的 IP 位址設定完成

Wait approximately 2 minutes until IP address settings of the machine complete

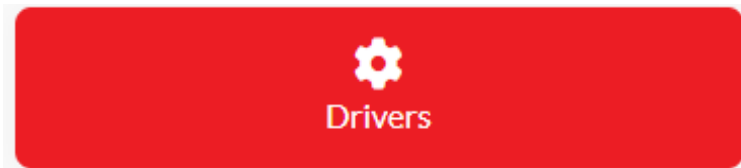
下載及安裝步驟

Driver download and Installation procedure

- 到以下網站下載印表機的驅動程式
Go to below URL then download the printer driver
<https://hk.canon/en/support/imageCLASS%20LBP121dn/model>

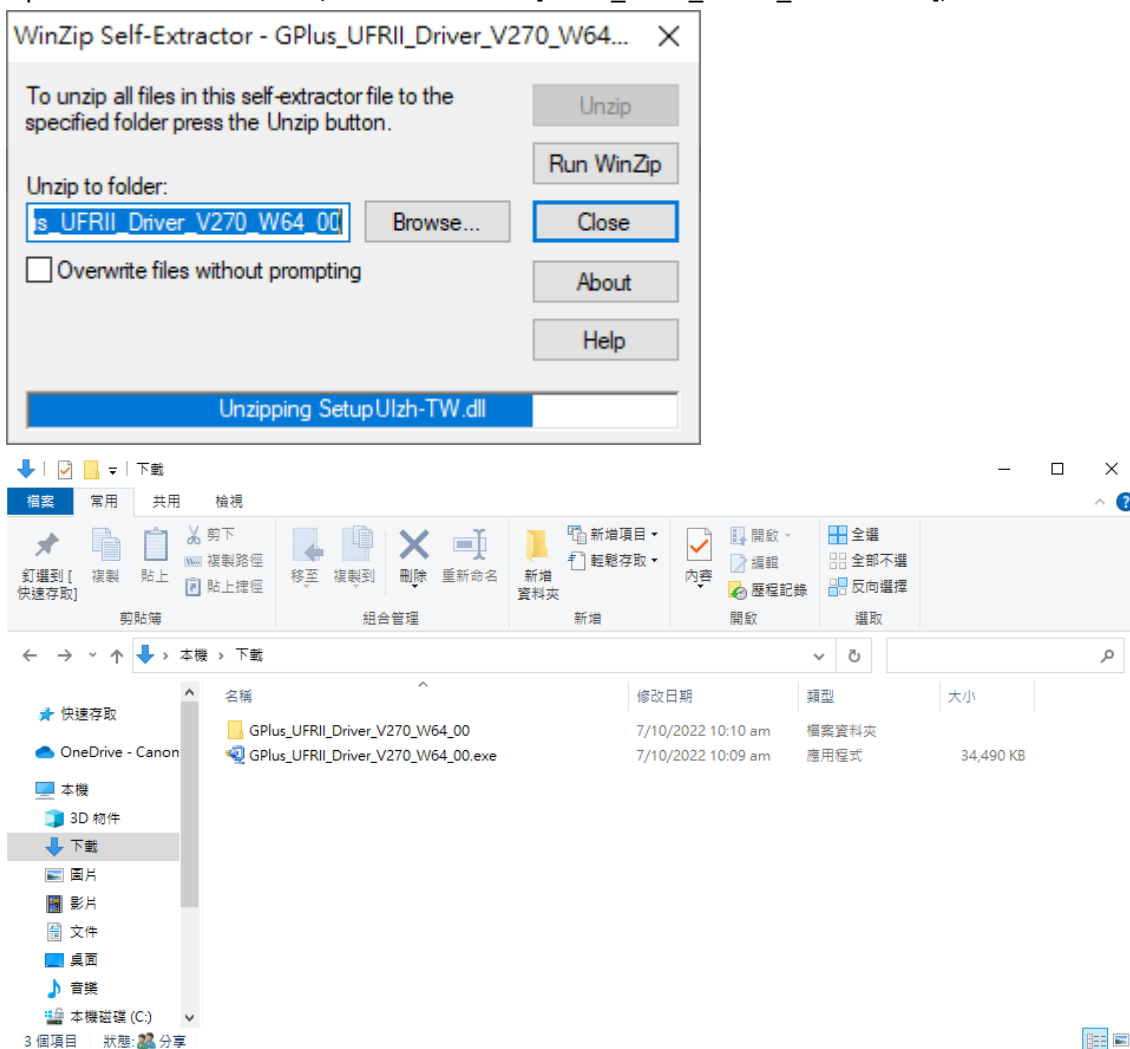
- 選擇並下載以下檔案
Choose and download below file:

- 打印機驅動程式 / Printer Driver

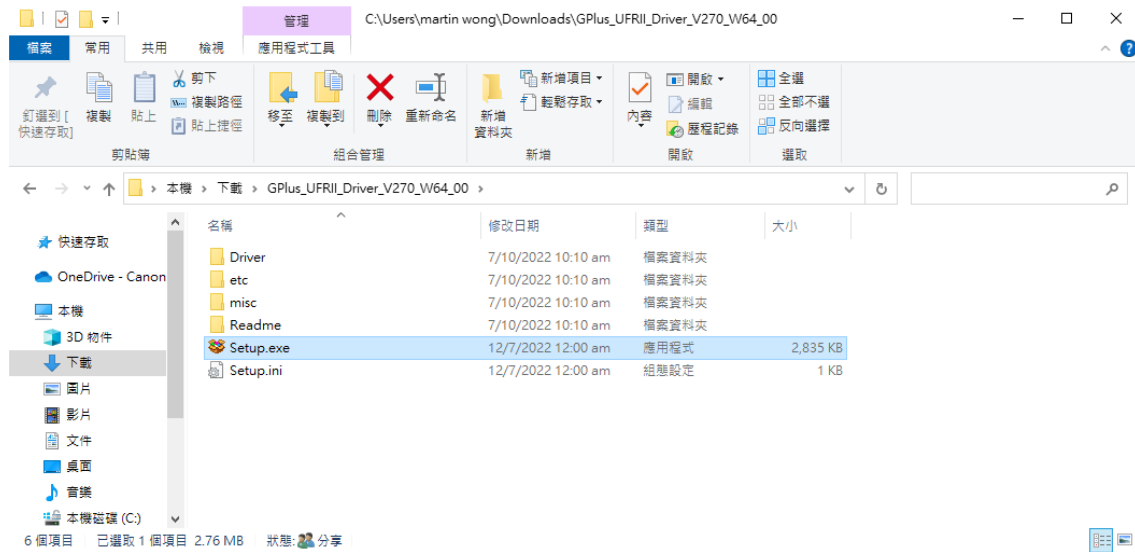


[Windows x64bit] Generic Plus UFR II Printer Driver Vx.xx

- 打開下載的資料夾，然後執行檔案〔GPlus_UFRII_Driver_XXXXXX.exe〕並等候解壓縮
Open the download folder, then run the file [GPlus_UFRII_Driver_XXXXXX.exe], and wait for unzip



6. 打開 [GPLus_UFR1I_Driver_XXXXXX] 資料夾，開啟 [Setup.exe] 檔案並安裝
Go into folder [GPLus_UFR1I_Driver_XXXXXX], open file [Setup.exe] and start installation

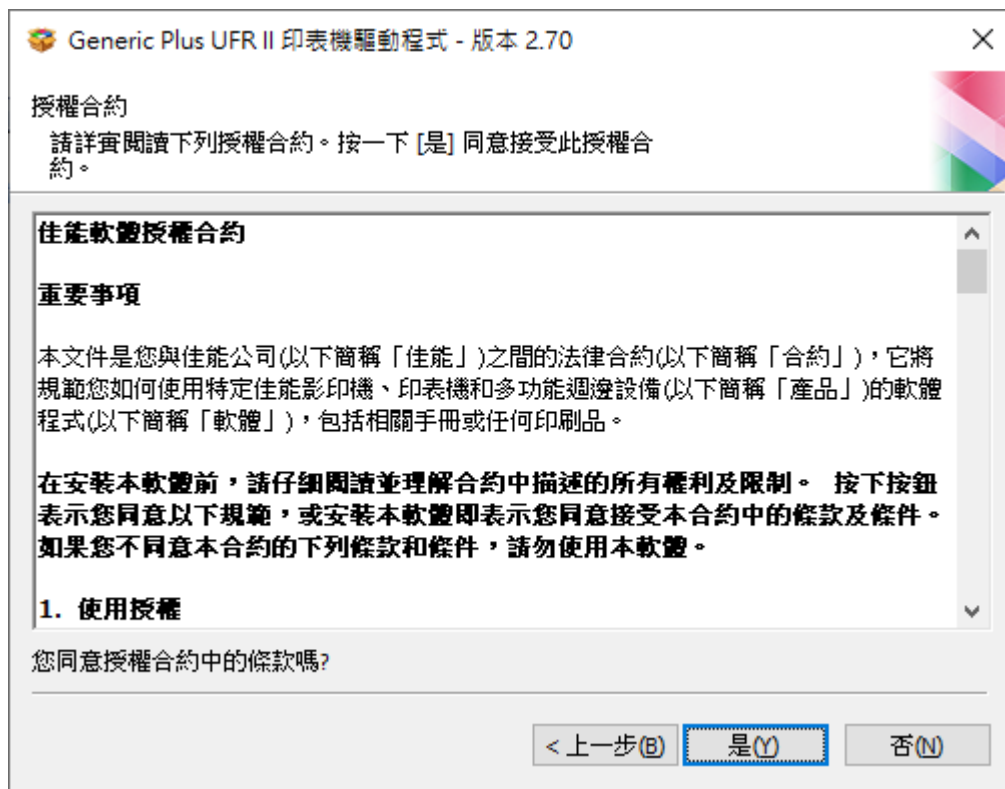


7. 按「下一步」
Click "Next"



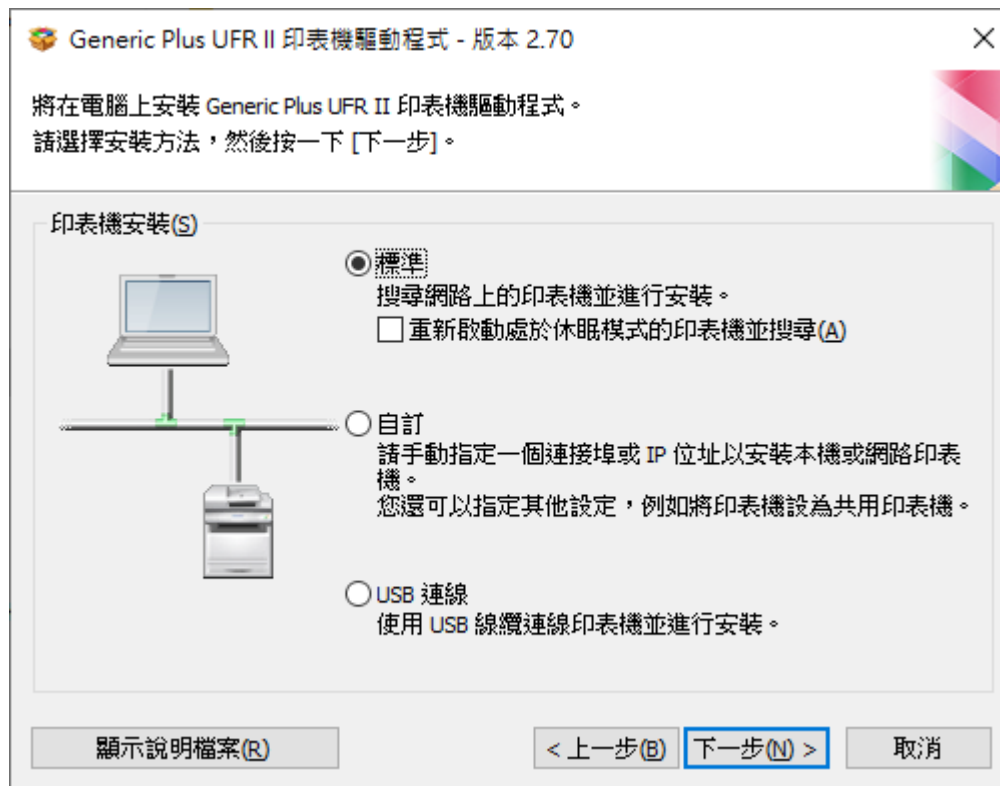
8. 按「Yes」

Click "Yes"



9. 選擇「標準」，按「下一步」

Choose "Standard", click "Next"



10. 按「下一步」
Click “Next”



11. 程式會自動偵測網絡上的印表機，選擇後按「下一步」
Program will automatic detect the network printer, choose printer and click “Next”



12. 按「啟動」
Click “Start”



13. 等待安裝程序完成
Waiting for the installation progress



14. 按「離開」完成安裝
Click "Exit" to finish install



-完-
-End-