

LBP122dw 在 macOS 透過有線 LAN 連線連接印表機之驅動程式步驟 Driver installation procedure for LBP122dw in macOS (Via LAN)

以下步驟及畫面僅供參考，實際操作畫面可能因裝置型號、系統或軟件版本而有所不同。

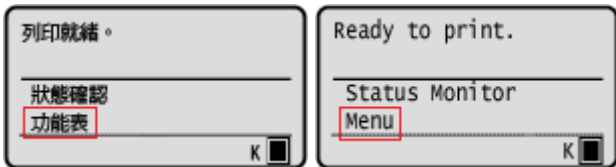
The following steps and screens are for reference only, and the actual operation screens may vary depending on the device model, system, or software version.

先將打印機連接到網路，詳細可參考以下步驟

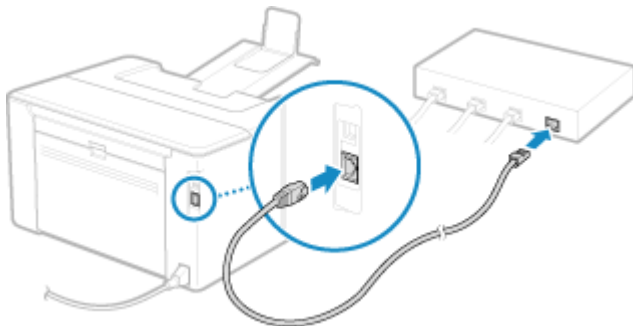
Connect printer to network first, please refer to following procedure

1. 開啟印表機
Turn on the printer

2. 在操作面板上，選擇 [首頁] 畫面中的 [功能表]，然後按下 **OK**
On the operation panel, select [Menu] in the [Home] screen and press **OK**



3. 按下 [參數選擇] ▶ [網路] ▶ [選擇有線/無線區域網路] ▶ **OK**
Press [Preferences] ▶ [Network] ▶ [Select Wired/Wireless LAN] ▶ **OK**
4. 選擇 [有線區域網路]，然後按下 **OK**
Select [Wired LAN] and press **OK**
5. 將乙太網路纜線連接到本機和路由器
Connect an Ethernet cable to the machine and router



等待約 2 分鐘，直到本機的 IP 位址設定完成

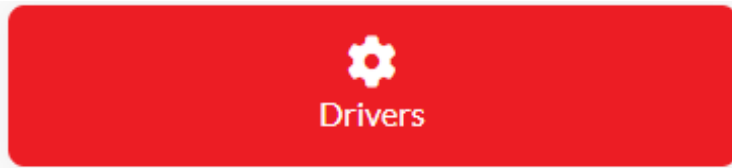
Wait approximately 2 minutes until IP address settings of the machine complete

下載及安裝步驟

Driver download and installation procedure

6. 到以下網站下載印表機的驅動程式
Go to below URL then download the printer driver
<https://hk.canon/en/support/imageclass%20bp122dw/model>

7. 選擇並下載以下檔案
Choose and download below file
- 打印機驅動程式 / Printer Driver



UFR II/UFR II LT Printer Driver & Utilities for Mac VXXXXXX

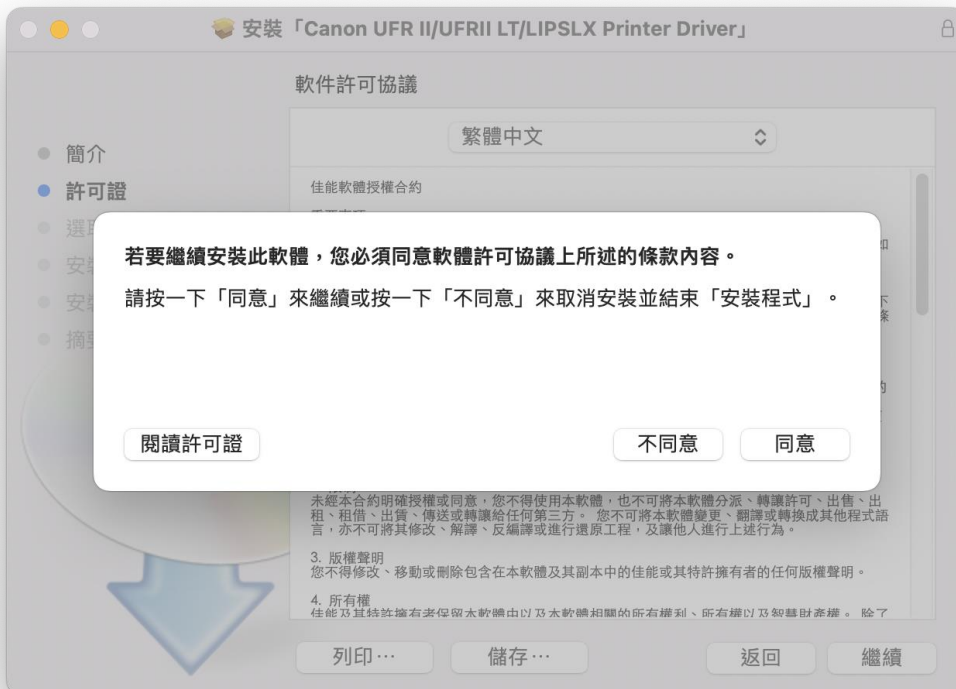
8. 下載完成後開啟檔案 [mac-UFR II-LIPSLX-XXXXXX.dmg]，按「UFR II_LT_LIPS_LX_Installer.pkg」
Open the downloaded file [mac-UFR II- LIPSLX-XXXXXX.dmg]，click “UFR II_LT_LIPS_LX_Installer.pkg”



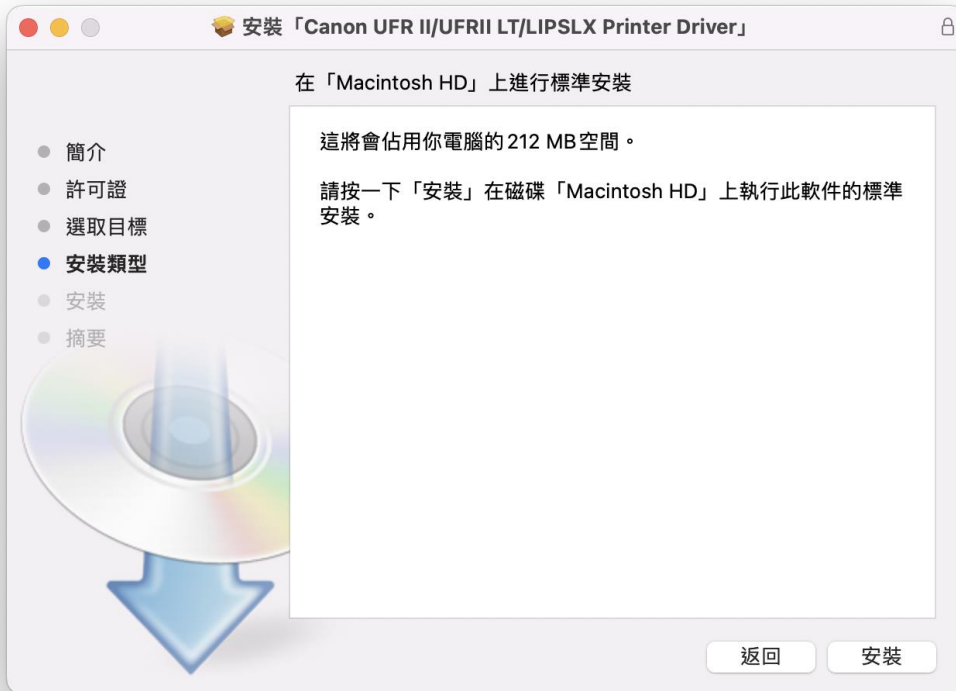
- 按「繼續」
Click “Continue”



- 按「繼續」然後按「同意」
Click “Continue” and then click “Agree”



11. 按「安裝」
Click "Install"



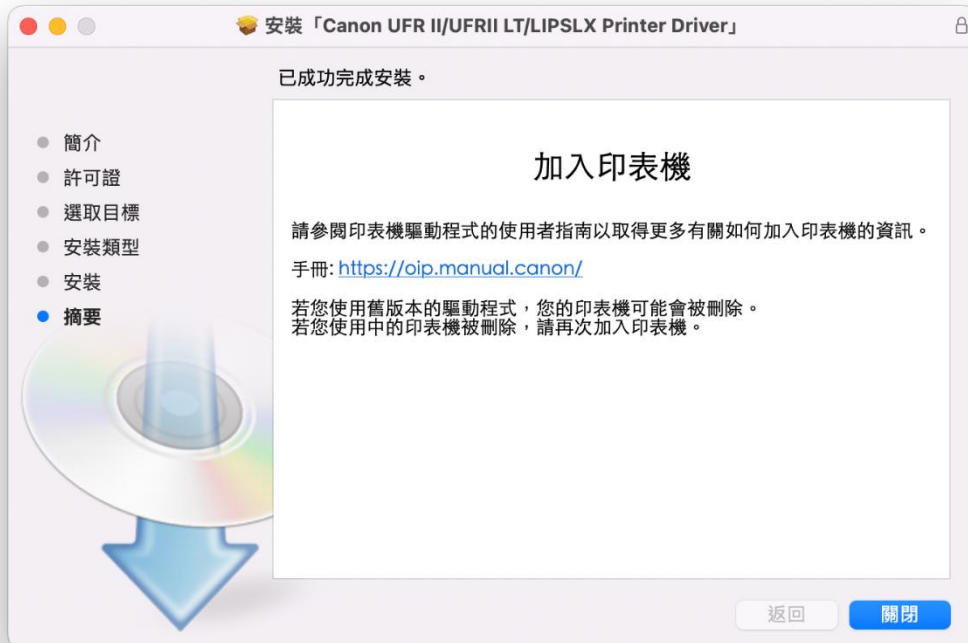
12. 輸入電腦帳戶密碼然後按「安裝軟件」
Input computer account password, then click "Install Software"



13. 等待安裝程序完成
Waiting for the installation progress



14. 按「關閉」
Click "Close"



15. 完成安裝驅動程式後需新增印表機，到「系統偏好設定」，選「印表機與掃描器」
Go to “System Preferences” and open “Printer and Scanner”

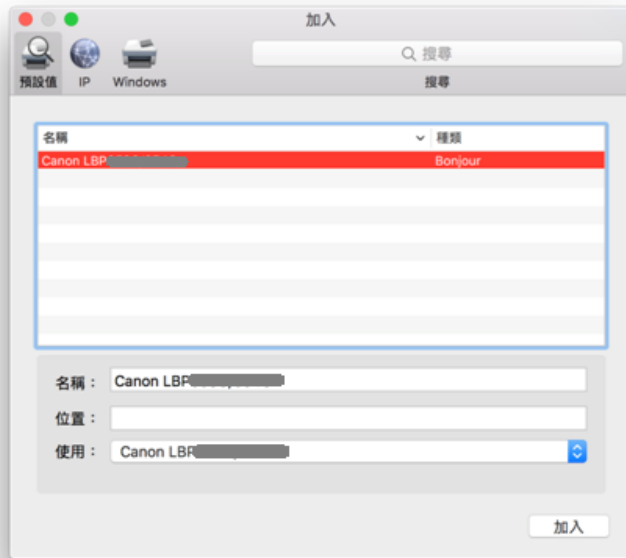


16. 選取左下角「+」按鈕，選「加入印表機或掃描器」
Click the “+” button and select “Add printer or Scanner”



17. 名稱選擇「Canon LBP122dw」，種類選擇「Bonjour」，使用選擇「Canon LBP122dw series」按「加入」，新增印表機驅動程式

Choose the Name “Canon LBP122dw” with “Bonjour”, and confirm selected “Canon LBP122dw series” in “Use”, then click “Add”



18. 完成以上設定後已可使用印表機作打印功能
Setup completed. Print functions are ready to use

-完-
-End-