



LBP673Cdw 在 Windows 透過無線 LAN 連線連接印表機之驅動程式步驟
Driver installation procedure for LBP673Cdw in Windows (Via Wireless LAN)

先將打印機連接到網路，詳細可參考以下步驟

Connect printer to network first, please refer to following procedure

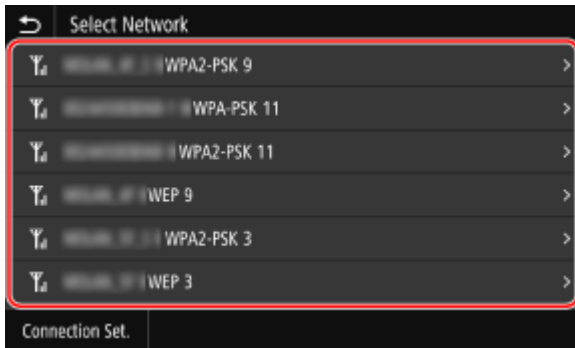
1. 開啟印表機
Turn on the printer

2. 在主畫面中點選 [] (無線區域網路設定)
 - 若顯示登入畫面，請輸入正確的系統管理員識別碼和 PIN，然後按 [登入]
 - 若顯示 [是否啟用無線區域網路?] 訊息，請選擇 [是]

On the operation panel, press [] (Wireless LAN Settings) in the [Home] screen

- If the login screen appears, enter the System Manager ID and PIN, and then press [Log In].
- If the message [Do you want to enable the wireless LAN?] appears, press [Yes].

3. 選擇要連接的無線區域網路路由器名稱(SSID)
Select the SSID of the wireless LAN to which you want to connect



4. 輸入網路密碼，然後按 [套用]
Enter the network key, and press [Apply]
5. 等待主畫面顯示 [已連線。]，然後按 [關閉]
When [Connected.] is displayed on the operation panel, press [Close]

等待約 2 分鐘，直到本機的 IP 位址設定完成

Wait approximately 2 minutes until IP address settings of the machine complete

下載及安裝步驟

Driver download and Installation procedure

6. 到以下網站下載印表機的驅動程式及掃描軟件
Go to below URL then download the printer driver and scanner software
<https://hk.canon/en/support/imageCLASS%20LBP673Cdw/model>

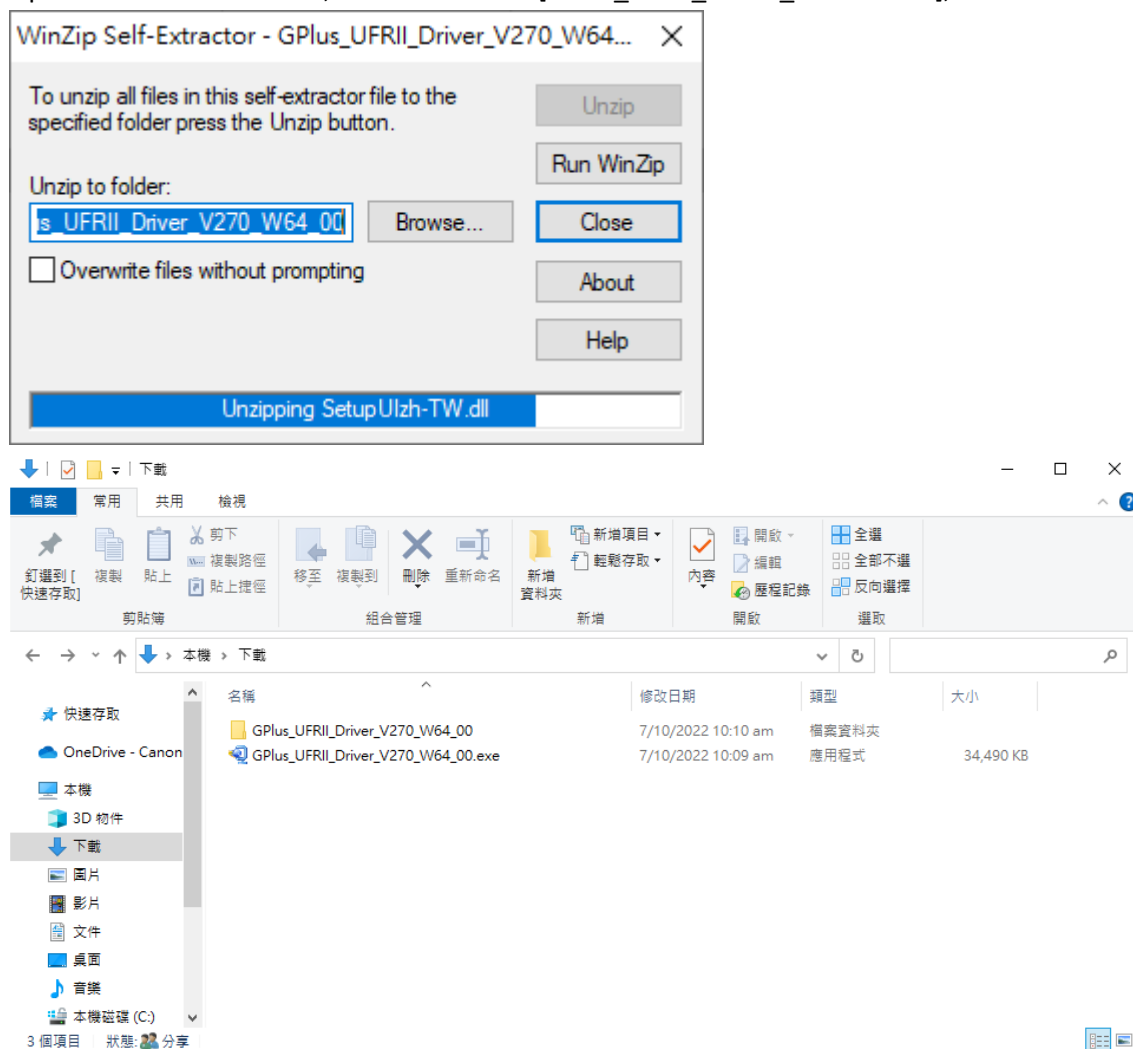
7. 選擇並下載以下檔案
Choose and download below file:

- 打印機驅動程式 / Printer Driver

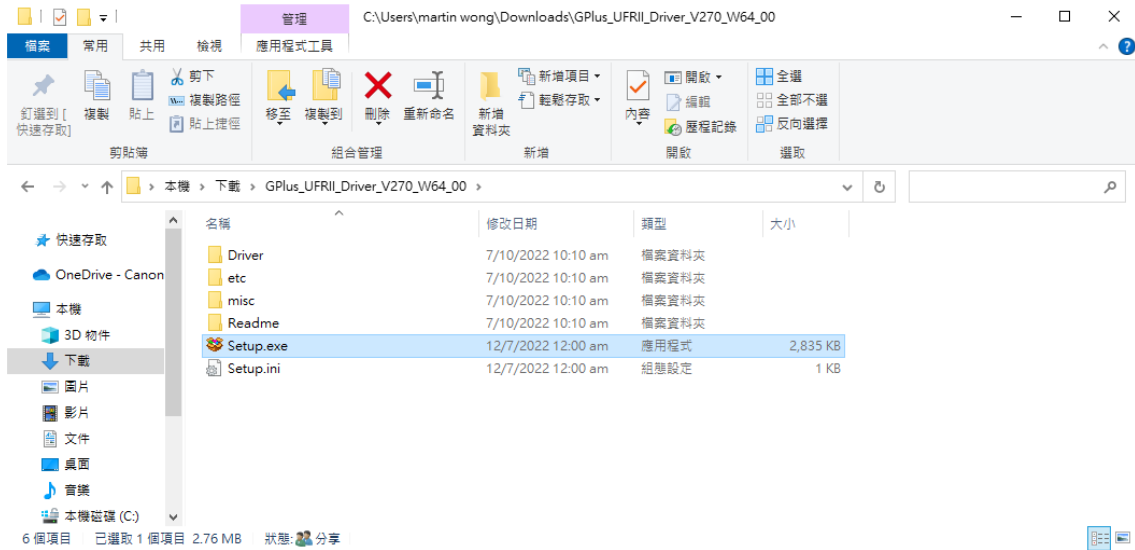


[Windows x64bit] Generic Plus UFR II Printer Driver Vx.xx

8. 打開下載的資料夾，然後執行檔案〔GPlus_UFR II_Driver_XXXXXX.exe〕並等候解壓縮。
Open the download folder, then run the file [GPlus_UFR II_Driver_XXXXXX.exe], and wait for unzip



9. 打開 [GPLus_UFR1I_Driver_XXXXXX] 資料夾，開啟 [Setup.exe] 檔案並安裝
Go into folder [GPLus_UFR1I_Driver_XXXXXX], open file [Setup.exe] and start installation

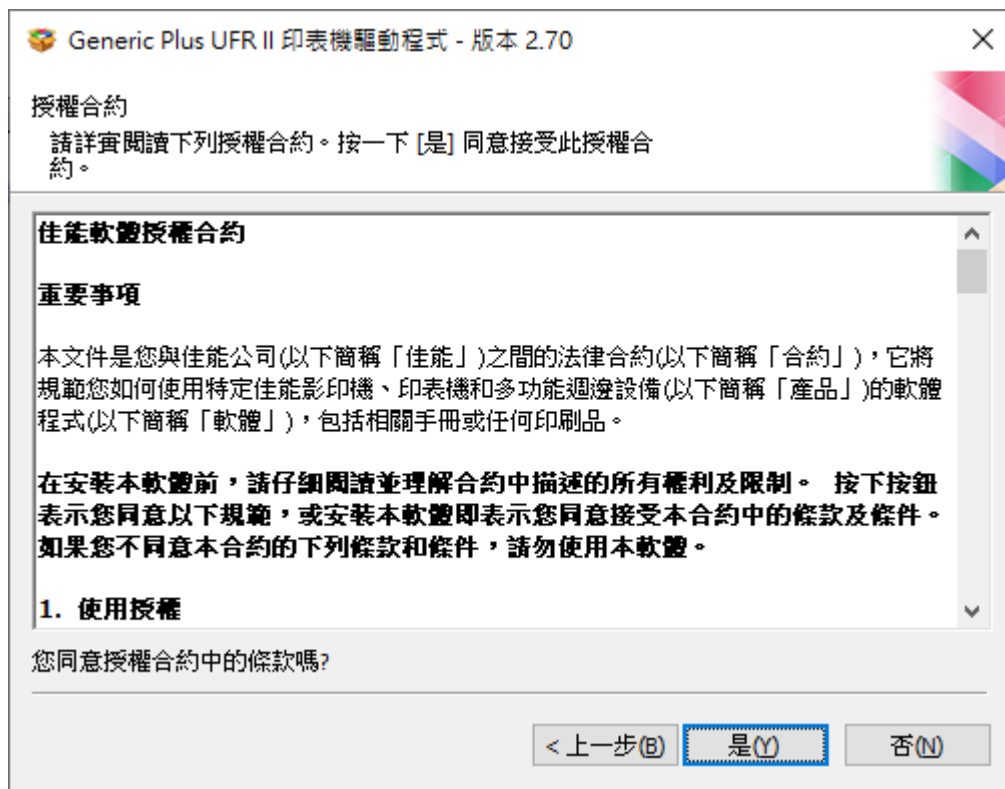


10. 按「下一步」
Click "Next"



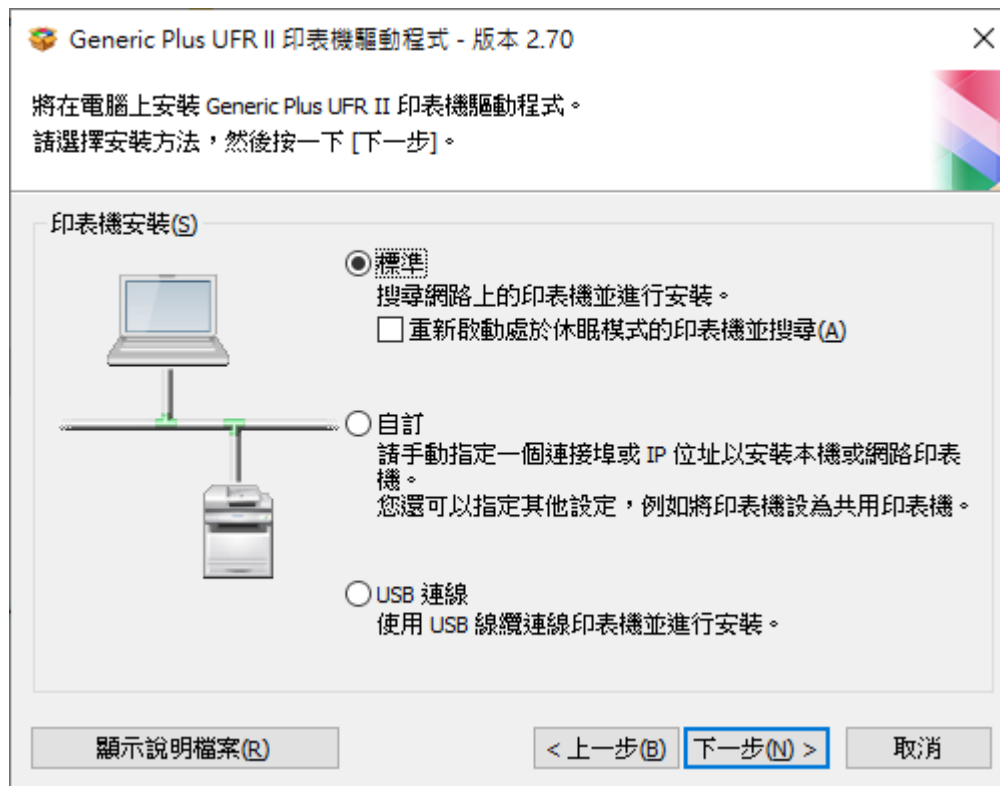
11. 按「Yes」

Click "Yes"



12. 選擇「標準」，按「下一步」

Choose "Standard", click "Next"



13. 按「下一步」
Click “Next”



14. 程式會自動偵測網絡上的印表機，選擇後按「下一步」
Program will automatic detect the network printer, choose printer and click “Next”



15. 按「啟動」
Click “Start”



16. 等待安裝程序完成
Waiting for the installation progress



17. 按「離開」完成安裝
Click "Exit" to finish install



-完-
-End-