

在 Windows 以無線方式安裝及連接 PIXMA E3470 打印機

Installing PIXMA E3470 on Windows via WiFi connection

*請開啟打印機並確保電腦已連接互聯網

*Please turn on the printer and make sure computer already connected to the internet

以下步驟及畫面僅供參考，實際操作畫面可能因裝置型號、系統或軟件版本而有所不同。

The following steps and screens are for reference only, and the actual operation screens may vary depending on the device model, system, or software version.

請參考以下簡易無線連接方法設定印表機的無線功能

Please refer to following Easy wireless connect to setup the Wi-Fi of printer

簡易無線連接

Easy wireless connect

1. 在智慧型手機或平板電腦安裝 **Canon PRINT Inkjet/SELPHY**

Install **Canon PRINT Inkjet/SELPHY** on smartphone or table

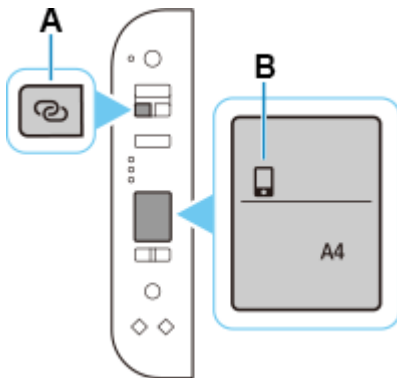
Android:

<https://play.google.com/store/apps/details?id=jp.co.canon.bsd.ad.pixmaprint>

iOS:

<https://apps.apple.com/us/app/pixma-printing-solutions/id664425773>

2. 按住印表機上的**無線連接(Wireless connect)**按鈕(A)，然後在  (B) 閃爍時釋放按鈕
Press and hold the **Wireless connect** button (A) on the printer, and then release the button when  (B) flashes



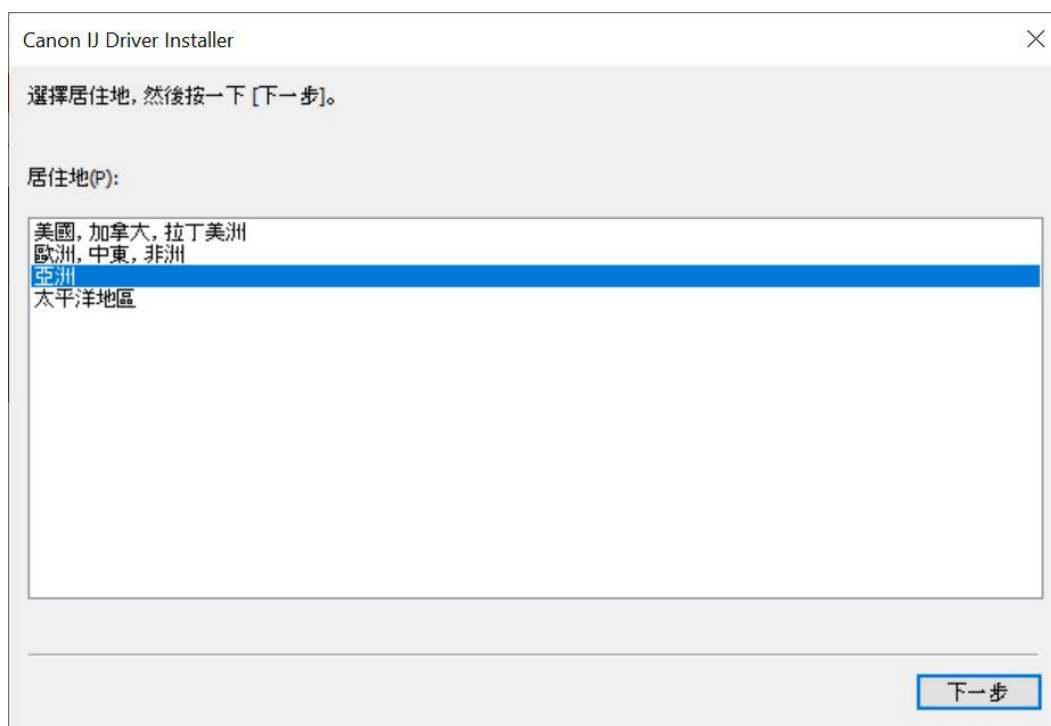
8. 按〔下一步〕

Click [Next]

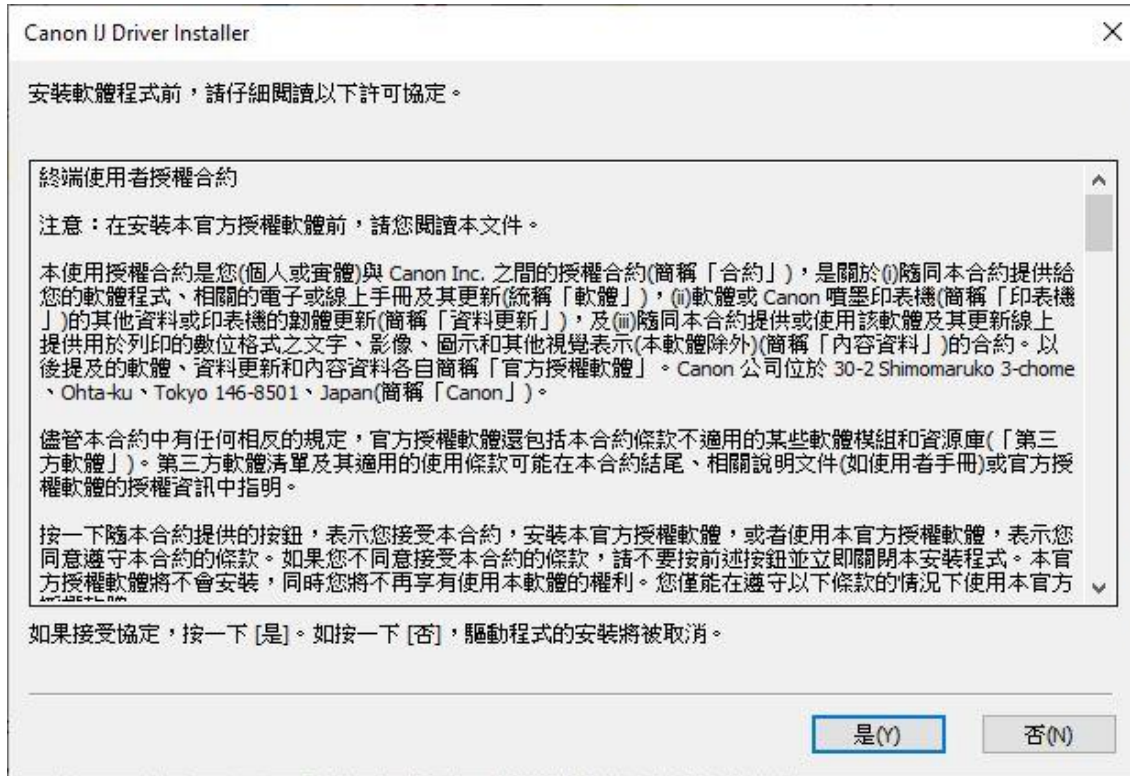


9. 選擇〔亞洲〕，按〔下一步〕

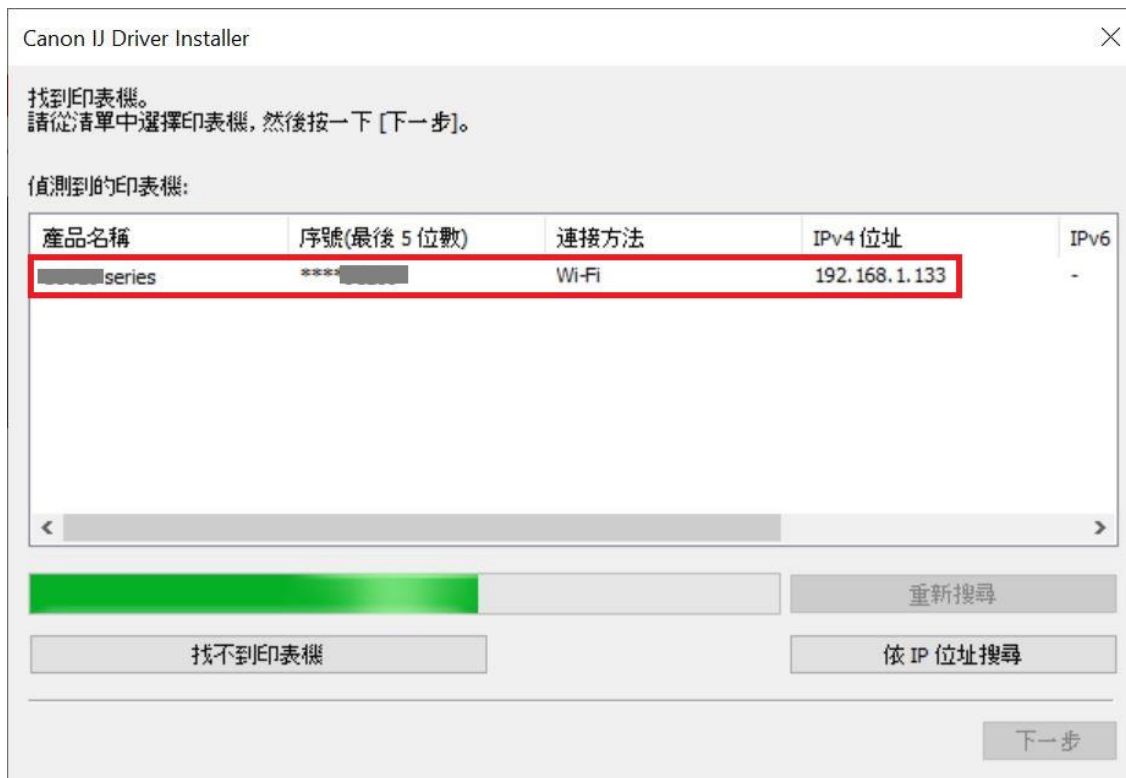
Select [Asia]; click [Next]



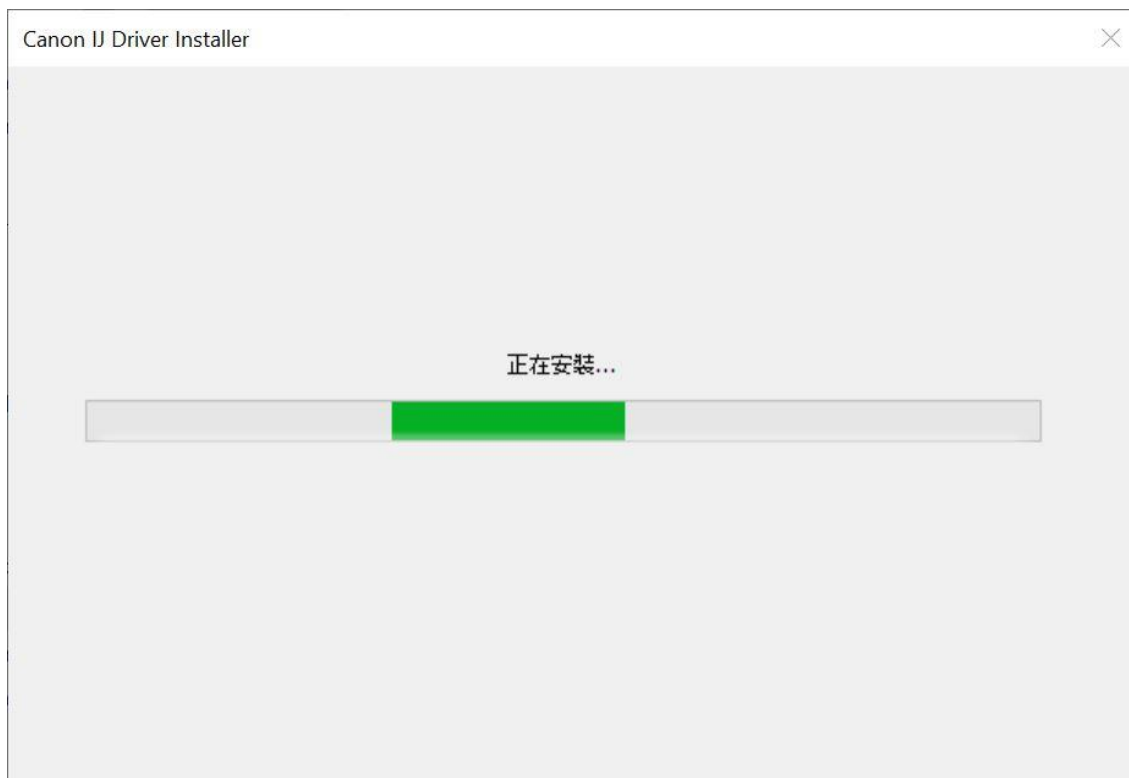
10. 按〔是〕
Click [Yes]



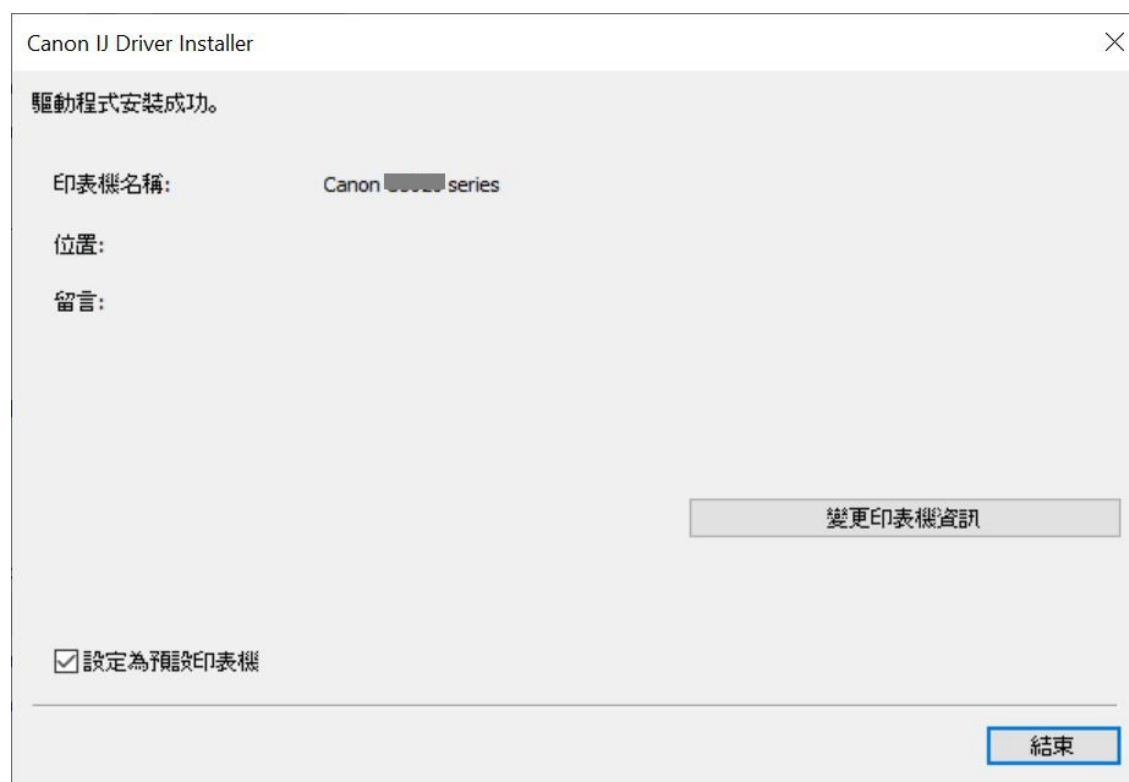
11. 選擇連接方法為 Wi-Fi 的打印機，按〔 下一步〕
Select the printer with connection method as Wi-Fi, click [Next]



12. 正在安裝印表機驅動程式，請稍候
Installing the driver, please wait



13. 安裝完成，按〔結束〕
Driver installation was completed; click [Finish]



-完-
-End-