

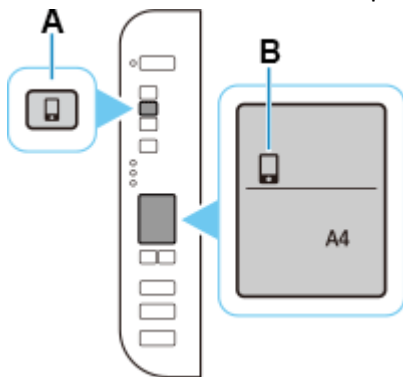
TS3470 - 無線設定 (流動裝置)

TS3470 – Wi-Fi Setup (Mobile Device)

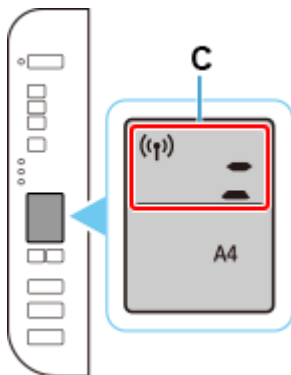
以下步驟及畫面僅供參考，實際操作畫面可能因裝置型號、系統或軟件版本而有所不同。

The following steps and screens are for reference only, and the actual operation screens may vary depending on the device model, system, or software version.

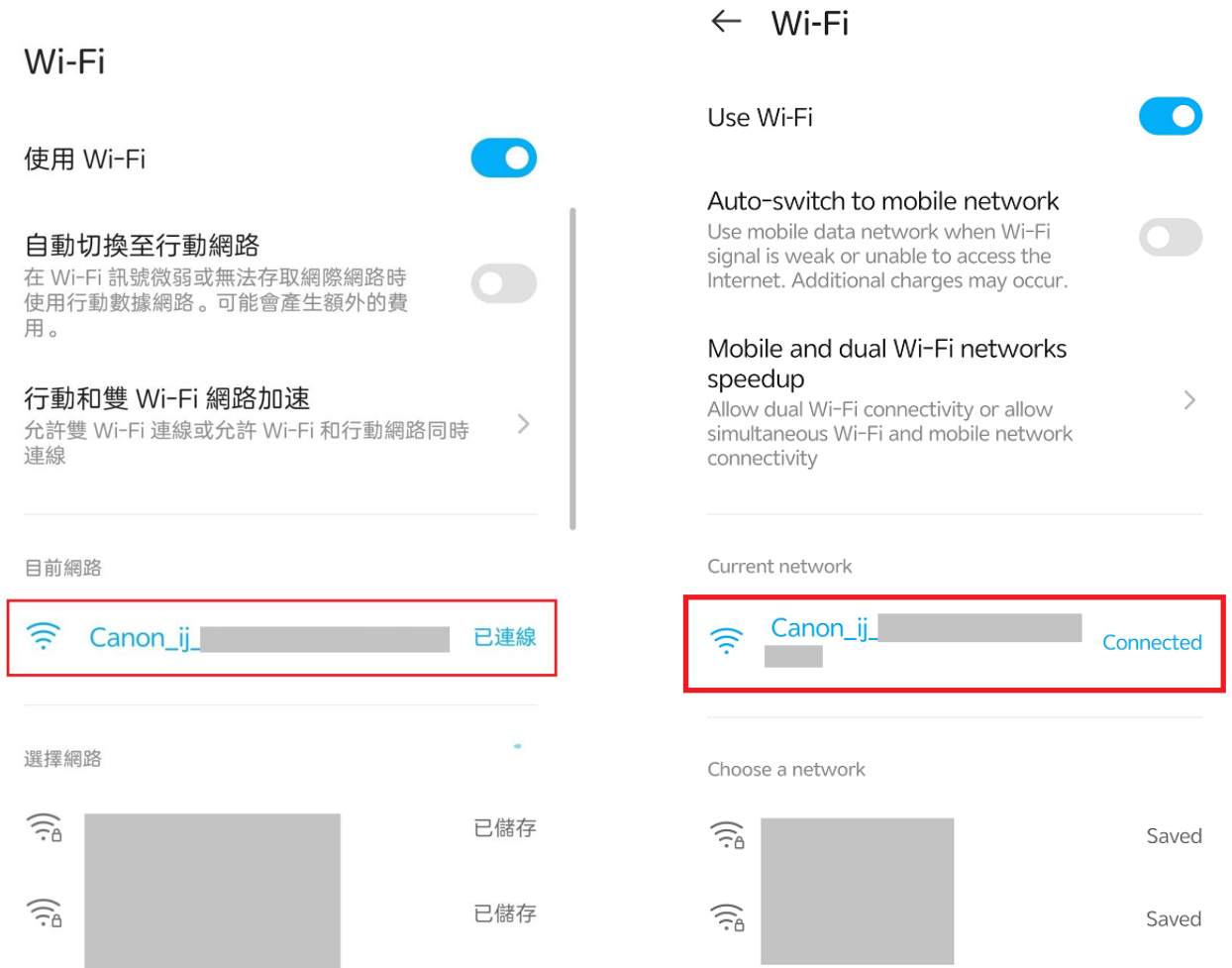
1. 在智慧型手機或平板電腦安裝 Canon PRINT
Install Canon PRINT on smartphone or table
Android: <https://play.google.com/store/apps/details?id=jp.co.canon.bsd.ad.pixmaprint>
iOS: <https://apps.apple.com/hk/app/canon-print/id664425773>
2. 按住印表機上的**直接連接** (手機圖示 ) 的按鈕，直至看到屏幕的手機圖示  閃爍時，鬆開該按鈕
Press and hold the **Direct (Mobile icon )** button on the printer, and then release the button when the mobile icon  flashes on the LCD display



3. 確保屏幕上的無線圖示  及水平橫條閃爍
Make sure the wireless icon  and the horizontal bars flash.



4. 從智慧型手機或平板電腦上的 Wi-Fi 設定中選擇印表機的網路名稱(以「Canon_ij_」開頭的 SSID)
Select the printer's network name start with (Canon_ij_) from the Wi-Fi settings on your smartphone or table



5. 執行 Canon PRINT
Run the Canon PRINT



Canon

6. 按“同意”接受許可協定
Tap “Agree” to accept the License Agreement

許可協定	License Agreement
<p>終端使用者授權合約</p> <p>注意：在安裝或使用本官方授權軟體前，請您閱讀本文件。</p> <p>本使用授權合約是您(個人或實體)與 Canon Inc. 之間的授權合約(簡稱「合約」)，是關於(i)隨同本合約提供給您的軟體程式、相關的電子或線上手冊及其更新(統稱「軟體」)，(ii)軟體或 Canon 印表機(簡稱「印表機」)的其他資料或印表機的韌體更新(簡稱「資料更新」)，及(iii)隨同本合約提供或使用該軟體及其更新線上提供用於列印的數位格式之文字、影像、圖示和其他視覺表示(本軟體除外)(簡稱「內容資料」)的合約。以後提及的軟體、資料更新和內容資料各自簡稱「官方授權軟體」。Canon 公司位於 30-2 Shimomaruko 3-chome、Ohta-ku、Tokyo 146-8501、Japan(簡稱「Canon」)。</p> <p>儘管本合約中有任何相反的規定，官方授權軟體還包括本合約條款不適用的某些軟體模組和資源庫(「第三方軟體」)。第三方軟體清單及其適用的使用條款可能在本合約結尾、相關說明文件(如使用者手冊)或官方授權軟體的授權資訊中指明。</p> <p>按一下隨本合約提供的按鈕，表示您接受本合約，安裝本官方授權軟體，或者使用本官方授權軟體，表示您同意遵守本合約的條款。如果您不同意接受本合約的條款，請不要按前述按鈕並立即關閉本安裝程式。本官方授權軟體將不會安裝，同時您將不再享有使用本軟體的權利。您僅能在遵守以下條款的情況下使用本官方授權軟體。</p> <p>1. 所有權和著作權：本官方授權軟體的所有權利、資格和權益為 Canon 或其授權人所有。Canon 或其授權人</p>	<p>END USER LICENSE AGREEMENT</p> <p>ATTENTION: PLEASE READ THIS DOCUMENT BEFORE INSTALLING OR USING THE LICENSED SOFTWARE.</p> <p>This is a license agreement ("Agreement") between you (either an individual or an entity) and Canon Inc., having its place of business at 30-2 Shimomaruko 3-chome, Ohta-ku, Tokyo 146-8501, Japan ("Canon"), with respect to (i) software programs provided to you with this Agreement, its associated electronic or online manuals, and updates thereof, if any (collectively, the "Software"), (ii) additional data for the Software or Canon's printers ("Printers") or updates to firmware for the Printers, provided online using the Software ("Data Updates"), and (iii) text, images, graphics and other visual representations in digital format (excluding the Software) for your printing use, provided with this Agreement or provided online using the Software, and updates thereof, if any ("Contents Data"). Software, Data Updates and Contents Data shall hereinafter be referred to individually or collectively as the "Licensed Software".</p> <p>Notwithstanding anything contained herein to the contrary, Licensed Software also includes certain software modules and libraries to which the terms of this Agreement do not apply ("Third Party Software"). The list of Third Party Software and the terms of use applicable thereto may be indicated at the end of this Agreement, relevant documentation such as user manual, or the license information displayed in the Licensed Software.</p> <p>BY CLICKING THE BUTTON PROVIDED WITH THIS AGREEMENT INDICATING YOUR ACCEPTANCE OF THIS AGREEMENT, INSTALLING THE LICENSED SOFTWARE, OR OTHERWISE USING THE LICENSED SOFTWARE YOU AGREE TO BE BOUND BY THE TERMS OF THIS AGREEMENT. IF YOU DO NOT AGREE TO THE TERMS OF THIS AGREEMENT, DO NOT CLICK</p>
<p><input type="button" value="不同意"/> <input checked="" type="button" value="同意"/></p>	<p><input type="button" value="Do not agree"/> <input checked="" type="button" value="Agree"/></p>

7. (可選) 勾選同意資料傳送設定，然後按“確定”
 (Optional) Check the boxes and agree the settings for Data Sending, and then tap “OK”

使用前

可以隨時變更資料傳送設定。
[隱私權原則](#)

[可選] Canon 將收集並使用與使用此應用程式以及已連接印表機相關的服務所需的資訊(請參閱以下連結獲取詳細資訊)。

[詳細資訊](#)

同意

[可選] Canon 將收集並使用有關您在此應用程式和已連接印表機上的活動資訊，以開發我們的產品和服務並提高品質等(請參閱以下連結獲取詳細資訊)。

[詳細資訊](#)

同意

[可選] 我訂閱接收來自 Canon 的限時搶購和特別優惠等訊息。

同意

全部勾選

確定

Before Use

you can change your settings for data sending at any time.
[Privacy Policy](#)

[Optional] Canon collects and uses the information that is necessary to use this application and the services related to the connected printers (please see the link below for details).

[Details](#)

Agree

[Optional] Canon collects and uses the information about your activities on this application and the connected printers, to develop our products and services and improve their quality etc. (please see the link below for details).

[Details](#)

Agree

[Optional] I subscribe to receive messages about flash deals and special offers etc. from Canon.

Agree

Check all

OK

8. 授予應用程式權限，按“確定”
 Grant app permissions, tap “OK”

如果顯示要求權限的對話方塊，請點選 [使用應用程式時]。要使用此應用程式，您必須授予以下權限。

精確定位

此應用程式需要存取智慧型手機的精確定位，才能搜尋無線路由器和印表機。此資訊不會收集或用於任何其他目的。

附近的裝置

此應用程式需要存取智慧型手機附近的裝置，才能透過直接連接連接到印表機。此資訊不會收集或用於任何其他目的。

取消 **確定**

If a dialog box asking for permission appears, please tap [While using the app]. To use this app, you must grant the following permissions.

Precise Location

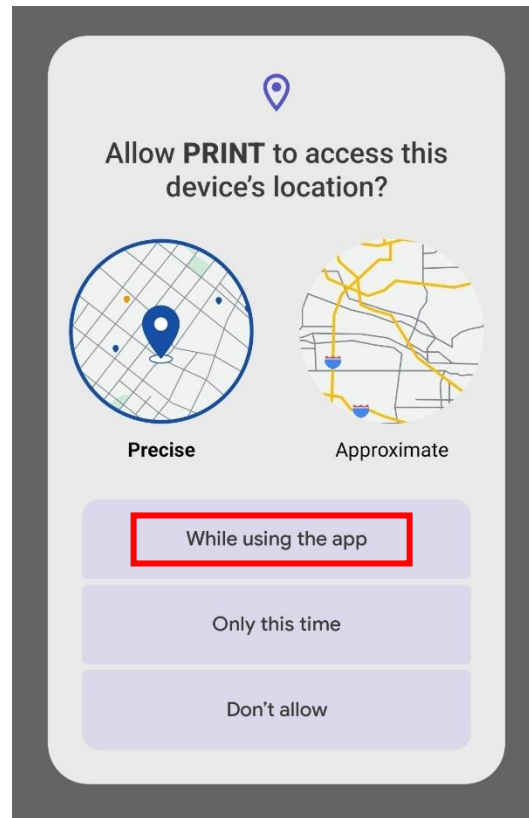
Access to the smartphone's precise location is required for this app to search for wireless routers and printers. This information will not be collected or used for any other purpose.

Nearby devices

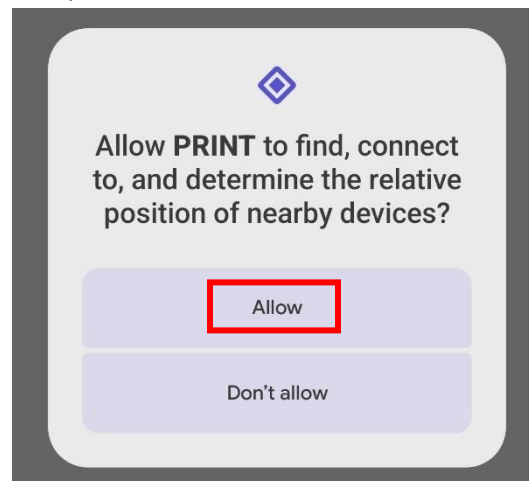
Access to the smartphone's nearby devices is required for this app to connect to the printer using direct connection. This information will not be collected or used for any other purpose.

Cancel **OK**

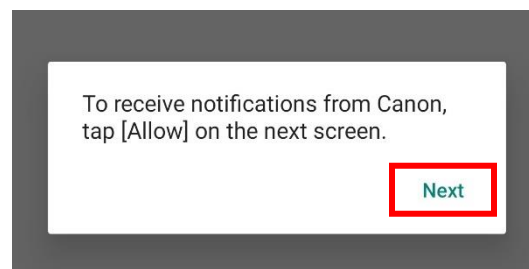
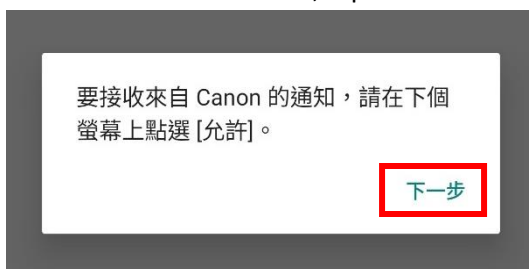
9. 允許存取此裝置的位置權限，按“使用應用程式時”
Allow to access this device's location permission, tap "While using the app"



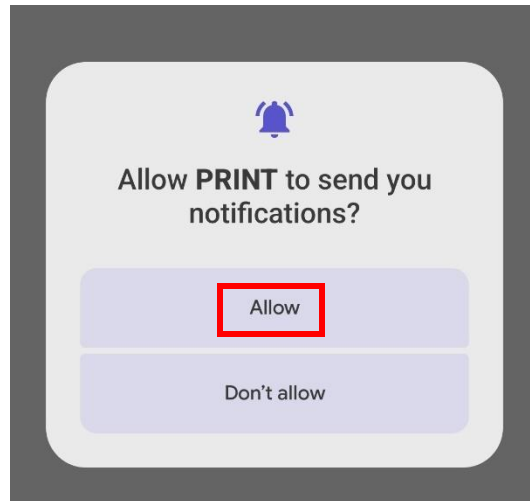
10. 允許尋找附近裝置的相對位置，按“允許”
Allow to find the relative position of nearby devices, tap "Allow"



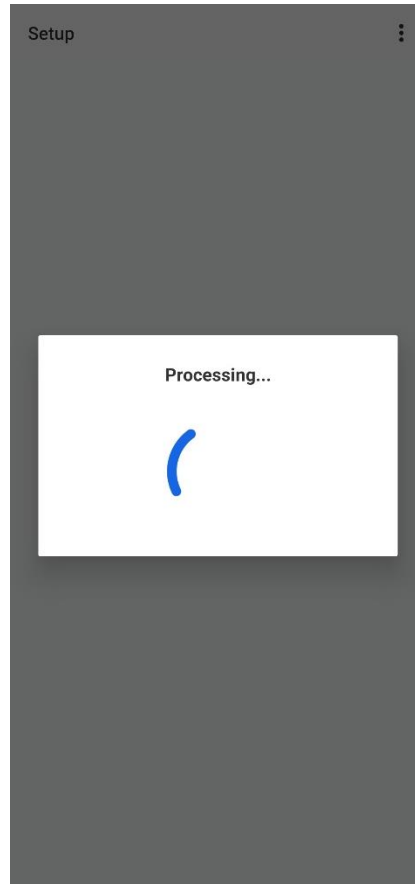
11. 設定要接收通知，按“下一步”
Set to receive notification, tap "Next"



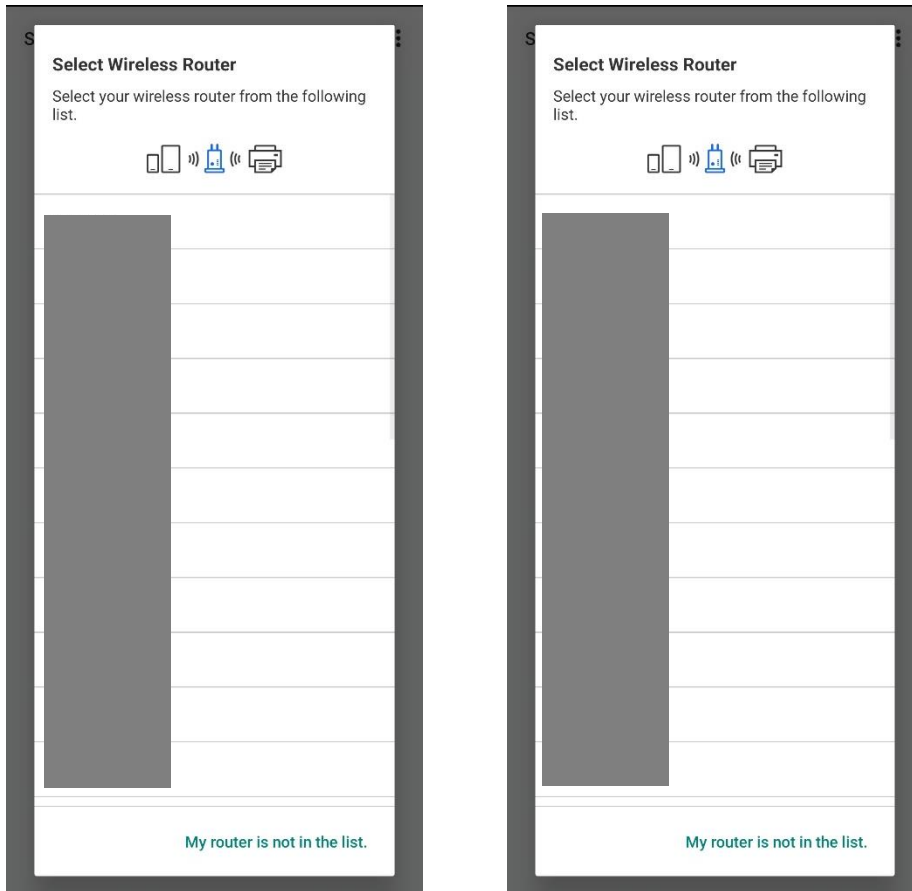
12. 如允許接收通知，按“允許”
If allow to receive notification, tap “Allow”



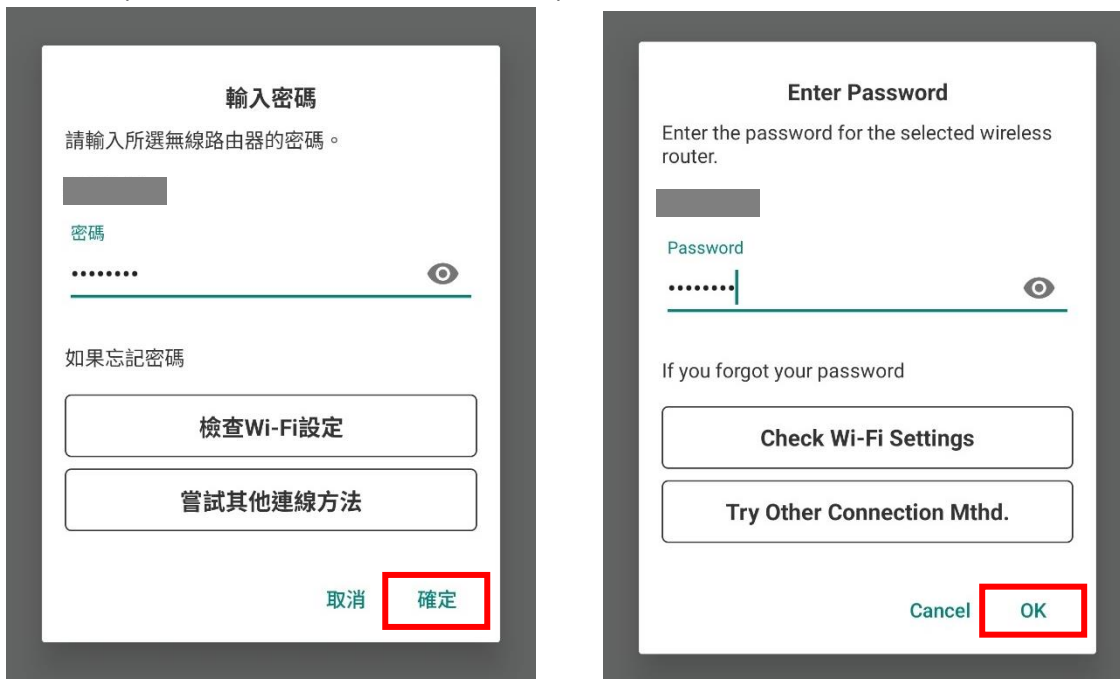
13. 處理中，請稍候
Processing, please wait



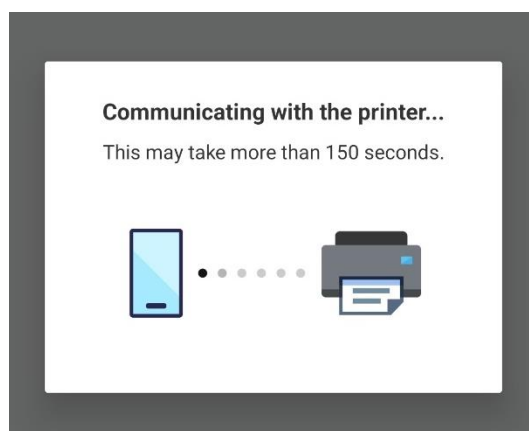
14. 從清單中點選要連接印表機的無線路由器網路名稱
Tap the wireless router SSID which the printer will be connected from the list



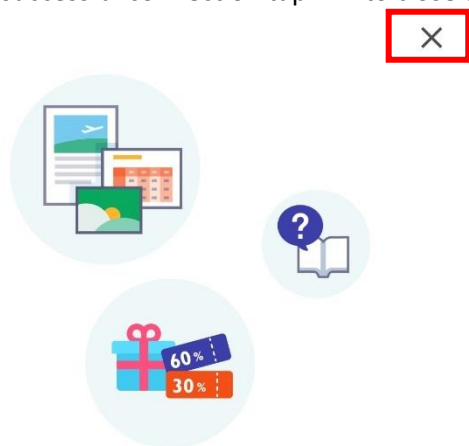
15. 輸入無線路由器的密碼，然後按“確定”
Enter the password of wireless router, then tap “OK”



16. 正在與印表機通訊，請稍候
Communicating with the printer, please wait



17. 連接成功後按“X”關閉提示畫面
After successful connection tap “X” to close the prompt



試試看！

前往 Canon 網站，取得有關最大限度地利用印表機的資訊。您可以在該網站上下載應用程式以及存取服務。



試試看！

前往 Canon 網站，取得有關最大限度地利用印表機的資訊。您可以在該網站上下載應用程式以及存取服務。



18. 選擇影像嘗試列印或按“X”關閉

Choose the photo and try to print, or tap “X” to close



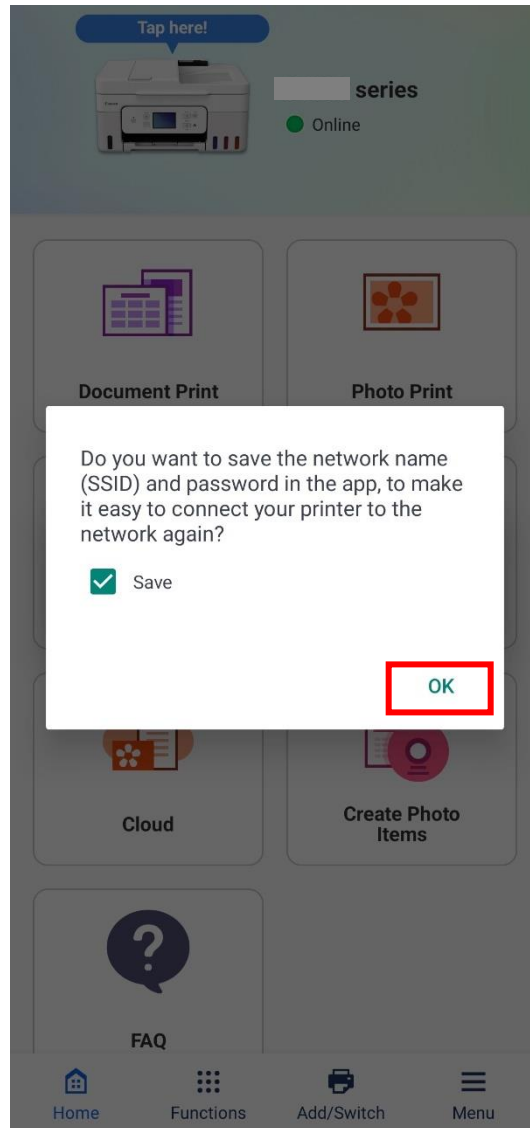
現在選擇您喜愛的相片並嘗試列印吧！

Now choose your favorite photo and try it out!

選擇影像

Select Images

19. 按“確定”並完成無線設定
Tap “OK” and complete the wireless setup



-完-
-End-