

## LBP226dw 在 Windows 透過 USB 連線連接印表機之驅動程式步驟 Driver installation procedure for LBP226dw in Windows (Via USB)

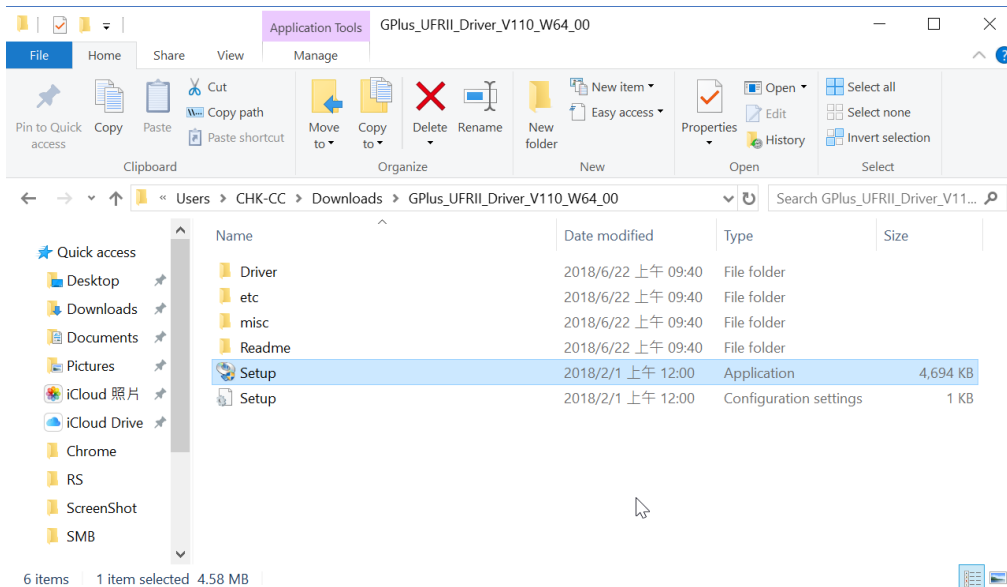
**\*\*注意: 安裝驅動程式前請勿接駁 USB 線，以免系統發生錯誤\*\***  
**\*\* Please don't plug the USB cable until the driver asked to do so\*\***

### 下載及安裝步驟

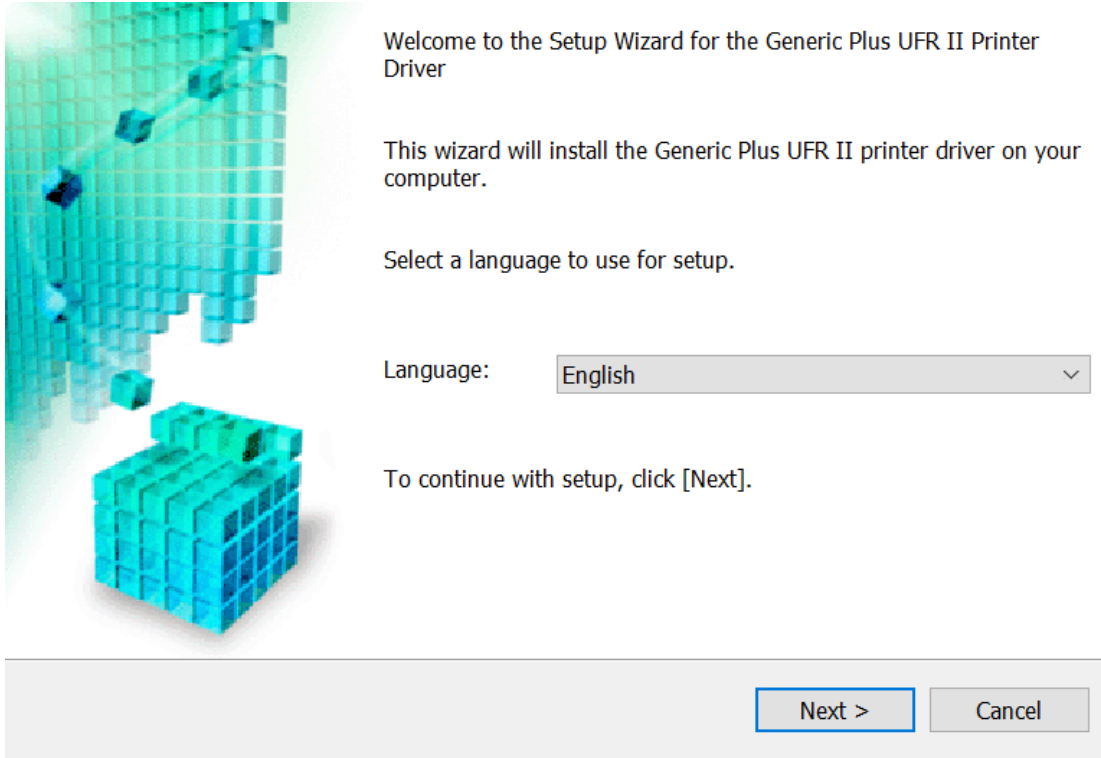
#### Driver download and Installation procedure

1. 到佳能網站 <https://hk.canon/en/support/imageclass%20lp226dw/model>，下載印表機的驅動程式  
Go to: <https://hk.canon/en/support/imageclass%20lp226dw/model>, download the printer driver
2. 選擇並下載以下檔案  
Choose and download below file:  
  
- 打印機驅動程式 / Printer Driver  
**[Windows xbit] Generic Plus UFR II Printer Driver Vx.xx**
3. 下載的文件以自解壓縮檔檔案(.exe 格式)保存在指定的文件夾中，打開文件解壓縮。將在同一文件夾中創建新文件夾。新文件夾的名稱與解壓縮文件的名稱相同，進入新文件夾開啟「Setup.exe」開始安裝

Open the downloaded file, a same name new folder will be created. Go into new folder open "Setup.exe" start installation"



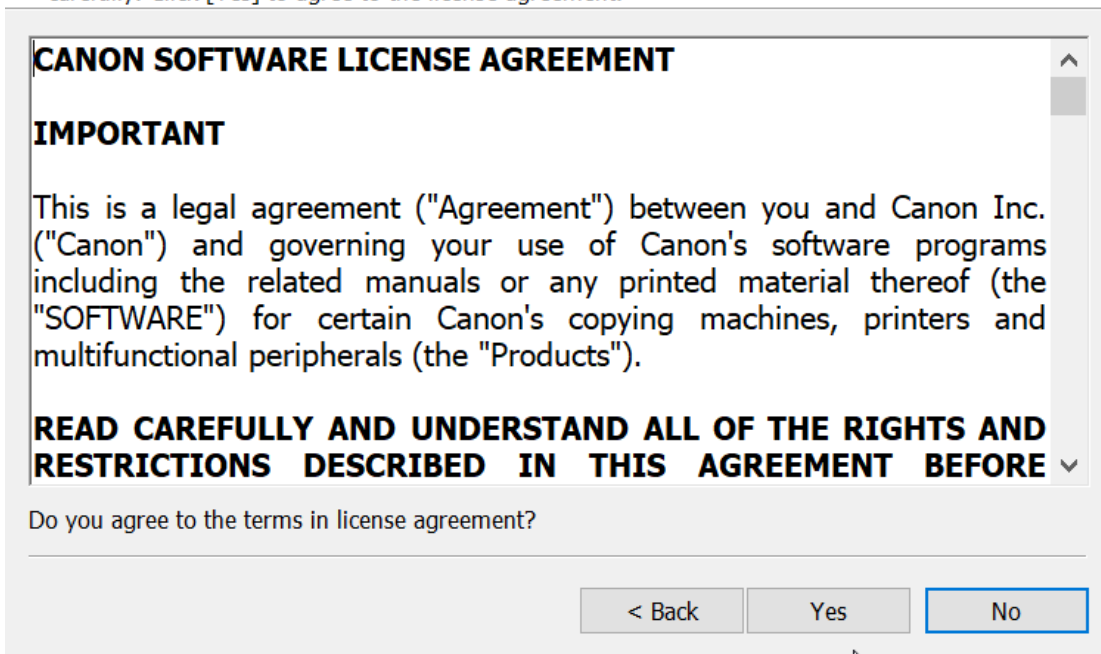
4. 選擇語言 (Language) ，然後按 「Next」  
Select Language, press "Next"



5. 選擇 「Yes」  
Choose "Yes"

License Agreement

Please read the following license agreement completely and carefully. Click [Yes] to agree to the license agreement.




6. 選擇「USB Connection」，按「Next」  
Choose “USB Connection”, press “Next”

The Generic Plus UFR II printer driver will be installed on your computer.  
Select a setup method, and then click [Next].



Printer Setup



Standard  
Search for printers on the network and install.  
 Reactivate Printers in the Sleep Mode and Search

Custom  
Specify a port or an IP address manually to install drivers of local or network printers.  
You can also specify other settings, such as setting a printer as a shared printer.

USB Connection  
Connect the printer with a USB cable and install.

Display Readme File      < Back      Next >      Cancel

7. 按「Yes」  
Press “Yes”



Installation cannot be canceled once started. Do you want to continue?

Yes      No

8. 等待安裝程序完成

Wait for the installation progress

Installing...

The program features you selected are being installed.



Setup Wizard is installing the UFR II printer driver. Please wait...

Status:

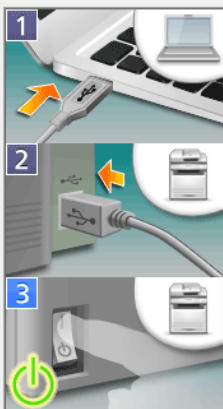
Registering printer...



9. 接駁 USB 線及開啟印表機

Connect device with USB cable and switch on the printer

USB Connection

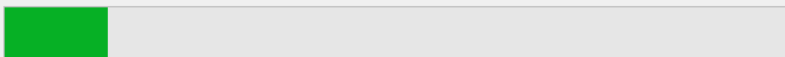


Follow the steps below to install the printer driver:

Status:

1. Connect the USB cable to the computer.
2. Connect the USB cable to the printer.
3. If the printer power is off, turn on the printer. The printer will be recognized automatically and installation of printer drivers will start.

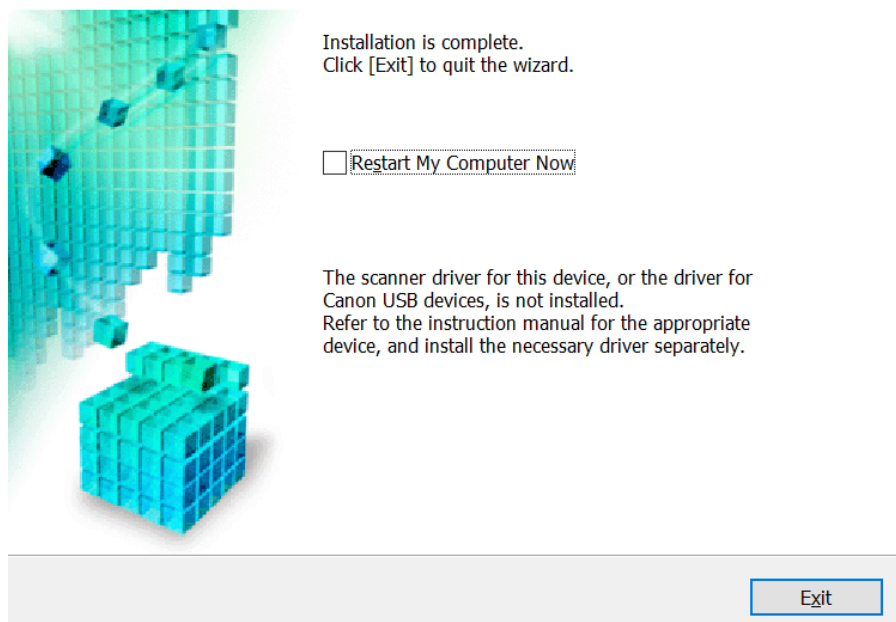
If the printer is not automatically recognized even with the USB cable connected, disconnect the cable from the printer after turning off the printer, and then connect the cable again.



Skip

10. 成功偵測印表機後按「Exit」完成安裝

Click "Exit" to finish installation after device detected by computer.



-完-  
-End-