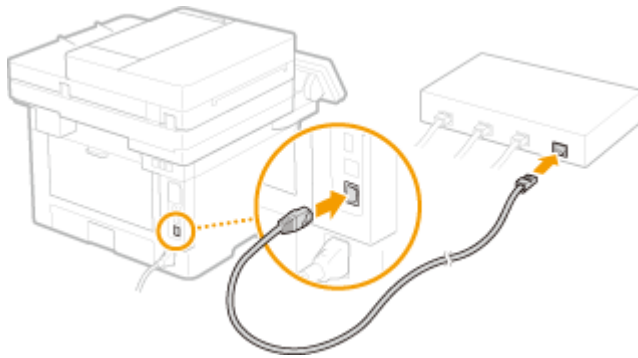


MF441dw / MF445dw / MF449x 在 Windows 透過 LAN 連線連接印表機之驅動程式步驟
Driver installation procedure for MF441dw / MF445dw / MF449x in Windows (Via Wired LAN)

先將打印機連接到網路，詳細可參考以下步驟

Connect printer to network first, please refer to following procedure

1. 開啟印表機
Turn on the printer
2. 在主畫面中點選「功能表」
Tap “Menu” in the Home Screen
3. 點選「參數選擇」，再點選「網路」
Tap “Preferences”, then tap “Network”
4. 點選「有線 / 無線區域網路」
Tap “Select Wired / Wireless LAN”
5. 點選 <有線區域網路>
Tap “Wired LAN”
6. 使用區域網路纜線將本機連接到路由器
推入接頭，直至聽到喀嗒聲
Connect the machine to router by using a LAN cable, push the connector in until it clicks into place



等待約 2 分鐘，直到本機的 IP 位址設定完成

Wait approximately 2 minutes until IP address settings of the machine complete

下載及安裝步驟

Driver download and installation procedure

7. 到佳能網站 <https://hk.canon/en/support/imageCLASS%20MF449x/model>，下載印表機的驅動程式

Go to: <https://hk.canon/en/support/imageCLASS%20MF449x/model>, then download the printer driver

8. 選擇並下載以下檔案

Choose and download below files:

- 打印機驅動程式 / Printer Driver

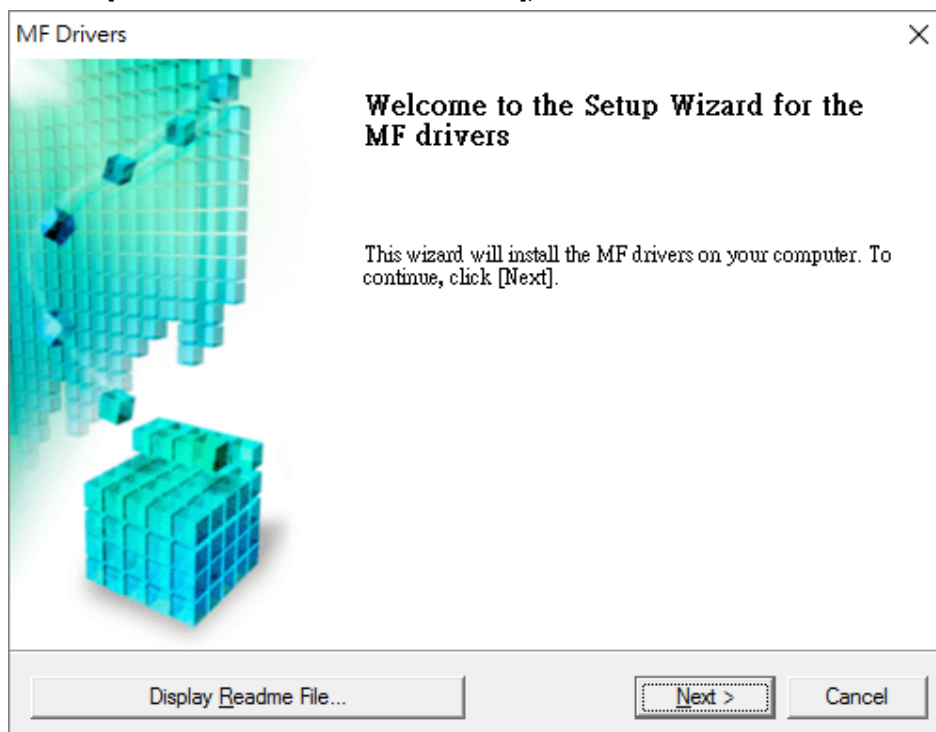
[\[Windows xxbit\] MF449x/MF445dw/MF441dw MFDivers \(Generic Plus UFR II / Generic Plus PCL6 / Generic Plus PS3 / Generic FAX / ScanGear\)](#)

- 掃描軟件/ Scanning Software

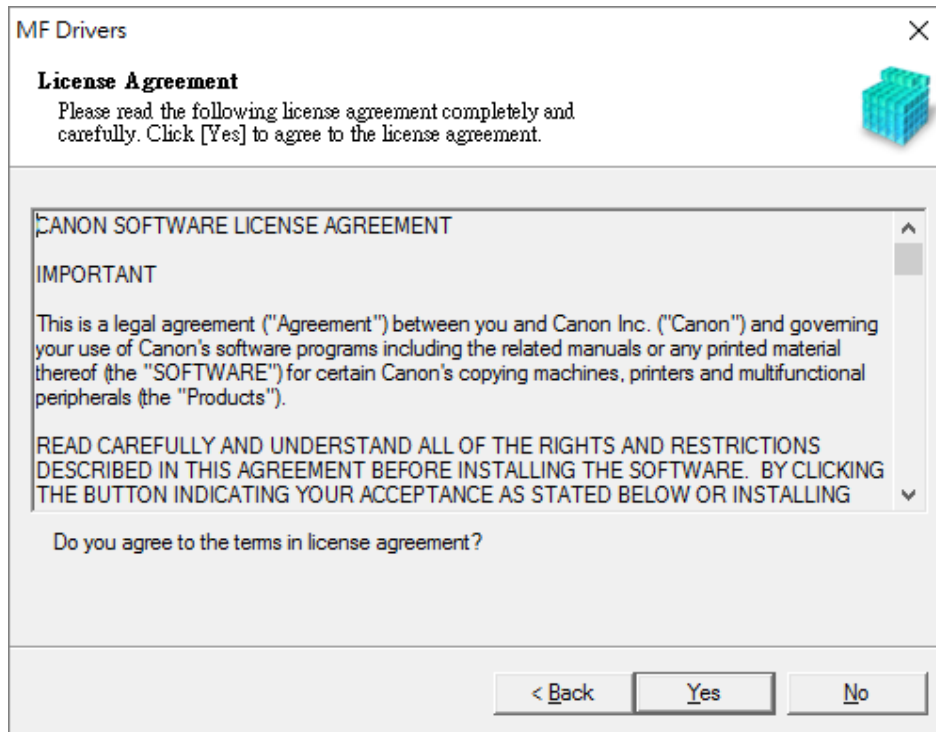
[\[Windows 32bit & 64bit\] MF Scan Utility Ver.*.*](#)

9. 執行檔案〔MF440SeriesMFDriverxxxxxx.exe〕按「Next」

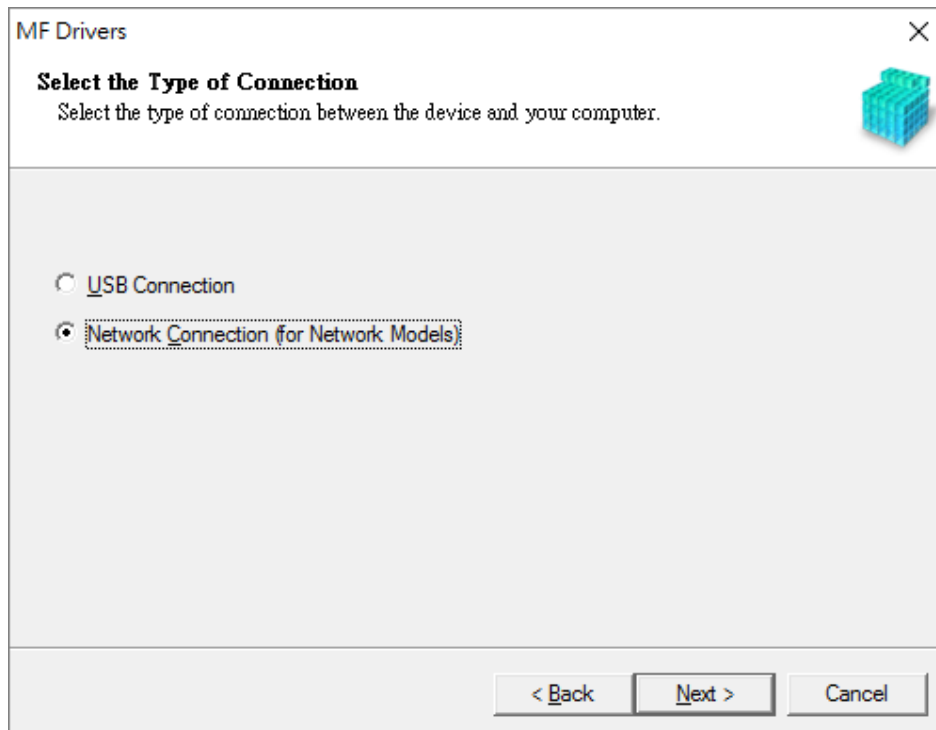
Run File [MF440SeriesMFDriverxxxxxx.exe], click "Next"



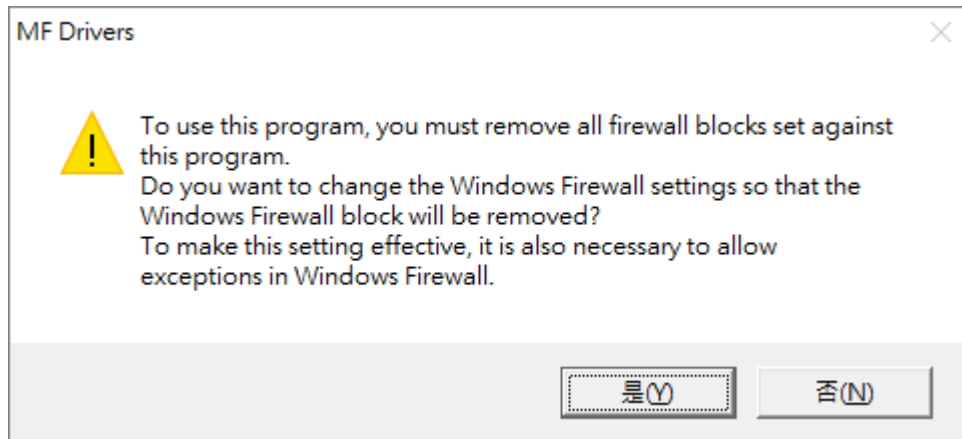
10. 按「Yes」
Click “Yes”



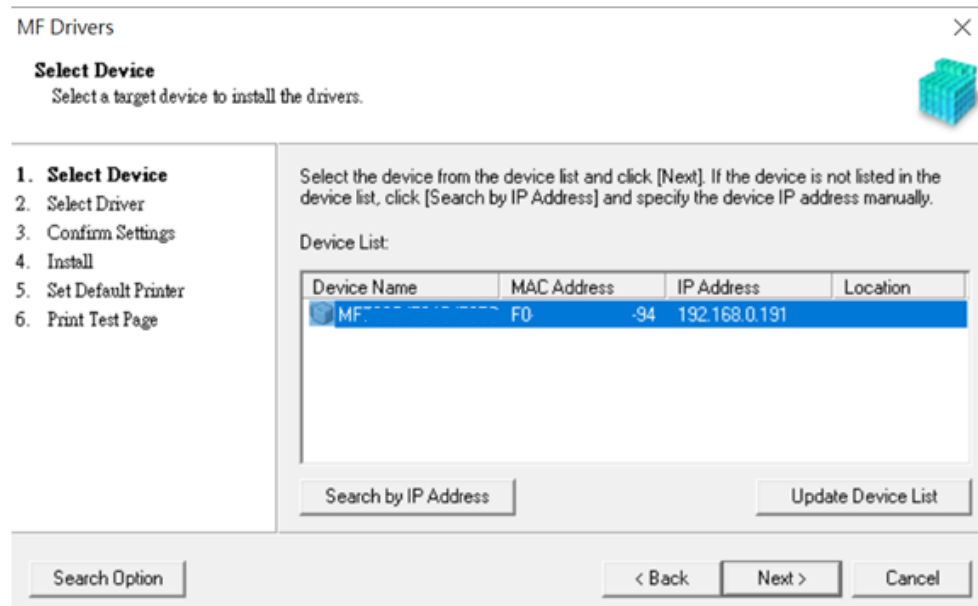
11. 選擇「Network connection (for Network Models)」，按「Next」
Choose “Network connection (for Network Models)”, click “Next”



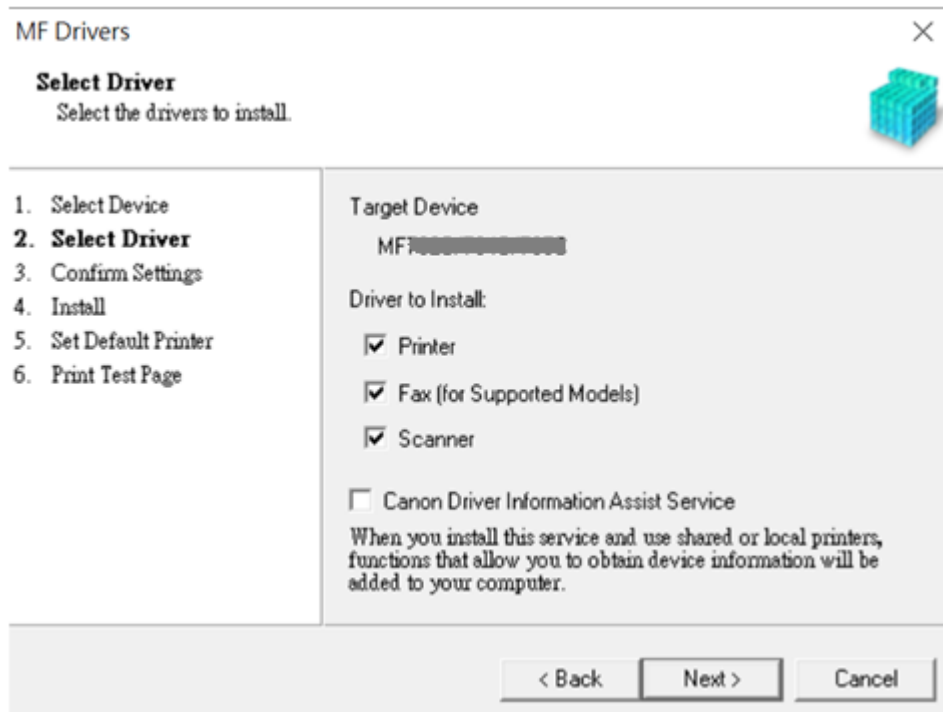
12. 按「是」
Click "Yes"



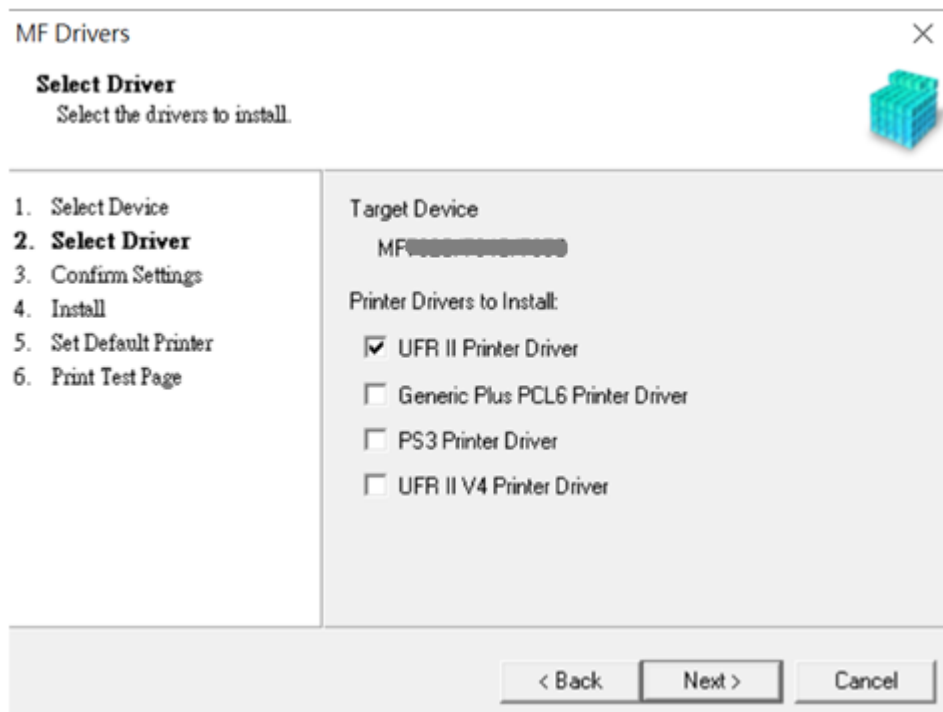
13. 程式會自動偵測網絡上的印表機，選擇後按「Next」
Program will automatic detect the network printer, choose printer and click "Next"



14. 按「Next」
Click “Next”



15. 按「Next」
Click “Next”



16. 按「Next」
Click "Next"

MF Drivers

Confirm Settings
Confirm the following setting details.

1. Select Device
2. Select Driver
3. **Confirm Settings**
4. Install
5. Set Default Printer
6. Print Test Page

You can change the printer name. If you specify this printer as a shared printer, you can specify the shared printer name and set an additional driver (alternate driver). Confirm the settings, and then click [Next].

Printer

Port: CNMFNP_F0
Driver: Canon MF... UFR II
Printer Name: Canon MF... UFR II

Use as Shared Printer
Shared Name: _____
Drivers to Add...

Current Device: 1
Number of Devices to Set: 2

< Back Next > Cancel

17. 按「Next」
Click "Next"

MF Drivers

Confirm Settings
Confirm the following setting details.

1. Select Device
2. Select Driver
3. **Confirm Settings**
4. Install
5. Set Default Printer
6. Print Test Page

You can change the fax name. If you specify this fax as a shared fax, you can specify the shared fax name and set an additional driver (alternate driver). Confirm the settings, and then click [Next].

Fax

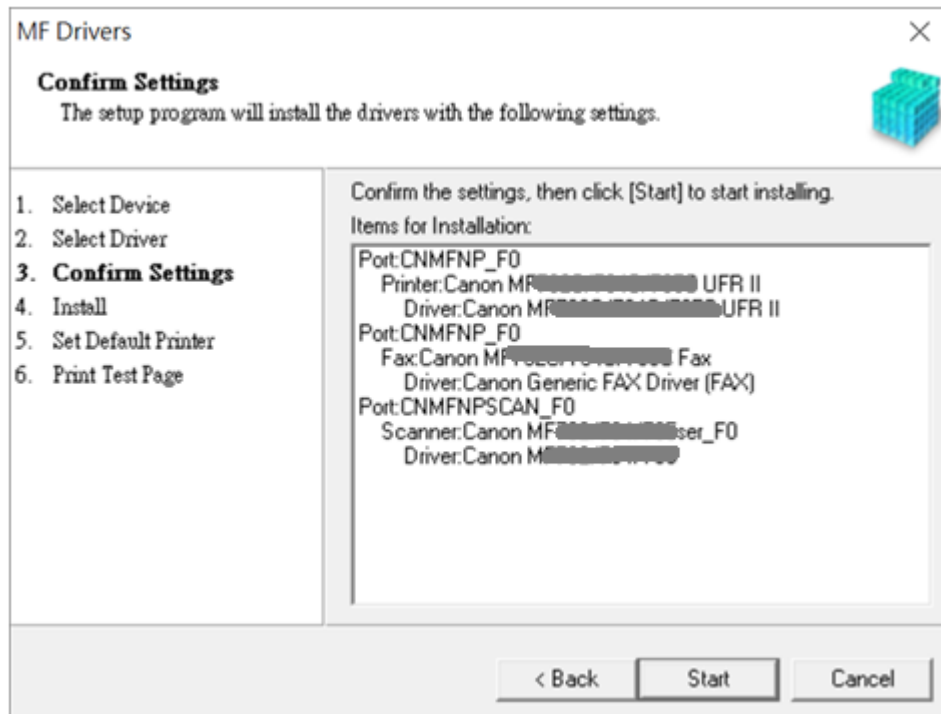
Port: CNMFNP_F0
Driver: Canon Generic FAX Driver (FAX)
Fax Name: Canon MF... Fax

Use as Shared Fax
Shared Name: _____
Drivers to Add...

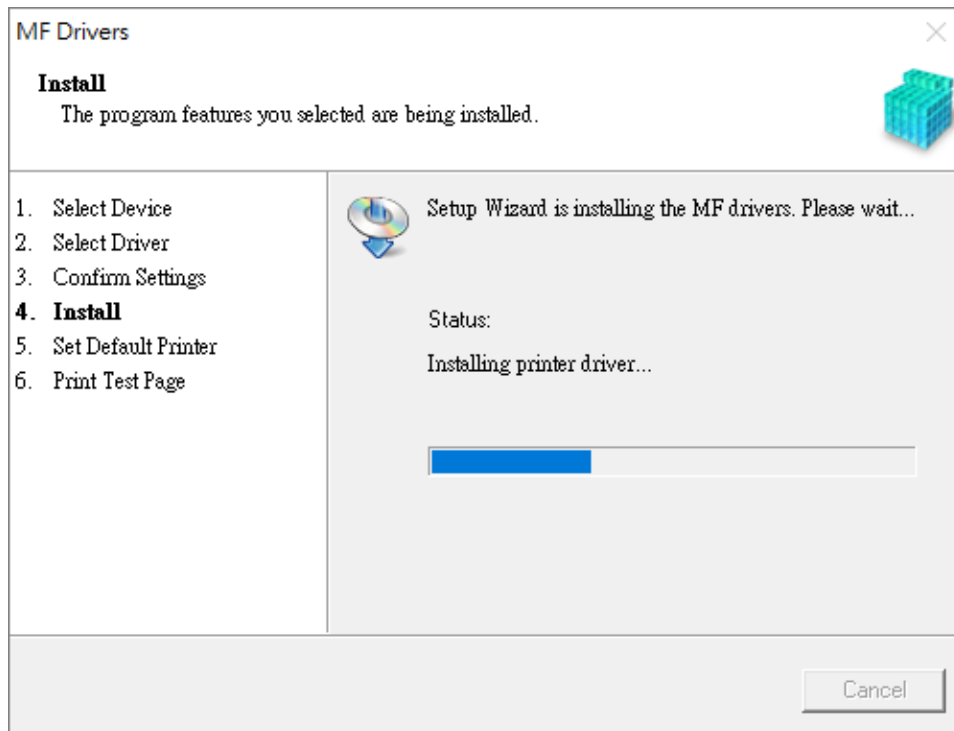
Current Device: 2
Number of Devices to Set: 2

< Back Next > Cancel

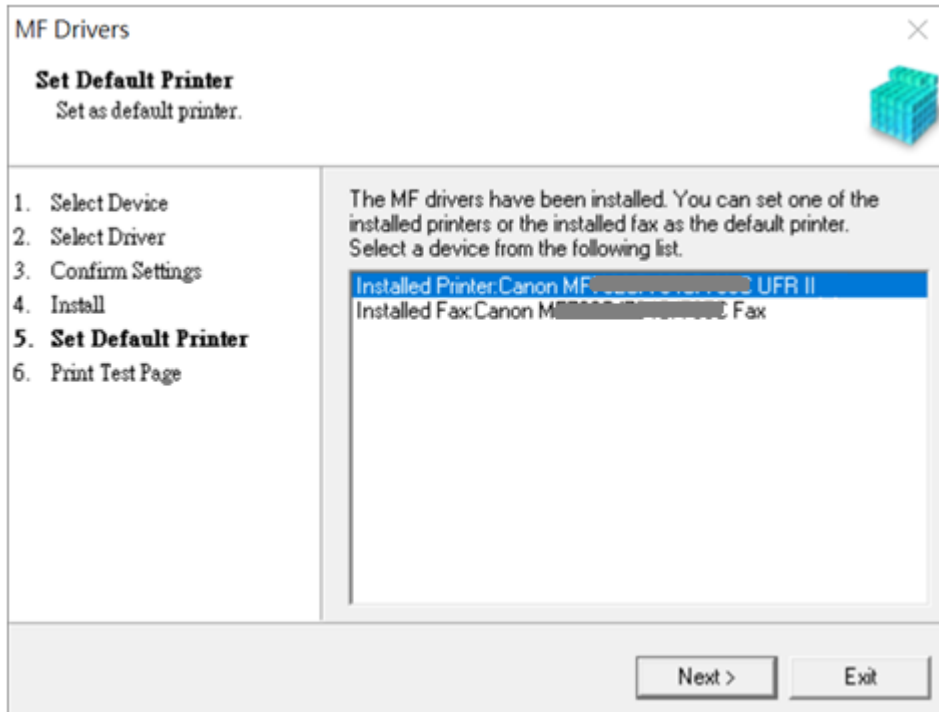
18. 按「Start」
Click "Start"



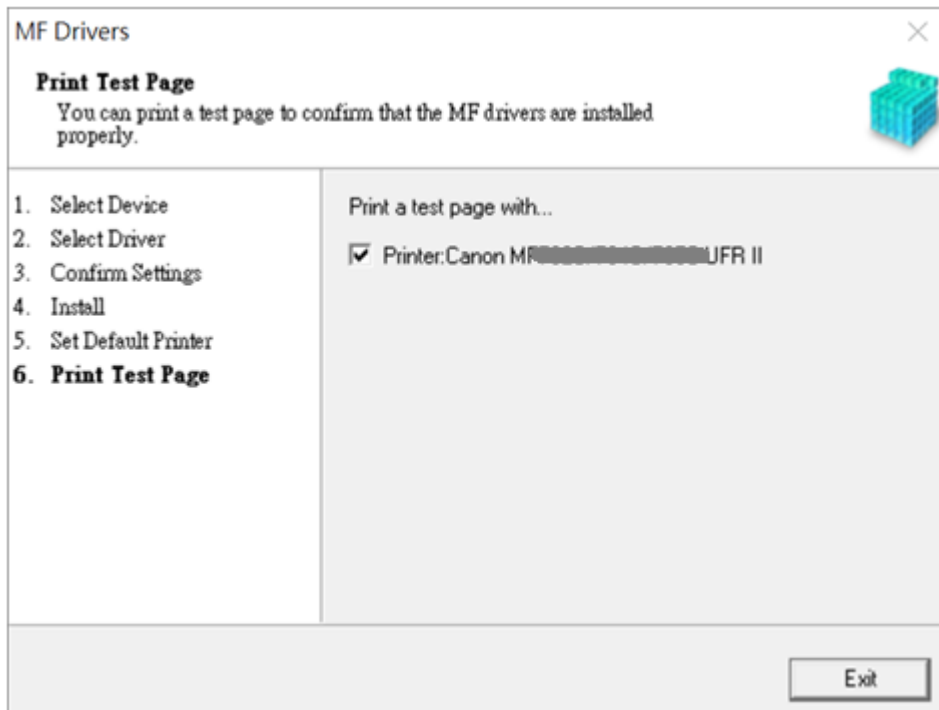
19. 等待安裝程序完成
Waiting for the installation progress



20. 選擇打印機，然後按「Next」
Choose printer, then click “Next”

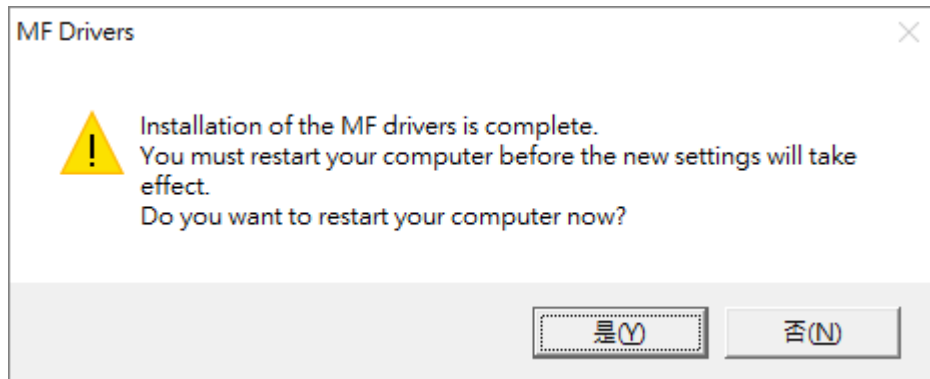


21. 按「Exit」
Click “Exit”



22. 按「是」重啟電腦

Click “Yes” to restart computer

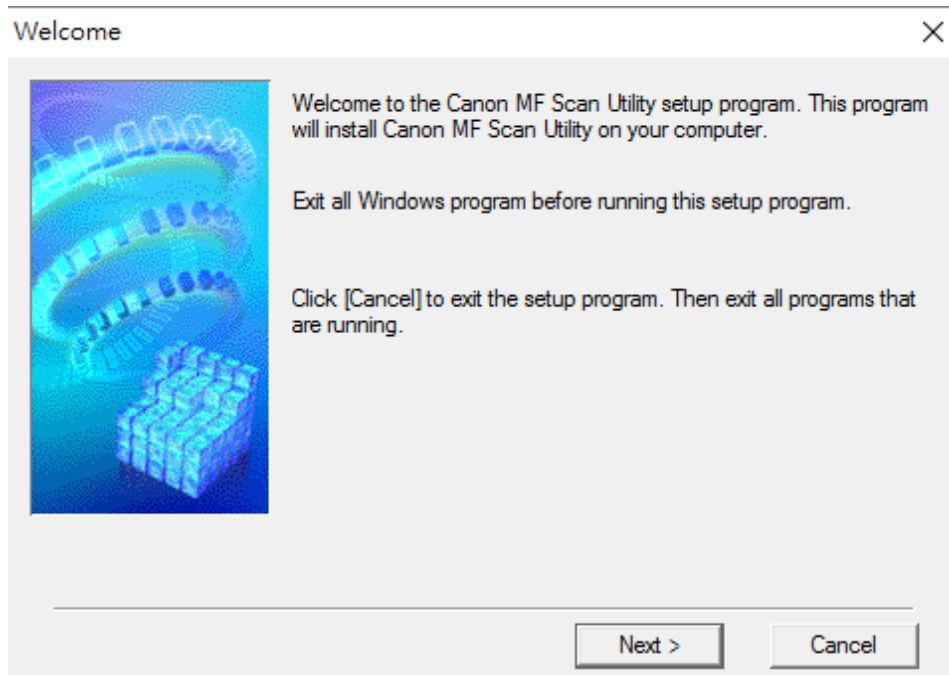


安裝掃描軟件MF Scan Utility

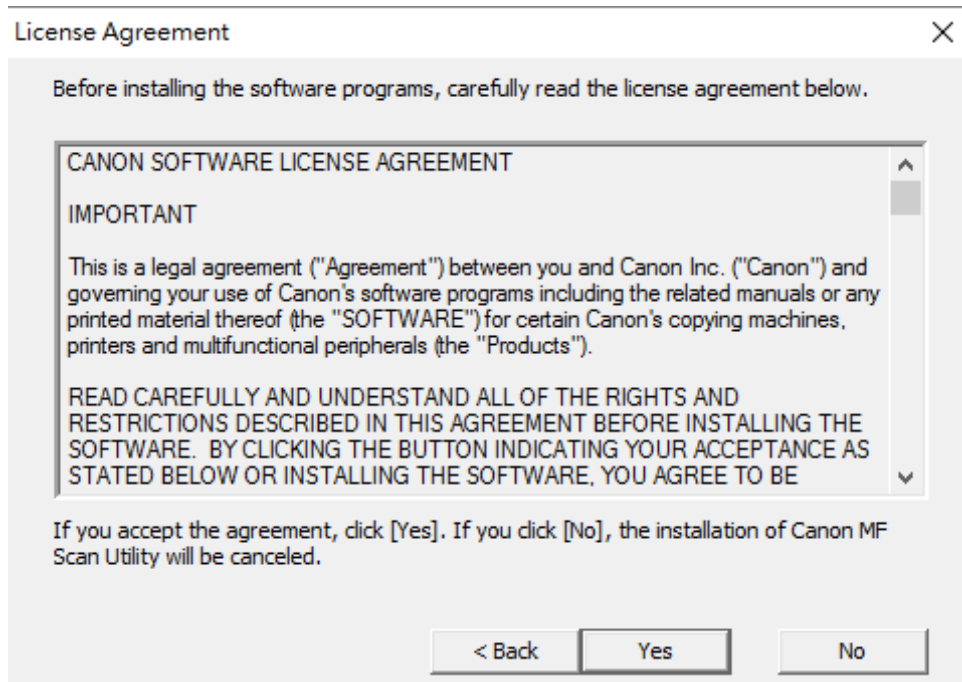
MF Scan Utility installation procedure

23. 執行檔案〔 MFScanUtility_*****_EN.exe 〕按「Next」

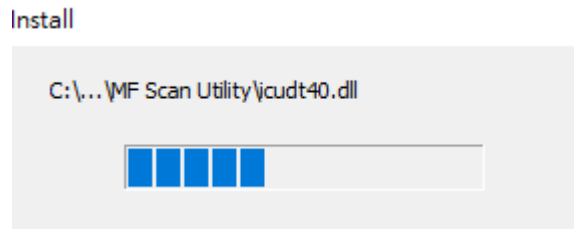
Run the file [MFScanUtility_*****_EN.exe] , click “Next”



24. 按「Yes」
Click "Yes"

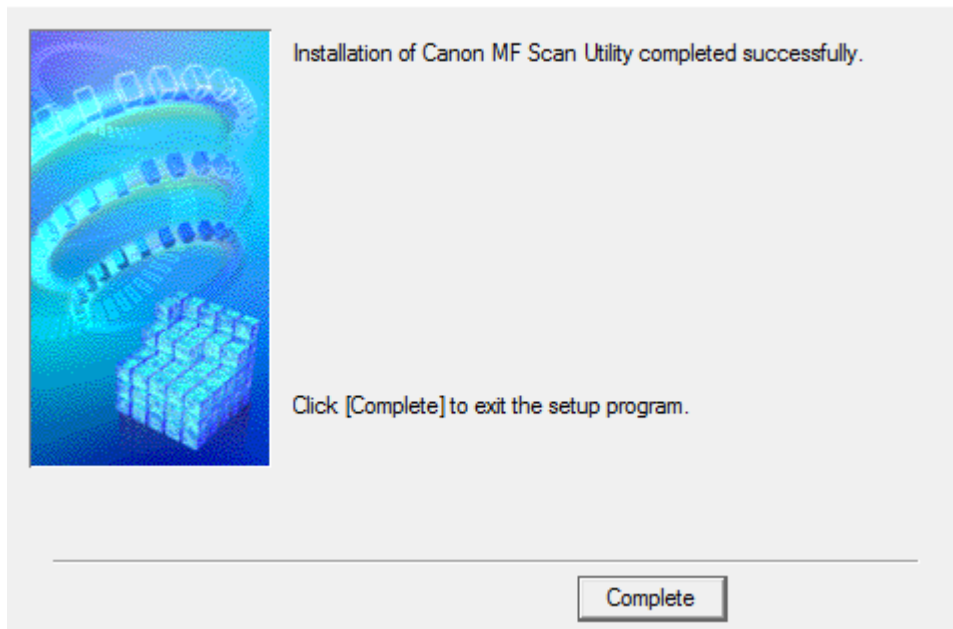


25. 等待安裝程序完成
Waiting for the installation progress



26. 按「Complete」完成安裝
Click “Complete” to finish installation

Installation Complete



-完-
-End-