

在 Mac OS 以 Wi-Fi 連接安裝 TS8370 驅動程式步驟
TS8370 printer driver Installation Guide for Mac OS via Wi-Fi

***請開啟打印機並確保電腦已連接互聯網**

***Please turn on the printer and make sure computer already connected to the internet**

連接印表機至無線網路路由器

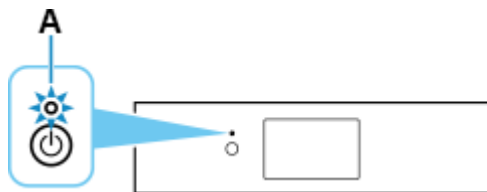
Connect printer to Wi-Fi router

1. 確保在開始無線連接設定之前，印表機已開啟。

如果電源開啟，**電源(ON)**指示燈(A)將亮起。

Make sure printer is turned on before starting wireless connection setup.

If the power is on, the ON lamp (A) will be lit.

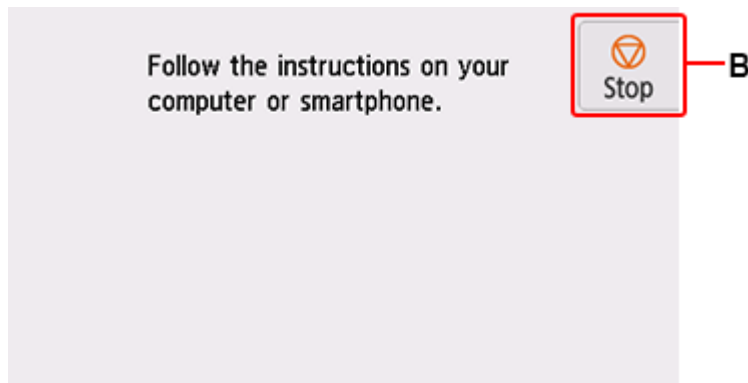


2. 如果顯示以下螢幕，請點選**停止(Stop)**(B)。



如果未顯示以下螢幕，請繼續執行下一步。

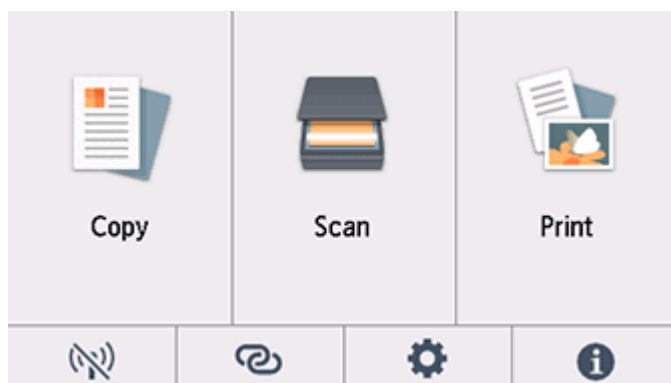
If the screen on the below appears, tap Stop (B).

If the following screen is not displayed, proceed to the next step.



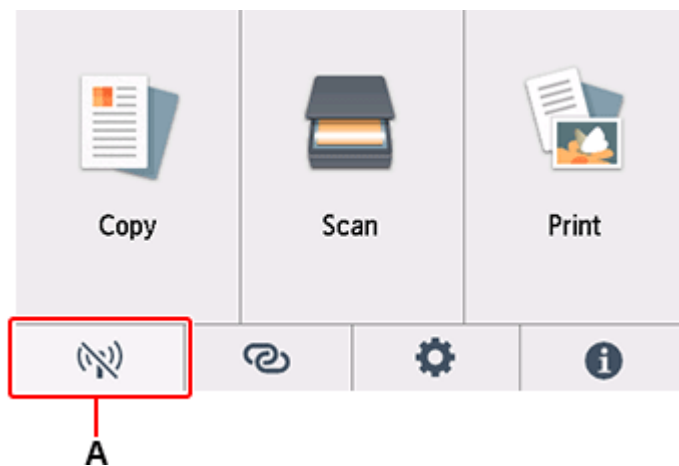
3. 如果螢幕左側顯示 ，請點選 。

If  is displayed on the left side of the screen, tap .



4. 點選  (A)。

Tap  (A).



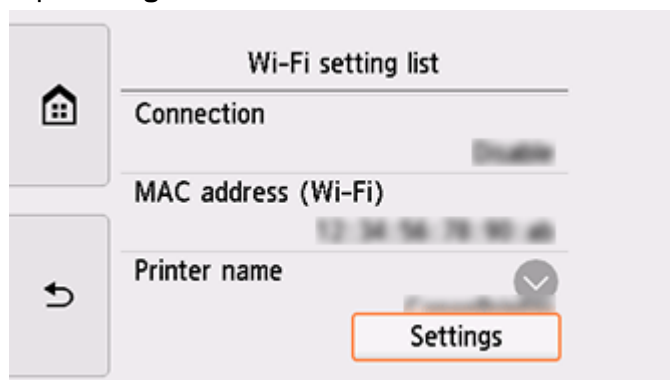
5. 點選 Wi-Fi。

Tap **Wi-Fi**.



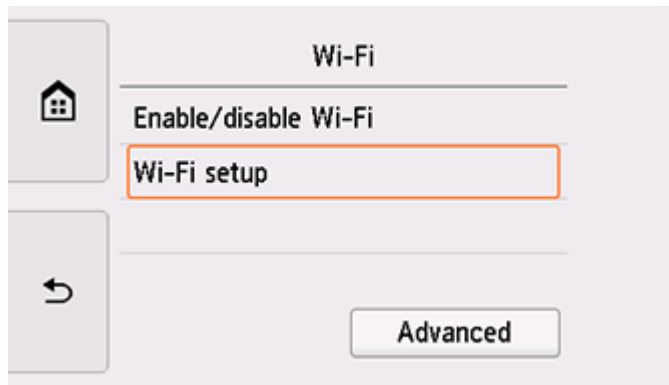
6. 點選設定(Settings)。

Tap **Settings**.



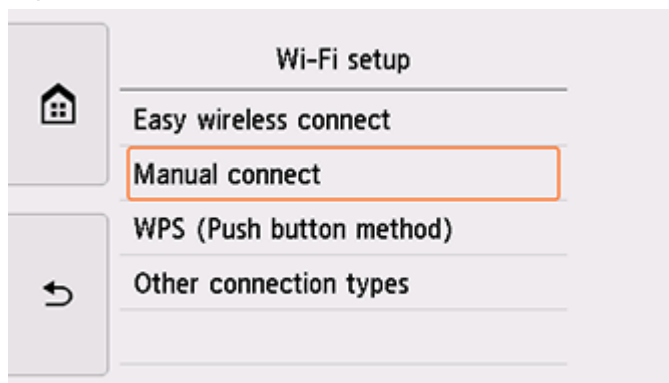
7. 點選 Wi-Fi 設定(Wi-Fi setup)。

Tap **Wi-Fi setup**.



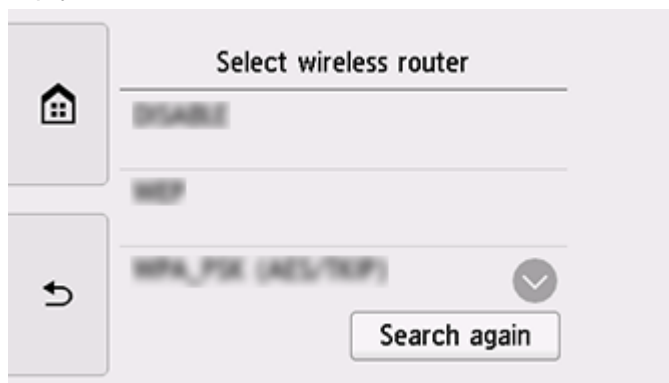
8. 點選手動連接(Manual connect)。

Tap **Manual connect**.



9. 點選所用無線路由器。

Tap your wireless router.



如果出現其他螢幕，請參見「[疑難排解](#)」。

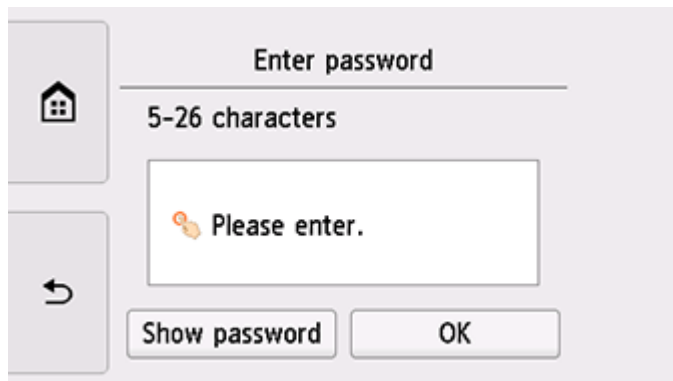
If a different screen appears or no wireless router is found, see "[Troubleshooting](#)."

10. 將顯示以下螢幕之一。

如果出現「已連接到無線路由器。(Connected to the wireless router.)」，則網路不需要密碼。從步驟 15 繼續。

One of the screens below will appear.

If "**Connected to the wireless router.**" appears, the network does not require a password. Continue from step 15.



11. 點選輸入區域。

Tap the input area.

12. 輸入密碼。文字輸入區分大小寫。

關於如何輸入字元和如何變更字元類型，請參見「[文字輸入](#)」(在新視窗中顯示)。

Enter the password. Text entry is case-sensitive.

For how to enter characters and how to change the character type, see "[Text Entry](#)" (appears in a new window).



如果不知道所用無線路由器的密碼，請參見無線路由器手冊或聯絡其製造商。

If you don't know the password for your wireless router, see the wireless router manual or contact its manufacturer.

13. 點選 **OK**。

Tap **OK**.



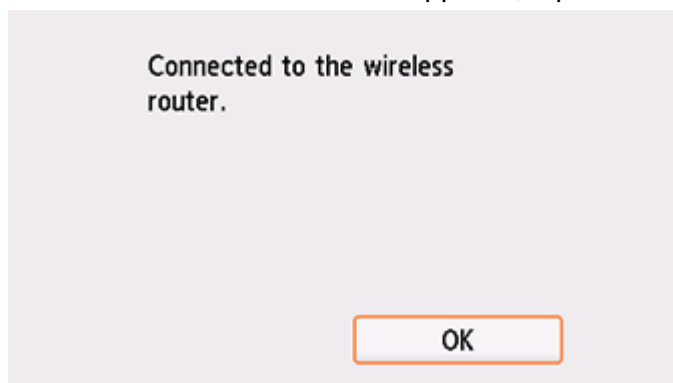
14. 點選 **OK**。

Tap **OK**.





15. 顯示以下螢幕時，請點選 **OK**。

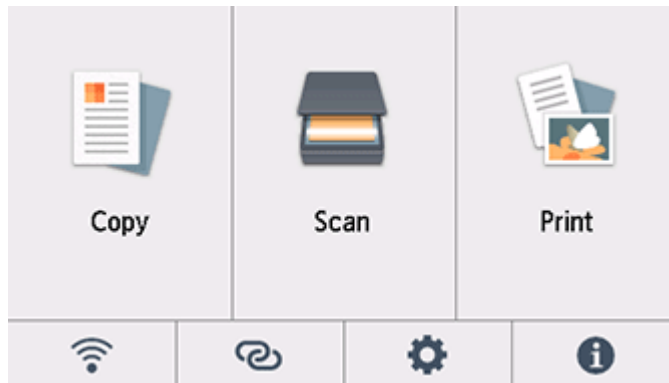
When the screen on the below appears, tap **OK**.



如果出現其他螢幕，請參見「[疑難排解](#)」。

16. 點選螢幕左側的 。

Tap  on the left side of the screen.



網路連接設定完成。

連接完成後， 會出現在螢幕左下方。

如果使用軟體執行設定，請返回軟體繼續進行安裝。

The network connection setup is now complete.

When connection is complete,  appears at the bottom left of the screen.

If performing setup with software, return to the software and proceed with the installation.

Mac安裝步驟

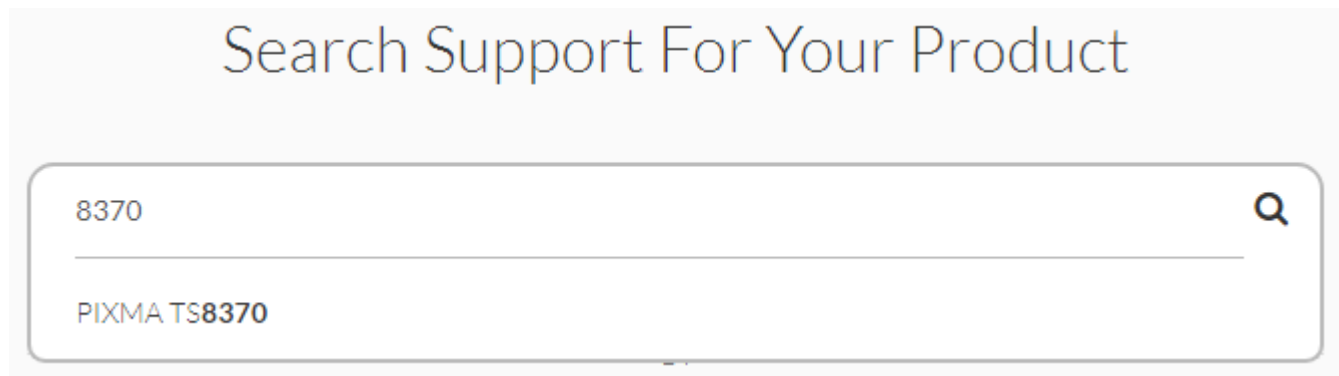
Mac installation procedure

安裝掃描軟件IJ Scan Utility Lite

IJ Scan Utility Lite installation procedure

1. 到佳能網站 <https://hk.canon/en/support>，選擇相關的印表機型號及下載印表機的驅動程式

Go to: <https://hk.canon/en/support>, select related printer model, then download the printer driver



2. 選擇並下載以下檔案

Choose and download below files:

- 驅動程式 / Driver

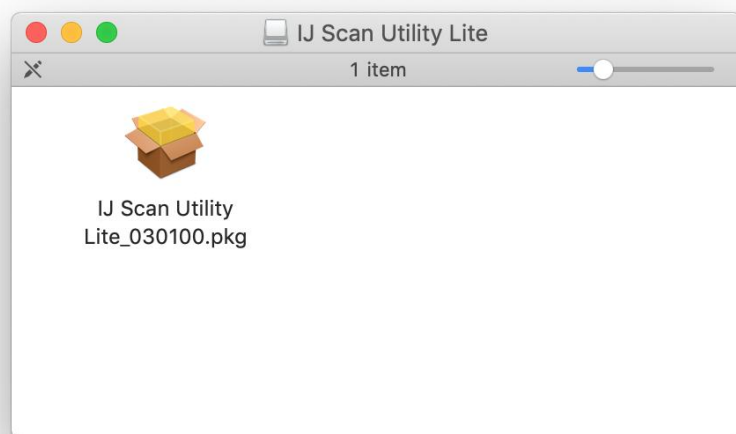
IJ Scan Utility Lite Ver.x.x.0 (Mac)

3. 按一下“Download”，下載完成後開啟該檔案安裝

Click “Download”, and open the file after download completed

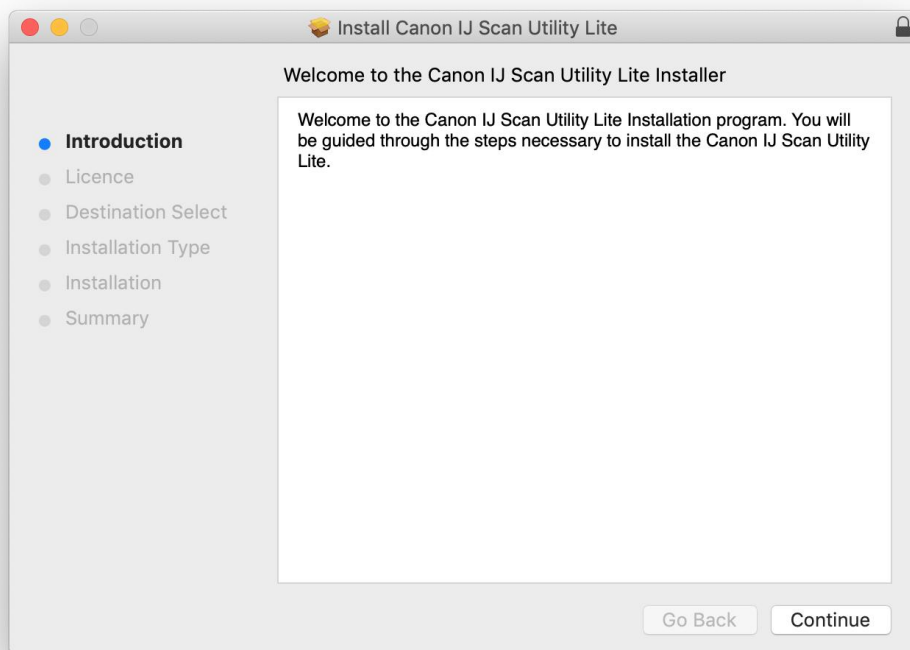
4. 下載完成後開啟該檔案，按「IJ Scan Utility Lite_xxxxxx.pkg」

Open file after download finished, press “IJ Scan Utility Lite_xxxxxx.pkg”



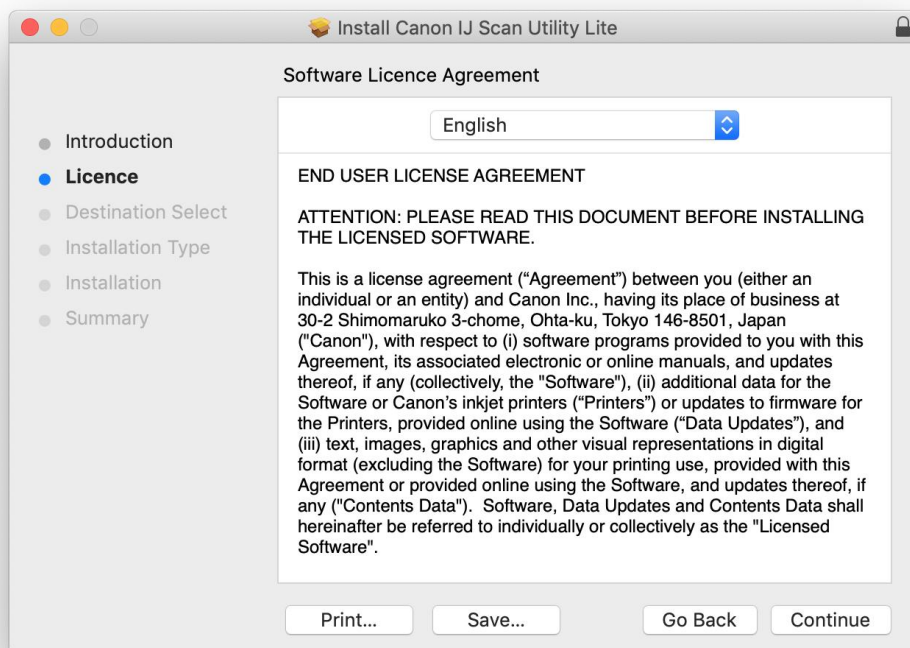
5. 按“繼續”

Click “Continues”



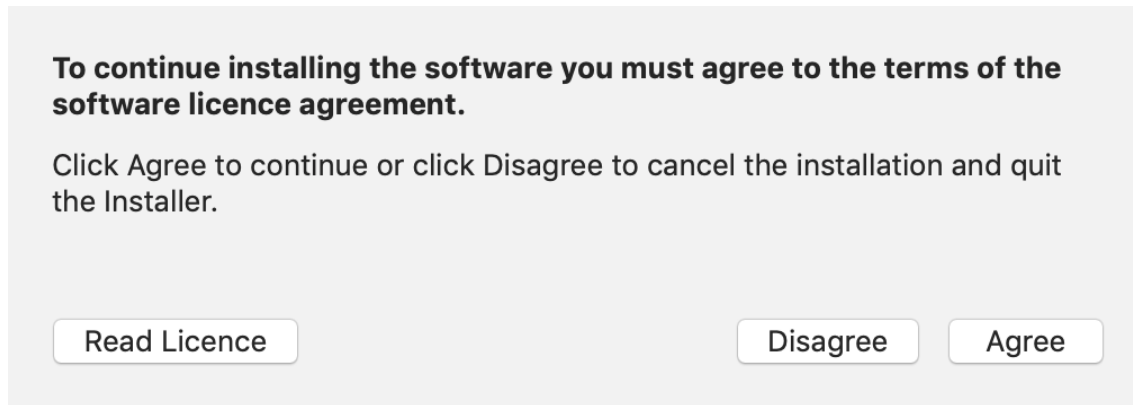
6. 按“繼續”

Click “Continues”



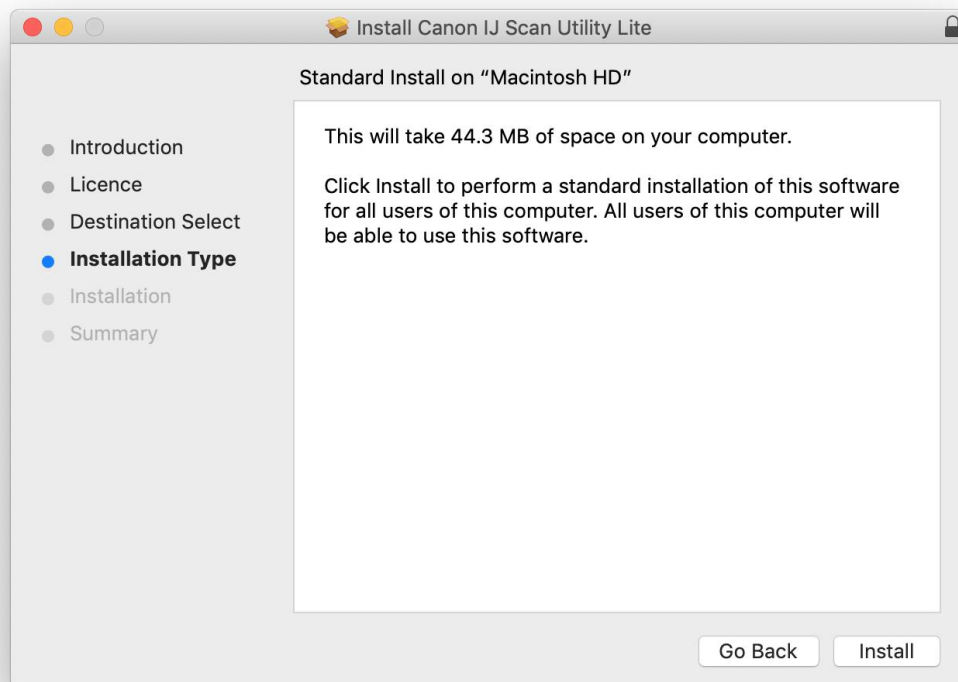
7. 按“同意”

Click “Agree”



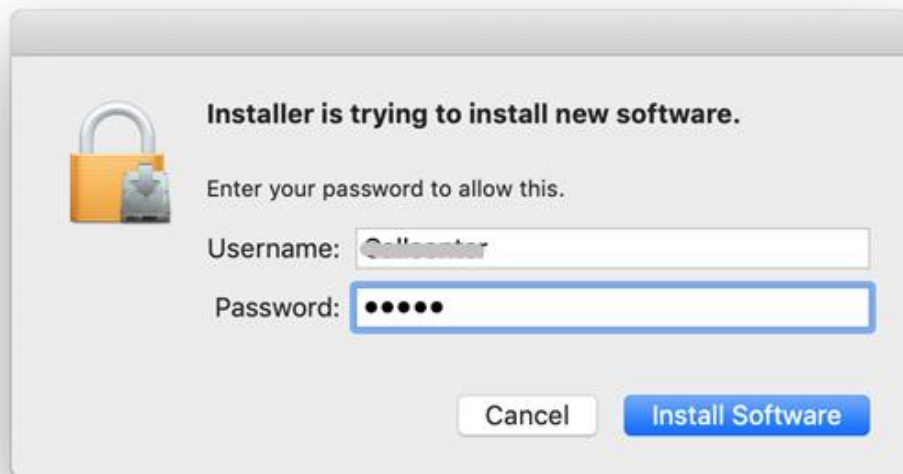
8. 按“安裝”

Click “Install”



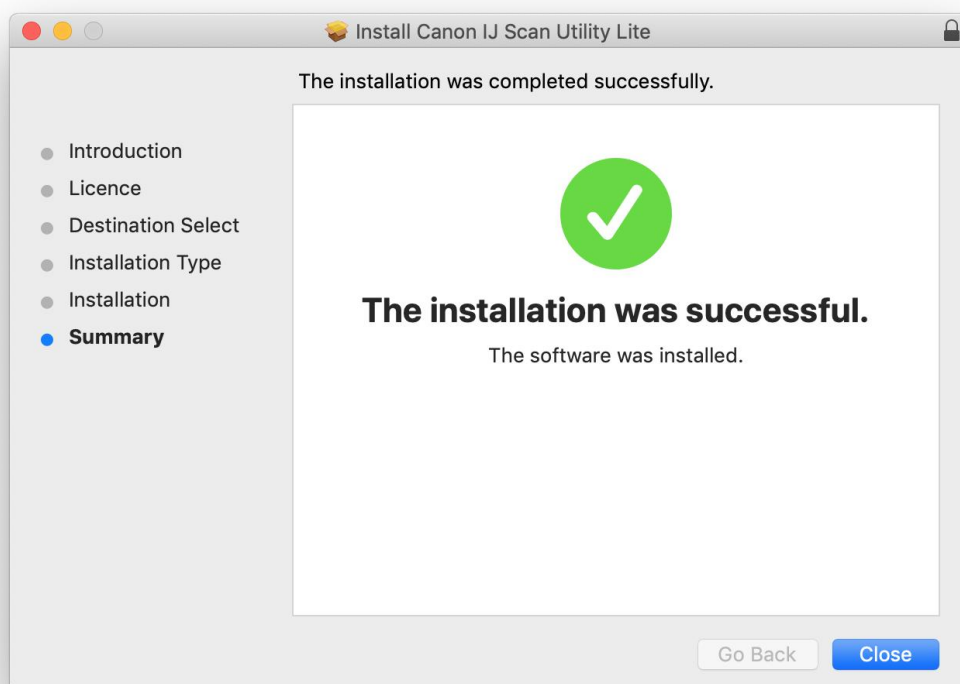
9. 如出現以下畫面，請輸入「登入名稱」和「密碼」

If the following screen appears, please enter the “Username” and “Password”



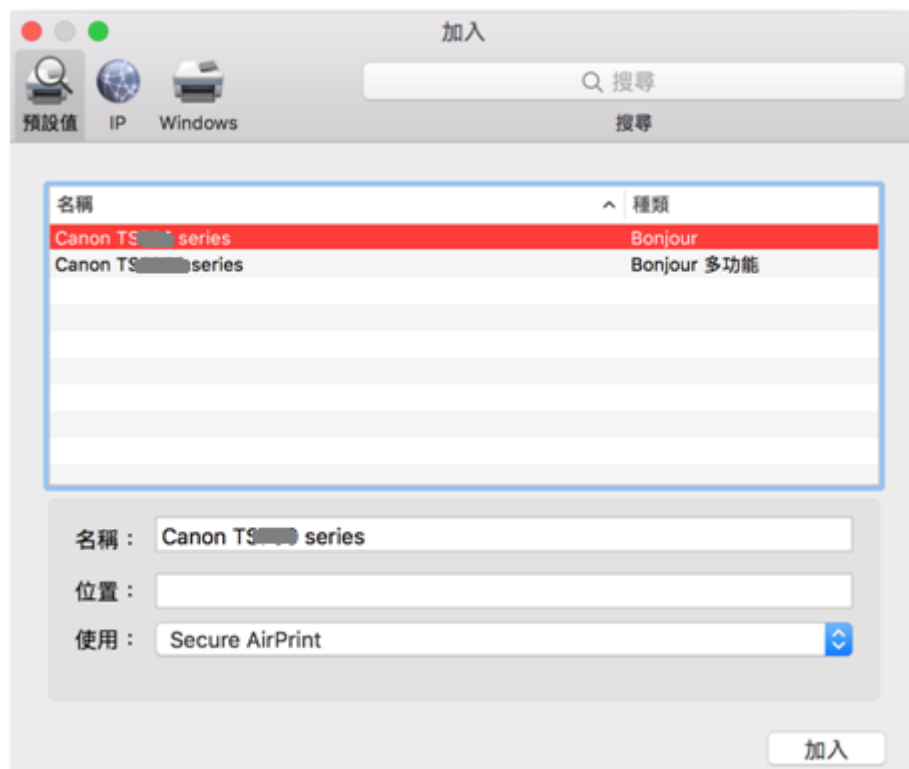
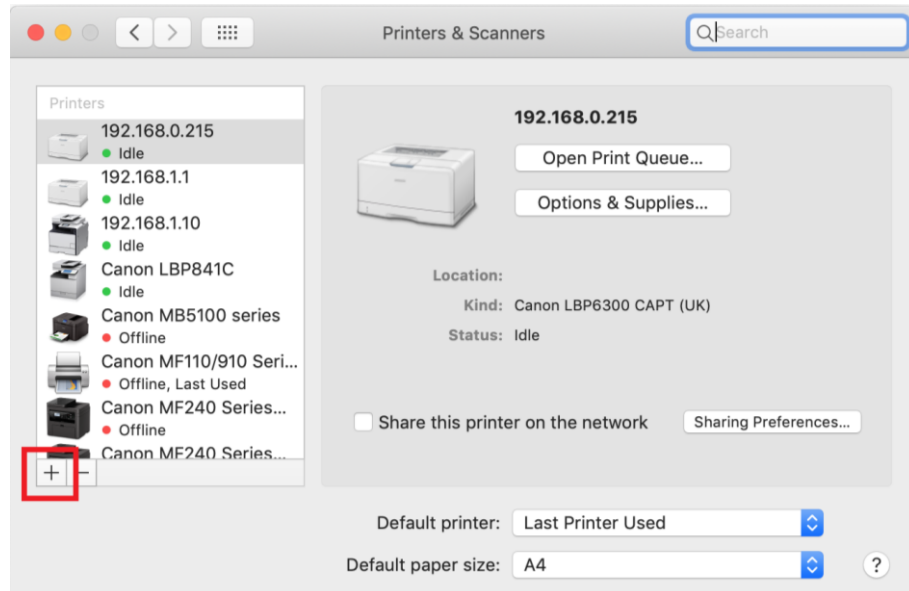
10. 掃描程式安裝完成，按“關閉”

Software installation is completed. click “Close”



在Mac電腦上，點選左上角的蘋果圖示，選擇**系統偏好設定**>**印表機與掃描器**，再點選左下角的「+」進入下圖的新增印表機視窗。選擇印表機「**Canon TS8300 Series**」(種類為**Bonjour**多功能)，確定「使用」為「**Secure AirPrint**」，然後按「加入」

On the Mac system, click the Apple icon on the top left corner, then choose “**System Preferences**” > “**Printers and Scanners**”. Click the “+” icon on the bottom left corner, then choose name as “Canon TS8300 series” (Kind: Bonjour Multifunction), and make sure “Secure AirPrint” in “Use” column , and then click “Add”



-完-

-End-