

在 Mac OS 以 Wi-Fi 連接安裝 TS6370 驅動程式步驟

TS6370 printer driver Installation Guide for Mac OS via Wi-Fi

***請開啟打印機並確保電腦已連接互聯網**

***Please turn on the printer and make sure computer already connected to the internet**

請參考以下簡易無線連接或手動連接方法設定印表機的無線功能

Please refer to following Easy wireless connect or Manual connect method to setup the Wi-Fi of printer

簡易無線連接

Easy wireless connect

1. 在智慧型手機或平板電腦安裝 **Canon PRINT Inkjet/SELPHY**

Install **Canon PRINT Inkjet/SELPHY** on smartphone or table

Android:

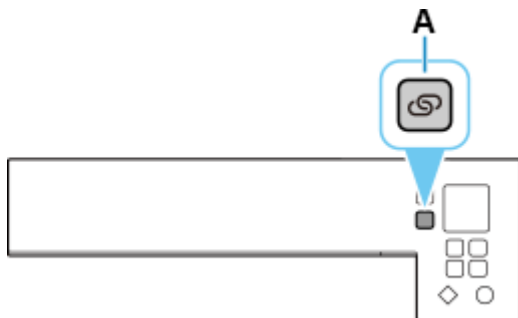
<https://play.google.com/store/apps/details?id=jp.co.canon.bsd.ad.pixmapprint>

iOS:

<https://apps.apple.com/us/app/pixma-printing-solutions/id664425773>

2. 按住**無線連接(Wireless connect)**按鈕(A)約 3 秒鐘。

Press and hold the **Wireless connect** button (A) for about three seconds.



3. 印表機準備工作完成時，顯示以下螢幕。

When the printer preparation is complete, the screen below appears.

Follow the
instructions on your
computer or
smartphone.

4. 按照智慧型手機或平板電腦上的說明進行操作。

Follow instructions on your smartphone or tablet.

[按此參考詳細操作步驟](#)

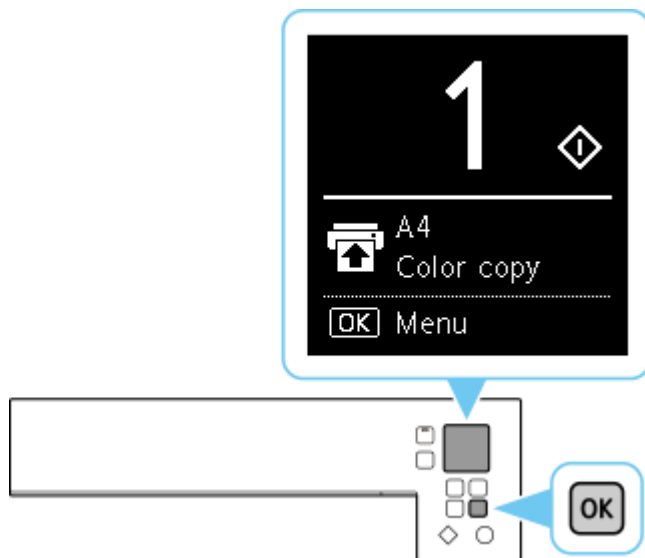
[Click here for detail instructions](#)

手動連接方法

Manual connect

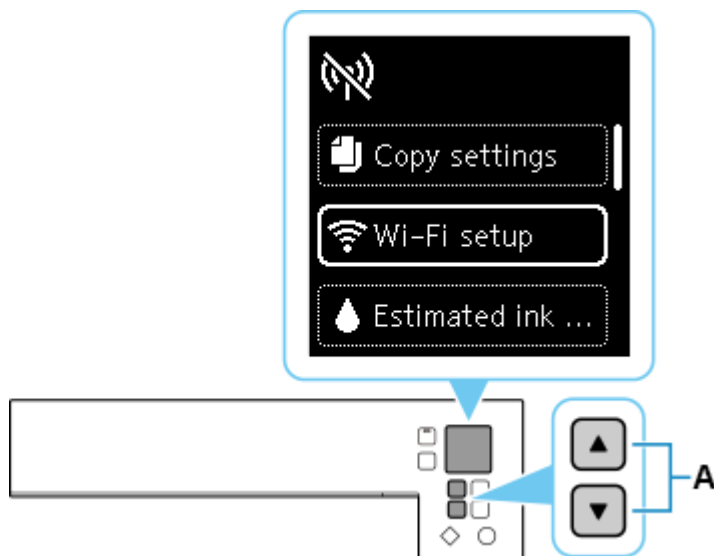
1. 按 **OK** 按鈕。

Press the **OK** button



2. 使用 ▲或 ▼ 按鈕(A)選擇 **Wi-Fi 設定**，然後按 **OK** 按鈕。

Use the ▲ or ▼ button (A) to select **Wi-Fi setup** and press the **OK** button.



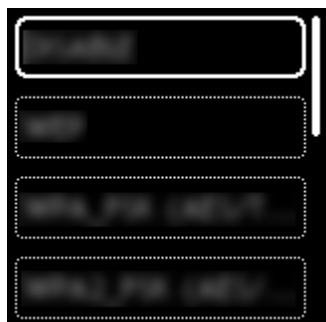
3. 選擇**手動連接**並按 **OK** 按鈕。

Select **Manual connect** and press the **OK** button.



4. 選擇無線路由器並按 **OK** 按鈕。

Select your wireless router and press the **OK** button.



如果出現其他螢幕或未找到無線路由器，請參見「[疑難排解](#)」。

If a different screen appears or no wireless router is found, see "[Troubleshooting](#)."

5. 輸入密碼。文字輸入區分大小寫。

關於如何輸入字元和如何變更字元類型，請參見「[文字輸入](#)」(在新視窗中顯示)。

Enter the password. Text entry is case-sensitive.

For how to enter characters and how to change the character type, see "[Text Entry](#)" (appears in a new window).



如果不知道所用無線路由器的密碼，請參見無線路由器手冊或聯絡其製造商。

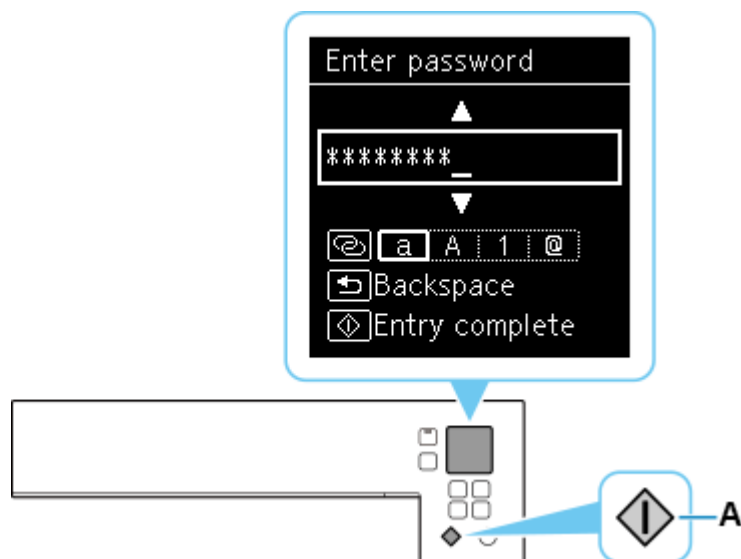
如果出現「**已連接到無線路由器。**」，則網路不需要密碼。從步驟 7 繼續。

If you don't know the password for your wireless router, see the wireless router manual or contact its manufacturer.

If "**Connected to the wireless router.**" appears, the network does not require a password. Continue from step 7.

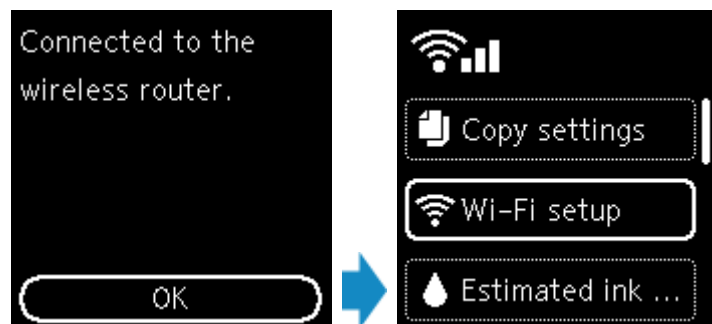
6. 輸入後，按**啟動**按鈕(A)。

After entry, press the **Start** button (A).



7. 顯示下方的螢幕時，請按 **OK** 按鈕。

When the screen on the below appears, press the **OK** button.

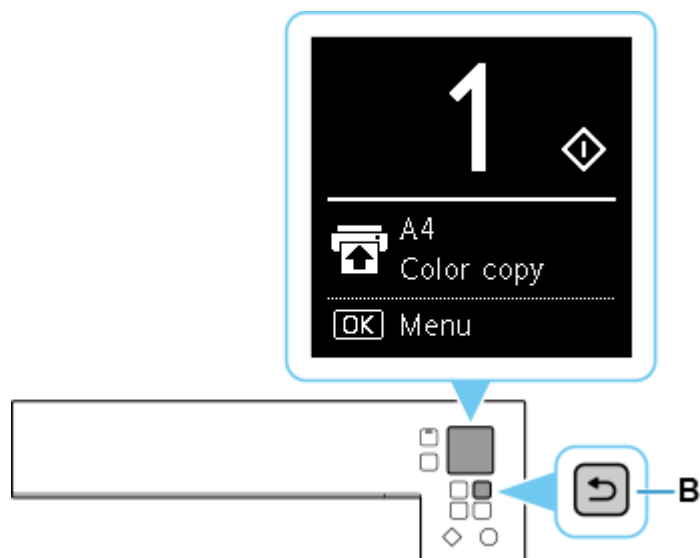


如果出現其他螢幕，請參見「[疑難排解](#)」。

If a different screen appears, see "[Troubleshooting](#)."

8. 按**返回**按鈕(B)。

Press the **Back** button (B).



網路連接設定完成。

The network connection setup is now complete.

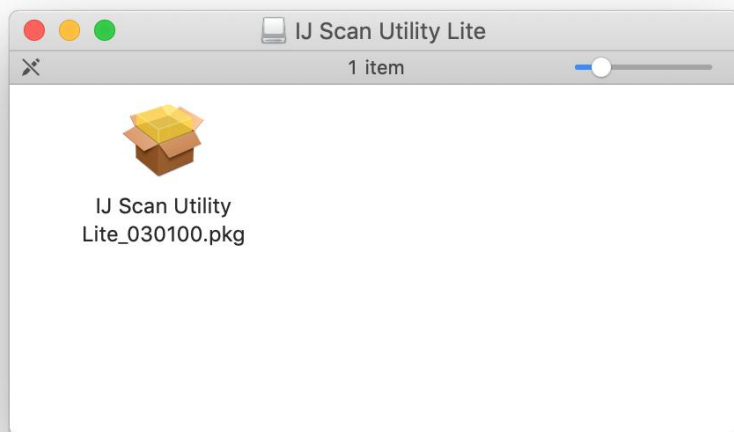
Mac安裝步驟

Mac installation procedure

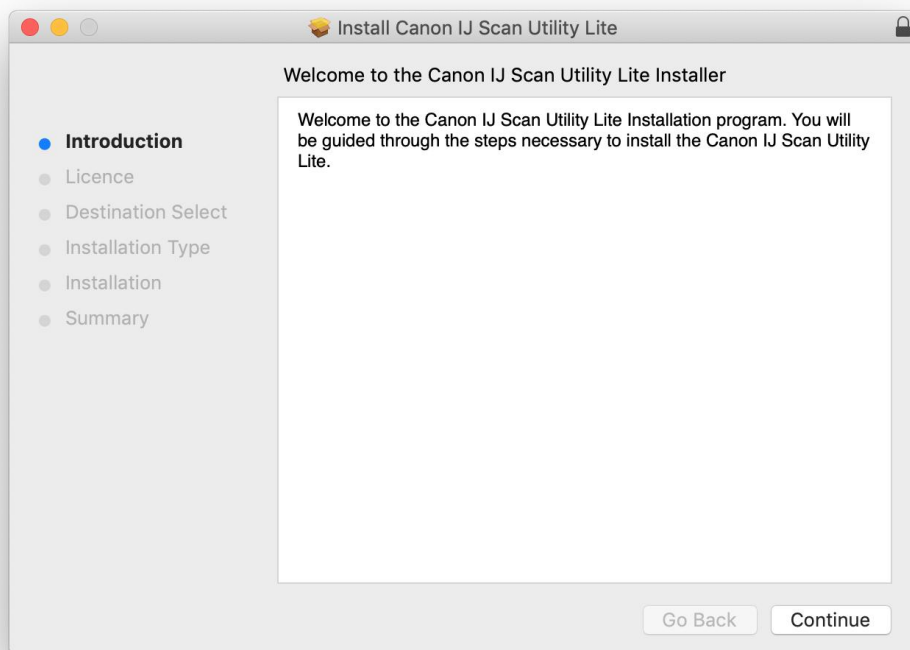
安裝掃描軟件IJ Scan Utility Lite

IJ Scan Utility Lite installation procedure

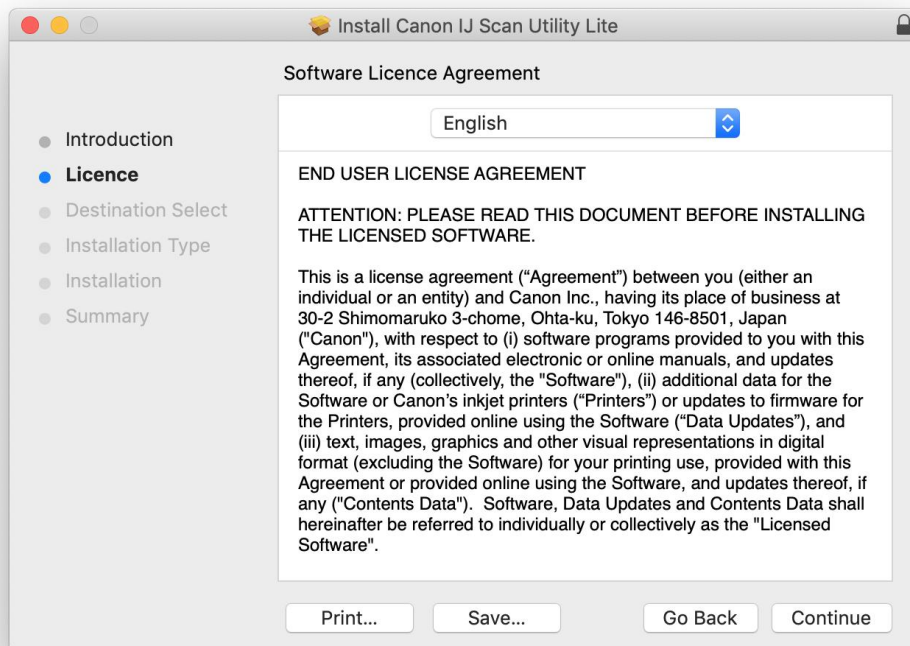
1. 到佳能網站https://hk.canon/zh_HK/support/TS6370/model，下載印表機的軟件
Go to: https://hk.canon/zh_HK/support/TS6370/model, then download the printer software
2. 選擇並下載以下檔案
Choose and download below files:
- 掃描軟件 / Scanning software
IJ Scan Utility Lite Ver.x.x.x (Mac)
3. 按一下“下載”，下載完成後開啟該檔案安裝
Click “Download”, and open the file after download completed
4. 下載完成後開啟該檔案，按「IJ Scan Utility Lite_xxxxxx.pkg」
Open file after download finished, press “IJ Scan Utility Lite_xxxxxx.pkg”



5. 按“繼續”
Click “Continues”

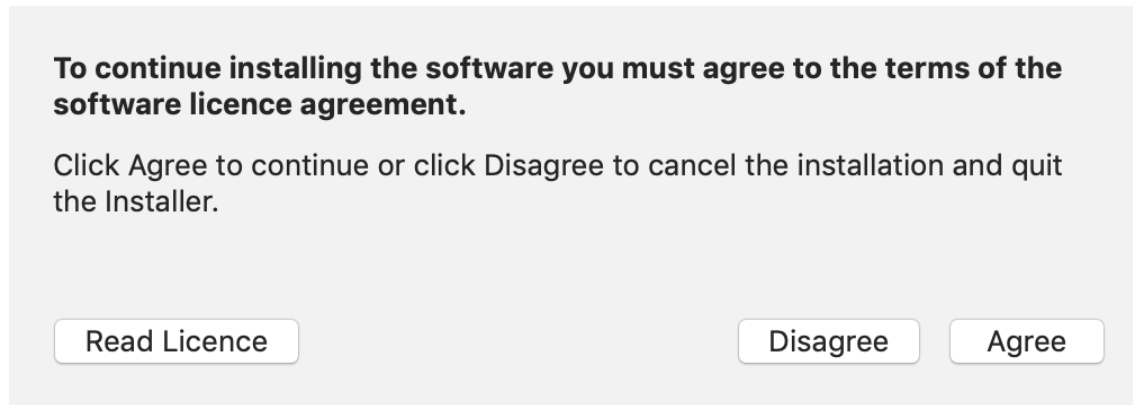


6. 按“繼續”
Click “Continues”



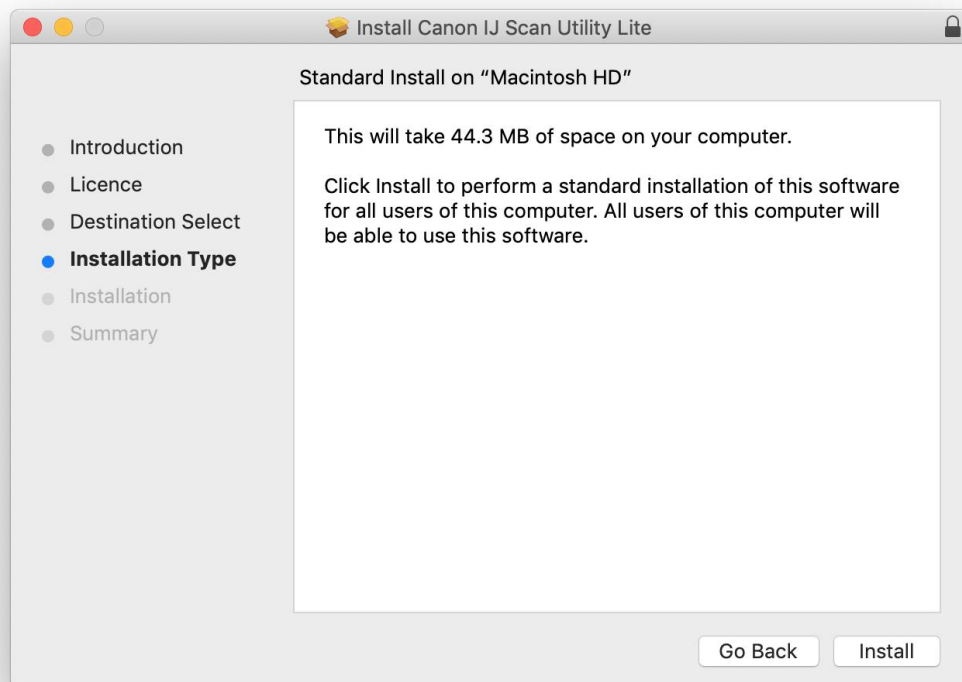
7. 按“同意”

Click “Agree”



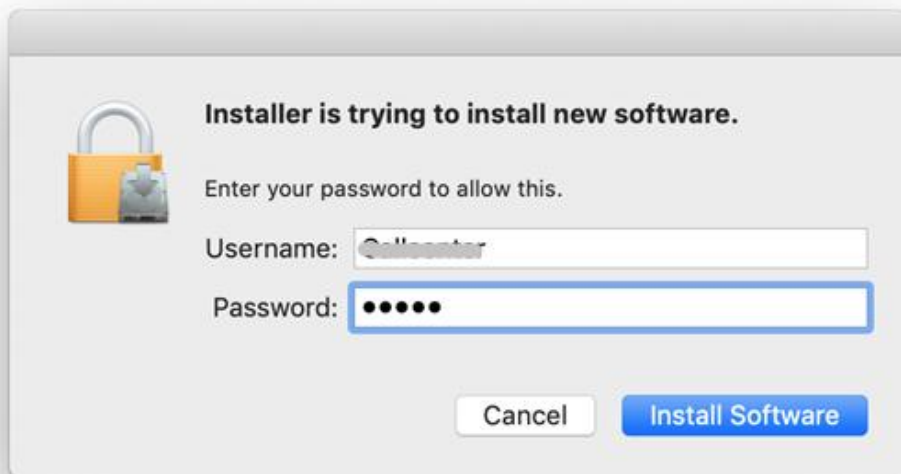
8. 按“安裝”

Click “Install”



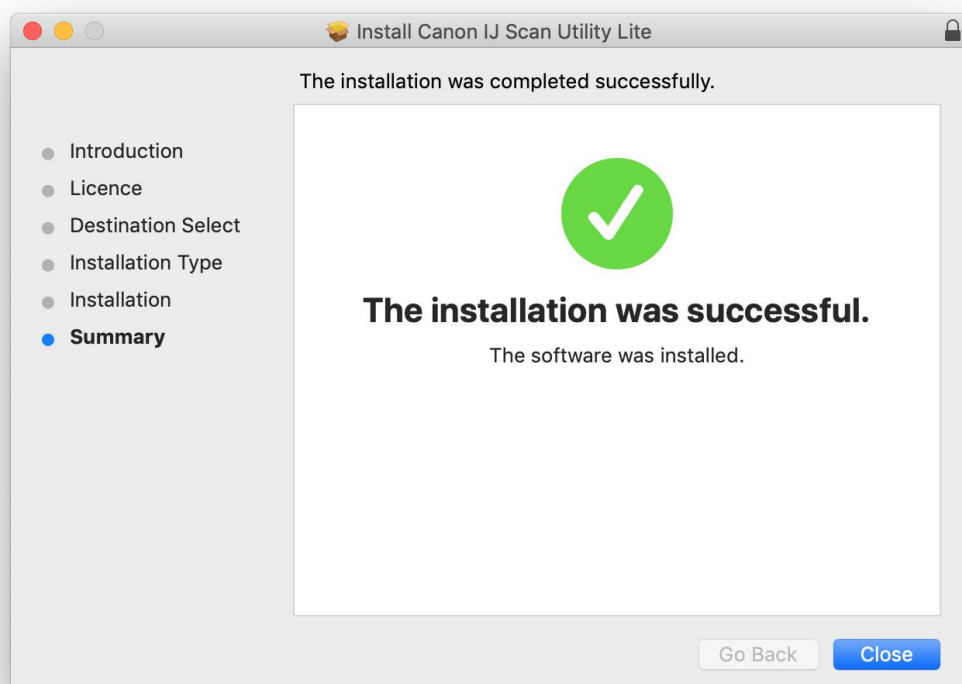
9. 如出現以下畫面，請輸入「登入名稱」和「密碼」

If the following screen appears, please enter the “Username” and “Password”



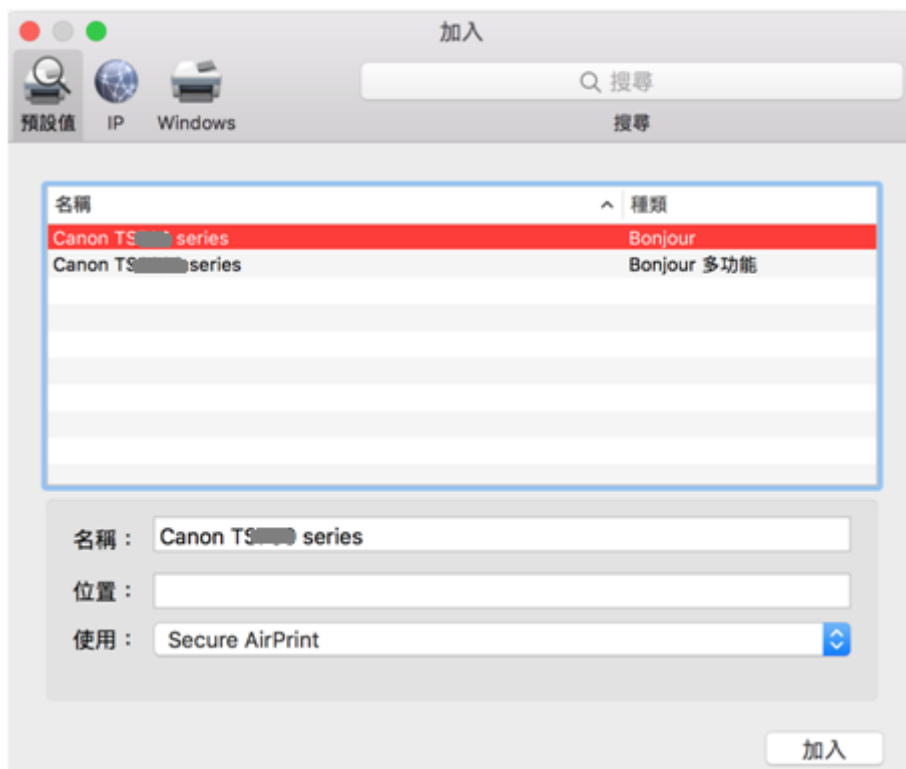
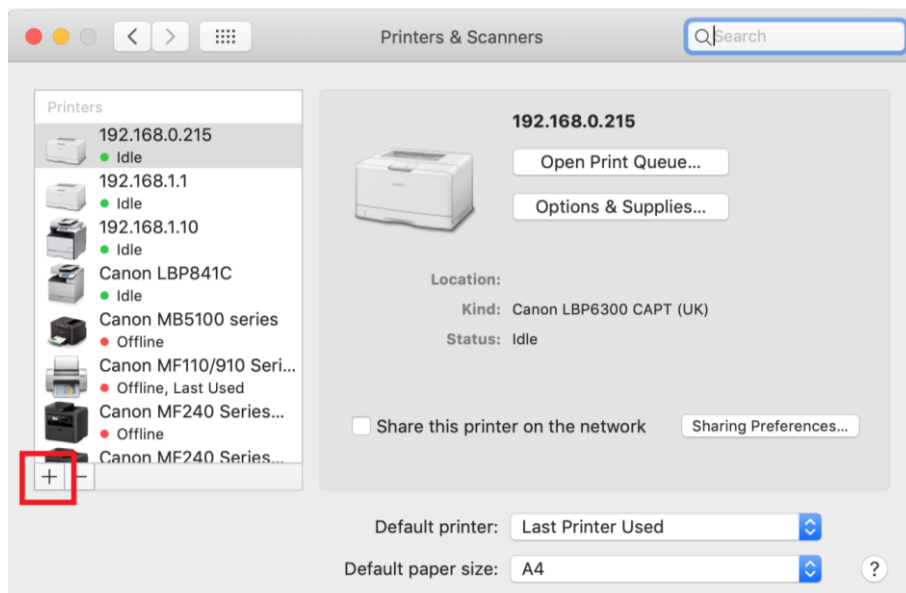
10. 掃描程式安裝完成，按“關閉”

Software installation is completed. click “Close”



11. 在Mac電腦上，點選左上角的蘋果圖示，選擇**系統偏好設定**>**印表機與掃描器**，再點選左下角的「+」進入下圖的新增印表機視窗。選擇印表機「**Canon TS6300 Series**」(種類為**Bonjour**多功能)，確定「使用」為「**Secure AirPrint**」，然後按「加入」

On the Mac system, click the Apple icon on the top left corner, then choose **"System Preferences"** > **"Printers and Scanners"**. Click the **"+"** icon on the bottom left corner, then choose name as "Canon TS6300 series" (Kind: Bonjour Multifunction), and make sure "Secure AirPrint" in "Use" column , and then click "Add"



-完-

-End-