

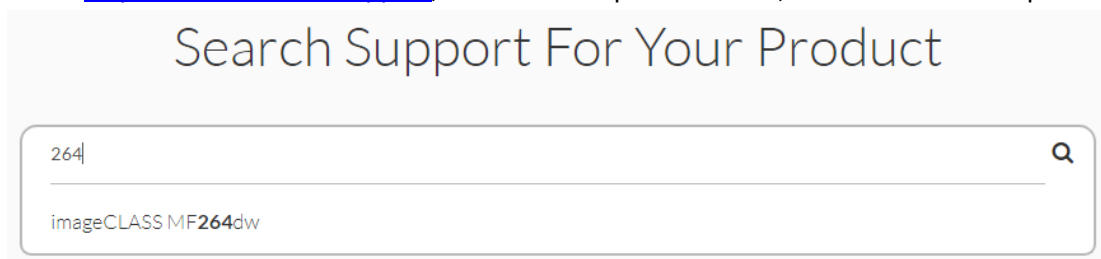
透過 USB 連接安裝 MF264dw 印表機的驅動程式步驟 (以 Win 10 作示範)

MF264dw printer driver Installation Guide for Windows via USB connection (Win 10 as example)

**\*\*注意: 安裝驅動程式前請勿接駁 USB 線，以免系統發生錯誤\*\***

**\*\* Please don't plug the USB cable until the driver asked to do so\*\***

1. 到佳能網站 <https://hk.canon/en/support>，選擇相關的印表機型號及下載印表機的驅動程式  
Go to: <https://hk.canon/en/support>, select related printer model, then download the printer driver



2. 選擇並下載以下檔案

Choose and download below files:

- 打印機驅動程式 / Printer Driver

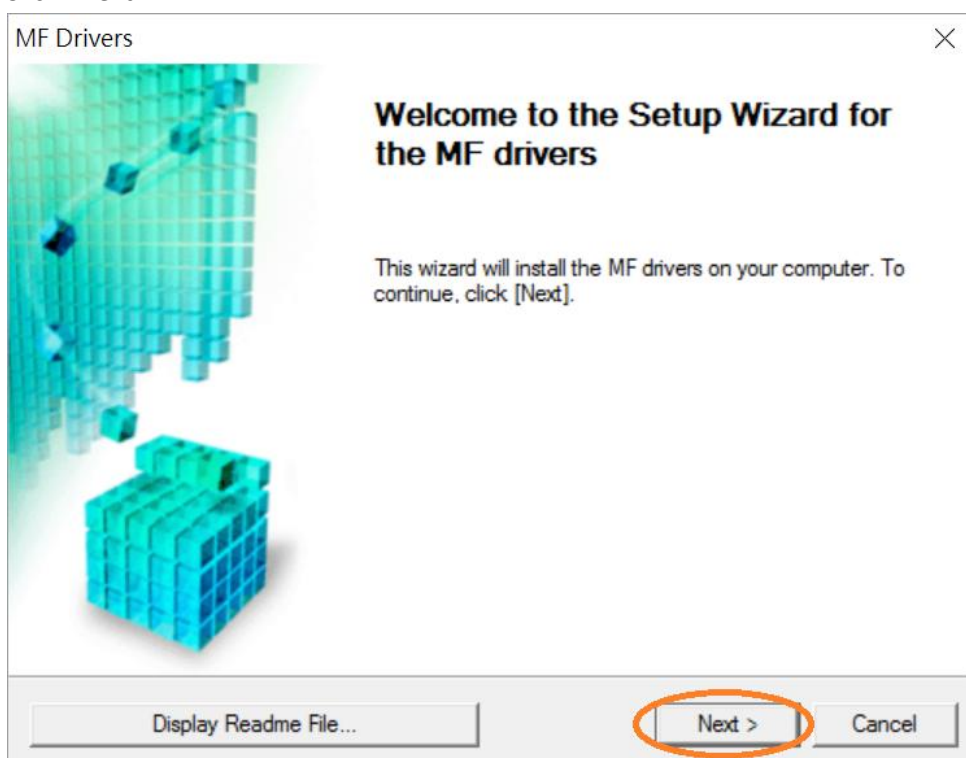
[\[Windows x64bit\] MF269dw/MF267dw/MF266dn/MF264dw/MF261d MFDivers \(UFR II LT / Generic Plus PCL6 / Generic FAX / ScanGear\)](#)

- 掃描程式 / Scanning Software

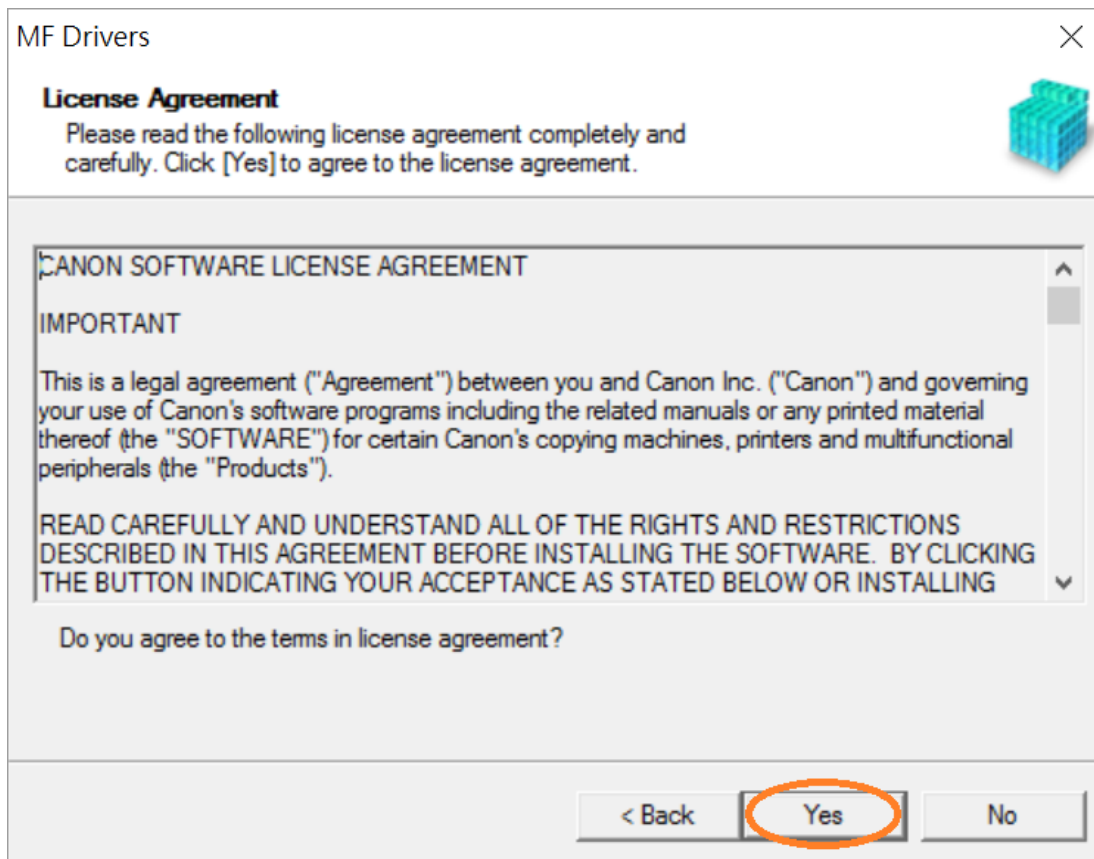
[\[Windows 32bit & 64bit\] MF Scan Utility Ver.1.x.0.0](#)

3. 按「Next >」

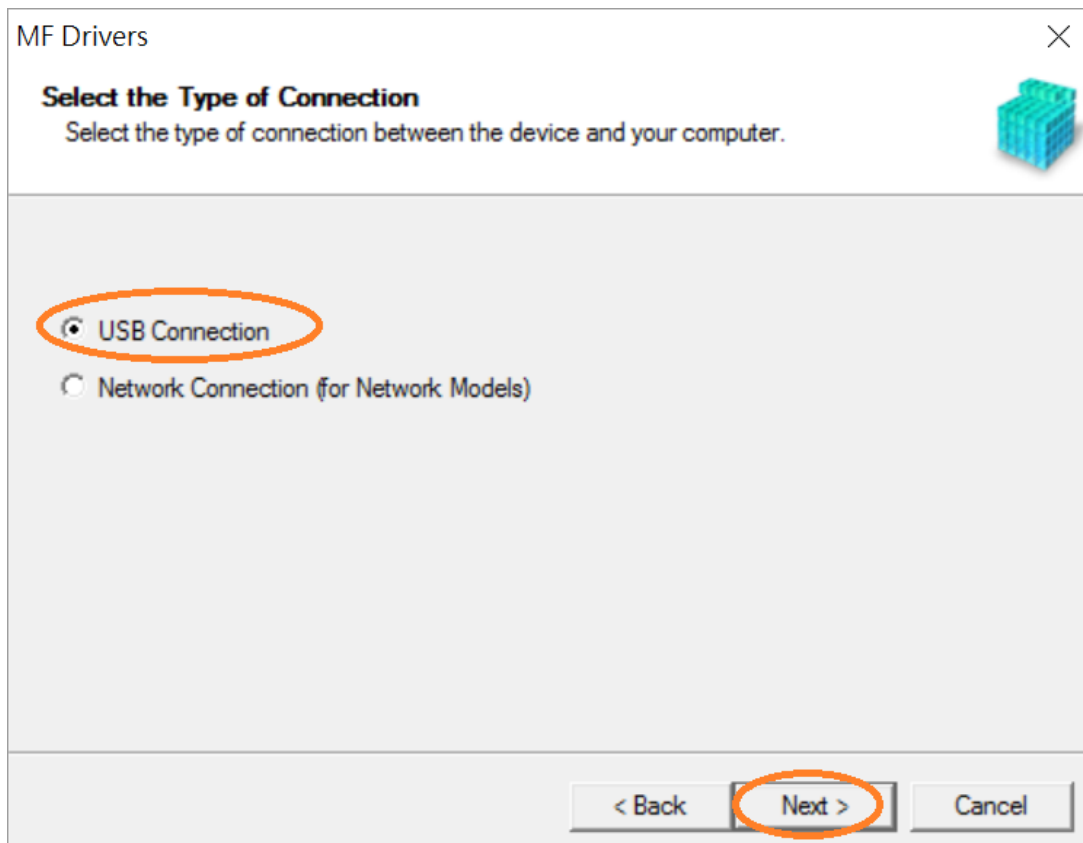
Click "Next >"



4. 按「Yes」  
Click “Yes”

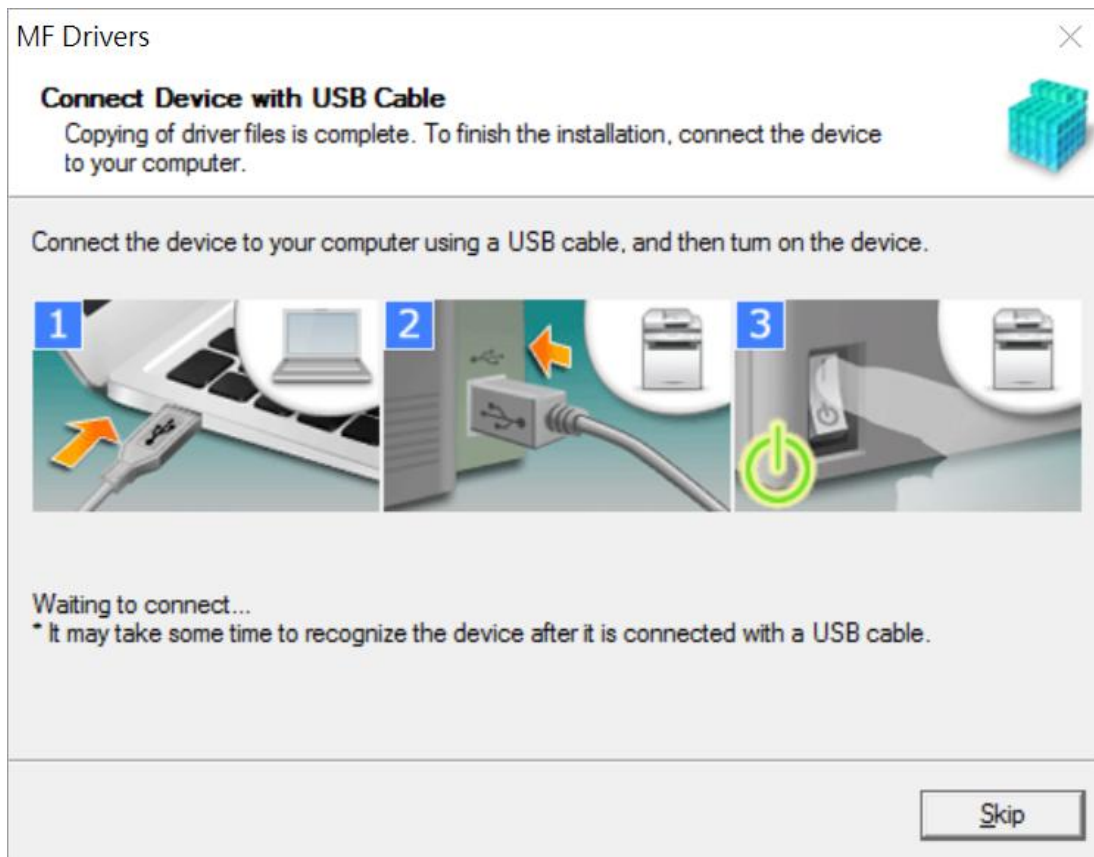


5. 選擇「USB Connection」，按「Next >」  
Select “USB Connection”, click “Next >”



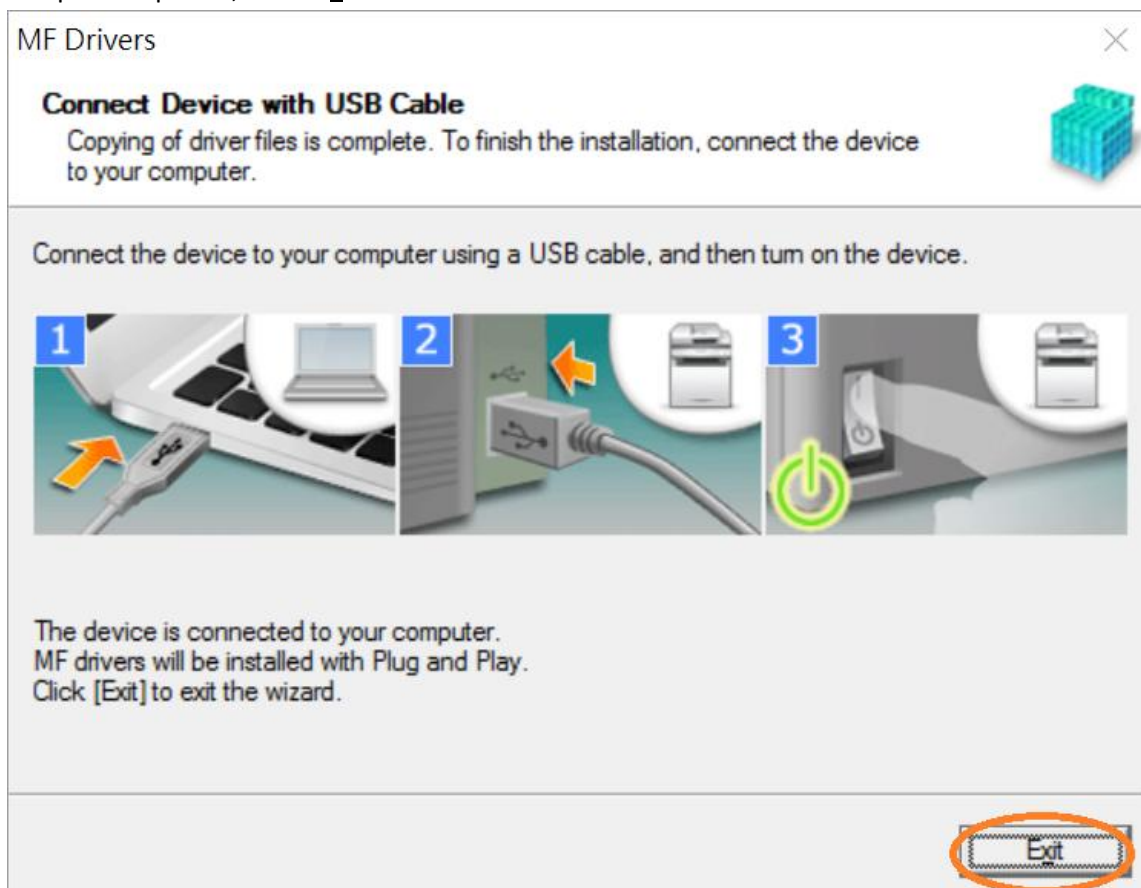
6. 以 USB 線接駁打印機及電腦，然後開啟打印機

Connect printer and computer with the USB cable, and then turn on the printer



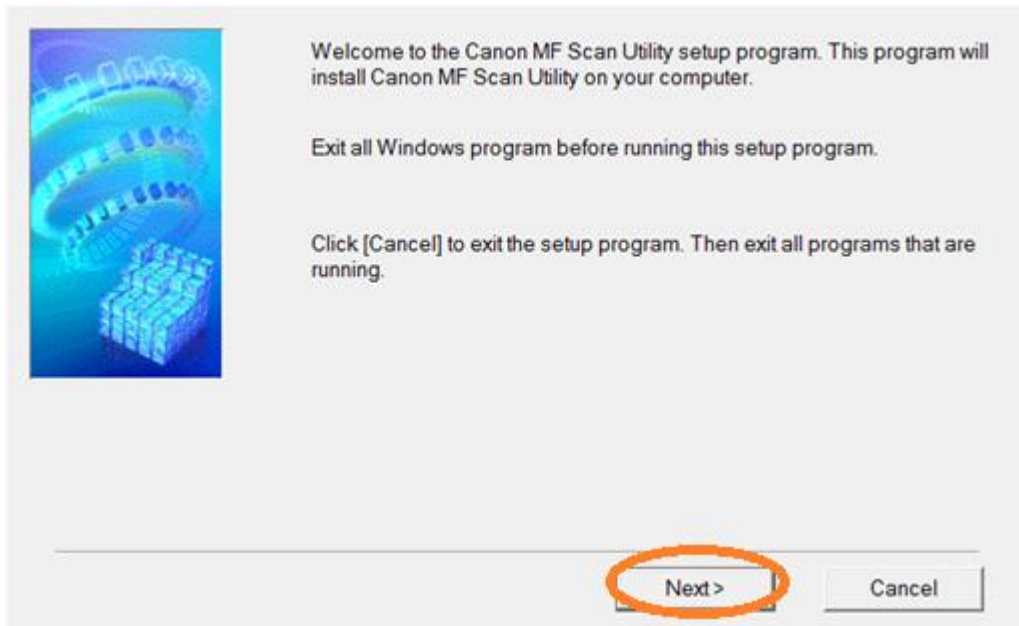
7. 安裝完成，按「Exit」

Setup is completed, click "Exit"

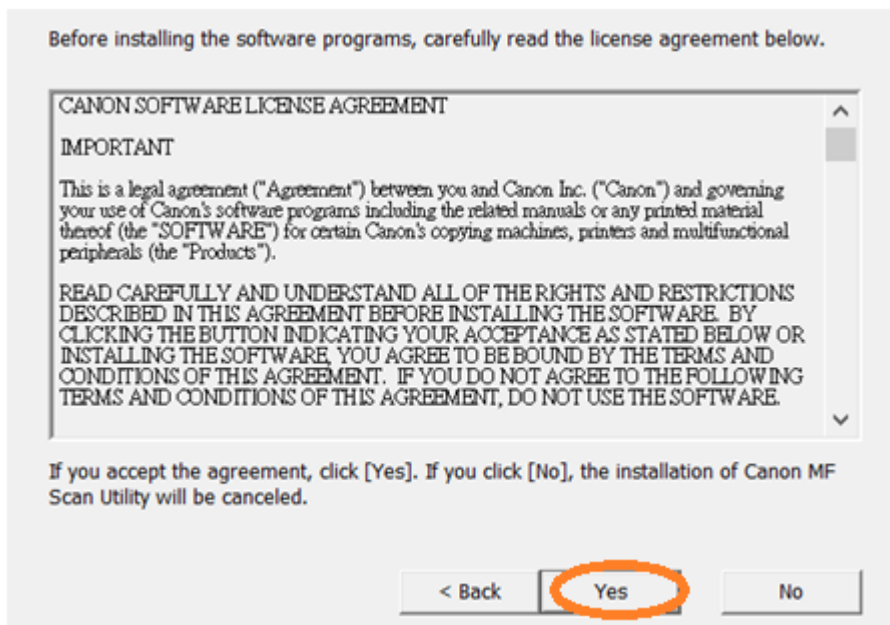


## 安裝掃描軟件MF Scan Utility MF Scan Utility installation procedure

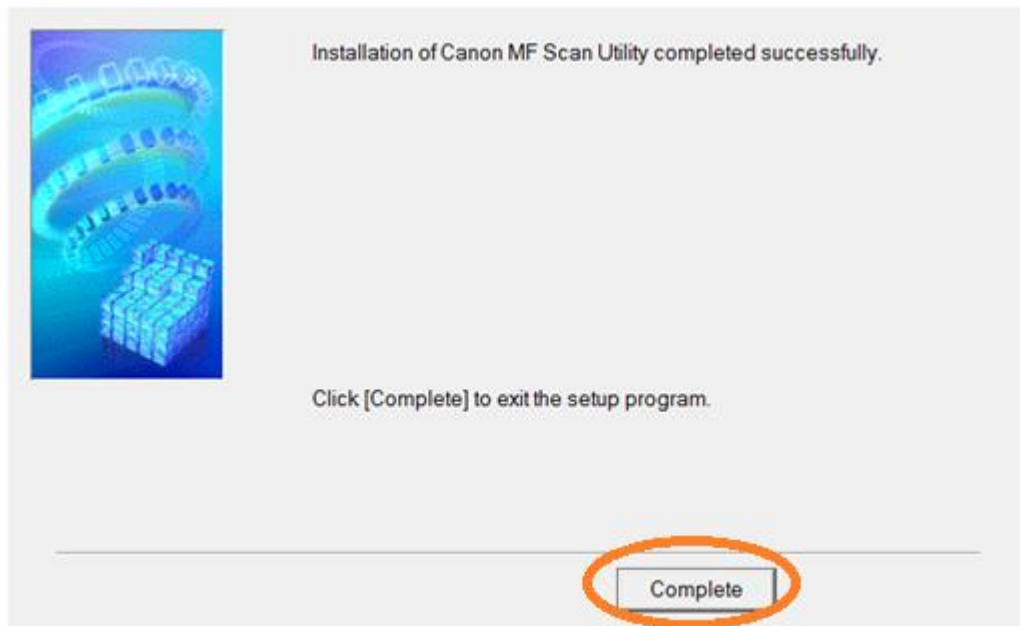
8. 執行檔案〔MFScanUtility\_\*\*\*\*\*\_EN.exe〕按「Next」  
Run the file [MFScanUtility\_\*\*\*\*\*\_EN.exe], click “Next”



9. 按「Yes」  
Click “Yes”



10. 按「Complete」  
Click "Complete"



-完-  
-End-