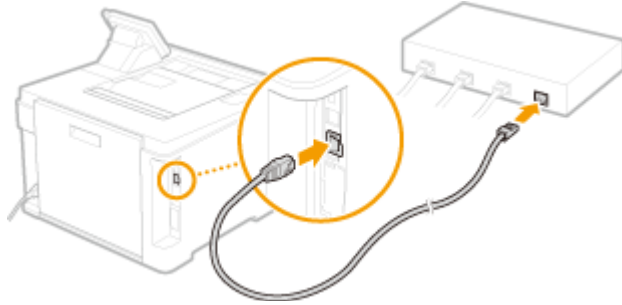


**LBP623Cdw, LBP621Cw 在 Windows 透過 LAN 連線連接印表機之驅動程式步驟**  
**Driver installation procedure for LBP623Cdw, LBP621Cw in Windows (Via LAN)**

使用乙太網絡連接線接駁到印表機及開啟印表機

Connect the machine to a router by using a LAN cable and turn on computer



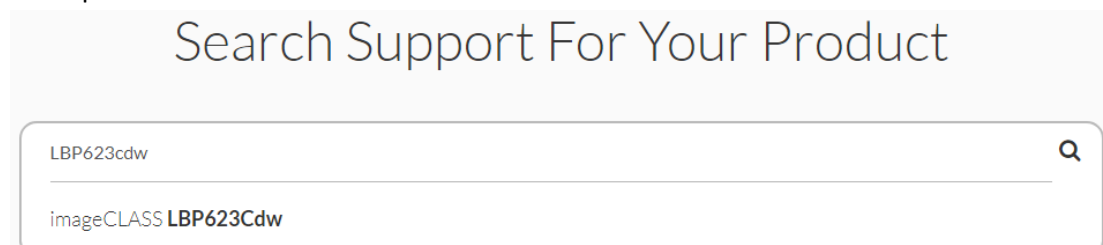
1. 在首頁畫面中選擇 <功能表>  
Select "Menu" in the Home Screen
2. 選擇「參數選擇」  
Select "Preferences"
3. 選擇「網路」  
Select "Network"
- 如果出現登入畫面，請輸入正確的識別碼和 PIN，然後按「登入」  
If the login screen appears, enter the correct ID and PIN, then press "Log In"
4. 選擇「選擇有線/無線區域網路」  
Select "Select Wired/Wireless LAN"
5. 選擇「有線」  
Select "Wired LAN"

## 下載及安裝步驟

### Driver download and Installation procedure

1. 到佳能網站 <https://hk.canon/en/support>，選擇相關的印表機型號及下載印表機的驅動程式

Go to: <https://hk.canon/en/support>, select related printer model, then download the printer driver



2. 選擇並下載以下檔案

Choose and download below file:

- 打印機驅動程式 / Printer Driver

**[Windows x64] Generic Plus UFR II Printer Driver Vx.xx**

3. 下載的文件以自解壓縮檔檔案(.exe 格式)保存在指定的文件夾中，打開文件解壓縮。將在同一文件夾中創建新文件夾。新文件夾的名稱與解壓縮文件的名稱相同，進入新文件夾開啟「Setup.exe」開始安裝

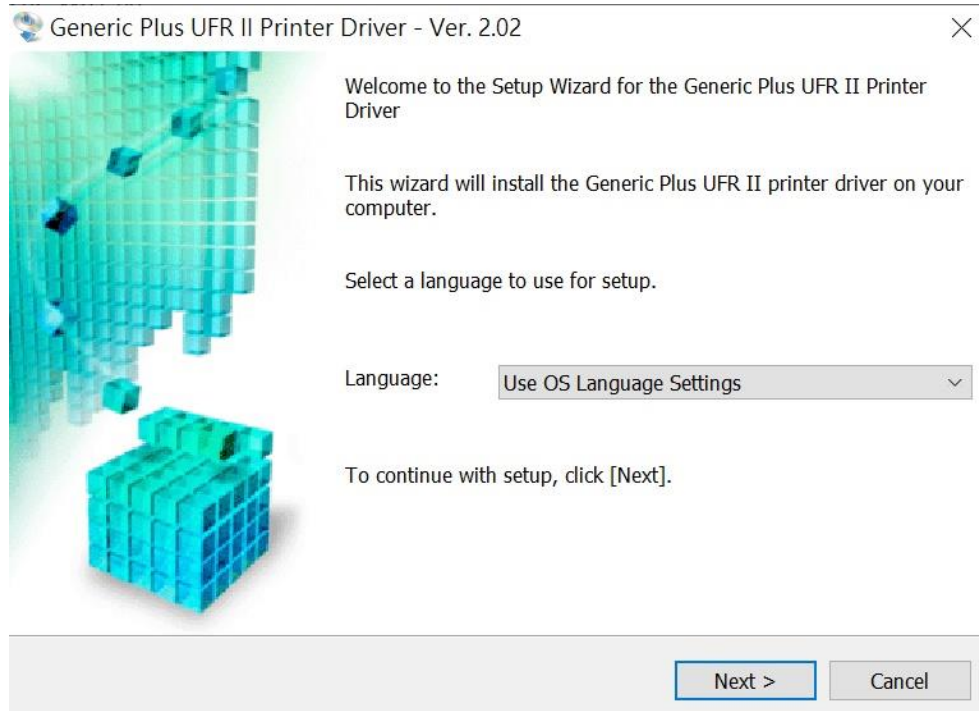
Open the downloaded file, a same name new folder will be created. Go into new folder open "Setup.exe" start installation"

本機 > 下載 > GPlus\_UFRII\_Driver\_V202\_W64\_00

名稱	修改日期	類型	大小
Driver	2019/10/16 11:29	檔案資料夾	
etc	2019/10/16 11:29	檔案資料夾	
misc	2019/10/16 11:29	檔案資料夾	
Readme	2019/10/16 11:29	檔案資料夾	
Setup	2018/12/27 00:00	應用程式	4,744 KB
Setup	2019/4/20 00:00	組態設定	1 KB

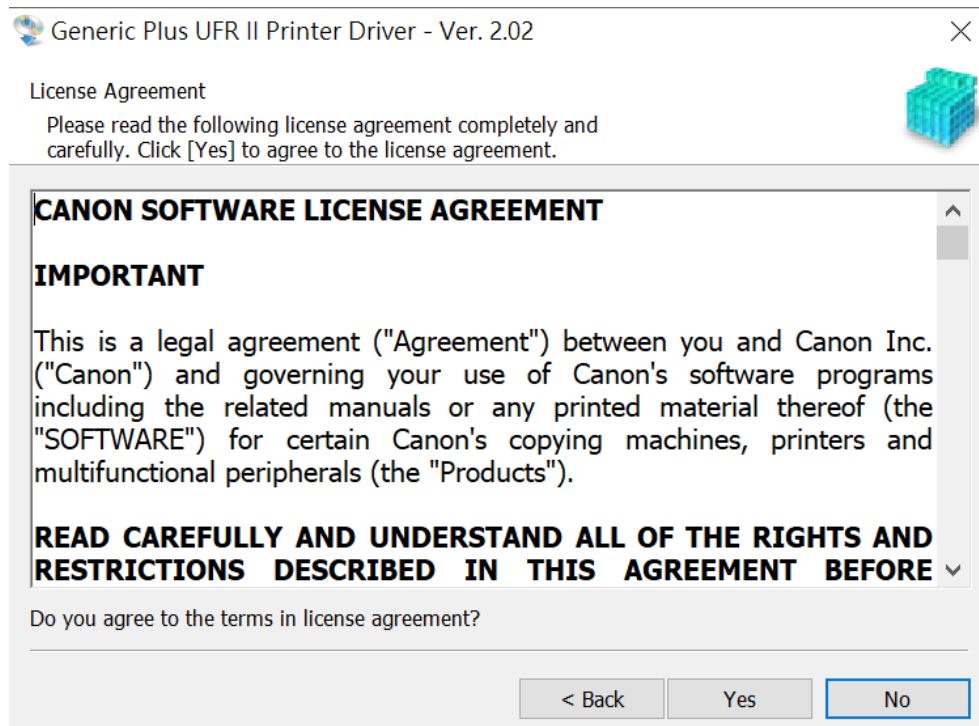
4. 選擇語言及按「Next」

Choose language and press “Next”



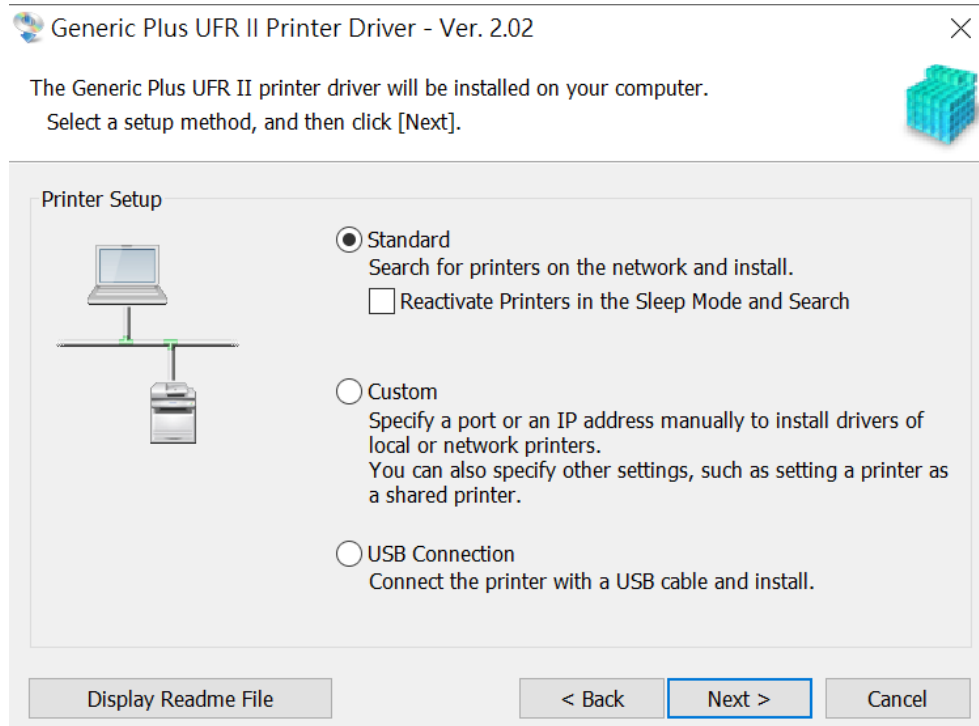
5. 按「Yes」

Press “Yes”



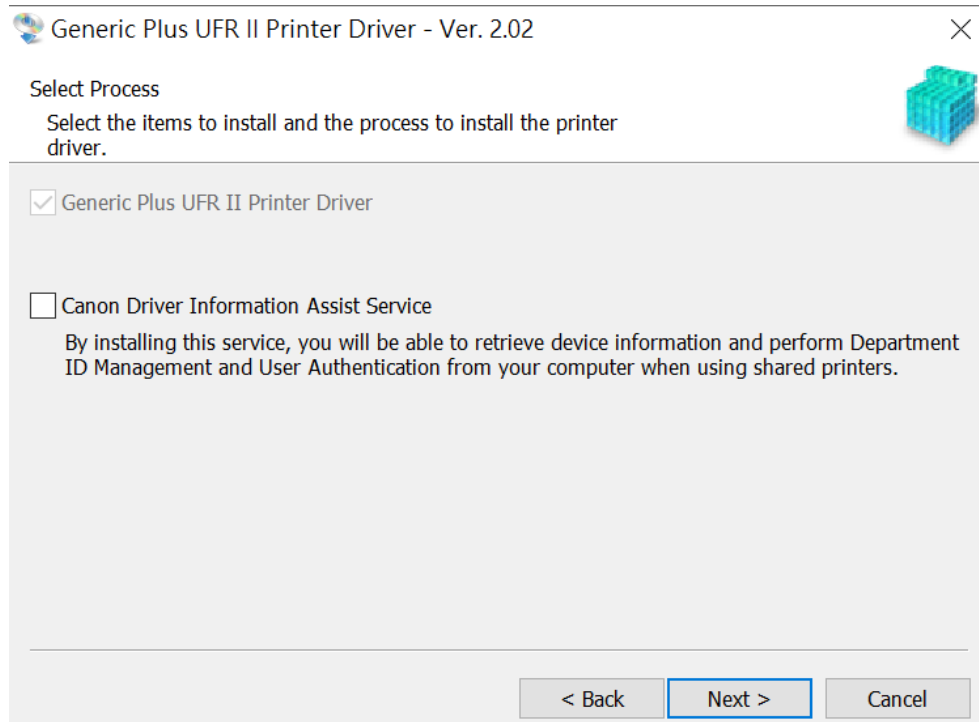
6. 選擇「Standard」，按「Next」

Choose “Standard”, press “Next”



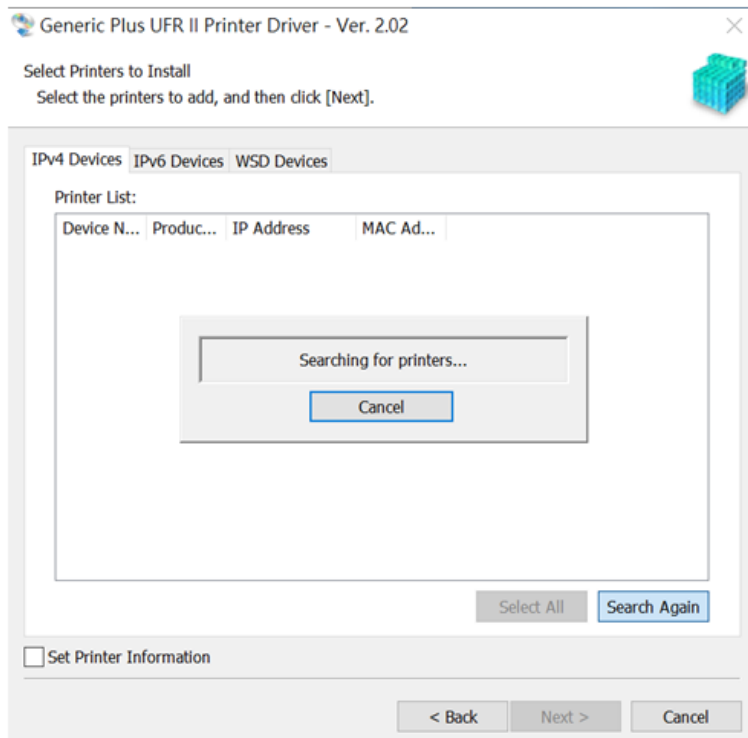
7. 按「Next」

Press “Next”



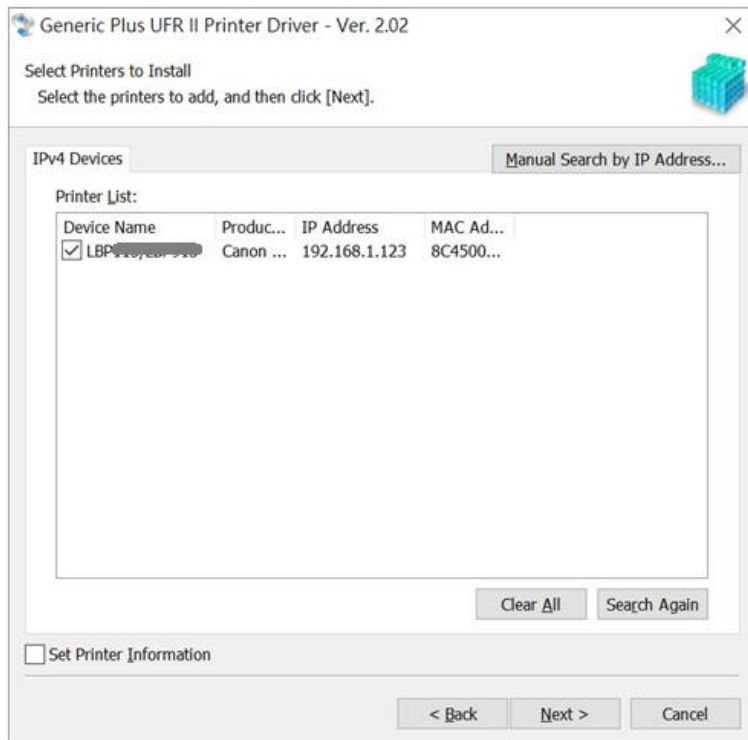
8. 等待搜尋印表機

Wait for searching printer

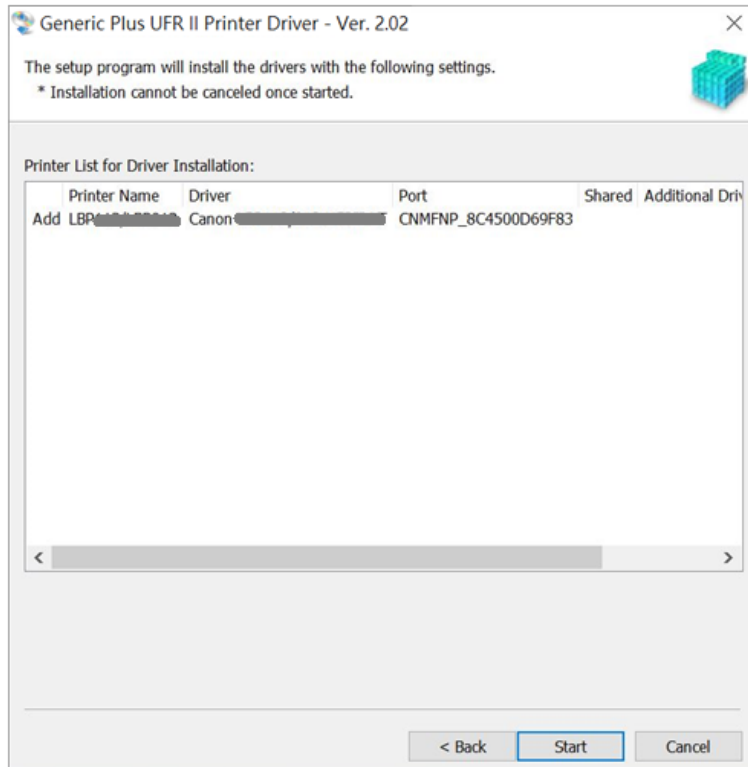


9. 勾選 LBP623Cdw，按「Next」

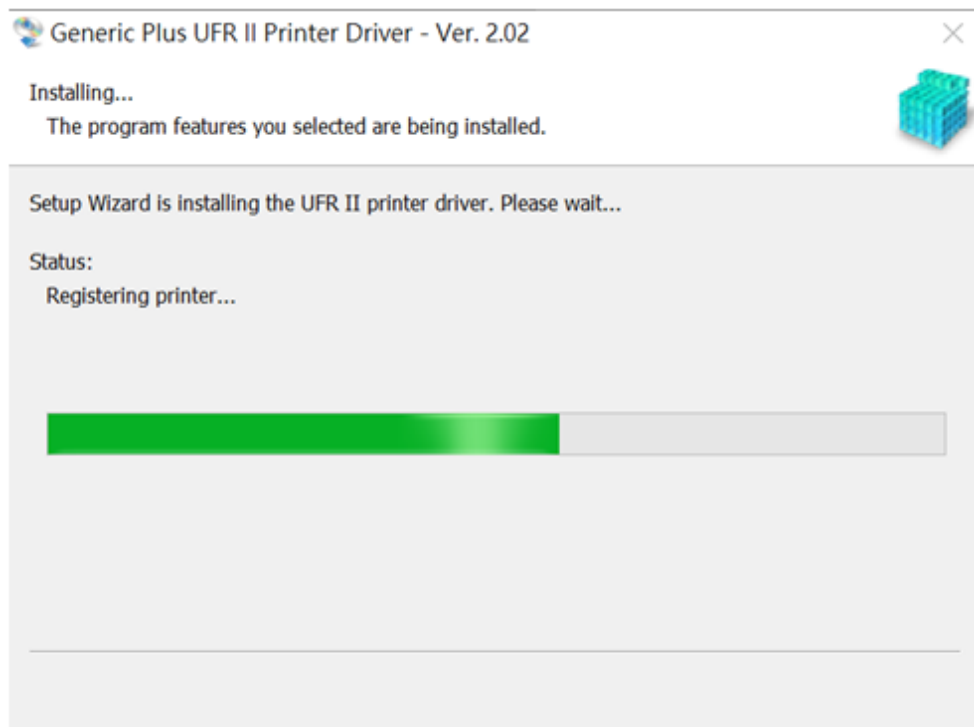
Select LBP623Cdw, press "Next"



10. 確定印表機資料，按「Start」  
Confirm printer information, press “Start”

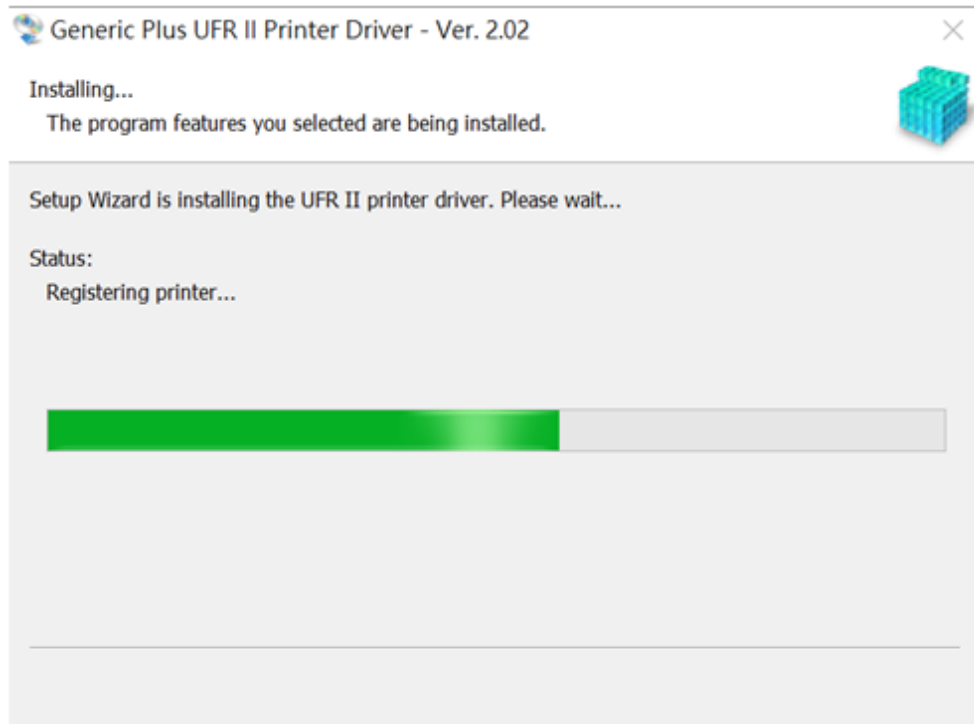


11. 等待安裝程序完成  
Wait for the installation progress



12. 按「Exit」完成安裝

Click "Exit" to finish installation



-完-  
-End-