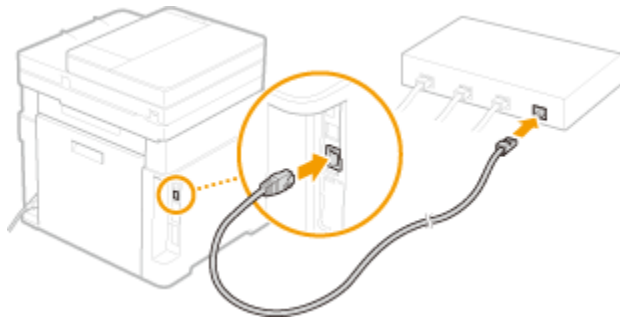


**MF641Cw 在 Windows 透過 LAN 連線連接印表機之驅動程式步驟**  
**Driver installation procedure for MF641Cw in Windows (Via Wired LAN)**

先將打印機連接到網路，詳細可參考以下步驟

Connect printer to network first, please refer to following procedure

1. 開啟印表機  
Turn on the printer
2. 在主畫面中點選「功能表」  
Tap “Menu” in the Home Screen
3. 點選「參數選擇」，再點選「網路」  
Tap “Preferences”, then tap “Network Settings”
4. 點選「有線 / 無線區域網路」  
Tap “Select Wired / Wireless LAN”
5. 點選 <有線區域網路>  
Tap “Wired LAN”
6. 使用區域網路纜線將本機連接到路由器  
推入接頭，直至聽到喀嗒聲  
Connect the machine to router by using a LAN cable, push the connector in until it clicks into place



等待約 2 分鐘，直到本機的 IP 位址設定完成

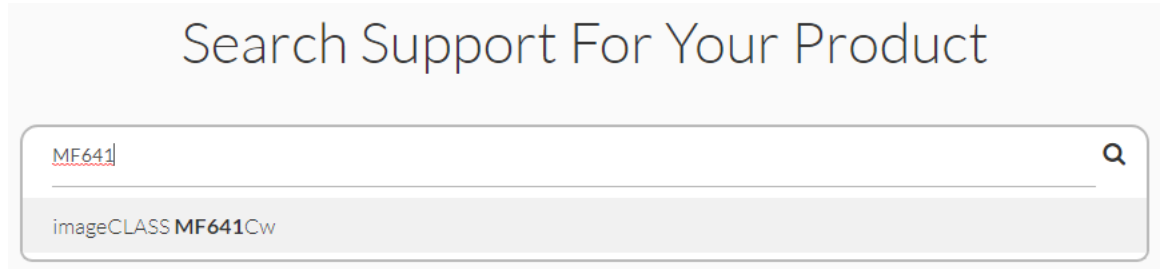
Wait approximately 2 minutes until IP address settings of the machine complete

## 下載及安裝步驟

### Driver download and installation procedure

7. 到佳能網站 <https://hk.canon/en/support>，選擇相關的印表機型號及下載印表機的驅動程式

Go to: <https://hk.canon/en/support>, select related printer model, then download the printer driver



8. 選擇並下載以下檔案

Choose and download below files:

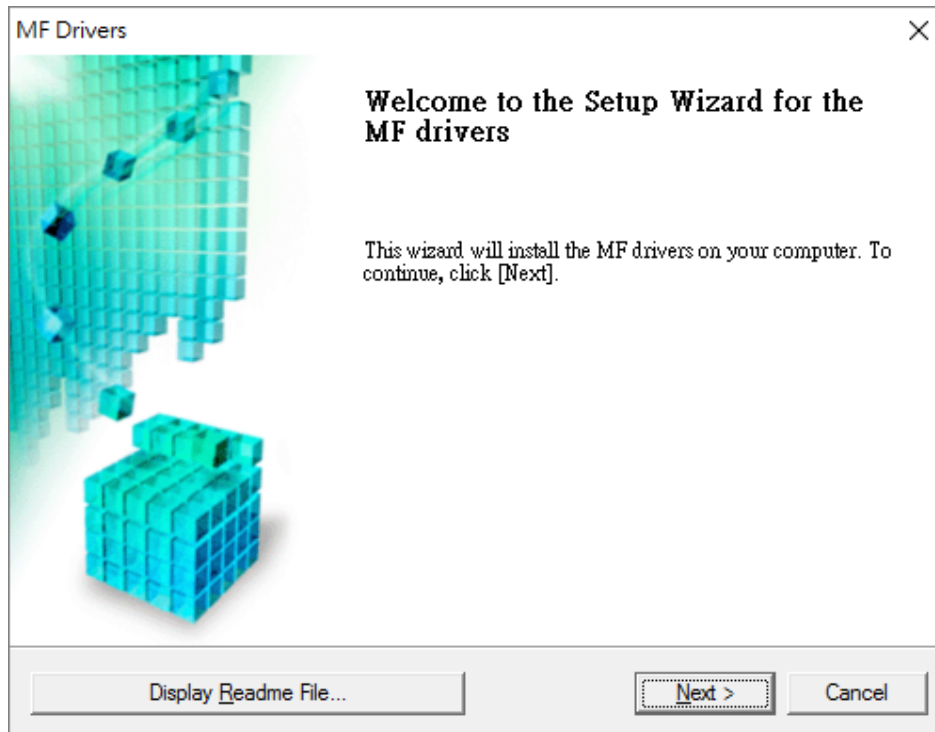
- 打印機驅動程式 / Printer Driver

[\[Windows \\*\\*bit\] MF644Cdw/MF641Cw/MF642Cdw MFDivers \(Generic Plus UFR II / Generic Plus PCL6 / Generic Plus PS3 / Generic FAX / ScanGear\)](#)

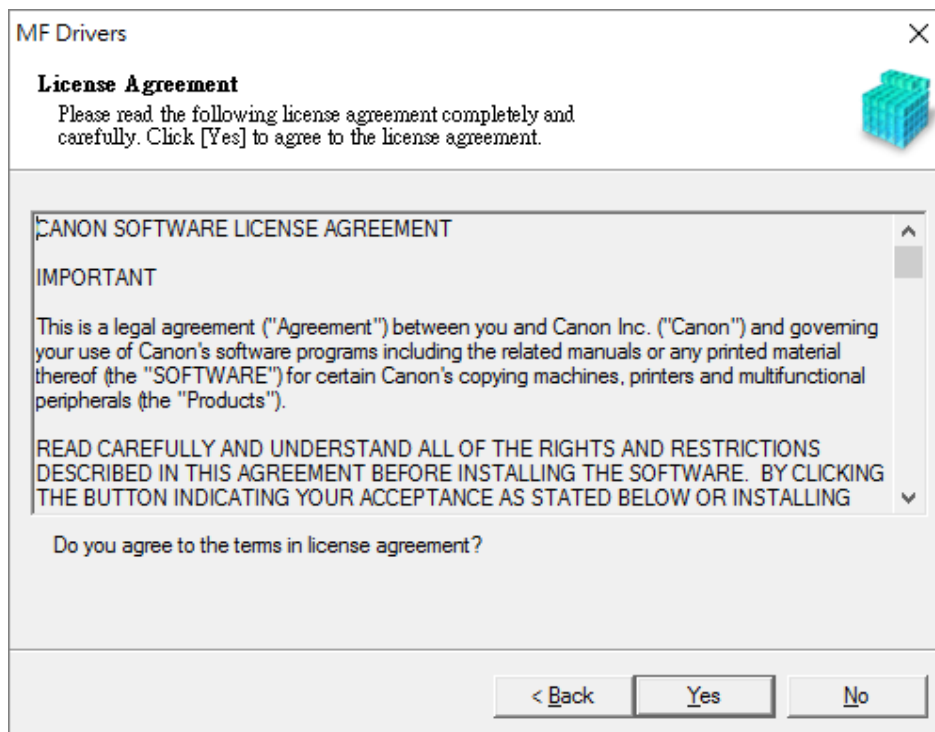
- 掃描軟件/ Scanning Software

[\[Windows 32bit & 64bit\] MF Scan Utility Ver. \\*.\\*](#)

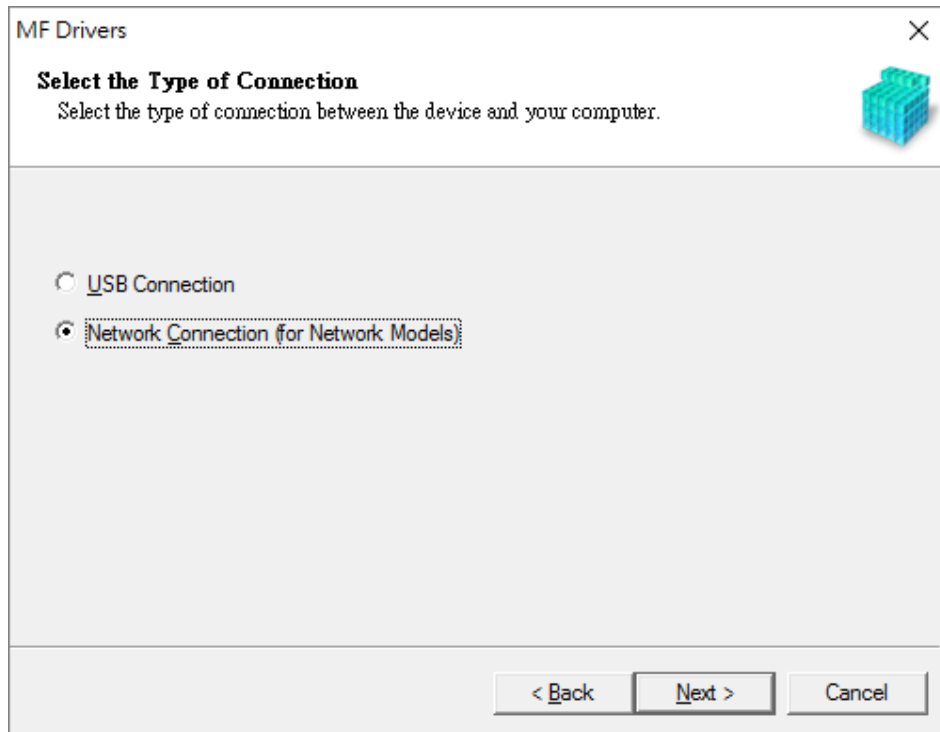
9. 執行檔案〔MF642CMFDriverXXXXXX.exe〕按「Next」  
Run File [MF642CMFDriverXXXXXX.exe], click "Next"



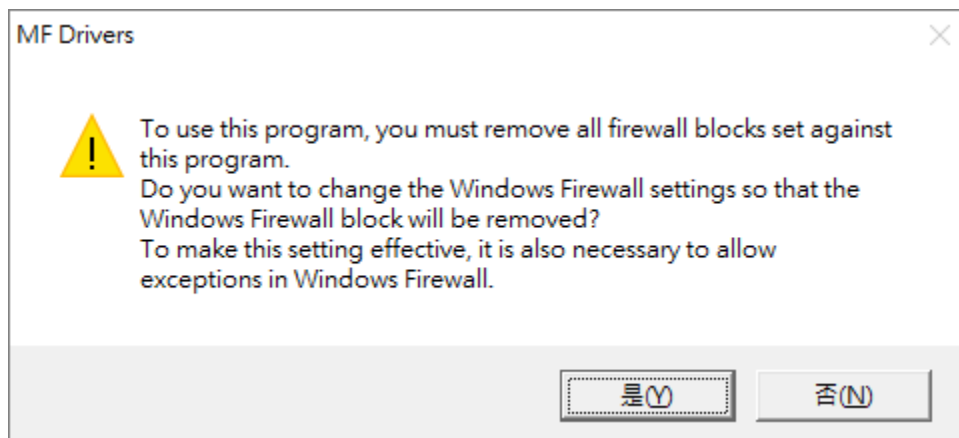
10. 按「Yes」  
Click "Yes"



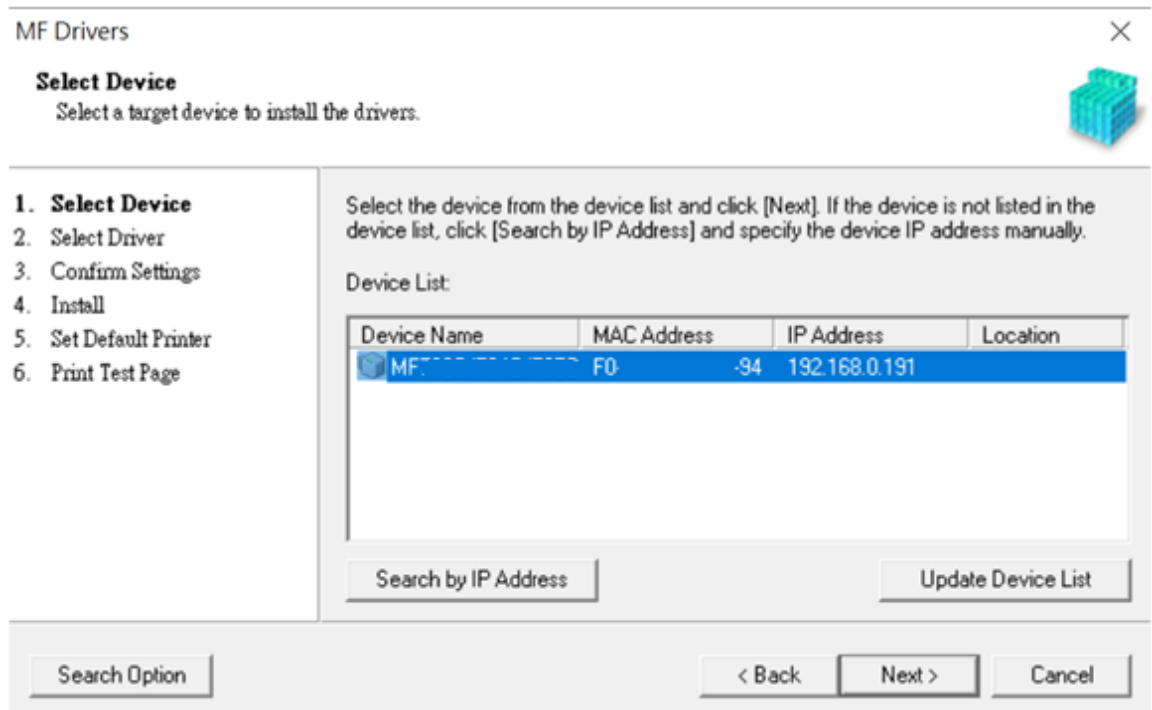
11. 選擇「Network connection (for Network Models)」，按「Next」  
Choose “Network connection (for Network Models)”, click “Next”



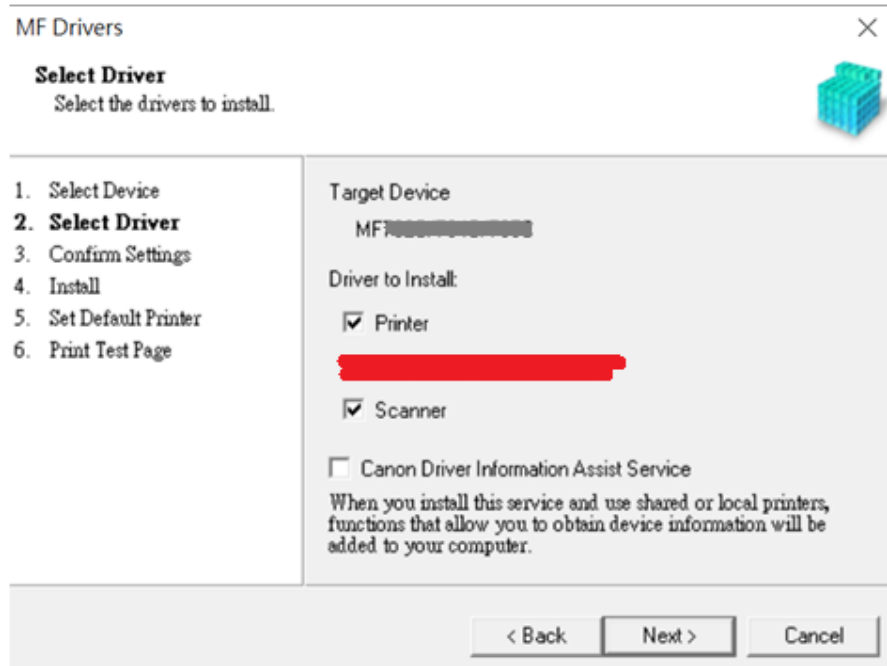
12. 按「是」  
Click “Yes”



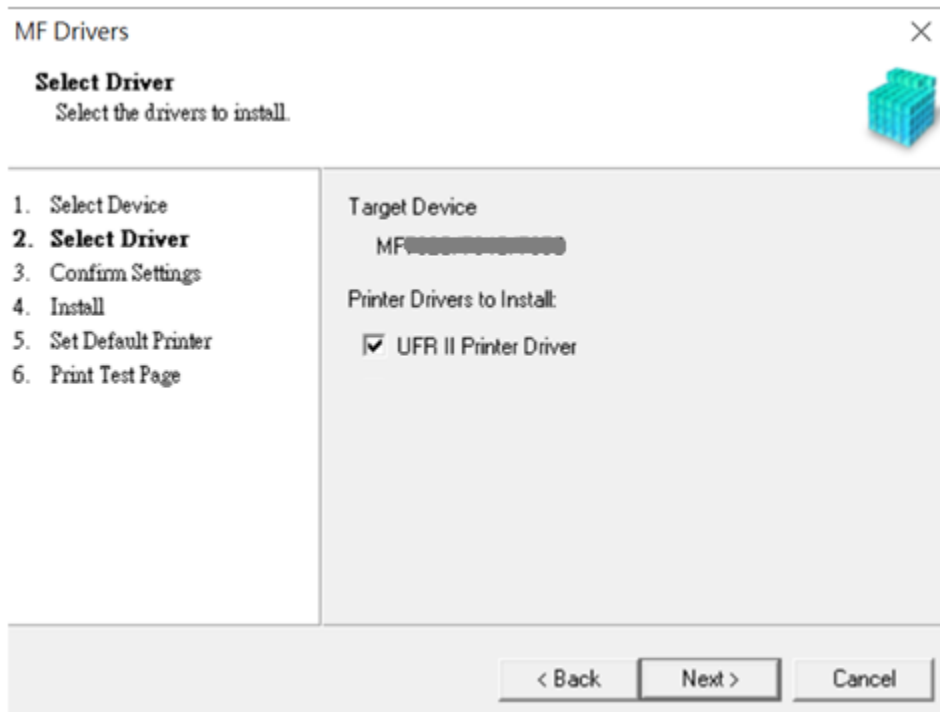
13. 程式會自動偵測網絡上的印表機，選擇後按「Next」  
Program will automatic detect the network printer, choose printer and click “Next”



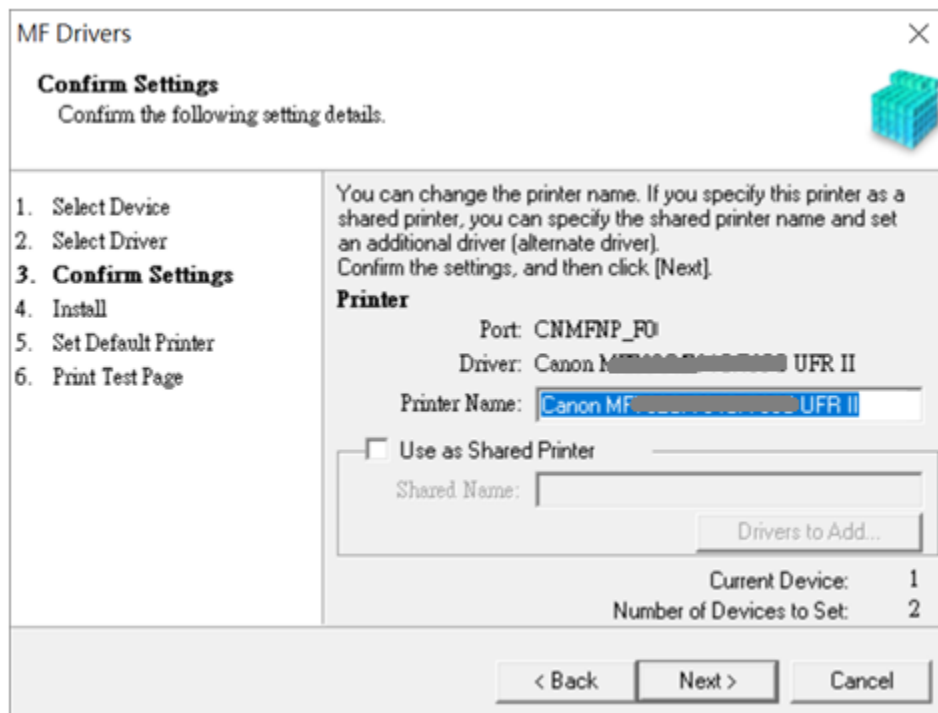
14. 按「Next」  
Click “Next”



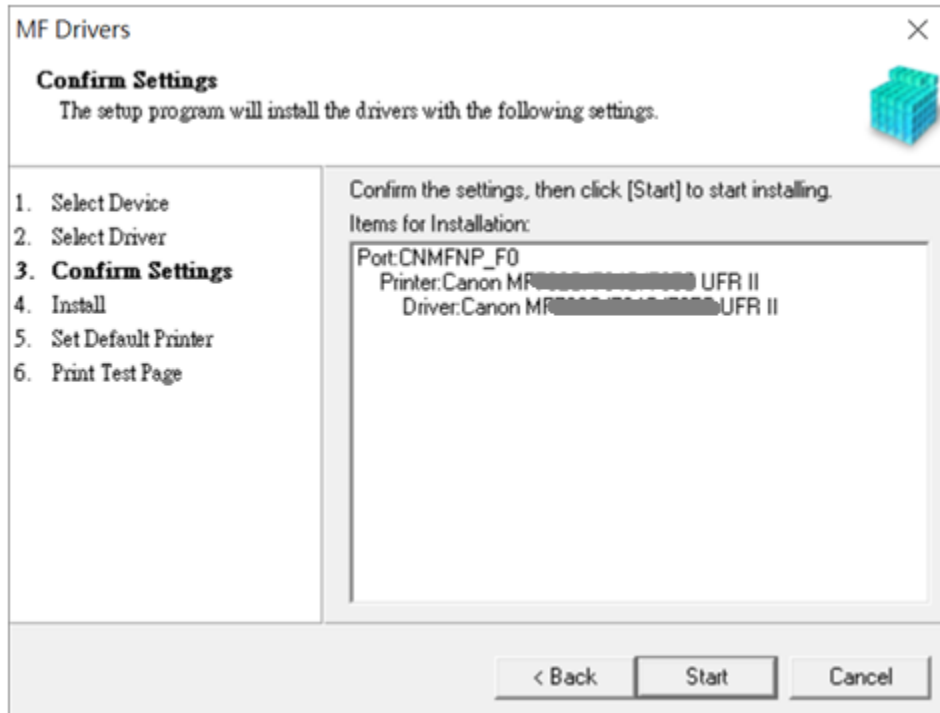
15. 按「Next」  
Click “Next”



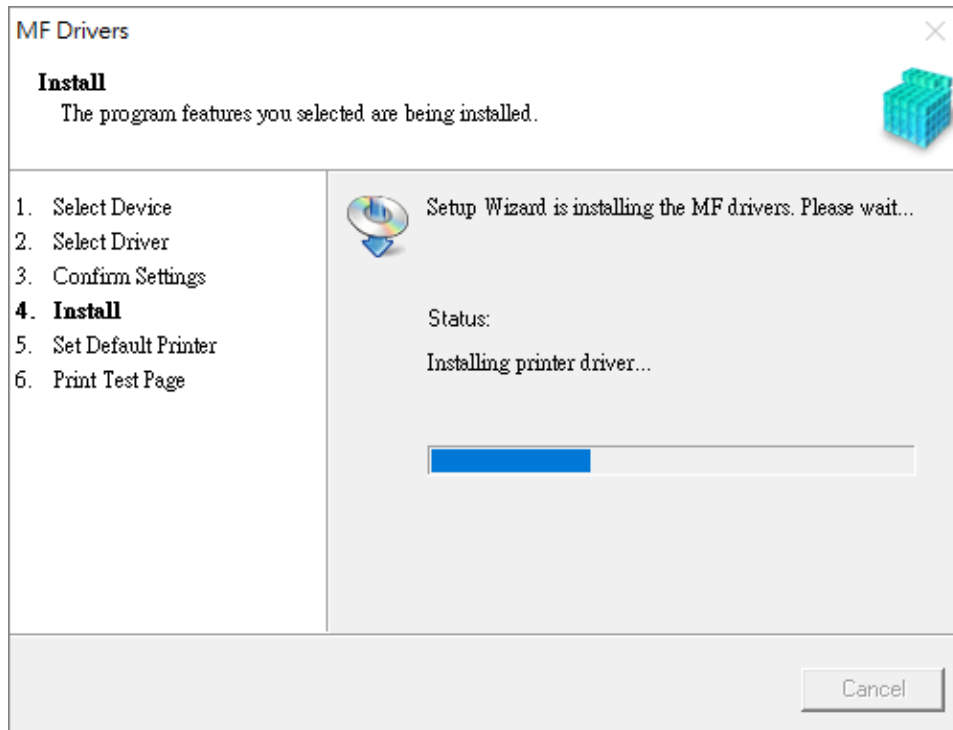
16. 按「Next」  
Click “Next”



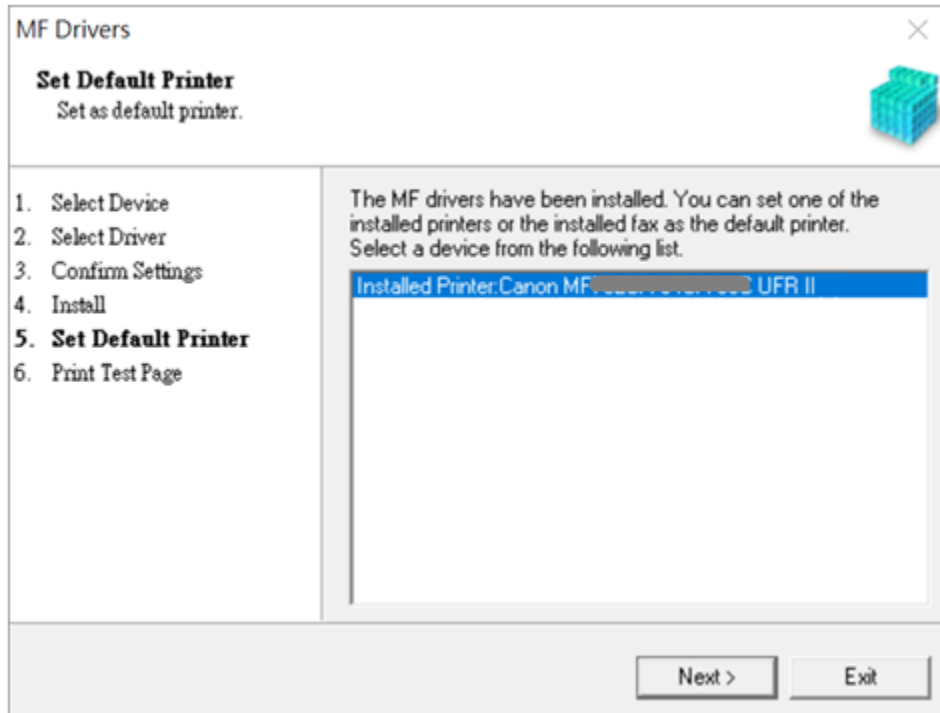
17. 按「Start」  
Click “Start”



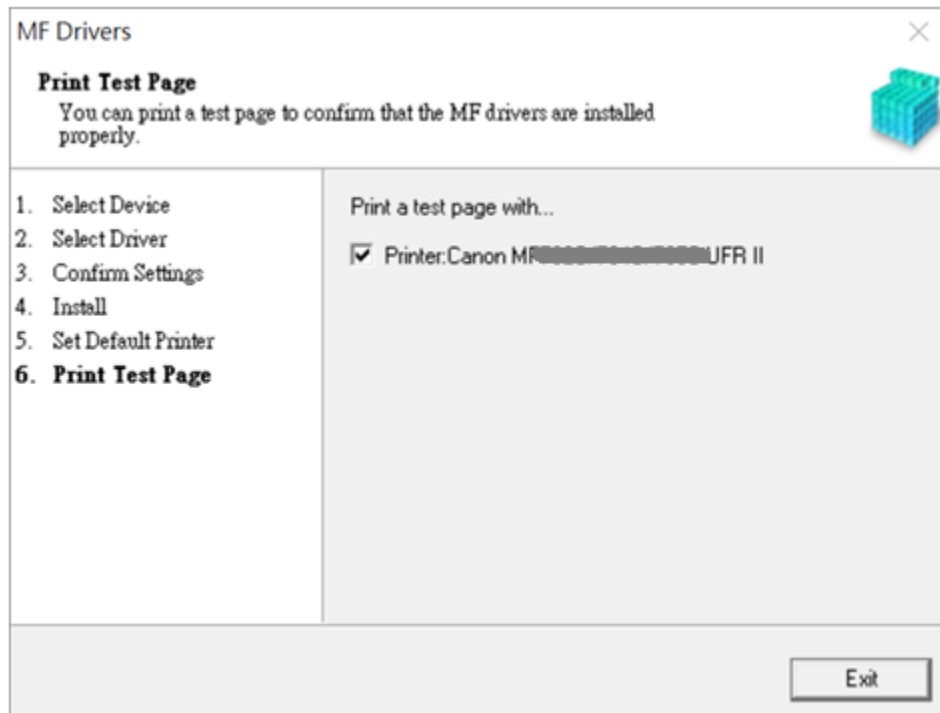
18. 等待安裝程序完成  
Waiting for the installation progress



19. 選擇打印機，然後按「Next」  
Choose printer, then click “Next”



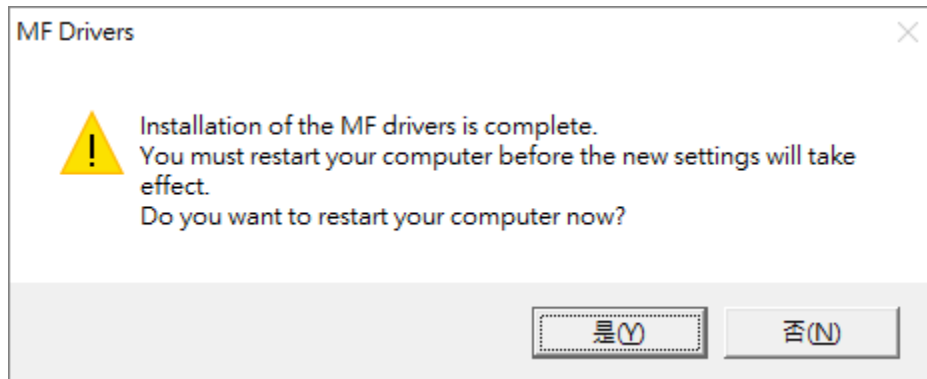
20. 按「Exit」  
Click “Exit”





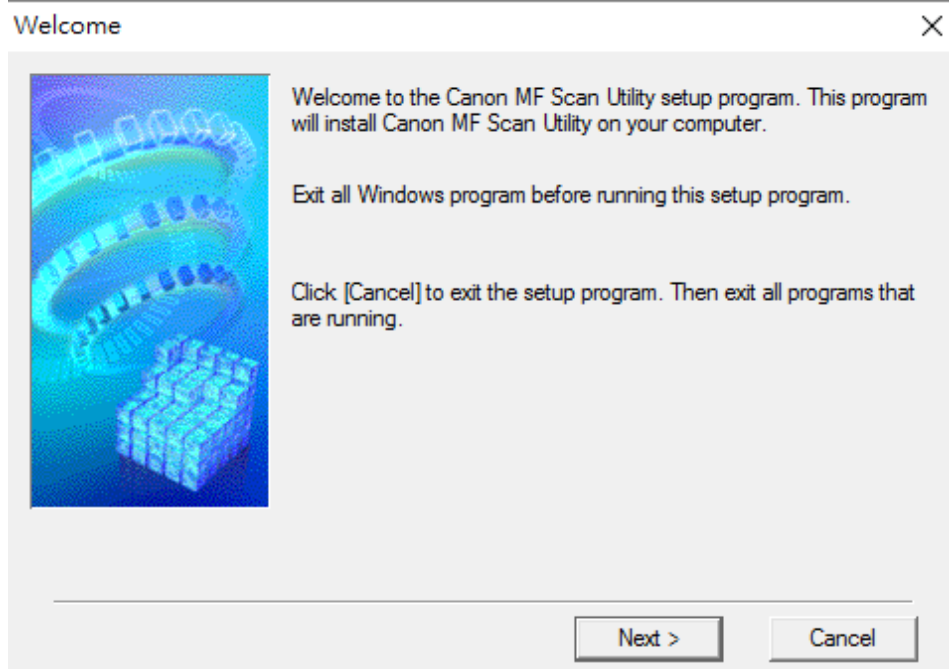
21. 按「是」重啟電腦

Click "Yes" to restart computer

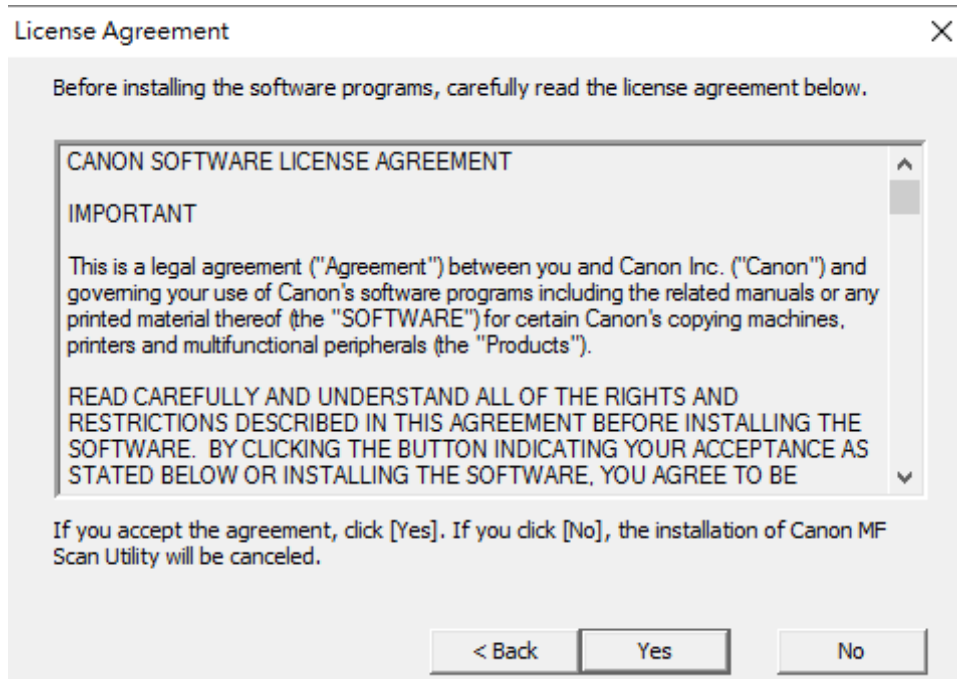


安裝掃描軟件MF Scan Utility  
MF Scan Utility installation procedure

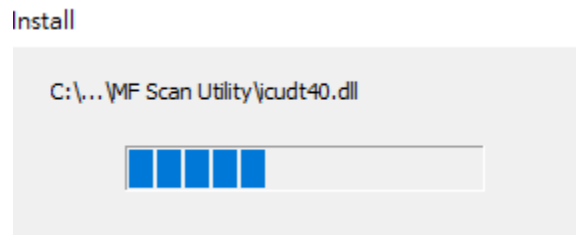
22. 執行檔案〔MFScanUtility\_\*\*\*\*\*\_EN.exe〕按「Next」  
Run the file [MFScanUtility\_\*\*\*\*\*\_EN.exe], click "Next"



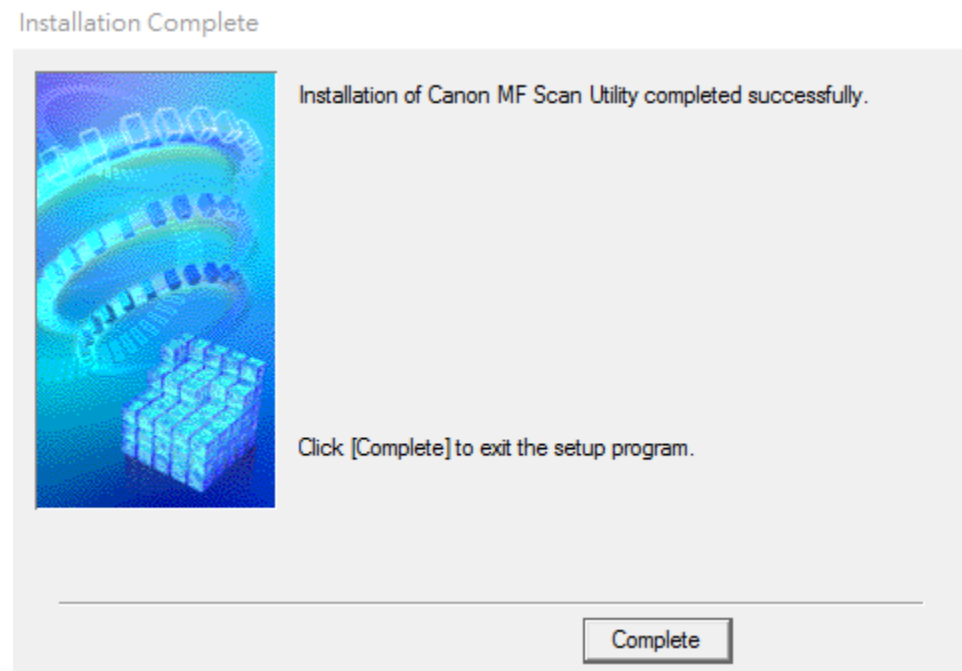
23. 按「Yes」  
Click "Yes"



24. 等待安裝程序完成  
Waiting for the installation progress



25. 按「Complete」完成安裝  
Click "Complete" to finish installation



-完-  
-End-