

MF746Cx 在 Windows 透過 WiFi 連線連接印表機之驅動程式步驟
Driver installation procedure for MF746Cx in Windows (Via Wi-Fi)

先將打印機連接到網路，詳細可參考以下步驟

Connect printer to network first, please refer to following procedure

1. 開啟印表機
Turn on the printer
2. 在主畫面中點選「功能表」
Tap “Menu” in the Home Screen
3. 點選「參數選擇」，再點選「網路」
Tap “Preferences”, then tap “Network Settings”
4. 點選「無線區域網路設定」
Tap “Wireless LAN Settings”
5. 點選 <SSID 設定>
Tap “SSID setting”
6. 點選 <選擇存取點>
Tap “Select Access Point”
7. 選擇無線區域網路路由器名稱(SSID)
Select the wireless router’s signal (SSID)



8. 使用數字鍵輸入網路金鑰（路由器密碼），然後點選 <套用>
Enter the network key using the numeric keys, and tap “Apply”
9. 點選 <是>
Tap “Yes”

10. 設定完成時，會顯示「已連線」

Wait until message "Connected" is displayed

等待約 2 分鐘，直到本機的 IP 位址設定完成

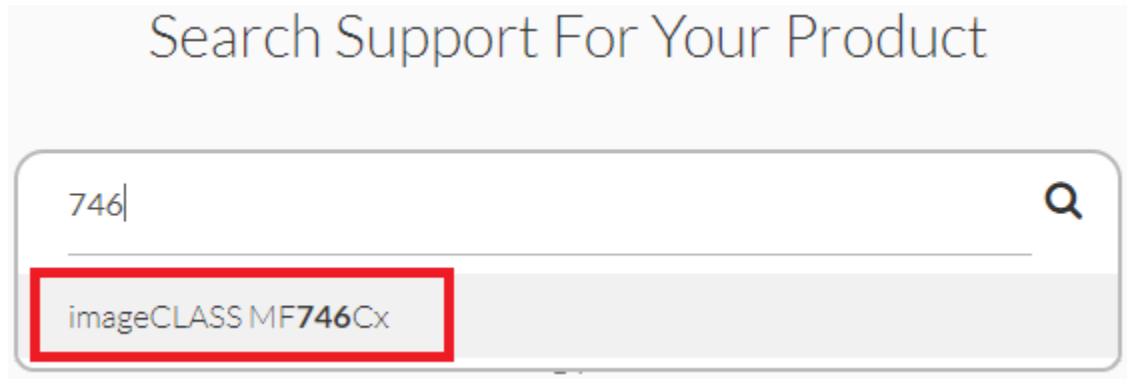
Wait approximately 2 minutes until the IP address settings of the machine complete

下載及安裝步驟

Driver download and installation procedure

11. 到佳能網站 <https://hk.canon/en/support>，選擇相關的印表機型號及下載印表機的驅動程式

Go to: <https://hk.canon/en/support>, select related printer model, then download the printer driver



12. 選擇並下載以下檔案

Choose and download below files:

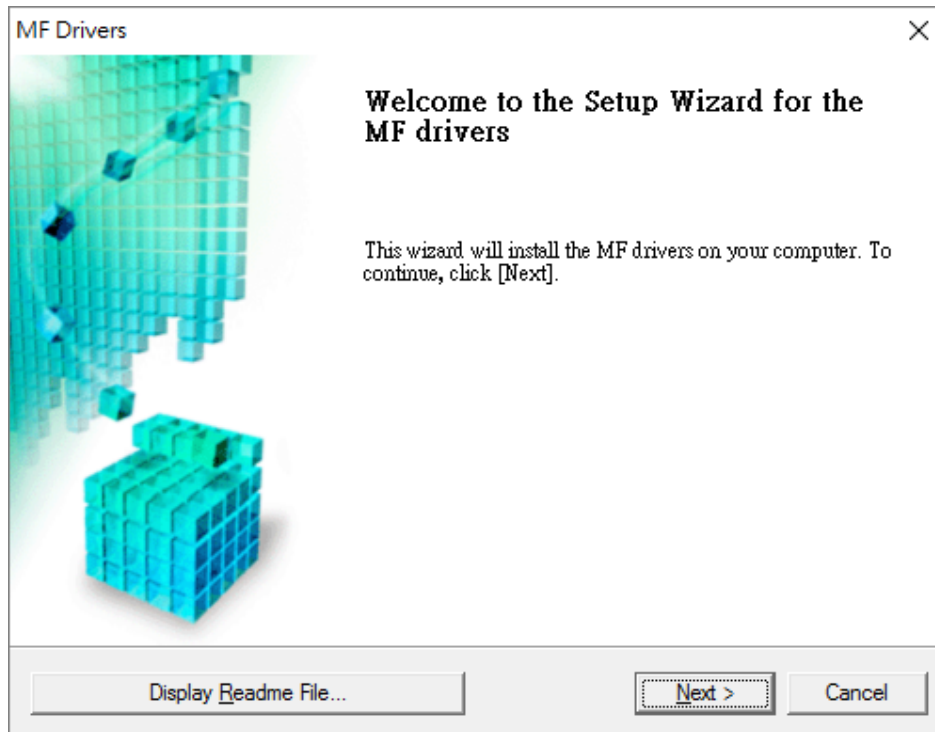
- 打印機驅動程式 / Printer Driver

[\[Windows **bit\] MF746Cx MFDivers \(Generic Plus UFR II / Generic Plus PCL6 / Generic Plus PS3 / Generic FAX / ScanGear\)](#)

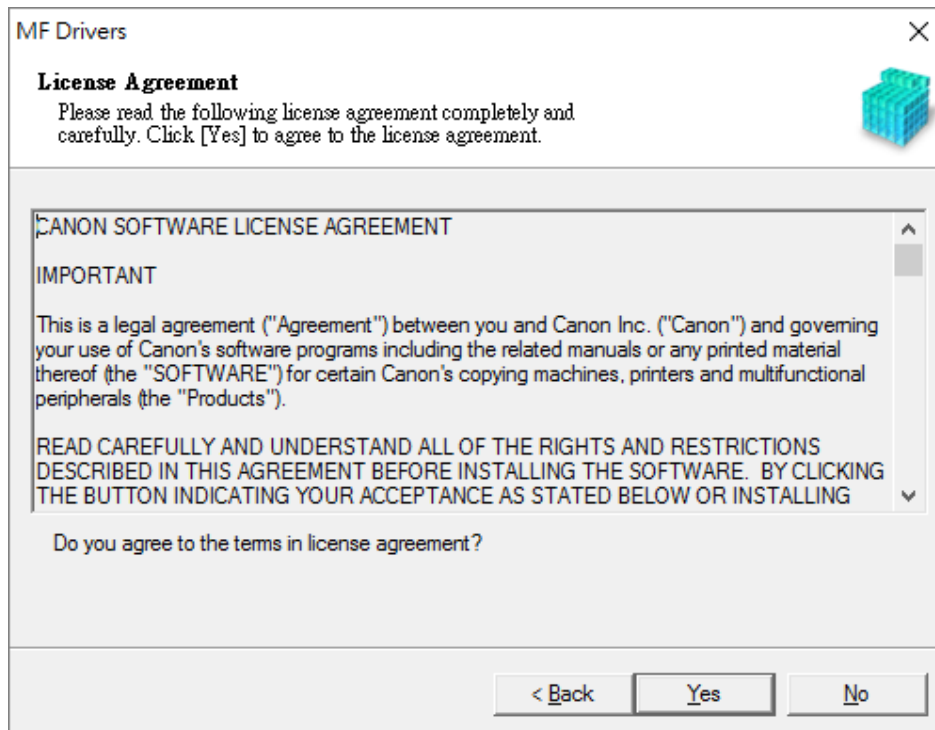
- 掃描軟件/ Scanning Software

[\[Windows 32bit & 64bit\] MF Scan Utility Ver.*.*](#)

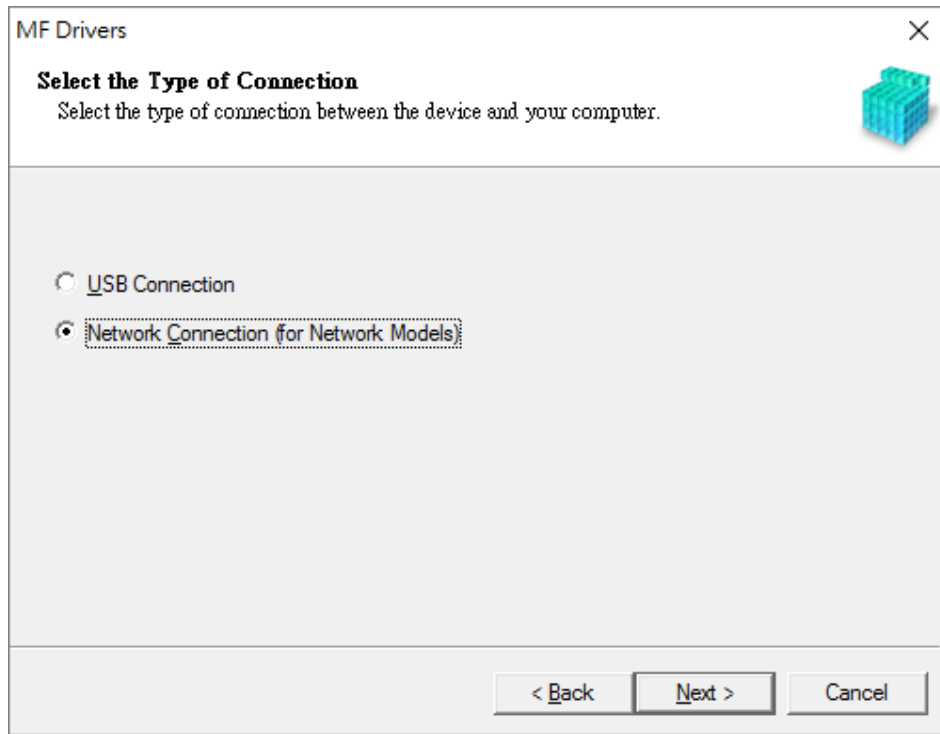
13. 執行檔案〔MF746CMFDriver*****.exe〕按「Next」
Run File [MF746CMFDriver*****.exe], click "Next"



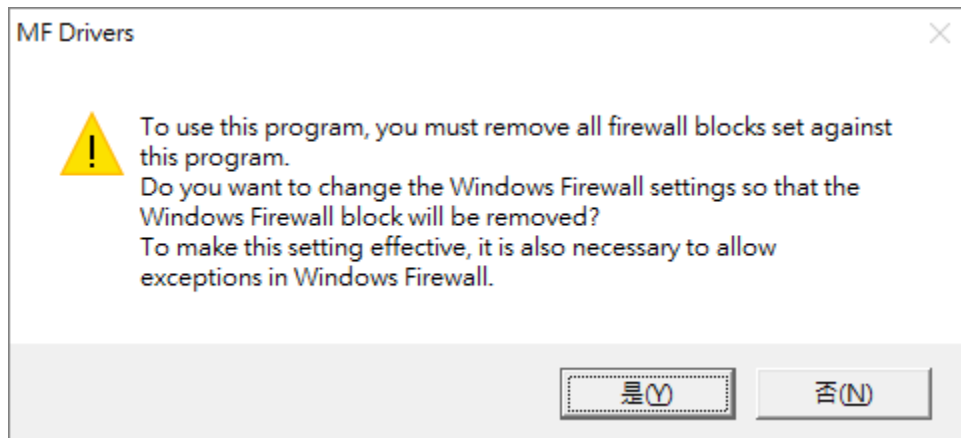
14. 按「Yes」
Click "Yes"



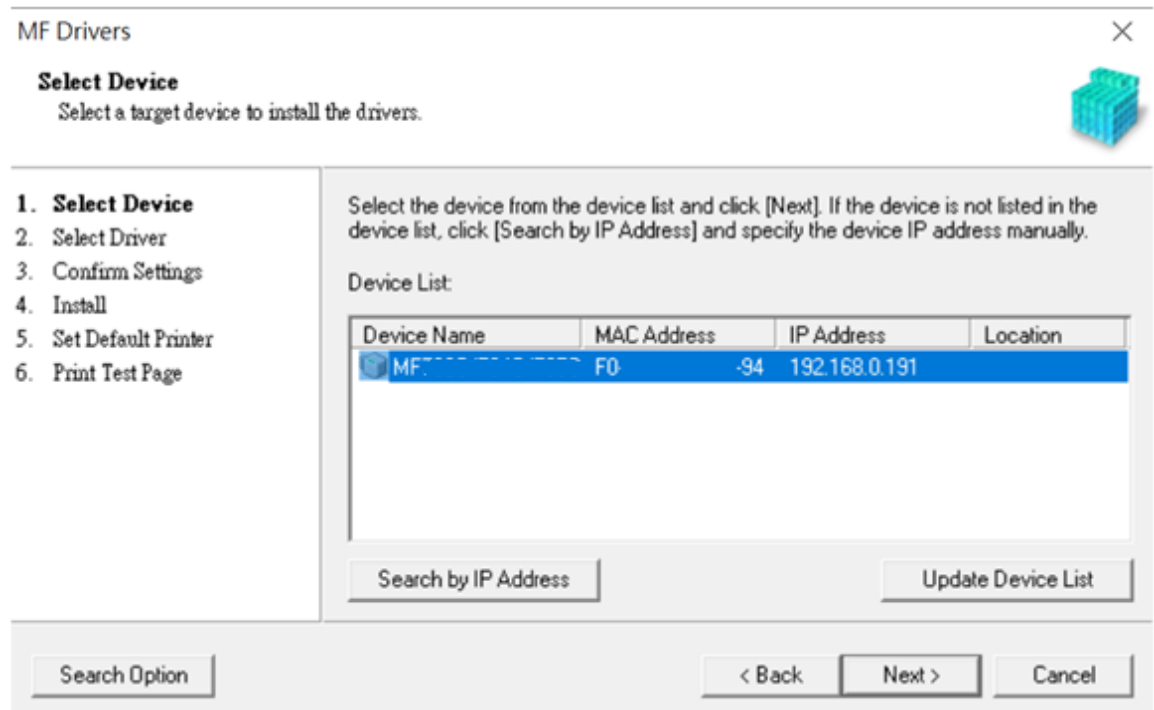
15. 選擇「Network connection (for Network Models)」，按「Next」
Choose “Network connection (for Network Models)”, click “Next”



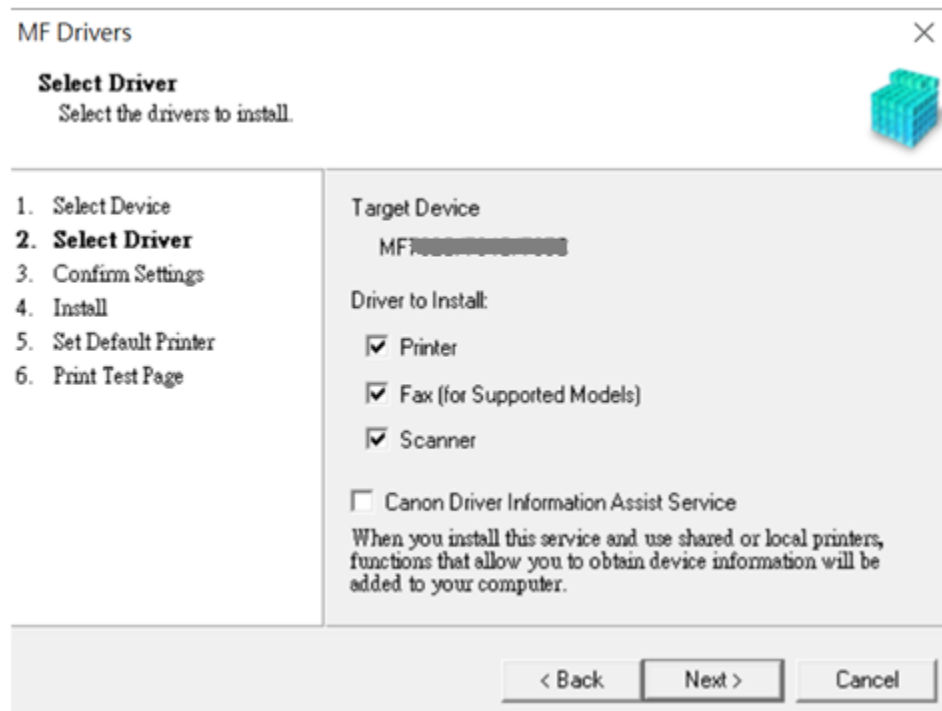
16. 按「是」
Click “Yes”



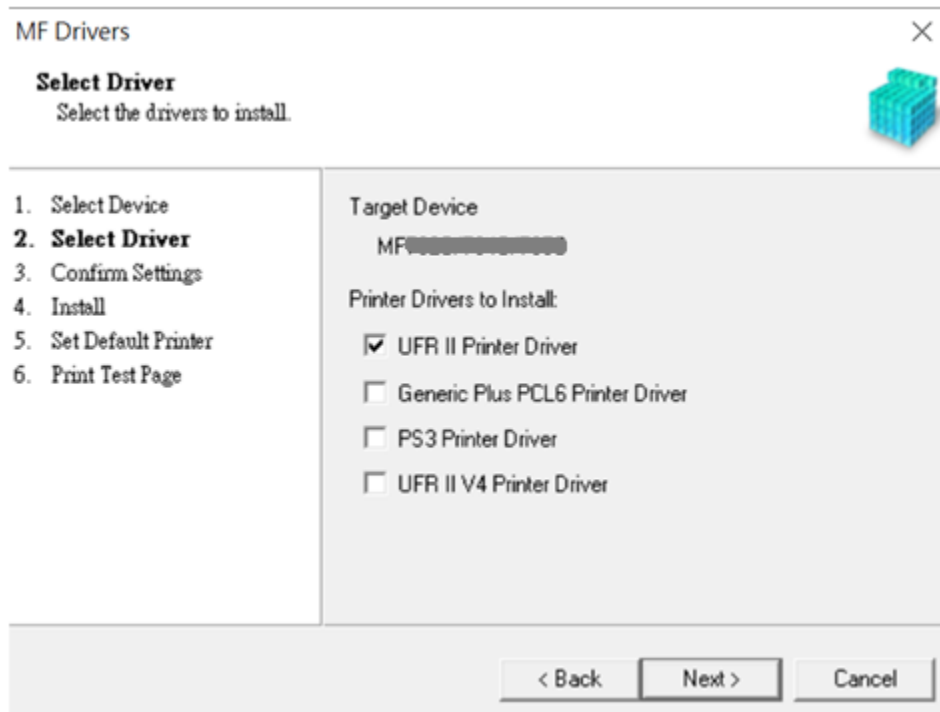
17. 程式會自動偵測網絡上的印表機，選擇後按「Next」
Program will automatic detect the network printer, choose printer and click “Next”



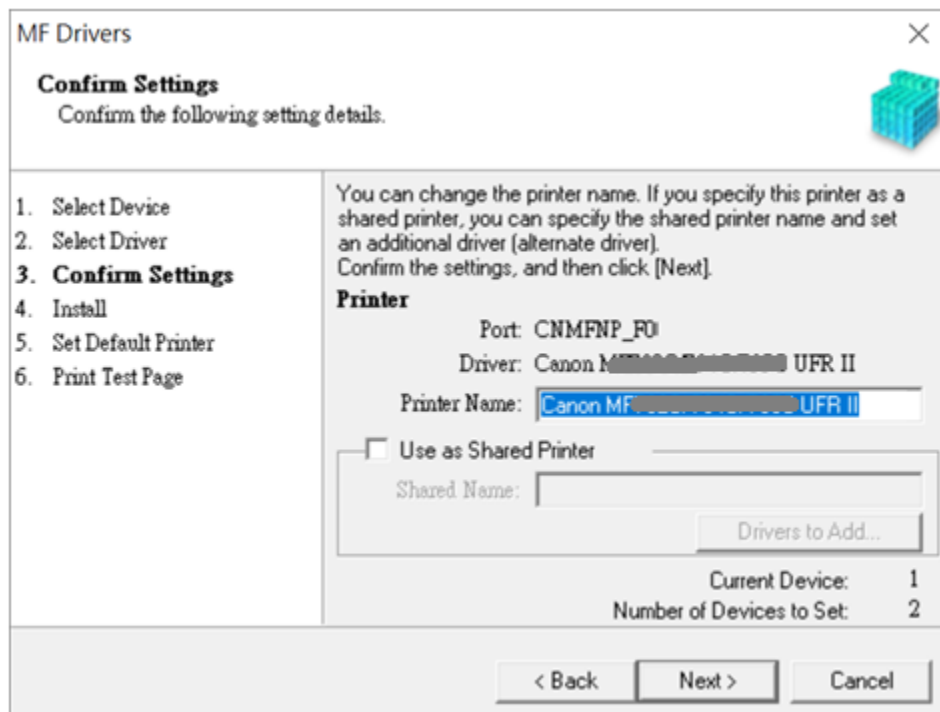
18. 按「Next」
Click “Next”



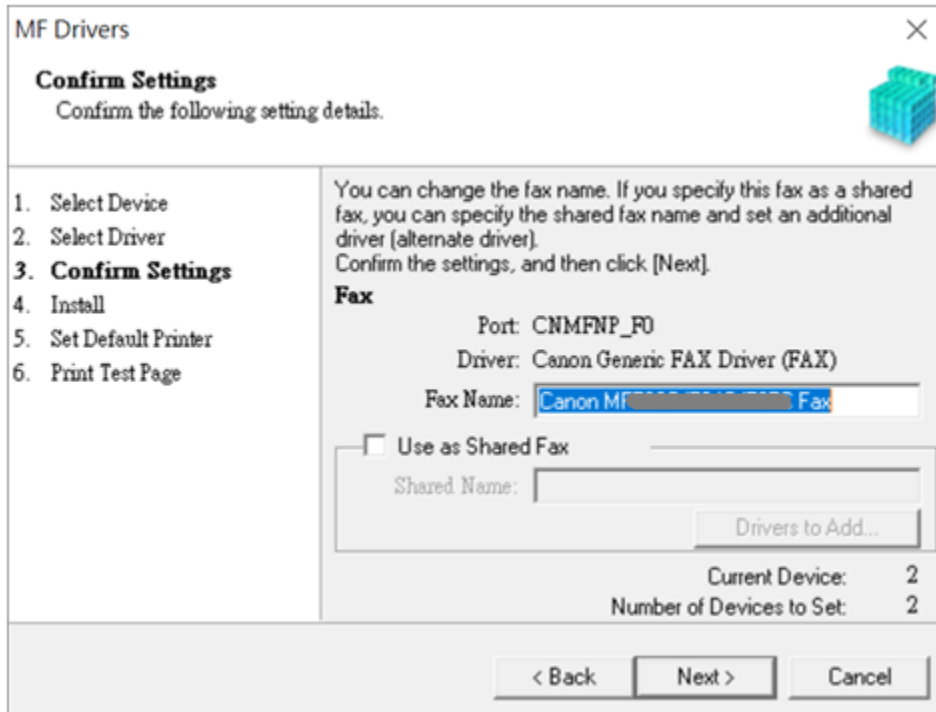
19. 按「Next」
Click “Next”



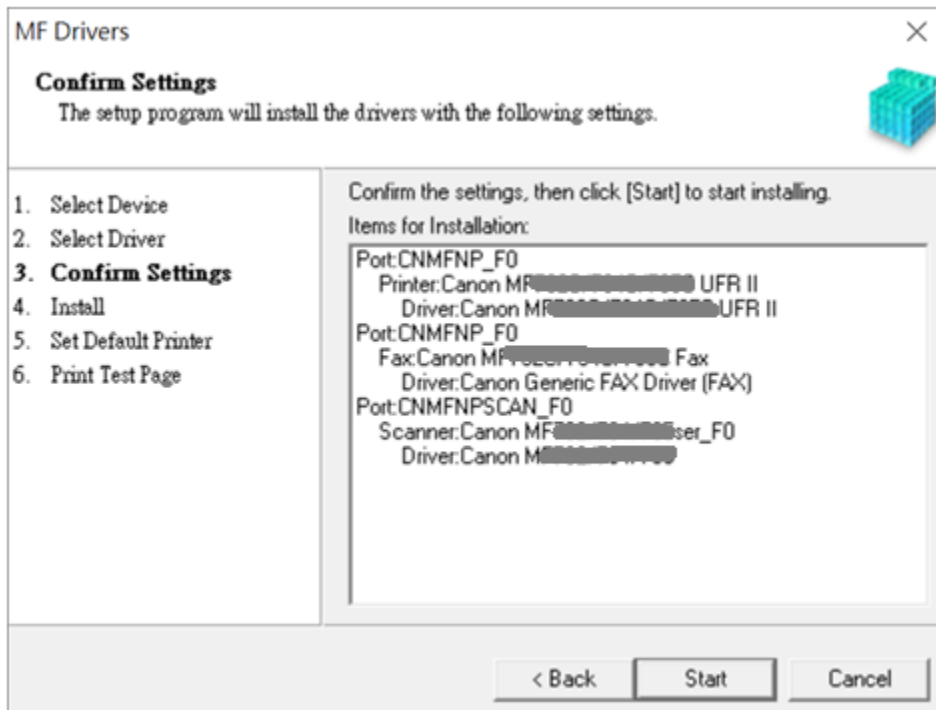
20. 按「Next」
Click “Next”



21. 按「Next」
Click "Next"

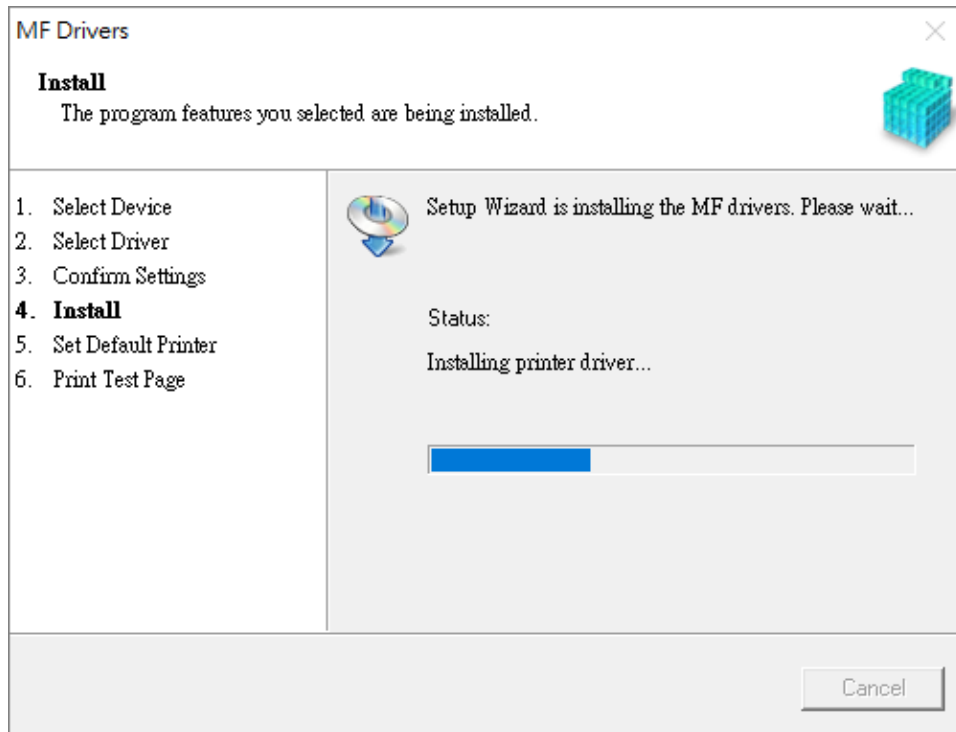


22. 按「Start」
Click "Start"



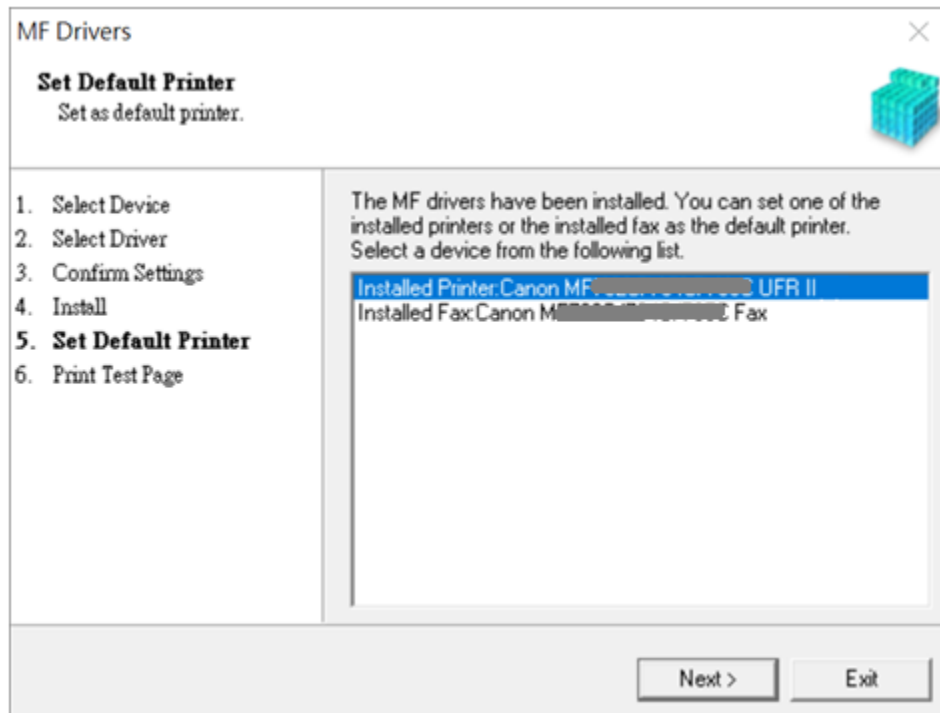
23. 等待安裝程序完成

Waiting for the installation progress

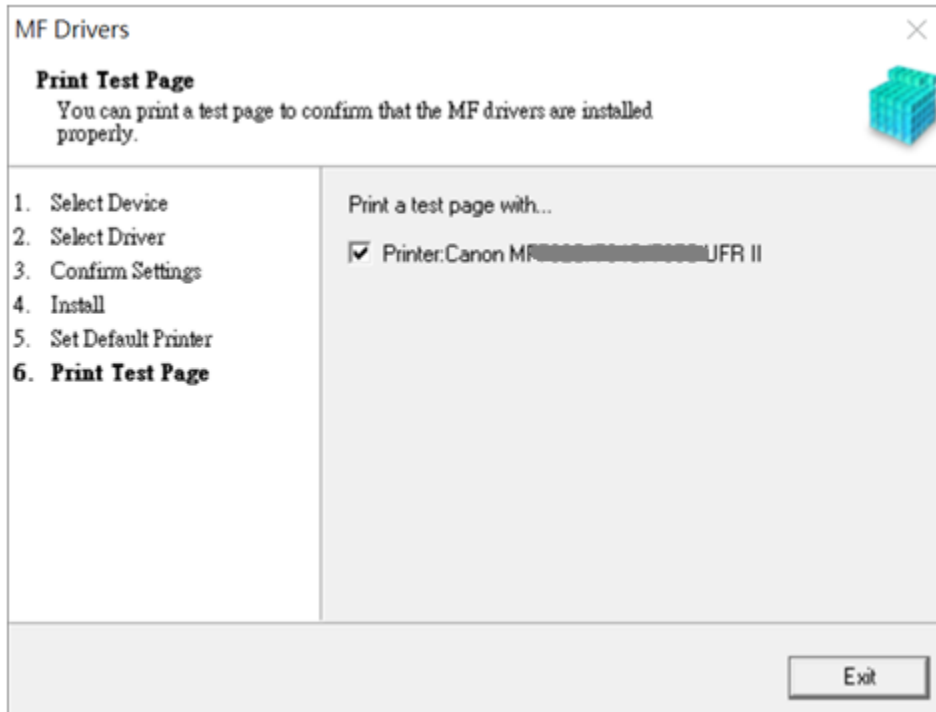


24. 選擇打印機，然後按「Next」

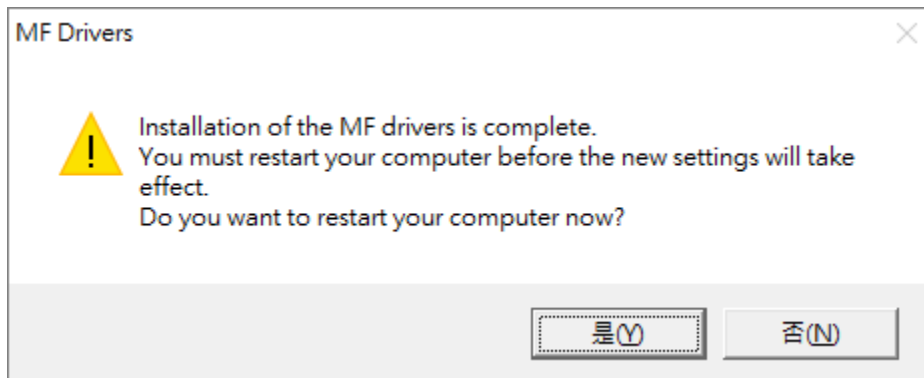
Choose printer, then click "Next"



25. 按「Exit」
Click "Exit"

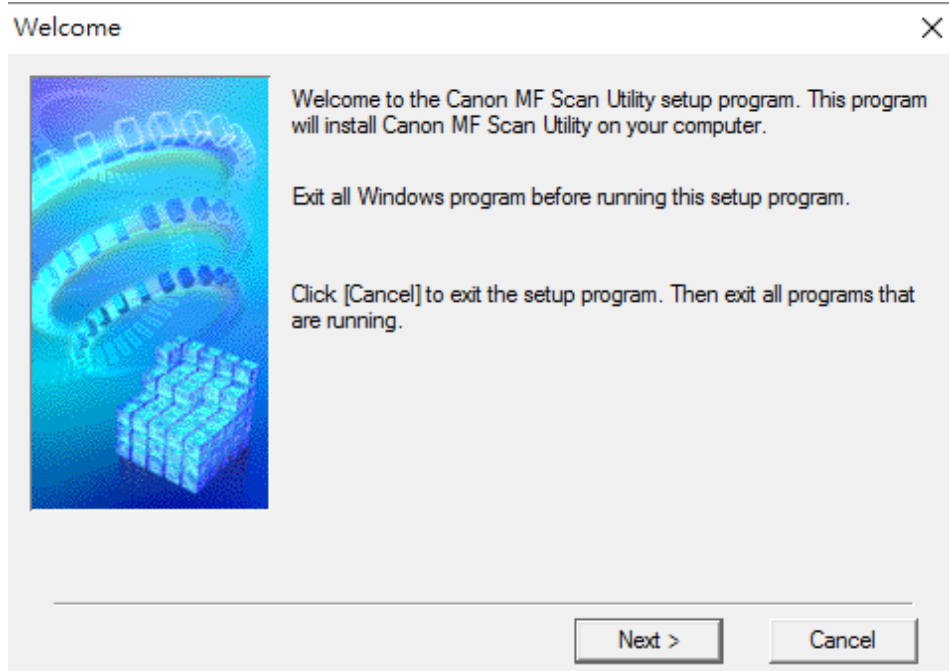


26. 按「是」重啟電腦
Click "Yes" to restart computer

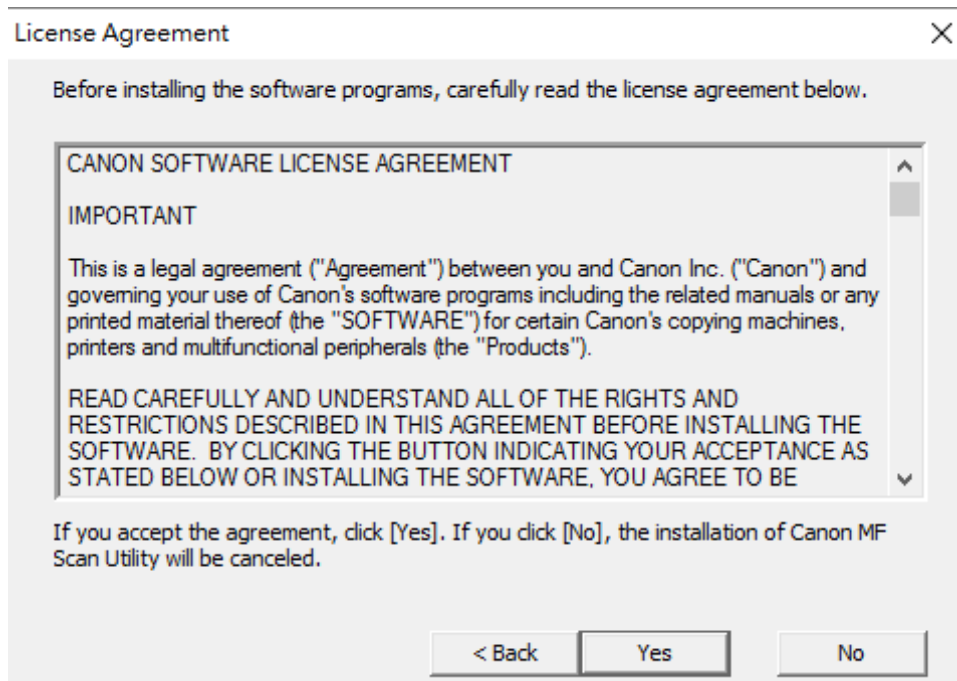


安裝掃描軟件MF Scan Utility
MF Scan Utility installation procedure

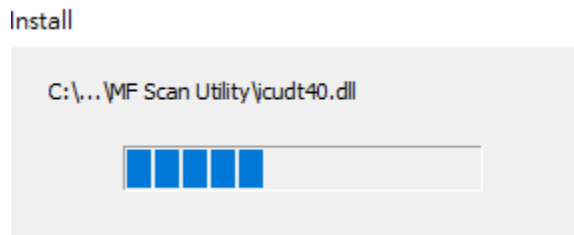
27. 執行檔案〔winmfscanutilityvxxxx.exe〕按「Next」
Run the file [winmfscanutilityvxxxx.exe] , click “Next”



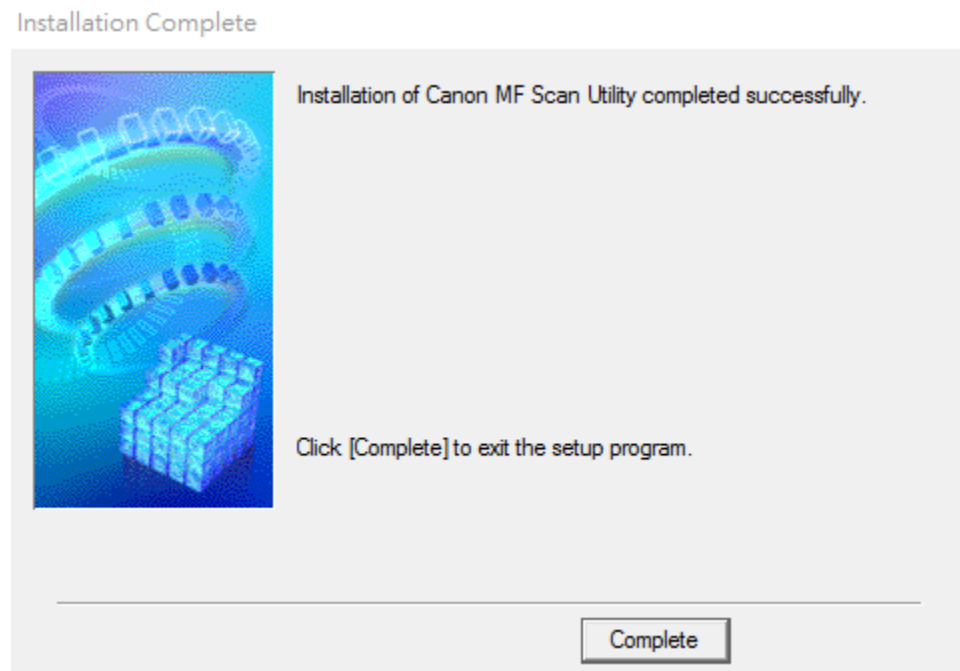
28. 按「Yes」
Click “Yes”



29. 等待安裝程序完成
Waiting for the installation progress



30. 按「Complete」完成安裝
Click "Complete" to finish installation



-完-
-End-