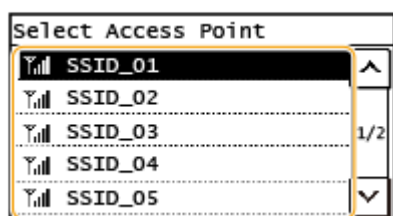


透過無線網路連接安裝 MF269dw 印表機的驅動程式步驟 (以 Win 10 作示範)
MF269dw printer driver Installation Guide for Windows via Wi-Fi connection (Win 10 as example)

先將打印機連接到網路，詳細可參考以下步驟

Connect printer to network first, please refer to following procedure

1. 開啟印表機
Turn on the printer
2. 在主畫面中點選「功能表」
Tap “Menu” in the Home Screen
3. 點選「網路設定」
Tap “Network Settings”
4. 點選「無線區域網路設定」
Tap “Wireless LAN Settings”
5. 點選 <SSID 設定>
Tap “SSID setting”
6. 點選 <選擇存取點>
Tap “Select Access Point”
7. 選擇無線區域網路路由器(SSID)
Select the wireless router (SSID)



8. 使用數字鍵輸入網路金鑰（路由器密碼），然後點選 <套用>
Enter the network key using the numeric keys, and tap “Apply”
9. 點選 <是>
Tap “Yes”
10. 設定完成時，會顯示「已連線」
Wait until message “Connected” is displayed
等待約 2 分鐘，直到本機的 IP 位址設定完成
Wait approximately 2 minutes until the IP address settings of the machine complete

下載及安裝步驟

Driver download and installation procedure

11. 按以下網址下載驅動程式：

如電腦使用 Windows 64 位元系統，請下載：

<https://support-hk.canon-asia.com/contents/HK/EN/0100973401.html>

如電腦使用 Windows 32 位元系統，請下載：

<https://support-hk.canon-asia.com/contents/HK/EN/0100973301.html>

Click the link(s) below to download the printer driver:

If computer is running Windows 64 bit system, please click the link below:

<https://support-hk.canon-asia.com/contents/HK/EN/0100973401.html>

If computer is running Windows 32 bit system, please click the link below:

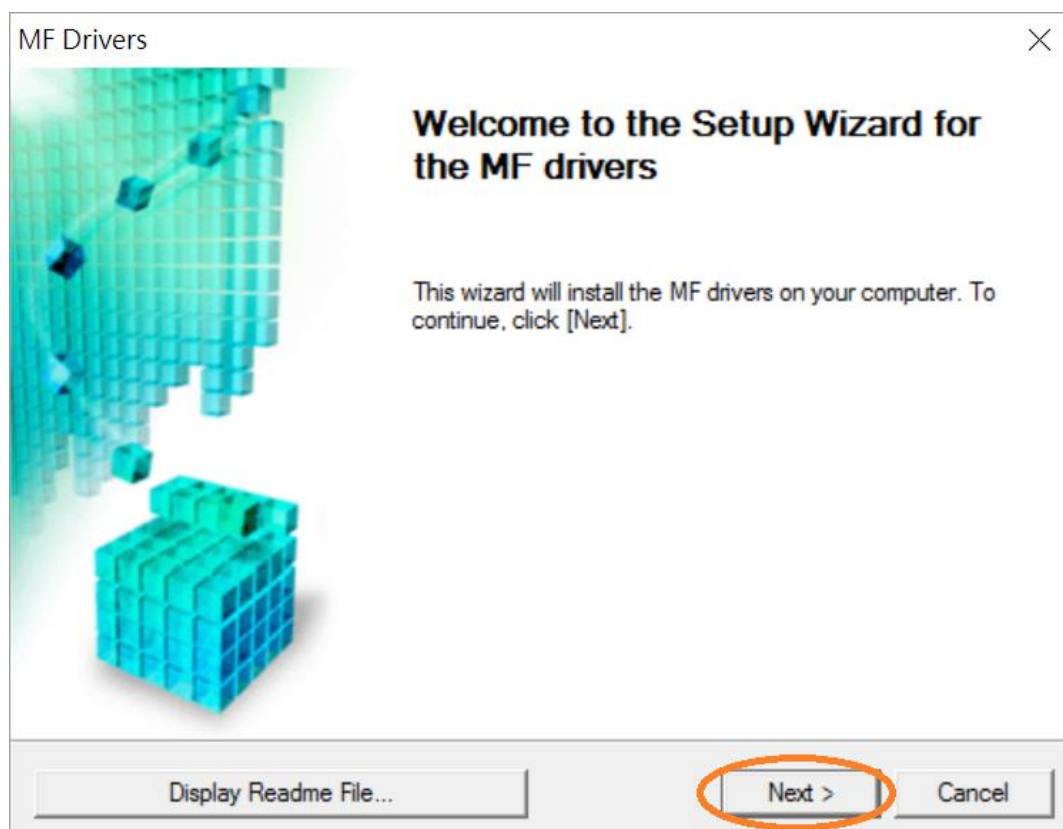
<https://support-hk.canon-asia.com/contents/HK/EN/0100973301.html>

12. 下載完成後，打開驅動程式 安裝檔案

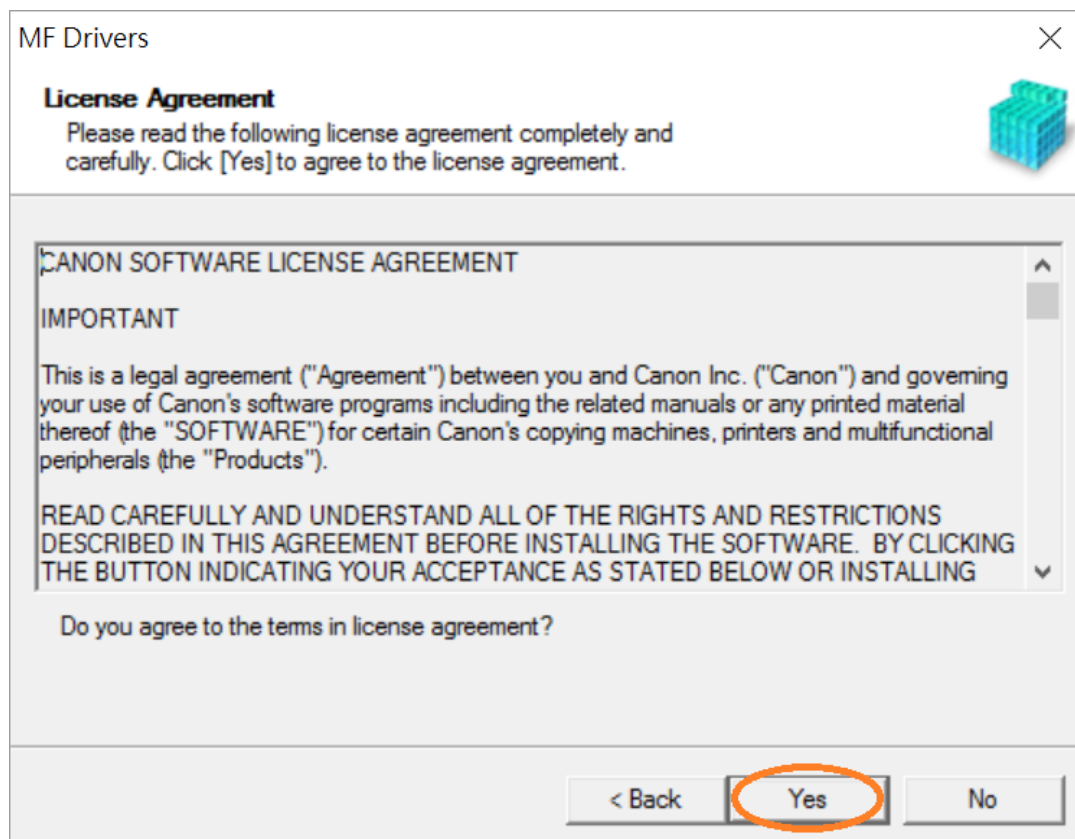
Open driver installation file after downloaded

13. 按「Next >」

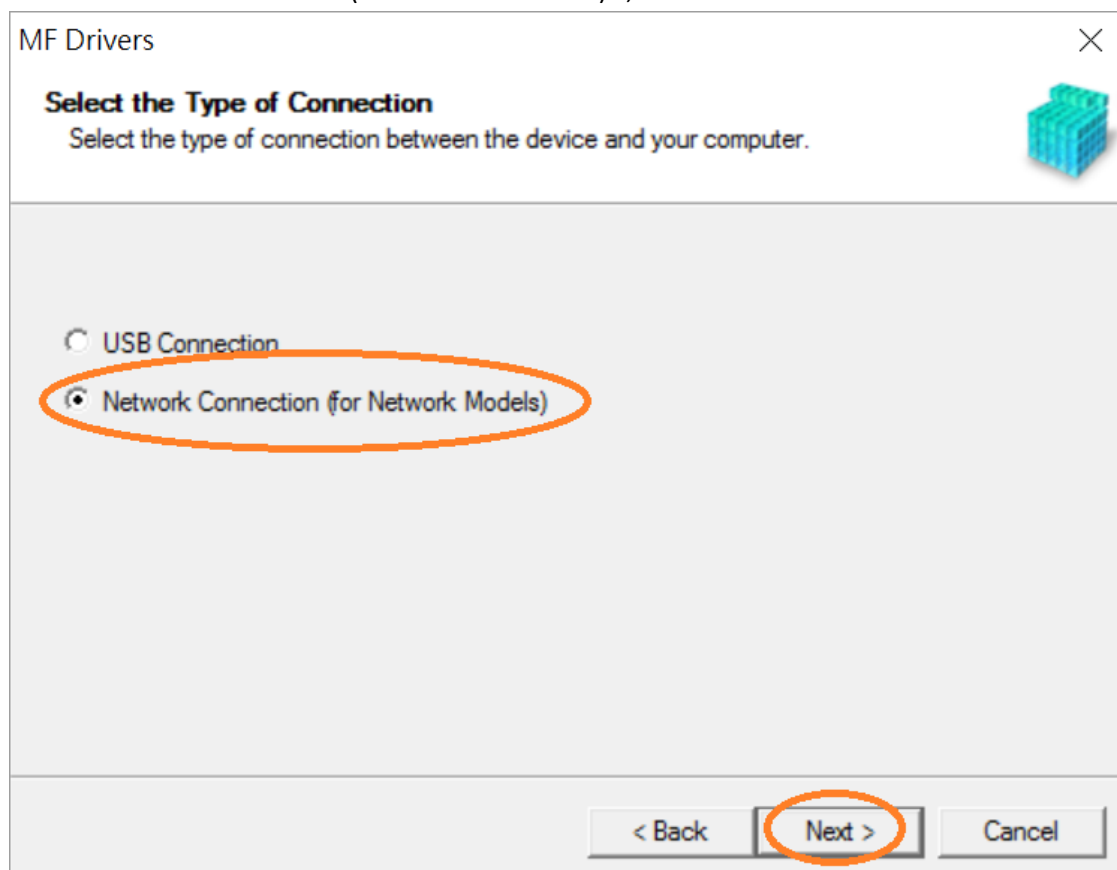
Click "Next >"



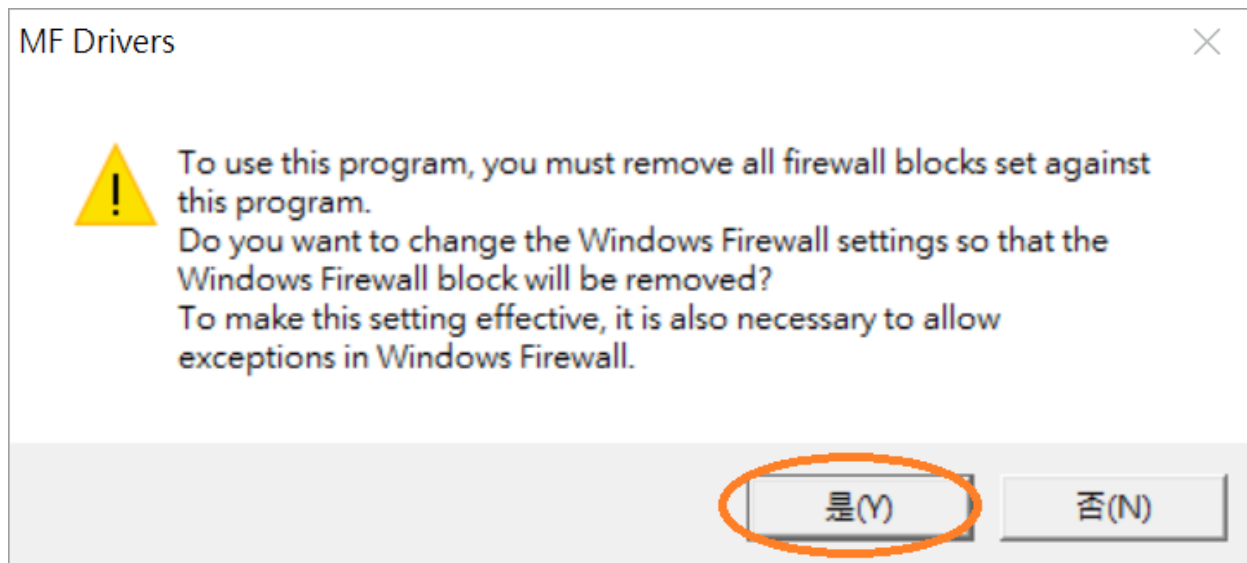
14. 按「Yes」
Click "Yes"



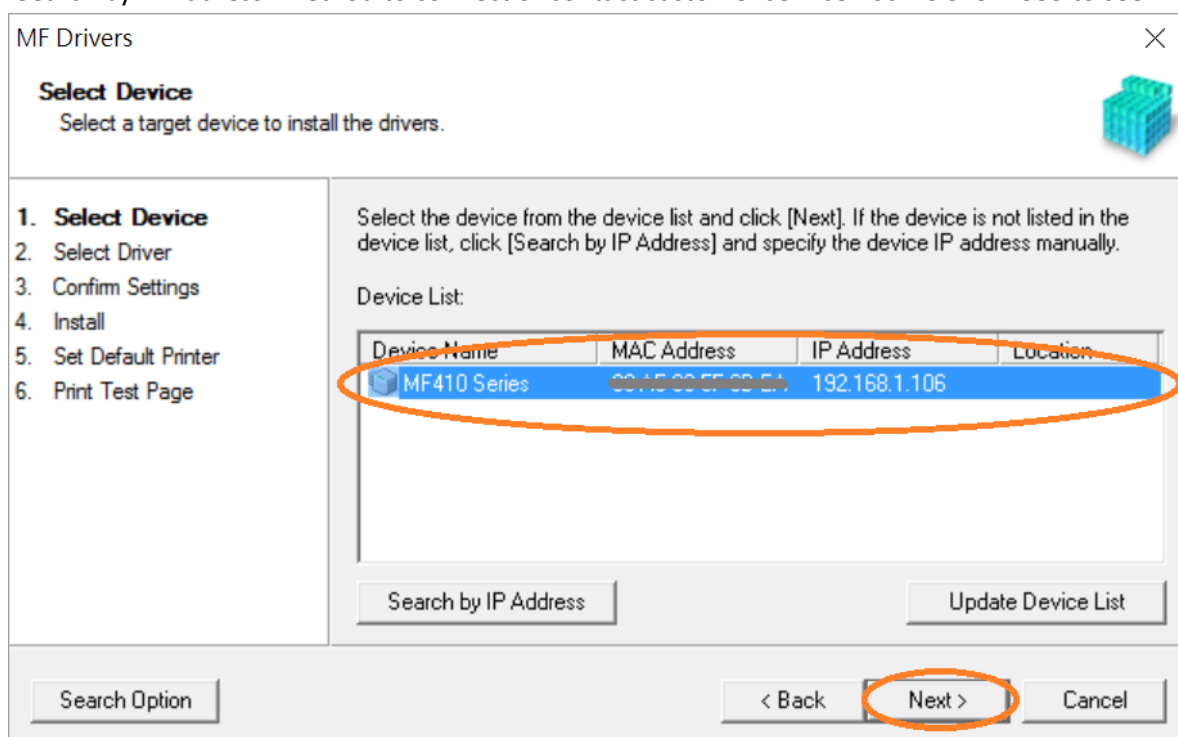
15. 選擇「Network Connection (for Network Models)」，按「Next >」
Select "Network Connection (for Network Models)", click "Next >"



16. 按「是」
Click "Yes"

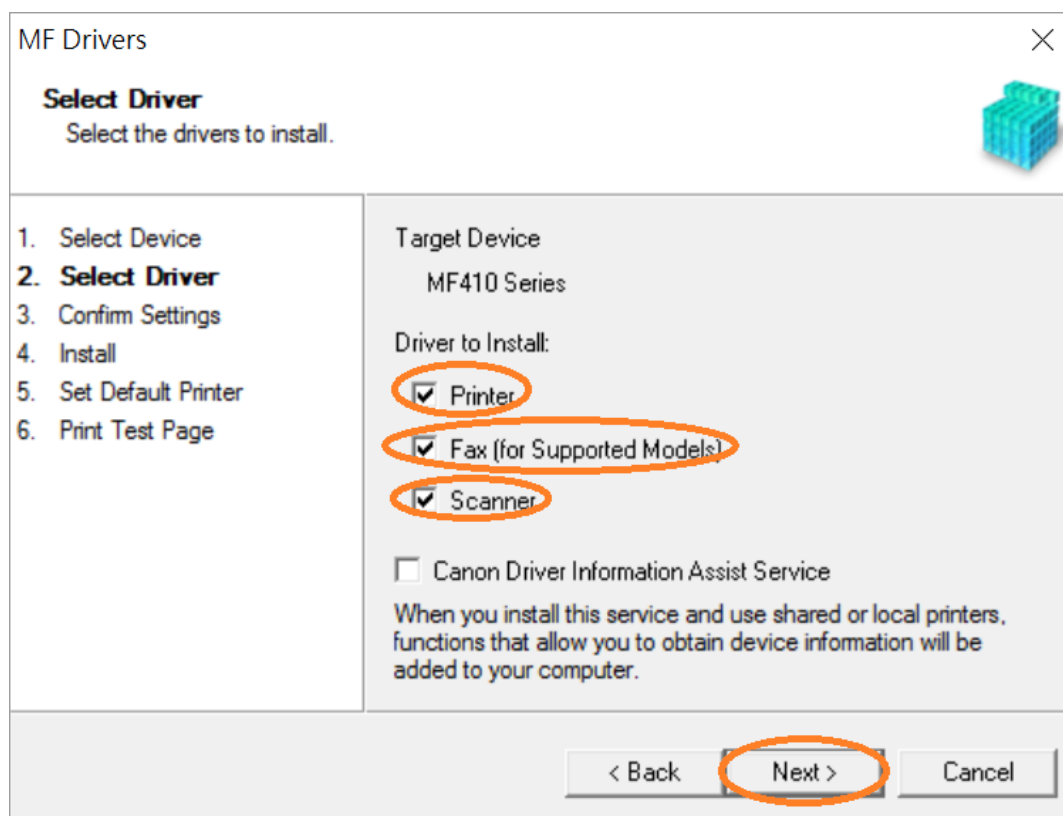


17. 選擇「MF260 Series」（以 MF410 Series 為例子），按「Next >」（如清單沒有印表機，請選「Search by IP Address」方法連接或聯絡客戶服務熱線 31912333 尋求支援）
Select "MF260 Series" (MF410 Series as example), click "Next >" (If there is no printer on the list, please select "Search by IP Address" method to connect or contact customer service hotline 31912333 to seek for support)



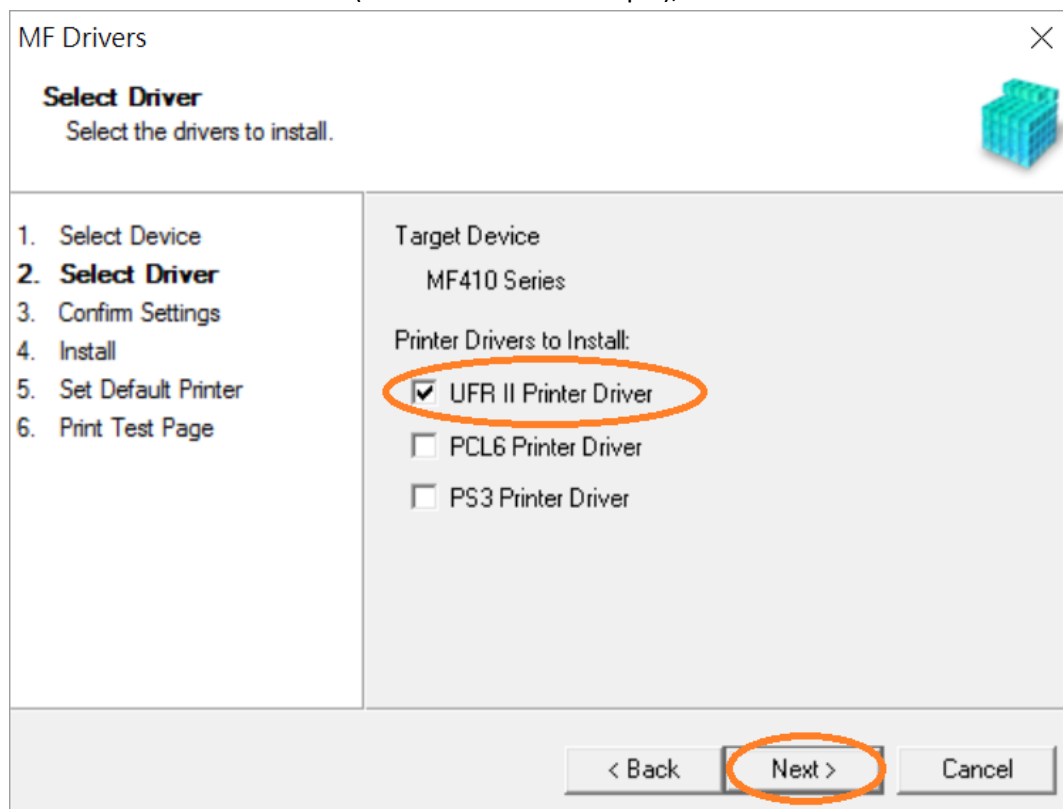
18. 確認已剔選「Printer」「Fax (for Supported Models)」「Scanner」（以 MF410 Series 為例子），按「Next >」

Confirm the “Printer” “Fax for Supported Models” “Scanner” box is checked(MF410 Series as example), click “Next >”



19. 選擇「UFR II Printer Driver」（以 MF410 Series 為例子），按「Next >」

Select “UFR II Printer Driver” (MF410 Series as example), click “Next >”



20. 按「Next >」（以 MF410 Series 為例子）

Click “Next >” (MF410 Series as example)

MF Drivers

Confirm Settings
Confirm the following setting details.

1. Select Device
2. Select Driver
3. Confirm Settings
4. Install
5. Set Default Printer
6. Print Test Page

You can change the printer name. If you specify this printer as a shared printer, you can specify the shared printer name and set an additional driver (alternate driver). Confirm the settings, and then click [Next].

Printer

Port: CNMFNP_00A0000F000E
Driver: Canon MF410 Series UFR II
Printer Name: Canon MF410 Series UFR II

☐ Use as Shared Printer
Shared Name:

Drivers to Add...

Current Device: 1
Number of Devices to Set: 2

< Back **Next >** Cancel

21. 按「Next >」（以 MF410 Series 為例子）

Click “Next >” (MF410 Series as example)

MF Drivers

Confirm Settings
Confirm the following setting details.

1. Select Device
2. Select Driver
3. Confirm Settings
4. Install
5. Set Default Printer
6. Print Test Page

You can change the fax name. If you specify this fax as a shared fax, you can specify the shared fax name and set an additional driver (alternate driver). Confirm the settings, and then click [Next].

Fax

Port: CNMFNP_00A0000F000E
Driver: Canon Generic FAX Driver (FAX)
Fax Name: Canon MF410 Series (FAX)

☐ Use as Shared Fax
Shared Name:

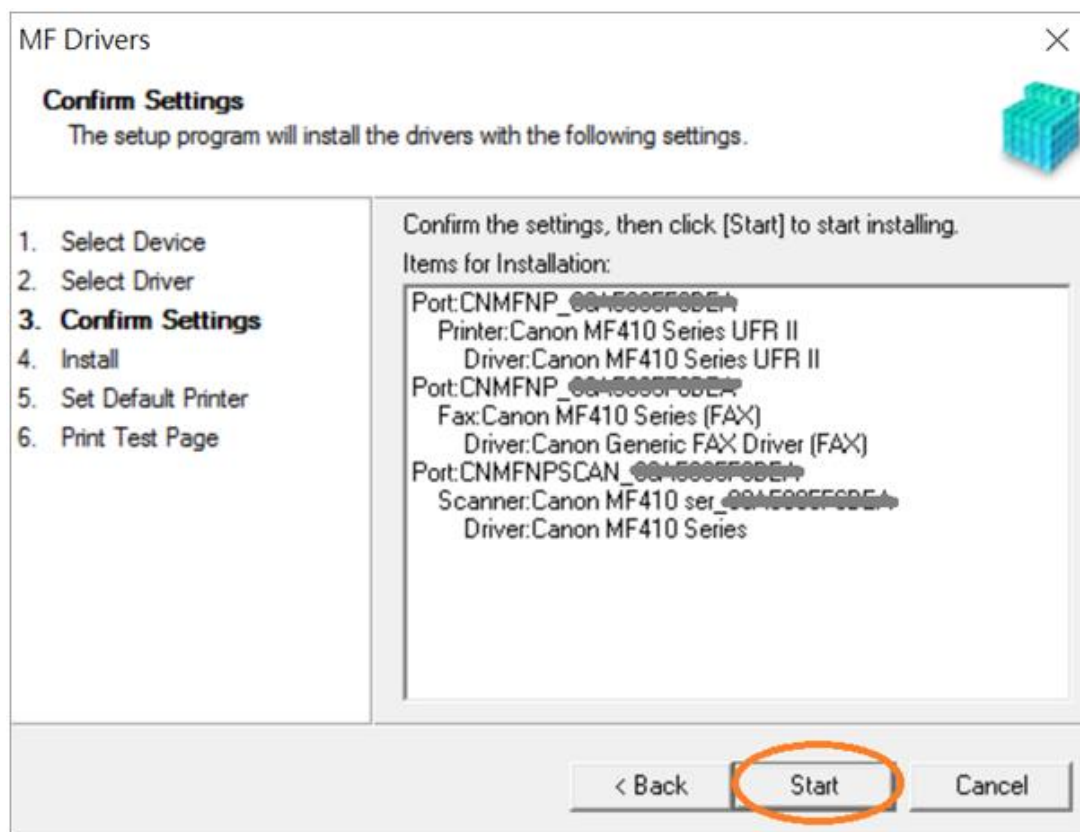
Drivers to Add...

Current Device: 2
Number of Devices to Set: 2

< Back **Next >** Cancel

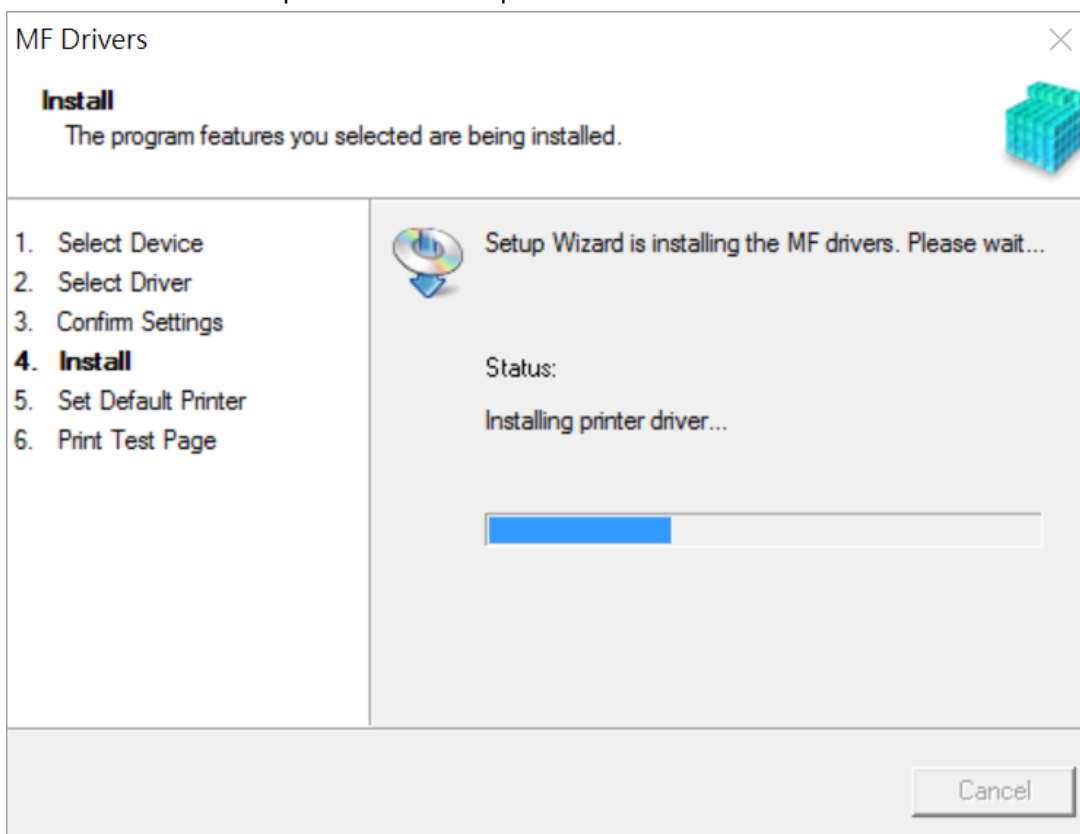
22. 按「Start」（以 MF410 Series 為例子）

Click "Start>" (MF410 Series as example)

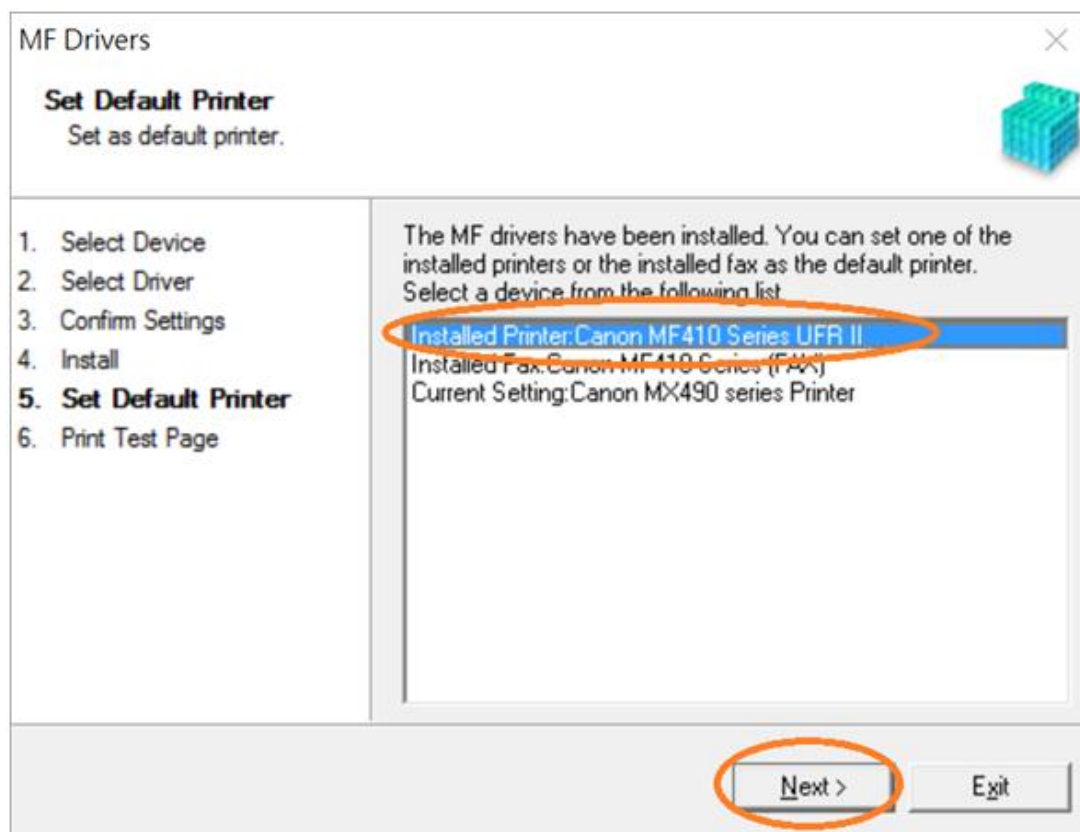


23. 請等待安裝精靈成完安裝

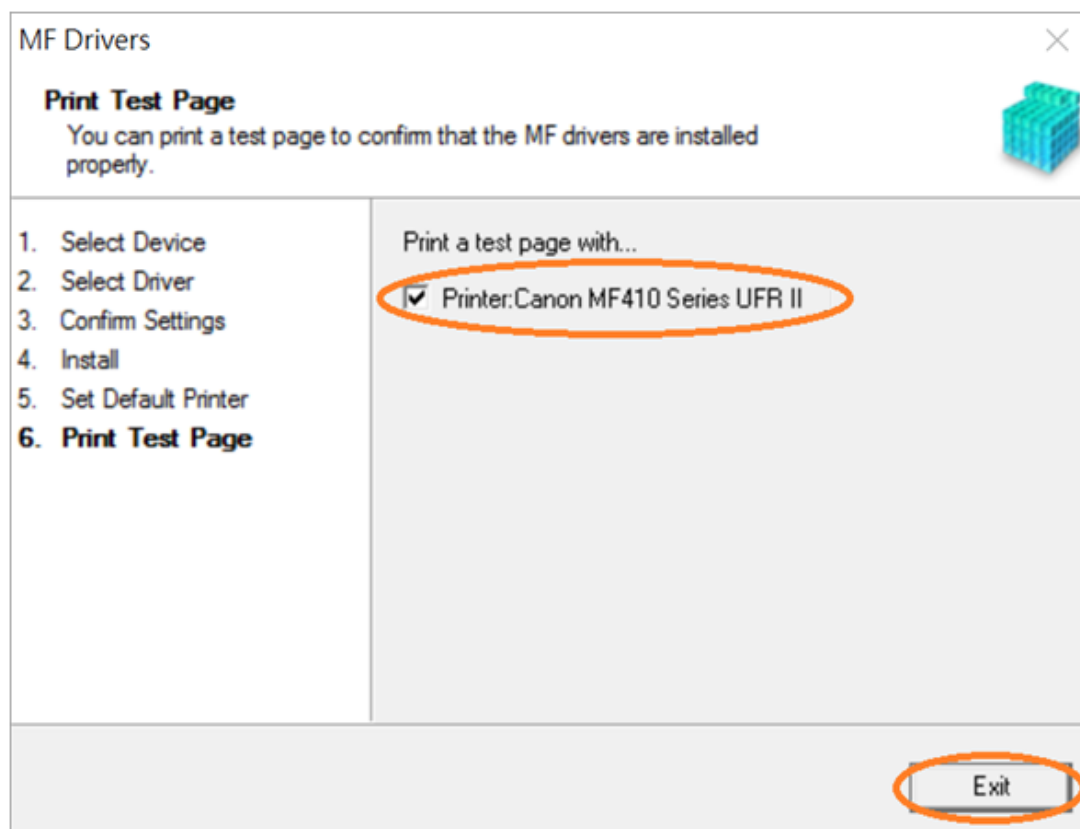
Please wait for the setup wizard to accomplish installation



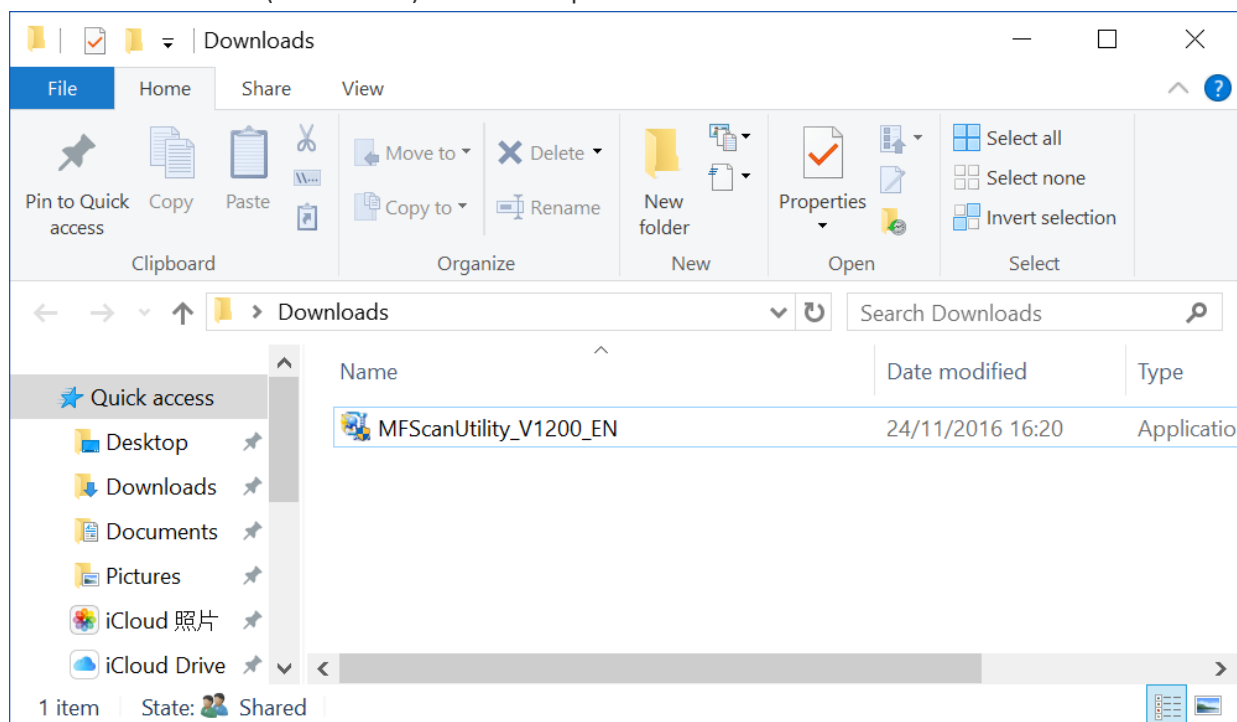
24. 選擇「Installed Printer: Canon MF260 Series UFR II」（以 MF410 Series 為例子），按「Next >」
Select "Installed Printer: Canon MF260 Series UFR II" (MF410 Series as example), click "Next >"



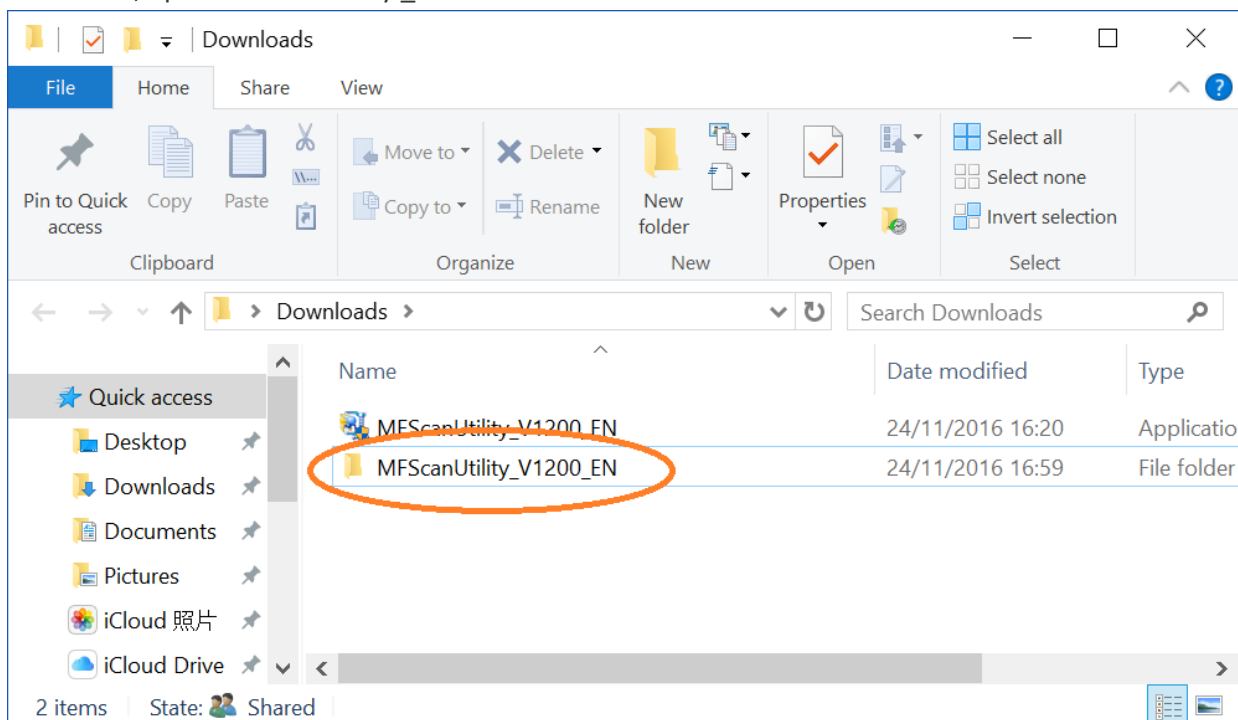
25. 可剔選「Printer: Canon MF260 Series UFR II」以（MF410 Series 為例子）進行列印測試頁，按「Exit」
Can check the box at "Printer: Canon MF260 Series UFR II" (MF410 Series as example) to print a test page, click "Exit"



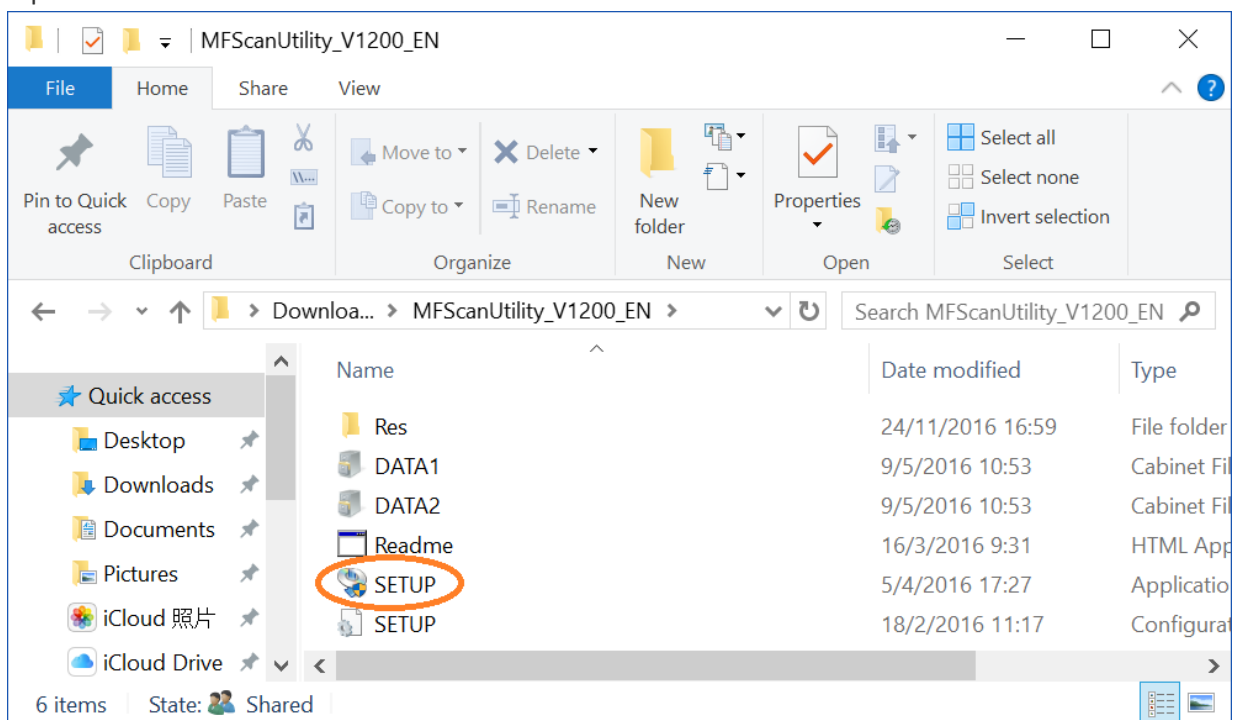
26. 到佳能網站 <https://support-hk.canon-asia.com/contents/HK/EN/0200563204.html> 下載掃描軟件 MF Scan Utility
Go to <https://support-hk.canon-asia.com/contents/HK/EN/0200563204.html> to download the scanner software MF Scan Utility
27. 下載的文件以自解壓縮檔檔案（.exe 格式）保存在指定的文件夾中
The self extractor file (.exe format) is saved to specified folder



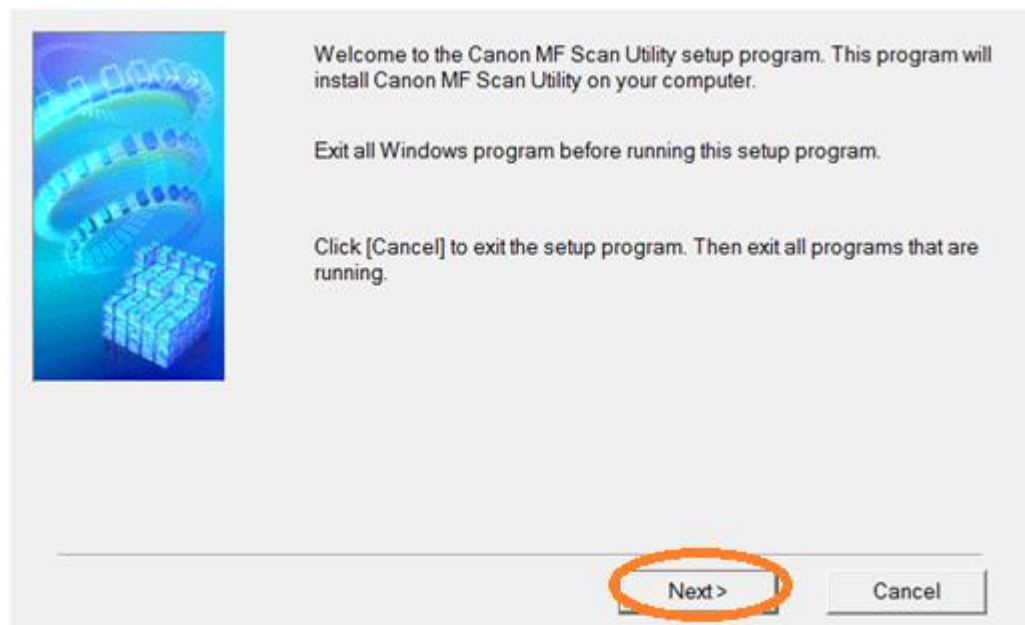
28. 打開「MFScanUtility_***.exe」檔案。將在同一文件夾中創建新文件夾，如打開文件解壓縮時出現「使用者帳戶控制」選項，按「是」，打開「MFScanUtility_***」文件夾
Open “MFScanUtility_***.exe” file, a new folder will be created. If “User Account Control” window pops up, click “Yes”, open “MFScanUtility_***” file folder



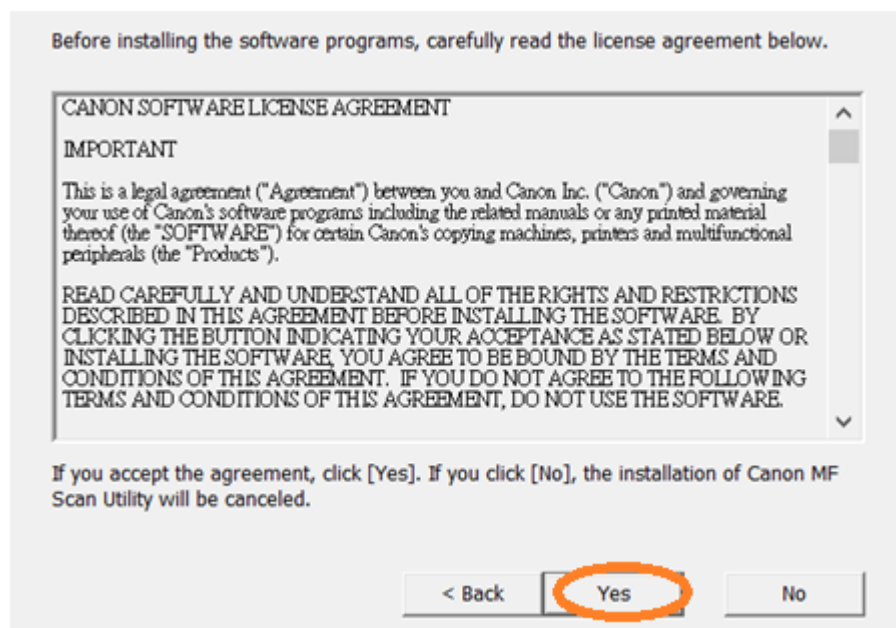
29. 開啟「SETUP.exe」檔案
Open “SETUP.exe” file



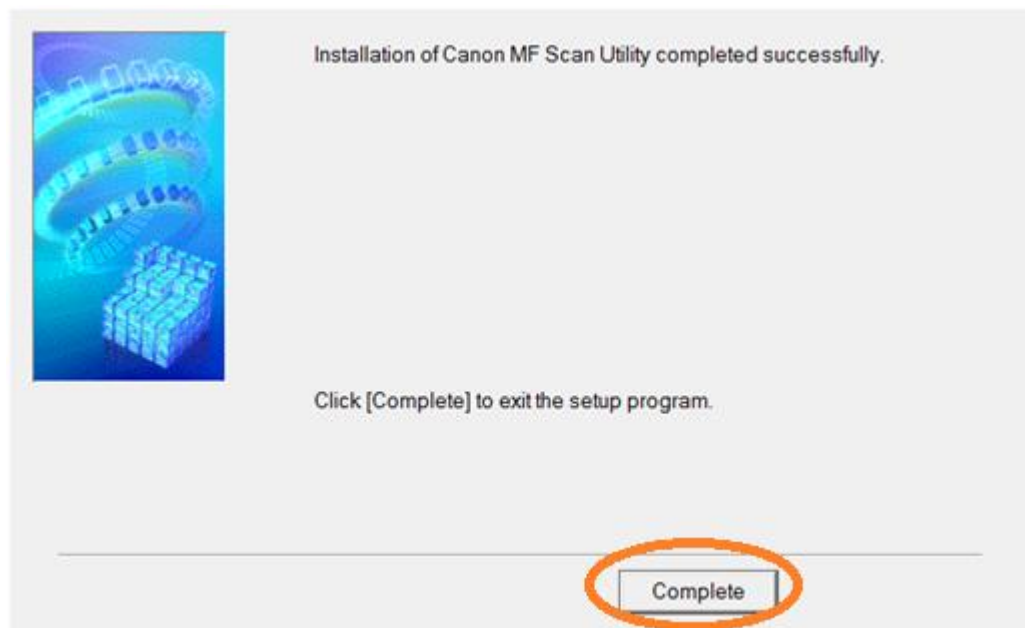
30. 按「Next >」
Click "Next >"



31. 按「Yes」
Click "Yes"



32. 按「Complete」
Click “Complete”



-完-
-End-