

透過 USB 連接安裝 MF269dw 印表機的驅動程式步驟 (以 Win 10 作示範)

MF269dw printer driver Installation Guide for Windows via USB connection (Win 10 as example)

****注意: 安裝驅動程式前請勿接駁 USB 線，以免系統發生錯誤****

**** Please don't plug the USB cable until the driver asked to do so****

1. 按以下網址下載驅動程式：

如電腦使用 Windows 64 位元系統，請下載：

<https://support-hk.canon-asia.com/contents/HK/EN/0100973401.html>

如電腦使用 Windows 32 位元系統，請下載：

<https://support-hk.canon-asia.com/contents/HK/EN/0100973301.html>

Click the link(s) below to download the printer driver:

If computer is running Windows 64 bit system, please click the link below:

<https://support-hk.canon-asia.com/contents/HK/EN/0100973401.html>

If computer is running Windows 32 bit system, please click the link below:

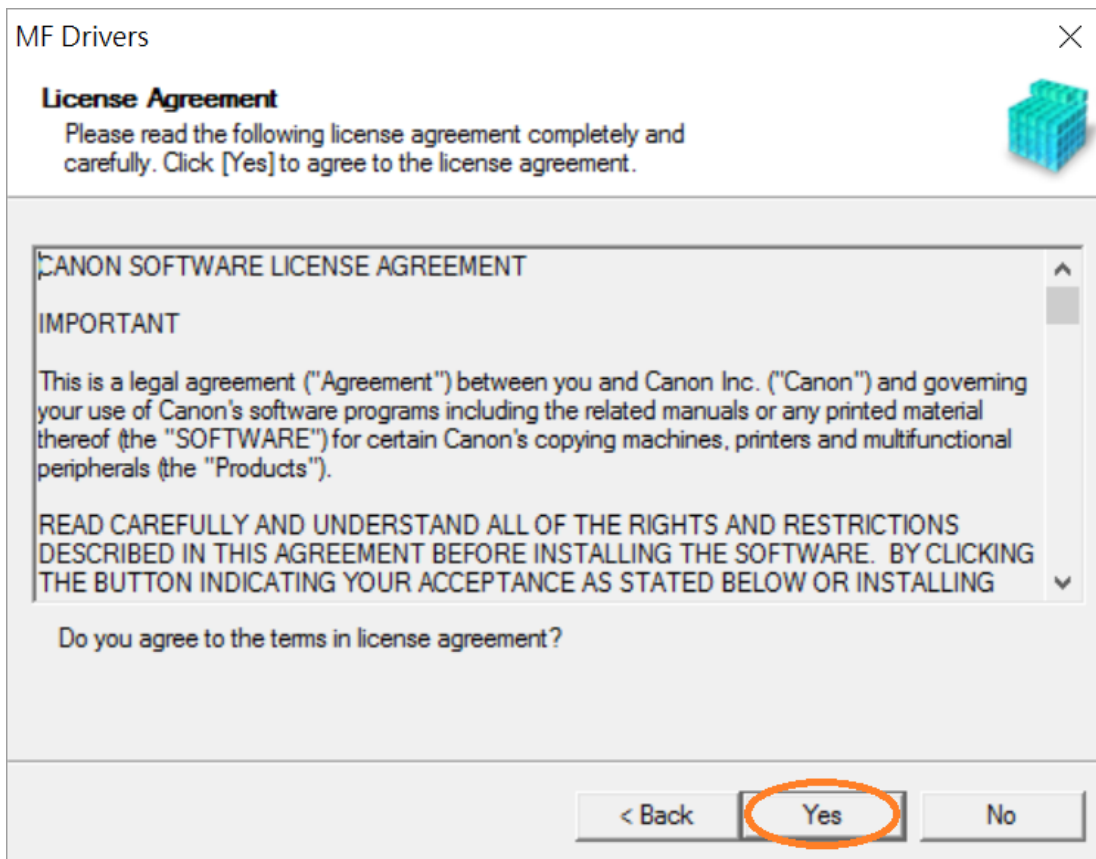
<https://support-hk.canon-asia.com/contents/HK/EN/0100973301.html>

2. 按「Next >」

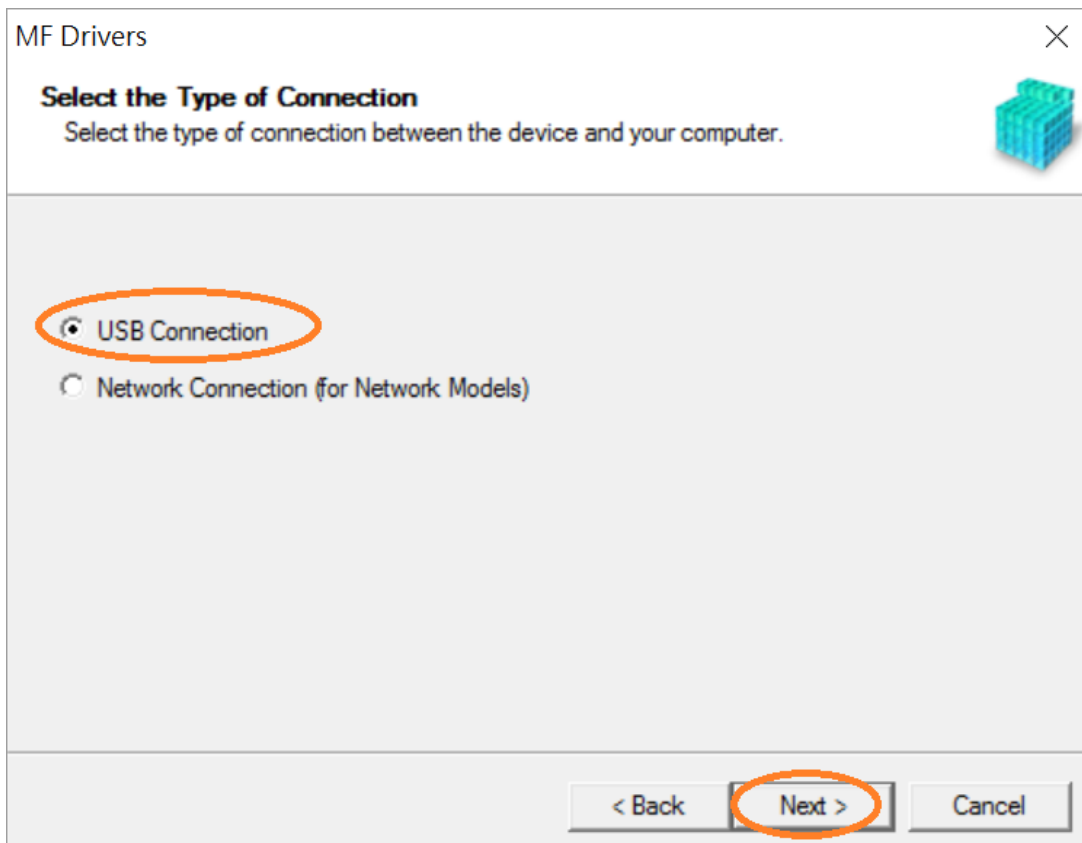
Click "Next >"



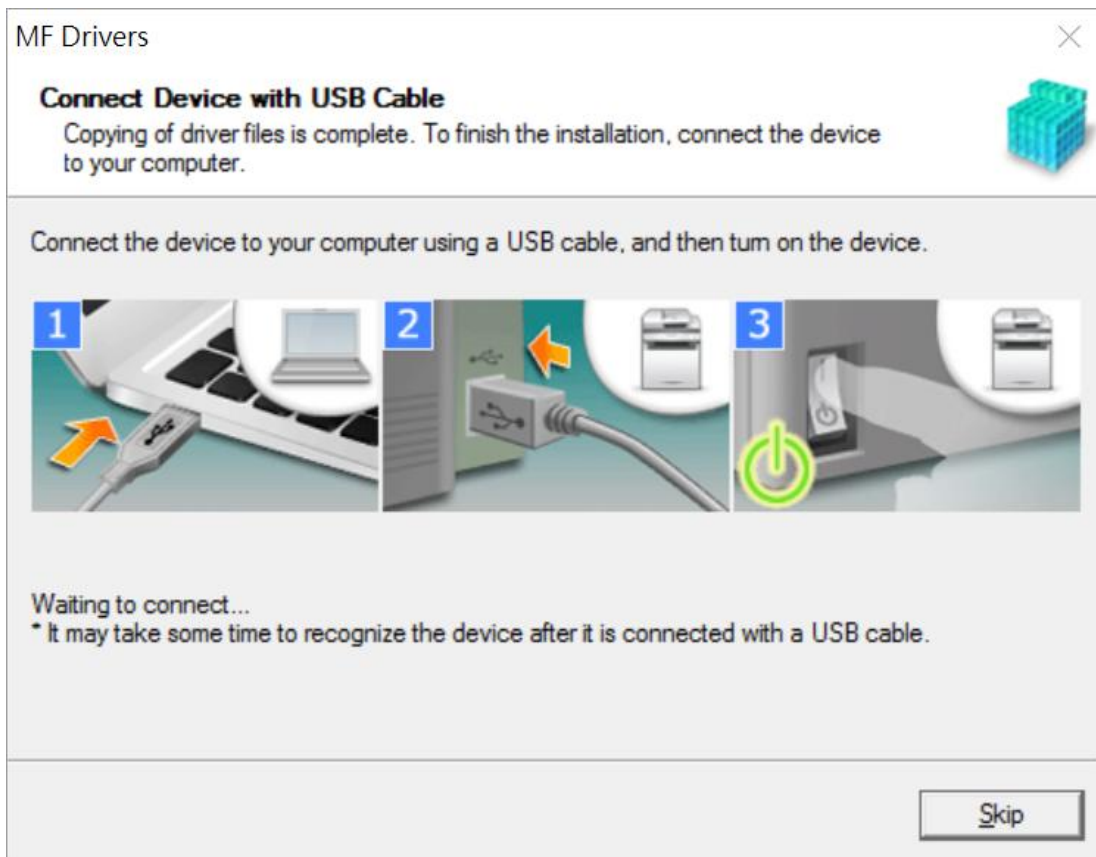
3. 按「Yes」
Click "Yes"



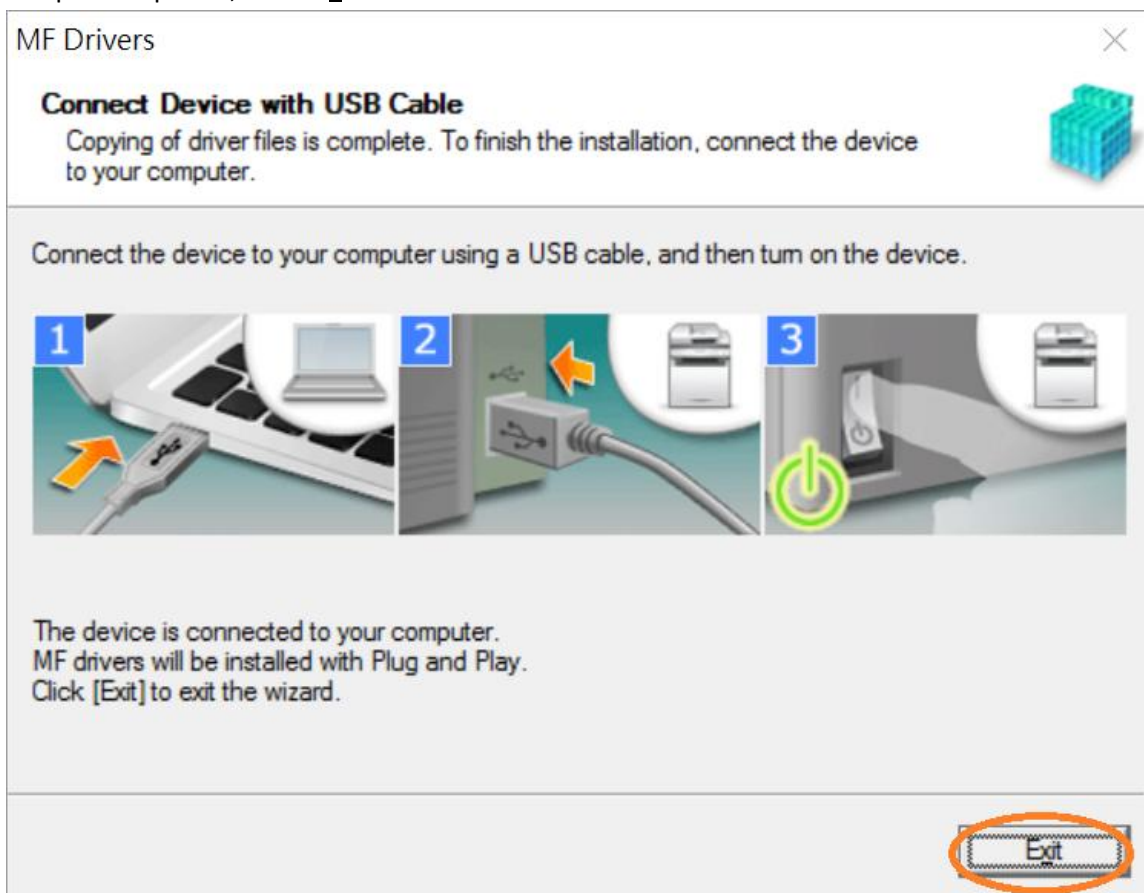
4. 選擇「USB Connection」，按「Next >」
Select "USB Connection", click "Next >"



5. 以 USB 線接駁打印機及電腦，然後開啟打印機
Connect printer and computer with the USB cable, and then turn on the printer



6. 安裝完成，按「Exit」
Setup is completed, click "Exit"

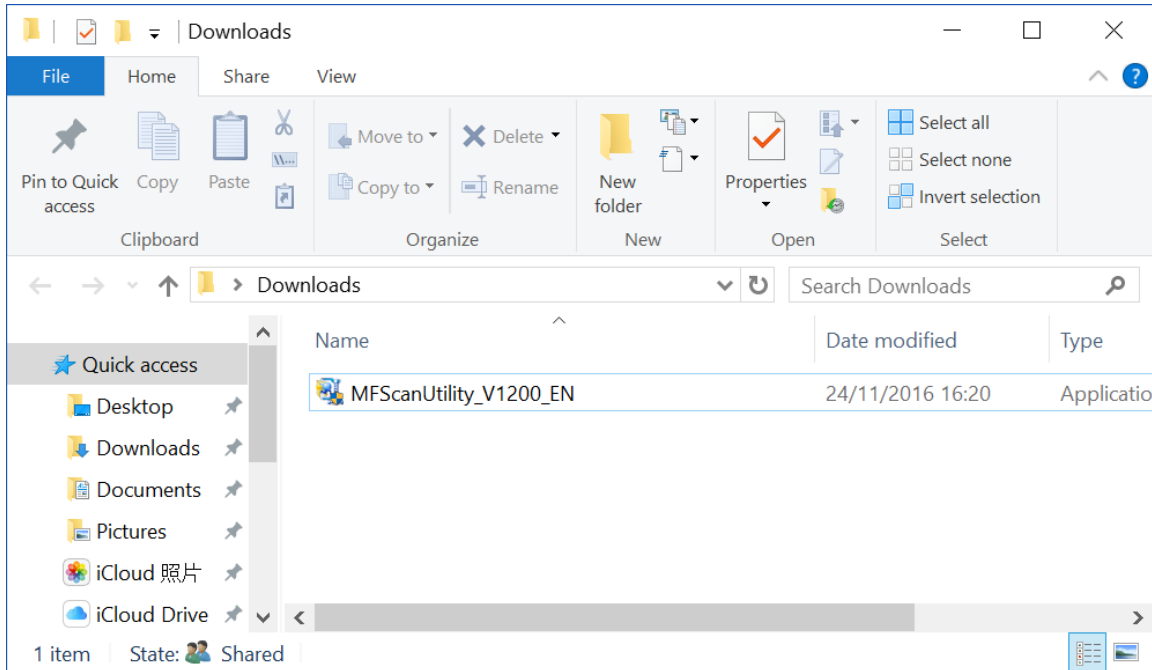


7. 到佳能網站 <https://support-hk.canon-asia.com/contents/HK/EN/0200563204.html> 下載掃描軟件 MF Scan Utility

Go to <https://support-hk.canon-asia.com/contents/HK/EN/0200563204.html> to download the scanner software MF Scan Utility

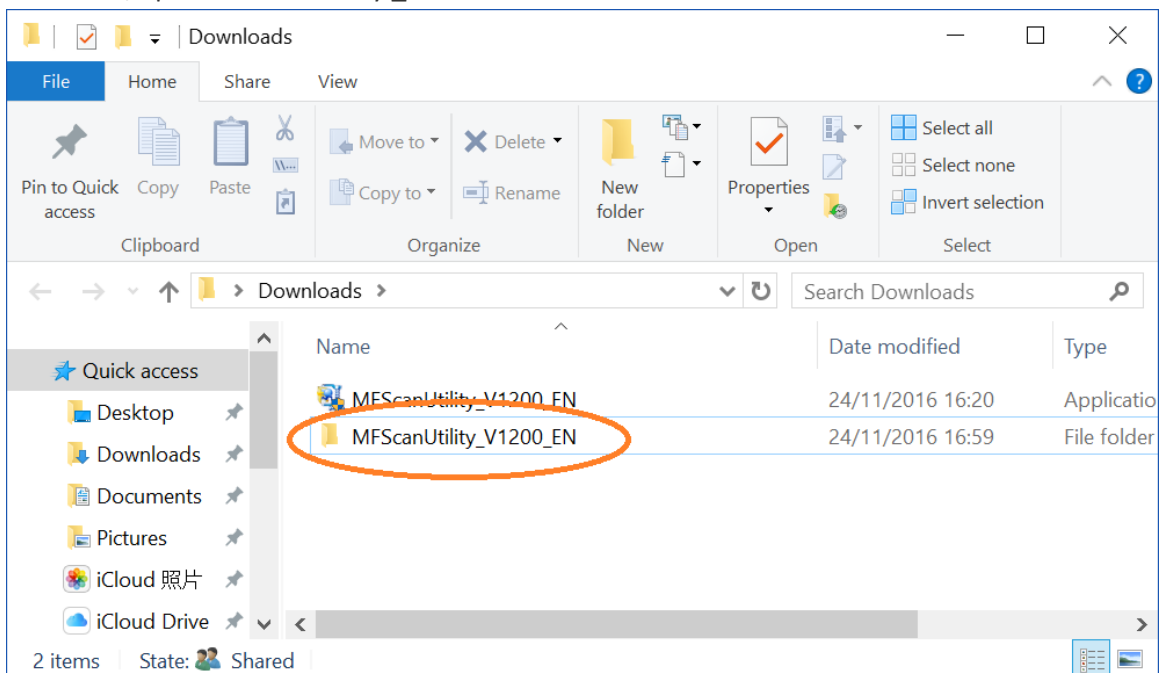
8. 下載的文件以自解壓縮檔檔案（.exe 格式）保存在指定的文件夾中

The self extractor file (.exe format) is saved to specified folder

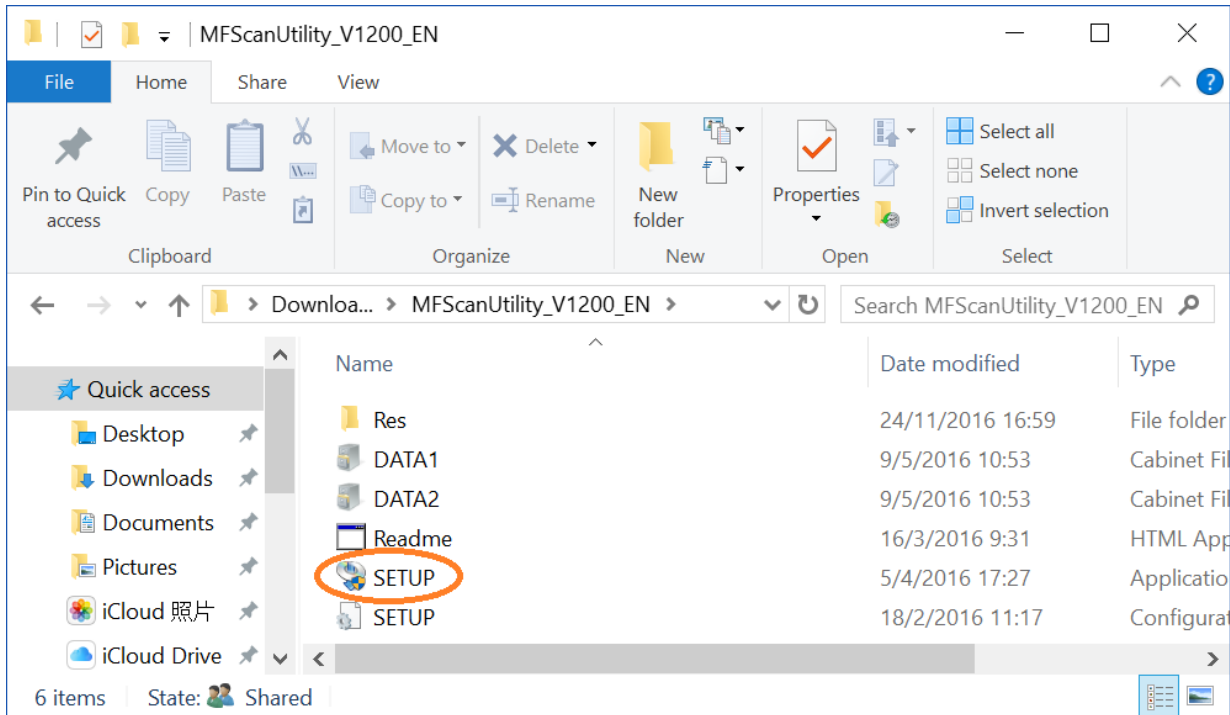


9. 打開「MFScanUtility_***.exe」檔案。將在同一文件夾中創建新文件夾，如打開文件解壓縮時出現「使用者帳戶控制」選項，按「是」，打開「MFScanUtility_***」文件夾

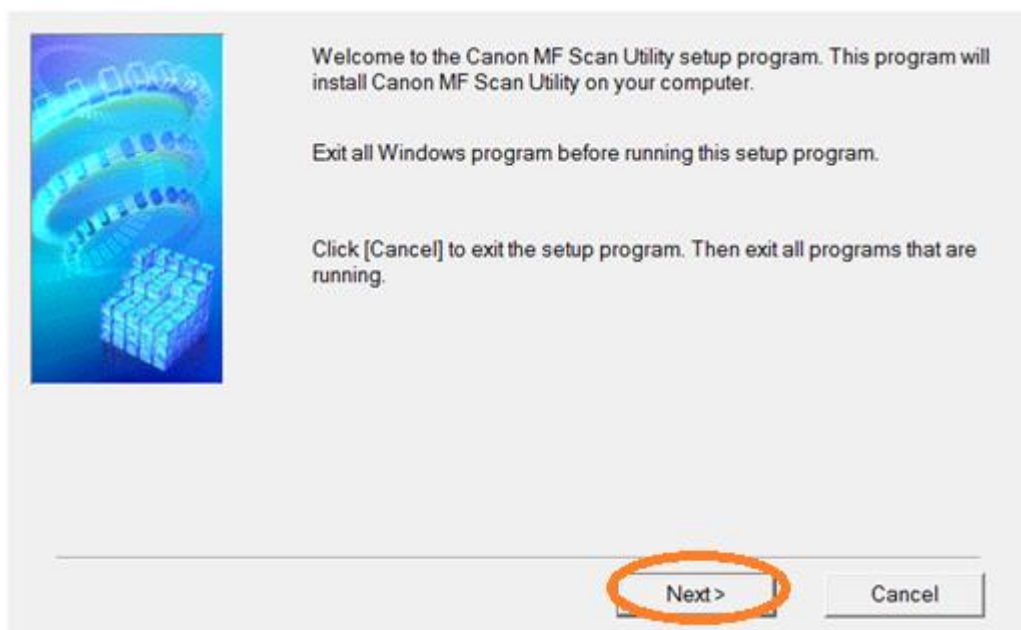
Open "MFScanUtility_***.exe" file, a new folder will be created. If "User Account Control" window pops up, click "Yes", open "MFScanUtility_***" file folder



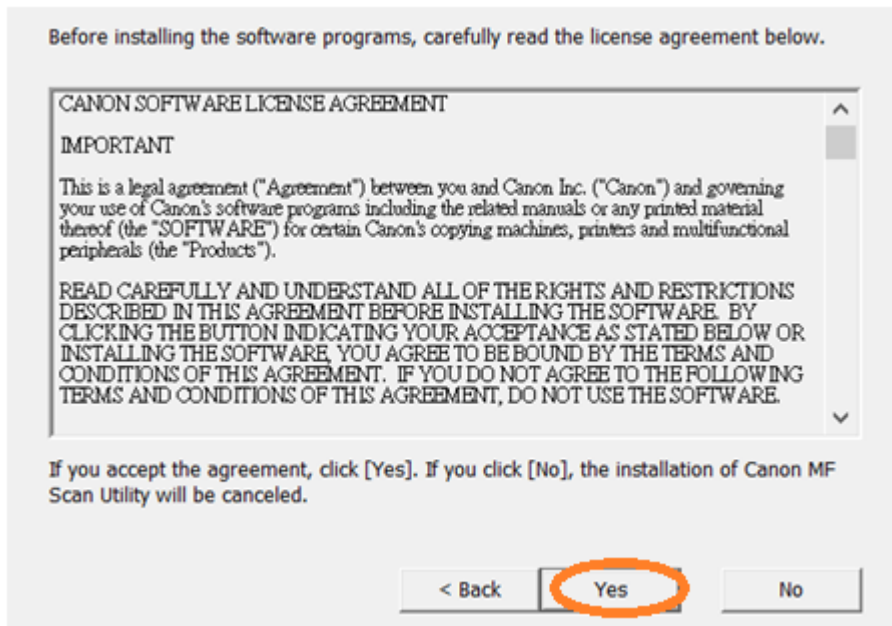
10. 開啓「SETUP.exe」檔案
Open "SETUP.exe" file



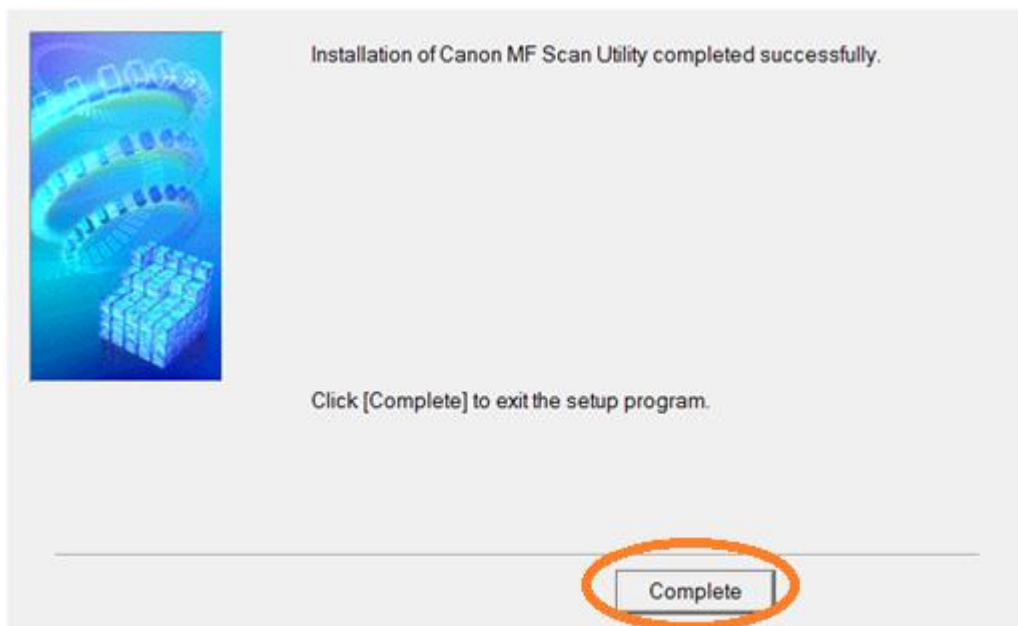
15. 按「Next >」
Click "Next >"



16. 按「Yes」
Click “Yes”



17. 按「Complete」
Click “Complete”



-完-
-End-