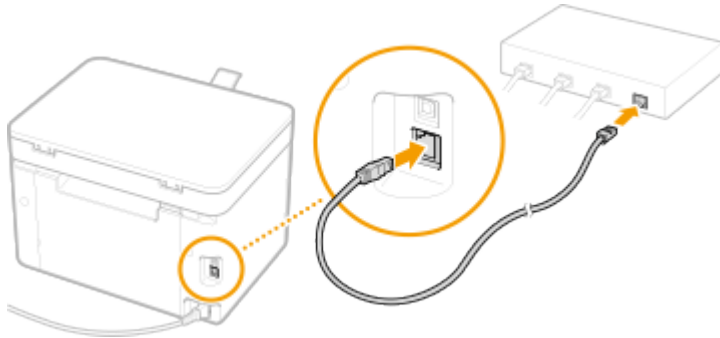


透過乙太網路連接安裝 MF113w 印表機的驅動程式步驟 (以 Win 10 作示範)  
MF113w printer driver Installation Guide for Windows via LAN connection (Win 10 as example)

**\*\*使用乙太網路連接線接駁到印表機及開啟印表機\*\***

**\*\*Connect the machine to a router by using a LAN cable and turn on computer\*\***



先將打印機連接到網路，詳細可參考以下步驟

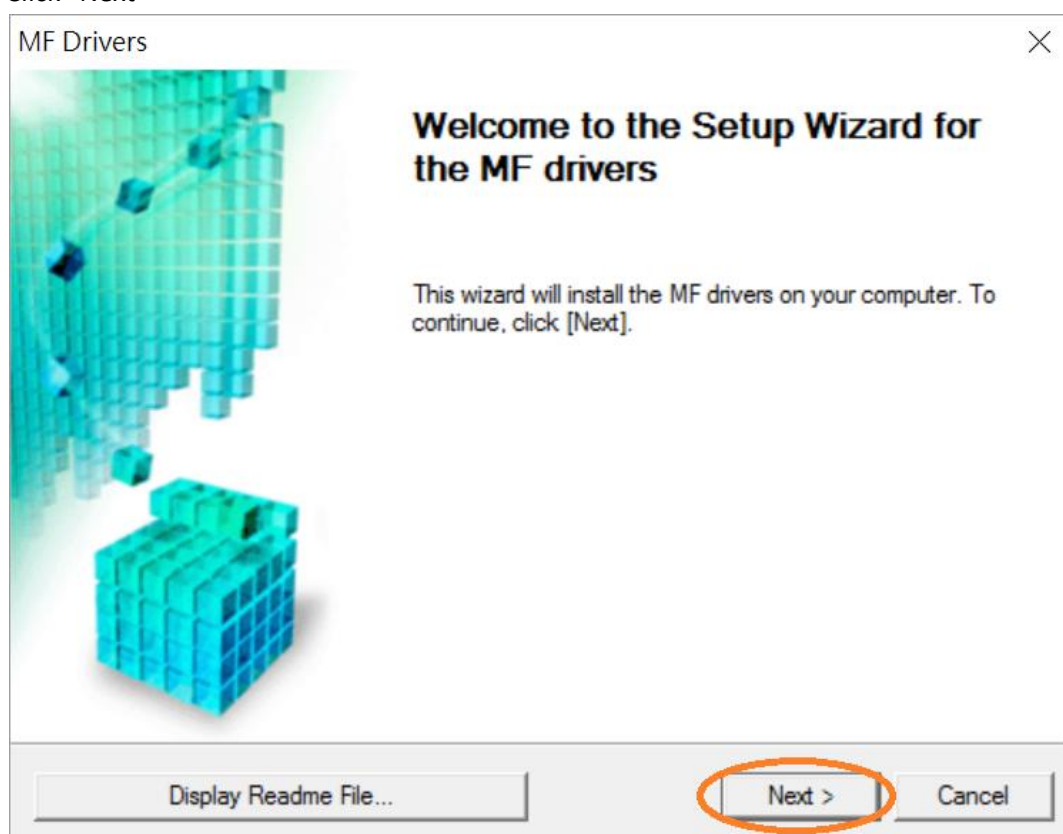
Connect printer to network first, please refer to following procedure

1. 開啟印表機  
Turn on the printer
2. 在主畫面中點選「功能表」  
Tap “Menu” in the Home Screen
3. 點選「網路設定」  
Tap “Network Settings”
4. 點選「有線 / 無線區域網路」  
Tap “Select Wired / Wireless LAN”
5. 點選 <有線區域網路>  
Tap “Wired LAN”

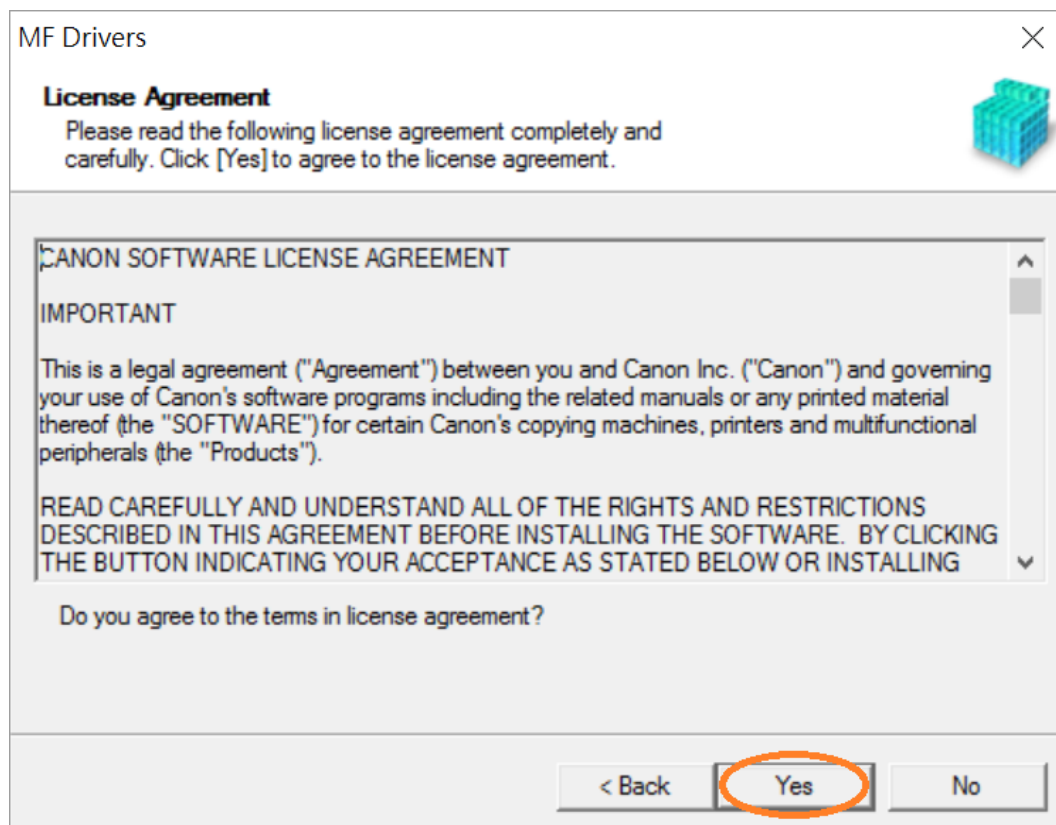
## 下載及安裝步驟

### Driver download and installation procedure

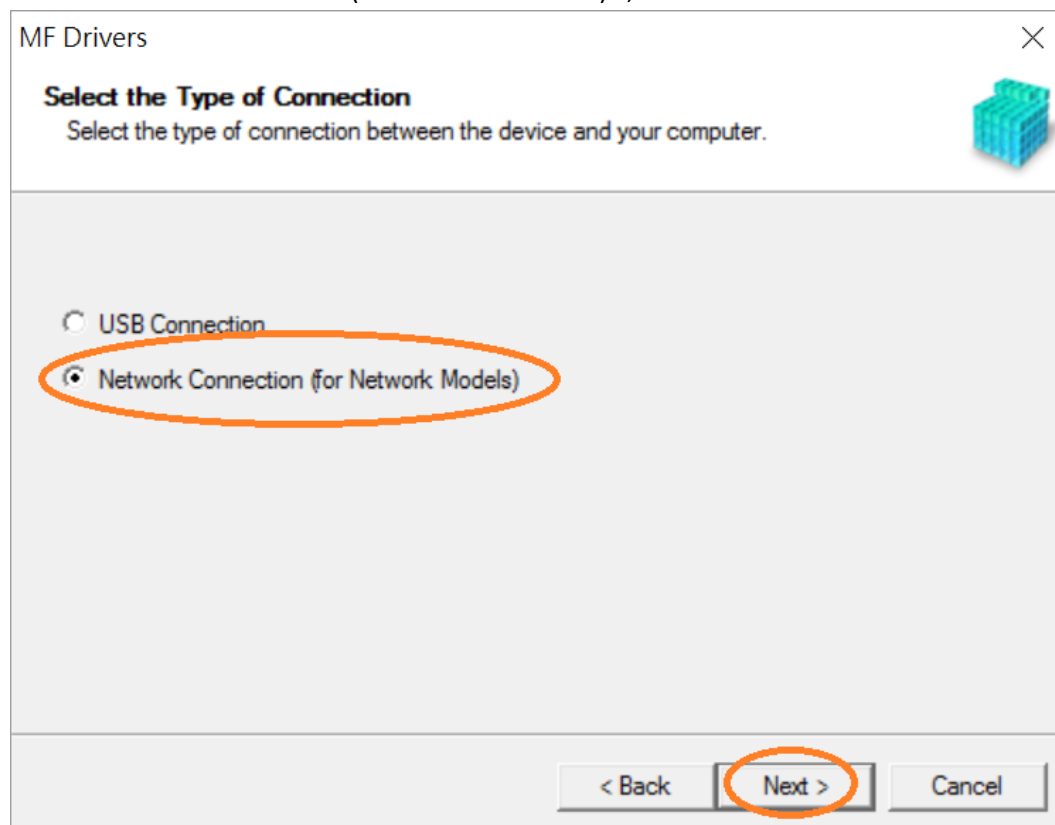
6. 到佳能網站<https://hk.canon/en/support/imageCLASS%20MF113w/model>，下載印表機的驅動程式  
Go to: <https://hk.canon/en/support/imageCLASS%20MF113w/model>, download the printer driver
7. 選擇並下載以下檔案  
Choose and download below files:
  - 打印機驅動程式 / Printer Driver  
[\[Windows xxbit\] MF113w/MF112/MF913w/MF912 MFDivers \(UFR II / ScanGear\)](#)
  - 掃描器軟件 / Scanning software  
[\[Windows 32bit & 64bit\] MF Scan Utility Ver.x.x.x.x](#)
8. 下載完成後，打開驅動程式 安裝檔案「MF110MF910MFDriverVxxxWxxukEN.exe」  
Open driver installation file “MF110MF910MFDriverVxxxWxxukEN.exe” after downloaded
9. 按「Next >」  
Click “Next >”



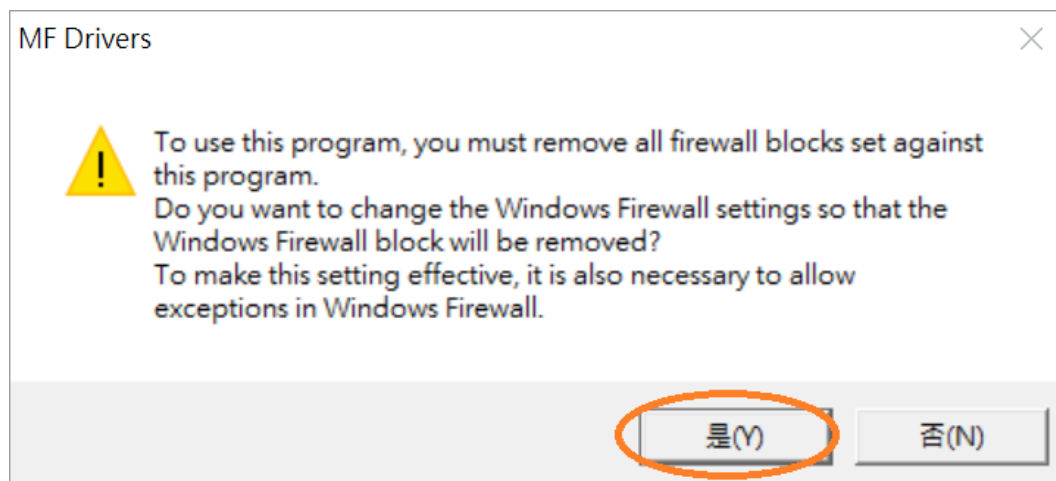
10. 按「Yes」  
Click “Yes”



11. 選擇「Network Connection (for Network Models)」，按「Next >」  
Select “Network Connection (for Network Models)” , click “Next >”

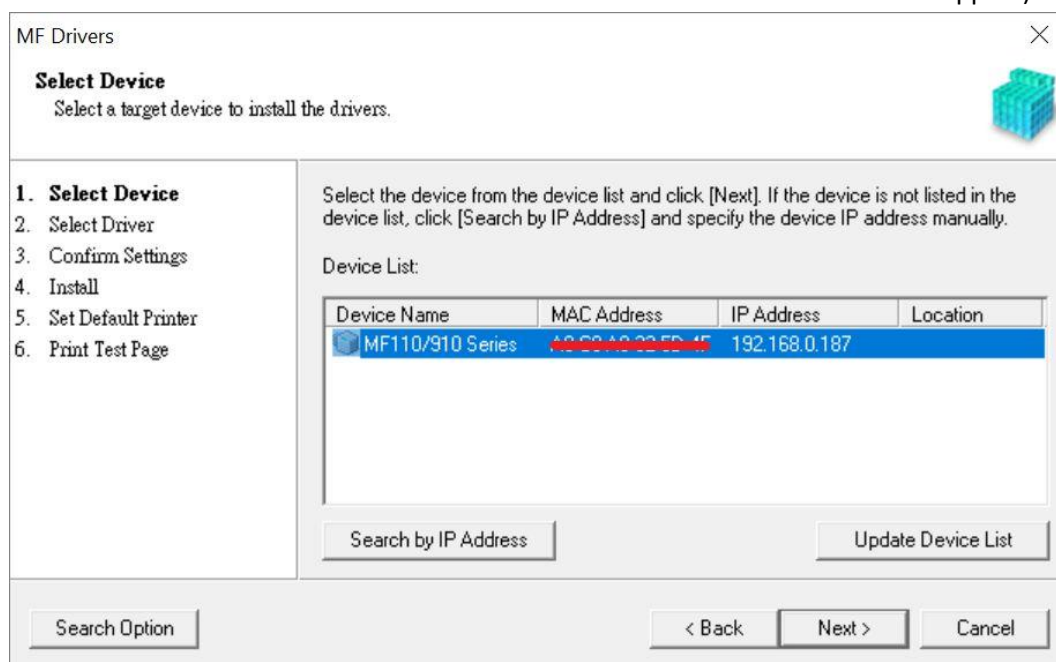


12. 按「是」  
Click "Yes"

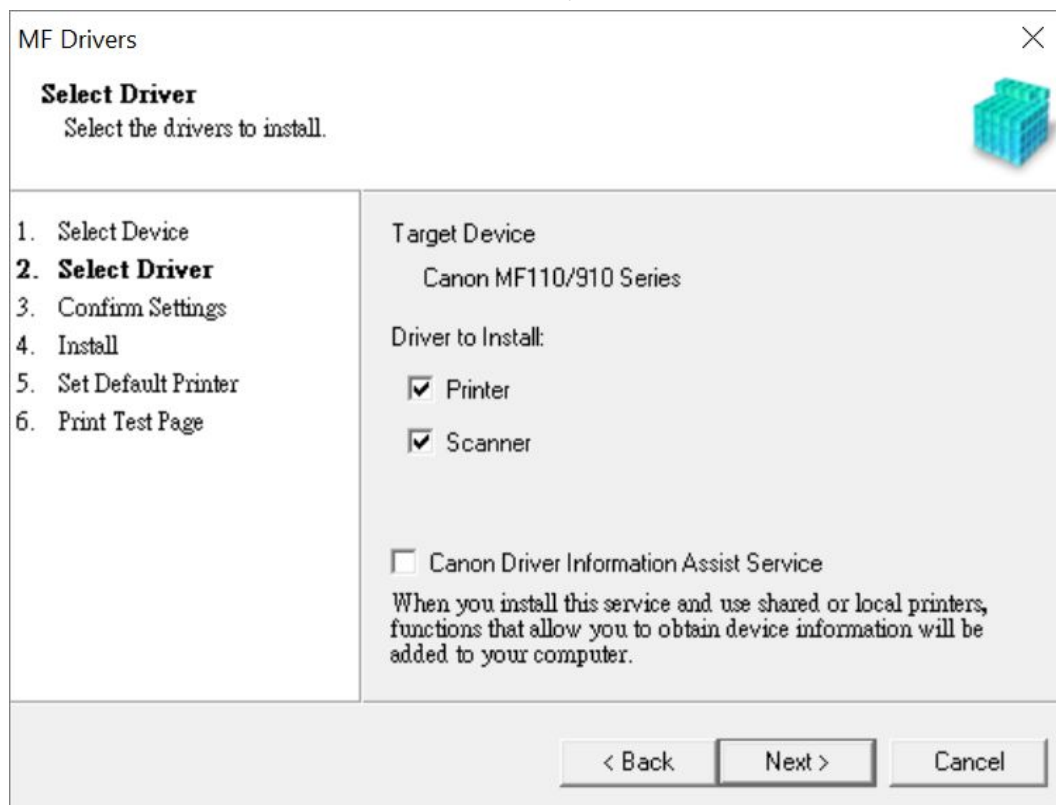


13. 選擇「MF110/910 Series」，按「Next >」（如清單沒有印表機，請選「Search by IP Address」方法連接或聯絡客戶服務熱線 31912333 尋求支援）

Select "MF110/910 Series", click "Next >" (If there is no printer on the list, please select "Search by IP Address" method to connect or contact customer service hotline 31912333 to seek for support)



14. 確認已剔選「Printer」「Scanner」，按「Next >」  
Confirm the “Printer” “Scanner” box is checked, click “Next >”



The screenshot shows the 'MF Drivers' window with the 'Select Driver' step highlighted in the progress list. The 'Target Device' is 'Canon MF110/910 Series'. Under 'Driver to Install', both 'Printer' and 'Scanner' are checked. There is an unchecked checkbox for 'Canon Driver Information Assist Service' with a descriptive text below it. At the bottom are buttons for '< Back', 'Next >', and 'Cancel'.

MF Drivers

**Select Driver**  
Select the drivers to install.

1. Select Device  
**2. Select Driver**  
3. Confirm Settings  
4. Install  
5. Set Default Printer  
6. Print Test Page

Target Device  
Canon MF110/910 Series

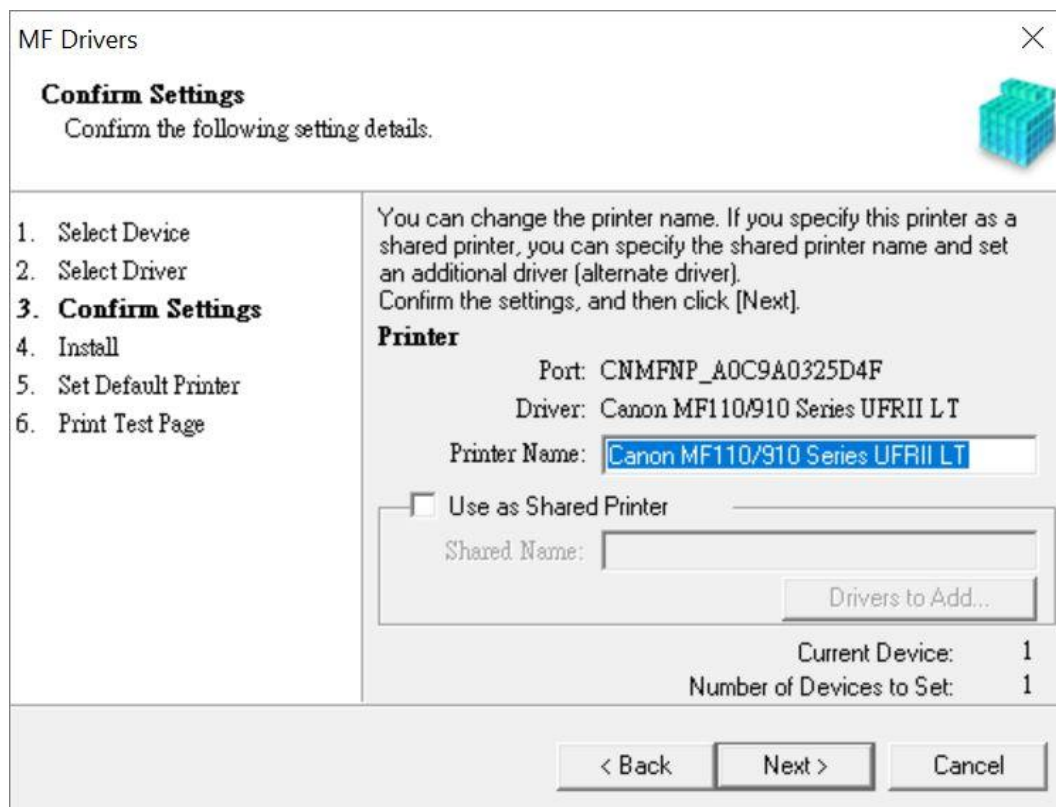
Driver to Install:

☒ Printer  
☒ Scanner

☐ Canon Driver Information Assist Service  
When you install this service and use shared or local printers, functions that allow you to obtain device information will be added to your computer.

< Back   Next >   Cancel

15. 按「Next >」  
Click “Next >”



The screenshot shows the 'MF Drivers' window with the 'Confirm Settings' step highlighted. It displays the printer name 'Canon MF110/910 Series UFR II LT' and the port 'CNMFNP\_A0C9A0325D4F'. There is an unchecked checkbox for 'Use as Shared Printer' and a text field for 'Shared Name'. At the bottom right, it shows 'Current Device: 1' and 'Number of Devices to Set: 1'. Buttons for '< Back', 'Next >', and 'Cancel' are at the bottom.

MF Drivers

**Confirm Settings**  
Confirm the following setting details.

1. Select Device  
2. Select Driver  
**3. Confirm Settings**  
4. Install  
5. Set Default Printer  
6. Print Test Page

You can change the printer name. If you specify this printer as a shared printer, you can specify the shared printer name and set an additional driver (alternate driver). Confirm the settings, and then click [Next].

**Printer**

Port: CNMFNP\_A0C9A0325D4F  
Driver: Canon MF110/910 Series UFR II LT  
Printer Name: Canon MF110/910 Series UFR II LT

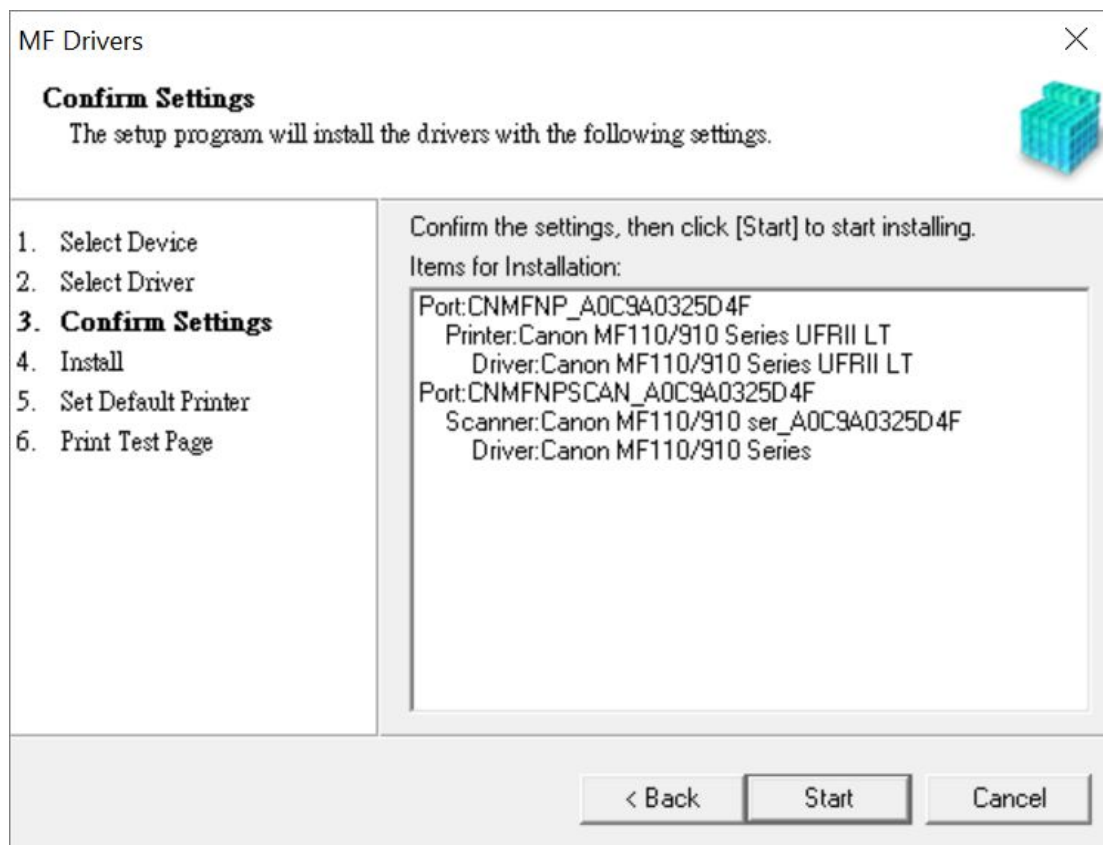
☐ Use as Shared Printer  
Shared Name:

Drivers to Add...

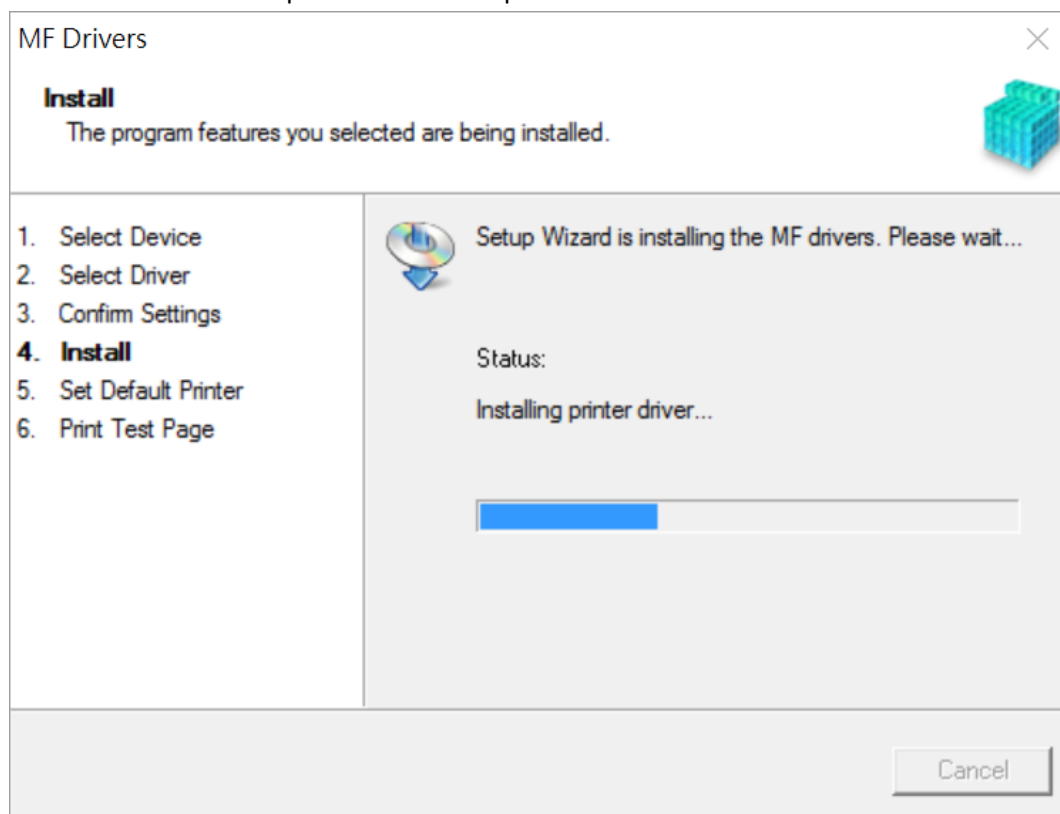
Current Device: 1  
Number of Devices to Set: 1

< Back   Next >   Cancel

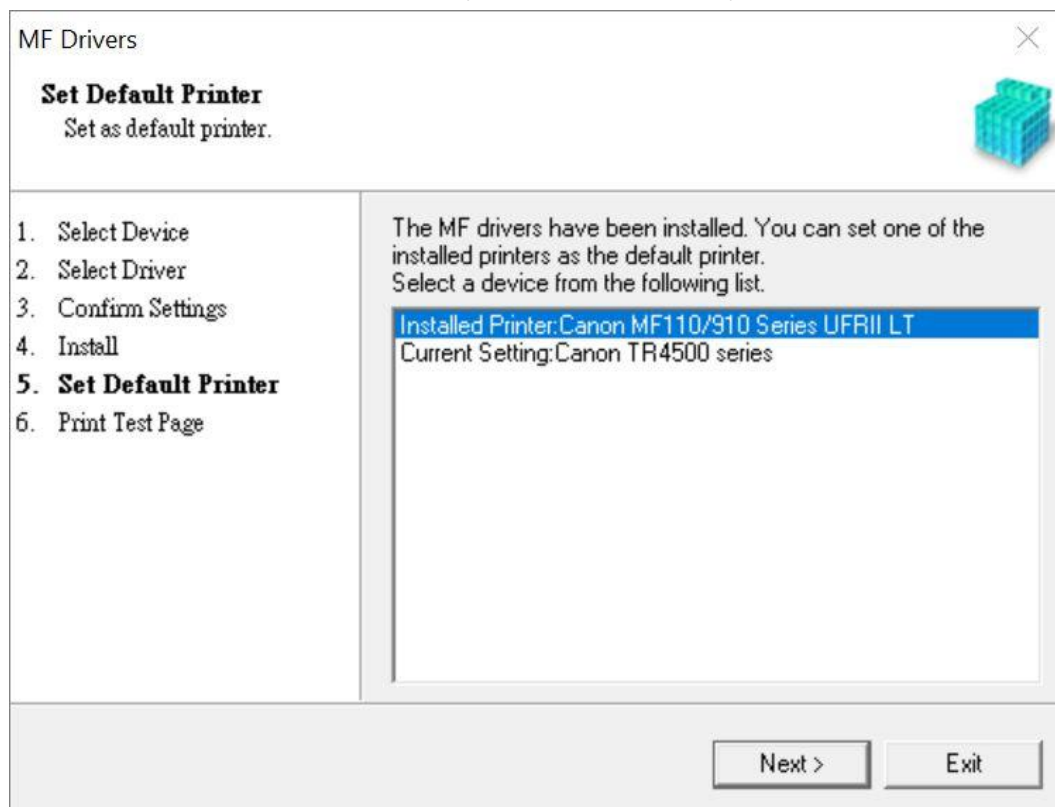
16. 按「Start」  
Click "Start"



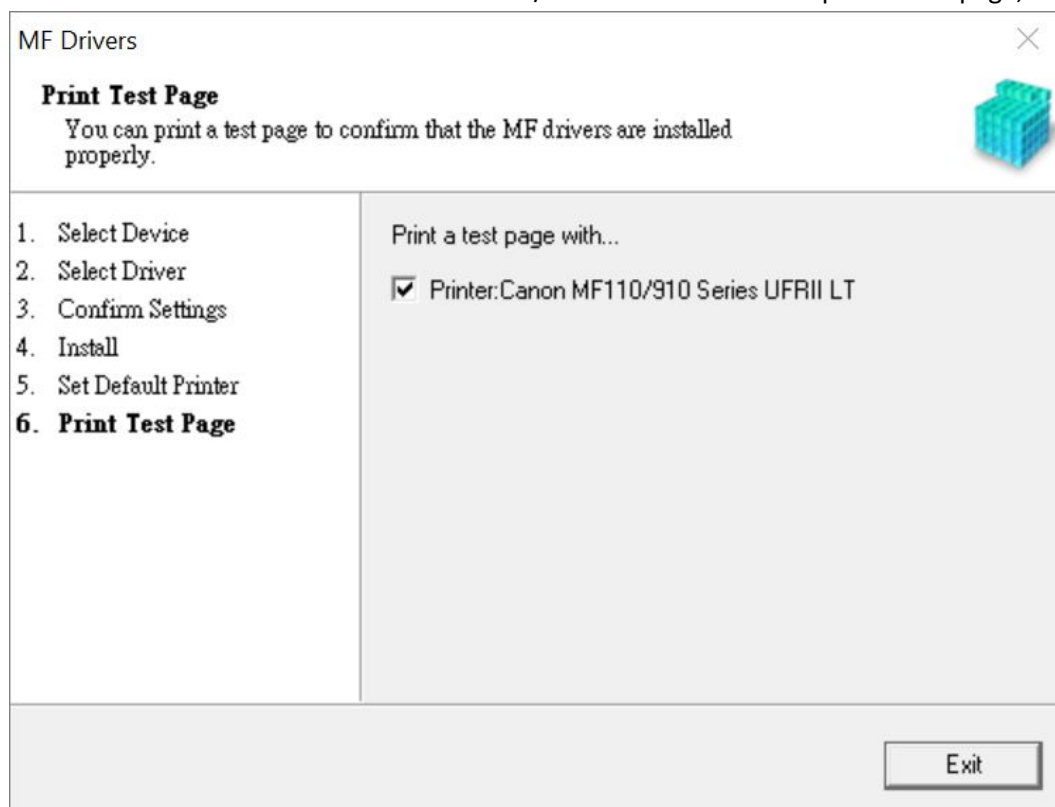
17. 請等待安裝精靈成完安裝  
Please wait for the setup wizard to accomplish installation



18. 選擇「Installed Printer: Canon MF110/910 Series UFR II LT」，按「Next >」  
Select “Installed Printer: Canon MF110/910 Series UFR II LT” , click “Next >”



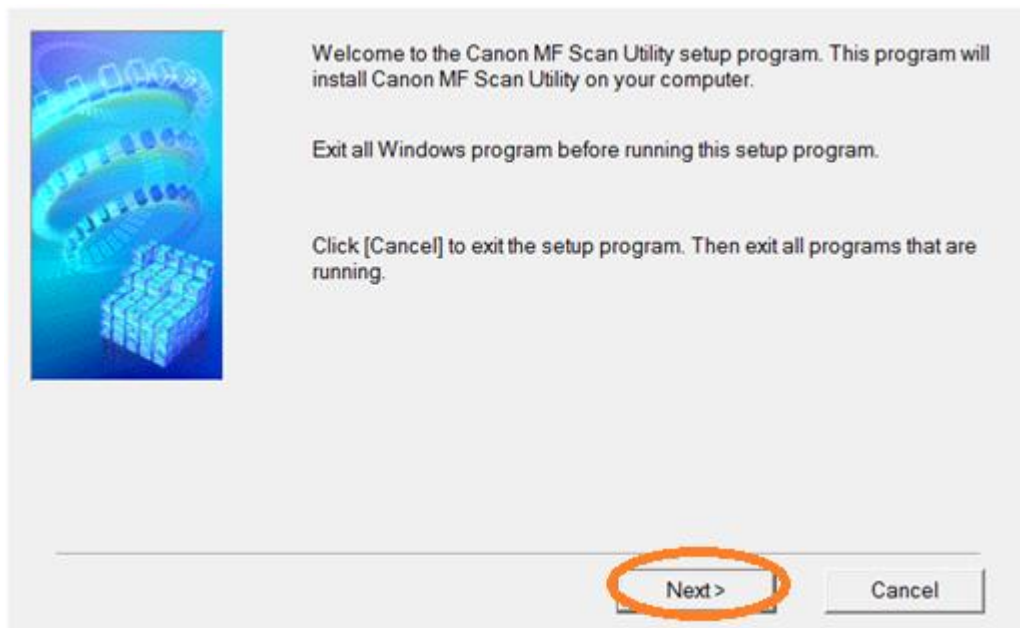
19. 可剔選「Printer: Canon MF110/910 Series UFR II LT」以進行列印測試頁，按「Exit」  
Can check the box at “Printer: Canon MF110/910 Series UFR II LT” to print a test page, click “Exit”



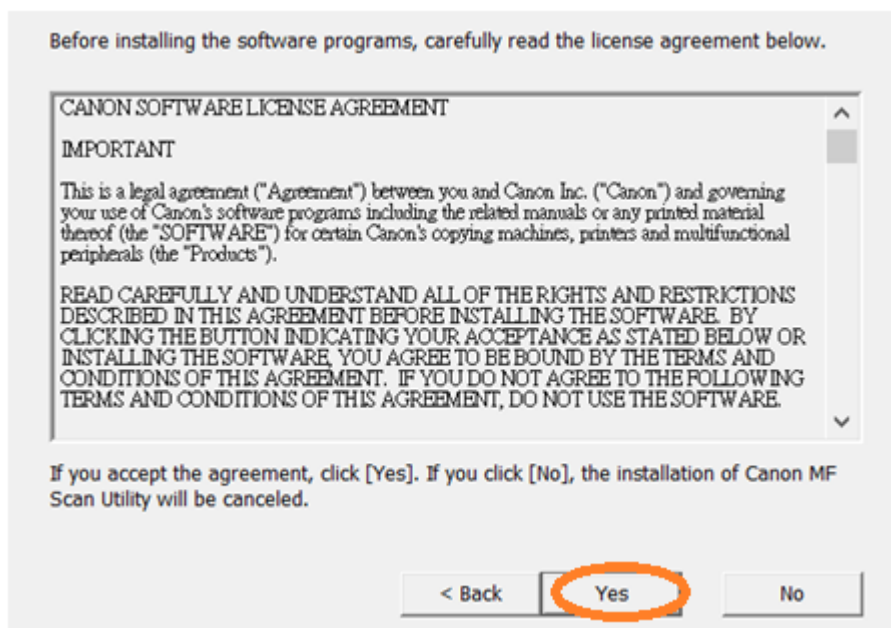


## 安裝掃描軟件MF Scan Utility MF Scan Utility installation procedure

20. 執行檔案〔winmfscanutilityvxxx.exe〕按「Next」  
Run the file [winmfscanutilityvxxx.exe], click "Next"



21. 按「Yes」  
Click "Yes"



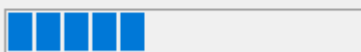


22. 等待安裝程序完成

Waiting for the installation progress

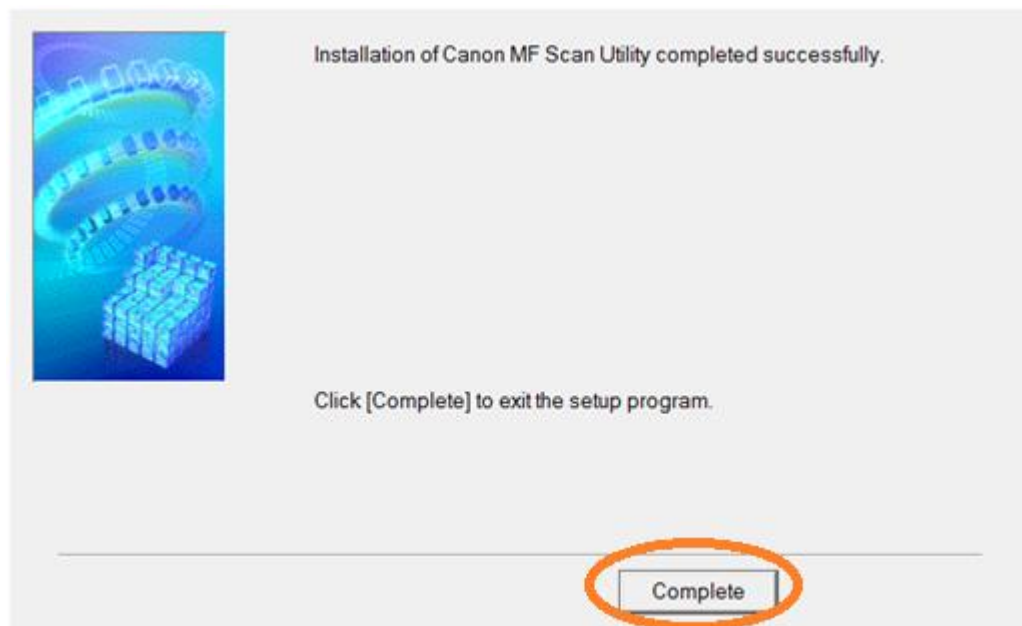
Install

C:\...\MF Scan Utility\jcdt40.dll



23. 按「Complete」

Click "Complete"



-完-

-End-