

透過 USB 連接安裝 MF113w 印表機的驅動程式步驟 (以 Win 10 作示範)

MF113w printer driver Installation Guide for Windows via USB connection (Win 10 as example)

****注意: 安裝驅動程式前請勿接駁 USB 線，以免系統發生錯誤****

**** Please don't plug the USB cable until the driver asked to do so****

下載及安裝步驟

Driver download and installation procedure

1. 到佳能網站<https://hk.canon/en/support/imageCLASS%20MF113w/model>，下載印表機的驅動程式
Go to: <https://hk.canon/en/support/imageCLASS%20MF113w/model>, download the printer driver

2. 選擇並下載以下檔案

Choose and download below files:

- 打印機驅動程式 / Printer Driver

[\[Windows x64bit\] MF113w/MF112/MF913w/MF912 MFDivers \(UFR II / ScanGear\)](#)

- 掃描器軟件 / Scanning software

[\[Windows 32bit & 64bit\] MF Scan Utility Ver.x.x.x.x](#)

3. 下載完成後，打開驅動程式安裝檔案「MF110MF910MFDriverVxxxWxxukEN.exe」

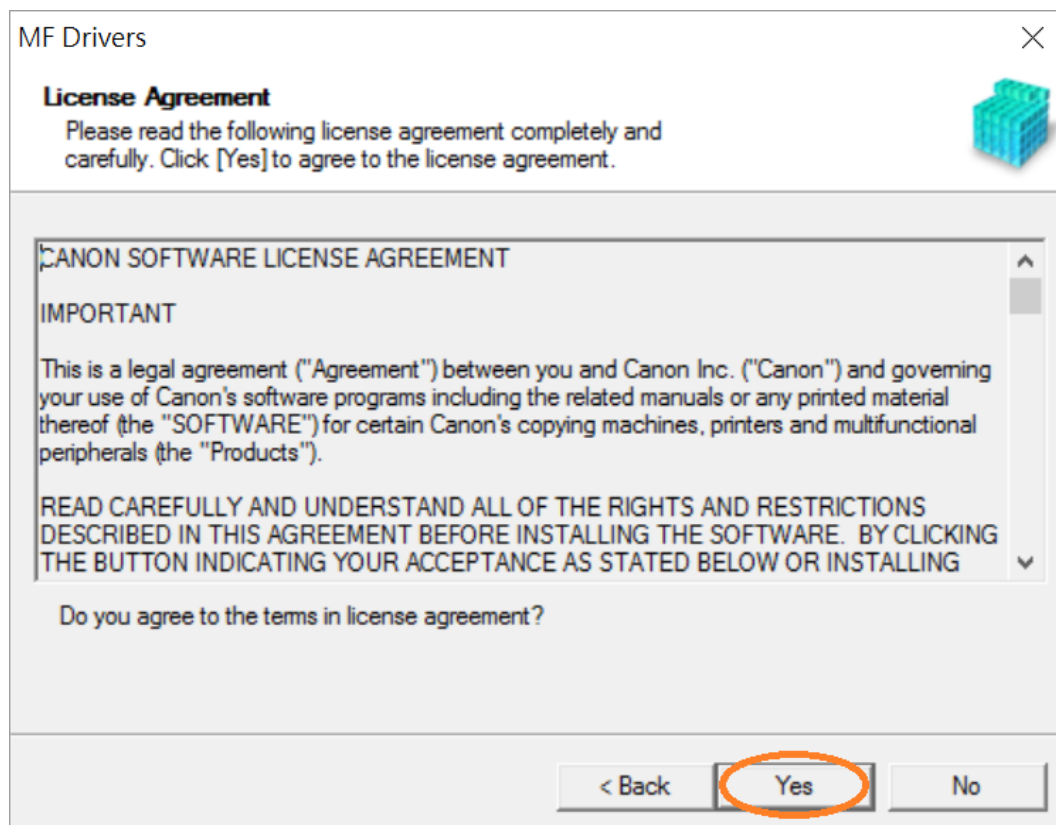
Open driver installation file "MF110MF910MFDriverVxxxWxxukEN.exe" after downloaded

4. 按「Next >」

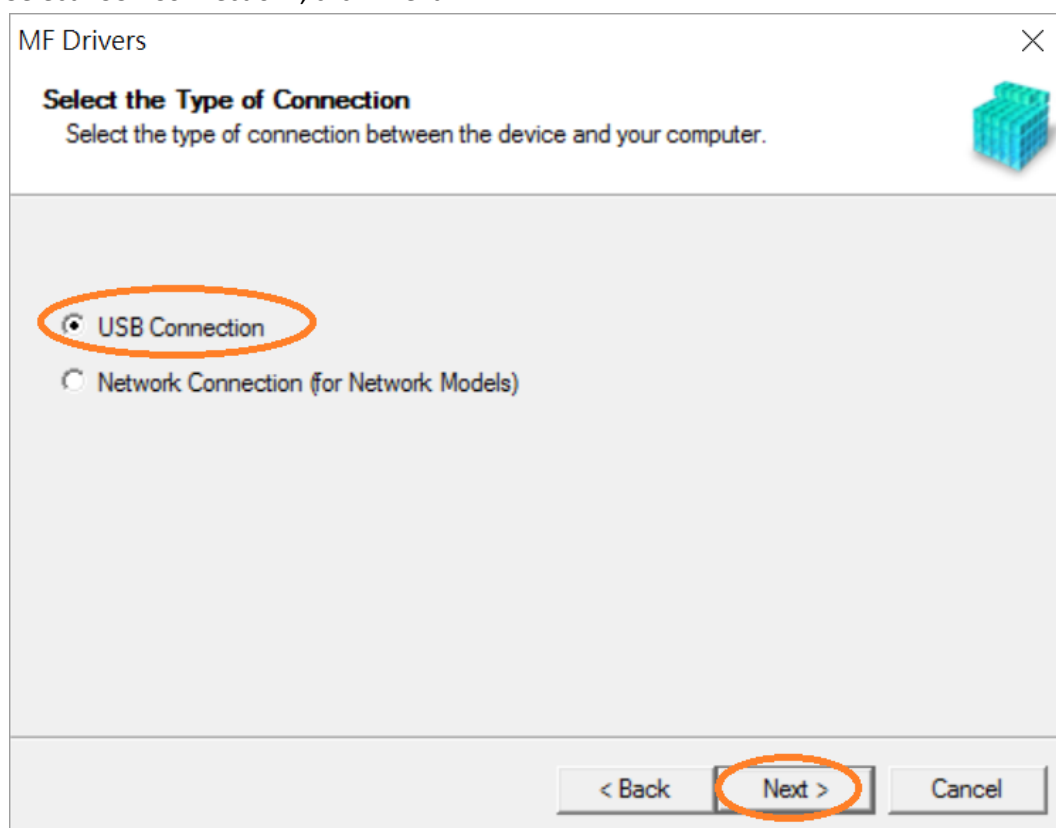
Click "Next >"



5. 按「Yes」
Click “Yes”

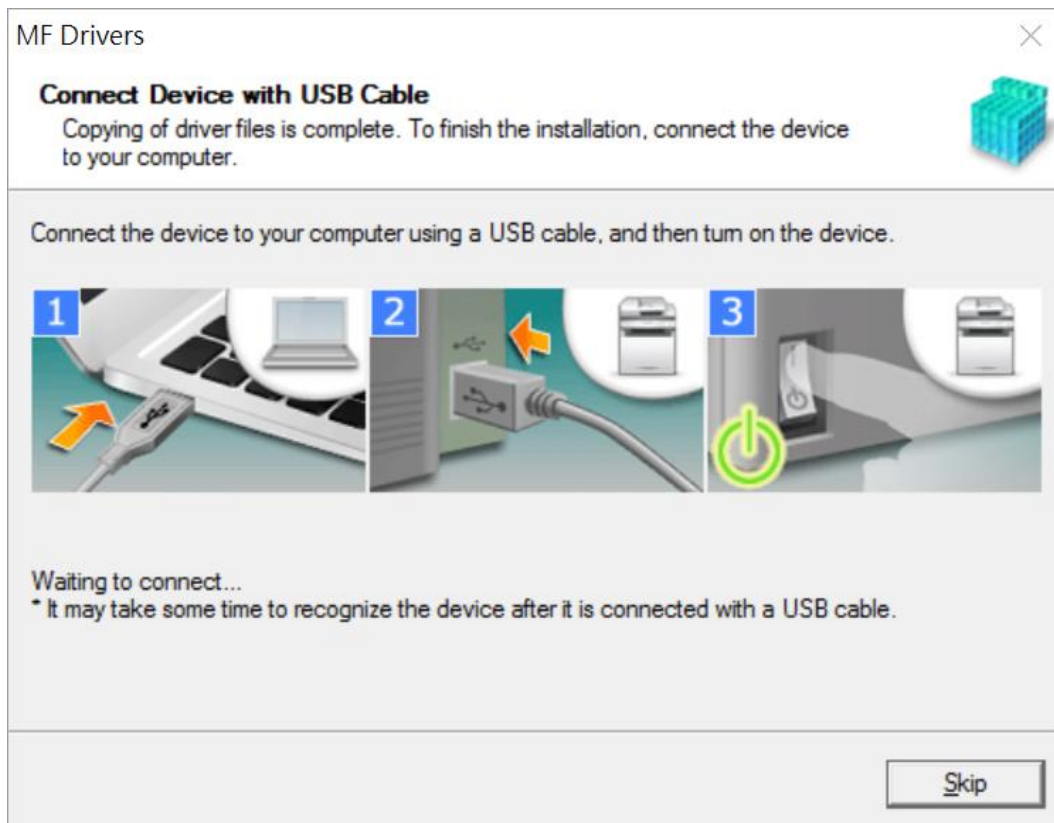


6. 選擇「USB Connection」，按「Next >」
Select “USB Connection”, click “Next >”



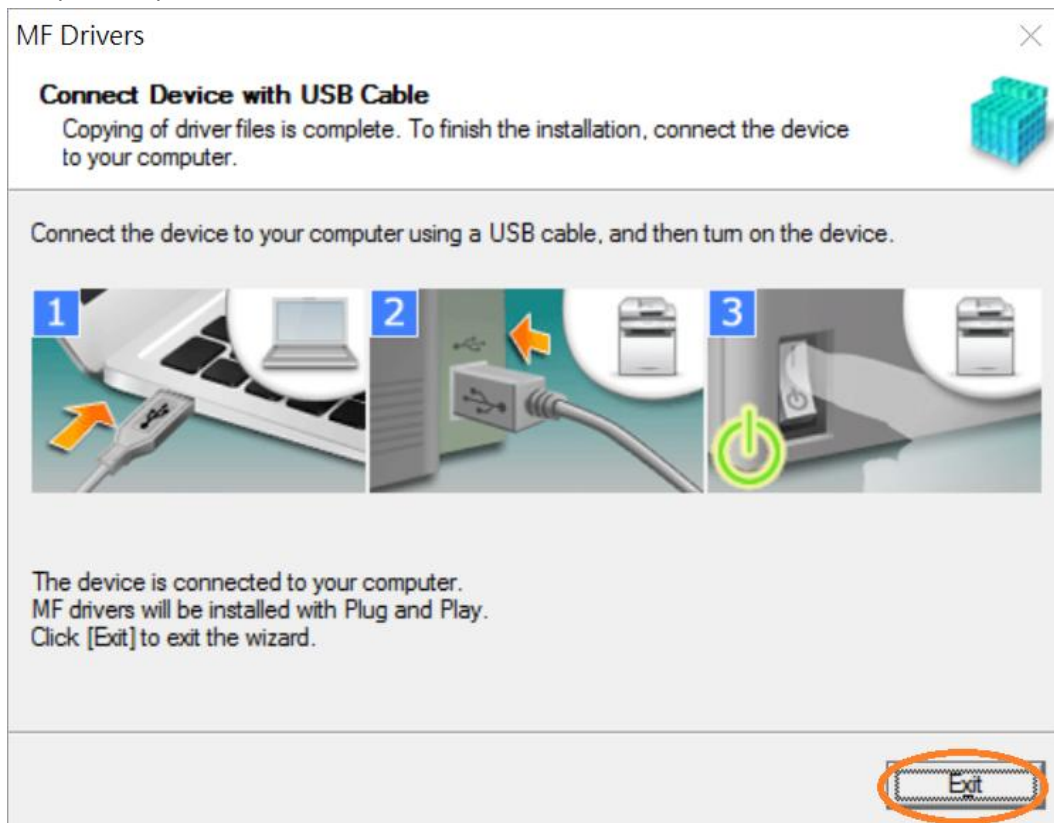
7. 以 USB 線接駁打印機及電腦，然後開啟打印機

Connect printer and computer with the USB cable, and then turn on the printer



8. 安裝完成，按「Exit」

Setup is completed, click "Exit"

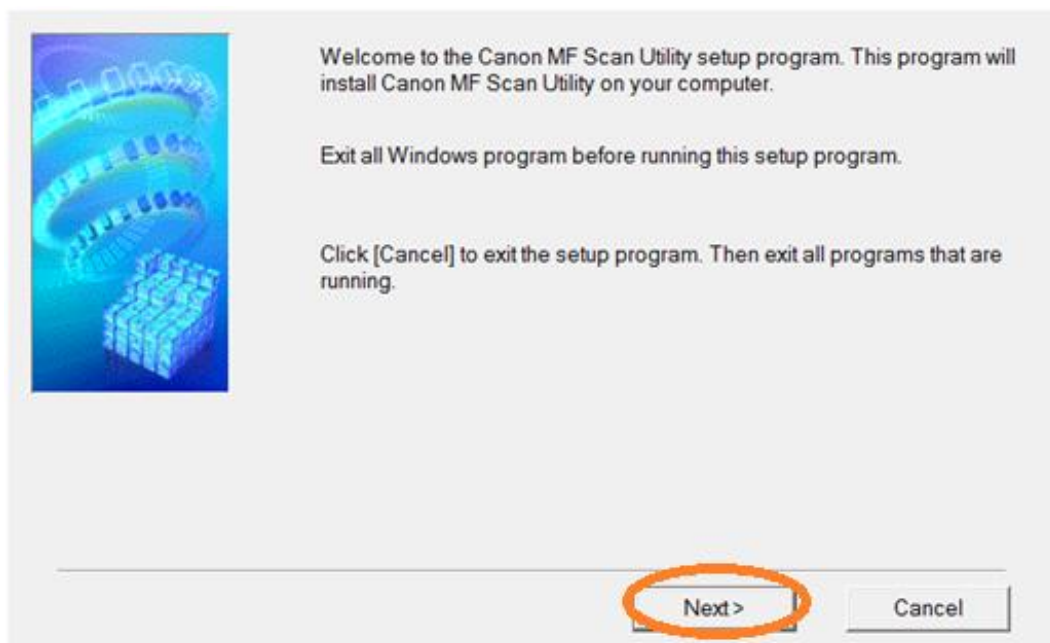


安裝掃描軟件MF Scan Utility

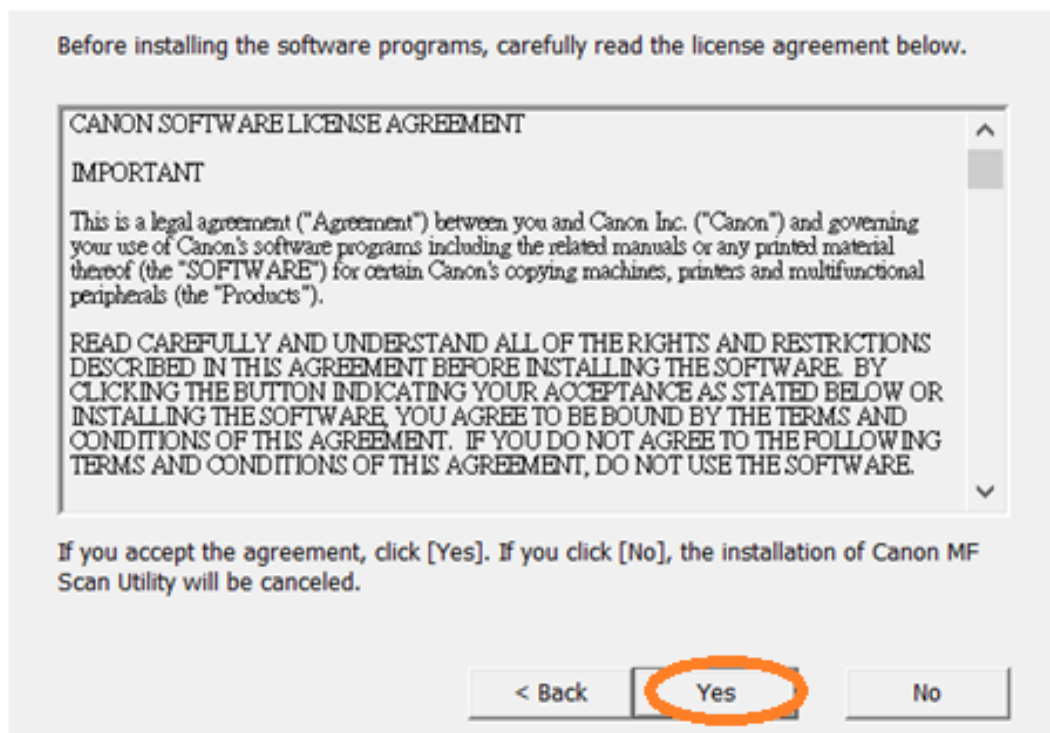
MF Scan Utility installation procedure

9. 執行檔案 [winmfscanutilityvxxxx.exe] 按「Next」
Run the file [winmfscanutilityvxxxx.exe] , click “Next”

10. 按「Next >」
Click “Next >”



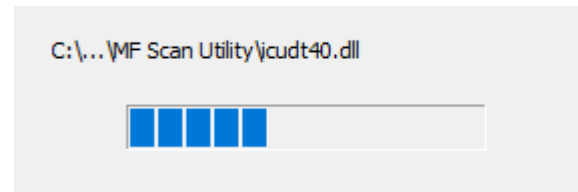
11. 按「Yes」
Click “Yes”



12. 等待安裝程序完成

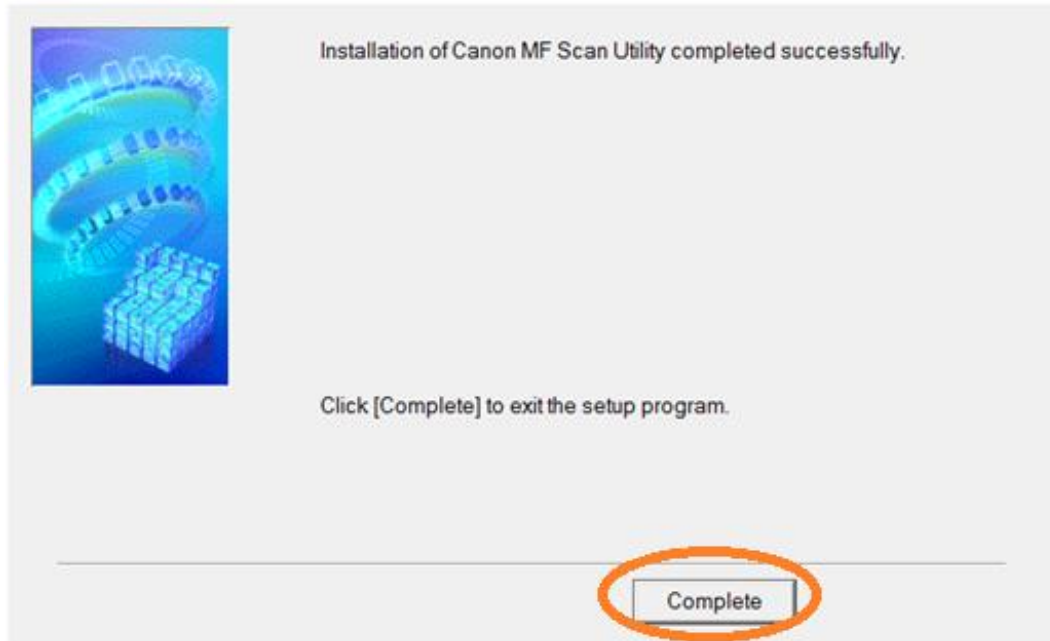
Waiting for the installation progress

Install



13. 按「Complete」

Click "Complete"



-完-
-End-