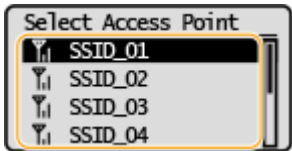


LBP113w 在 Windows 透過 WIFI 連線連接印表機之驅動程式步驟
Driver installation procedure for LBP113w in Windows (Via WIFI)

先將打印機連接到路由器，詳細可參考以下步驟：

The Connection by selecting a wireless router:

1. 在首頁畫面中選擇 <功能表>
Select “Menu” in the Home Screen
2. 選擇「網路設定」
Select “Network Settings”
 - 若顯示 PIN 碼輸入畫面，請使用數字鍵輸入 PIN 碼，然後點選「套用」
 - If a screen for entering a PIN is displayed, enter the PIN with the numeric keys and tap “Apply”
3. 選「無線區域網路設定」
Select “Wireless LAN Settings”
4. 閱讀顯示訊息後按“OK”
Read the message that is displayed, and select “OK”
5. 選「SSID 設定」
Select “SSID settings”
6. 選「選擇存取點」
Select “Select Access Point”
7. 選擇無線區域網路路由器
Select the router SSID

8. 輸入您記下的網路鍵值
使用數字鍵輸入網路金鑰(路由器密碼)，然後點選「套用」
Enter the network key using the numeric keys, and select “Apply”
9. 點選「是」
Select “yes”
10. 等待直至顯示<已連接>，選<關閉>
Wait until message <Connected.> is displayed. Select <Close>

下載及安裝步驟

Driver download and Installation procedure

1. 按以下網址下載驅動程式：

如電腦使用 Windows 64 位元系統，請下載：

<http://support-hk.canon-asia.com/contents/HK/EN/0100684301.html>

如電腦使用 Windows 32 位元系統，請下載：

<http://support-hk.canon-asia.com/contents/HK/EN/0100684201.html>

Click the link(s) below to download the printer driver:

If computer is running Windows 64 bit system, please click the link below:

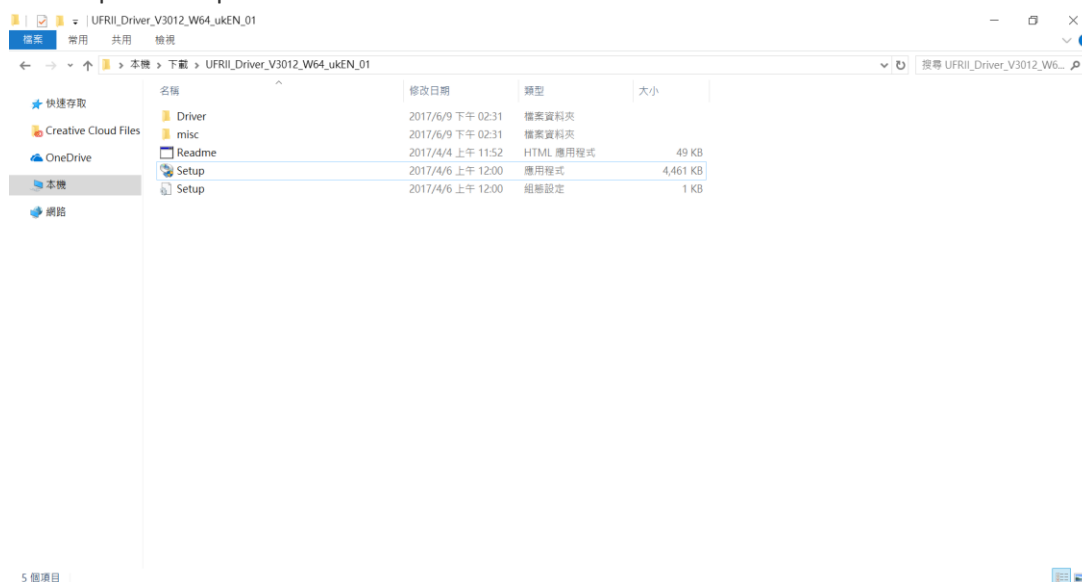
<http://support-hk.canon-asia.com/contents/HK/EN/0100684301.html>

If computer is running Windows 32 bit system, please click the link below:

<http://support-hk.canon-asia.com/contents/HK/EN/0100684201.html>

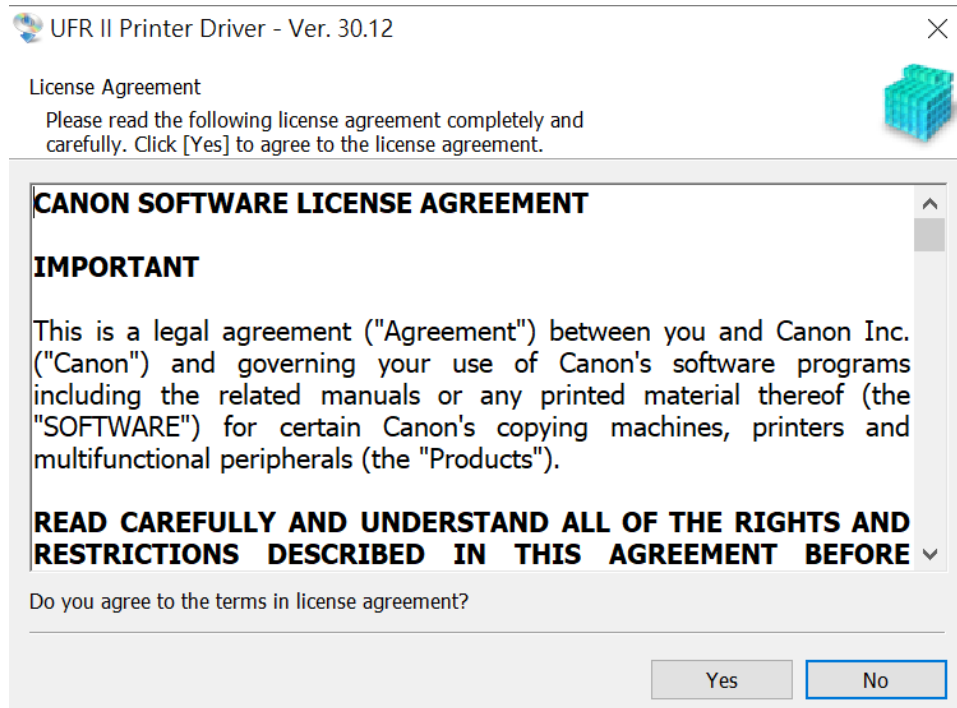
2. 下載的文件以自解壓縮檔檔案(.exe 格式)保存在指定的文件夾中，打開文件解壓縮。將在同一文件夾中創建新文件夾。新文件夾的名稱與解壓縮文件的名稱相同，進入新文件夾開啟「Setup.exe」開始安裝

Open the downloaded file, a same name new folder will be created. Go into new folder open "Setup.exe" start installation"



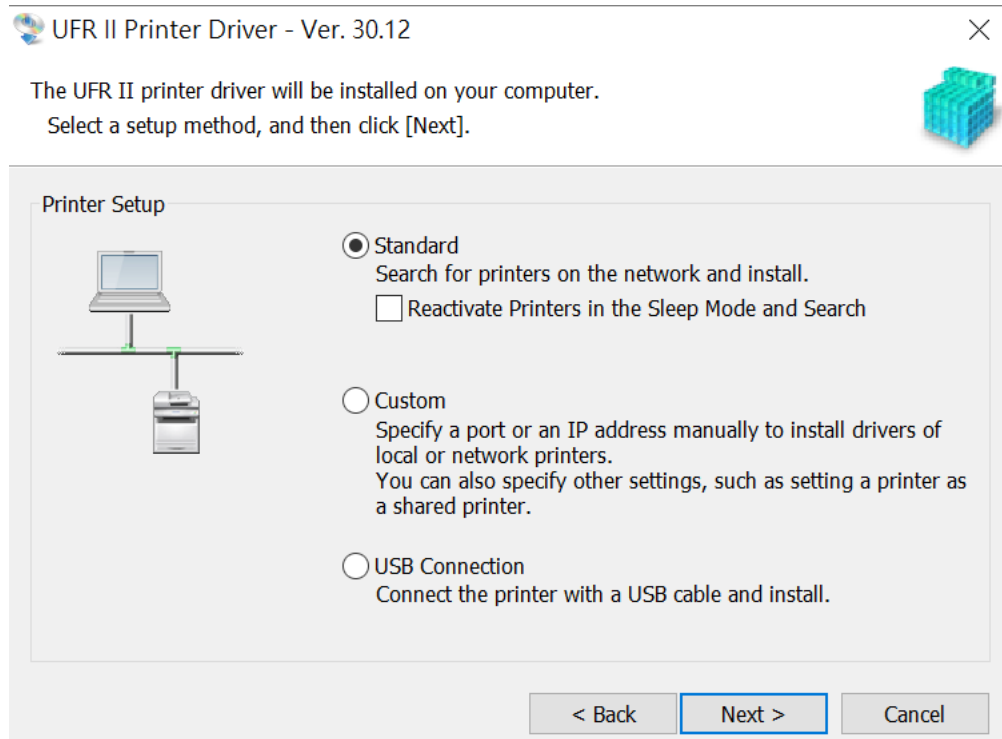
3. 選擇「Yes」

Choose "Yes"



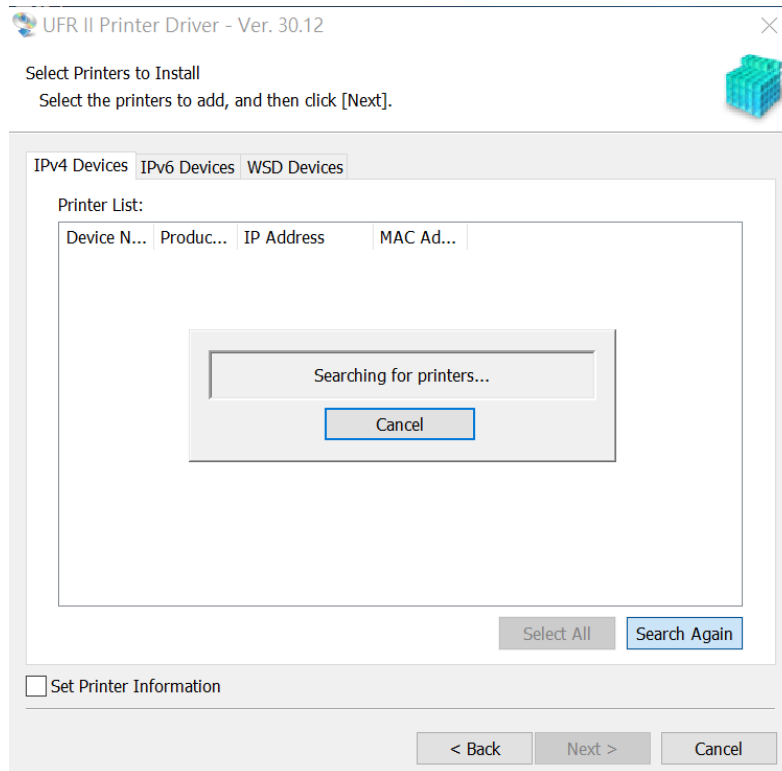
4. 選擇「Standard」，按「Next」

Choose "Standard", press "Next"



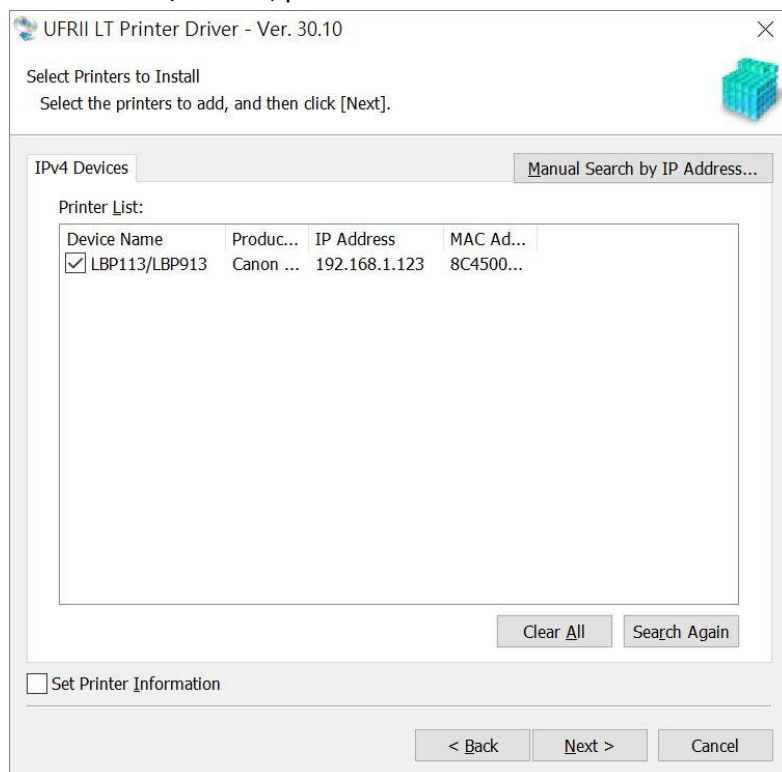
5. 等待搜尋印表機

Wait for searching printer



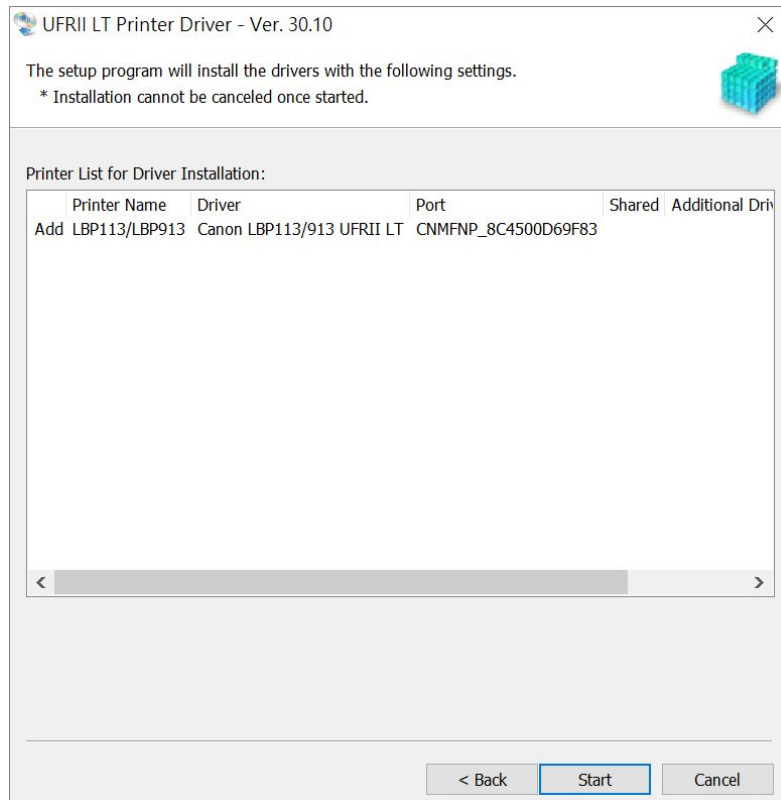
6. 勾選 LBP113/LBP913，按「Next」

Select LBP113/LBP913, press "Next"



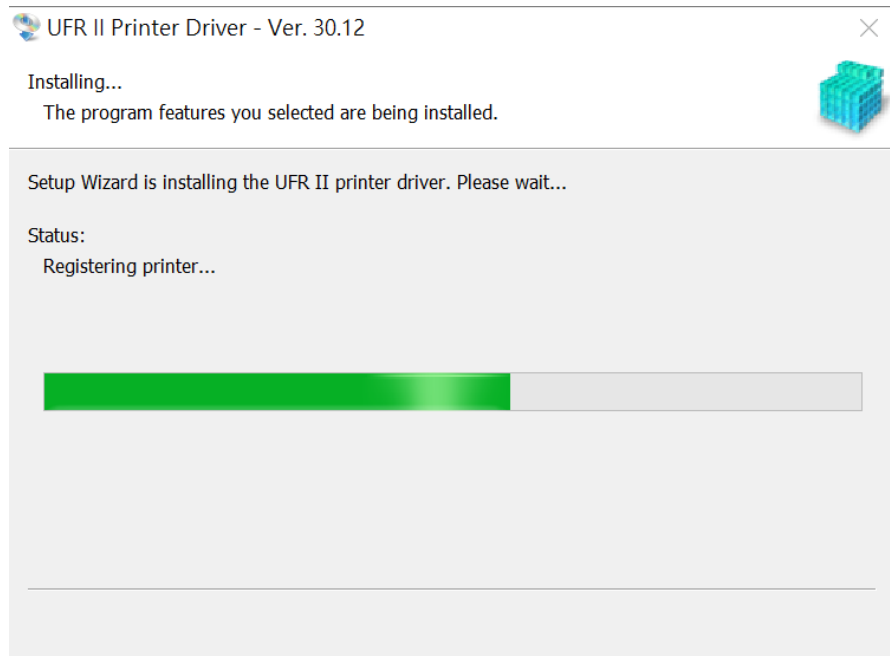
7. 確定印表機資料，按「Start」

Confirm printer information, press "Start"



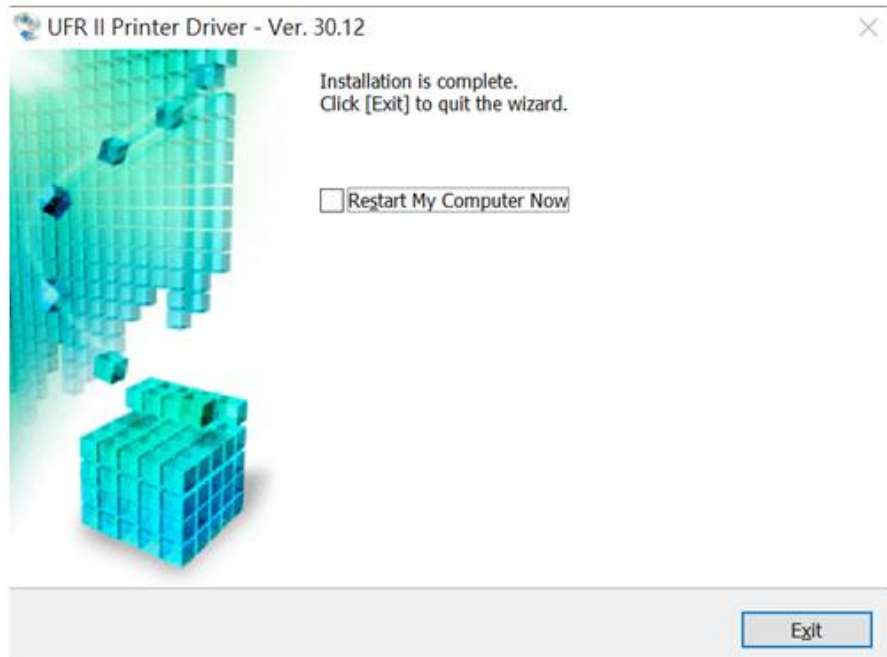
8. 等待安裝程序完成

Wait for the installation progress



9. 按「Exit」完成安裝

Click "Exit" to finish installation



-完-
-End-