

透過 USB 連接安裝 MF426dw 印表機的驅動程式步驟 (以 Win 10 作示範)

MF426dw printer driver Installation Guide for Windows via USB connection (Win 10 as example)

**\*\*注意: 安裝驅動程式前請勿接駁 USB 線，以免系統發生錯誤\*\***

**\*\* Please don't plug the USB cable until the driver asked to do so\*\***

1. 到佳能網站 <https://hk.canon/en/support/imageCLASS%20MF426dw/model>，下載印表機的驅動程式  
Go to <https://hk.canon/en/support/imageCLASS%20MF426dw/model>, download the printer driver

2. 選擇並下載以下檔案

Choose and download below files:

- 打印機驅動程式 / Printer Driver

[\[Windows x64bit\] MF429x/MF426dw MFDivers \(Generic Plus UFR II/ Generic Plus PCL6/ Generic Plus PS3/ Generic FAX/ ScanGear\)](#)

- 掃描器軟件 / Scanning software

[\[Windows 32bit & 64bit\] MF Scan Utility Ver.x.x.x.x](#)

3. 下載完成後，打開驅動程式安裝檔案「MF429MFDriverVxxxxxxx.exe」

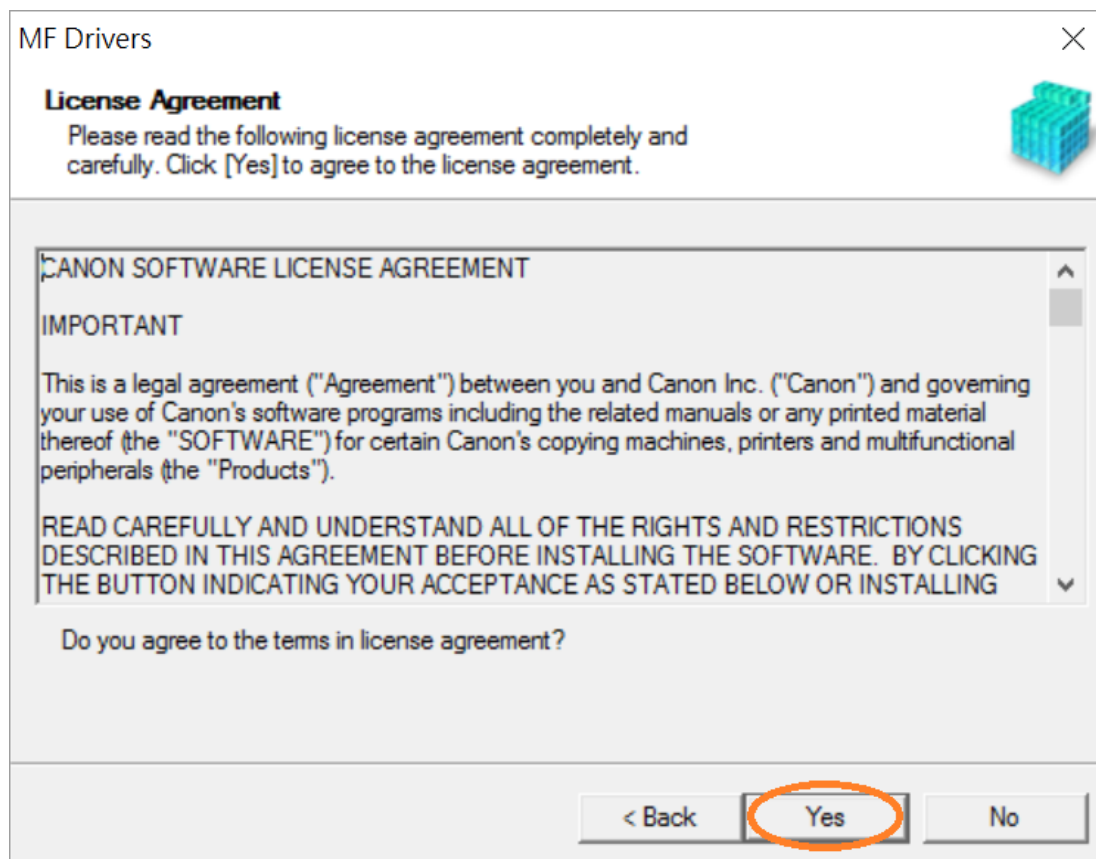
Open driver installation file "MF429MFDriverVxxxxxxx.exe" after downloaded

4. 按「Next >」

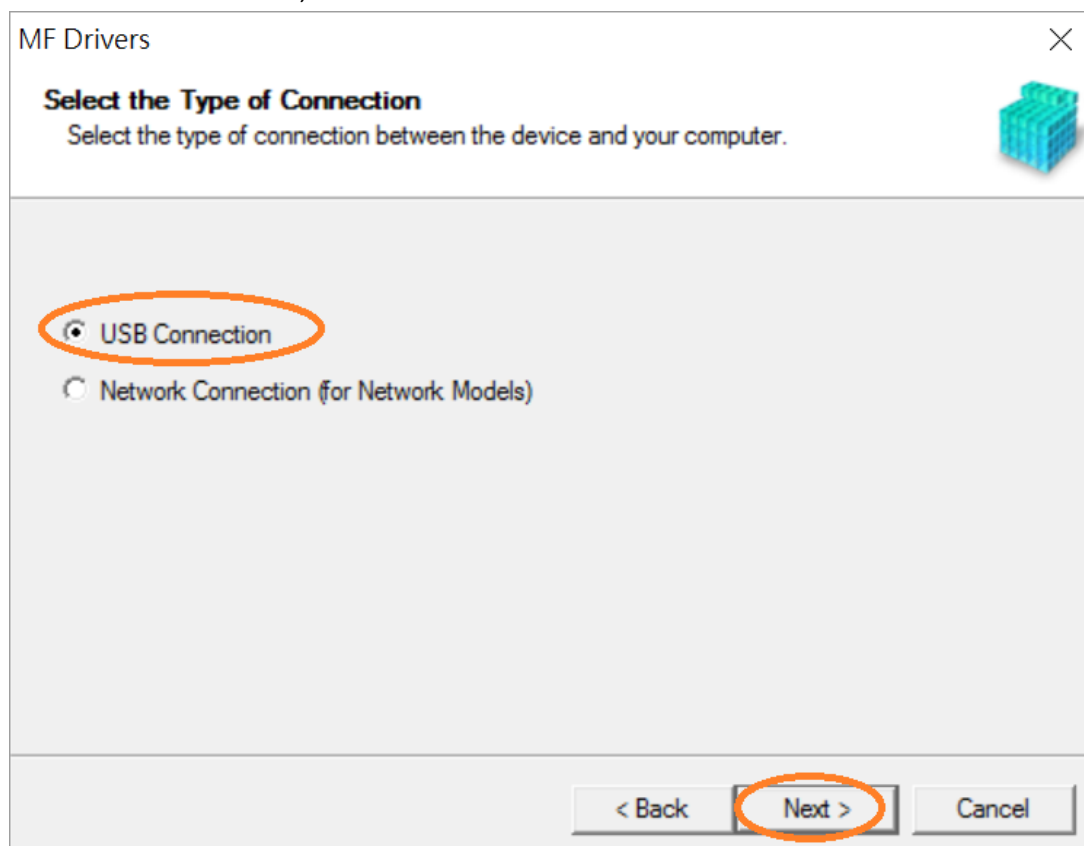
Click "Next >"



5. 按「Yes」  
Click “Yes”

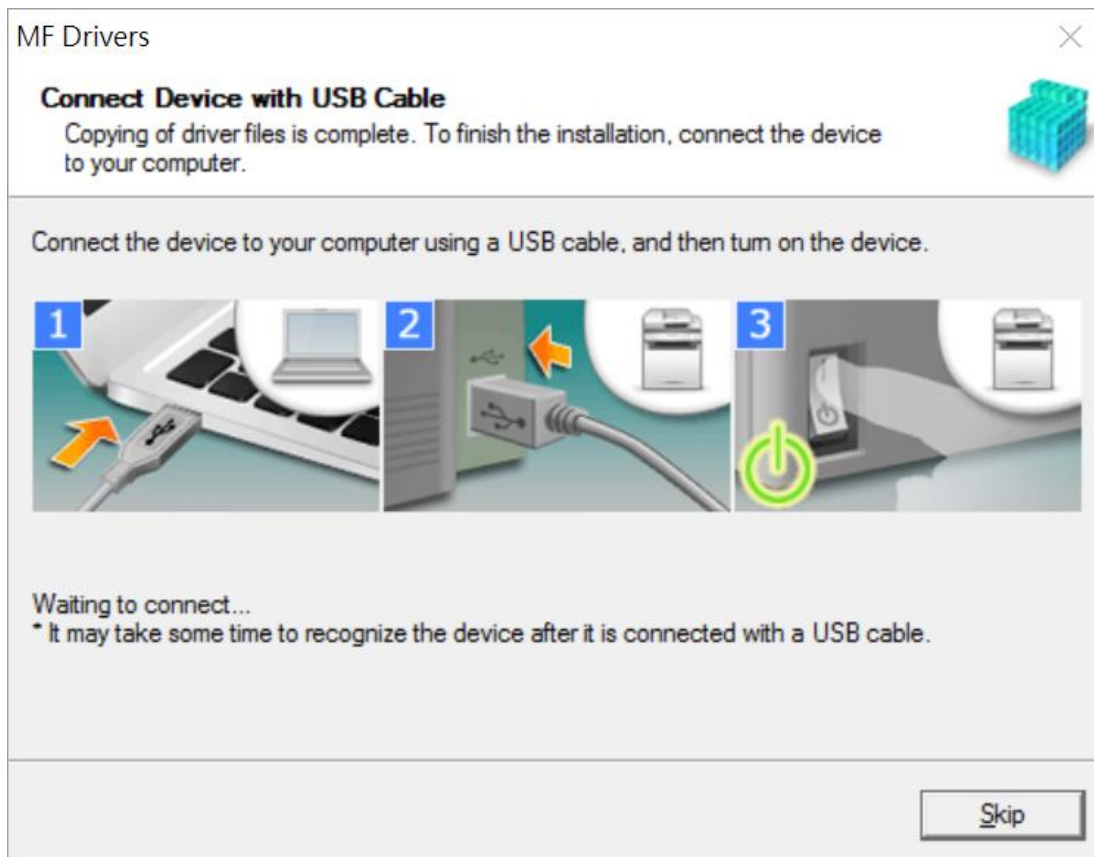


6. 選擇「USB Connection」，按「Next >」  
Select “USB Connection”, click “Next >”



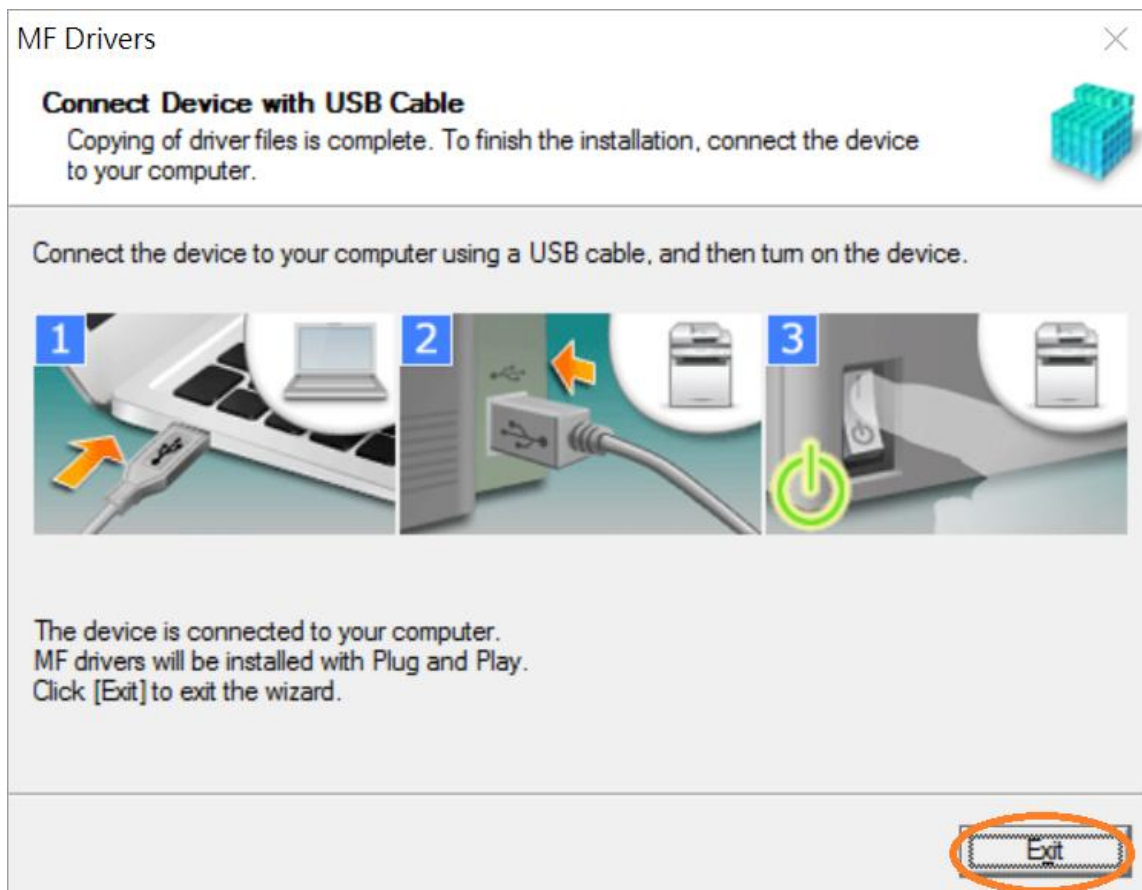
7. 以 USB 線接駁打印機及電腦，然後開啟打印機

Connect printer and computer with the USB cable, and then turn on the printer



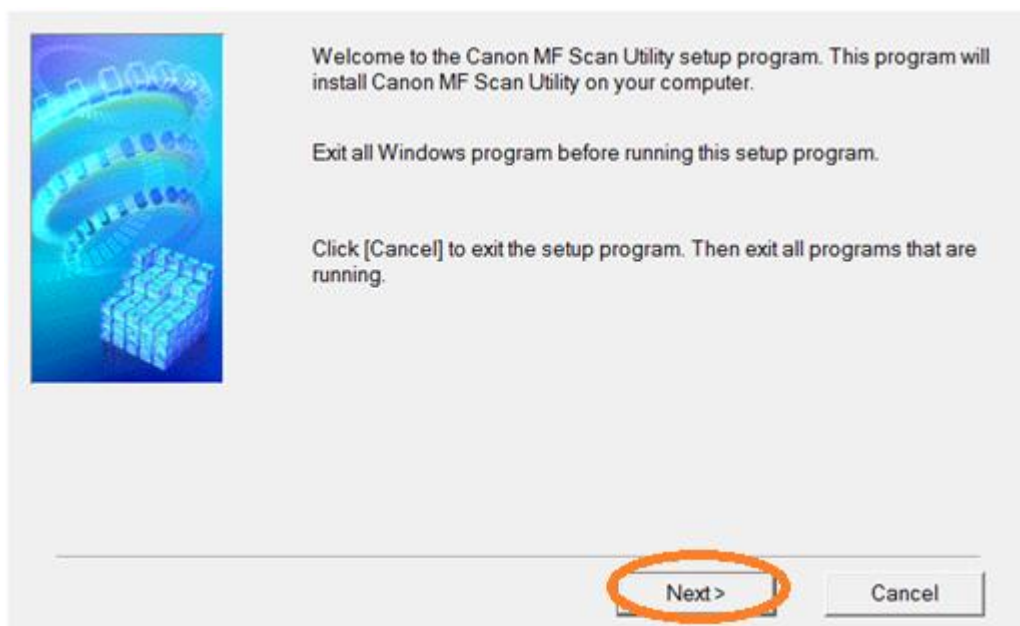
8. 安裝完成，按「Exit」

Setup is completed, click "Exit"

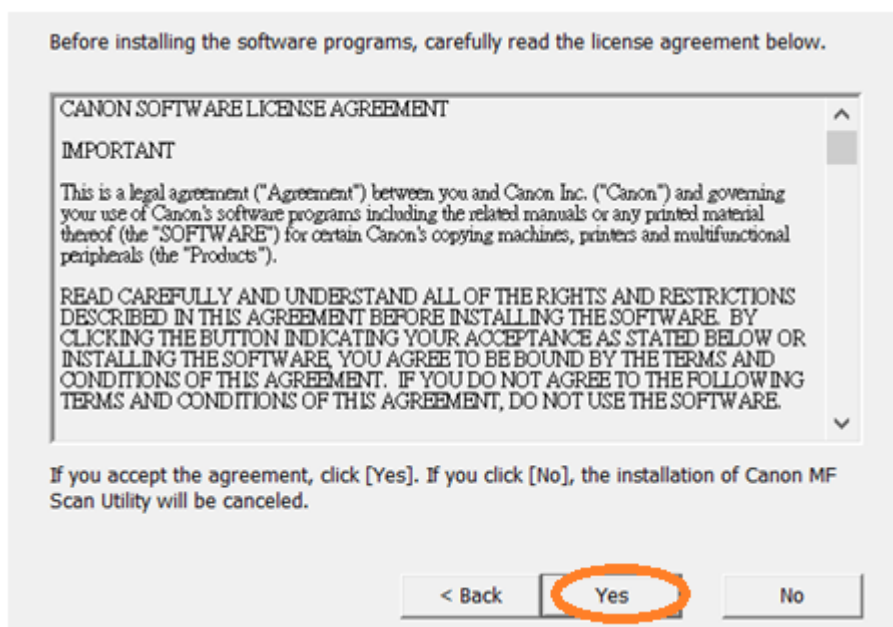


## 安裝掃描軟件MF Scan Utility MF Scan Utility installation procedure

9. 執行檔案〔winmfscanutilityvxxx.exe〕按「Next」  
Run the file [winmfscanutilityvxxx.exe] , click “Next”



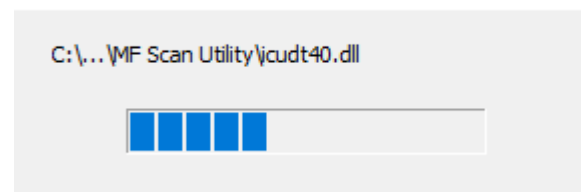
10. 按「Yes」  
Click “Yes”



11. 等待安裝程序完成

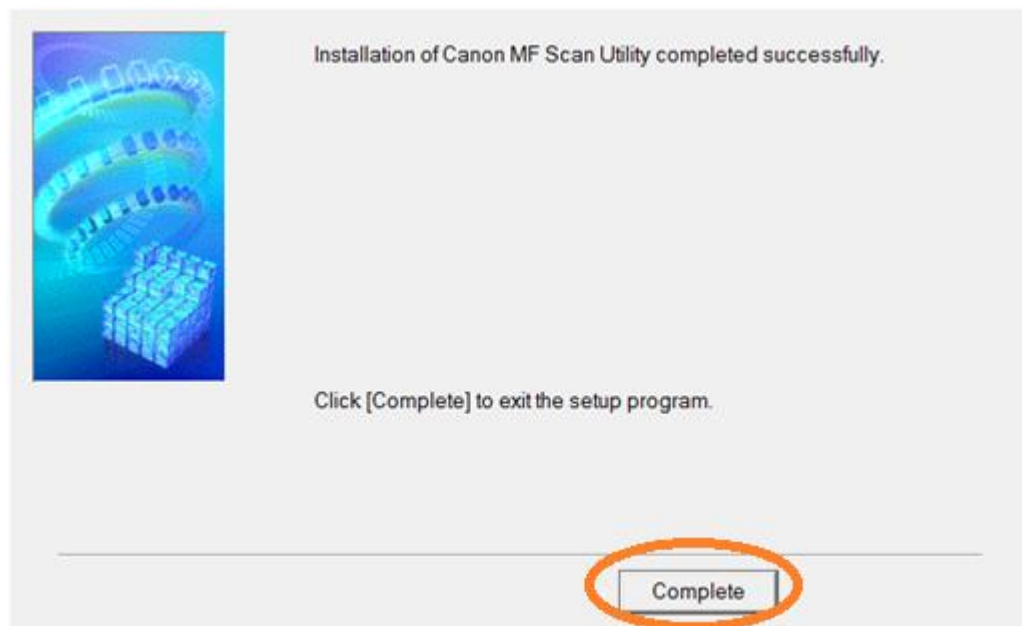
Waiting for the installation progress

Install



12. 按「Complete」

Click "Complete"



-完-

-End-