

透過無線網路連接安裝 MF525x 印表機的驅動程式步驟 (以 Win 10 作示範)
MF525x printer driver Installation Guide for Windows via Wi-Fi connection (Win 10 as example)

先將打印機連接到網路，詳細可參考以下步驟

Connect printer to network first, please refer to following procedure

1. 開啟印表機
Turn on the printer
2. 在主畫面中點選「功能表」
Tap “Menu” in the Home Screen
3. 點選「參數選擇」，再點選「網路」
Tap “Preferences”, then tap “Network”
4. 點選「無線區域網路設定」
Tap “Wireless LAN Settings”
5. 點選 <SSID 設定>
Tap “SSID setting”
6. 點選 <選擇存取點>
Tap “Select Access Point”
7. 選擇無線區域網路路由器名稱(SSID)
Select the wireless router’s signal (SSID)



8. 使用數字鍵輸入網路金鑰（路由器密碼），然後點選 <套用>
Enter the network key using the numeric keys, and tap “Apply”
9. 點選 <是>
Tap “Yes”
10. 設定完成時，會顯示「已連線」，點選<關閉>

Wait until message “Connected” is displayed, select “Close”

等待約 2 分鐘，直到本機的 IP 位址設定完成

Wait approximately 2 minutes until the IP address settings of the machine complete

下載及安裝步驟

Driver download and installation procedure

11. 到佳能網站 <https://hk.canon/en/support/imageCLASS%20MF525x/model>，下載印表機的驅動程式
Go to: <https://hk.canon/en/support/imageCLASS%20MF525x/model>, download the printer driver

12. 選擇並下載以下檔案

Choose and download below files:

- 打印機驅動程式 / Printer Driver

[Windows xxbit] MF525x MFDivers (Generic Plus UFR II/ Generic Plus PCL6/ Generic Plus PS3/ Generic FAX/ ScanGear)

- 掃描器軟件 / Scanning software

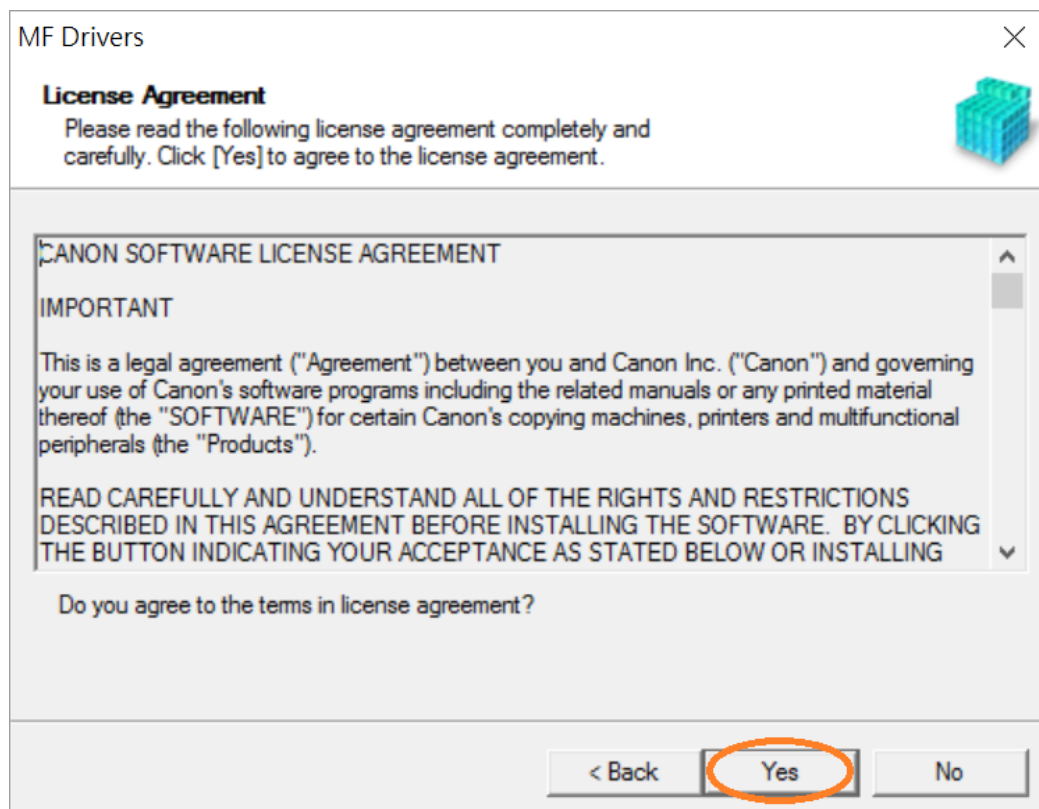
[Windows 32bit & 64bit] MF Scan Utility Ver.x.x.x.x

13. 執行檔案〔MF525xMFDriverXXXXXX.exe〕按「Next」

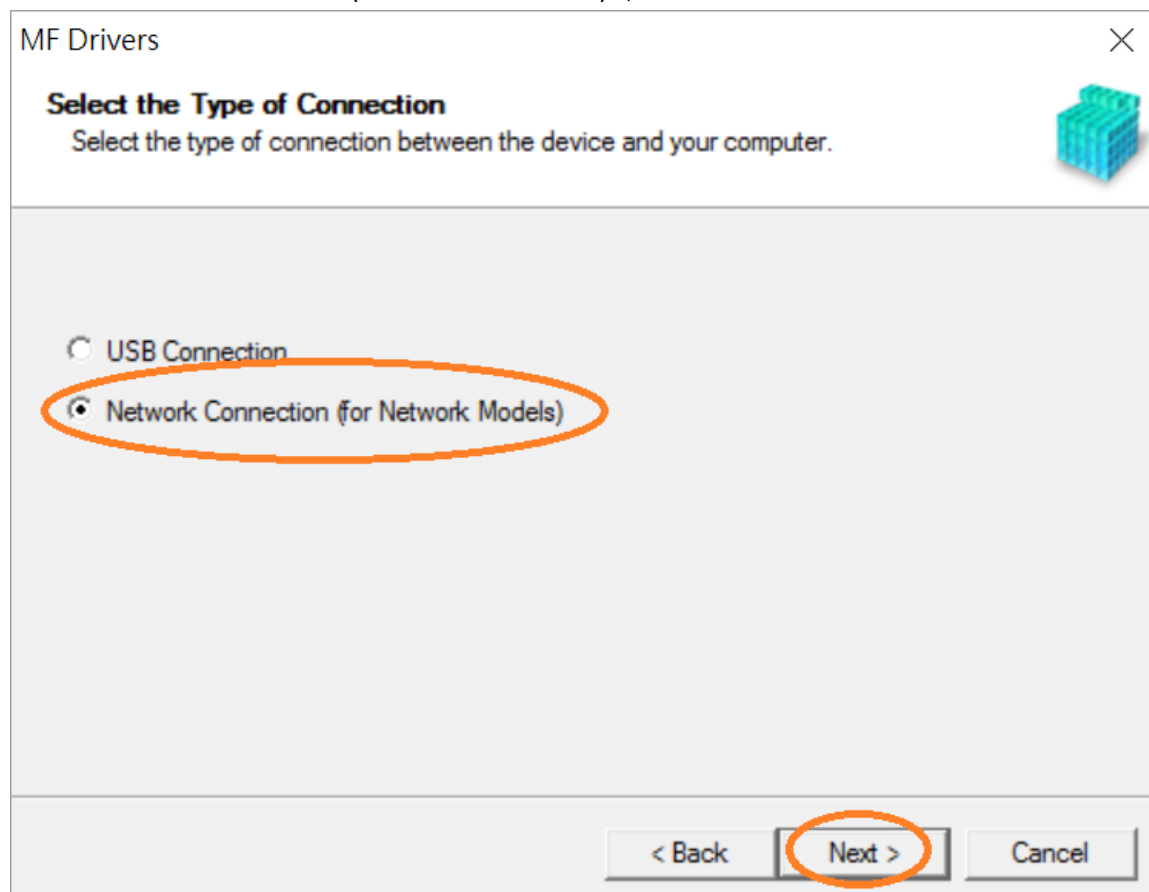
Run File [MF525xMFDriverXXXXXX.exe], click "Next"



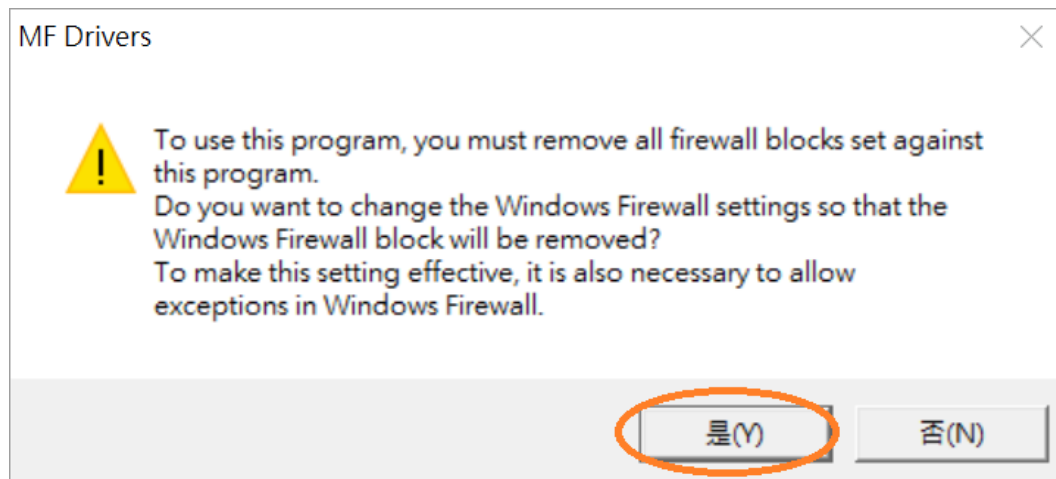
14. 按「Yes」
Click "Yes"



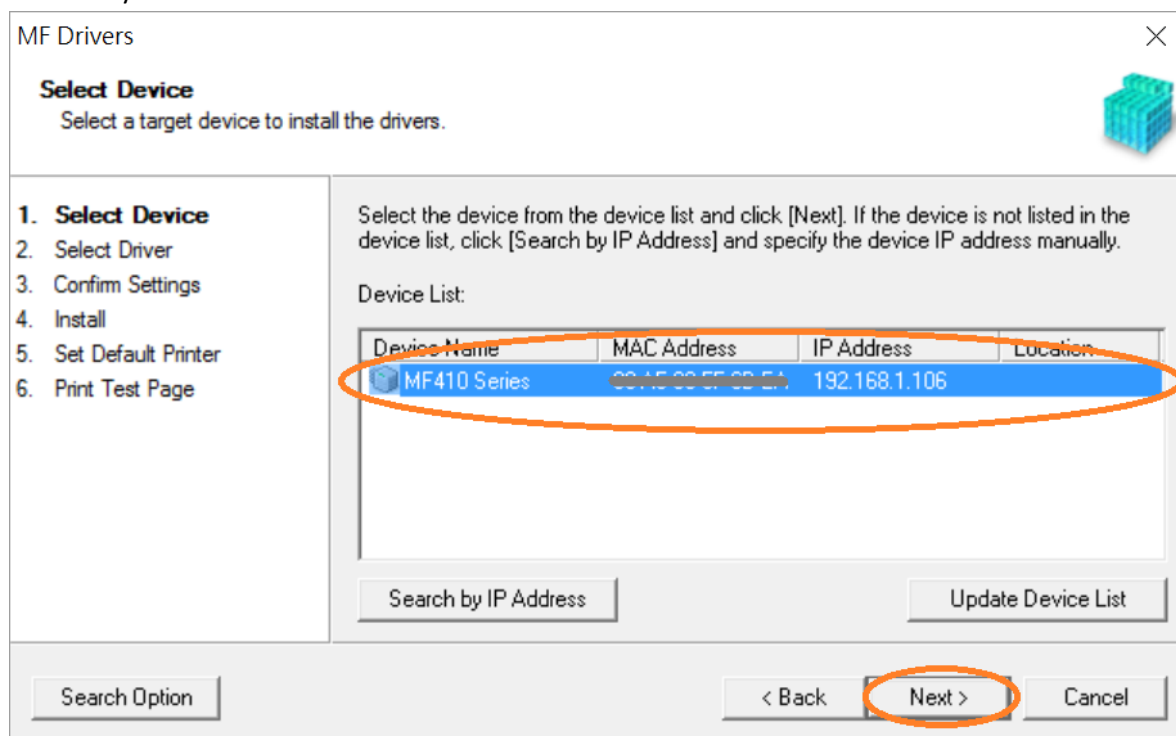
15. 選擇「Network Connection (for Network Models)」，按「Next >」
Select "Network Connection (for Network Models)" , click "Next >"



16. 按「是」
Click "Yes"

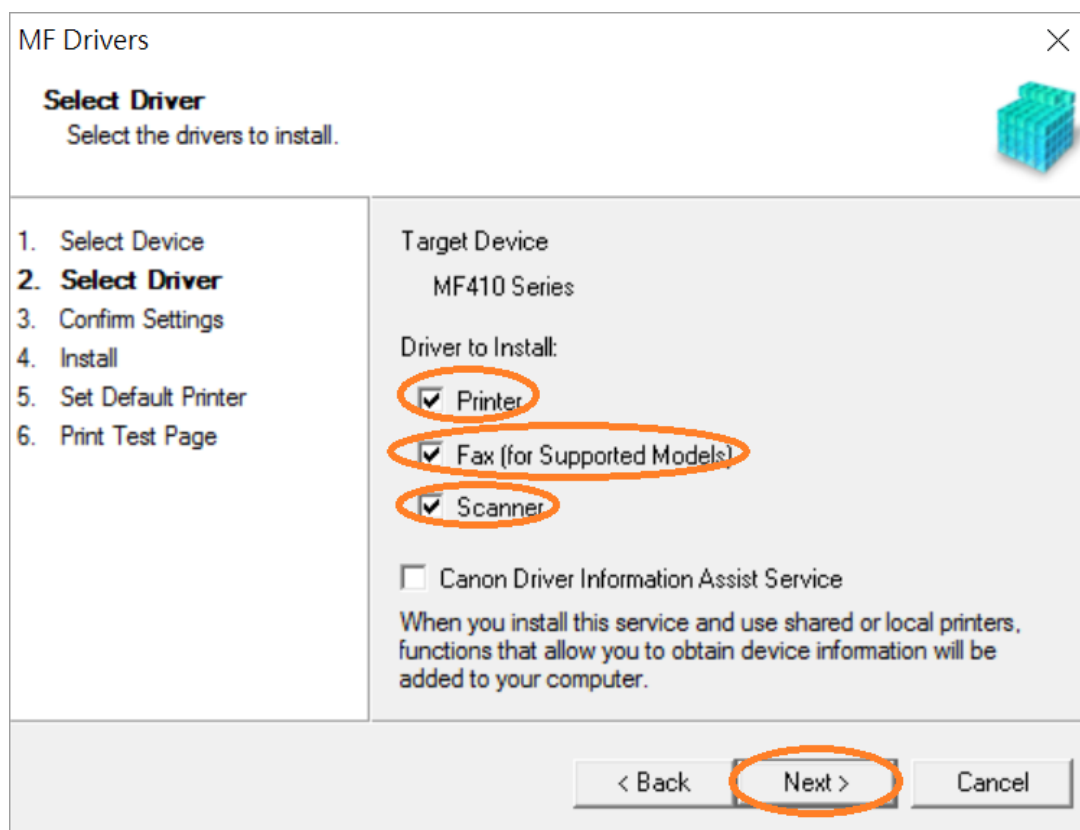


17. 選擇「MF520 Series」（以 MF410 Series 為例子），按「Next >」（如清單沒有印表機，請選「Search by IP Address」方法連接或聯絡客戶服務熱線 31912333 尋求支援）
Select "MF520 Series" (MF410 Series as example), click "Next >" (If there is no printer on the list, please select "Search by IP Address" method to connect or contact customer service hotline 31912333 to seek for support)



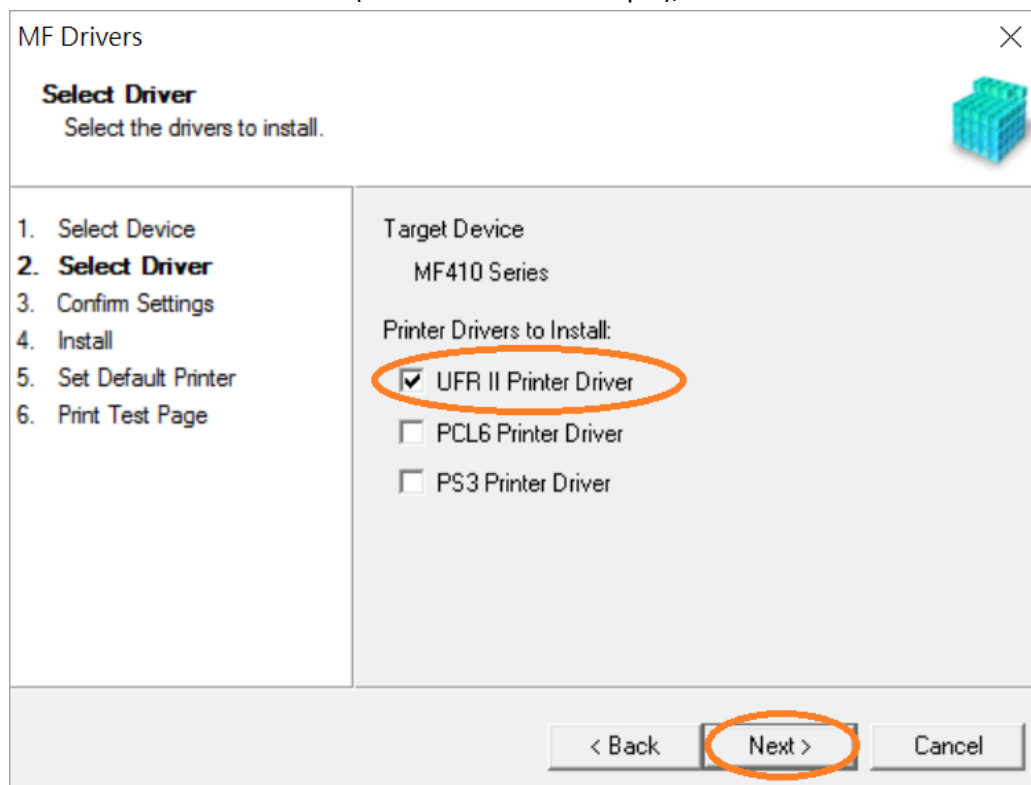
18. 確認已剔選「Printer」「Fax (for Supported Models)」「Scanner」（以 MF410 Series 為例子），按「Next >」

Confirm the “Printer” “Fax for Supported Models” “Scanner” box is checked(MF410 Series as example), click “Next >”

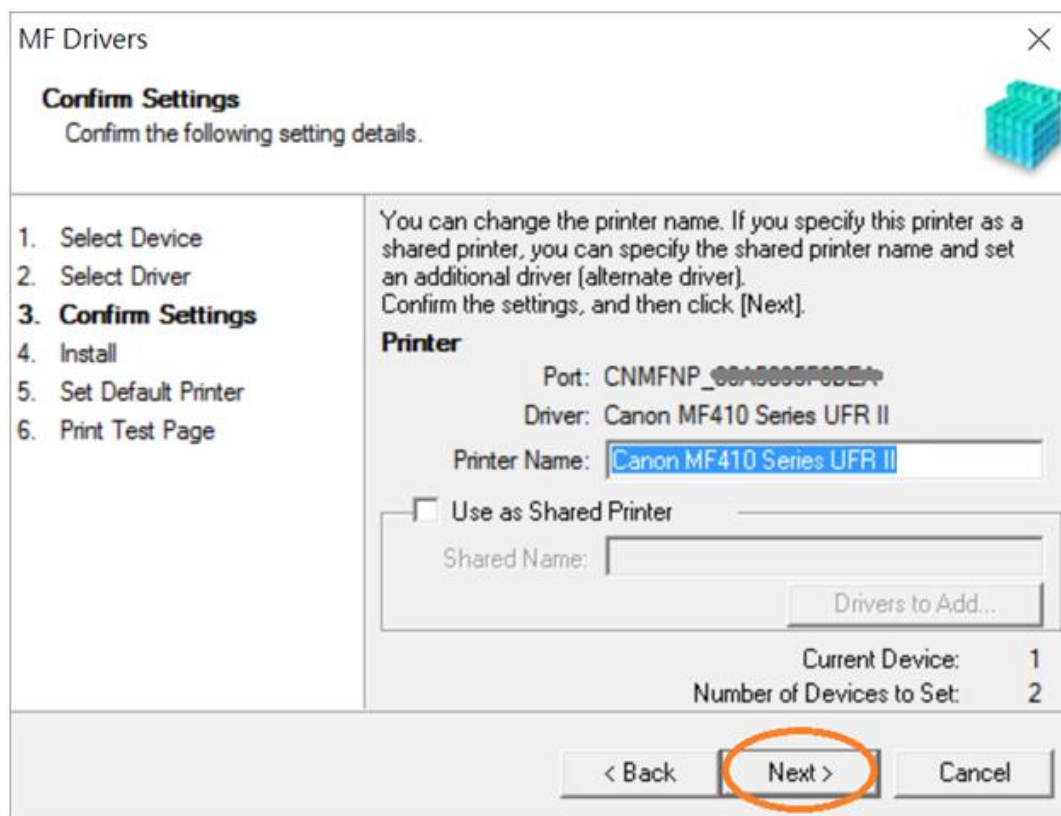


19. 選擇「UFR II Printer Driver」（以 MF410 Series 為例子），按「Next >」

Select “UFR II Printer Driver” (MF410 Series as example), click “Next >”



20. 按「Next >」（以 MF410 Series 為例子）
Click “Next >” (MF410 Series as example)



The dialog box is titled "MF Drivers" and "Confirm Settings". It contains a list of steps on the left: 1. Select Device, 2. Select Driver, 3. Confirm Settings (highlighted), 4. Install, 5. Set Default Printer, 6. Print Test Page. The main area shows instructions for changing the printer name and a "Printer" section with fields for Port (CNMFNP_00A0000F000E), Driver (Canon MF410 Series UFR II), and Printer Name (Canon MF410 Series UFR II). There is a checkbox for "Use as Shared Printer" and a "Shared Name" field. At the bottom right, it shows "Current Device: 1" and "Number of Devices to Set: 2". The "Next >" button is circled in orange.

MF Drivers

Confirm Settings
Confirm the following setting details.

1. Select Device
2. Select Driver
3. **Confirm Settings**
4. Install
5. Set Default Printer
6. Print Test Page

You can change the printer name. If you specify this printer as a shared printer, you can specify the shared printer name and set an additional driver (alternate driver). Confirm the settings, and then click [Next].

Printer

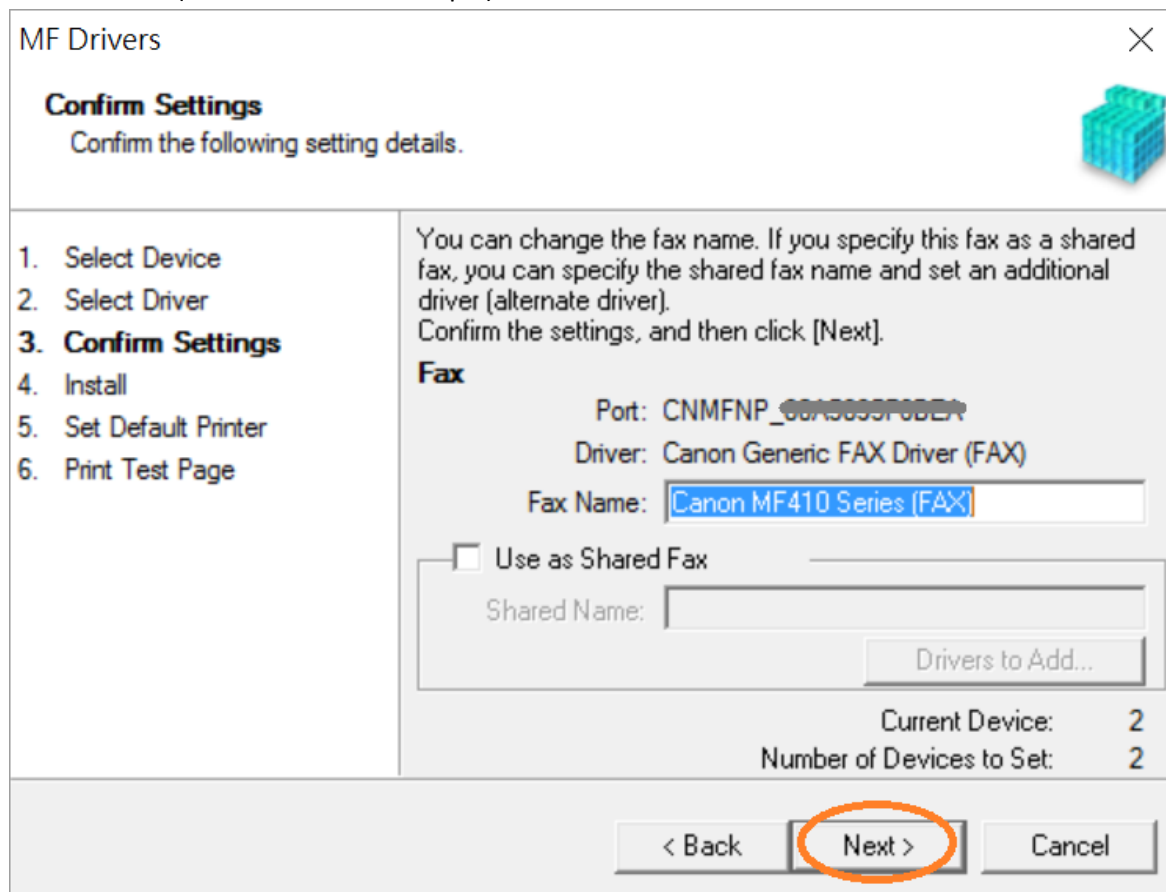
Port: CNMFNP_00A0000F000E
Driver: Canon MF410 Series UFR II
Printer Name: Canon MF410 Series UFR II

☐ Use as Shared Printer
Shared Name:
Drivers to Add...

Current Device: 1
Number of Devices to Set: 2

< Back Next > Cancel

21. 按「Next >」（以 MF410 Series 為例子）
Click “Next >” (MF410 Series as example)



The dialog box is titled "MF Drivers" and "Confirm Settings". It contains a list of steps on the left: 1. Select Device, 2. Select Driver, 3. Confirm Settings (highlighted), 4. Install, 5. Set Default Printer, 6. Print Test Page. The main area shows instructions for changing the fax name and a "Fax" section with fields for Port (CNMFNP_00A0000F000E), Driver (Canon Generic FAX Driver (FAX)), and Fax Name (Canon MF410 Series (FAX)). There is a checkbox for "Use as Shared Fax" and a "Shared Name" field. At the bottom right, it shows "Current Device: 2" and "Number of Devices to Set: 2". The "Next >" button is circled in orange.

MF Drivers

Confirm Settings
Confirm the following setting details.

1. Select Device
2. Select Driver
3. **Confirm Settings**
4. Install
5. Set Default Printer
6. Print Test Page

You can change the fax name. If you specify this fax as a shared fax, you can specify the shared fax name and set an additional driver (alternate driver). Confirm the settings, and then click [Next].

Fax

Port: CNMFNP_00A0000F000E
Driver: Canon Generic FAX Driver (FAX)
Fax Name: Canon MF410 Series (FAX)

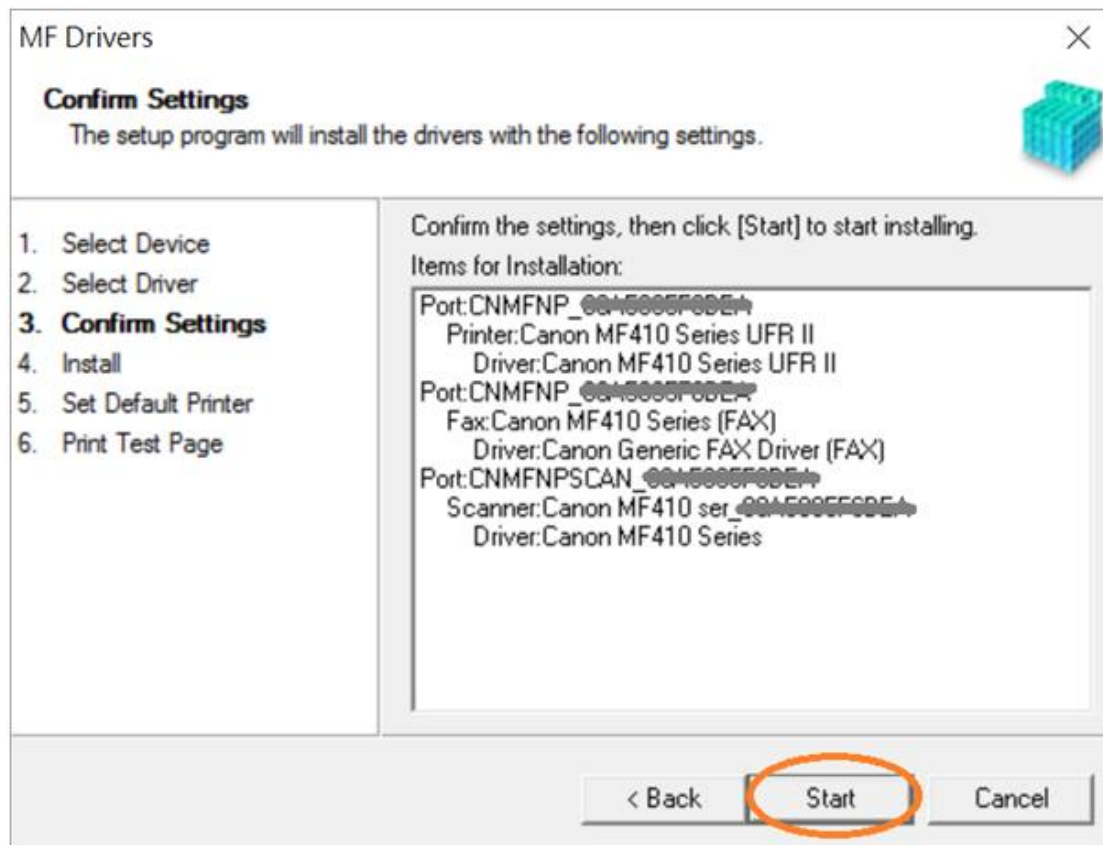
☐ Use as Shared Fax
Shared Name:
Drivers to Add...

Current Device: 2
Number of Devices to Set: 2

< Back Next > Cancel

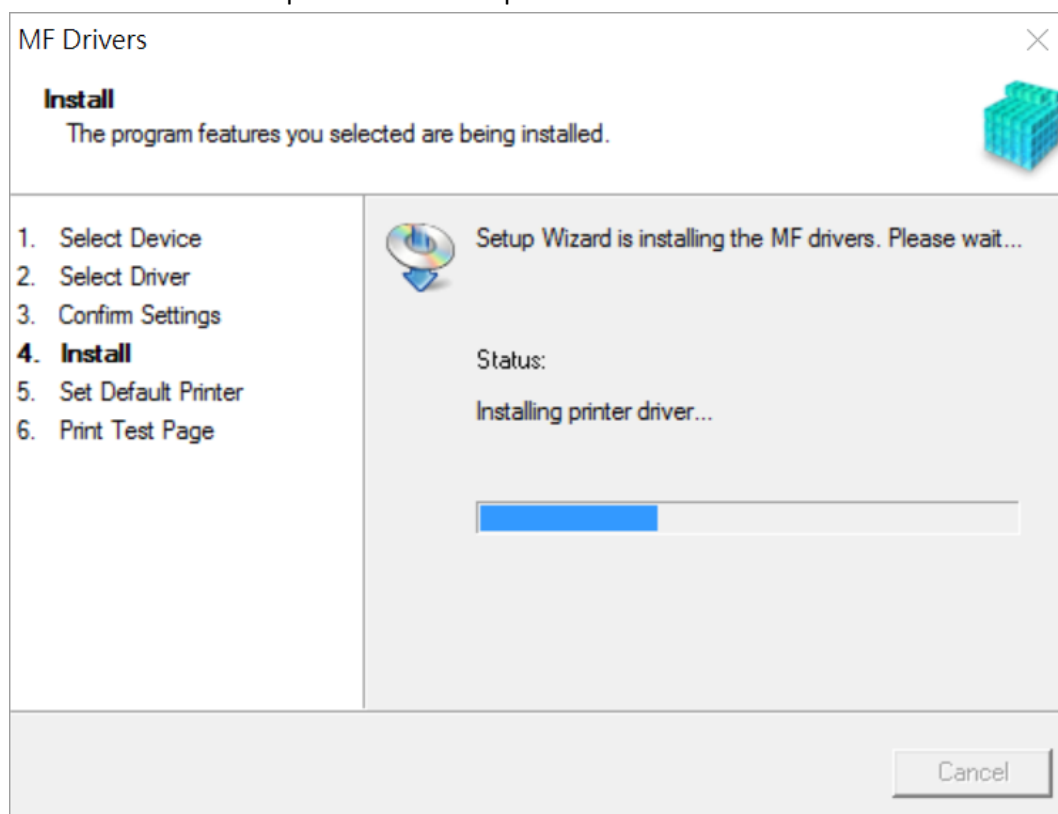
22. 按「Start」（以 MF410 Series 為例子）

Click “Start>” (MF410 Series as example)

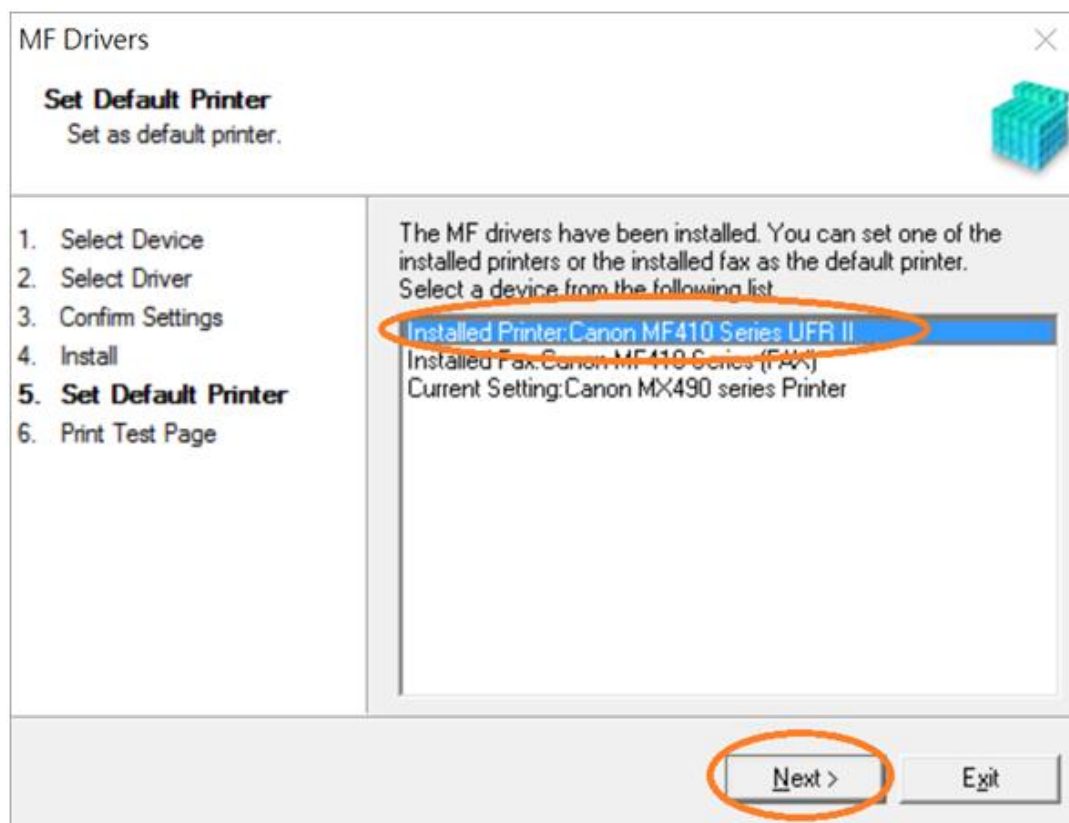


23. 請等待安裝精靈成完安裝

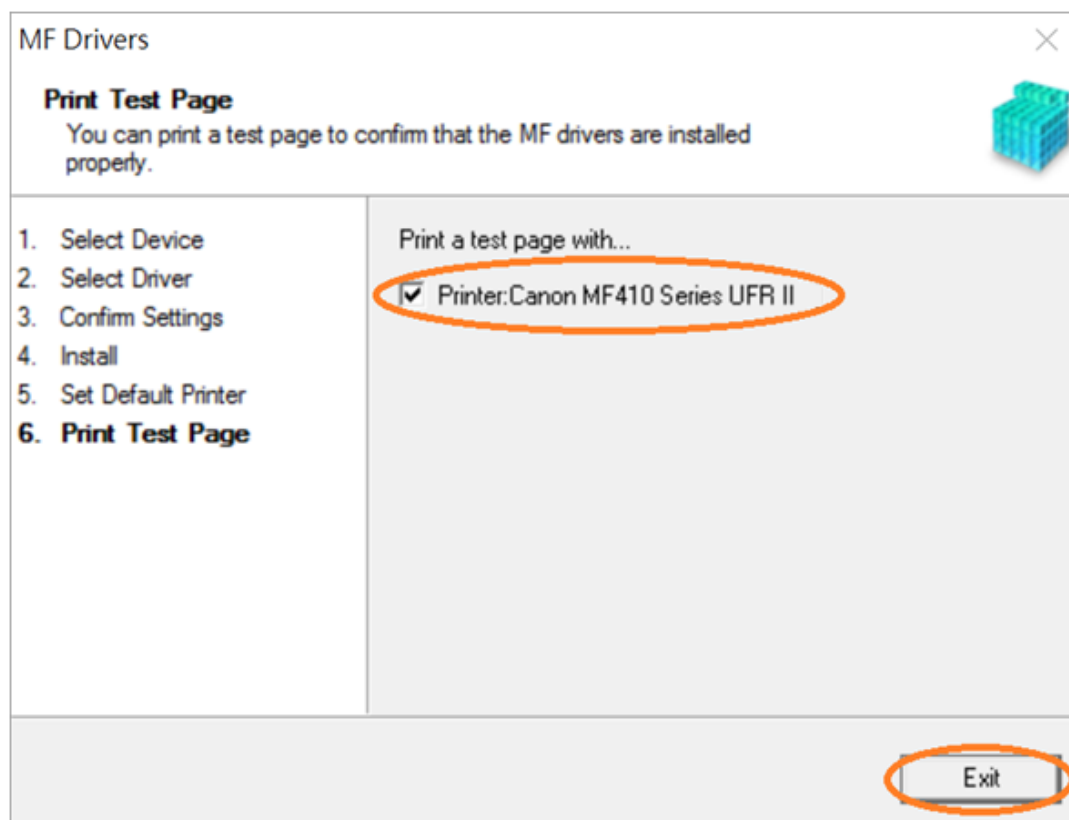
Please wait for the setup wizard to accomplish installation



24. 選擇「Installed Printer: Canon MF520 Series UFR II」（以 MF410 Series 為例子），按「Next >」
Select "Installed Printer: Canon MF520 Series UFR II" (MF410 Series as example), click "Next >"



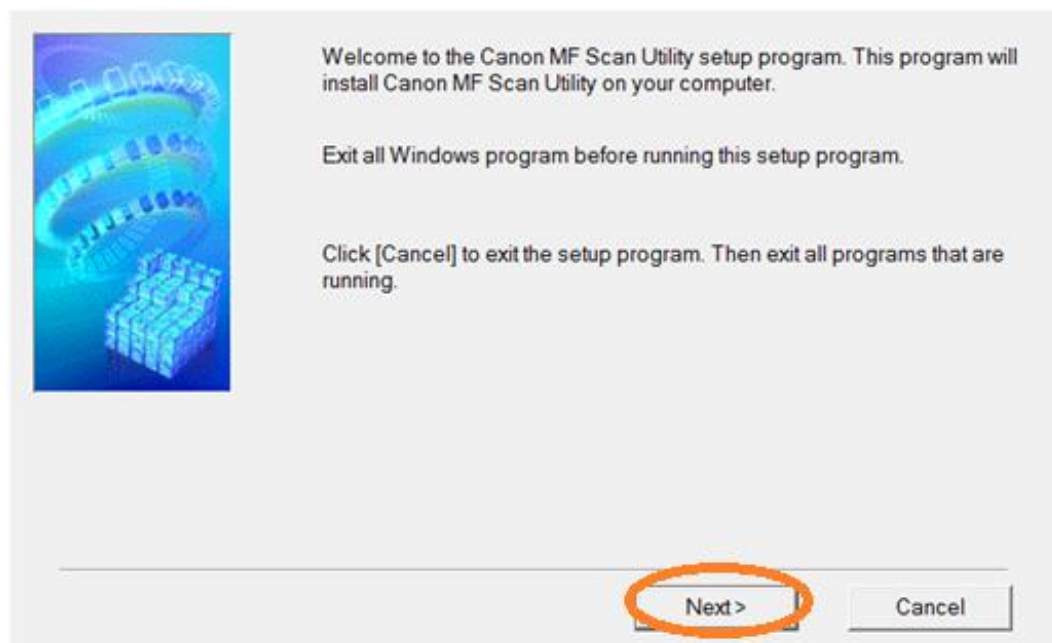
25. 可易選「Printer: Canon MF520 Series UFR II」以（MF410 Series 為例子）進行列印測試頁，按「Exit」
Can check the box at "Printer: Canon MF520 Series UFR II" (MF410 Series as example) to print a test page, click "Exit"



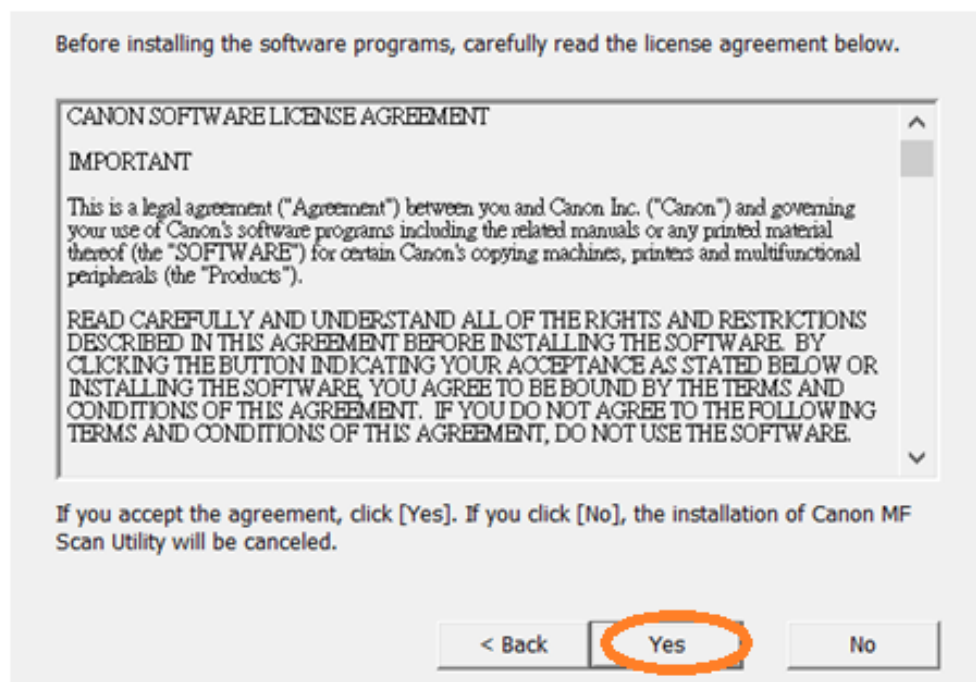
安裝掃描軟件MF Scan Utility

MF Scan Utility installation procedure

26. 執行檔案〔winmfscanutilityvxxxx.exe〕按「Next」
Run the file [winmfscanutilityvxxxx.exe], click “Next”



27. 按「Yes」
Click “Yes”



28. 等待安裝程序完成

Waiting for the installation progress

Install

C:\...\MF Scan Utility\jcudt40.dll



29. 按「Complete」

Click "Complete"



Installation of Canon MF Scan Utility completed successfully.

Click [Complete] to exit the setup program.

Complete

-完-

-End-