

LBP162dw 在 Windows 透過 USB 連線連接印表機之驅動程式步驟
Driver installation procedure for LBP162dw in Windows (Via USB)

****注意: 安裝驅動程式前請勿接駁 USB 線，以免系統發生錯誤****
**** Please don't plug the USB cable until the driver asked to do so****

下載及安裝步驟

Driver download and Installation procedure

1. 如電腦使用 Windows 64 位元系統，請下載：

<http://support-hk.canon-asia.com/contents/HK/EN/0100943301.html>

如電腦使用 Windows 32 位元系統，請下載：

<http://support-hk.canon-asia.com/contents/HK/EN/0100943201.html>

Click the link(s) below to download the printer driver:

If computer is running Windows 64 bit system, please click the link below:

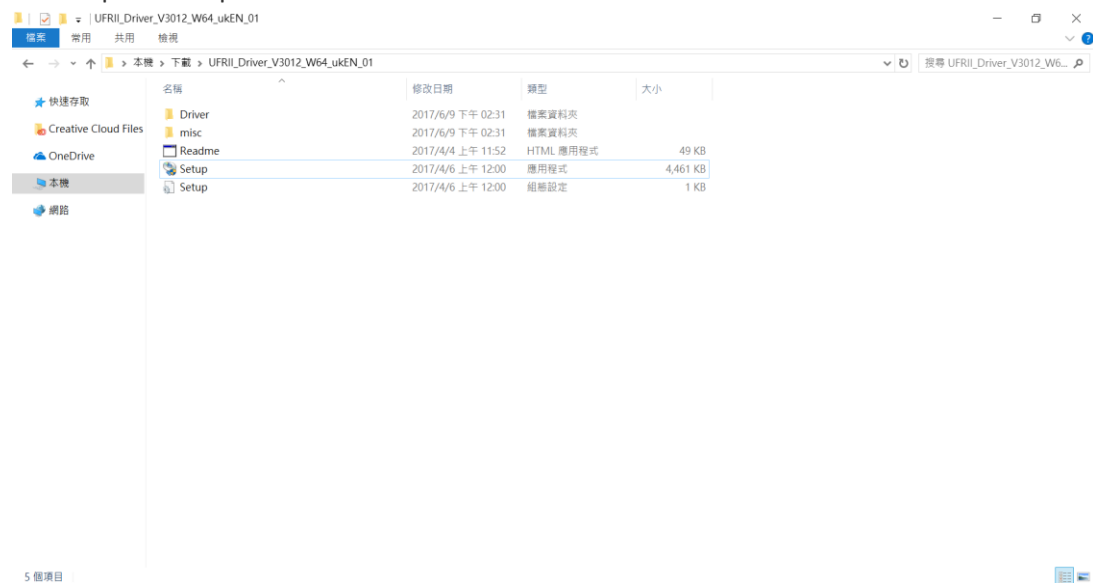
<http://support-hk.canon-asia.com/contents/HK/EN/0100943301.html>

If computer is running Windows 32 bit system, please click the link below:

<http://support-hk.canon-asia.com/contents/HK/EN/0100943201.html>

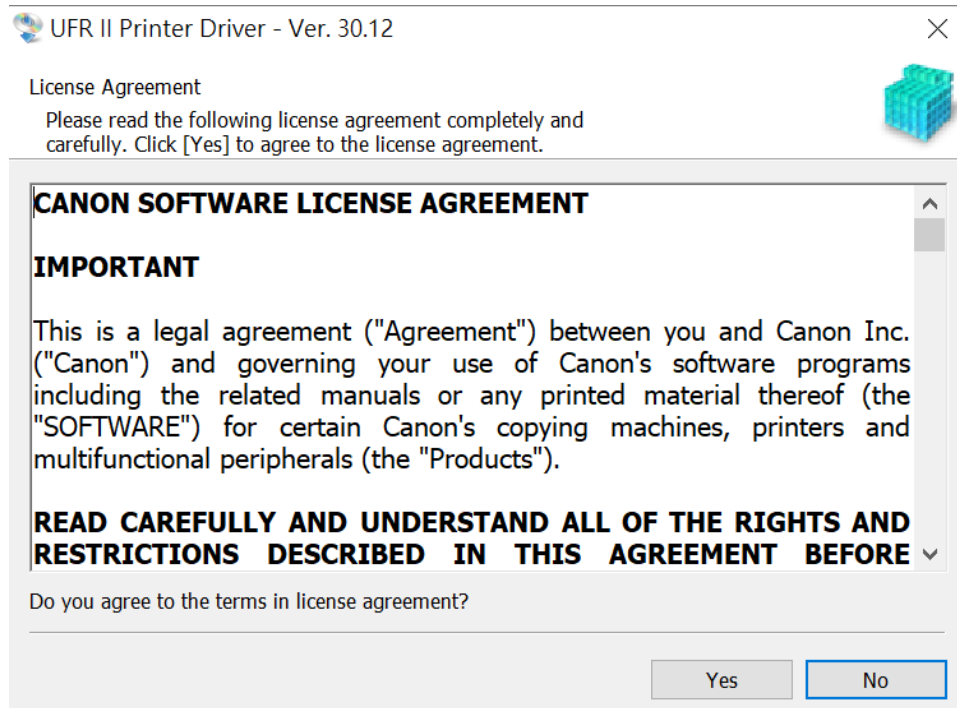
2. 下載的文件以自解壓縮檔檔案(.exe 格式)保存在指定的文件夾中，打開文件解壓縮。將在同一文件夾中創建新文件夾。新文件夾的名稱與解壓縮文件的名稱相同，進入新文件夾開啟「Setup.exe」開始安裝

Open the downloaded file, a same name new folder will be created. Go into new folder open "Setup.exe" start installation"



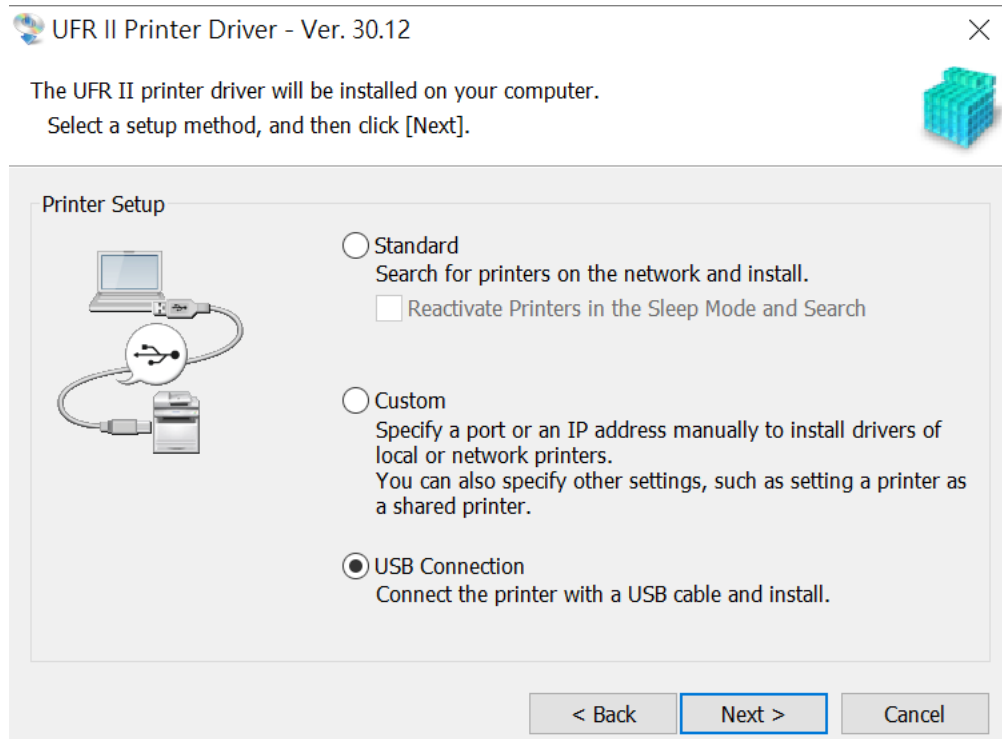
3. 選擇「Yes」

Choose "Yes"



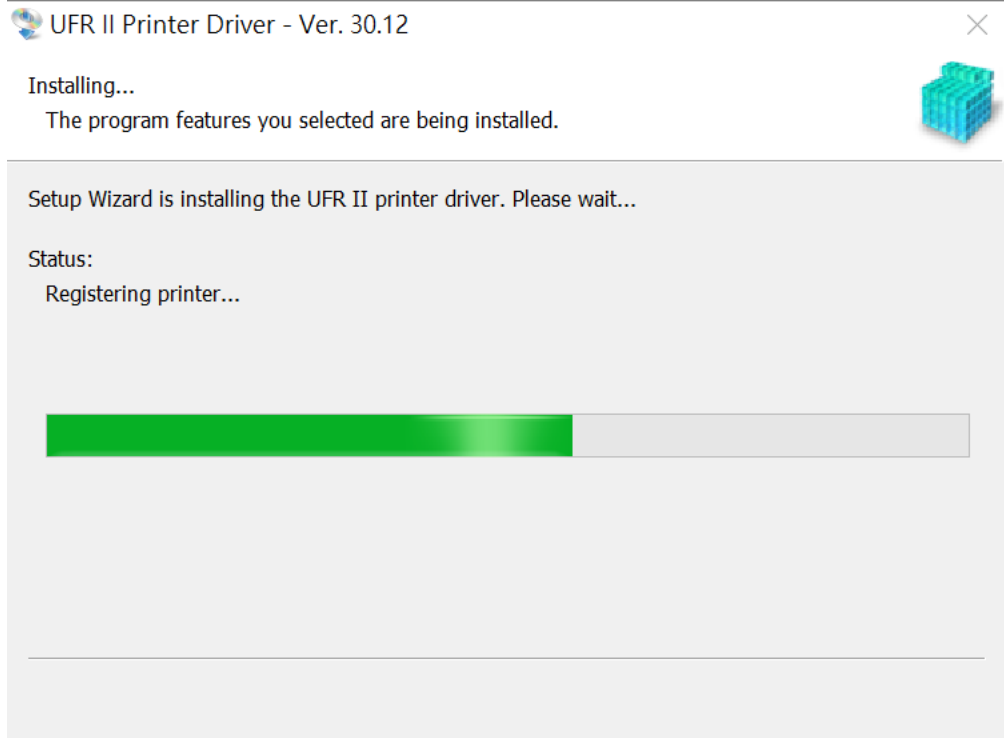
4. 選擇「USB Connection」，按「Next」

Choose "USB Connection", press "Next"



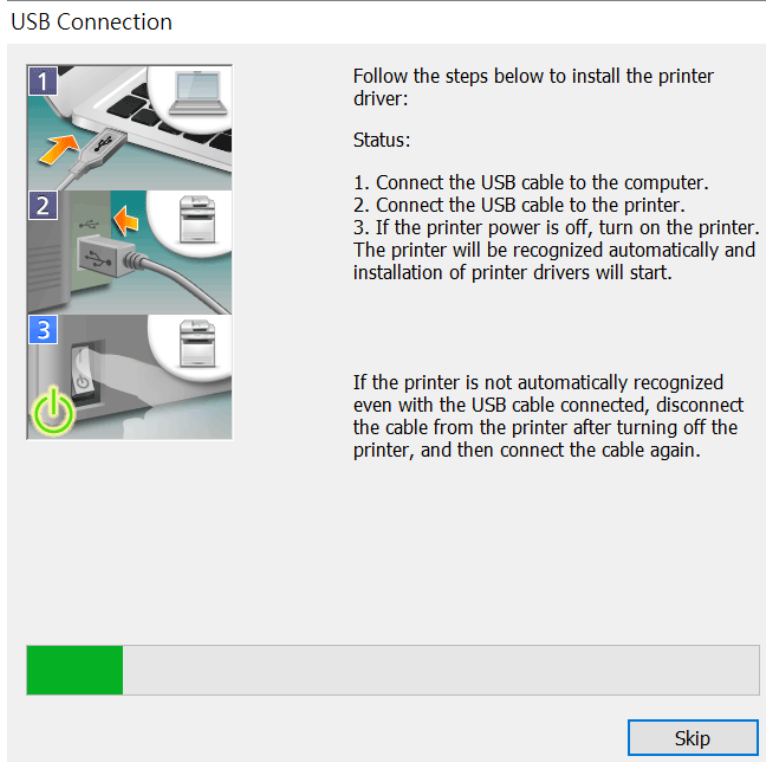
5. 等待安裝程序完成

Wait for the installation progress



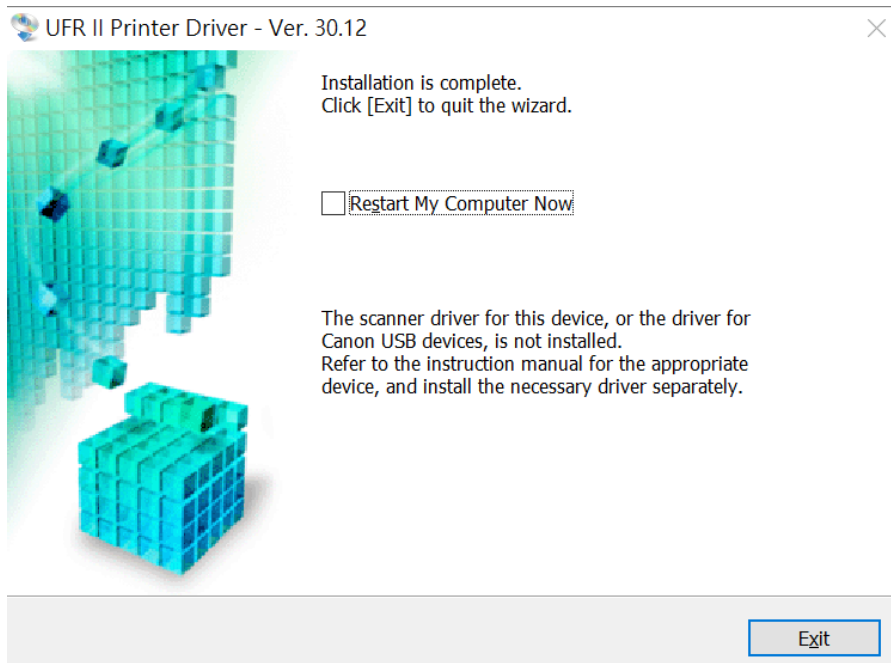
6. 接駁 USB 線及開啟印表機

Connect device with USB cable and switch on the printer



7. 成功偵測印表機後按「Exit」完成安裝

Click "Exit" to finish installation after device detected by computer



-完-
-End-