

LBP654Cx在Windows透過LAN連線連接印表機之驅動程式步驟
Driver installation procedure for LBP654Cx in Windows (Via Wired LAN)

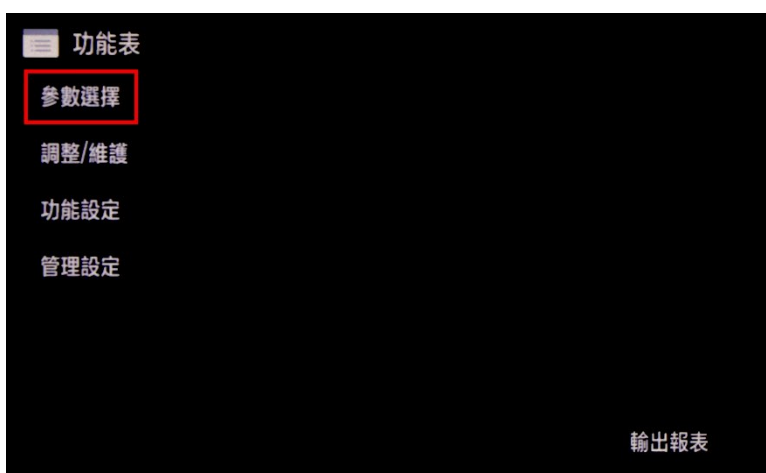
先將打印機連接到網路，詳細可參考以下步驟

Connect printer to network router first, refer to following procedure

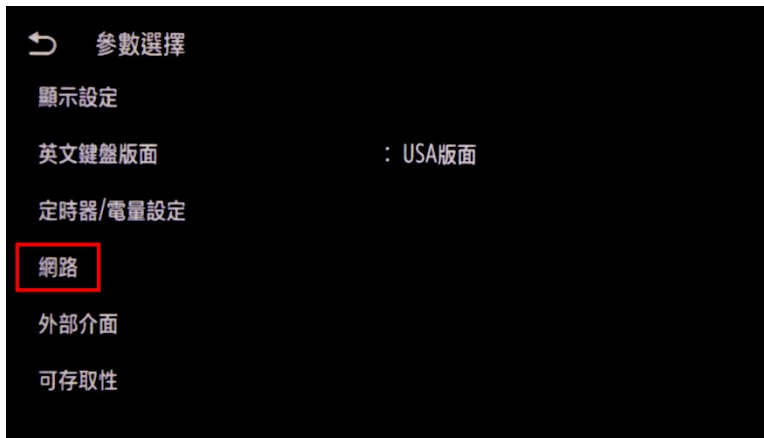
1. 開啟印表機
Switch on the Printer
2. 在主畫面中點選「功能表」
Tap “Menu” in the Home Screen



3. 點選「參數選擇」
Tap “Preferences”



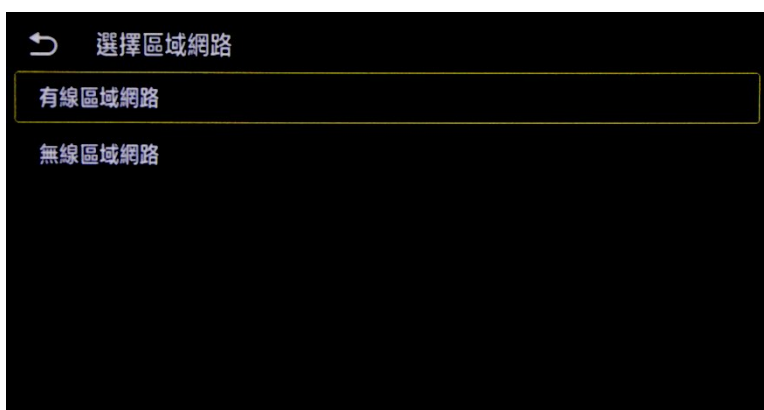
4. 點選「網路」
Tap “Network Settings”



5. 點選「選擇有線 / 無線區域網路」
Tap “Select Wired / Wireless LAN”



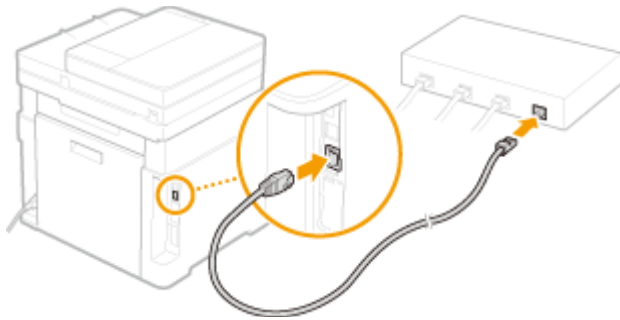
6. 點選「有線區域網路」
Tap “Wired LAN”



7. 使用區域網路纜線將本機連接到路由器

推入接頭，直至聽到喀嗒聲

Connect the machine to a router by using a LAN cable, push the connector in until it clicks into place



等待約 2 分鐘，直到本機的 IP 位址設定完成

Wait approximately 2 minutes until the IP address settings of the machine completed

下載及安裝步驟

Driver download and installation procedure

8. 到佳能網站<http://support-hk.canon-asia.com/>，選擇相關的印表機型號及下載印表機的驅動程式

Go to: <http://support-hk.canon-asia.com/> , select related printer model, and download the printer driver

SUPPORT & DOWNLOAD

Select your product from the menus below:

1. Choose a product category

Laser Printers ▼

2. Choose a product series

ImageCLASS ▼

3. Choose a product model

imageCLASS LBP654Cx ▼

4. Choose type of document

Drivers & Softwares ▼

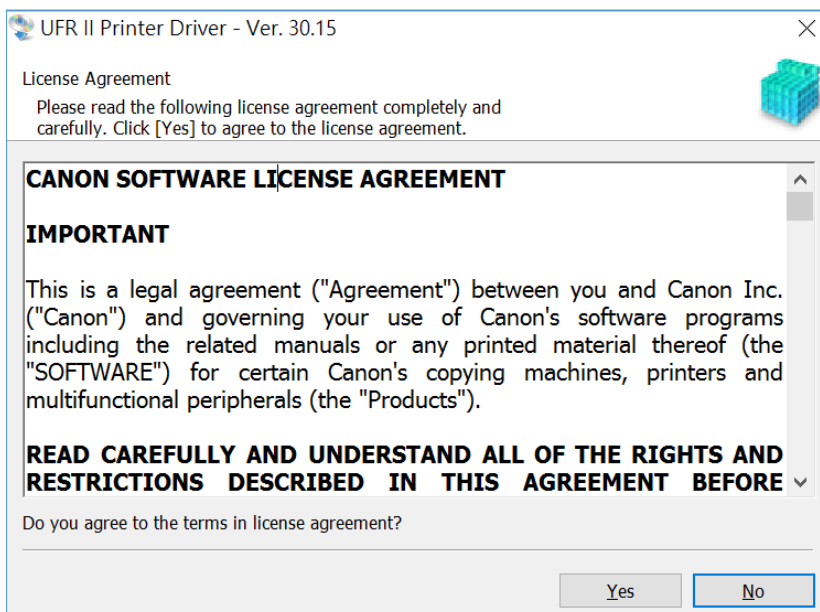
9. 選擇並下載以下檔案

Choose and download below files:

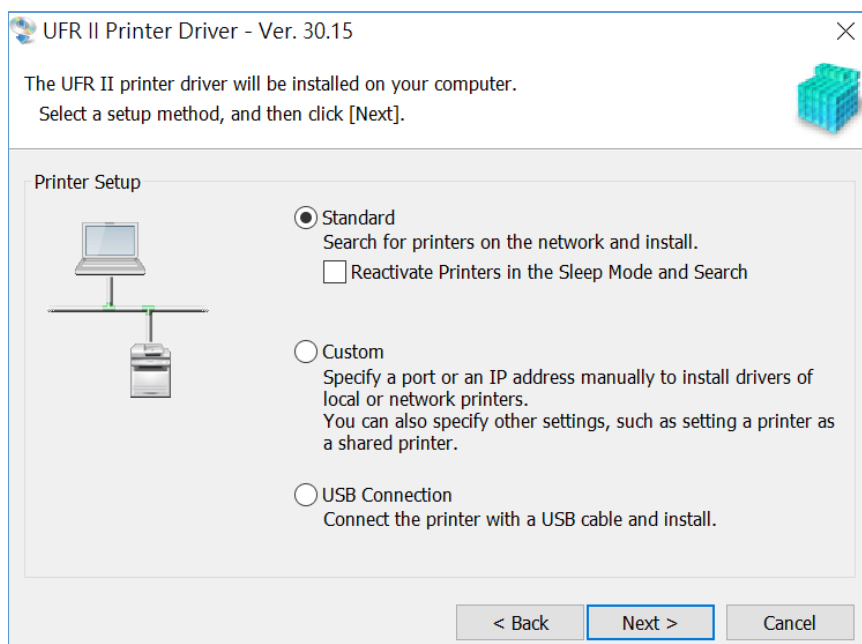
- [Windows x64bit] UFR II Printer Driver Vxx.xx

10. 執行檔案 [UFR II_Driver_Vxxxx_Wxx_ukEN_xx.exe] 按 「Yes」

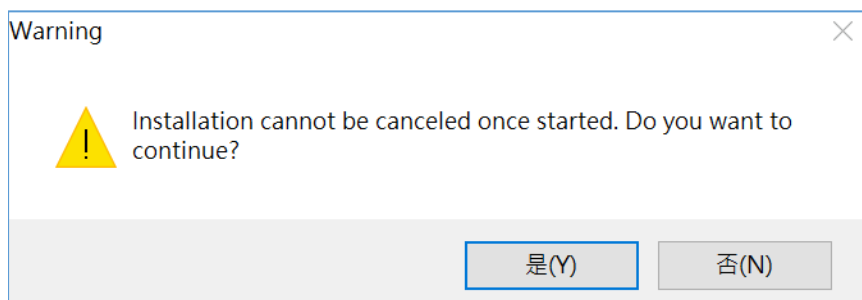
Run File [UFR II_Driver_Vxxxx_Wxx_ukEN_xx.exe], click “Yes”



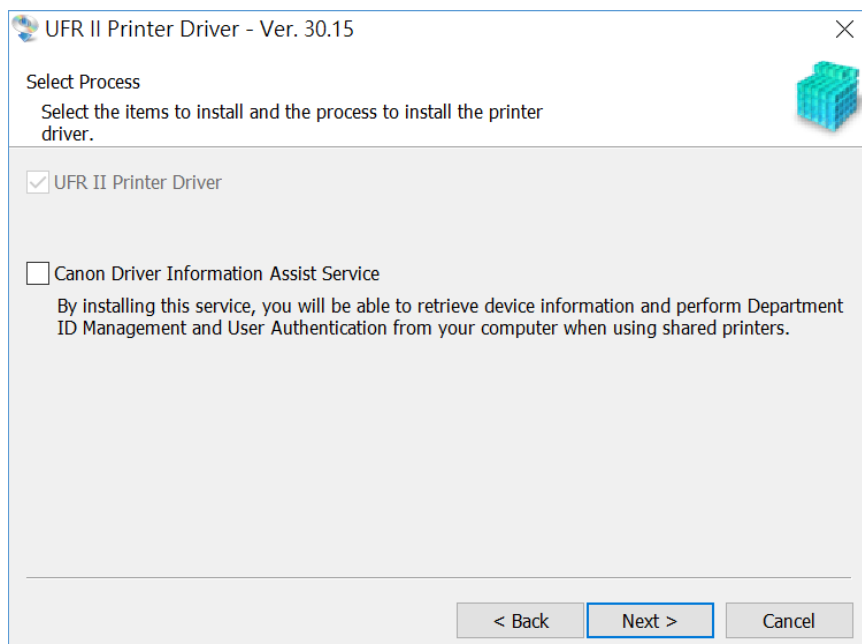
11. 選擇「Standard (for Network Models)」，按「Next」
Choose “Standard (for Network Models)”, click “Next”



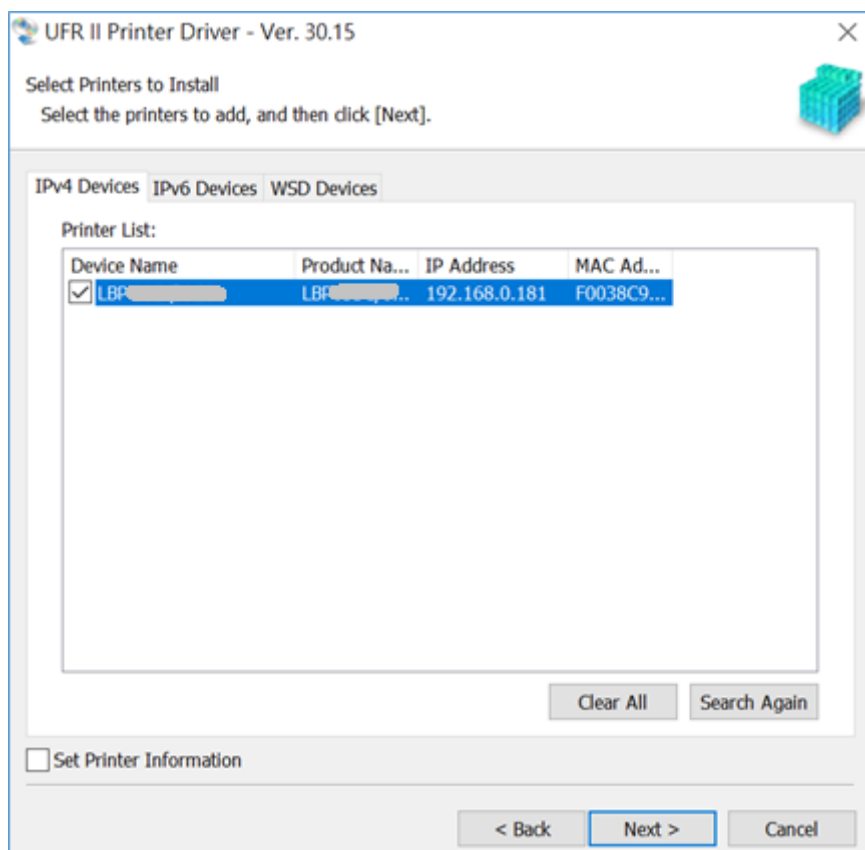
12. 按「是」
Click “Yes”



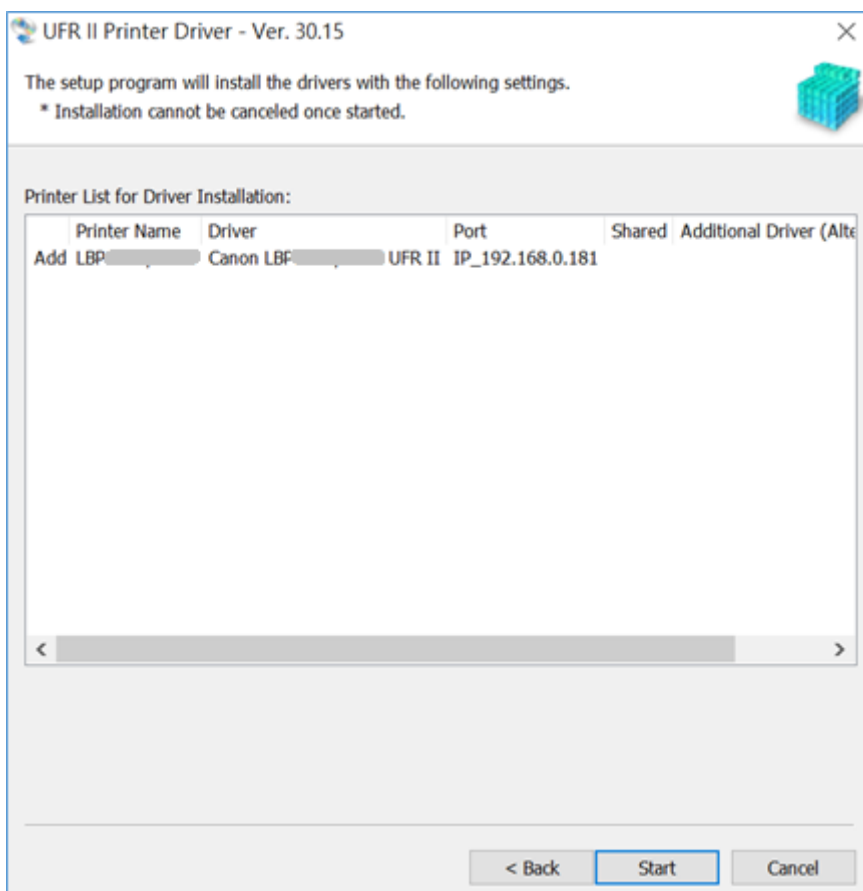
13. 按「Next」
Click “Next”



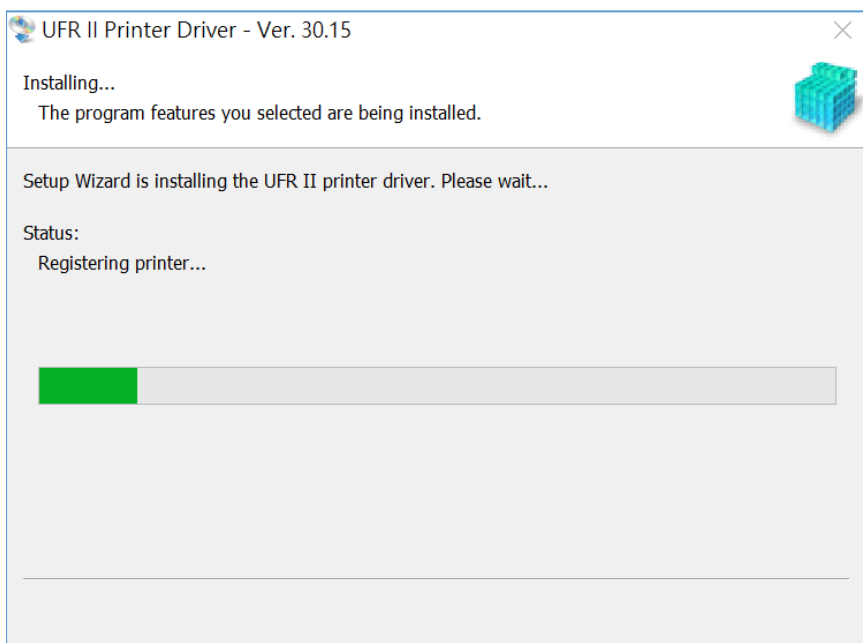
14. 程式會自動偵測網絡上的印表機，選擇後按「Next」
Program will automatic detect the network printer, choose printer and click “Next”



15. 按「Start」
Click “Start”

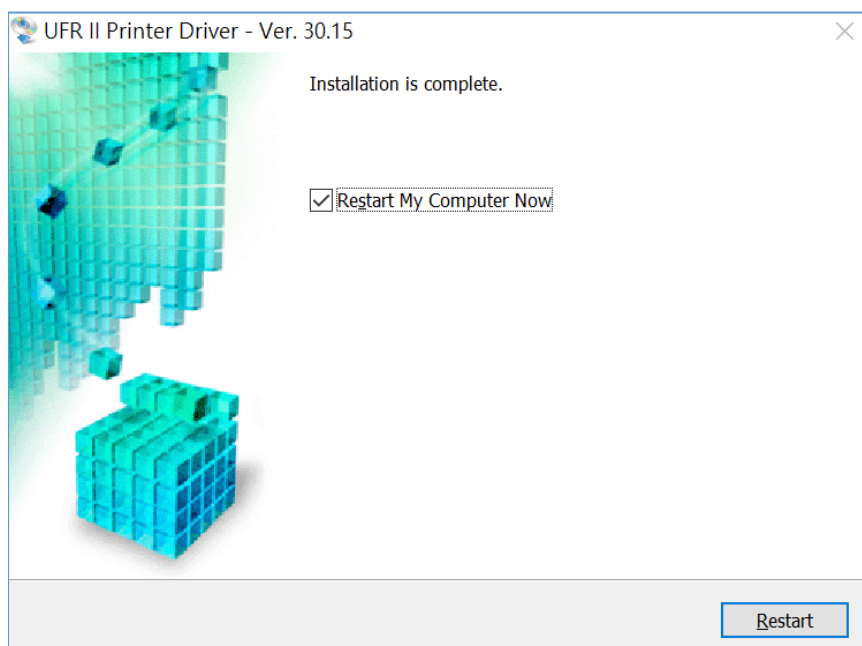


16. 等待安裝程序完成
Waiting for the installation progress



17. 安裝完成，按「Restart」

Installation is complete. Click “Restart”



-完-
-End-