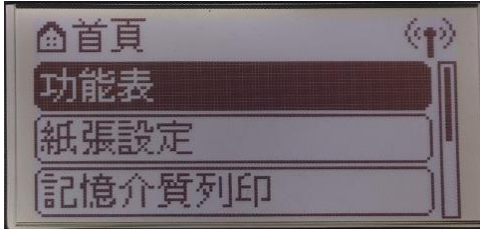


LBP613Cdw 在 Windows 透過無線 LAN 連線連接印表機之驅動程式步驟
Driver installation procedure for LBP613Cdw in Windows (Via Wi-Fi)

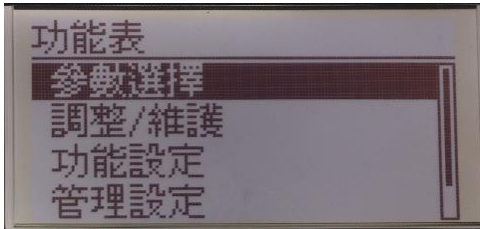
先將打印機連接到網路，詳細可參考以下步驟

Connect printer to network first, please refer to following procedure

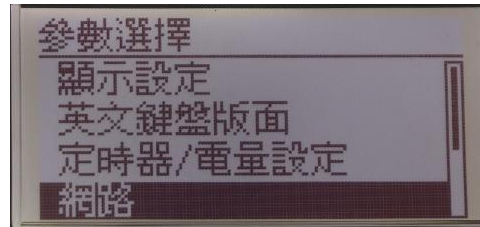
1. 開啟印表機
Switch on the Printer
2. 在主畫面中選擇「功能表」，再按「OK」
Choose "Menu" in the Home Screen, then press "OK"



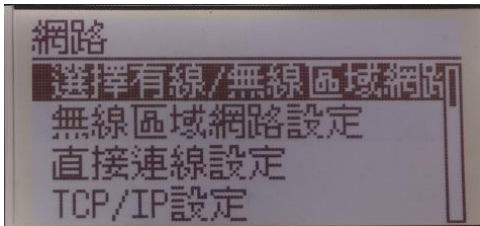
3. 選擇「參數選擇」，再按「OK」
Choose "Preferences", then press "OK"



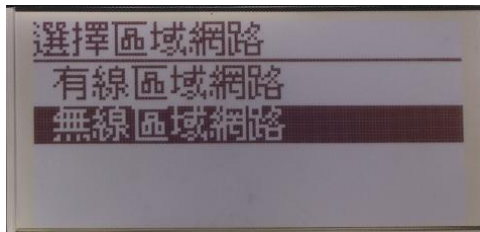
4. 選擇「網路」，再按「OK」
Choose "Network Settings", then press "OK"



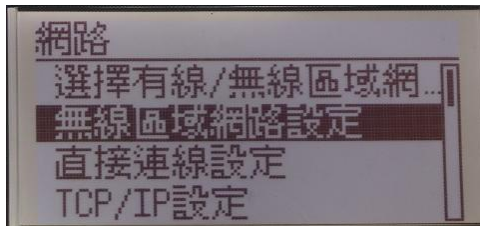
5. 選擇「選擇有線/無線區域網路」，再按「OK」
Choose "Select Wired / Wireless LAN", then press "OK"



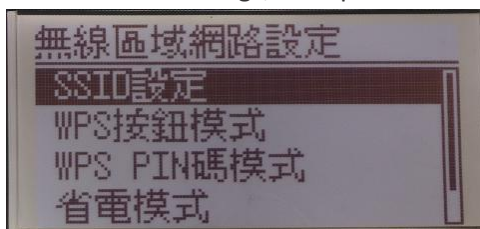
6. 選擇「無線區域網路」，再按「OK」
Select “Wireless LAN”, then press “OK”



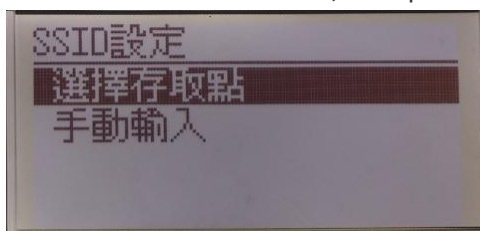
7. 選擇「無線區域網路設」，再按「OK」
Choose “Wireless LAN Setting”, then press “OK”



8. 選擇「SSID 設定」，再按「OK」
Choose “SSID Setting”, then press “OK”



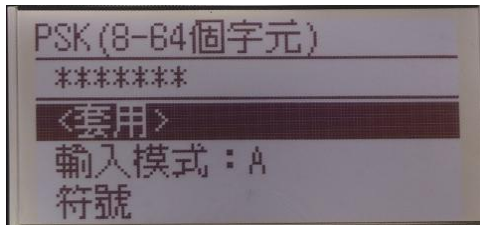
9. 選擇「選擇存取點」，再按「OK」
Select “Select Access Point”, then press “OK”



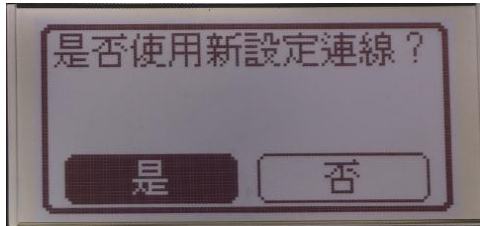
10. 選擇無線區域網路路由器，選擇與您記下的 SSID 相符的路由器
Select the router who's SSID matches the one that you have written down



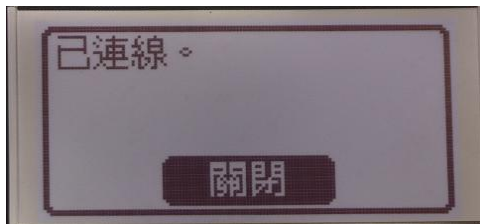
11. 使用數字鍵輸入網路金鑰（路由器密碼），然後點選「套用」
Enter the network key using the numeric keys, and select “Apply”



12. 點選「是」
Select “Yes” and press “OK”



13. 設定完成時，會顯示「已連線」，點選「關閉」
Wait until message “Connected” is displayed, Press OK to “Close”



等待約 2 分鐘，直到本機的 IP 位址設定完成

Wait approximately 2 minutes until the IP address settings of the machine are completed

下載及安裝步驟

Driver download and installation procedure

14. 到佳能網站 <https://hk.canon/en/support/imageCLASS%20LBP613Cdw/model>，下載印表機的驅動程式

Go to: <https://hk.canon/en/support/imageCLASS%20LBP613Cdw/model>, download the printer driver

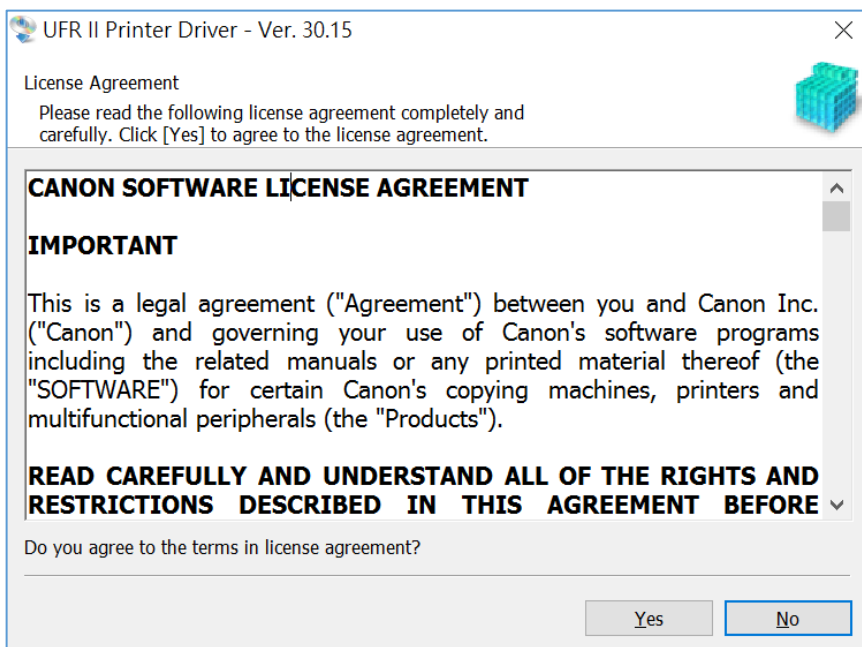
15. 選擇並下載以下檔案

Choose and download below file:

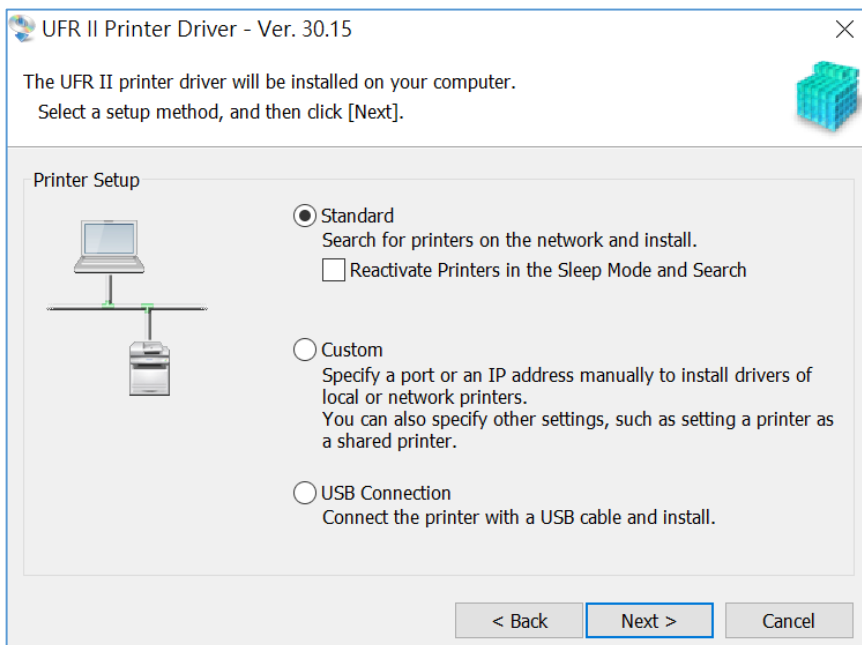
- 打印機驅動程式 / Printer Driver

[\[Windows x86bit\] UFR II Printer Driver Vxx.xx](#)

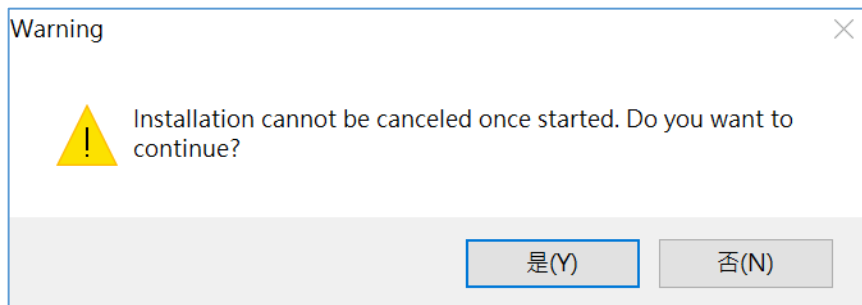
16. 執行檔案 [UFR II_Driver_Vxxxx_Wxx_ukEN_xx.exe] 按 「 Yes 」
Run File [UFR II_Driver_Vxxxx_Wxx_ukEN_xx.exe], click “Yes”



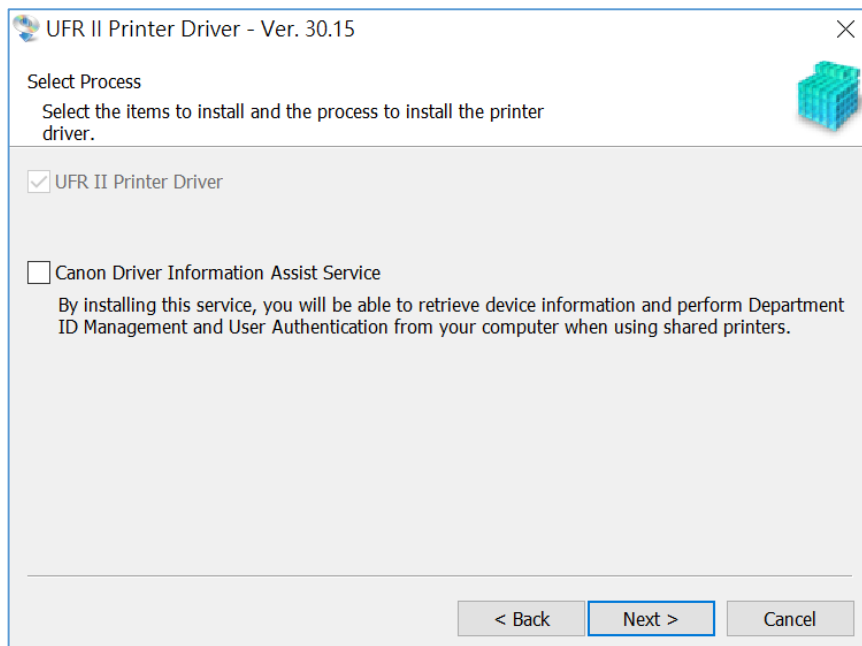
17. 選擇 「 Standard (for Network Models) 」 ， 按 「 Next 」
Choose “Standard (for Network Models)”, click “Next”



18. 按「是」
Click "Yes"

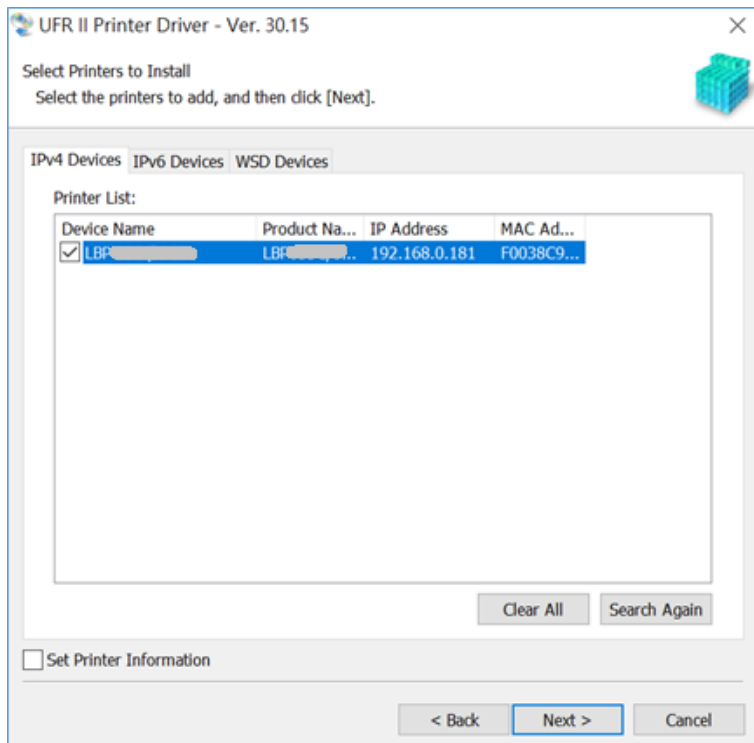


19. 按「Next」
Click "Next"



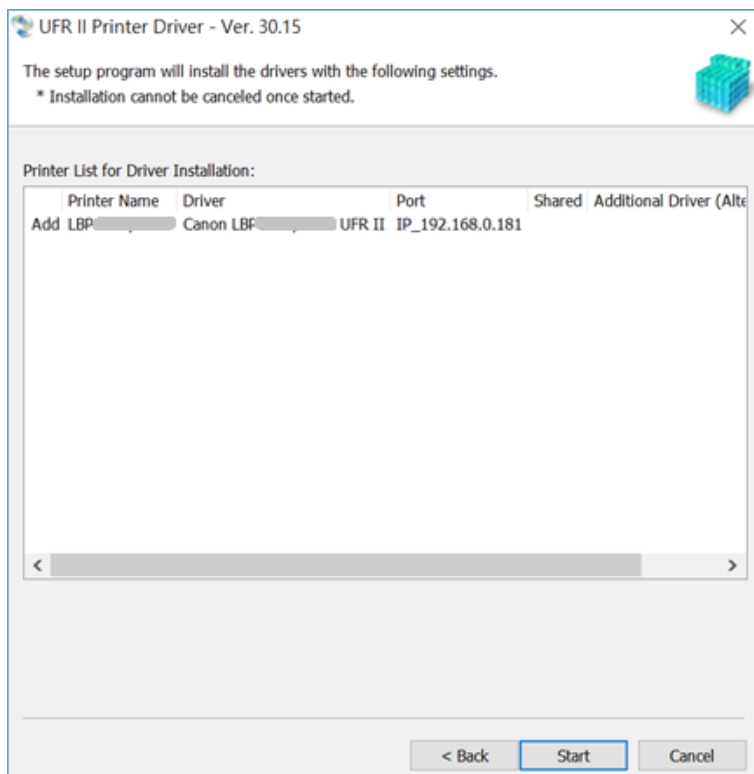
20. 程式會自動偵測網絡上的印表機，選擇後按「Next」

Program will automatic detect the network printer, choose printer and click "Next"



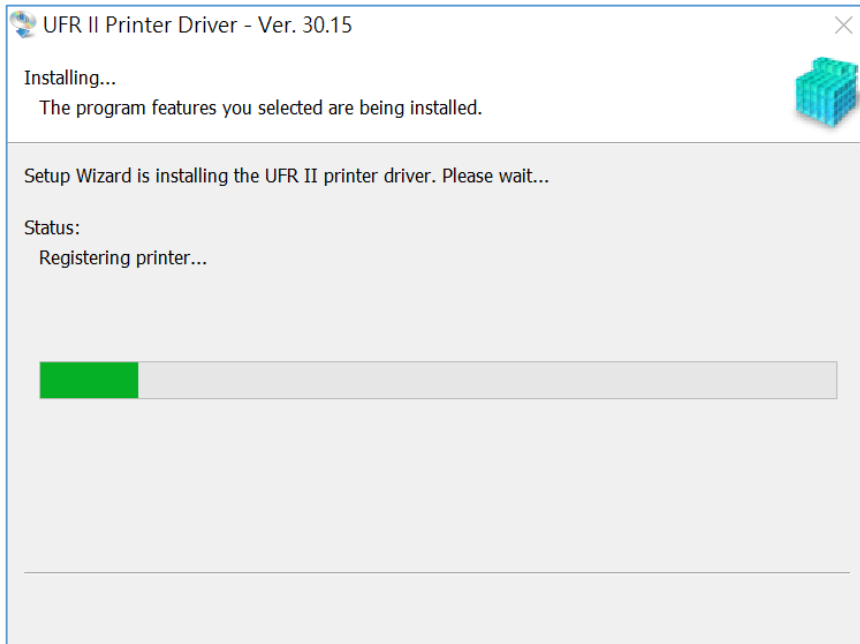
21. 按「Start」

Click "Start"



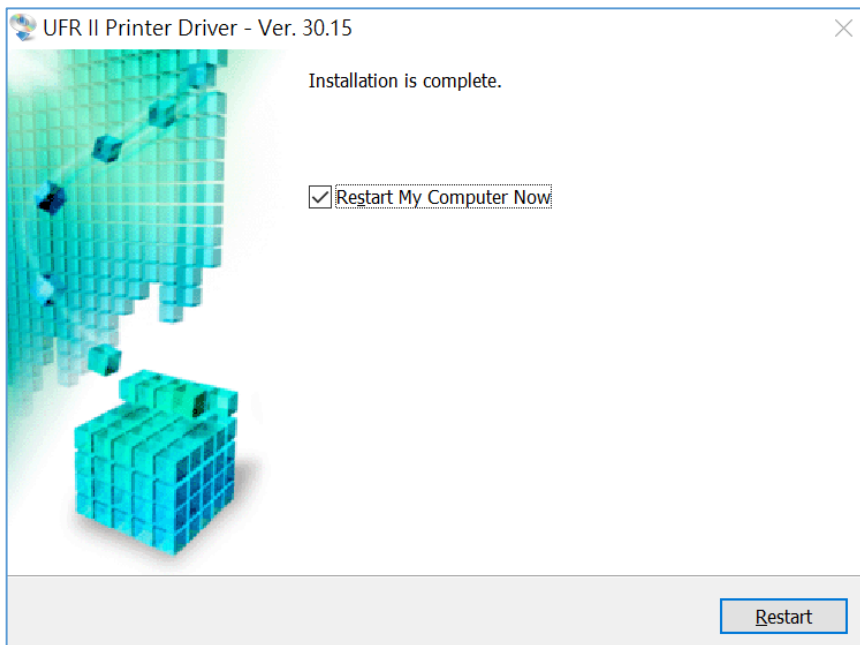
22. 等待安裝程序完成

Waiting for the installation progress



23. 安裝完成，按「Restart」

Installation is complete. Click "Restart"



-完-
-End-