

LBP613Cdw在Window 10 透過USB連線連接印表機之驅動程式步驟
Driver installation procedure for LBP613Cdw in Window 10 (Via USB)

****注意: 安裝驅動程式前請勿接駁USB線，以免系統發生錯誤****
**** Please don't plug the USB cable until the driver asked to do so****

下載及安裝步驟
Driver download and installation procedure

1. 到佳能網站<http://support-hk.canon-asia.com/>，選擇相關的印表機型號及下載印表機的驅動程式

Go to: <http://support-hk.canon-asia.com/> , select related printer model, and download the printer driver

SUPPORT & DOWNLOAD

Select your product from the menus below:

1. Choose a product category
2. Choose a product series
3. Choose a product model
4. Choose type of document

2. 選擇並下載以下檔案

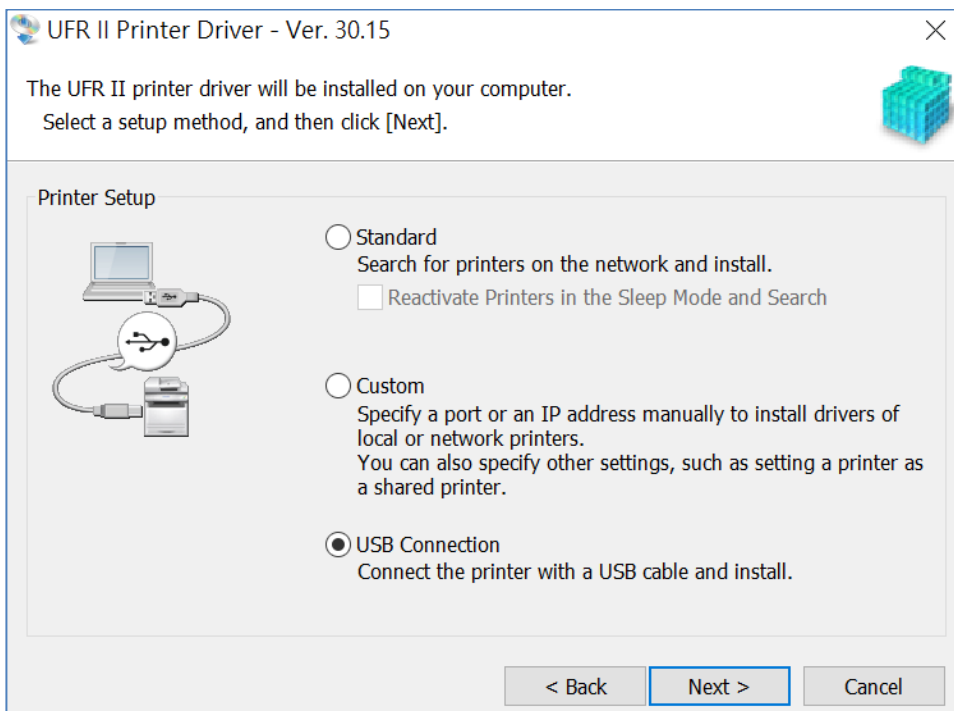
Choose and download below files

- 打印機驅動程式 : [UFR II Printer Driver Vxx]
- Printer Driver : [UFR II Printer Driver Vxx]

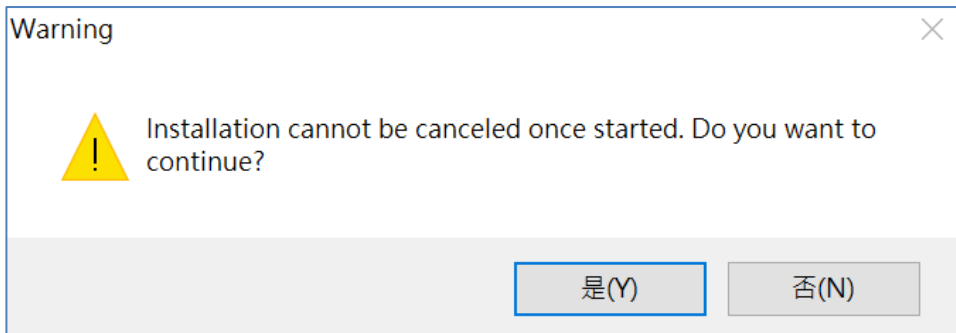
3. 下載完成後開啟檔案，按「Yes」
Open the downloaded file , Click “Yes”



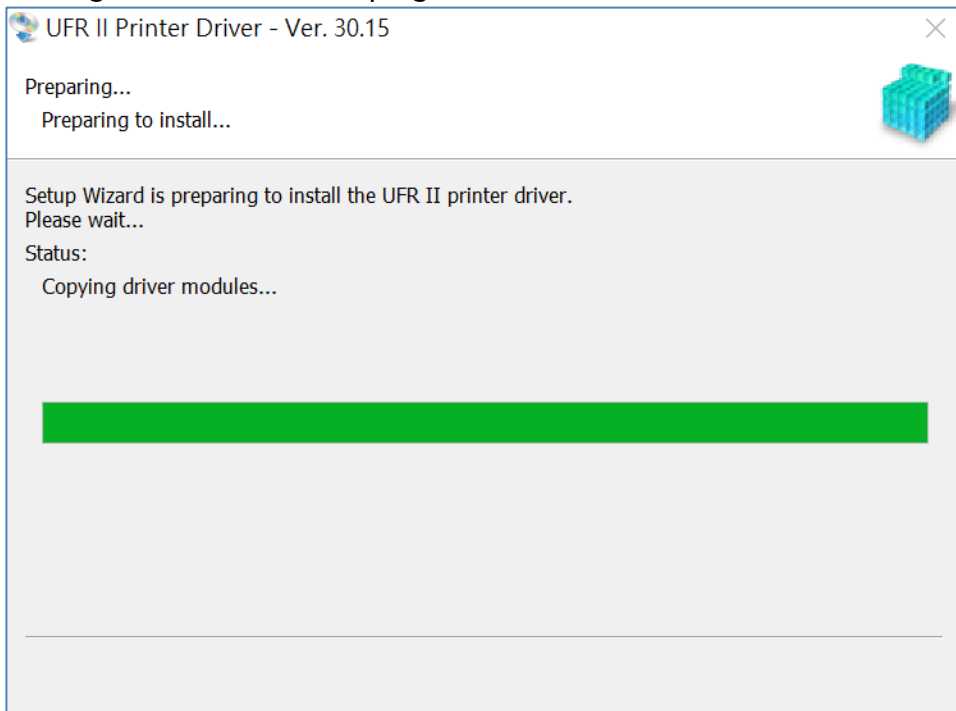
4. 選擇「USB Connection」然後按「Next」
Choose “USB Connection” and then Click “Next”



5. 按「是」
Click “Yes”

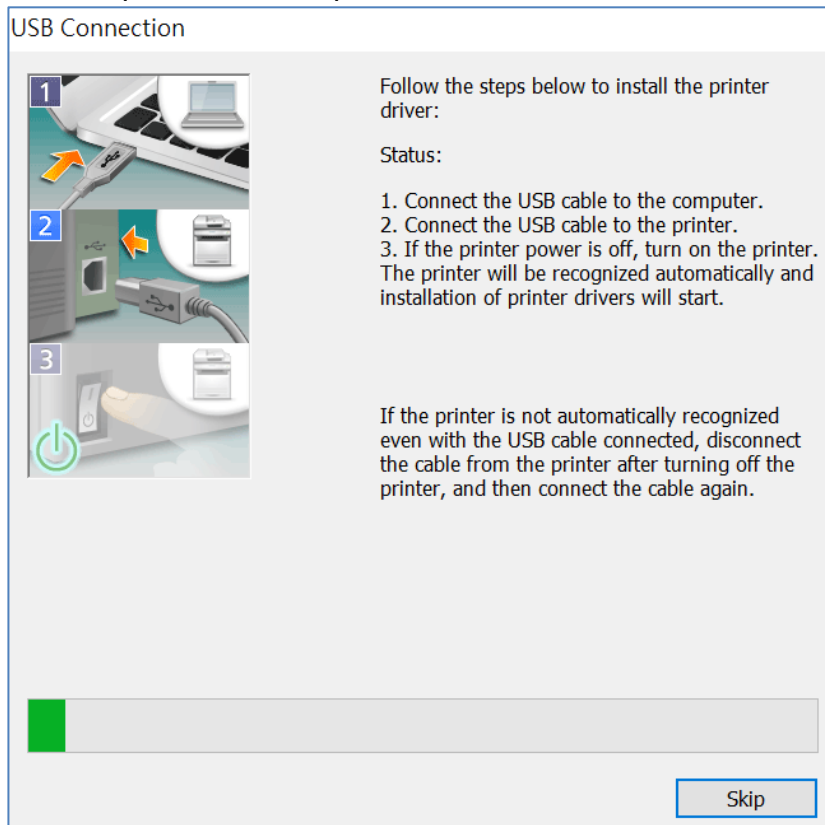


6. 等待安裝程序完成
Waiting for the installation progress



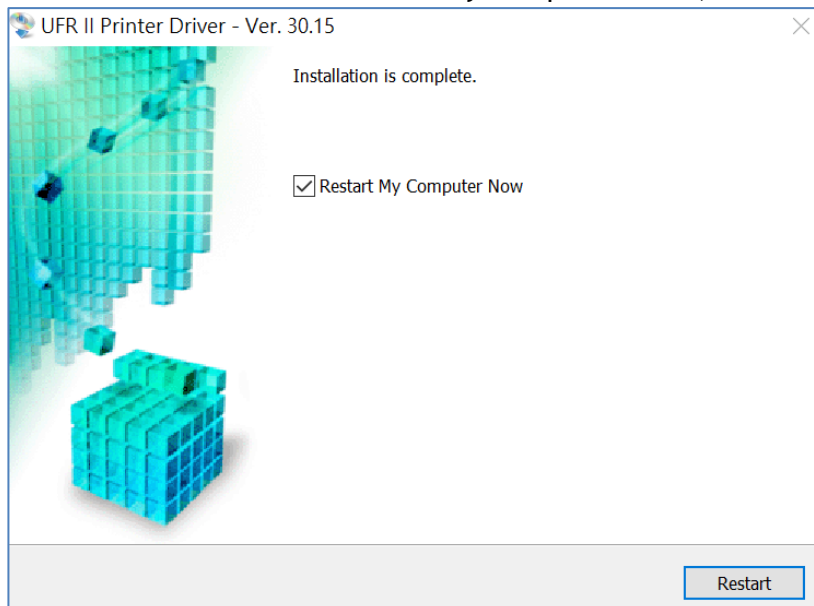
7. 以USB線接駁打印機及電腦，然後開啟打印機

Connect printer and computer with the USB cable, and then turn on the printer



8. 建議別選「Restart My Computer Now」，按「Restart」重新開機

We recommend to Click “Restart My Computer Now”, click “Restart” to reboot computer



-完-
-End-