

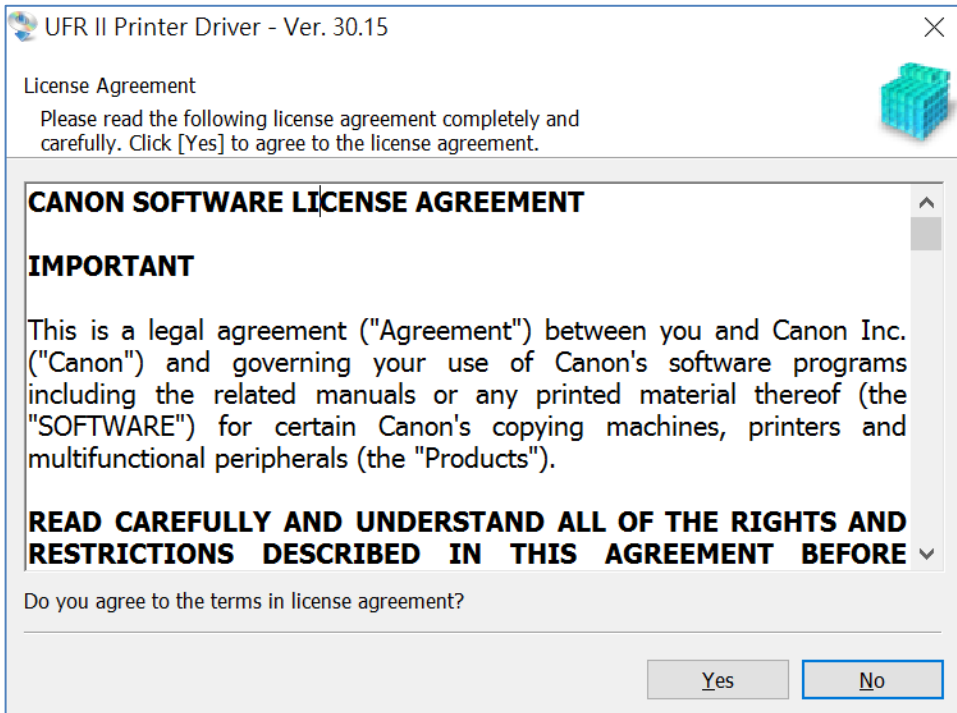
**LBP611Cn 在 Window 10 透過 USB 連線連接印表機之驅動程式步驟**  
**Driver installation procedure for LBP611Cn in Window 10 (Via USB)**

**\*\*注意: 安裝驅動程式前請勿接駁 USB 線，以免系統發生錯誤\*\***  
**\*\* Please don't plug the USB cable until the driver asked to do so\*\***

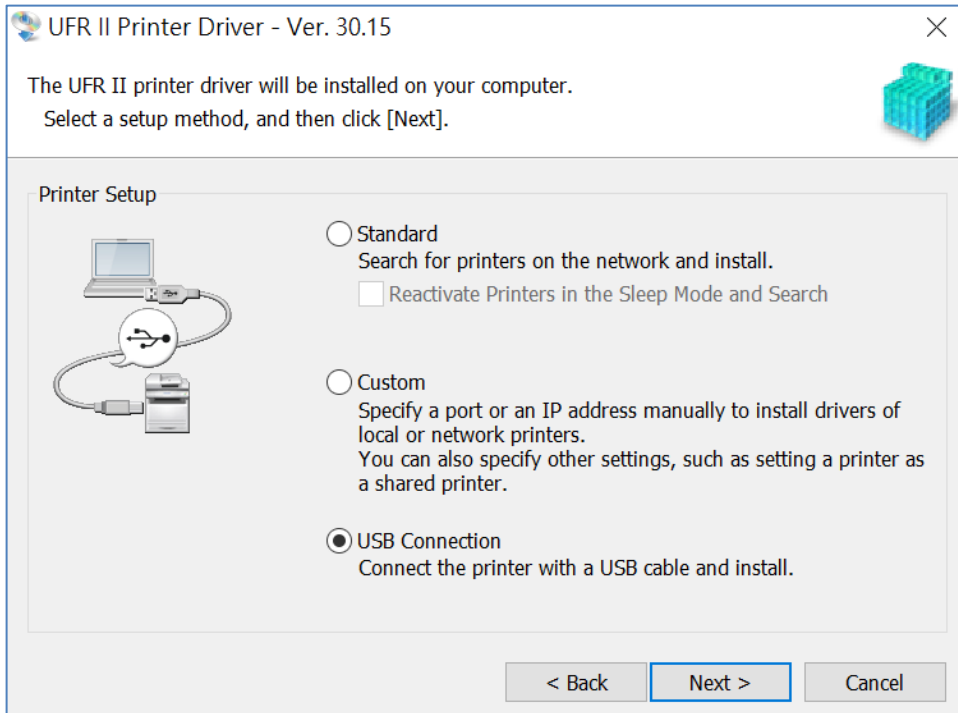
下載及安裝步驟

Driver download and installation procedure

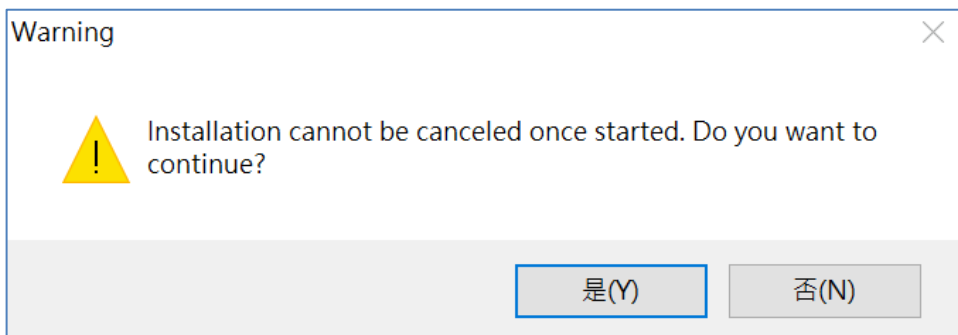
1. 到佳能網站 <https://hk.canon/en/support/imageCLASS%20LBP611Cn/model>，下載印表機的驅動程式  
Go to: <https://hk.canon/en/support/imageCLASS%20LBP611Cn/model>, download the printer driver
2. 選擇並下載以下檔案  
Choose and download below file:  
  
- 打印機驅動程式 / Printer Driver  
[\[Windows xxbit\] UFR II Printer Driver Vxx.xx](#)
3. 下載完成後開啟檔案，按「Yes」  
Open the downloaded file , Click "Yes"



4. 選擇「USB Connection」然後按「Next」  
Choose “USB Connection” and then Click “Next”

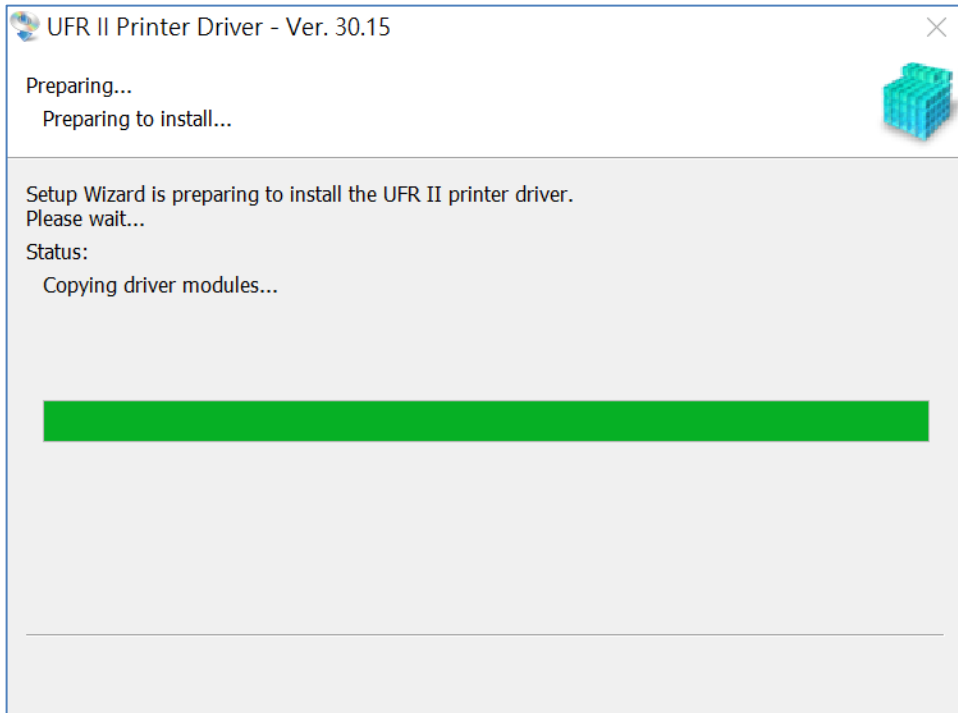


5. 按「是」  
Click “Yes”



6. 等待安裝程序完成

Waiting for the installation progress



7. 以 USB 線接駁打印機及電腦，然後開啟打印機

Connect printer and computer with the USB cable, and then turn on the printer

USB Connection

The diagram illustrates three steps for connecting the printer to the computer:

1. Connect the USB cable to the computer.
2. Connect the USB cable to the printer.
3. Turn on the printer.

Follow the steps below to install the printer driver:

Status:

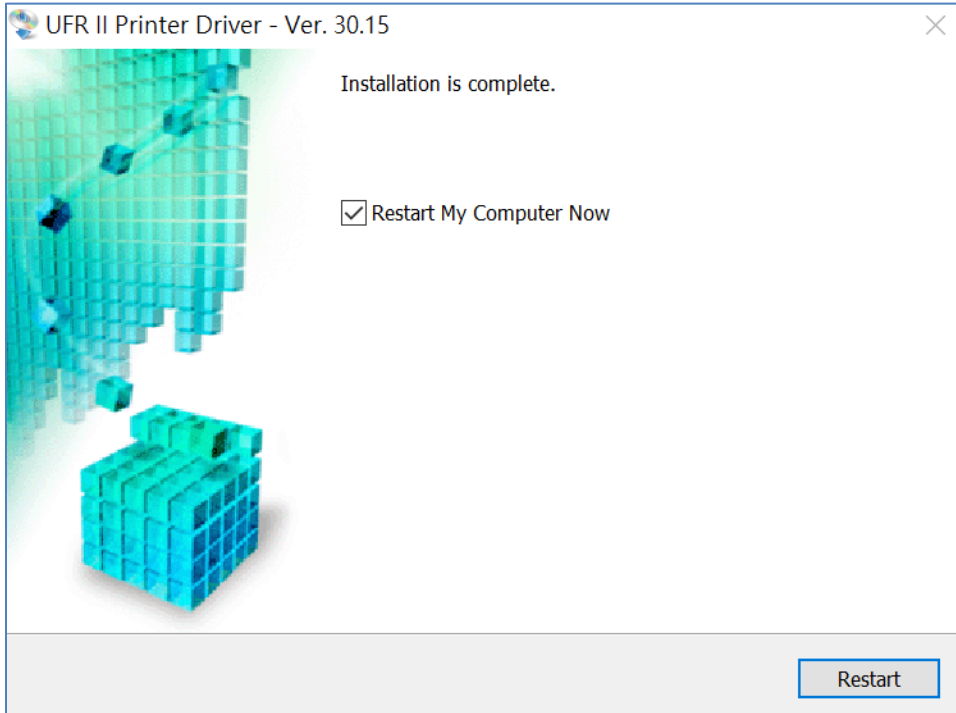
1. Connect the USB cable to the computer.
2. Connect the USB cable to the printer.
3. If the printer power is off, turn on the printer. The printer will be recognized automatically and installation of printer drivers will start.

If the printer is not automatically recognized even with the USB cable connected, disconnect the cable from the printer after turning off the printer, and then connect the cable again.

Skip

8. 建議別選「Restart My Computer Now」，按「Restart」重新開機

We recommend to click “Restart My Computer Now”, click “Restart” to reboot computer



-完-  
-End-