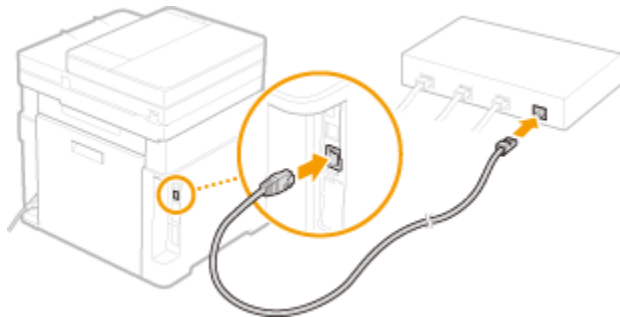


MF633Cdw 在 Windows 透過 LAN 連線連接印表機之驅動程式步驟
Driver installation procedure for MF633Cdw in Windows (Via Wired LAN)

先將打印機連接到網路，詳細可參考以下步驟

Connect printer to network first, please refer to following procedure

1. 開啟印表機
Turn on the printer
2. 在主畫面中點選「功能表」
Tap “Menu” in the Home Screen
3. 點選「參數選擇」，再點選「網路」
Tap “Preferences”, then tap “Network Settings”
4. 點選「有線 / 無線區域網路」
Tap “Select Wired / Wireless LAN”
5. 點選 <有線區域網路>
Tap “Wired LAN”
6. 使用區域網路纜線將本機連接到路由器
推入接頭，直至聽到喀嗒聲
Connect the machine to router by using a LAN cable, push the connector in until it clicks into place



等待約 2 分鐘，直到本機的 IP 位址設定完成

Wait approximately 2 minutes until IP address settings of the machine complete

下載及安裝步驟

Driver download and installation procedure

7. 到佳能網站 <https://hk.canon/en/support/imageCLASS%20MF633Cdw/model>，下載印表機的驅動程式

Go to: <https://hk.canon/en/support/imageCLASS%20MF633Cdw/model>, download the printer driver

8. 選擇並下載以下檔案

Choose and download below files:

- 打印機驅動程式 / Printer Driver

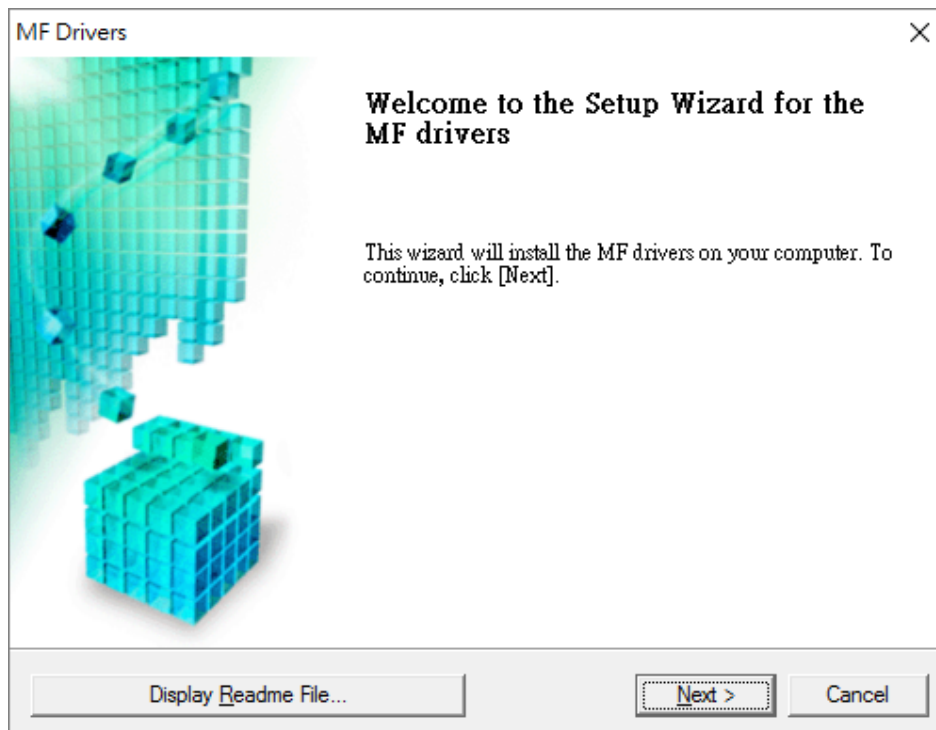
[\[Windows xxbit\] MF635Cx/MF633Cdw MFDivers \(Generic Plus UFR II / Generic Plus PCL6 / Generic Plus PS3 / Generic FAX / ScanGear\)](#)

- 掃描器軟件 / Scanning software

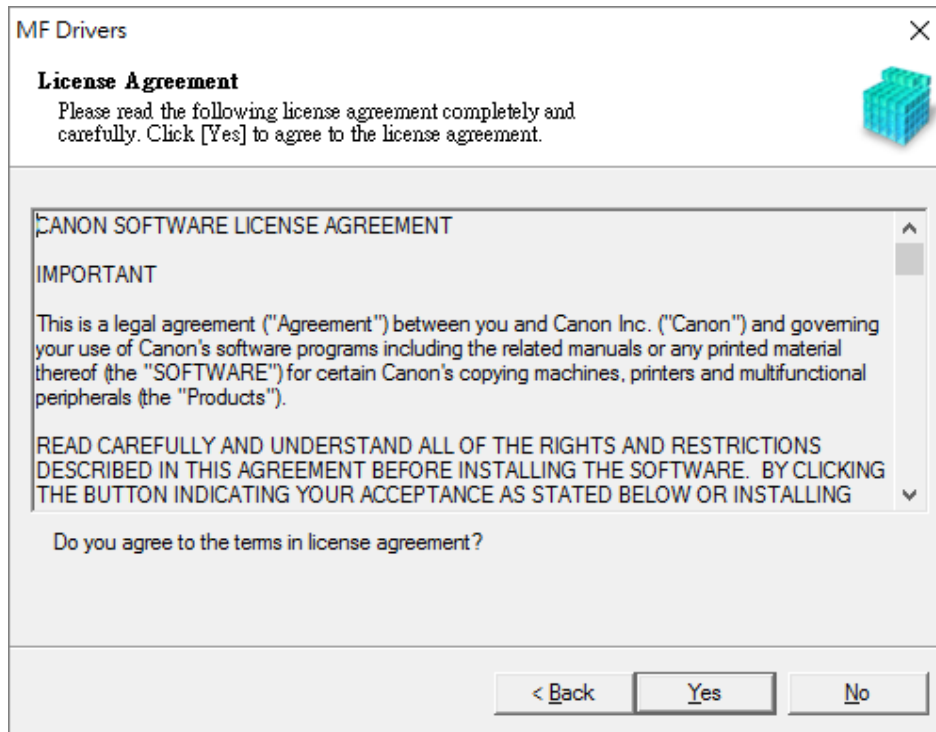
[\[Windows 32bit & 64bit\] MF Scan Utility Ver.x.x.x.x](#)

9. 執行檔案〔MF633CMFDriverXXXXXX.exe〕按「Next」

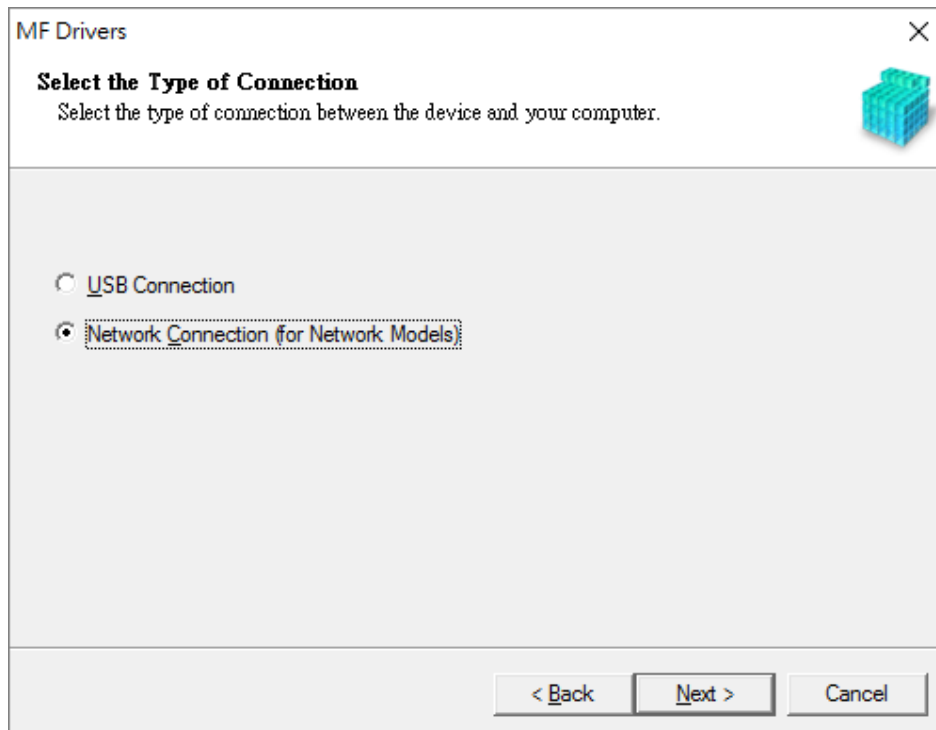
Run File [MF633CMFDriverXXXXXX.exe], click "Next"



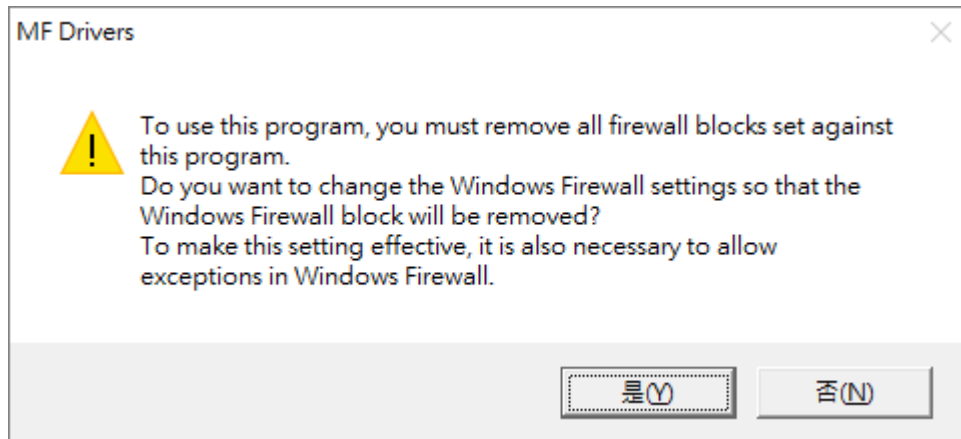
10. 按「Yes」
Click “Yes”



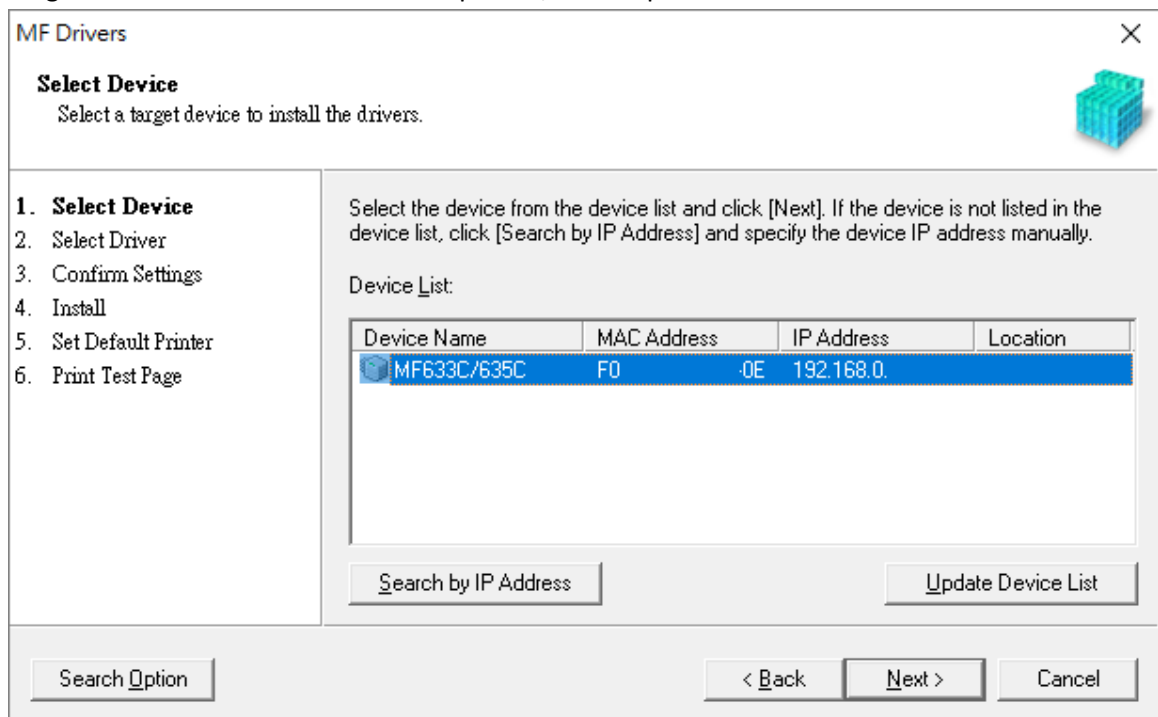
11. 選擇「Network connection (for Network Models)」，按「Next」
Choose “Network connection (for Network Models)”, click “Next”



12. 按「是」
Click "Yes"



13. 程式會自動偵測網絡上的印表機，選擇後按「Next」
Program will auto detect the network printer, choose printer and click "Next"



14. 按「Next」
Click “Next”

MF Drivers [Close]

Select Driver
Select the drivers to install.

1. Select Device
2. Select Driver
3. Confirm Settings
4. Install
5. Set Default Printer
6. Print Test Page

Target Device
MF633C/635C

Driver to Install:

Printer
 Fax (for Supported Models)
 Scanner

Canon Driver Information Assist Service
When you install this service and use shared or local printers, functions that allow you to obtain device information will be added to your computer.

< Back Next > Cancel

15. 按「Next」
Click “Next”

MF Drivers [Close]

Select Driver
Select the drivers to install.

1. Select Device
2. Select Driver
3. Confirm Settings
4. Install
5. Set Default Printer
6. Print Test Page

Target Device
MF633C/635C

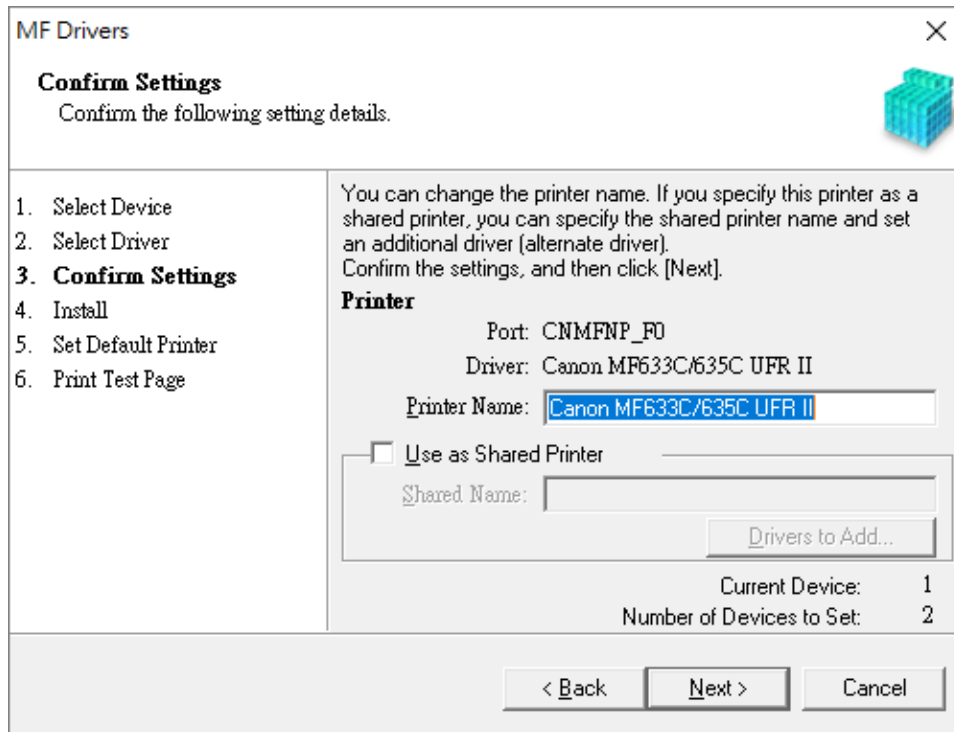
Printer Drivers to Install:

UFR II Printer Driver
 Generic Plus PCL6 Printer Driver
 PS3 Printer Driver
 UFR II V4 Printer Driver

< Back Next > Cancel

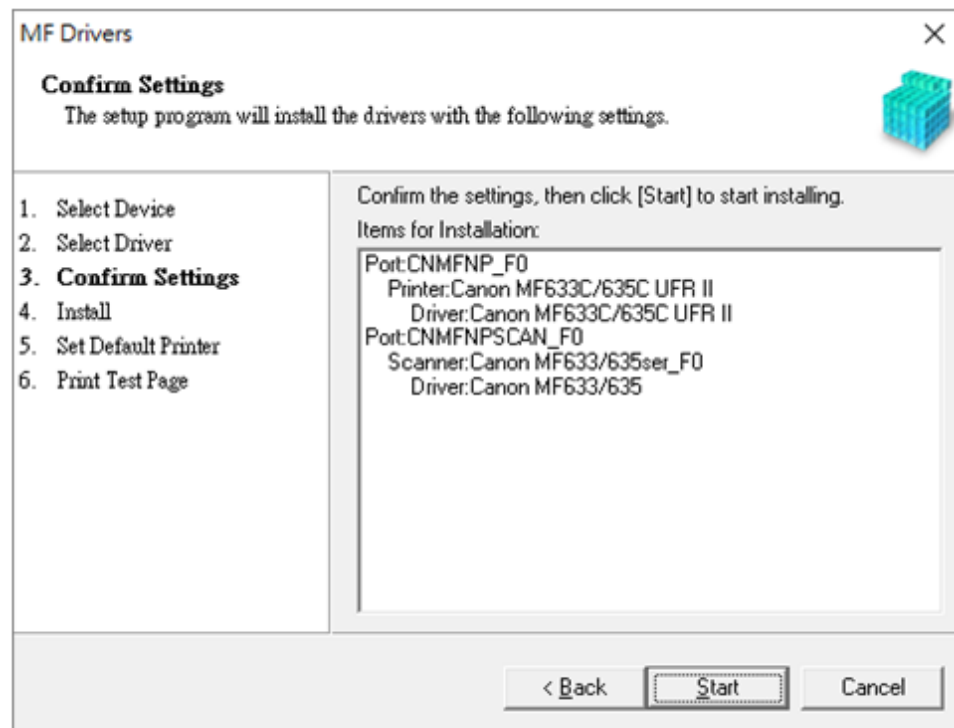
16. 按「Next」

Click "Next"



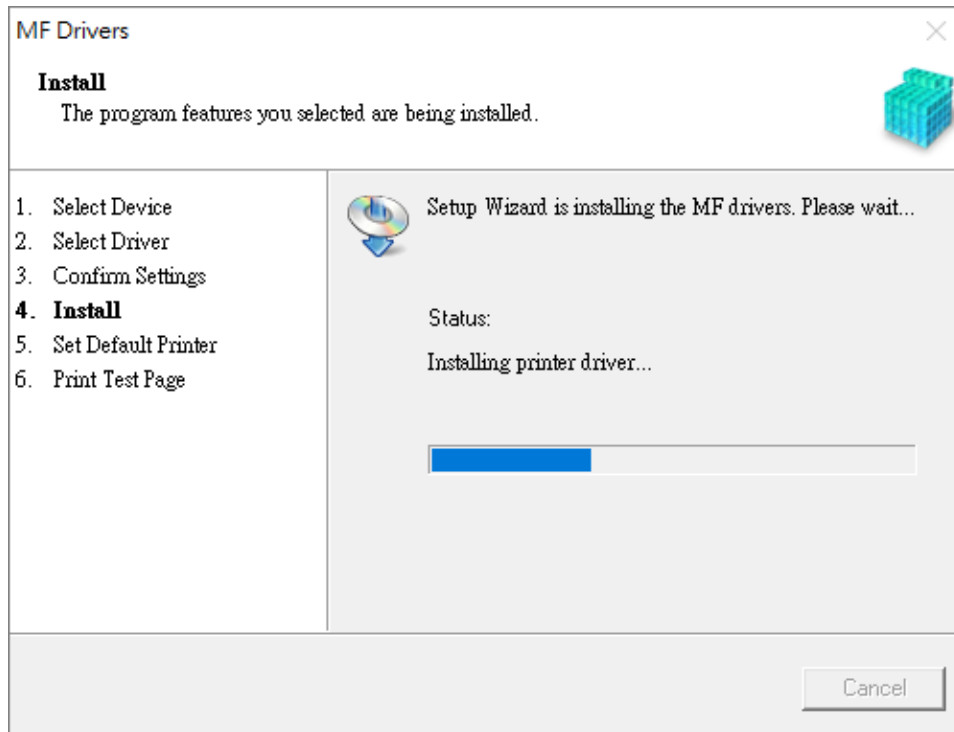
17. 按「Next」

Click "Next"



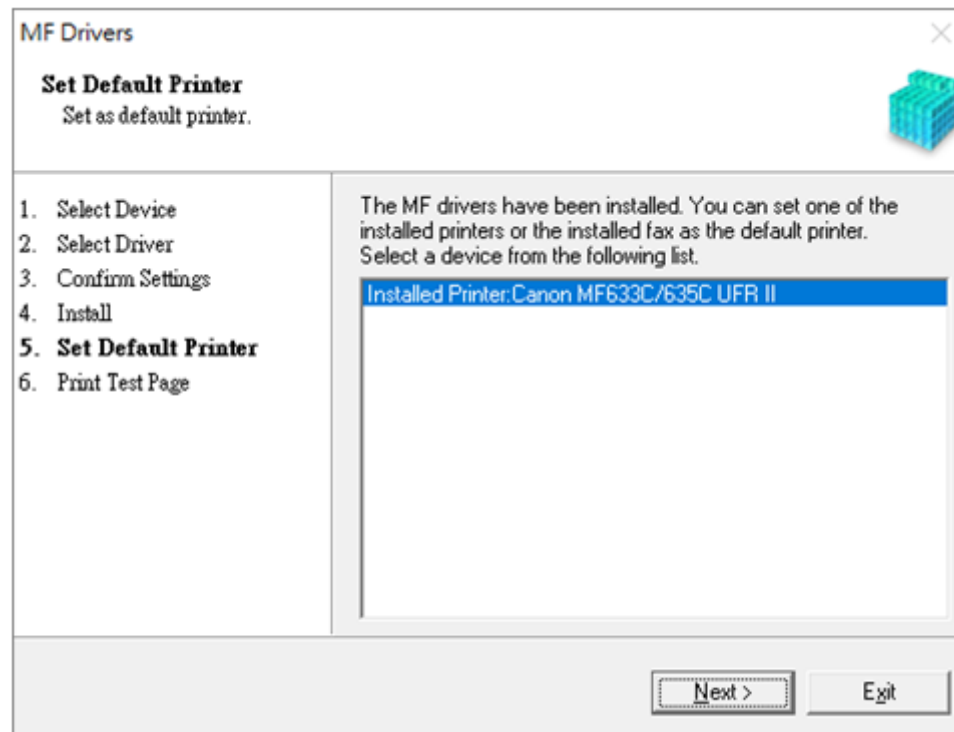
18. 等待安裝程序完成

Waiting for the installation progress

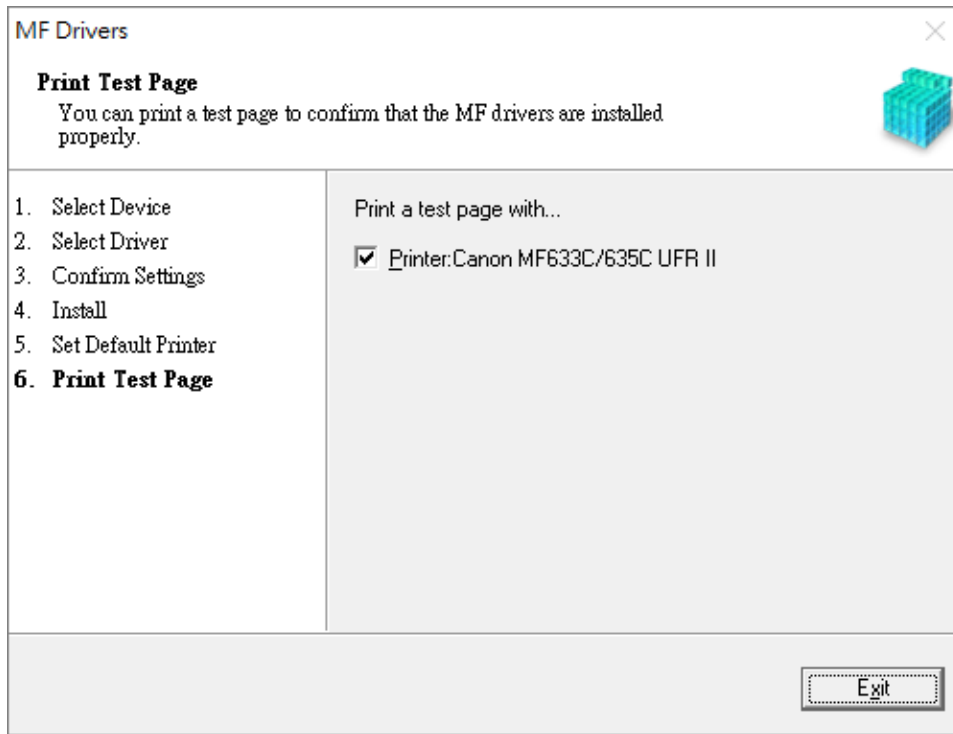


19. 建議選擇 Canon MF633C/635C UFR II，按「Next」

Suggest choose Canon MF633C/635C UFR II, click "Next"



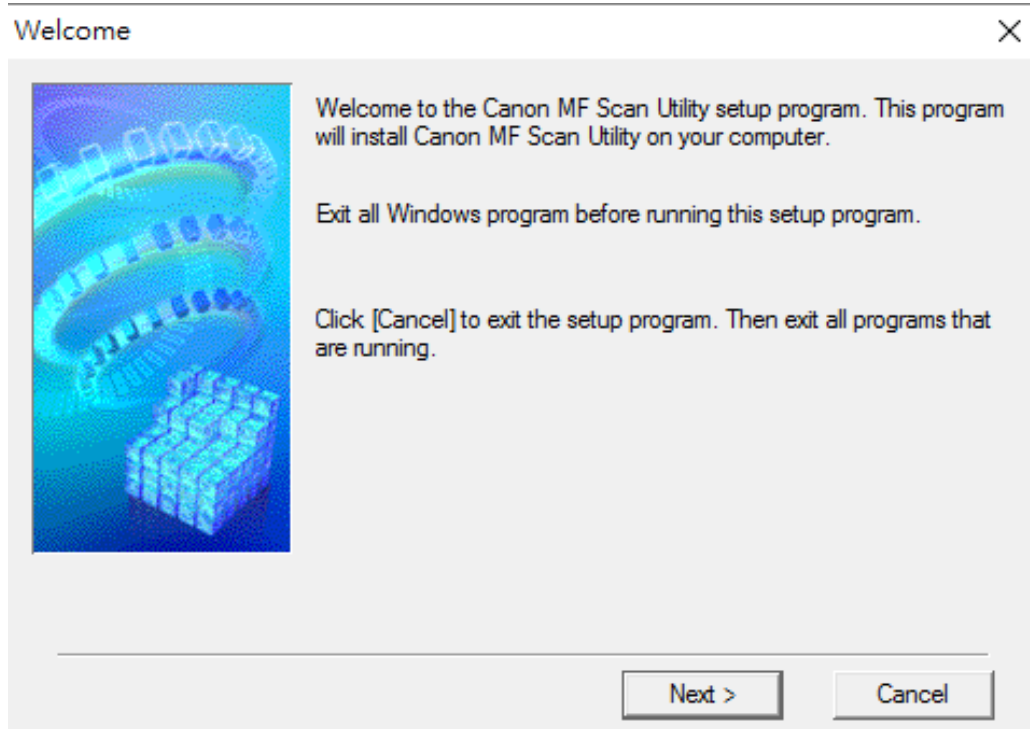
20. 按「Exit」
Click “Exit”



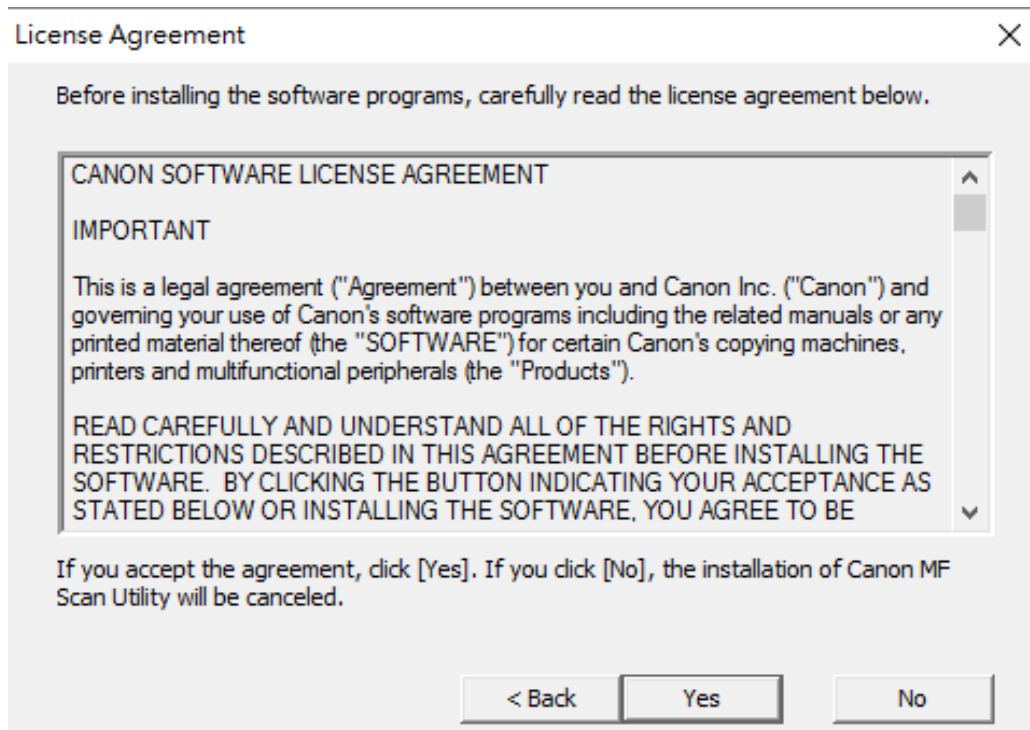
21. 按「是」重啟電腦
Click “Yes” to restart computer



22. 執行檔案〔MFScanUtility_XXXXX_EN.exe〕按「Next」
Run the file [MFScanUtility_XXXXX_EN.exe], click "Next"



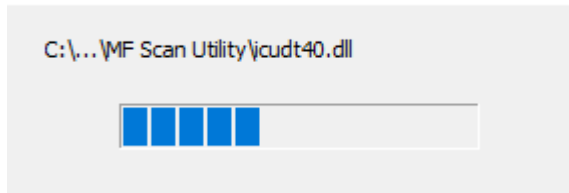
23. 按「Yes」
Click "Yes"



24. 等待安裝程序完成

Waiting for the installation progress

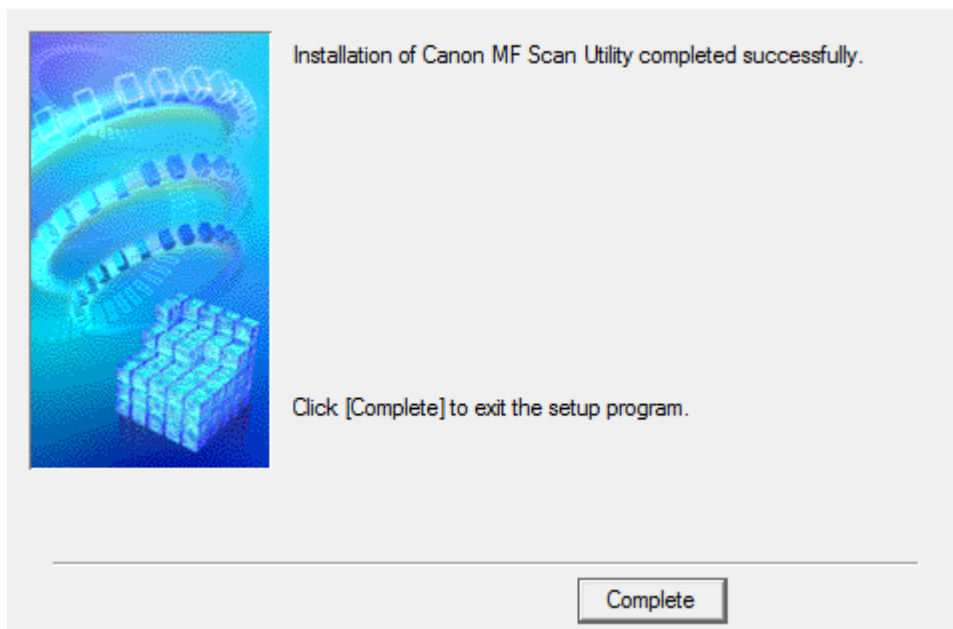
Install



25. 按「Complete」完成安裝

Click "Complete" to finish installation

Installation Complete



-完-
-End-