

MF633Cdw在Windows透過USB連線連接印表機之驅動程式步驟
Driver installation procedure for MF633Cdw in Windows (Via USB)

****注意: 安裝驅動程式前請勿接駁USB線，以免系統發生錯誤****

**** Please don't plug the USB cable until the driver asked to do so****

下載及安裝步驟

Driver download and Installation procedure

1. 到佳能網站<http://support-hk.canon-asia.com/>，選擇相關的印表機型號及下載印表機的驅動程式

Go to: <http://support-hk.canon-asia.com/> , select related printer model, then download the printer driver

SUPPORT & DOWNLOAD

Select your product from the menus below:

1. Choose a product category

Laser Printers

2. Choose a product series

ImageCLASS

3. Choose a product model

imageCLASS MF635Cx

4. Choose type of document

Drivers & Softwares

2. 選擇並下載以下檔案

Choose and download below files:

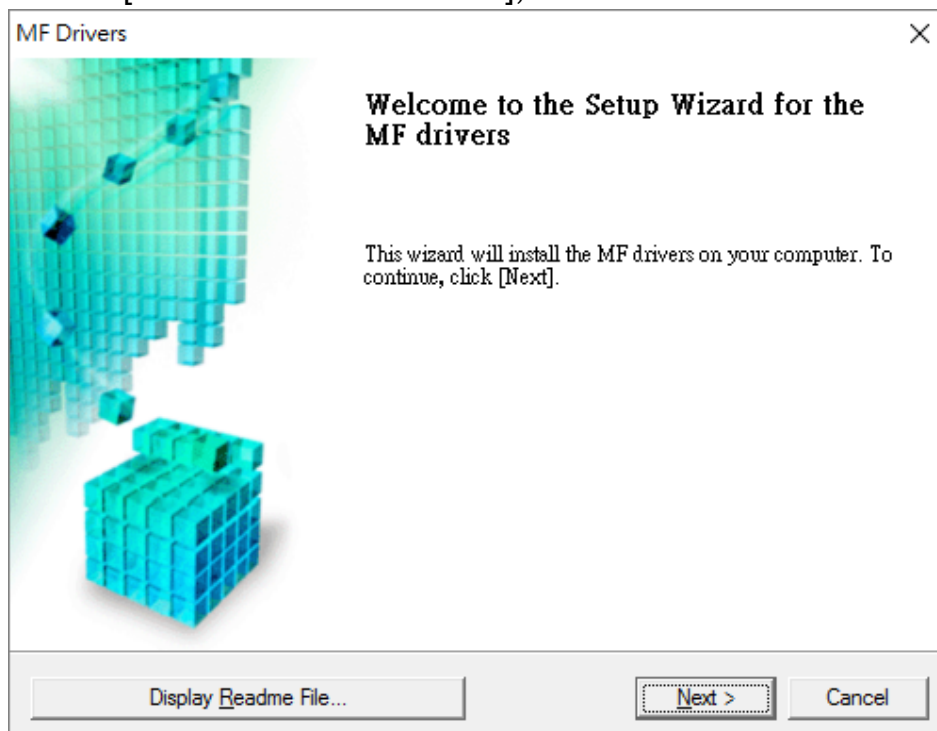
- 打印機驅動程式 [MF633CMFDriverXXXXXXXX.exe]

Printer Driver [MF633CMFDriverXXXXXXXX.exe]

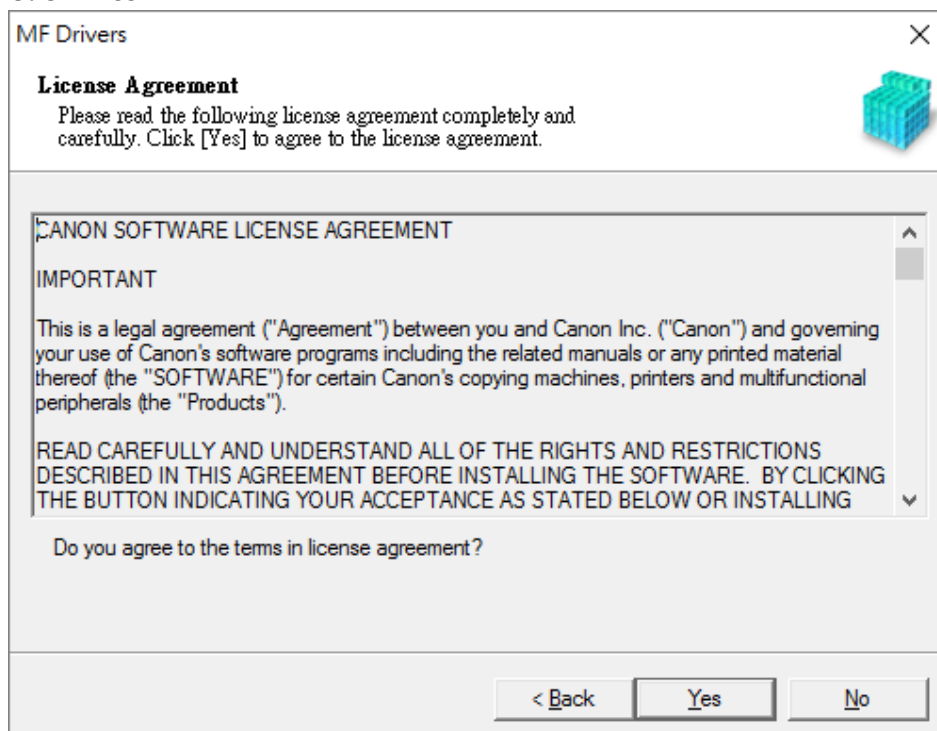
- 掃描器驅動程式 [MFScanUtility_XXXXX_EN.exe]

Scanner Driver [MFScanUtility_XXXXX_EN.exe]

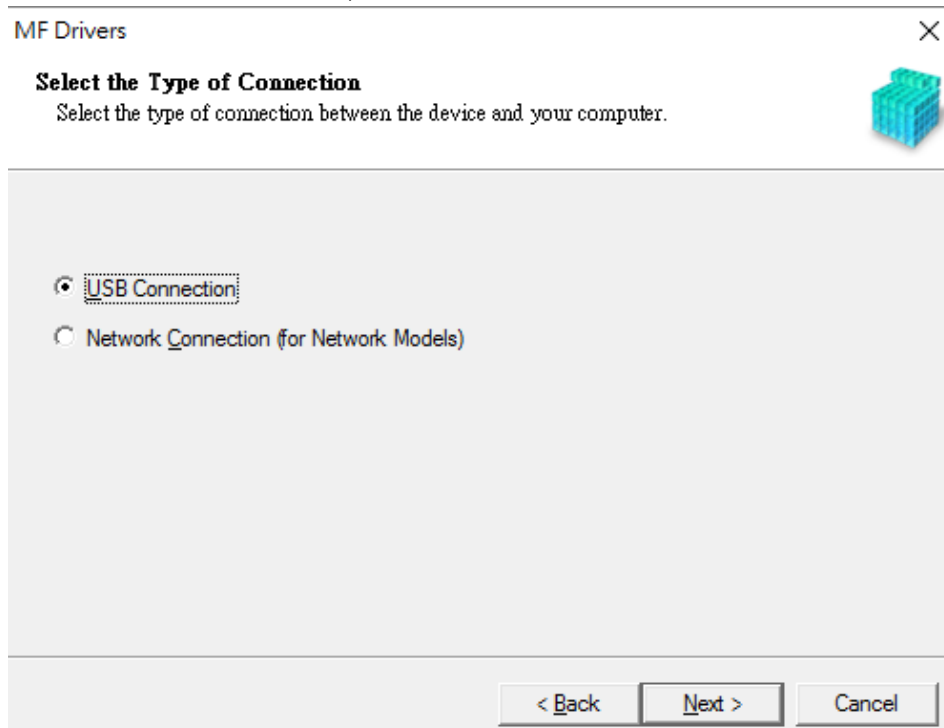
3. 執行檔案〔MF633CMFDriverXXXXXX.exe〕按「Next」
Run File [MF633CMFDriverXXXXXX.exe], click “Next”



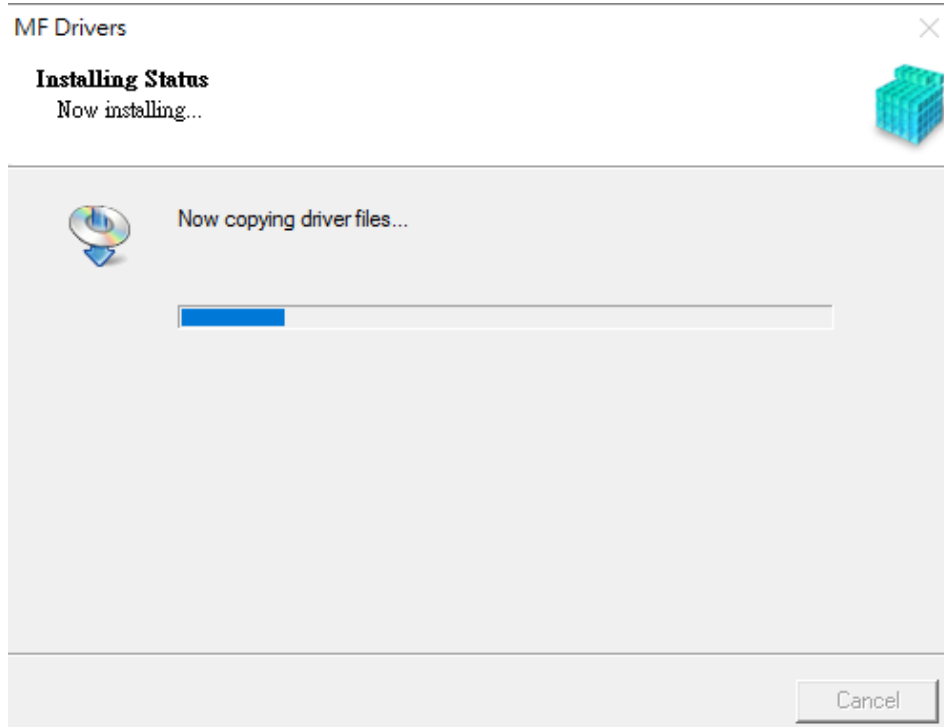
4. 按「Yes」
Click “Yes”



5. 選擇「USB Connection」，按「Next」
Choose “USB Connection”, click “Next”



6. 等待安裝程序完成
Waiting for the installation progress



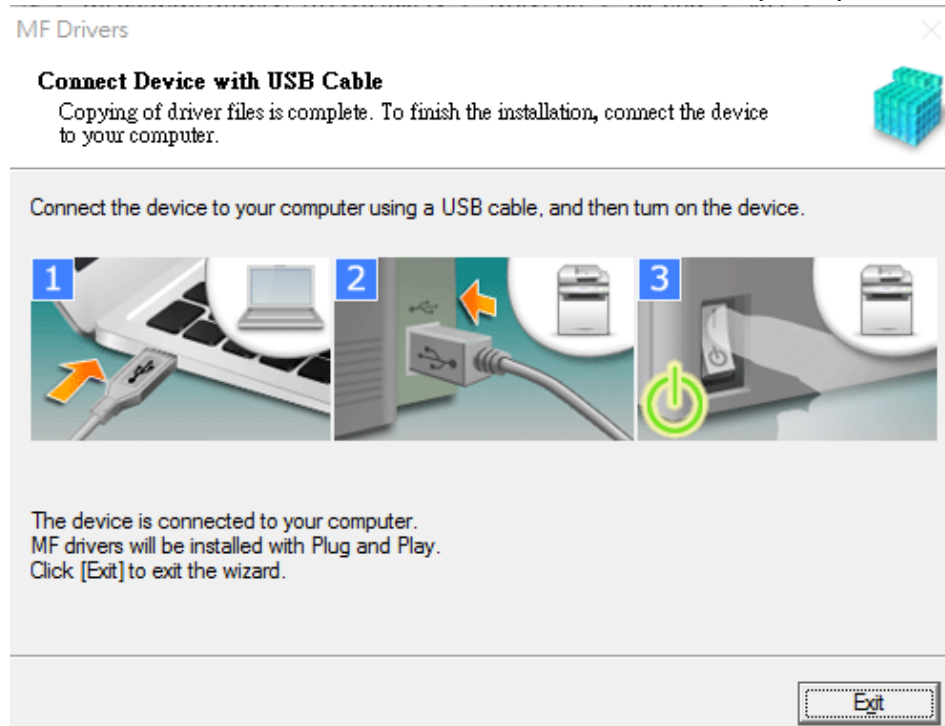
7. 接駁USB線及開啟印表機

Connect device with USB cable and switch on the printer

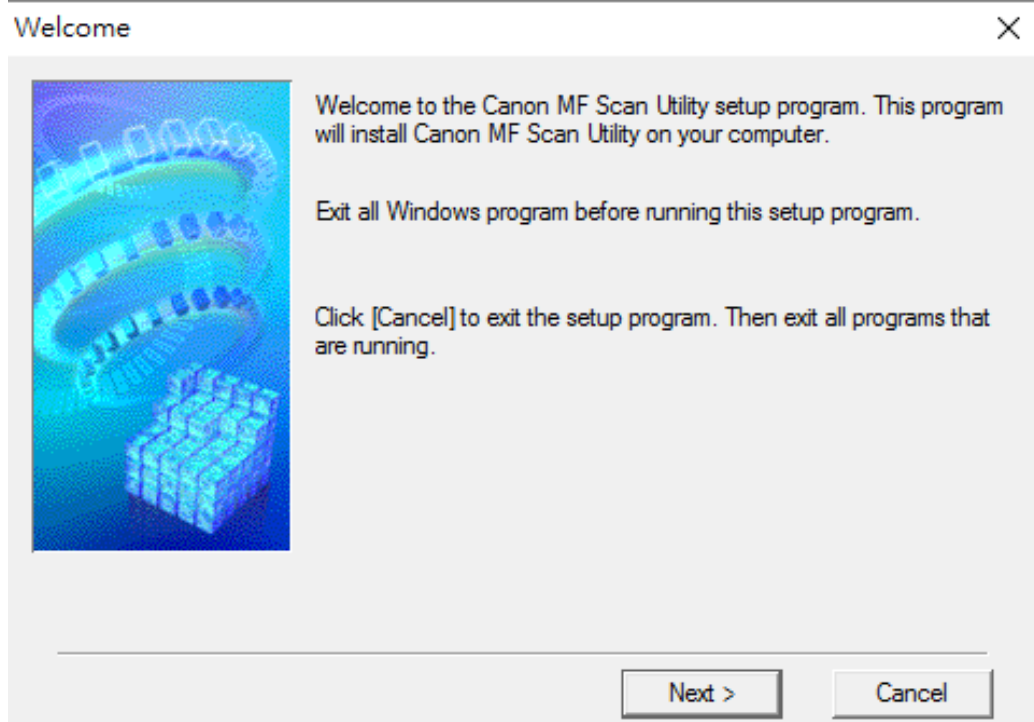


8. 成功偵測印表機後按「Exit」完成安裝

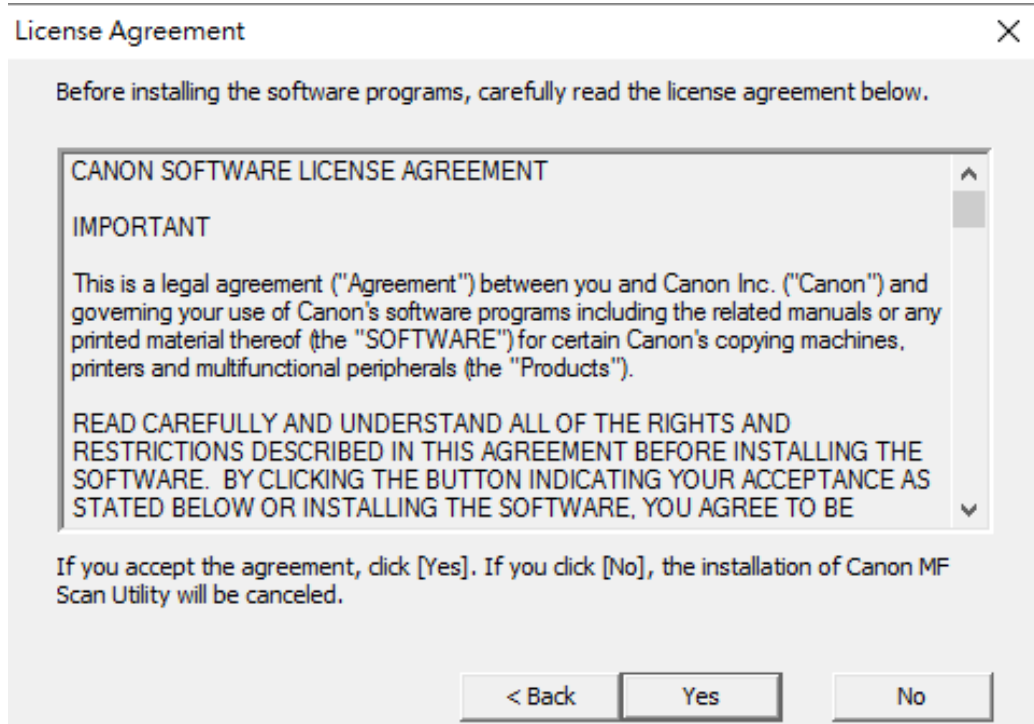
Click "Exit" to finish installation after device detected by computer.



9. 執行檔案〔MFScanUtility_XXXXX_EN.exe〕按「Next」
Run the file [MFScanUtility_XXXXX_EN.exe] , click “Next”

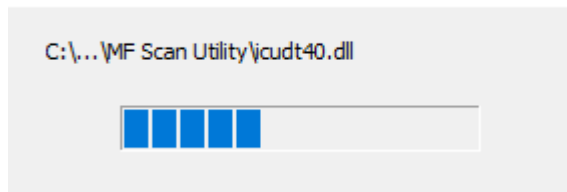


10. 按「Yes」
Click “Yes”



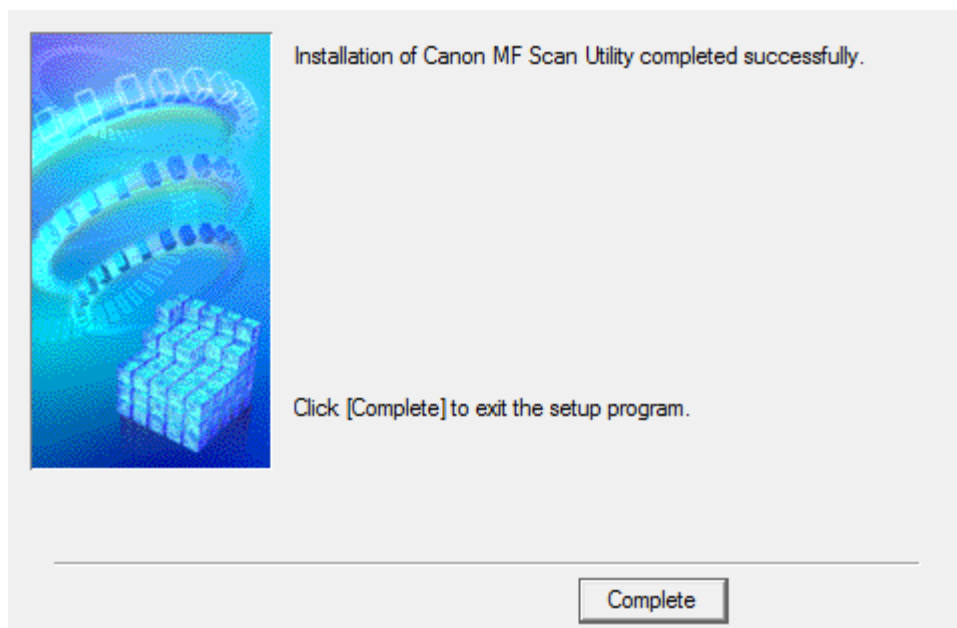
11. 等待安裝程序完成
Waiting for the installation progress
-

Install



12. 按「Complete」完成安裝
Click “Complete” to finish installation
-

Installation Complete



-完-
-End-