

MF515x 在 Windows 透過 WIFI 連線連接印表機之驅動程式步驟
Driver installation procedure for MF515x in Windows (Via WIFI)

先將打印機連接到路由器，詳細可參考以下步驟：

The Connection by selecting a wireless router:

1. 在主畫面中點選「功能表」
Tap “Menu” in the Home Screen
2. 點選「網路設定」
Tap “Network Settings”
 - 若顯示 PIN 碼輸入畫面，請使用數字鍵輸入 PIN 碼，然後點選「套用」
 - If a screen for entering a PIN is displayed, enter the PIN with the numeric keys and tap “Apply”
3. 點選「無線區域網路」
Tap “Select Wired/Wireless LAN” and tap Wireless LAN
 - 若顯示「是否啟用無線區域網路? >」訊息，點選「是」
 - If display “DO you Want to use the wireless LAN to connect the computer?”, Tap “Yes”

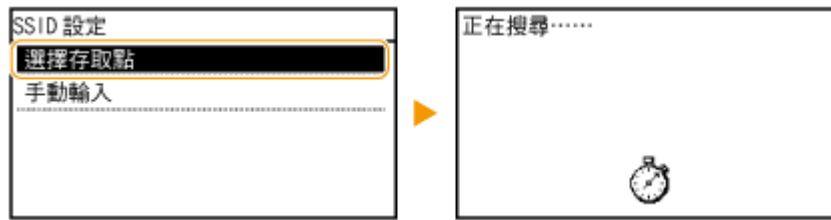


4. 點選「SSID 設定」
Tap “SSID setting”



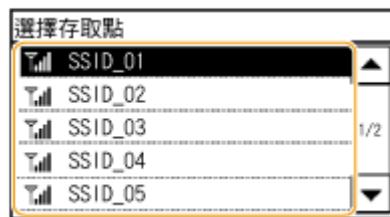
5. 點選「選擇存取點」

Tap "Select Access Point"



6. 選擇無線區域網路路由器

Select the router SSID

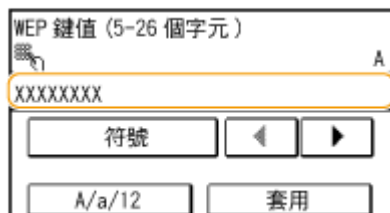


7. 輸入您記下的網路鍵值

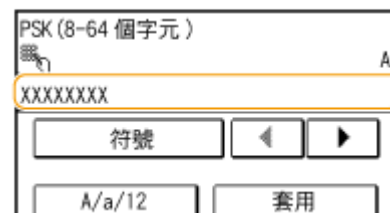
使用數字鍵輸入網路金鑰(路由器密碼)，然後點選「套用」

Enter the network key using the numeric keys, and tap "Apply"

WEP



WPA-PSK 或 WPA2-PSK



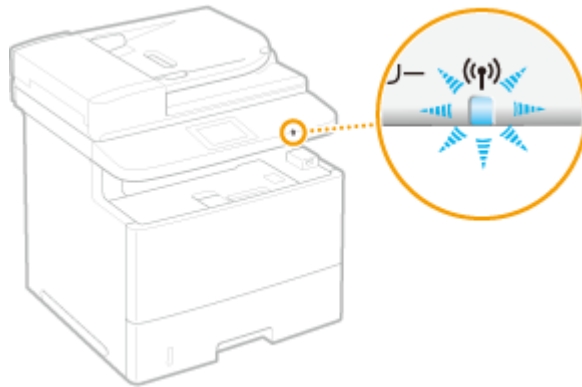
8. 點選「是」

Tap "yes" for "Do you want to connect for the new setting?"



9. 確認控制面板上的 Wi-Fi 指示燈閃爍

The Wi-Fi indicator blinks when a wireless router is detected



10. 設定完成時，會顯示以下畫面，約 2 秒後 Wi-Fi 指示燈隨即亮起

When the setup completed, the screen below will display, and the Wi-Fi indicator will lights up around 2 seconds later,



等待約 2 分鐘，直到本機的 IP 位址設定完成

Wait approximately 2 minutes until the IP address settings of the machine complete

下載及安裝步驟

Driver download and Installation procedure

11. 到佳能網站 <https://hk.canon/en/support/imageCLASS%20MF515x/model>，下載印表機的驅動程式

Go to: <https://hk.canon/en/support/imageCLASS%20MF515x/model>, download the printer driver

12. 選擇並下載以下檔案

Choose and download below files:

- 打印機驅動程式 / Printer Driver

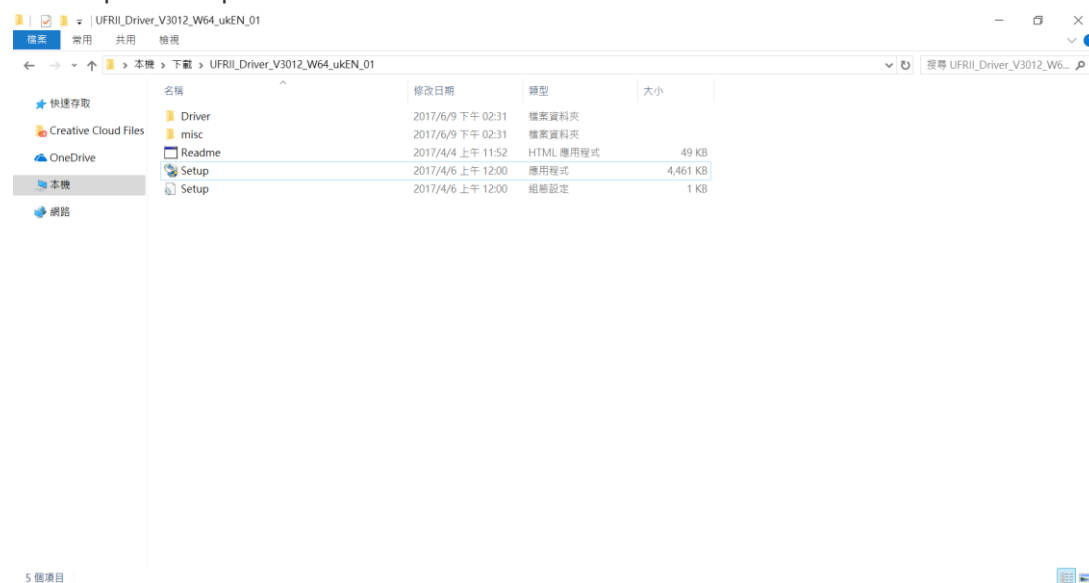
[Windows x64bit] imageCLASS MF515x MFDivers (UFR II / PCL / PS3 / FAX / ScanGear)

- 掃描器軟件 / Scanning software

[Windows 32bit & 64bit] MF Scan Utility Ver.x.x.x.x

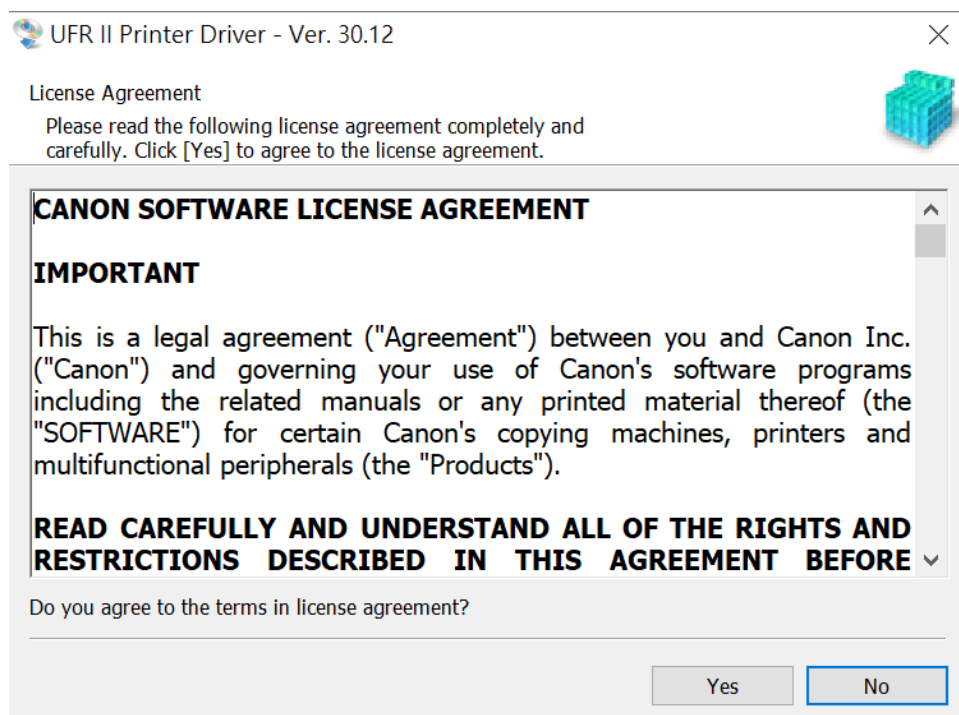
13. 下載的文件以自解壓縮檔檔案(.exe 格式)保存在指定的文件夾中，打開文件解壓縮。將在同一文件夾中創建新文件夾。新文件夾的名稱與解壓縮文件的名稱相同，進入新文件夾開啟「Setup.exe」開始安裝

Open the downloaded file, a same name new folder will be created. Go into new folder open "Setup.exe" start installation"



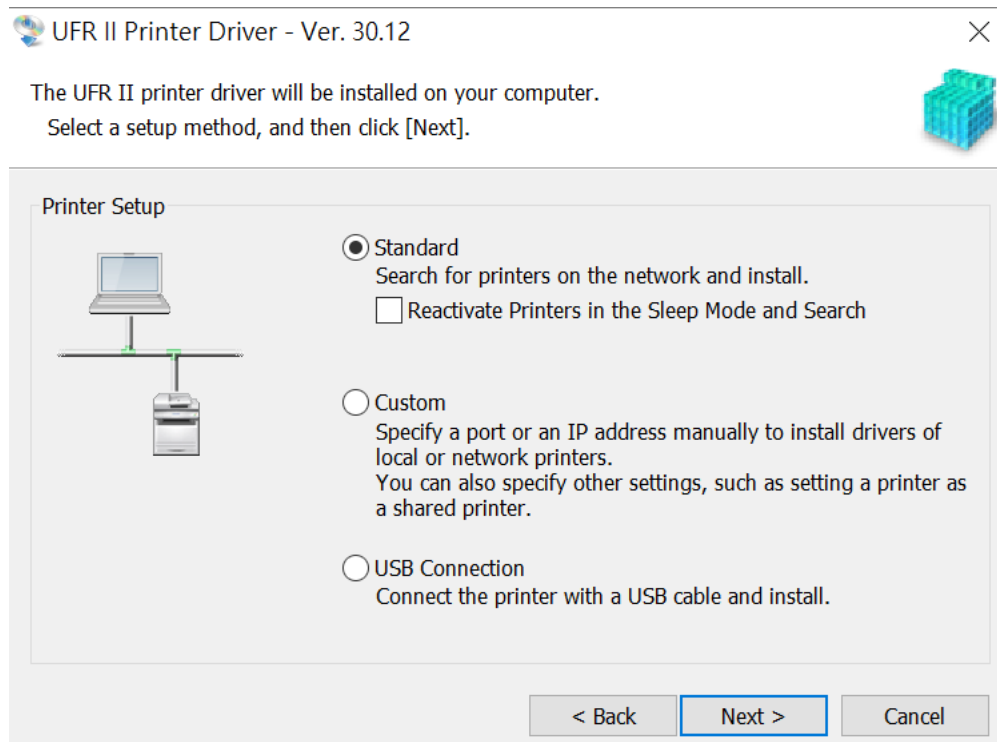
14. 選擇「Yes」

Choose "Yes"

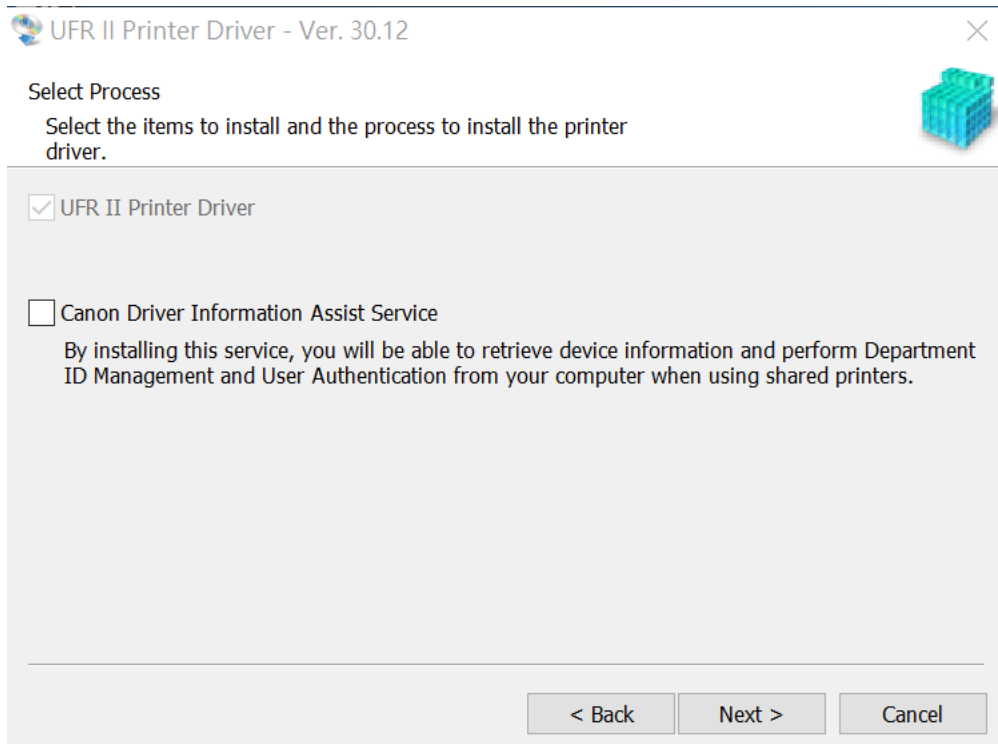


15. 選擇「Standard」，按「Next」

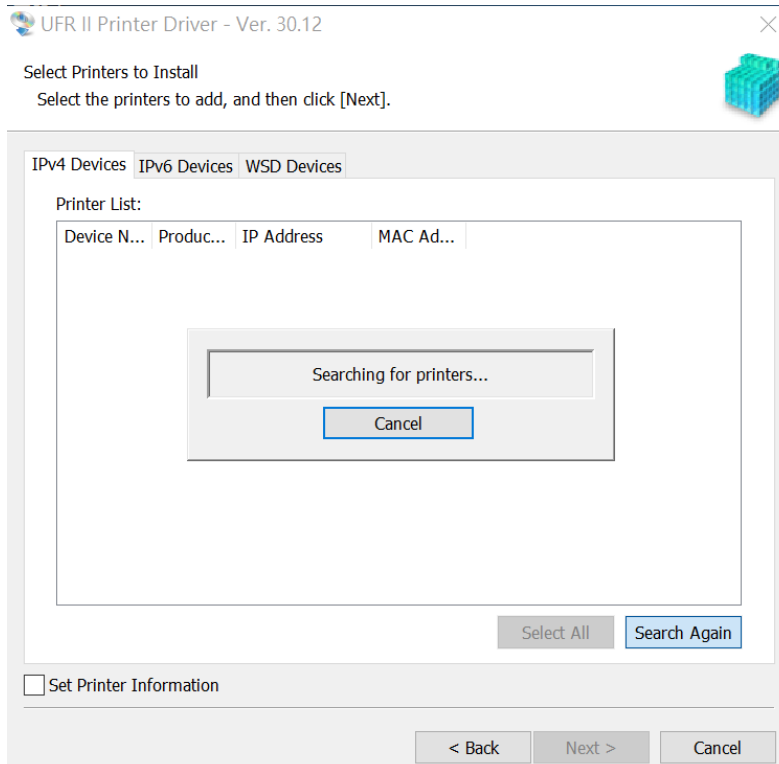
Choose "Standard", press "Next"



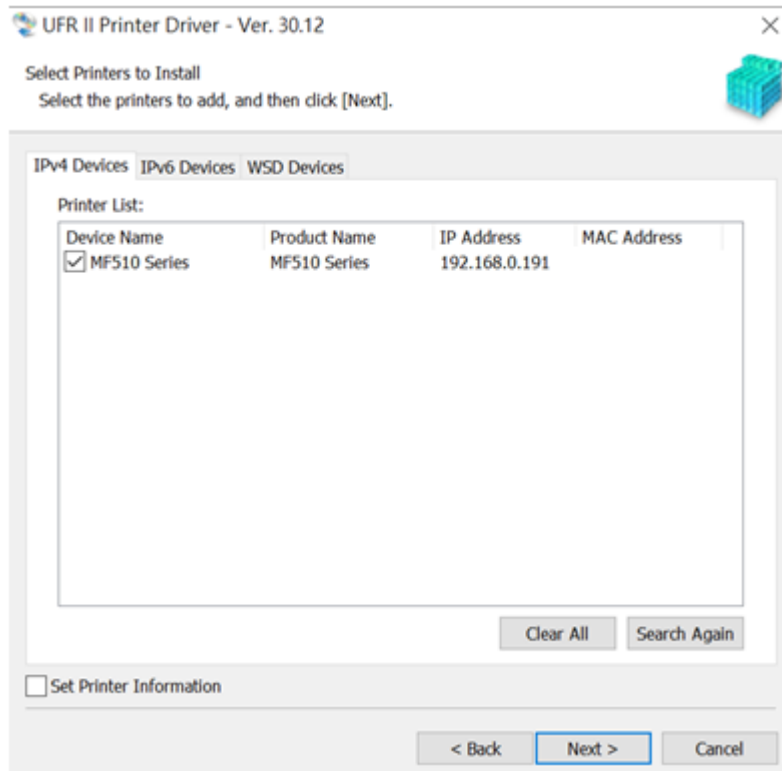
16. 按「Next」
Press “Next”



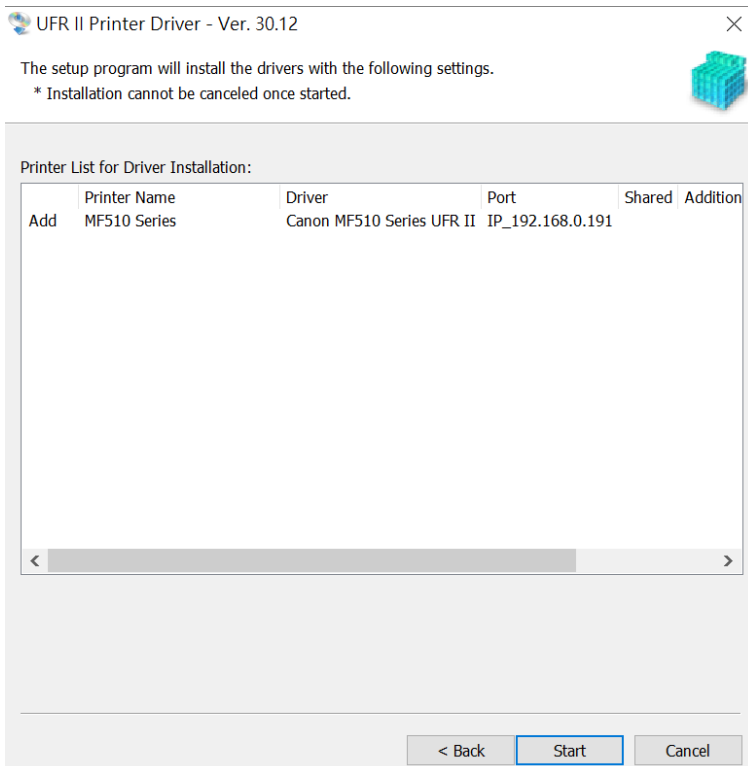
17. 等待搜尋印表機
Wait for searching printer



18. 勾選 MF510 Series，按「Next」
Select MF510 Series, press “Next”

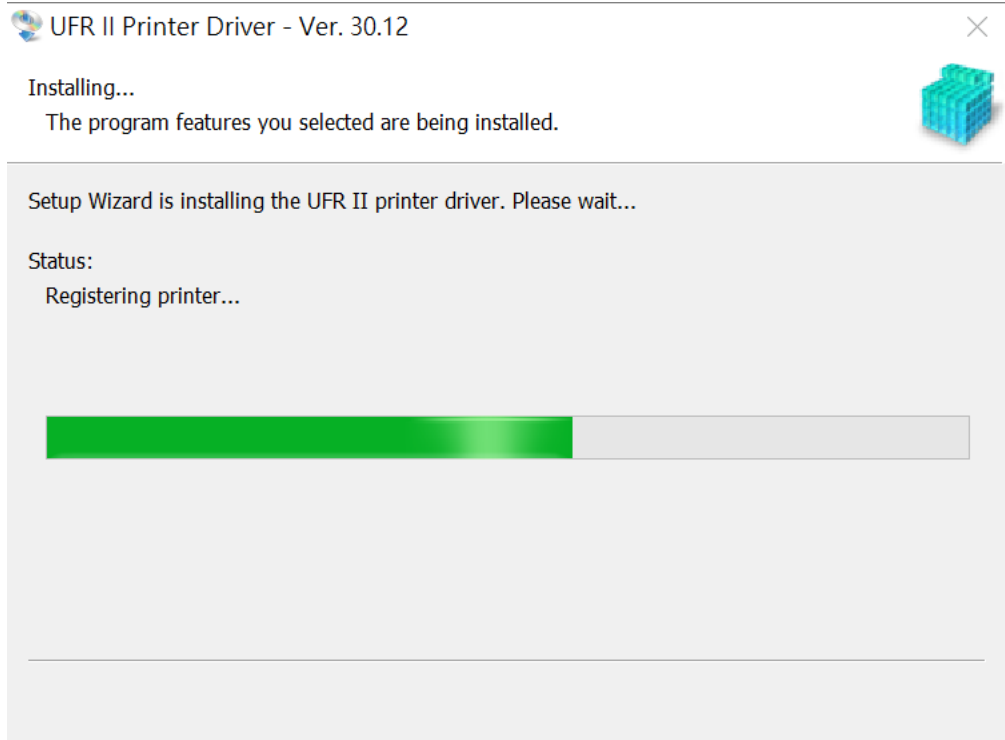


19. 確定印表機資料，按「Start」
Confirm printer information, press “Start”



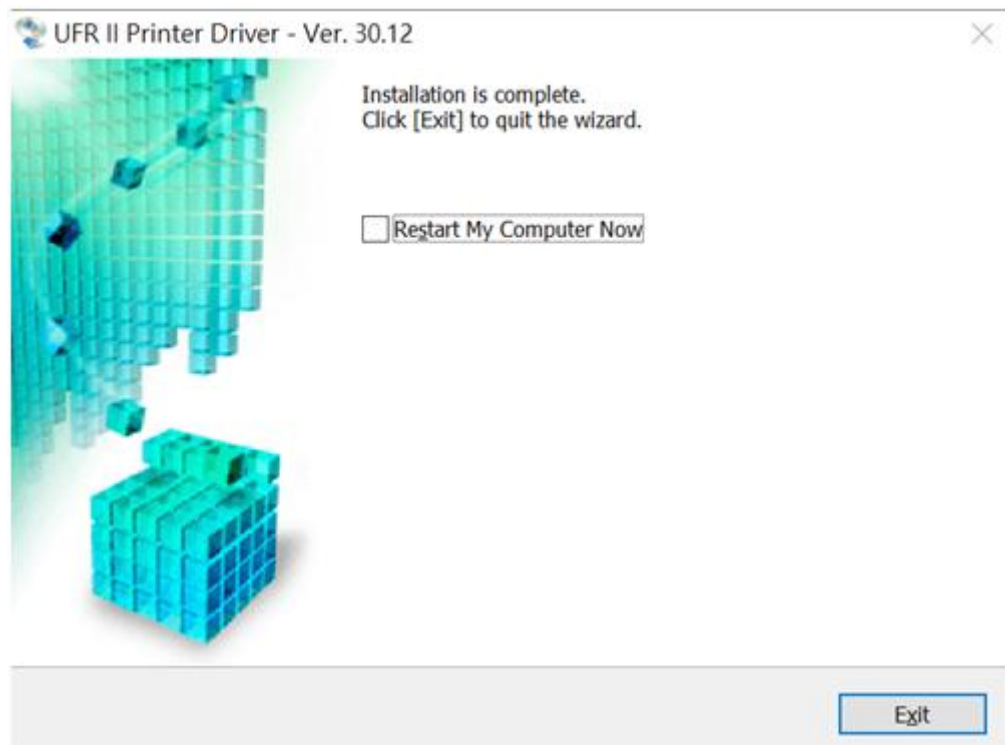
20. 等待安裝程序完成

Waiting for the installation progress

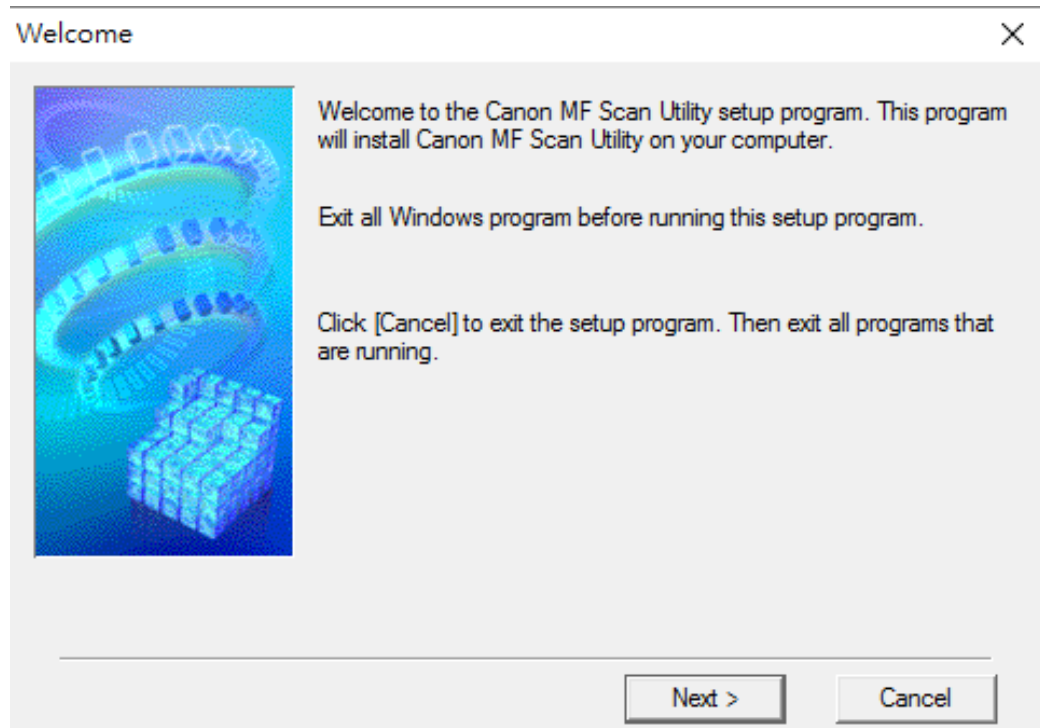


21. 按「Exit」完成安裝

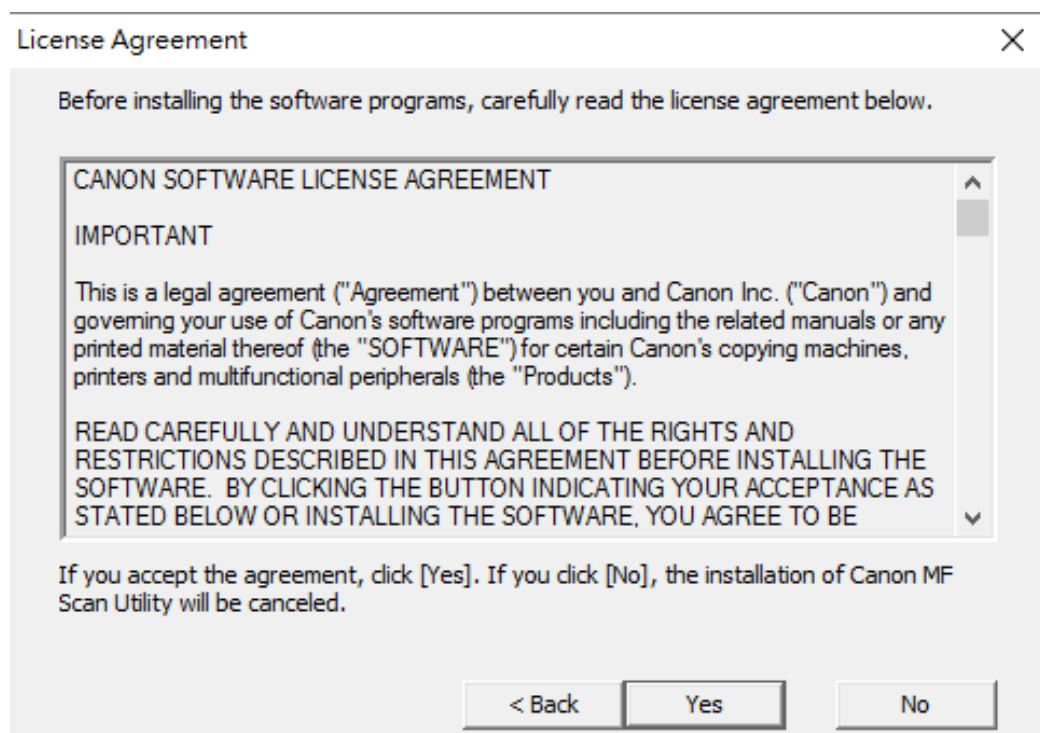
Click "Exit" to finish installation



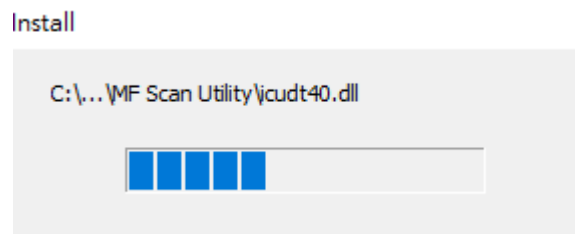
22. 執行檔案〔MFScanUtility_XXXXX_EN.exe〕按「Next」
Run the file [MFScanUtility_XXXXX_EN.exe], click "Next"



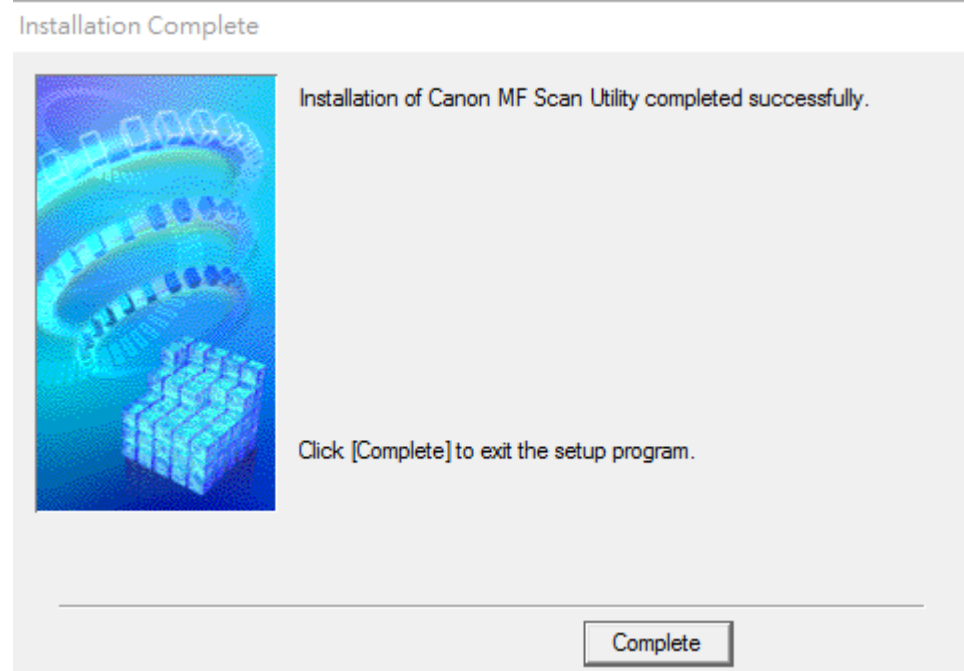
23. 按「Yes」
Click "Yes"



24. 等待安裝程序完成
Waiting for the installation progress



25. 按「Complete」完成安裝
Click "Complete" to finish installation



-完-
-End-