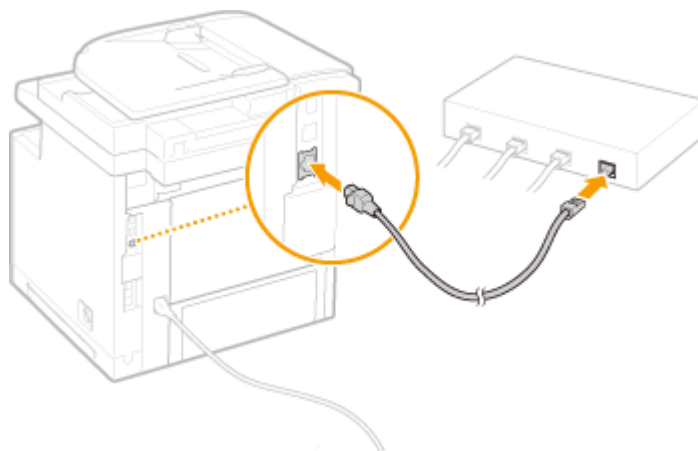


MF515x 在 Windows 透過 LAN 連線連接印表機之驅動程式步驟
Driver installation procedure for MF515x in Windows (Via LAN)

1. 先將打印機連接到網路，詳細可參考以下步驟
(Connect the printer to a Wired LAN)
2. 在主畫面中點選「功能表」
(Tap “Menu” in the Home Screen)
3. 點選「網路設定」
(Tap “Network Settings”)
4. 若顯示 PIN 碼輸入畫面，請使用數字鍵輸入 PIN 碼，然後點選「套用」
(If a screen require for enter PIN is display, enter the PIN with the numeric keys and tap “Apply”)
5. 點選「有線區域網路」
(Tap “Select Wired/Wireless LAN” and tap Wired LAN)



6. 連接區域網路纜線 (Connect a LAN cable)
使用區域網路纜線將本機連接到路由器
推入接頭，直至聽到喀嗒聲
(Connect the machine to a router by using a LAN cable, push the connector in until it clicks into place)



等待約 2 分鐘 (Wait approximately 2 minutes)

等待時，會自動設定 IP 位址 (While you wait, the IP address is set automatically)

下載及安裝步驟

Driver download and Installation procedure

1. 到佳能網站 <https://hk.canon/en/support/imageCLASS%20MF515x/model>，下載印表機的驅動程式

Go to: <https://hk.canon/en/support/imageCLASS%20MF515x/model>, download the printer driver

2. 選擇並下載以下檔案

Choose and download below files:

- 打印機驅動程式 / Printer Driver

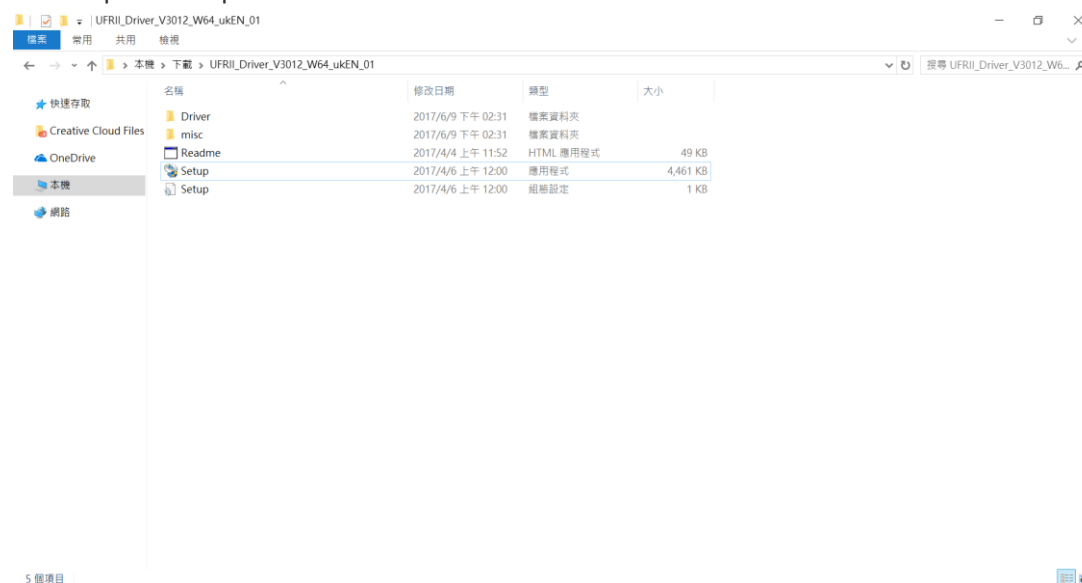
[Windows x64bit] imageCLASS MF515x MFDivers (UFR II / PCL / PS3 / FAX / ScanGear)

- 掃描器軟件 / Scanning software

[Windows 32bit & 64bit] MF Scan Utility Ver.x.x.x.x

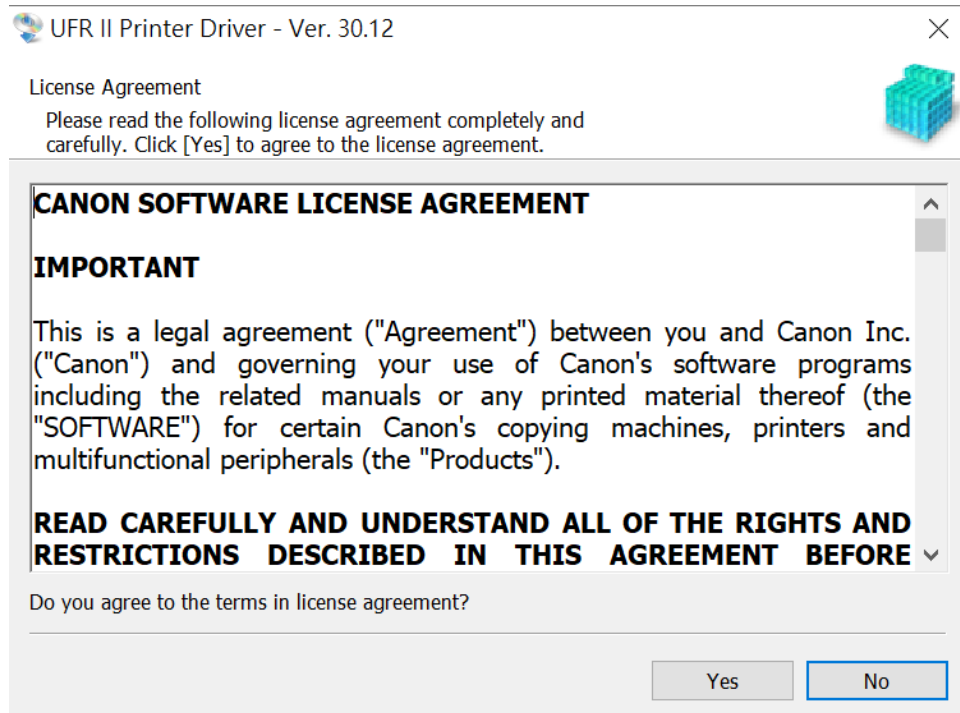
3. 下載的文件以自解壓縮檔檔案(.exe 格式)保存在指定的文件夾中，打開文件解壓縮。將在同一文件夾中創建新文件夾。新文件夾的名稱與解壓縮文件的名稱相同，進入新文件夾開啟「Setup.exe」開始安裝

Open the downloaded file, a same name new folder will be created. Go into new folder open "Setup.exe" start installation"



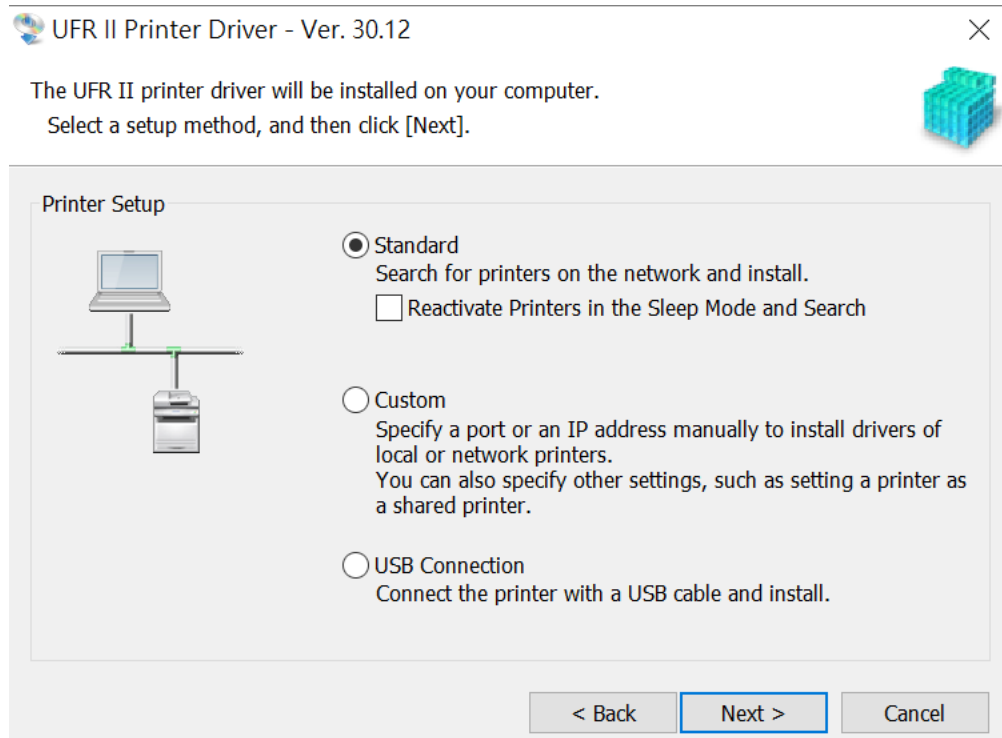
4. 選擇「Yes」

Choose “Yes”

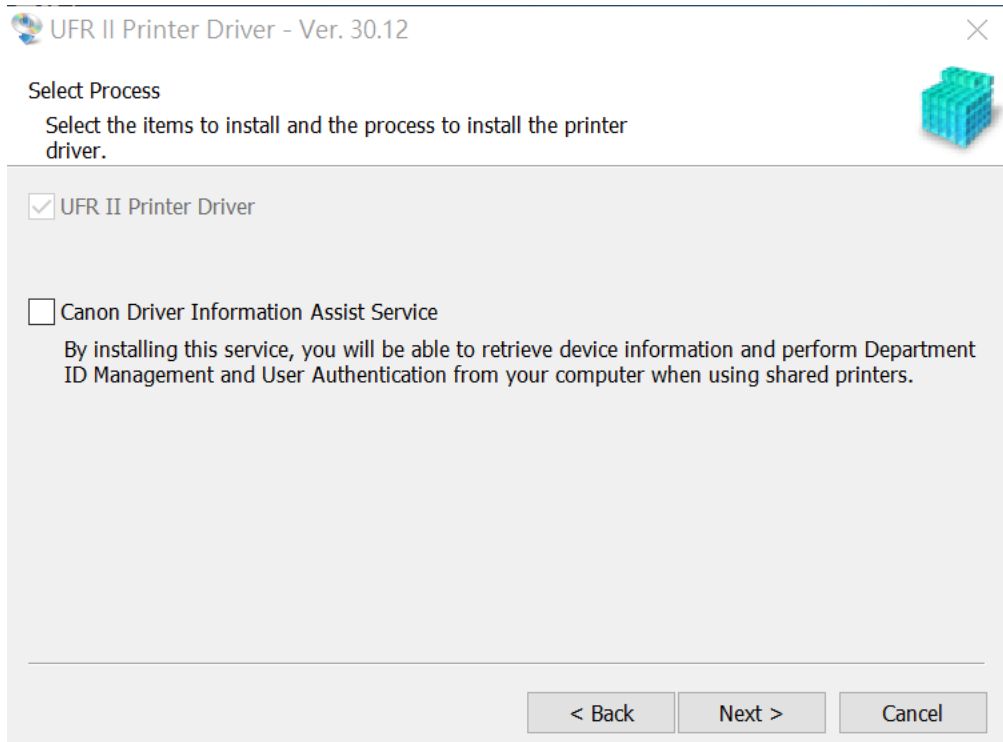


5. 選擇「Standard」，按「Next」

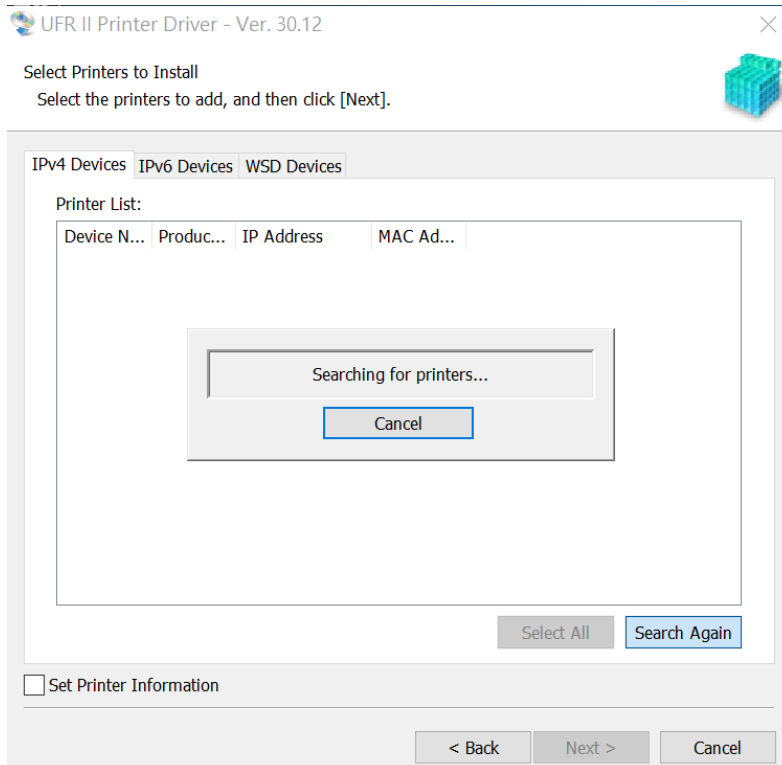
Choose “Standard”, press “Next”



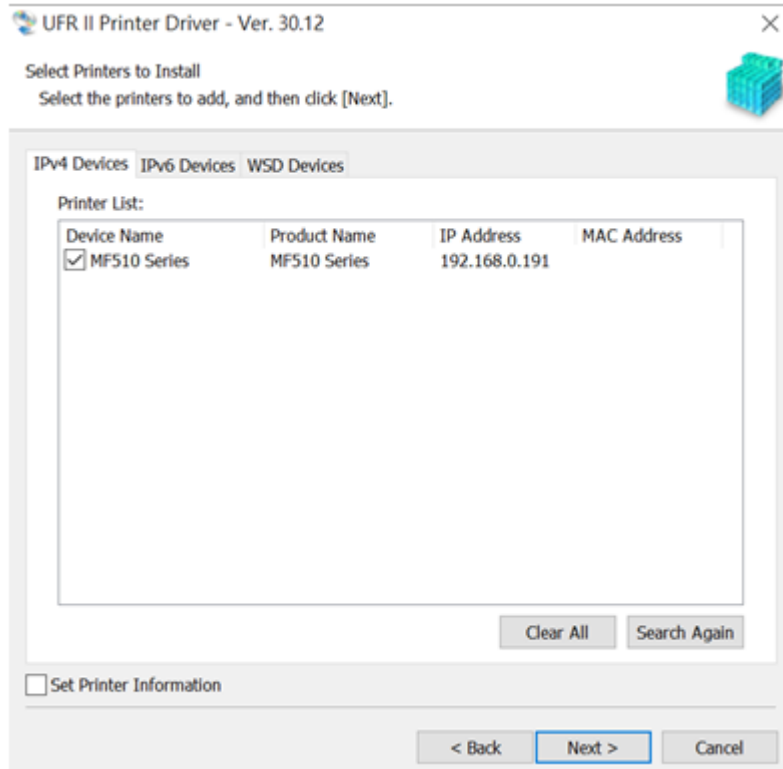
6. 按「Next」
Press “Next”



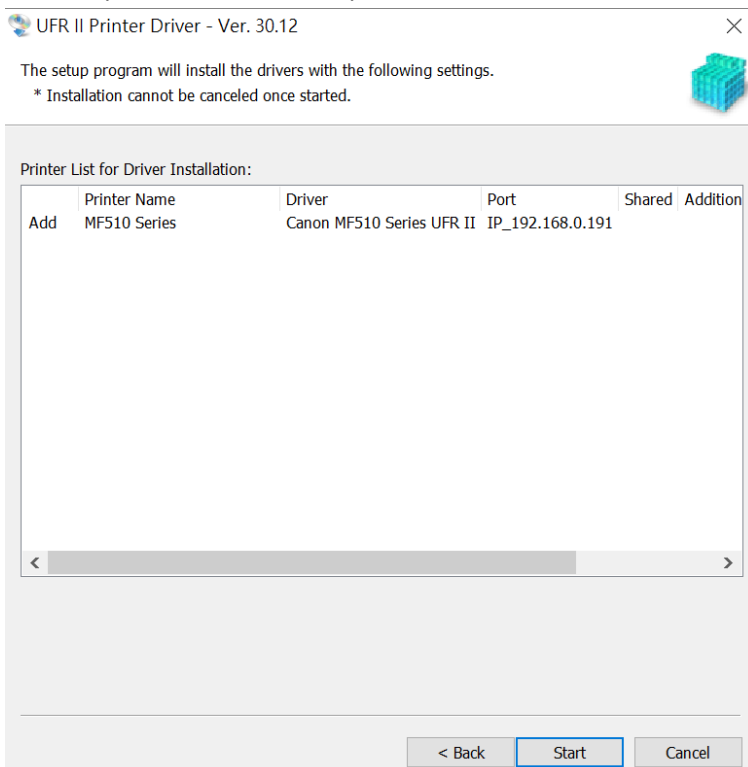
7. 等待搜尋印表機
Wait for searching printer



8. 勾選 MF510 Series，按「Next」
Select MF510 Series, press “Next”

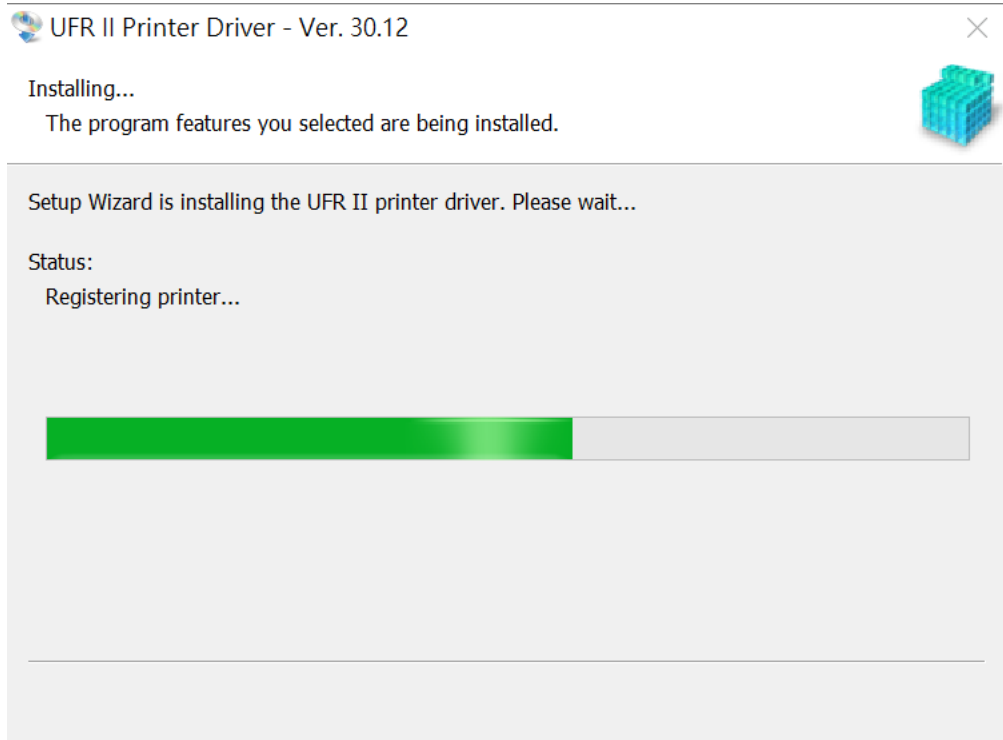


9. 確定印表機資料，按「Start」
Confirm printer information, press “Start”



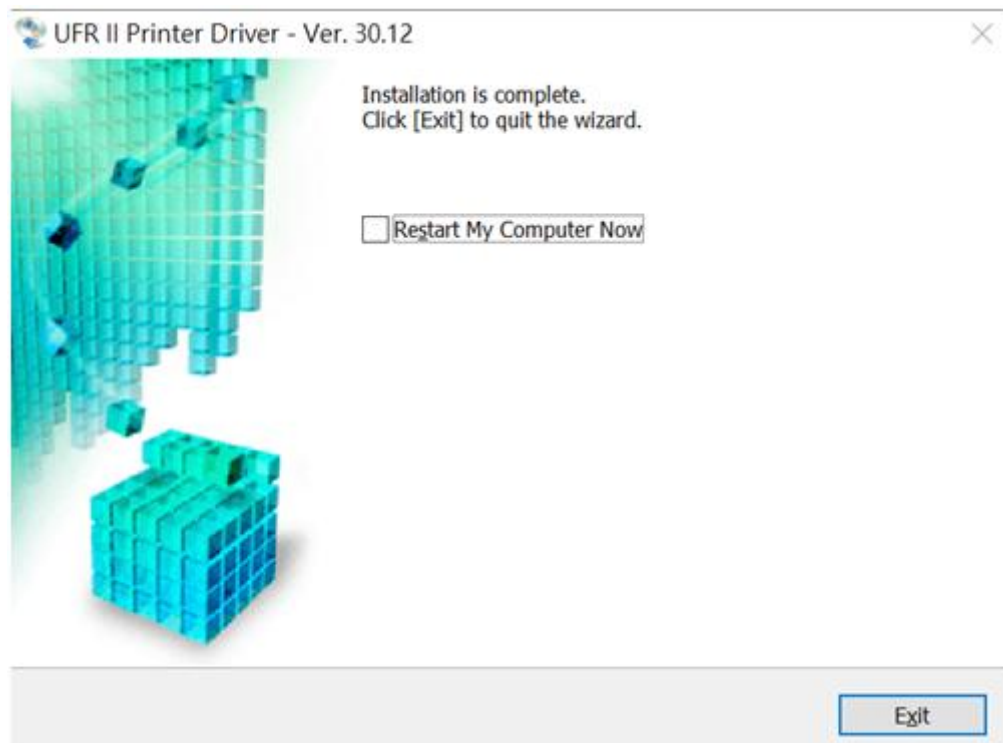
10. 等待安裝程序完成

Wait for the installation progress

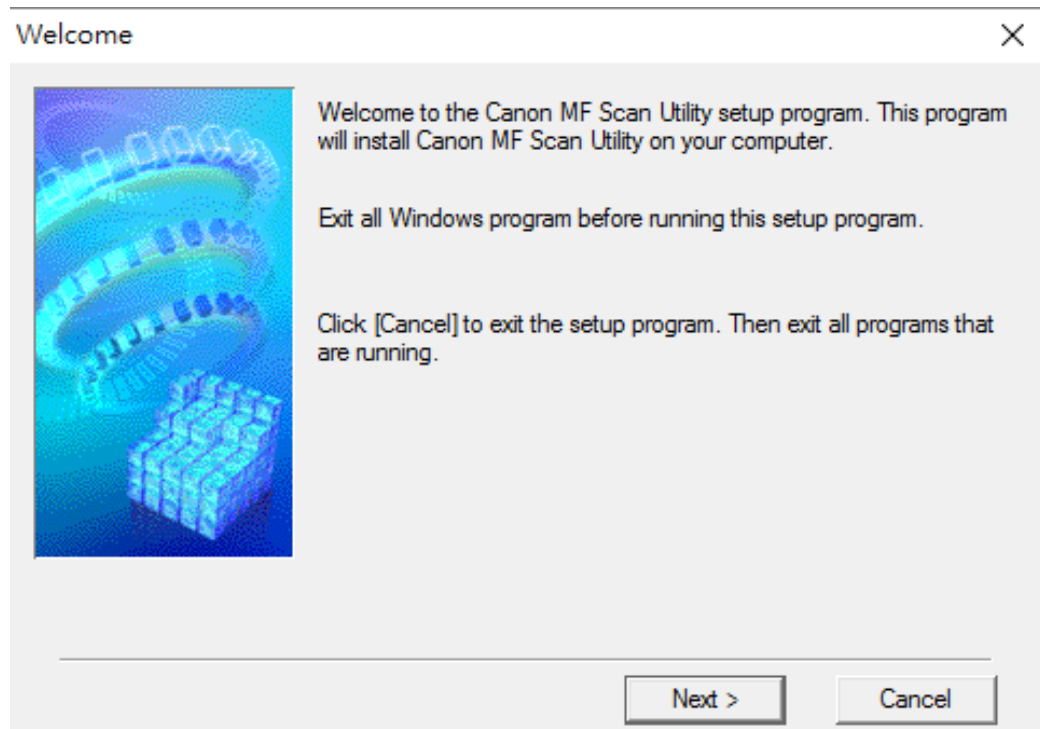


11. 按「Exit」完成安裝

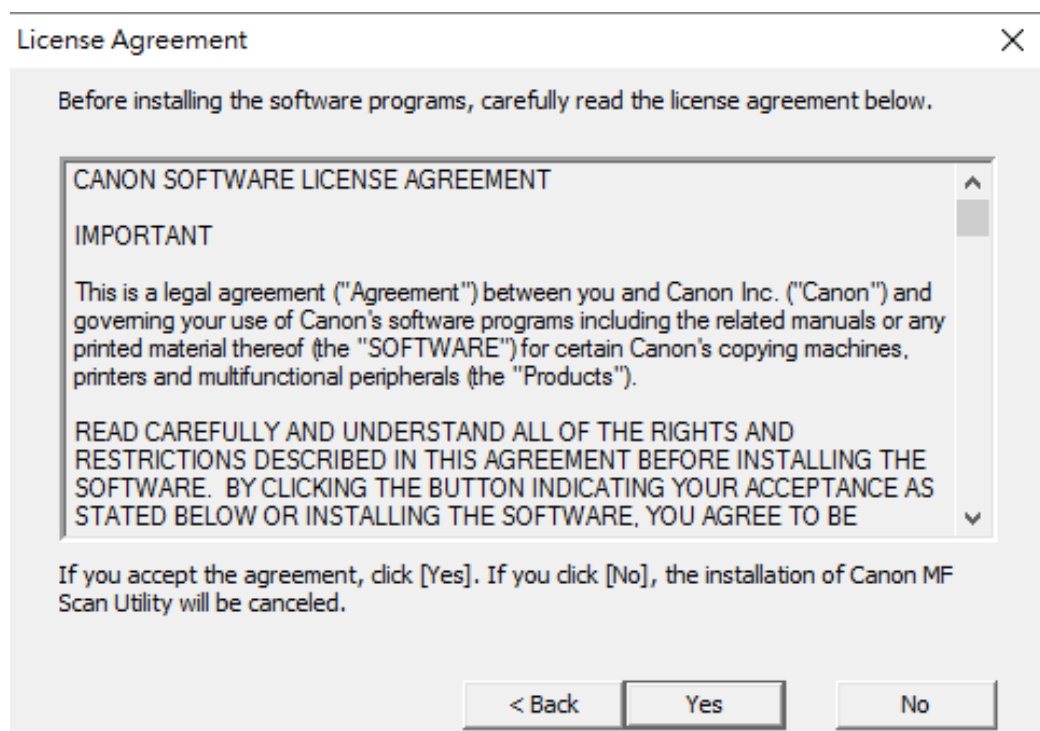
Click "Exit" to finish installation



12. 執行檔案〔MFScanUtility_XXXXX_EN.exe〕按「Next」
Run the file [MFScanUtility_XXXXX_EN.exe], click "Next"



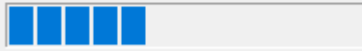
13. 按「Yes」
Click "Yes"



14. 等待安裝程序完成
Wait for the installation progress
-

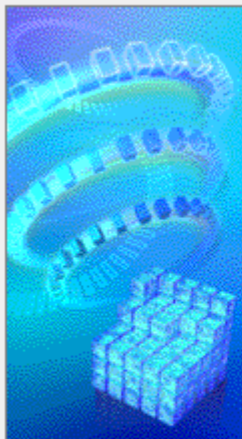
Install

C:\...\MF Scan Utility\jcutd40.dll



15. 按「Complete」完成安裝
Click "Complete" to finish installation
-

Installation Complete



Installation of Canon MF Scan Utility completed successfully.

Click [Complete] to exit the setup program.

Complete

-完-
-End-