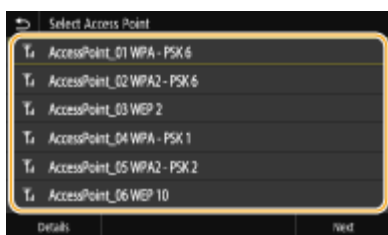


MF735Cx在Windows透過WiFi連線連接印表機之驅動程式步驟
Driver installation procedure for MF735Cx in Windows (Via Wi-Fi)

先將打印機連接到網路，詳細可參考以下步驟

Connect printer to network first, please refer to following procedure

1. 開啟印表機
Turn on the printer
2. 在主畫面中點選「功能表」
Tap “Menu” in the Home Screen
3. 點選「參數選擇」，再點選「網路」
Tap “Preferences”, then tap “Network Settings”
4. 點選「無線區域網路設定」
Tap “Wireless LAN Settings”
5. 點選 <SSID設定>
Tap “SSID setting”
6. 點選 <選擇存取點>
Tap “Select Access Point”
7. 選擇無線區域網路路由器名稱(SSID)
Select the wireless router’s signal (SSID)



8. 使用數字鍵輸入網路金鑰（路由器密碼），然後點選 <套用>
Enter the network key using the numeric keys, and tap “Apply”

9. 點選 <是>
Tap “Yes”

10. 設定完成時，會顯示「已連線」
Wait until message “Connected” is displayed

等待約 2 分鐘，直到本機的 IP 位址設定完成

Wait approximately 2 minutes until the IP address settings of the machine complete

下載及安裝步驟
Driver download and installation procedure

11. 到佳能網站<http://support-hk.canon-asia.com/>，選擇相關的印表機型號及下載印表機的驅動程式
Go to: <http://support-hk.canon-asia.com/> , select related printer model, then download the printer driver

SUPPORT & DOWNLOAD

Select your product from the menus below:

1. Choose a product category
Laser Printers ▼

2. Choose a product series
ImageCLASS ▼

3. Choose a product model
imageCLASS MF735Cx ▼

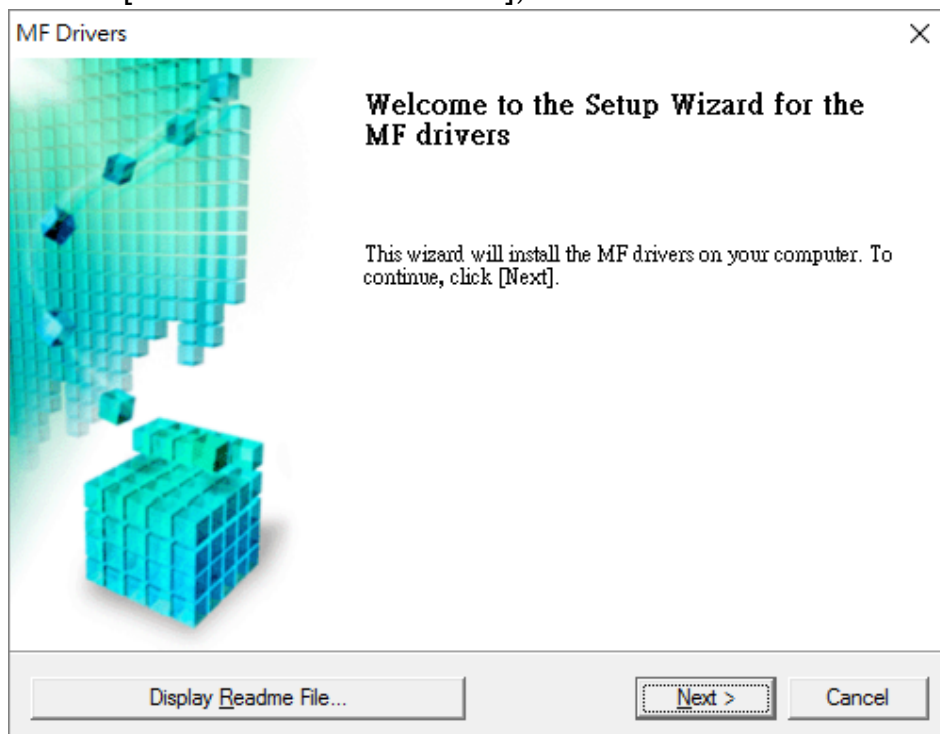
4. Choose type of document
Drivers & Softwares ▼

12. 選擇並下載以下檔案

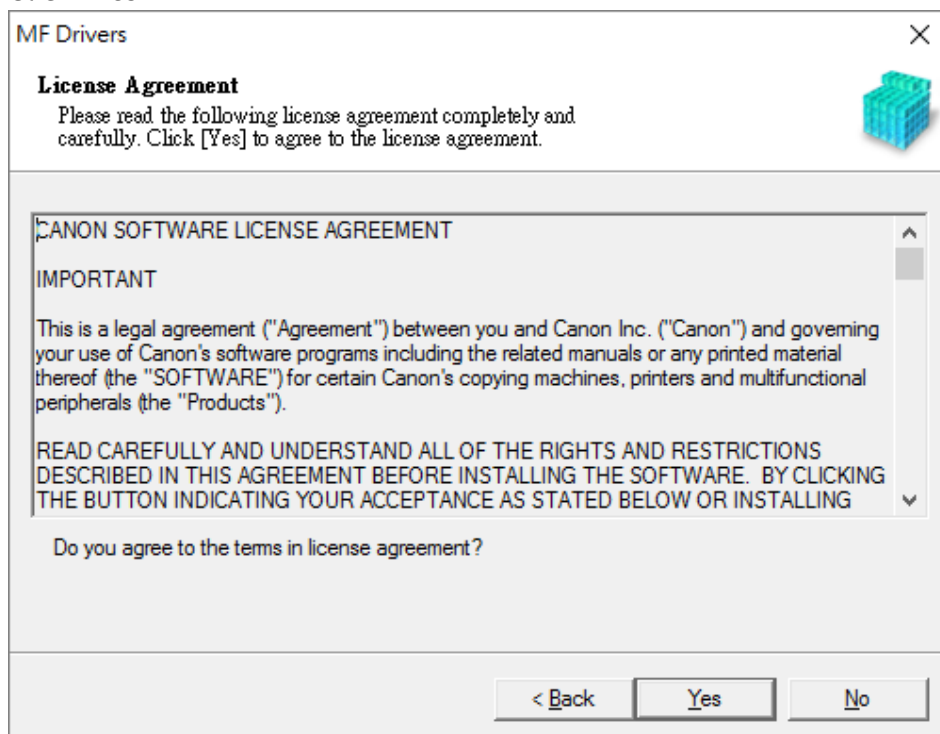
Choose and download below files:

- 打印機驅動程式 [MF735CMFDriverXXXXXXXX.exe]
Printer Driver [MF735CMFDriverXXXXXXXX.exe]
- 掃描器驅動程式 [MFScanUtility_XXXXX_EN.exe]
Scanner Driver [MFScanUtility_XXXXX_EN.exe]

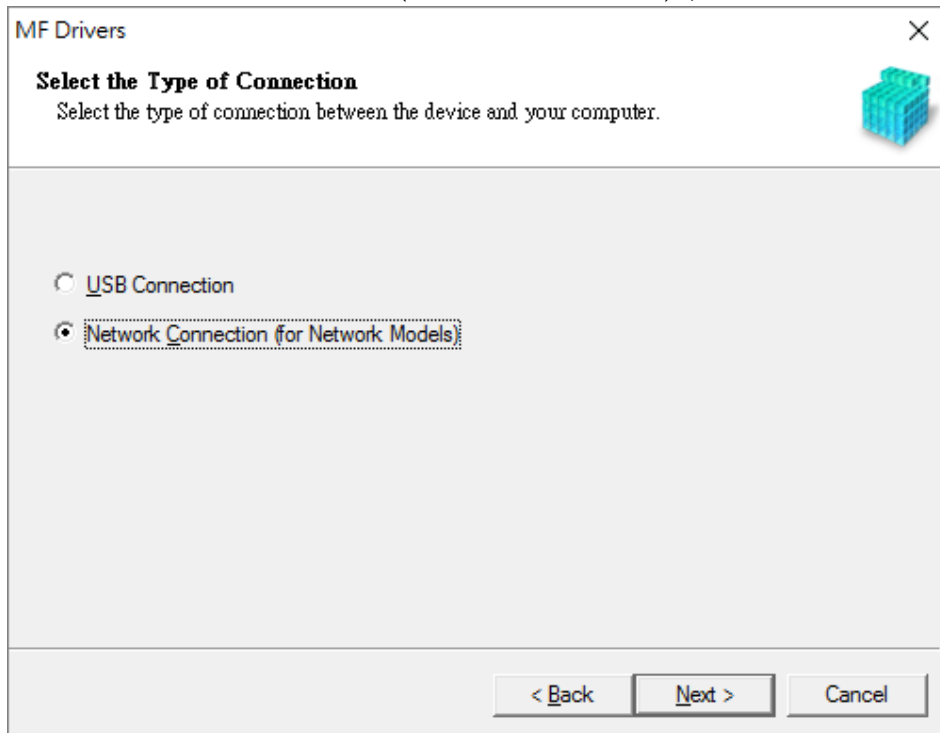
13. 執行檔案〔 MF735CMFDriverXXXXXX.exe 〕按「Next」
Run File [MF735CMFDriverXXXXXX.exe], click “Next”



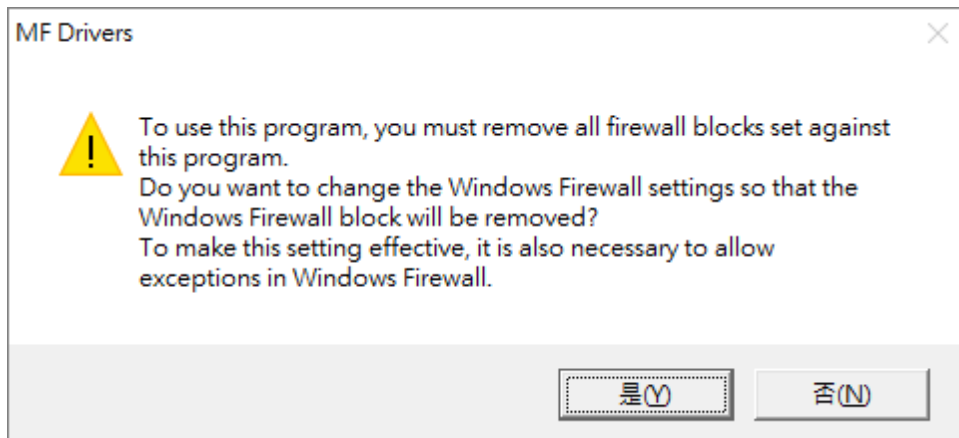
14. 按「Yes」
Click “Yes”



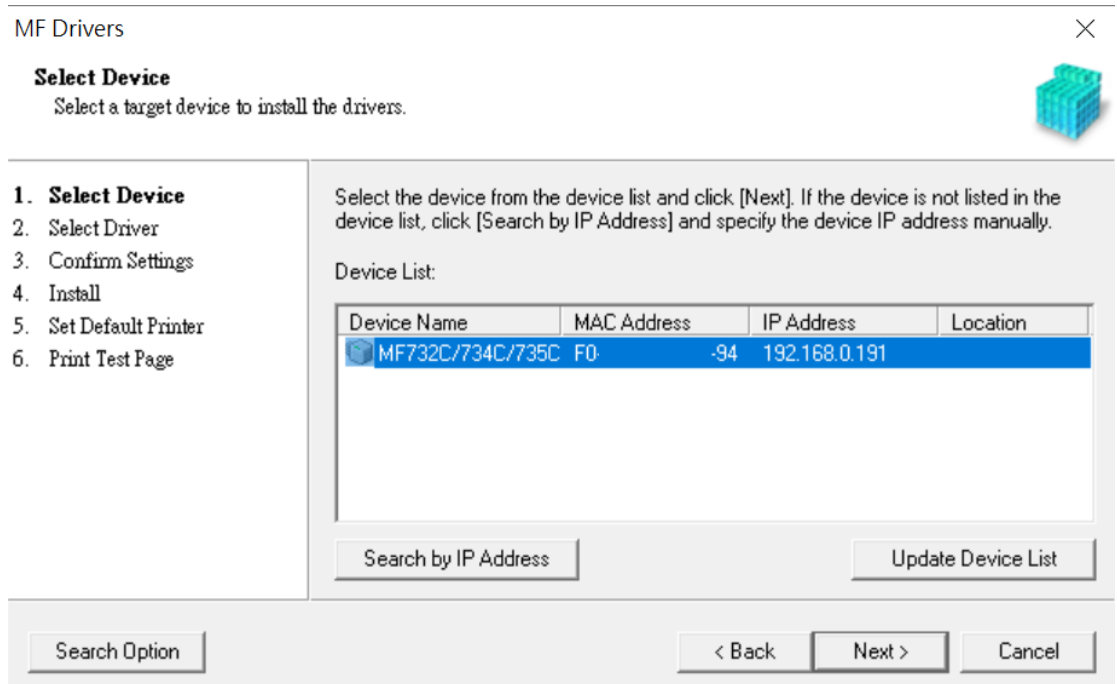
15. 選擇「Network connection (for Network Models)」，按「Next」
Choose “Network connection (for Network Models)”, click “Next”



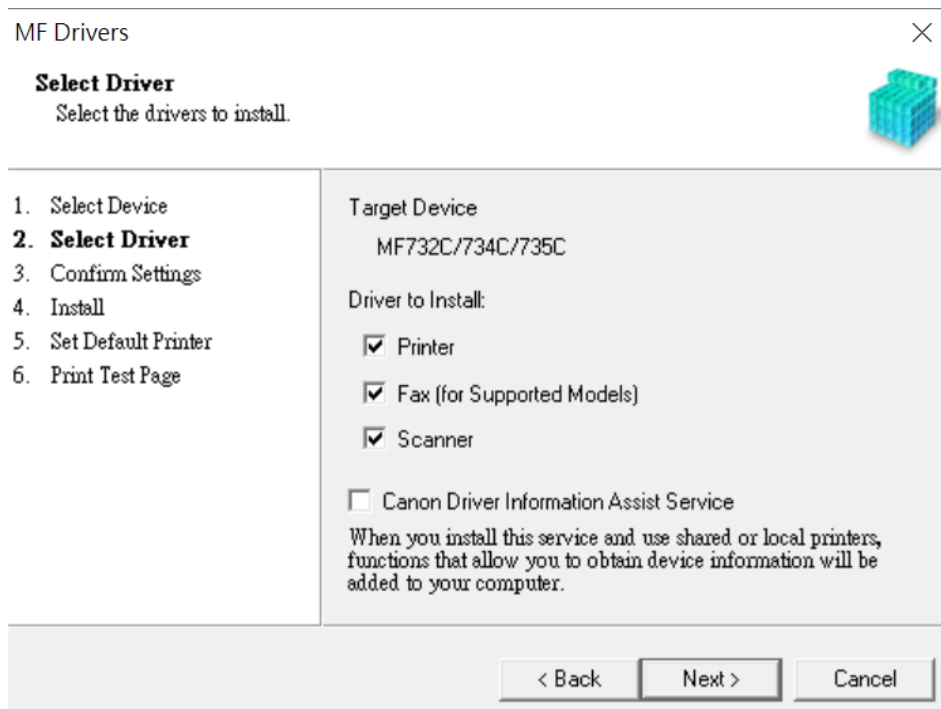
16. 按「是」
Click “Yes”



17. 程式會自動偵測網絡上的印表機，選擇後按「Next」
Program will automatic detect the network printer, choose printer and click “Next”




18. 按「Next」
Click “Next”



19. 按「Next」
Click “Next”

MF Drivers ×

Select Driver
Select the drivers to install.




<ol style="list-style-type: none"> 1. Select Device 2. Select Driver 3. Confirm Settings 4. Install 5. Set Default Printer 6. Print Test Page 	<p>Target Device MF732C/734C/735C</p> <p>Printer Drivers to Install:</p> <p><input checked="" type="checkbox"/> UFR II Printer Driver</p> <p><input type="checkbox"/> Generic Plus PCL6 Printer Driver</p> <p><input type="checkbox"/> PS3 Printer Driver</p> <p><input type="checkbox"/> UFR II V4 Printer Driver</p>
--	--

20. 按「Next」
Click “Next”

MF Drivers ×

Confirm Settings
Confirm the following setting details.



<ol style="list-style-type: none"> 1. Select Device 2. Select Driver 3. Confirm Settings 4. Install 5. Set Default Printer 6. Print Test Page 	<p>You can change the printer name. If you specify this printer as a shared printer, you can specify the shared printer name and set an additional driver (alternate driver). Confirm the settings, and then click [Next].</p> <p>Printer</p> <p>Port: CNMFNP_F0 Driver: Canon MF732C/734C/735C UFR II</p> <p>Printer Name: <input type="text" value="Canon MF732C/734C/735C UFR II"/></p> <p><input type="checkbox"/> Use as Shared Printer</p> <p>Shared Name: <input type="text"/></p> <p style="text-align: right;"><input style="margin-right: 10px;" type="button" value=" Drivers to Add... "/></p> <p style="text-align: right;">Current Device: 1 Number of Devices to Set: 2</p>
--	---

21. 按「Next」
Click “Next”

MF Drivers

Confirm Settings
Confirm the following setting details.

1. Select Device
2. Select Driver
3. **Confirm Settings**
4. Install
5. Set Default Printer
6. Print Test Page

You can change the fax name. If you specify this fax as a shared fax, you can specify the shared fax name and set an additional driver (alternate driver).
Confirm the settings, and then click [Next].

Fax

Port: CNMFNP_F0
Driver: Canon Generic FAX Driver (FAX)
Fax Name: Canon MF732C/734C/735C Fax

Use as Shared Fax
Shared Name:

Drivers to Add...

Current Device: 2
Number of Devices to Set: 2

< Back Next > Cancel

22. 按「Next」
Click “Next”

MF Drivers

Confirm Settings
The setup program will install the drivers with the following settings.

1. Select Device
2. Select Driver
3. **Confirm Settings**
4. Install
5. Set Default Printer
6. Print Test Page

Confirm the settings, then click [Start] to start installing.

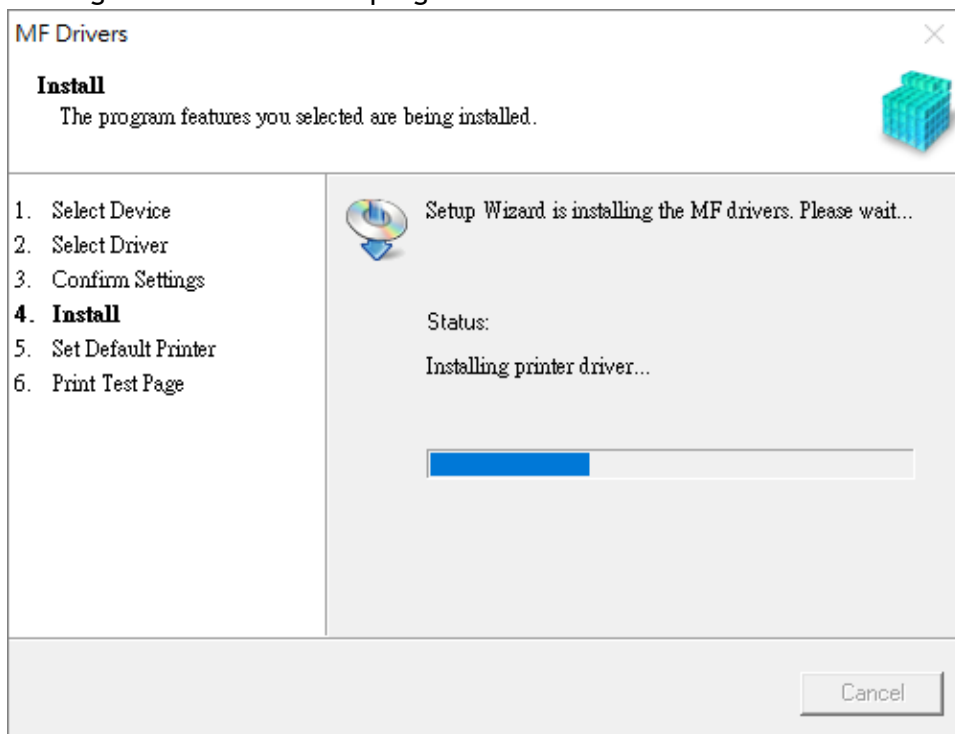
Items for Installation:

Port:CNMFNP_F0
Printer:Canon MF732C/734C/735C UFR II
Driver:Canon MF732C/734C/735C UFR II
Port:CNMFNP_F0
Fax:Canon MF732C/734C/735C Fax
Driver:Canon Generic FAX Driver (FAX)
Port:CNMFNPSCAN_F0
Scanner:Canon MF732/734/735ser_F0
Driver:Canon MF732/734/735

< Back Start Cancel

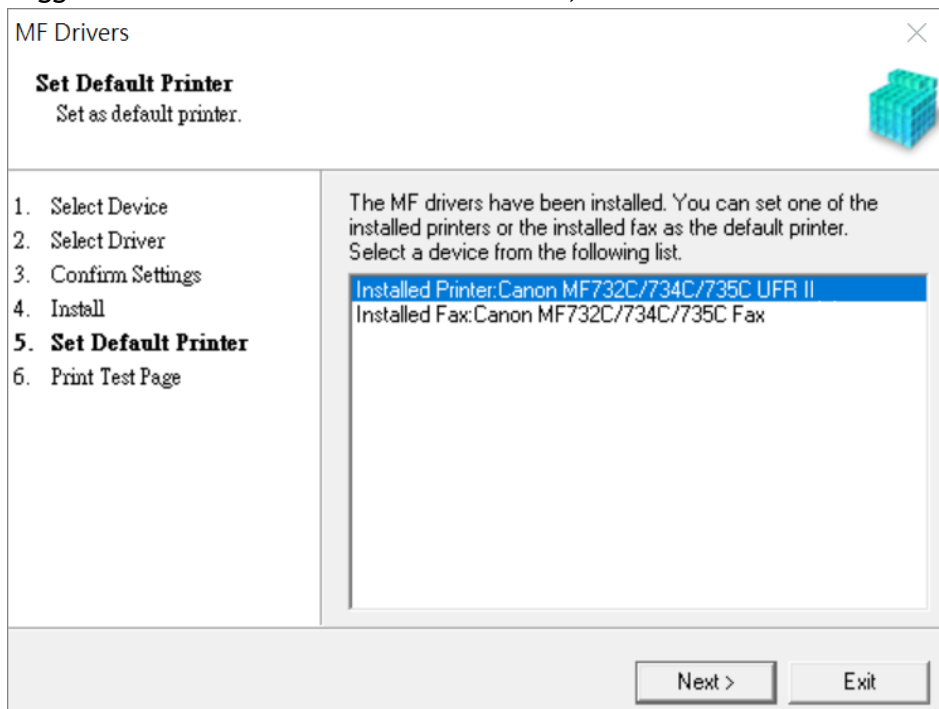
23. 等待安裝程序完成

Waiting for the installation progress

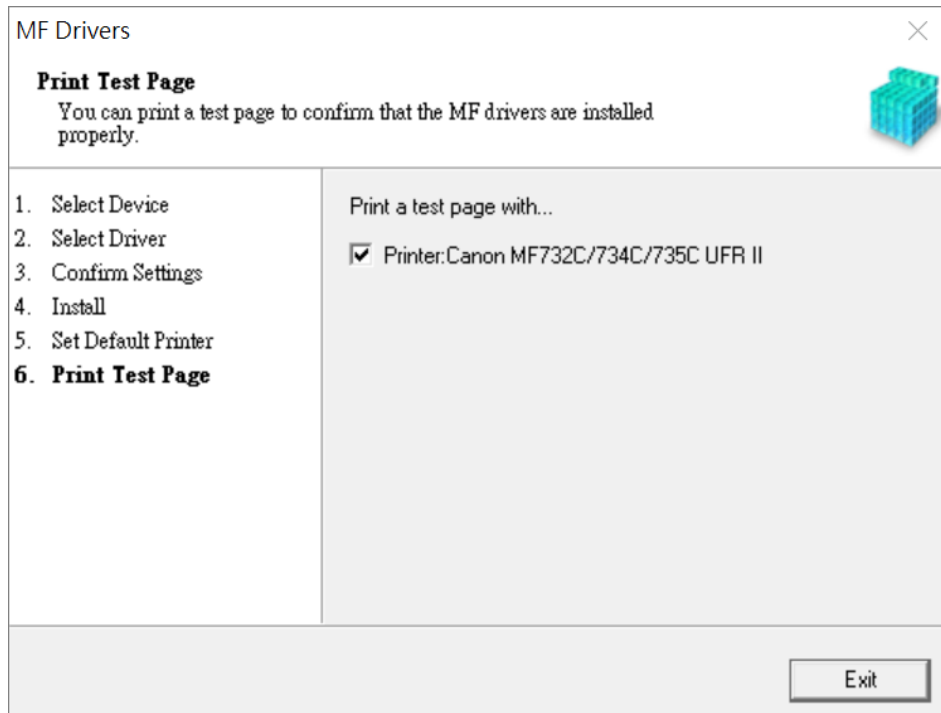


24. 建議選擇Canon MF633C/635C UFR II，按「Next」

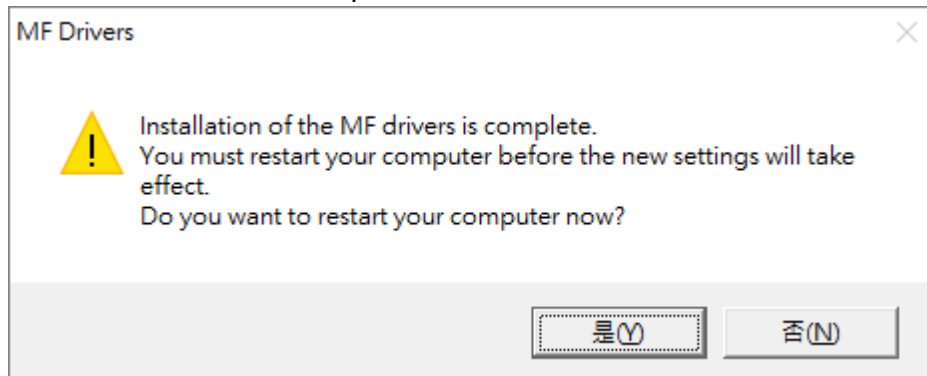
Suggest choose Canon MF633C/635C UFR II, click "Next"



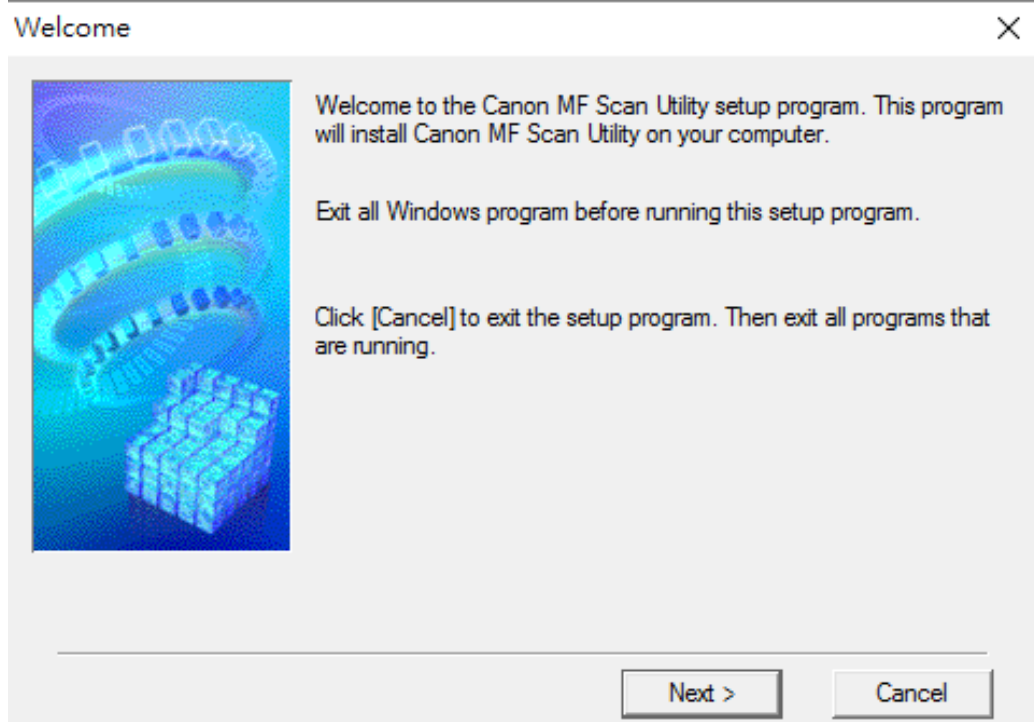
25. 按「Exit」
Click “Exit”



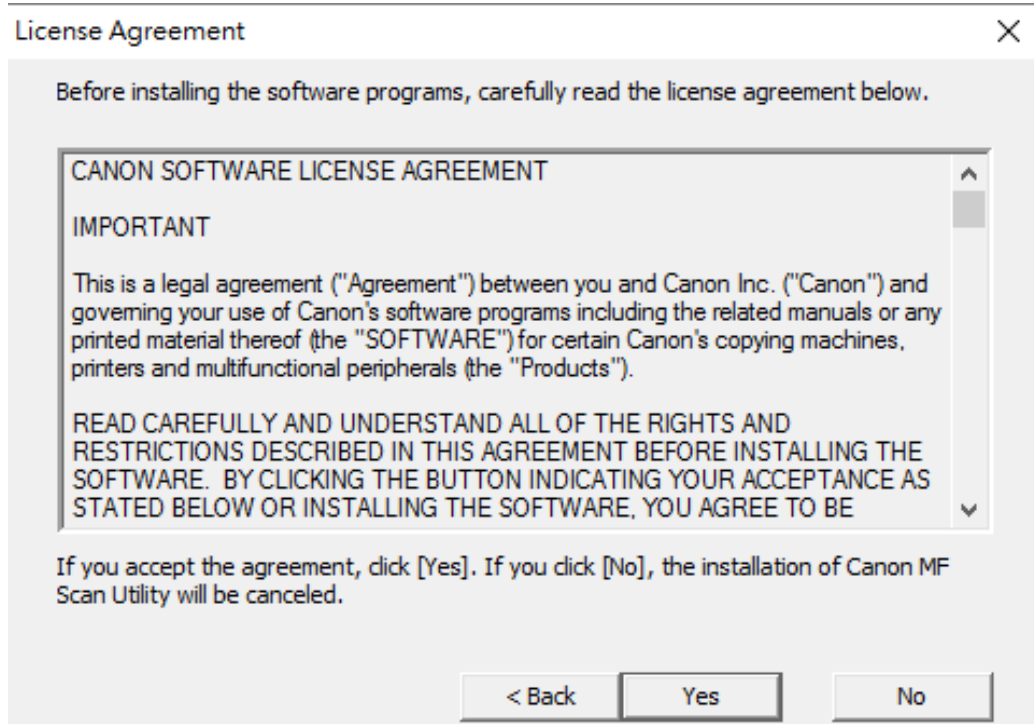
26. 按「是」重啟電腦
Click “Yes” to restart computer



27. 執行檔案〔MFScanUtility_XXXXX_EN.exe〕按「Next」
Run the file [MFScanUtility_XXXXX_EN.exe] , click “Next”

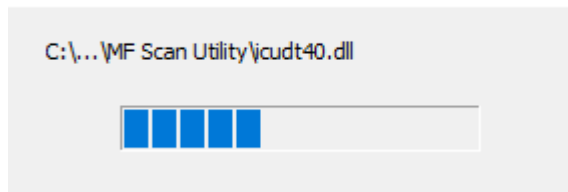


28. 按「Yes」
Click “Yes”



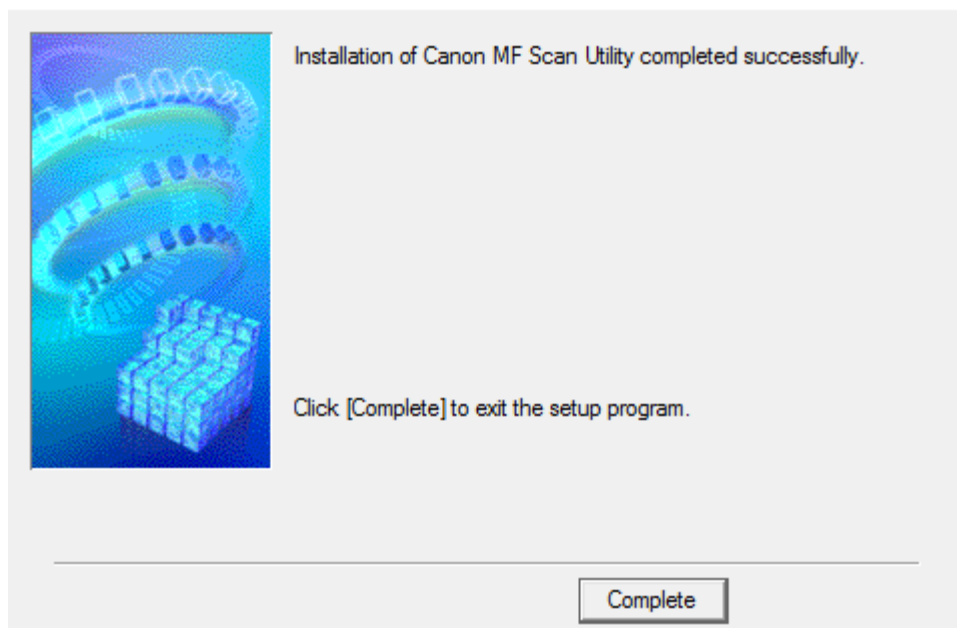
29. 等待安裝程序完成
Waiting for the installation progress
-

Install



30. 按「Complete」完成安裝
Click "Complete" to finish installation
-

Installation Complete



-完-
-End-