

MF735Cx在Windows透過LAN連線連接印表機之驅動程式步驟
Driver installation procedure for MF735Cx in Windows (Via Wired LAN)

先將打印機連接到網路，詳細可參考以下步驟

Connect printer to network first, please refer to following procedure

1. 開啟印表機
Turn on the printer

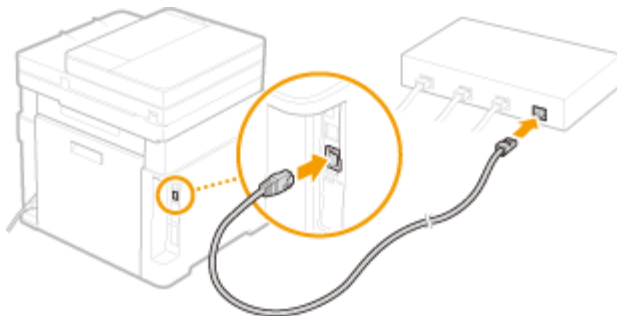
2. 在主畫面中點選「功能表」
Tap “Menu” in the Home Screen

3. 點選「參數選擇」，再點選「網路」
Tap “Preferences”, then tap “Network Settings”

4. 點選「有線 / 無線區域網路」
Tap “Select Wired / Wireless LAN”

5. 點選 <有線區域網路>
Tap “Wired LAN”

6. 使用區域網路纜線將本機連接到路由器
推入接頭，直至聽到喀嗒聲
Connect the machine to router by using a LAN cable, push the connector in until it clicks into place



等待約 2 分鐘，直到本機的 IP 位址設定完成

Wait approximately 2 minutes until IP address settings of the machine complete

下載及安裝步驟

Driver download and installation procedure

7. 到佳能網站<http://support-hk.canon-asia.com/>，選擇相關的印表機型號及下載印表機的驅動程式

Go to: <http://support-hk.canon-asia.com/> , select related printer model, then download the printer driver

SUPPORT & DOWNLOAD

Select your product from the menus below:

1. Choose a product category

Laser Printers ▼

2. Choose a product series

ImageCLASS ▼

3. Choose a product model

imageCLASS MF735Cx ▼

4. Choose type of document

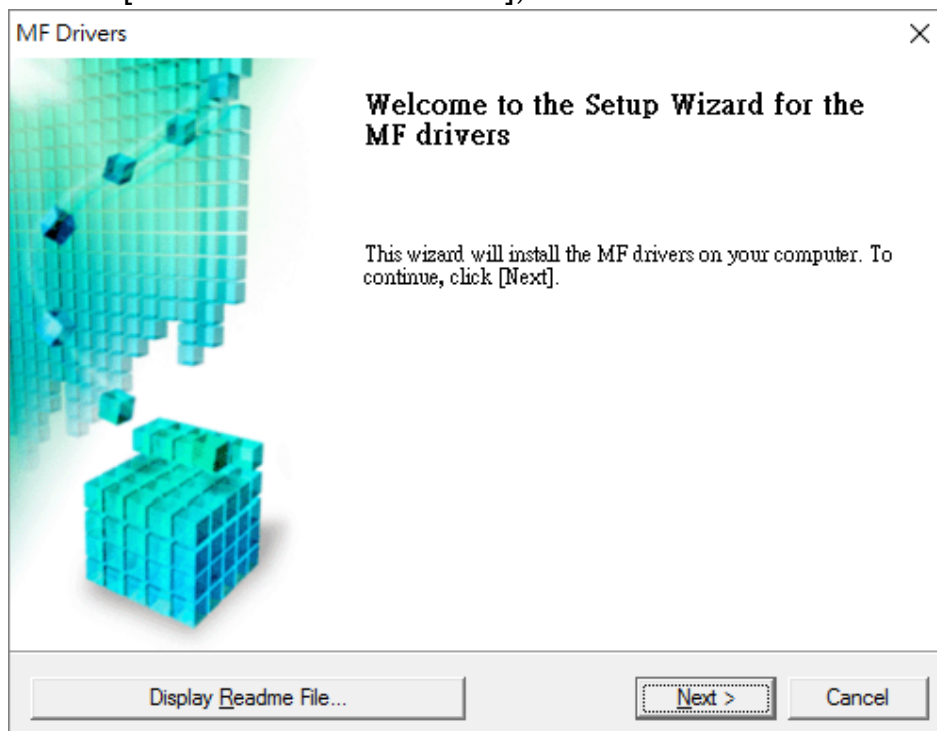
Drivers & Softwares ▼

8. 選擇並下載以下檔案

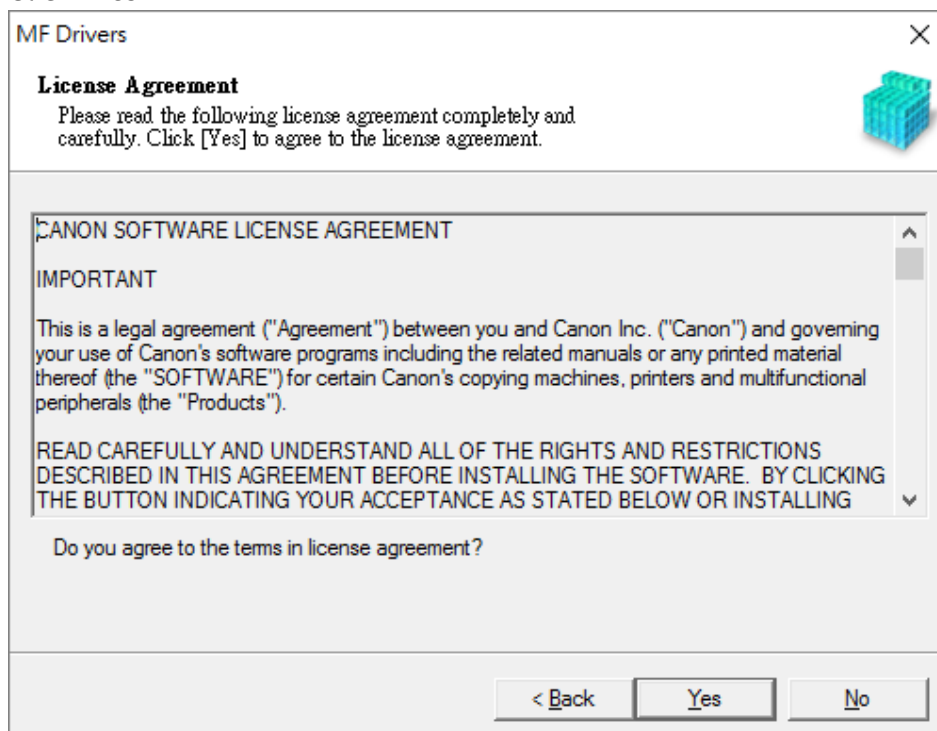
Choose and download below files:

- 打印機驅動程式 [MF735CMFDriverXXXXXXX.exe]
Printer Driver [MF735CMFDriverXXXXXXX.exe]
- 掃描器驅動程式 [MFScanUtility_XXXXX_EN.exe]
Scanner Driver [MFScanUtility_XXXXX_EN.exe]

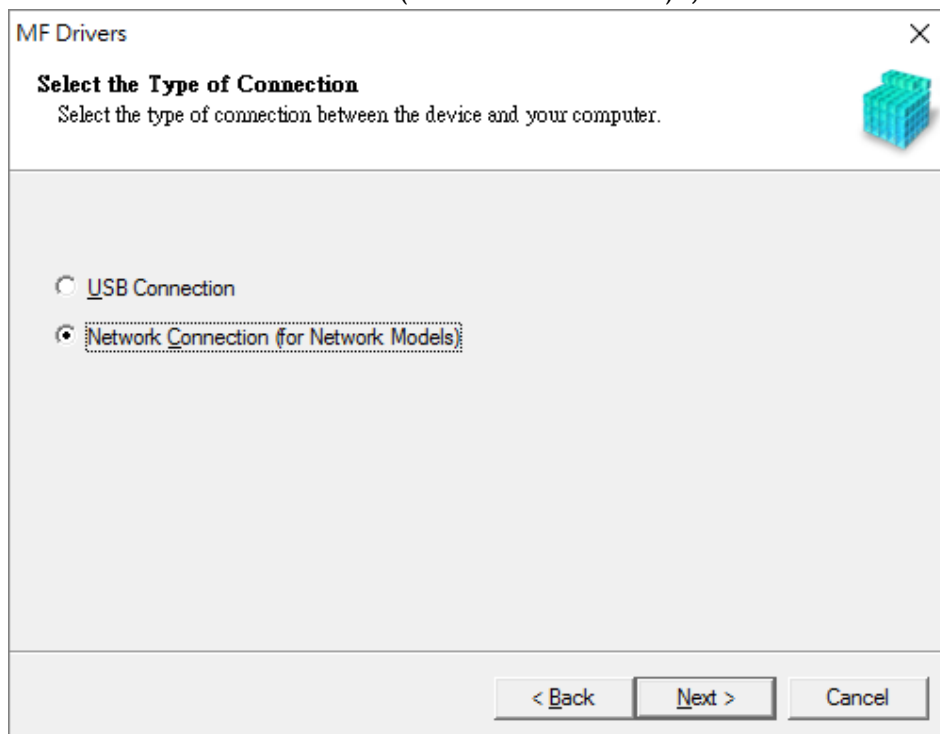
9. 執行檔案〔 MF735CMFDriverXXXXXX.exe 〕按「Next」
Run File [MF735CMFDriverXXXXXX.exe], click “Next”



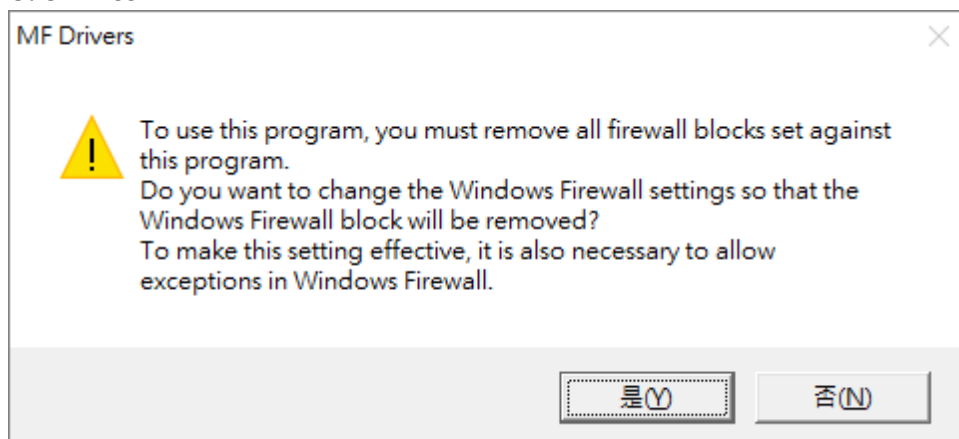
10. 按「Yes」
Click “Yes”



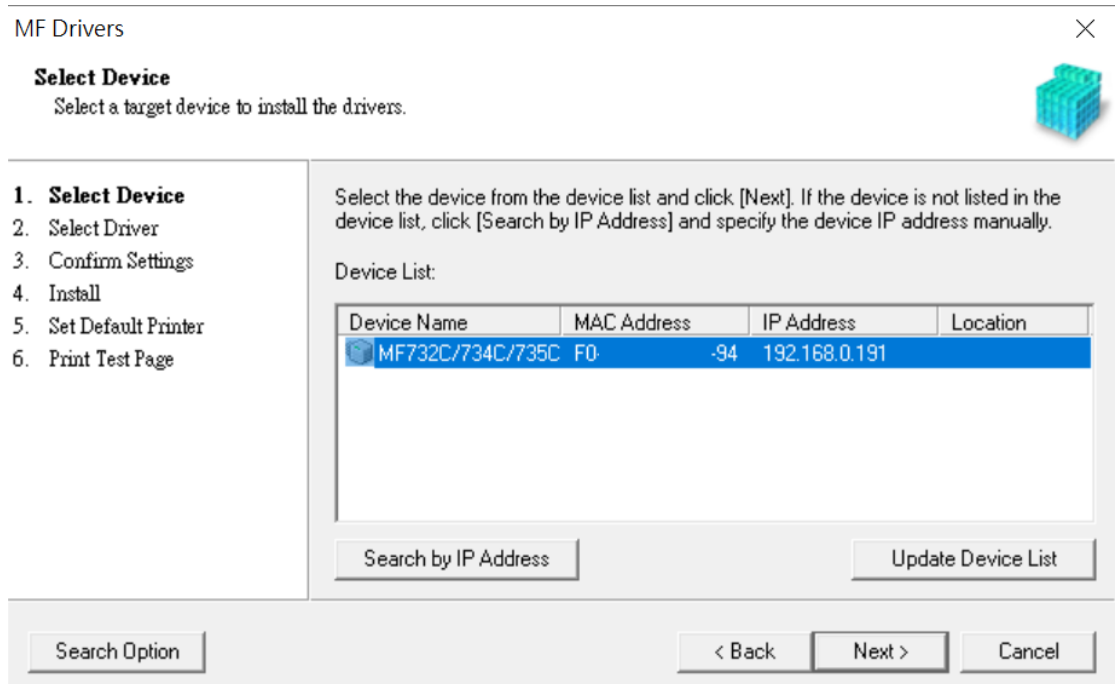
11. 選擇「Network connection (for Network Models)」，按「Next」
Choose “Network connection (for Network Models)”, click “Next”



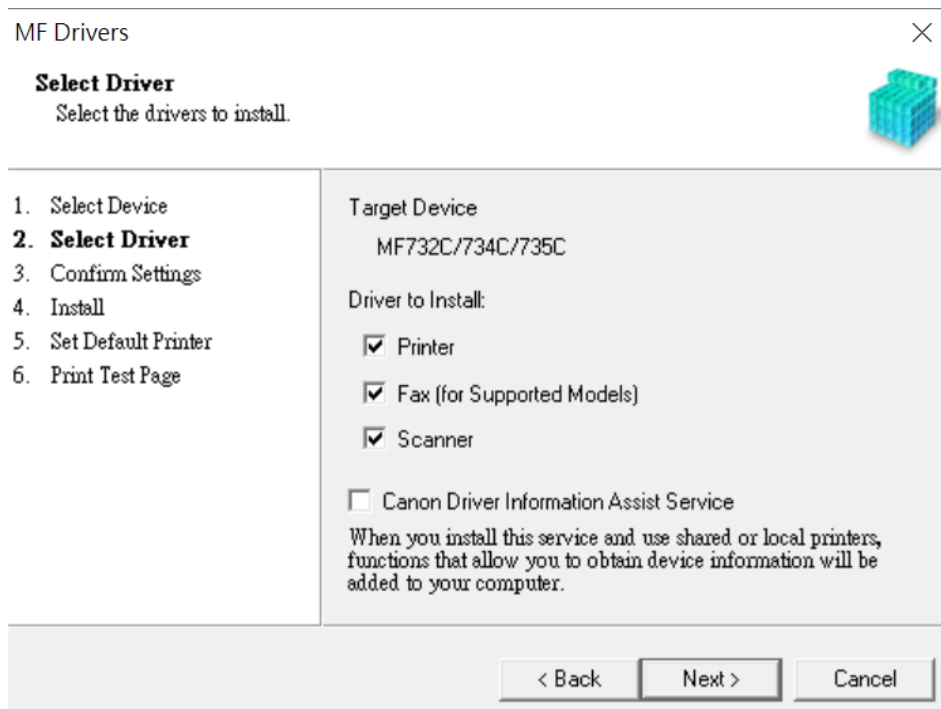
12. 按「是」
Click “Yes”



13. 程式會自動偵測網絡上的印表機，選擇後按「Next」
Program will automatic detect the network printer, choose printer and click “Next”



14. 按「Next」
Click “Next”



15. 按「Next」
Click “Next”

The screenshot shows the 'MF Drivers' dialog box with the 'Select Driver' step selected. The dialog has a title bar with a close button (X) and a small printer icon. The main area is divided into two columns. The left column contains a numbered list of steps: 1. Select Device, 2. **Select Driver**, 3. Confirm Settings, 4. Install, 5. Set Default Printer, and 6. Print Test Page. The right column displays the 'Target Device' as 'MF732C/734C/735C' and a list of 'Printer Drivers to Install' with checkboxes: UFR II Printer Driver, Generic Plus PCL6 Printer Driver, PS3 Printer Driver, and UFR II V4 Printer Driver. At the bottom, there are three buttons: '< Back', 'Next >', and 'Cancel'.

16. 按「Next」
Click “Next”

The screenshot shows the 'MF Drivers' dialog box with the 'Confirm Settings' step selected. The dialog has a title bar with a close button (X) and a small printer icon. The main area is divided into two columns. The left column contains a numbered list of steps: 1. Select Device, 2. Select Driver, 3. **Confirm Settings**, 4. Install, 5. Set Default Printer, and 6. Print Test Page. The right column contains a text block: 'You can change the printer name. If you specify this printer as a shared printer, you can specify the shared printer name and set an additional driver (alternate driver). Confirm the settings, and then click [Next].' Below this is a section titled 'Printer' with the following details: Port: CNMFNP_F0, Driver: Canon MF732C/734C/735C UFR II, and Printer Name: Canon MF732C/734C/735C UFR II. There is a checkbox for 'Use as Shared Printer' which is currently unchecked. Below the checkbox is a text field for 'Shared Name:'. To the right of the 'Shared Name' field is a button labeled 'Drivers to Add...'. At the bottom right, there is a summary: 'Current Device: 1' and 'Number of Devices to Set: 2'. At the bottom, there are three buttons: '< Back', 'Next >', and 'Cancel'.

17. 按「Next」
Click “Next”

MF Drivers

Confirm Settings
Confirm the following setting details.

1. Select Device
2. Select Driver
3. **Confirm Settings**
4. Install
5. Set Default Printer
6. Print Test Page

You can change the fax name. If you specify this fax as a shared fax, you can specify the shared fax name and set an additional driver (alternate driver).
Confirm the settings, and then click [Next].

Fax

Port: CNMFNP_F0
Driver: Canon Generic FAX Driver (FAX)
Fax Name: Canon MF732C/734C/735C Fax

Use as Shared Fax
Shared Name:

Drivers to Add...

Current Device: 2
Number of Devices to Set: 2

< Back Next > Cancel

18. 按「Next」
Click “Next”

MF Drivers

Confirm Settings
The setup program will install the drivers with the following settings.

1. Select Device
2. Select Driver
3. **Confirm Settings**
4. Install
5. Set Default Printer
6. Print Test Page

Confirm the settings, then click [Start] to start installing.

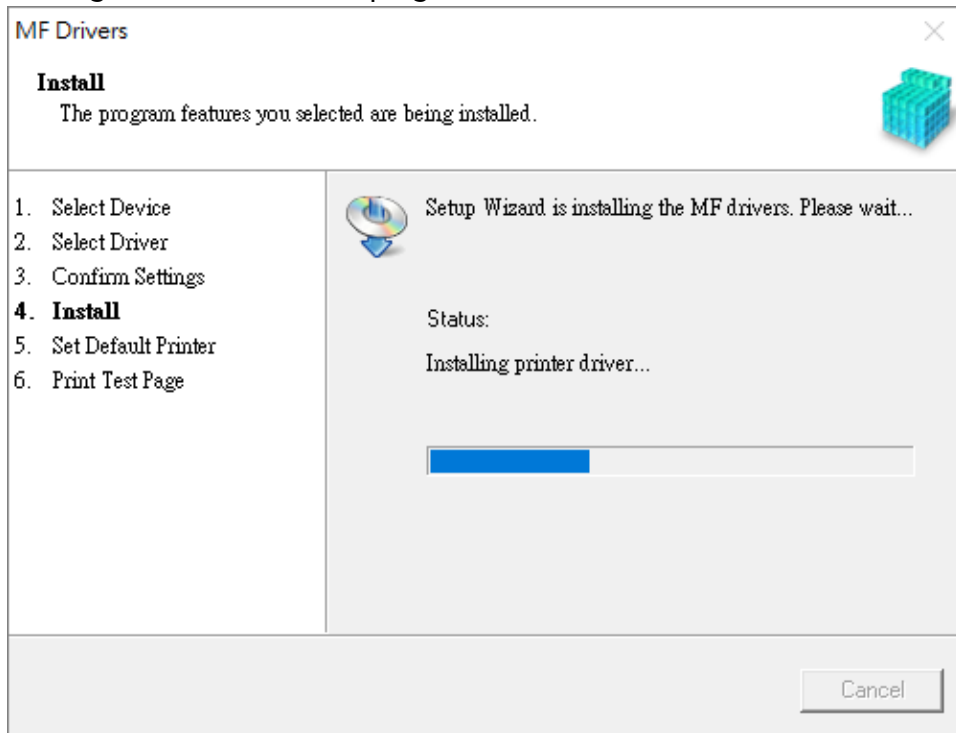
Items for Installation:

Port:CNMFNP_F0
Printer:Canon MF732C/734C/735C UFR II
Driver:Canon MF732C/734C/735C UFR II
Port:CNMFNP_F0
Fax:Canon MF732C/734C/735C Fax
Driver:Canon Generic FAX Driver (FAX)
Port:CNMFNPSCAN_F0
Scanner:Canon MF732/734/735ser_F0
Driver:Canon MF732/734/735

< Back Start Cancel

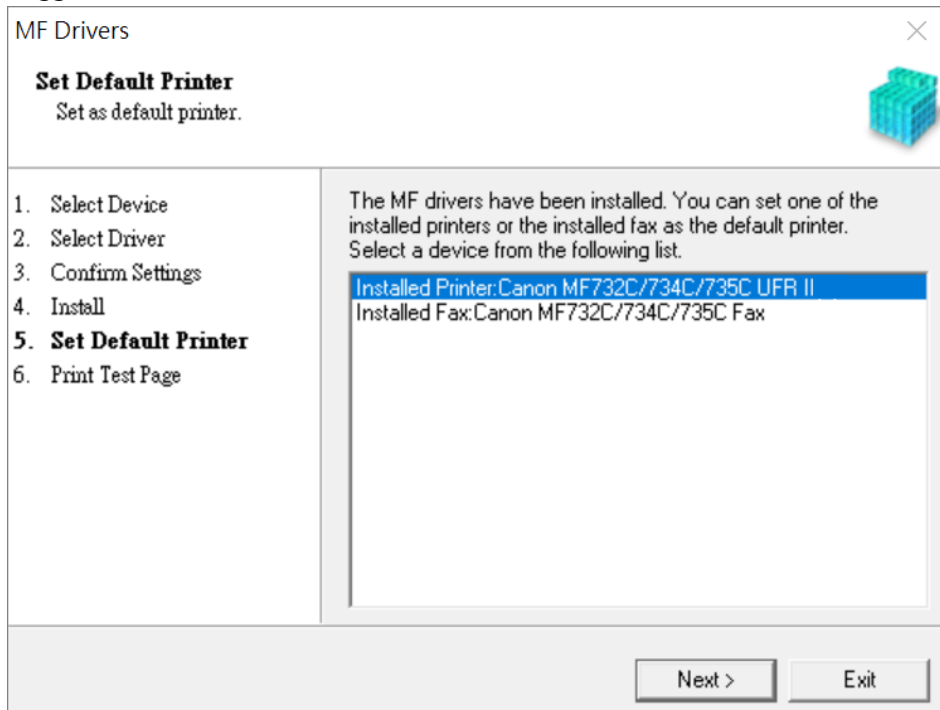
19. 等待安裝程序完成

Waiting for the installation progress

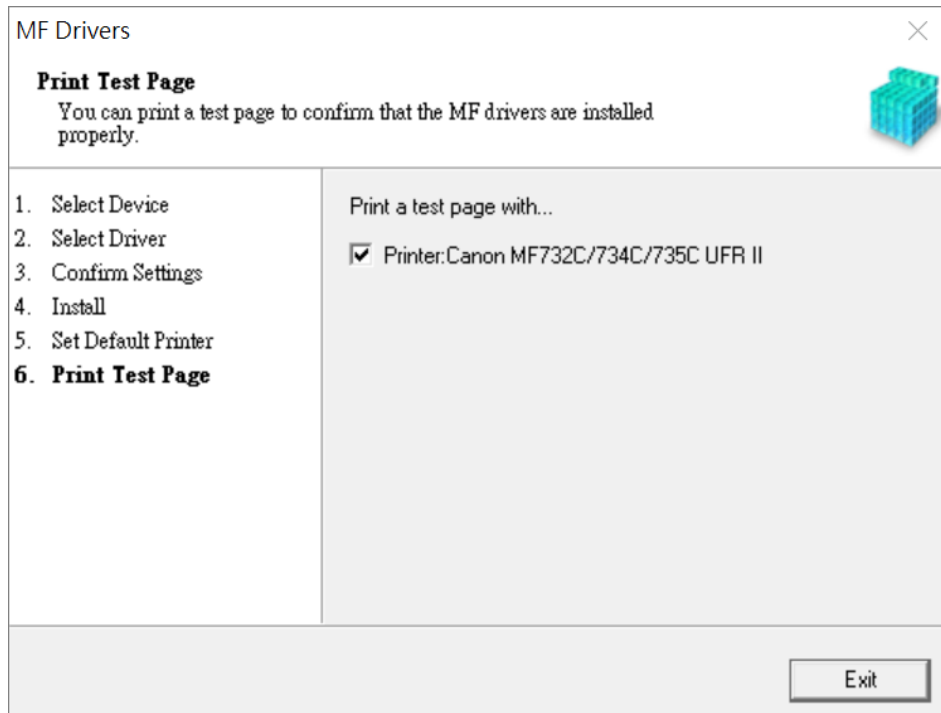


20. 建議選擇Canon MF633C/635C UFR II，按「Next」

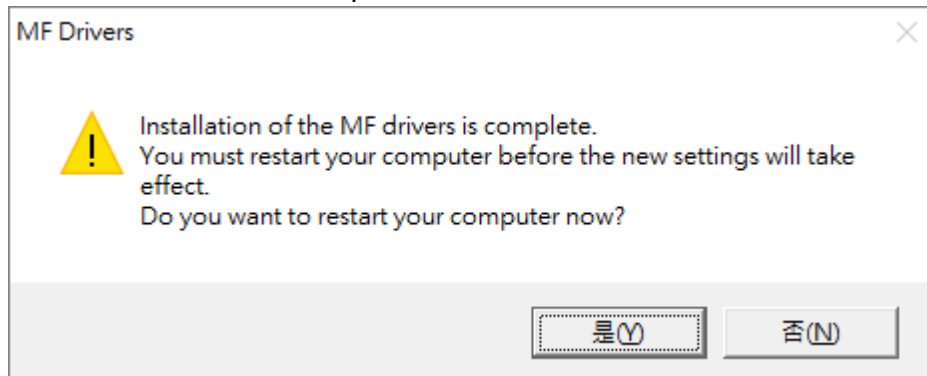
Suggest choose Canon MF633C/635C UFR II, click "Next"



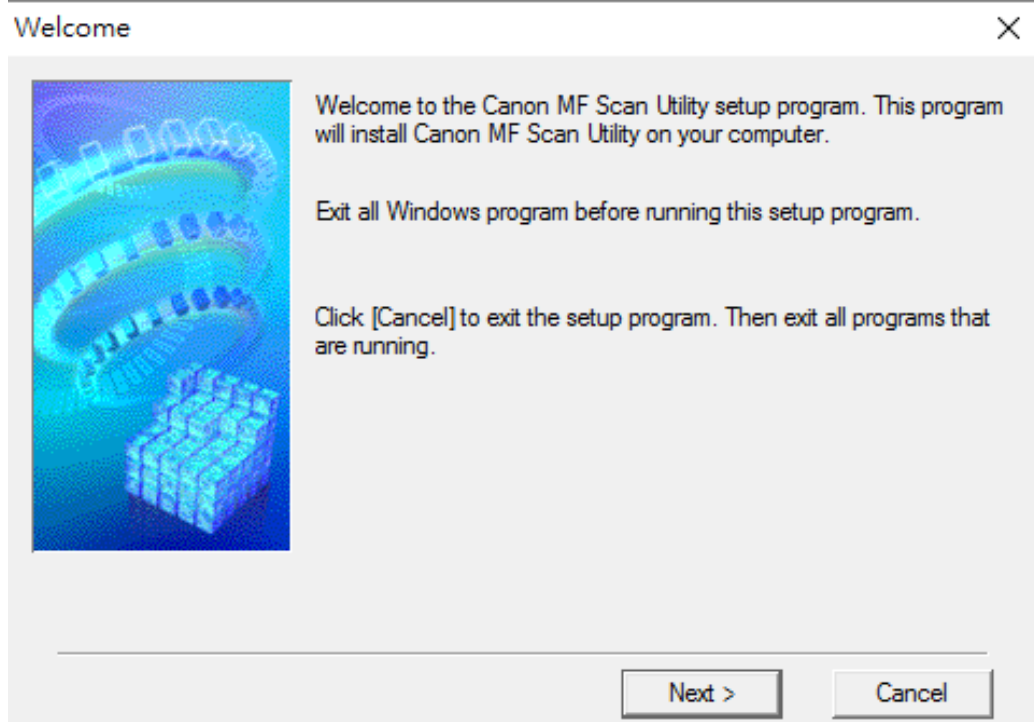
21. 按「Exit」
Click “Exit”



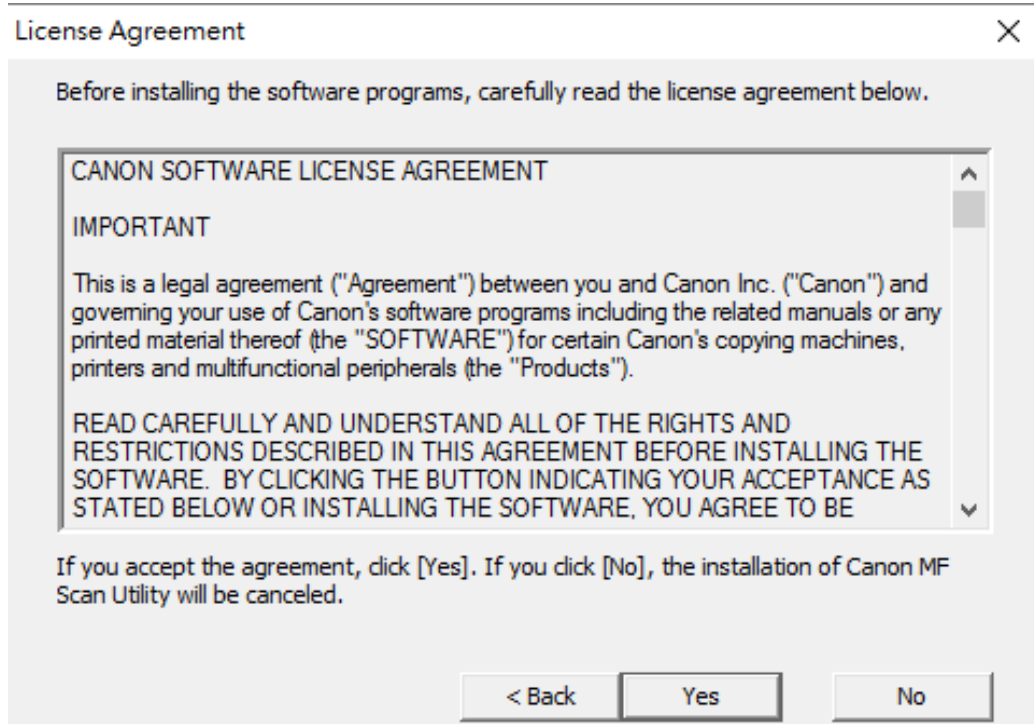
22. 按「是」重啟電腦
Click “Yes” to restart computer



23. 執行檔案〔 MFScanUtility_XXXXX_EN.exe 〕按「Next」
Run the file [MFScanUtility_XXXXX_EN.exe] , click “Next”

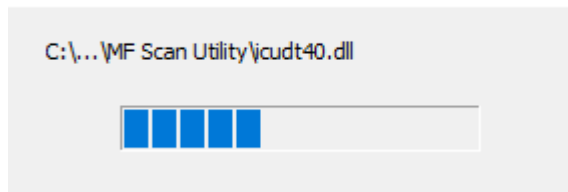


24. 按「Yes」
Click “Yes”



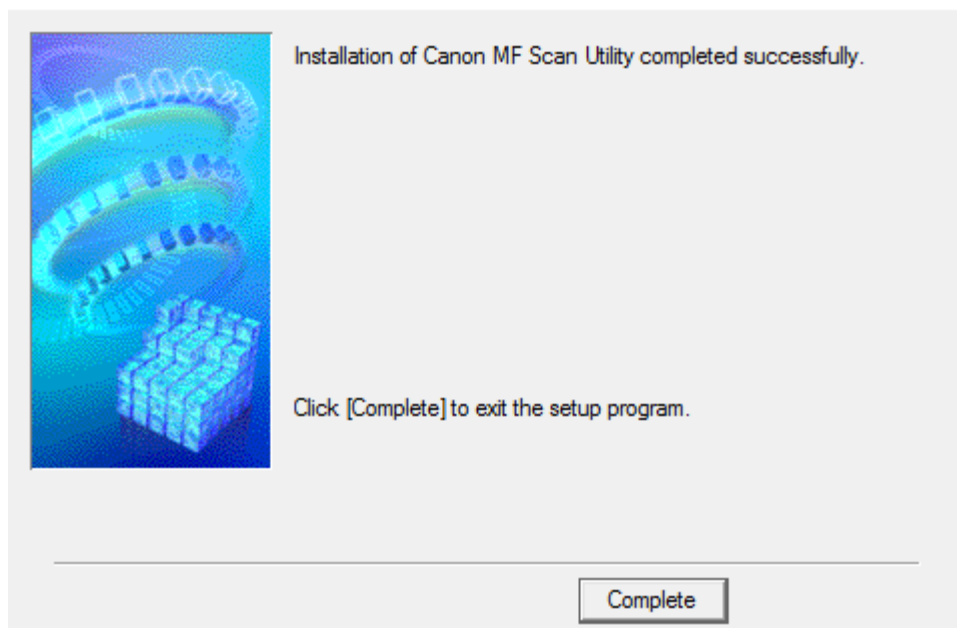
25. 等待安裝程序完成
Waiting for the installation progress
-

Install



26. 按「Complete」完成安裝
Click "Complete" to finish installation
-

Installation Complete



-完-
-End-