

## MG3670 - 無線設定 (流動裝置)

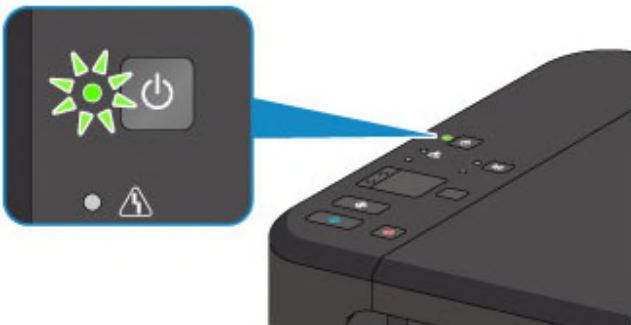
### MG3670 – Wi-Fi Setup (Mobile Device)

於流動裝置下載及安裝Canon PRINT Inkjet / SELPHY  
Install Canon PRINT Inkjet/SELPHY on the mobile device

Android: <https://play.google.com/store/apps/details?id=jp.co.canon.bsd.ad.pixmaprint&hl=en>  
iOS: <https://itunes.apple.com/hk/app/canon-print-inkjet-selphy/id664425773?mt=8>

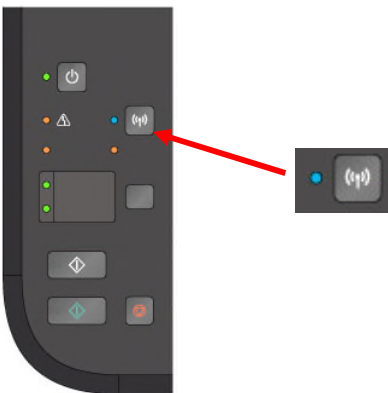
1. 確認印表機電源已開啟

Confirm the printer was turned on



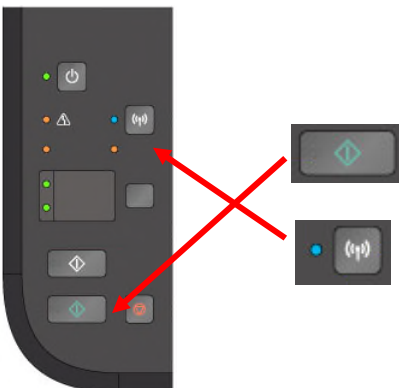
2. 按住印表機上的 Wi-Fi 按鈕，直至電源指示燈閃爍

Press and hold the “Wireless” button on the printer until the wireless lamp flashes



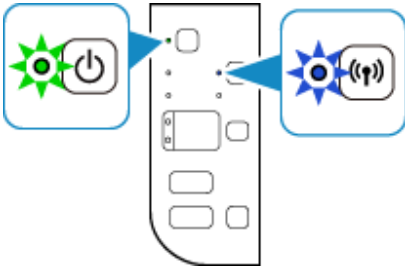
3. 按彩色按鈕，然後按 Wi-Fi 按鈕

Press “Color” button, then the “Wi-Fi” button



4. 確保 Wi-Fi 指示燈快速閃爍且電源指示燈亮起

Make sure the Wi-Fi lamp flashes quickly and the ON lamp is lit



5. 從裝置上的 Wi-Fi 設定中選擇印表機的網路名稱(以「Canon\_ij\_」開頭的 SSID)

Select the printer's network name (Canon\_ij\_) from the Wi-Fi settings on your device

6. 執行 Canon PRINT Inkjet / SELPHY

Run the Canon PRINT Inkjet / SELPHY

7. 點選 

Tap 



8. 點選“註冊印表機”

Tap “Register Printer”



9. 按“確定”

Tap “OK”



10. 如正在使用 Android 裝置，請跳到下一步繼續  
如正在使用 iOS 裝置，請按“自動選擇連接方法（推薦）”  
If using Android device, please jump to next step and continue  
If using iOS device, please tap “Auto Select Conn. Method (recommended)”

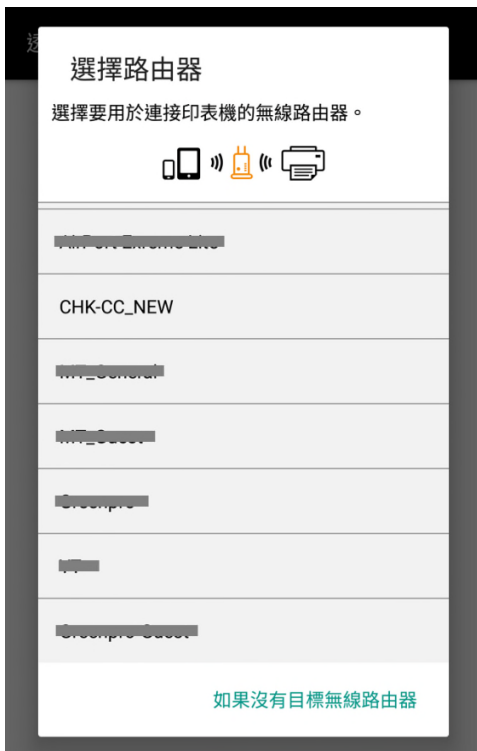


11. 請稍候  
Please wait



12. 點選要連接印表機的無線路由器 SSID

Tap the SSID of wireless router which you want to connect with the printer



13. 輸入無線路由器的密碼，然後按“確定”

Enter the passphrase of wireless router, then tap “OK”



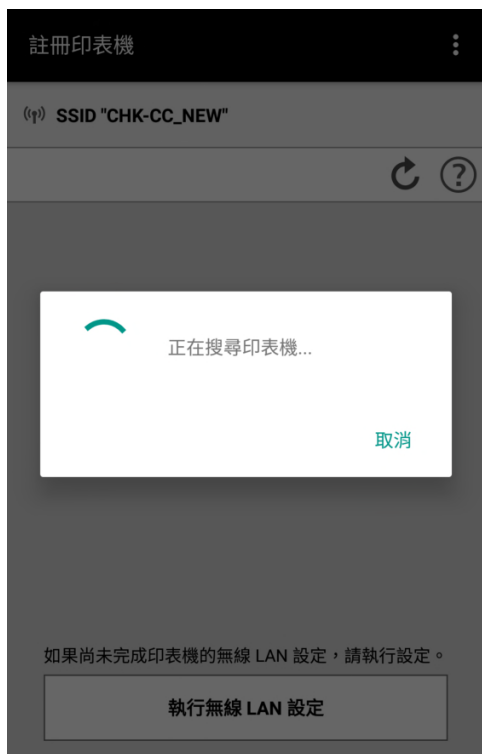
14. 按“確定”

Tap “OK”



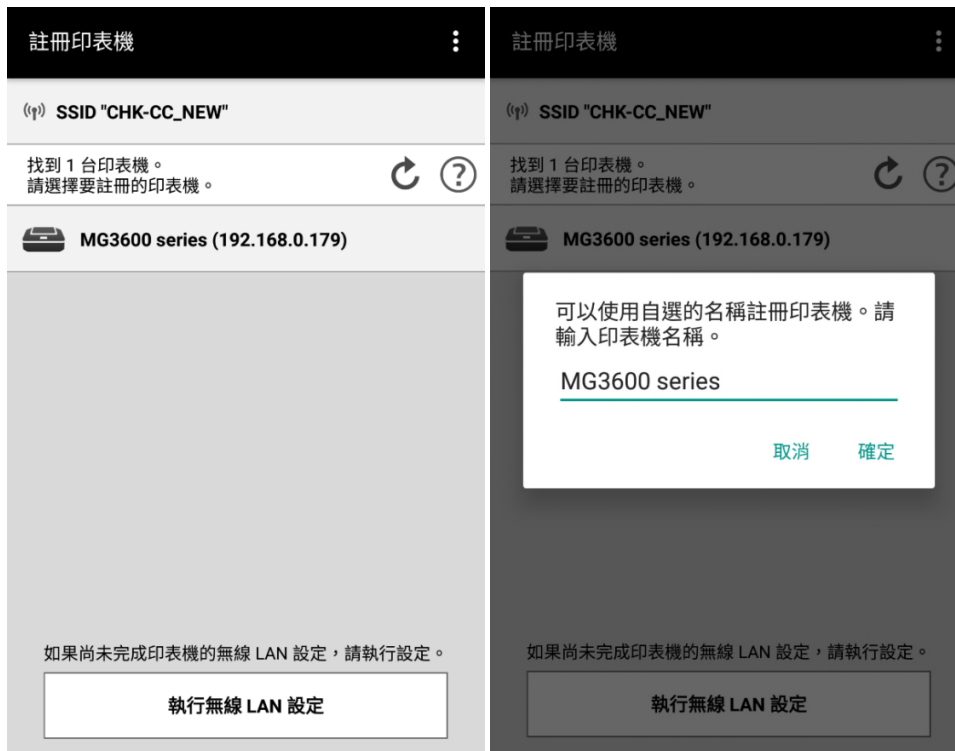
15. 請稍候

Please wait



16. 點選印表機，然後按“確定”完成無線設定

Tap the printer name, then tap “OK” to finish the Wi-Fi setup



-完-  
-End-