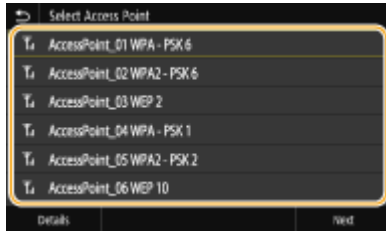


**MF635Cx 在 Windows 透過 WiFi 連線連接印表機之驅動程式步驟**  
**Driver installation procedure for MF635Cx in Windows (Via Wi-Fi)**

先將打印機連接到網路，詳細可參考以下步驟

Connect printer to network first, please refer to following procedure

1. 開啟印表機  
Turn on the printer
2. 在主畫面中點選「功能表」  
Tap “Menu” in the Home Screen
3. 點選「參數選擇」，再點選「網路」  
Tap “Preferences”, then tap “Network Settings”
4. 點選「無線區域網路設定」  
Tap “Wireless LAN Settings”
5. 點選 <SSID 設定>  
Tap “SSID setting”
6. 點選 <選擇存取點>  
Tap “Select Access Point”
7. 選擇無線區域網路路由器名稱( SSID )  
Select the wireless router’s signal (SSID)



8. 使用數字鍵輸入網路金鑰（路由器密碼），然後點選 <套用>  
Enter the network key using the numeric keys, and tap “Apply”
9. 點選 <是>  
Tap “Yes”
10. 設定完成時，會顯示「已連線」  
Wait until message “Connected” is displayed

等待約 2 分鐘，直到本機的 IP 位址設定完成

Wait approximately 2 minutes until the IP address settings of the machine complete

## 下載及安裝步驟

### Driver download and installation procedure

11. 到佳能網站 <https://hk.canon/en/support/imageCLASS%20MF635Cx/model>，下載印表機的驅動程式

Go to: <https://hk.canon/en/support/imageCLASS%20MF635Cx/model> , download the printer driver

12. 選擇並下載以下檔案

Choose and download below files:

- 打印機驅動程式 / Printer Driver

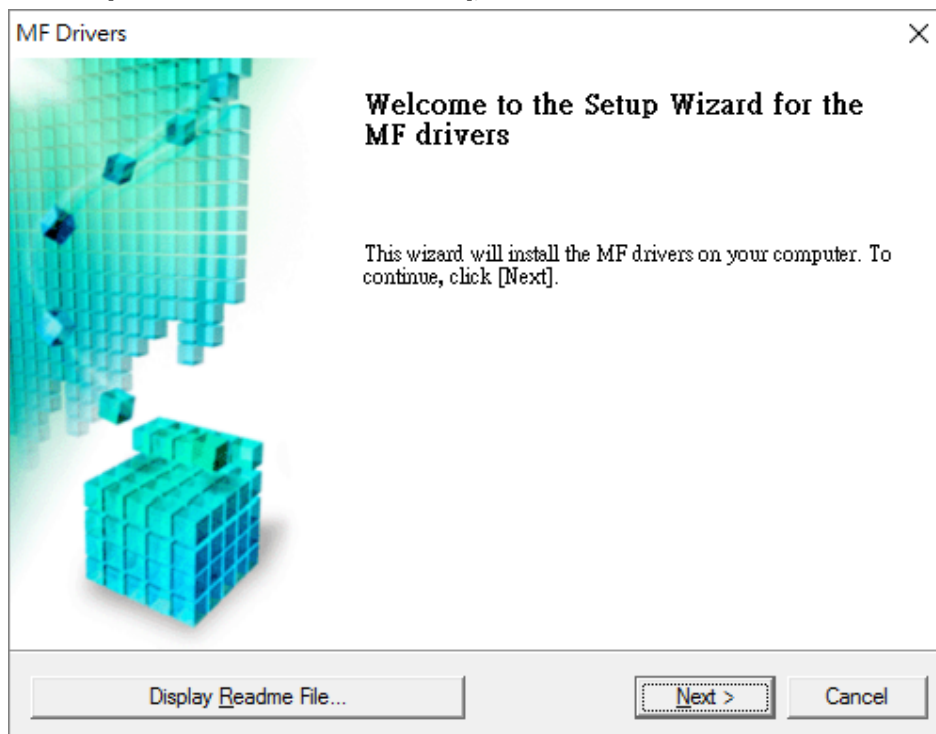
[\[Windows x64bit\] MF635Cx/MF633Cdw MFDivers \(Generic Plus UFR II / Generic Plus PCL6 / Generic Plus PS3 / Generic FAX / ScanGear\)](#)

- 掃描器軟件 / Scanning software

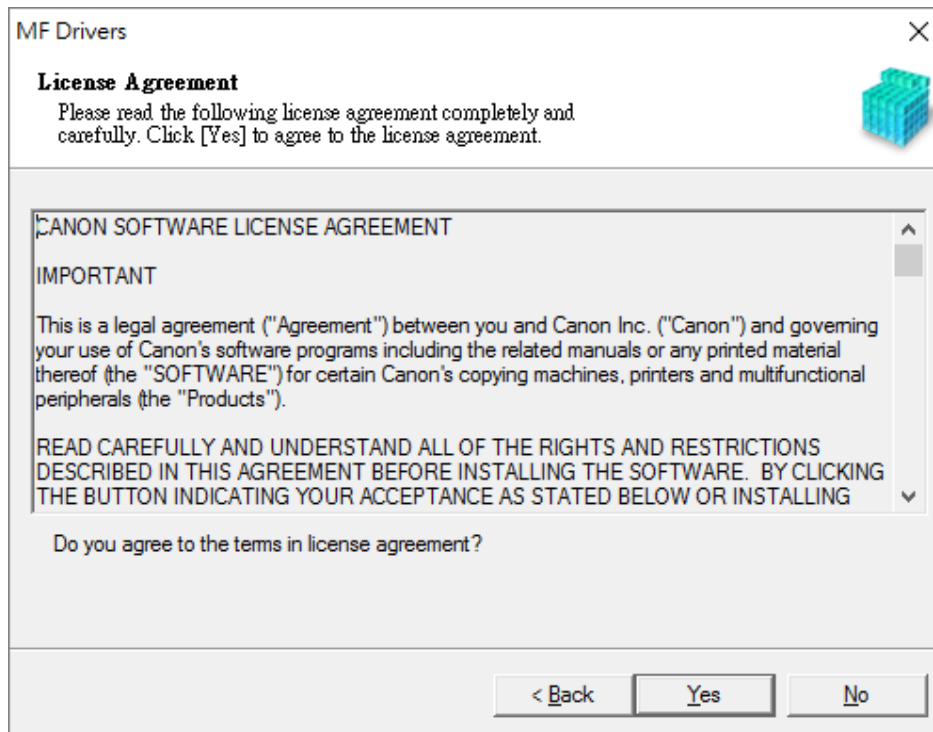
[\[Windows 32bit & 64bit\] MF Scan Utility Ver.x.x.x.x](#)

13. 執行檔案〔MF633CMFDriverXXXXXX.exe〕按「Next」

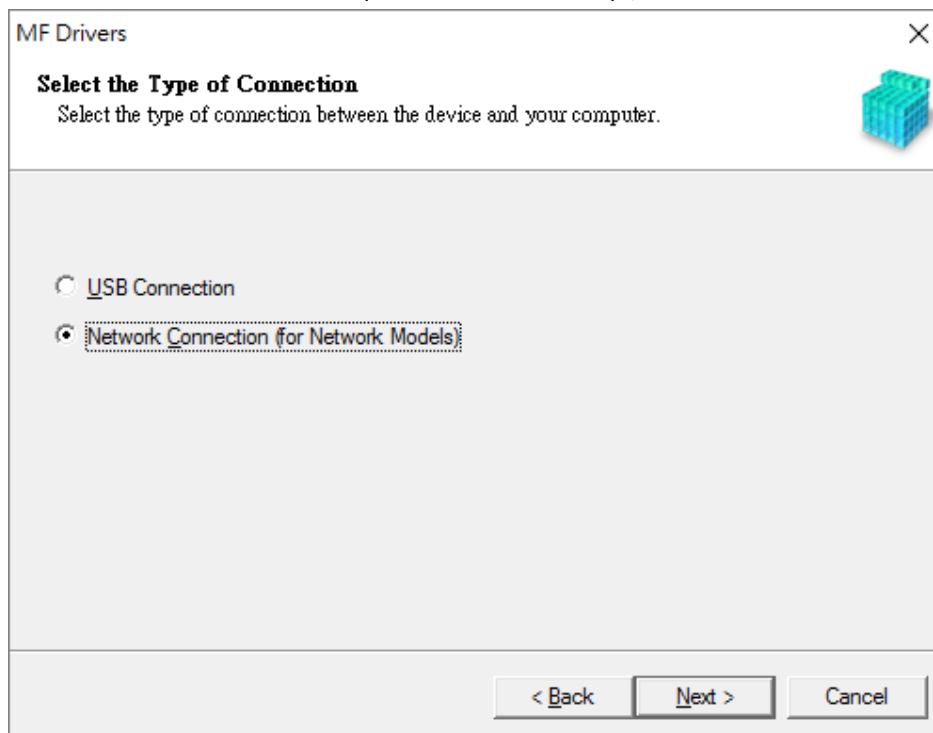
Run File [MF633CMFDriverXXXXXX.exe], click "Next"



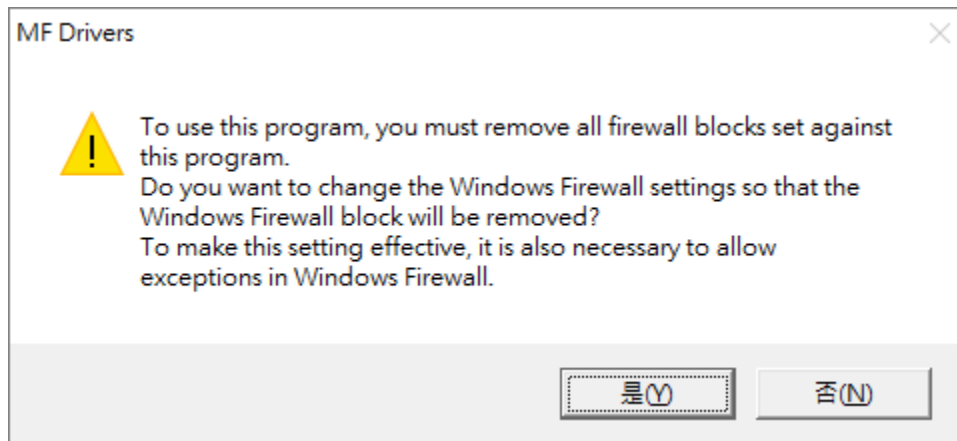
14. 按「Yes」  
Click “Yes”



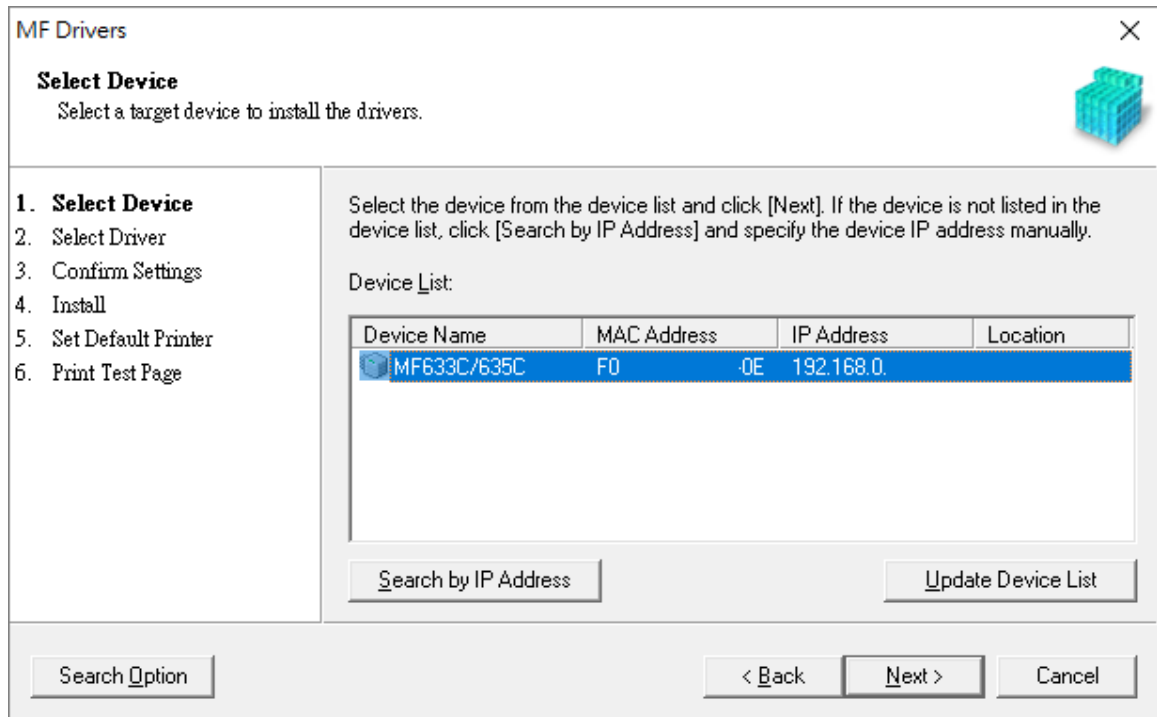
15. 選擇「Network connection (for Network Models)」，按「Next」  
Choose “Network connection (for Network Models)”, click “Next”



16. 按「是」  
Click "Yes"



17. 程式會自動偵測網絡上的印表機，選擇後按「Next」  
Program will automatic detect the network printer, choose printer and click "Next"



18. 按「Next」  
Click “Next”

MF Drivers

**Select Driver**  
Select the drivers to install.

1. Select Device  
**2. Select Driver**  
3. Confirm Settings  
4. Install  
5. Set Default Printer  
6. Print Test Page

Target Device  
MF633C/635C

Driver to Install:

Printer  
 Fax (for Supported Models)  
 Scanner

Canon Driver Information Assist Service  
When you install this service and use shared or local printers, functions that allow you to obtain device information will be added to your computer.

< Back   Next >   Cancel

19. 按「Next」  
Click “Next”

MF Drivers

**Select Driver**  
Select the drivers to install.

1. Select Device  
**2. Select Driver**  
3. Confirm Settings  
4. Install  
5. Set Default Printer  
6. Print Test Page

Target Device  
MF633C/635C

Printer Drivers to Install:

UFR II Printer Driver  
 Generic Plus PCL6 Printer Driver  
 PS3 Printer Driver  
 UFR II V4 Printer Driver

< Back   Next >   Cancel

20. 按「Next」  
Click “Next”

**MF Drivers** ✕

**Confirm Settings**  
Confirm the following setting details.

1. Select Device  
2. Select Driver  
3. **Confirm Settings**  
4. Install  
5. Set Default Printer  
6. Print Test Page

You can change the printer name. If you specify this printer as a shared printer, you can specify the shared printer name and set an additional driver (alternate driver). Confirm the settings, and then click [Next].

**Printer**

Port: CNMFNP\_F0  
Driver: Canon MF633C/635C UFR II  
Printer Name:

Use as Shared Printer

Shared Name:

Current Device: 1  
Number of Devices to Set: 2

21. 按「Next」  
Click “Next”

**MF Drivers** ✕

**Confirm Settings**  
Confirm the following setting details.

1. Select Device  
2. Select Driver  
3. **Confirm Settings**  
4. Install  
5. Set Default Printer  
6. Print Test Page

You can change the fax name. If you specify this fax as a shared fax, you can specify the shared fax name and set an additional driver (alternate driver). Confirm the settings, and then click [Next].

**Fax**

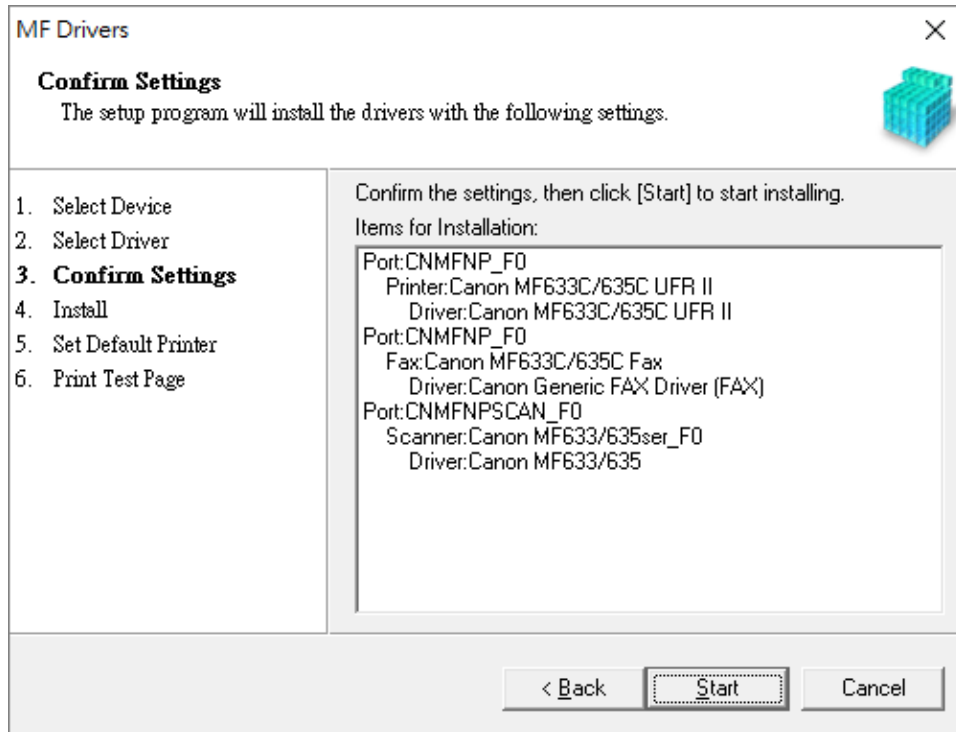
Port: CNMFNP\_F0  
Driver: Canon Generic FAX Driver (FAX)  
Fax Name:

Use as Shared Fax

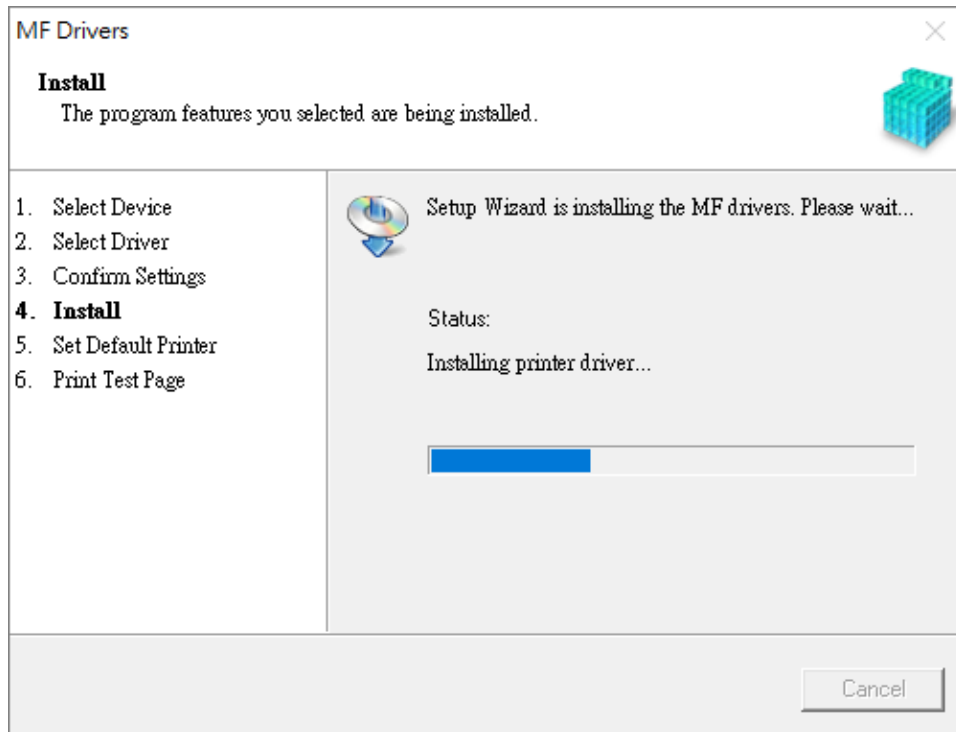
Shared Name:

Current Device: 2  
Number of Devices to Set: 2

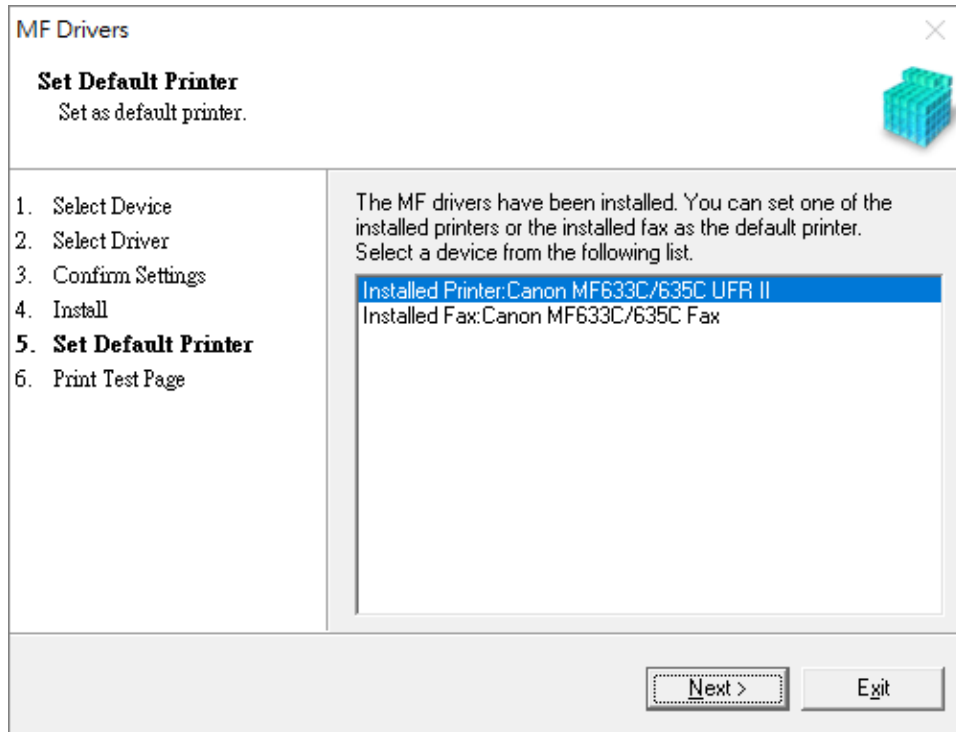
22. 按「Next」  
Click "Next"



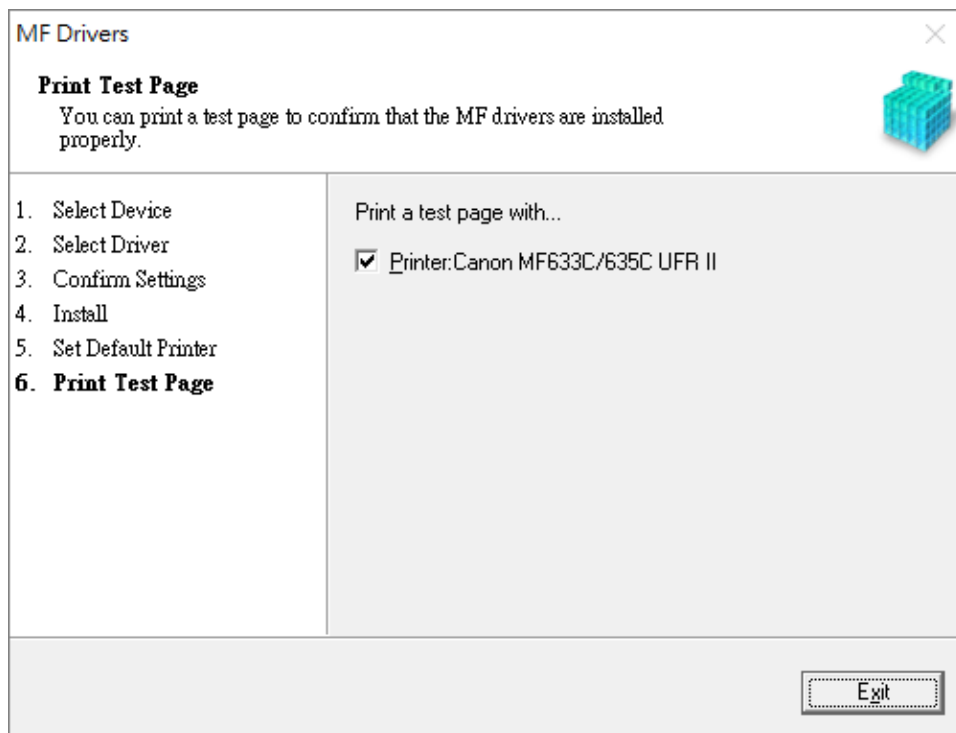
23. 等待安裝程序完成  
Waiting for the installation progress



24. 建議選擇 Canon MF633C/635C UFR II，按「Next」  
Suggest choose Canon MF633C/635C UFR II, click "Next"

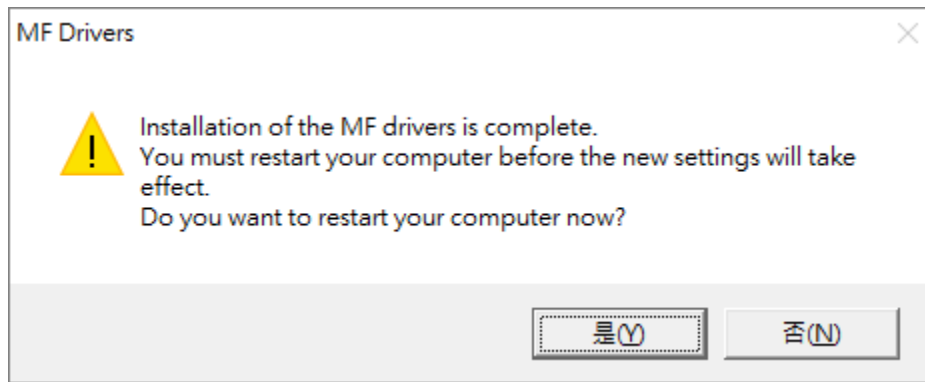


25. 按「Exit」  
Click "Exit"

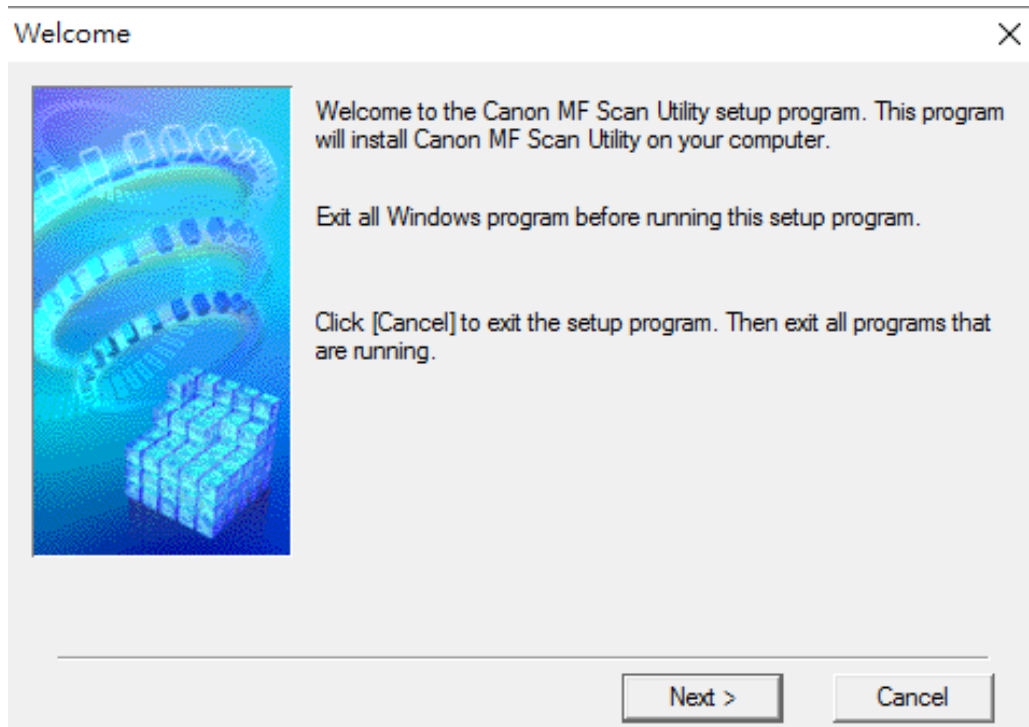




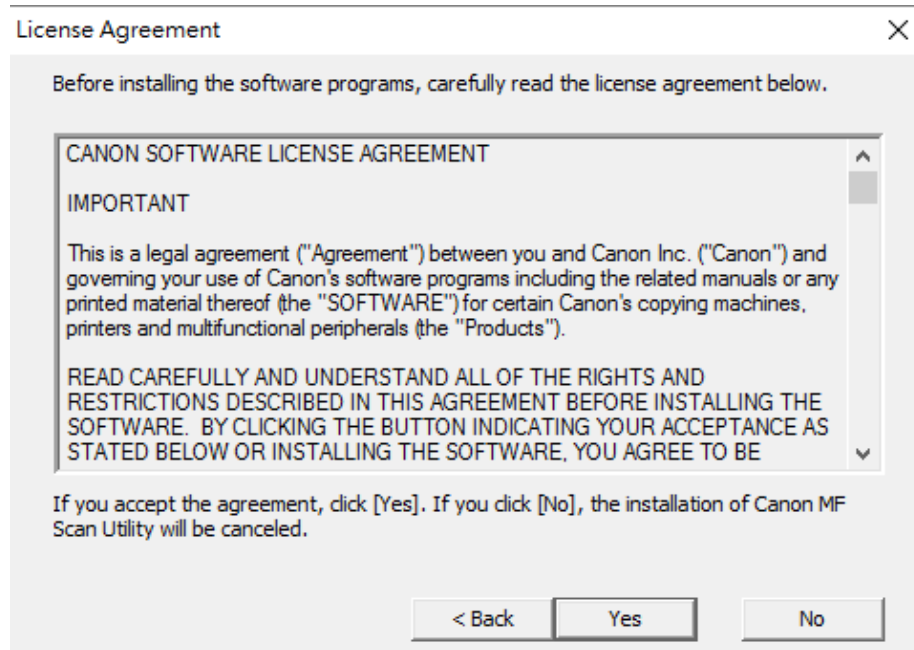
26. 按「是」重啟電腦  
Click "Yes" to restart computer



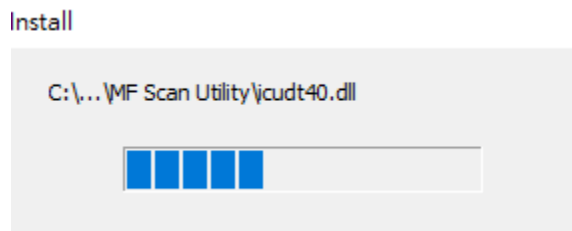
27. 執行檔案〔 MFScanUtility\_XXXXX\_EN.exe 〕按「Next」  
Run the file [MFScanUtility\_XXXXX\_EN.exe] , click "Next"



28. 按「Yes」  
Click "Yes"

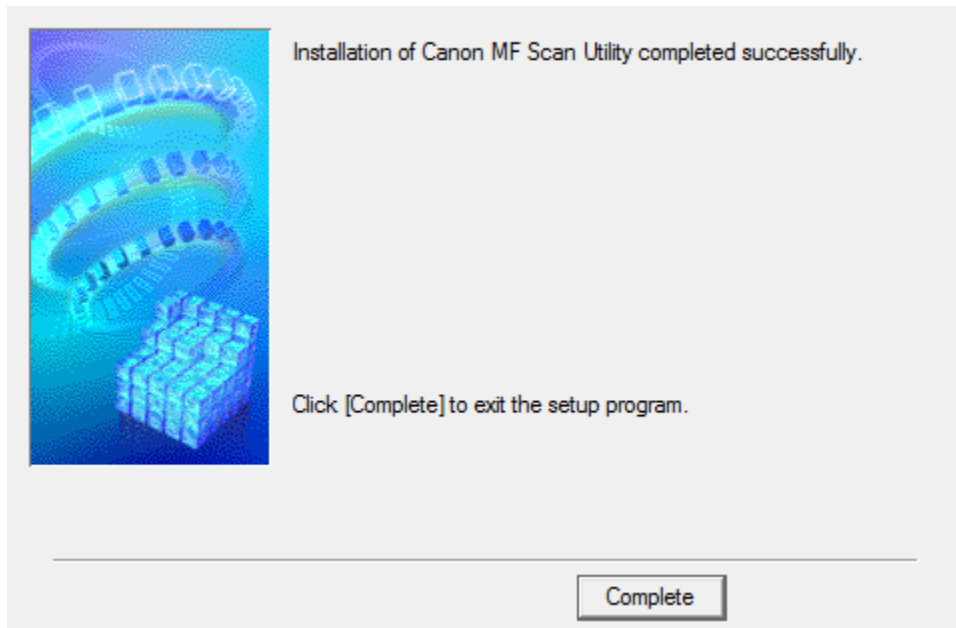


29. 等待安裝程序完成  
Waiting for the installation progress



30. 按「Complete」完成安裝  
Click "Complete" to finish installation

Installation Complete



-完-  
-End-