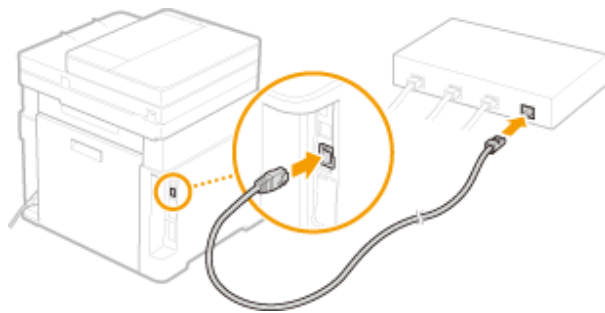


MF635Cx 在 Windows 透過 LAN 連線連接印表機之驅動程式步驟
Driver installation procedure for MF635Cx in Windows (Via Wired LAN)

先將打印機連接到網路，詳細可參考以下步驟

Connect printer to network first, please refer to following procedure

1. 開啟印表機
Turn on the printer
2. 在主畫面中點選「功能表」
Tap “Menu” in the Home Screen
3. 點選「參數選擇」，再點選「網路」
Tap “Preferences”, then tap “Network Settings”
4. 點選「有線 / 無線區域網路」
Tap “Select Wired / Wireless LAN”
5. 點選 <有線區域網路>
Tap “Wired LAN”
6. 使用區域網路纜線將本機連接到路由器
推入接頭，直至聽到喀嗒聲
Connect the machine to router by using a LAN cable, push the connector in until it clicks into place



等待約 2 分鐘，直到本機的 IP 位址設定完成

Wait approximately 2 minutes until IP address settings of the machine complete

下載及安裝步驟

Driver download and installation procedure

7. 到佳能網站 <http://support-hk.canon-asia.com/>，選擇相關的印表機型號及下載印表機的驅動程式

Go to: <http://support-hk.canon-asia.com/>, select related printer model, then download the printer driver

SUPPORT & DOWNLOAD

Select your product from the menus below:

1. Choose a product category

Laser Printers

2. Choose a product series

ImageCLASS

3. Choose a product model

imageCLASS MF635Cx

4. Choose type of document

Drivers & Softwares

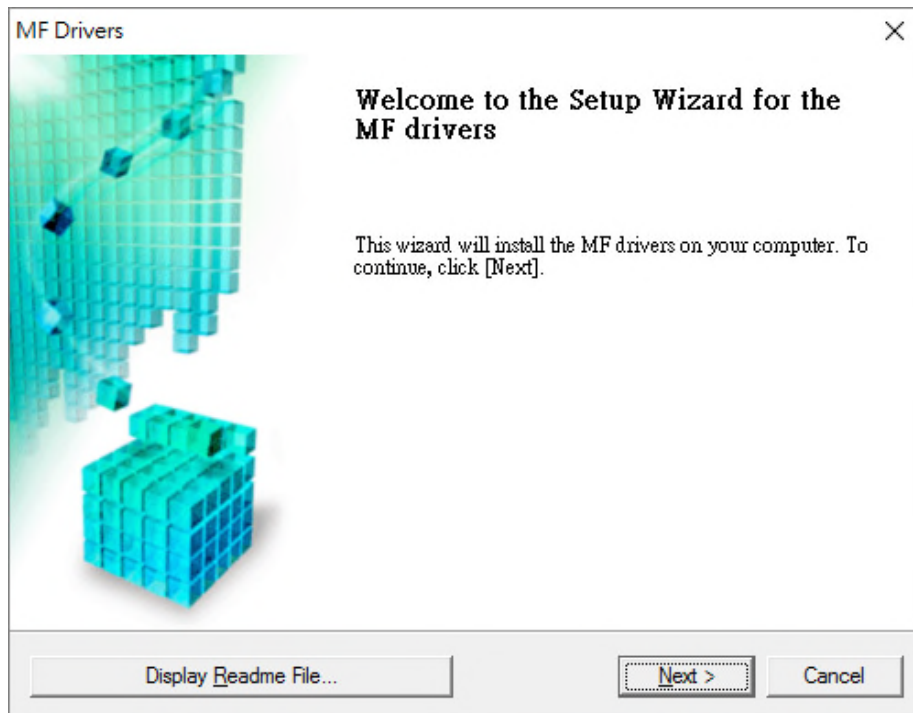
8. 選擇並下載以下檔案

Choose and download below files:

- 打印機驅動程式 [MF633CMFDriverXXXXXX.exe]
Printer Driver [MF633CMFDriverXXXXXX.exe]
- 掃描器驅動程式 [MFScanUtility_XXXXX_EN.exe]
Scanner Driver [MFScanUtility_XXXXX_EN.exe]

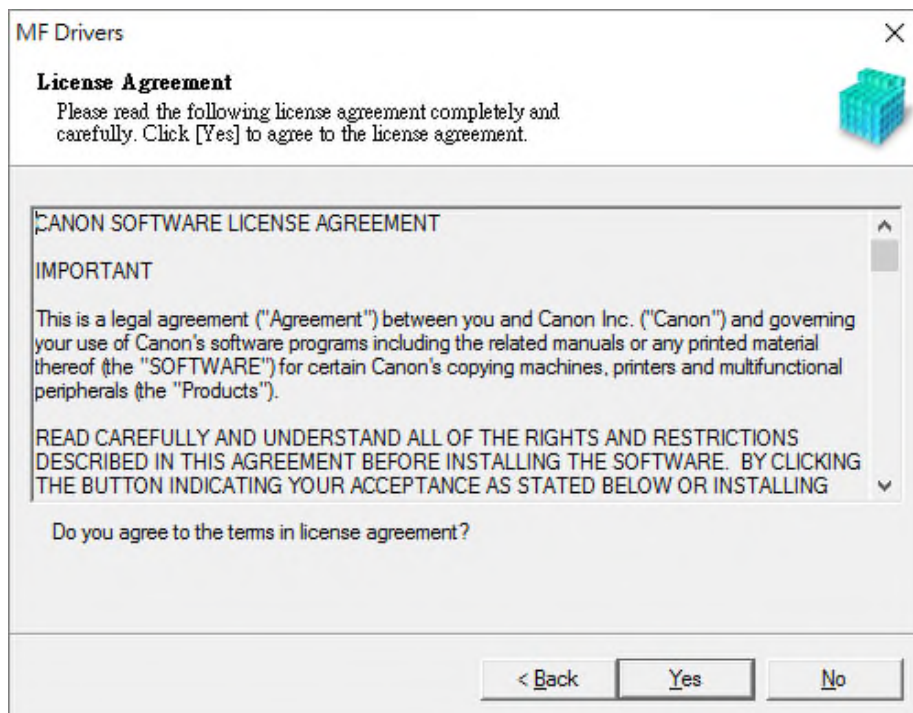
9. 執行檔案〔MF633CMFDriverXXXXXX.exe〕按「Next」

Run File [MF633CMFDriverXXXXXX.exe], click "Next"

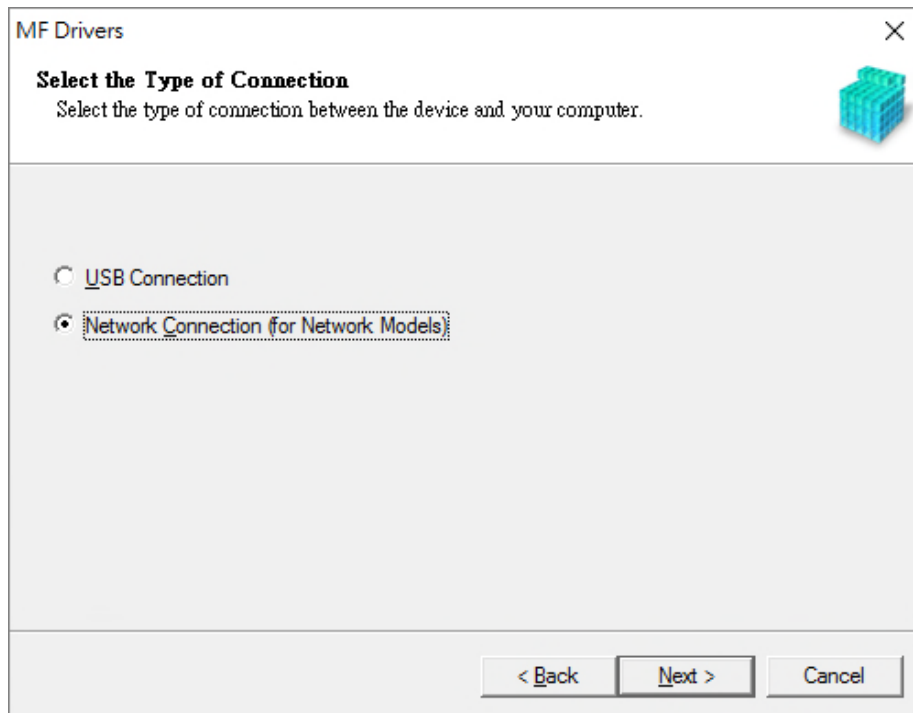


10. 按「Yes」

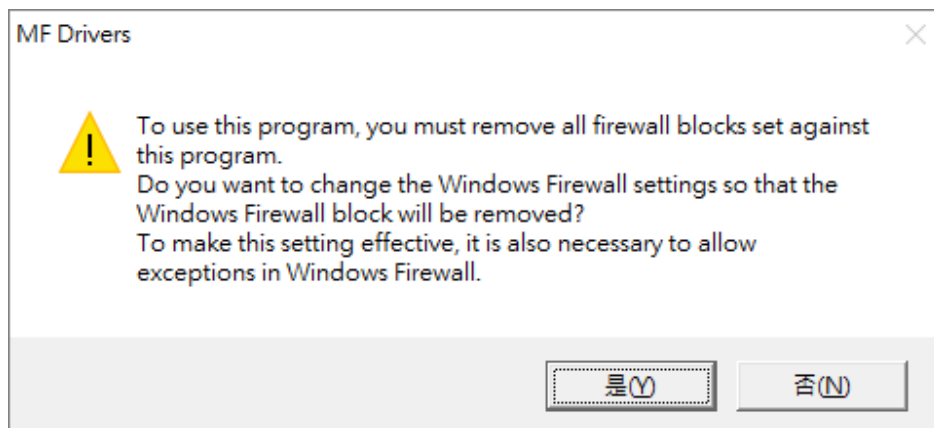
Click "Yes"



11. 選擇「Network connection (for Network Models)」，按「Next」
Choose “Network connection (for Network Models)”, click “Next”

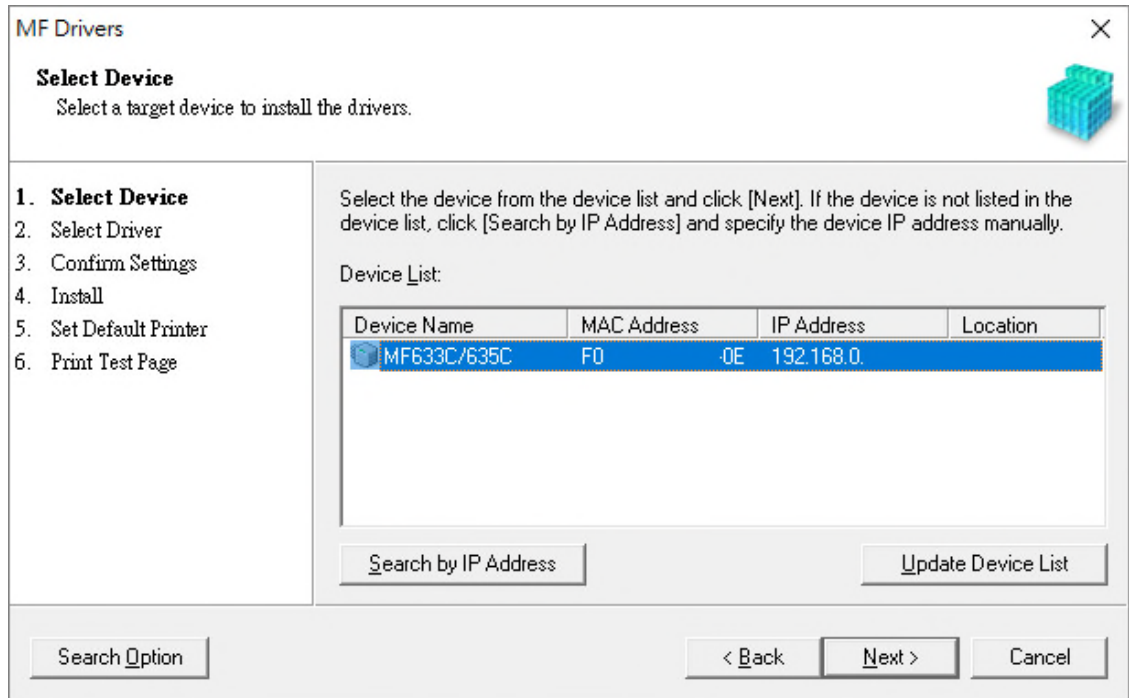


12. 按「是」
Click “Yes”



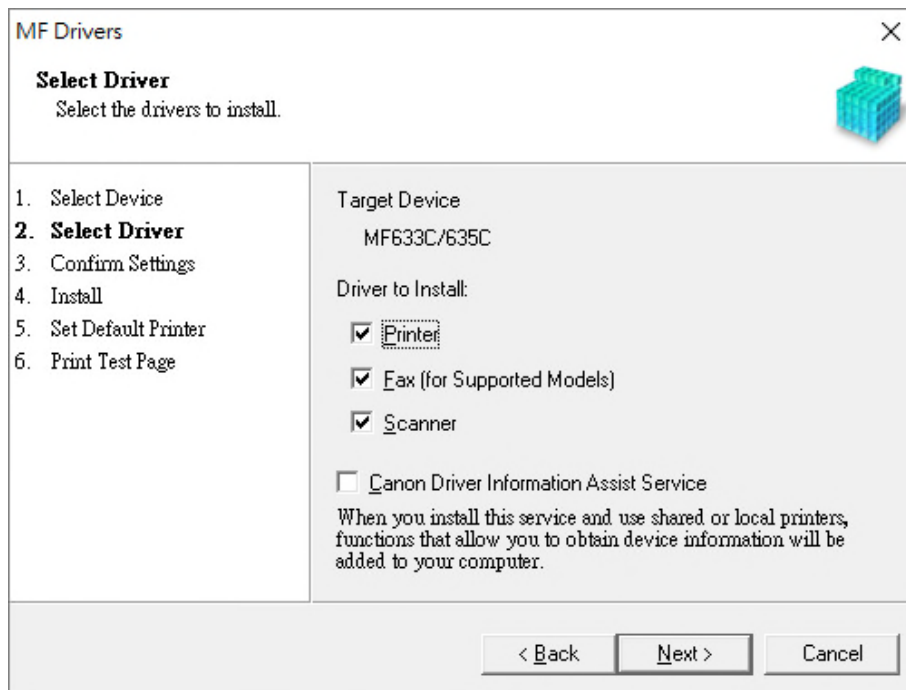
13. 程式會自動偵測網絡上的印表機，選擇後按「Next」

Program will automatic detect the network printer, choose printer and click “Next”



14. 按「Next」

Click “Next”



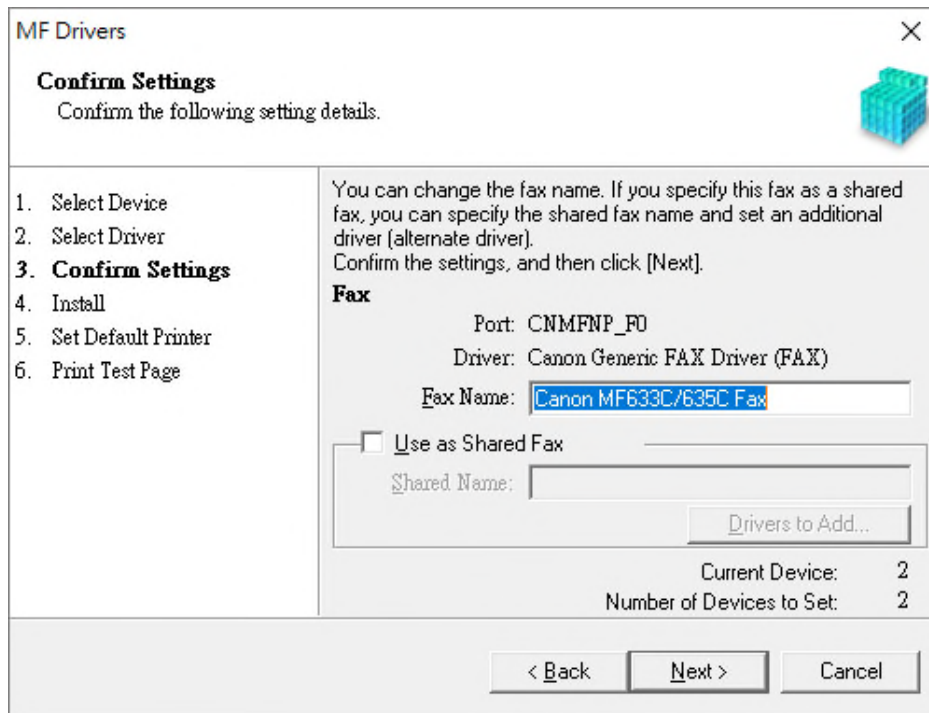
15. 按「Next」
Click “Next”

The screenshot shows the 'MF Drivers' dialog box in the 'Select Driver' step. The title bar reads 'MF Drivers' with a close button (X) and a printer icon. The main heading is 'Select Driver' with the instruction 'Select the drivers to install.' On the left, a progress list shows: 1. Select Device, 2. **Select Driver**, 3. Confirm Settings, 4. Install, 5. Set Default Printer, and 6. Print Test Page. The right pane is titled 'Target Device' and shows 'MF633C/635C'. Below it, 'Printer Drivers to Install:' lists four options: UFR II Printer Driver, Generic Plus PCL6 Printer Driver, PS3 Printer Driver, and UFR II V4 Printer Driver. At the bottom are buttons for '< Back', 'Next >', and 'Cancel'.

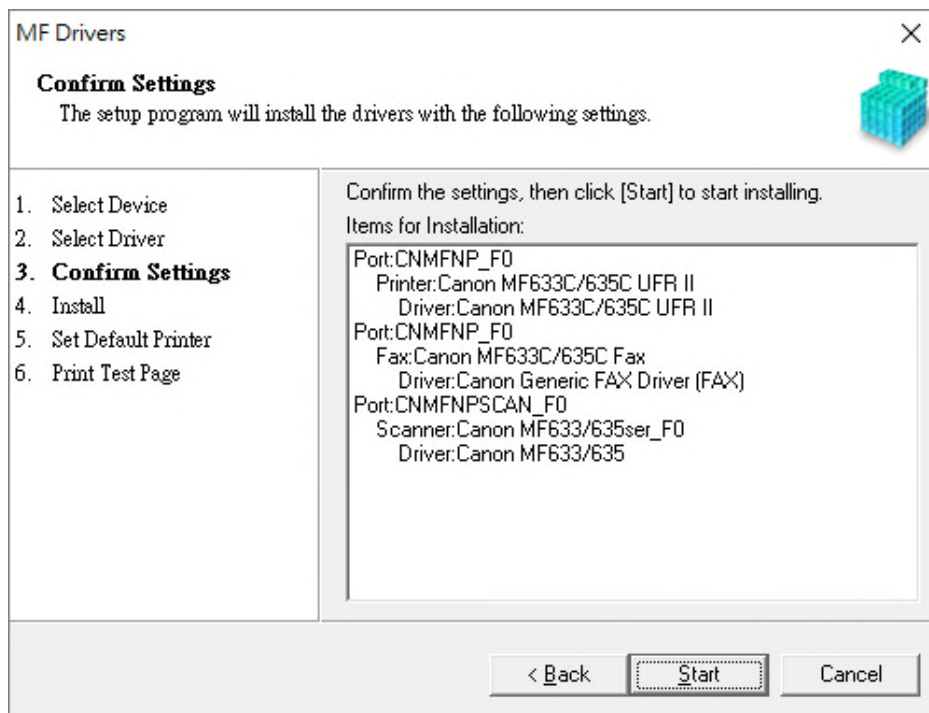
16. 按「Next」
Click “Next”

The screenshot shows the 'MF Drivers' dialog box in the 'Confirm Settings' step. The title bar reads 'MF Drivers' with a close button (X) and a printer icon. The main heading is 'Confirm Settings' with the instruction 'Confirm the following setting details.' On the left, a progress list shows: 1. Select Device, 2. Select Driver, 3. **Confirm Settings**, 4. Install, 5. Set Default Printer, and 6. Print Test Page. The right pane contains a message: 'You can change the printer name. If you specify this printer as a shared printer, you can specify the shared printer name and set an additional driver (alternate driver). Confirm the settings, and then click [Next].' Below this is the 'Printer' section with 'Port: CNMFNP_P0' and 'Driver: Canon MF633C/635C UFR II'. The 'Printer Name:' field contains 'Canon MF633C/635C UFR II'. There is an unchecked checkbox for 'Use as Shared Printer' and a 'Shared Name:' field. A 'Drivers to Add...' button is also present. At the bottom right, it shows 'Current Device: 1' and 'Number of Devices to Set: 2'. At the bottom are buttons for '< Back', 'Next >', and 'Cancel'.

17. 按「Next」
Click “Next”

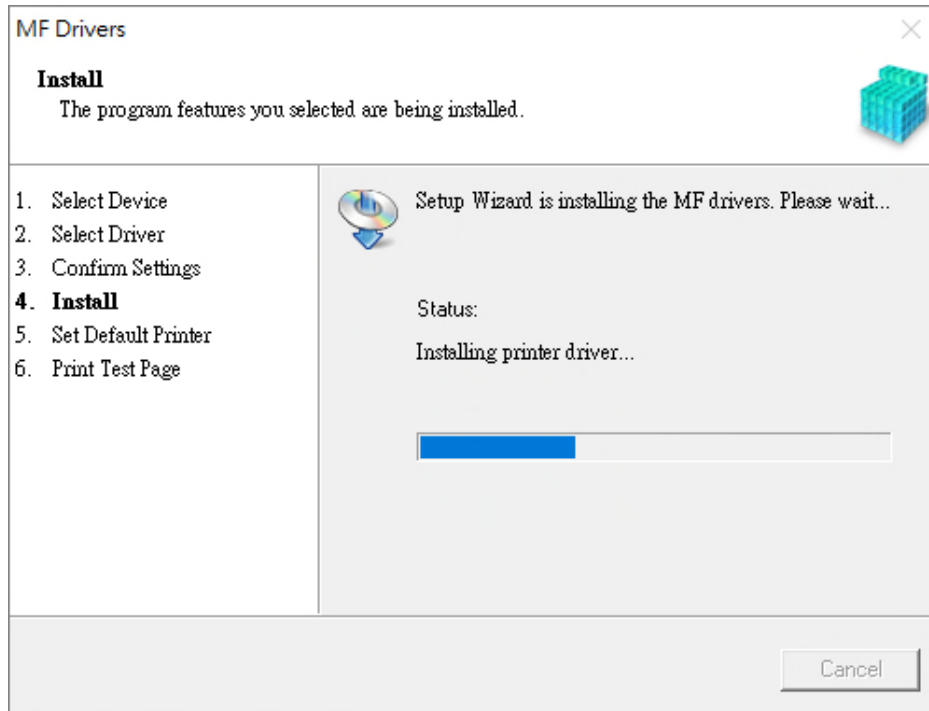


18. 按「Next」
Click “Next”



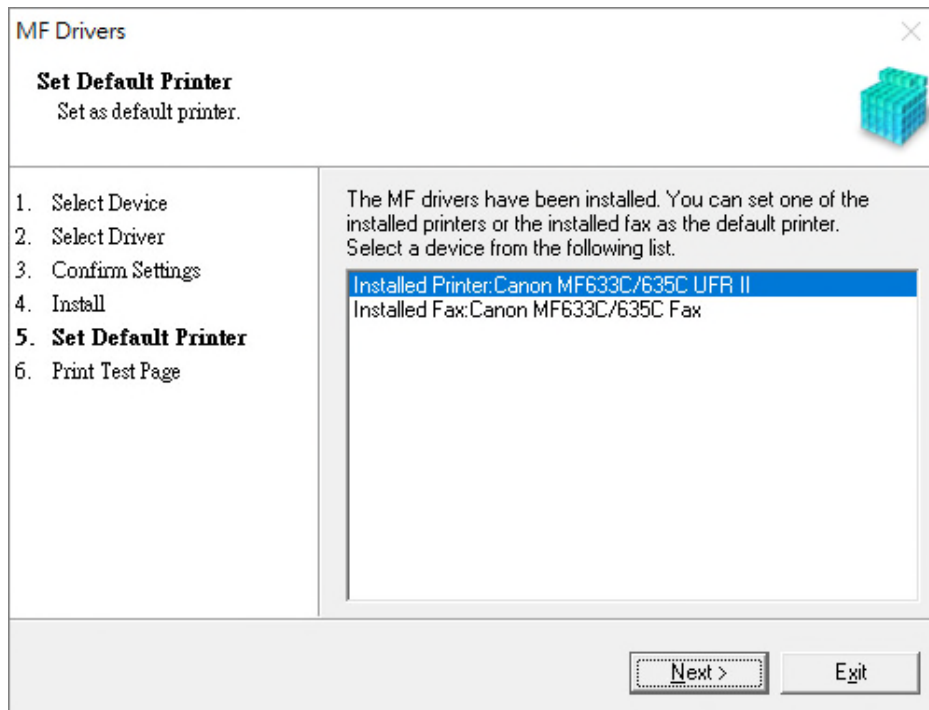
19. 等待安裝程序完成

Waiting for the installation progress

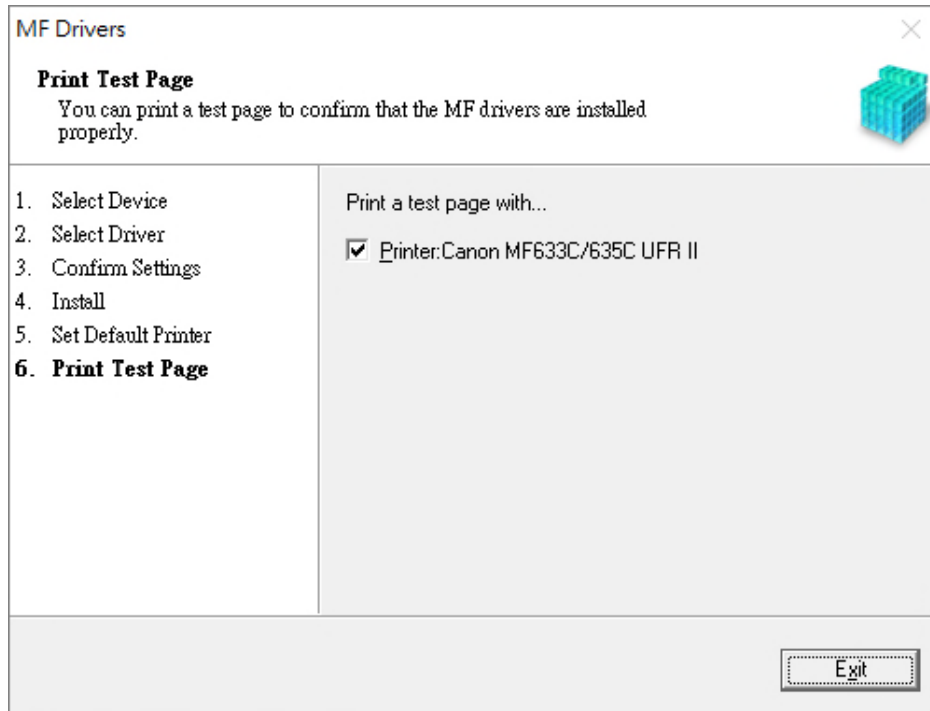


20. 建議選擇 Canon MF633C/635C UFR II，按「Next」

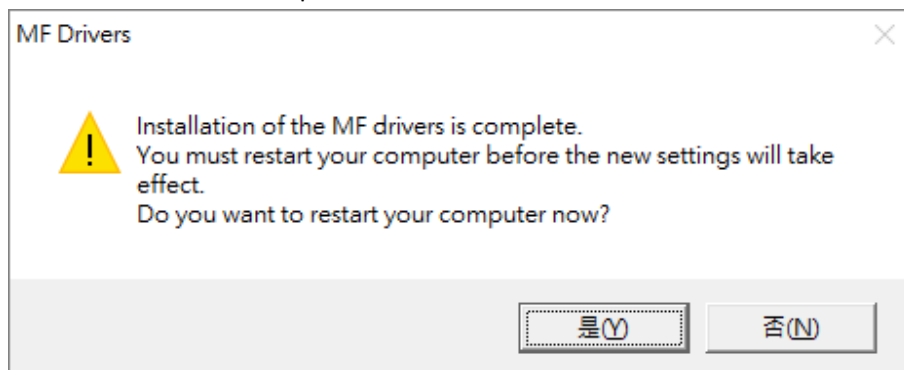
Suggest choose Canon MF633C/635C UFR II, click "Next"



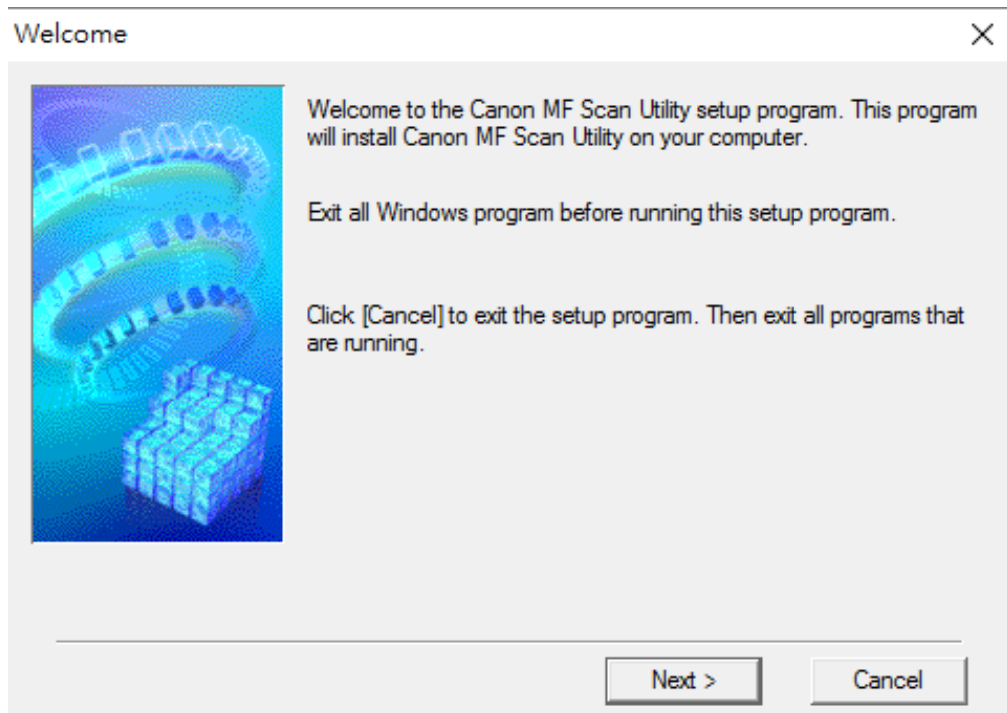
21. 按「Exit」
Click “Exit”



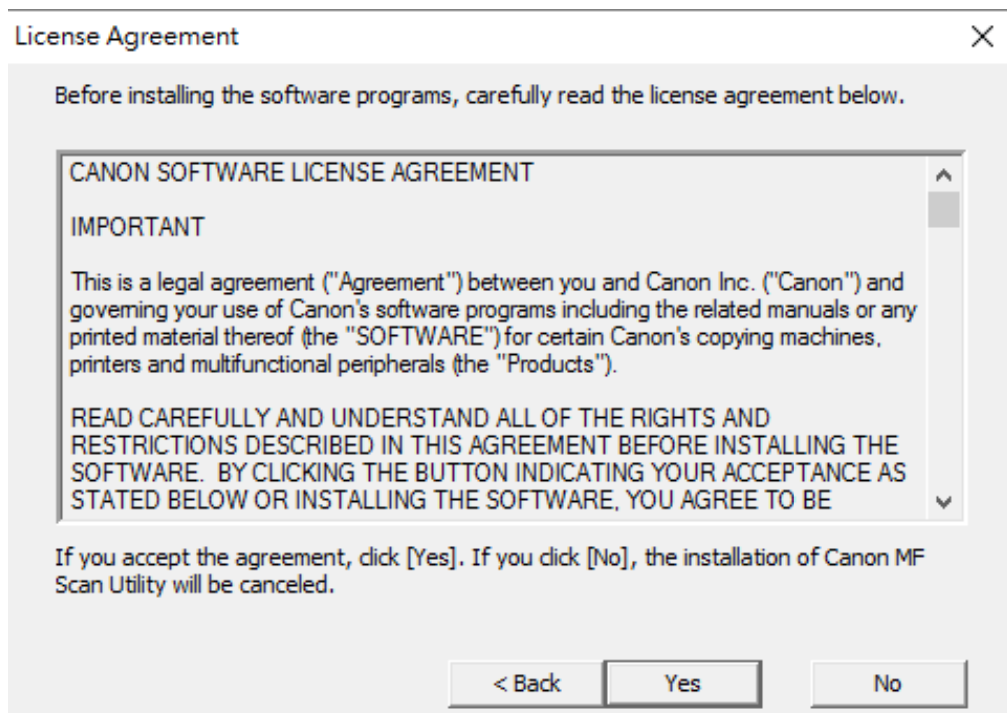
22. 按「是」重啟電腦
Click “Yes” to restart computer



23. 執行檔案〔MFScanUtility_XXXXX_EN.exe〕按「Next」
Run the file [MFScanUtility_XXXXX_EN.exe] , click "Next"



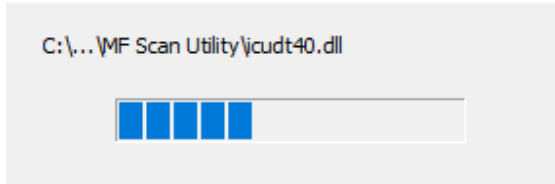
24. 按「Yes」
Click "Yes"



25. 等待安裝程序完成

Waiting for the installation progress

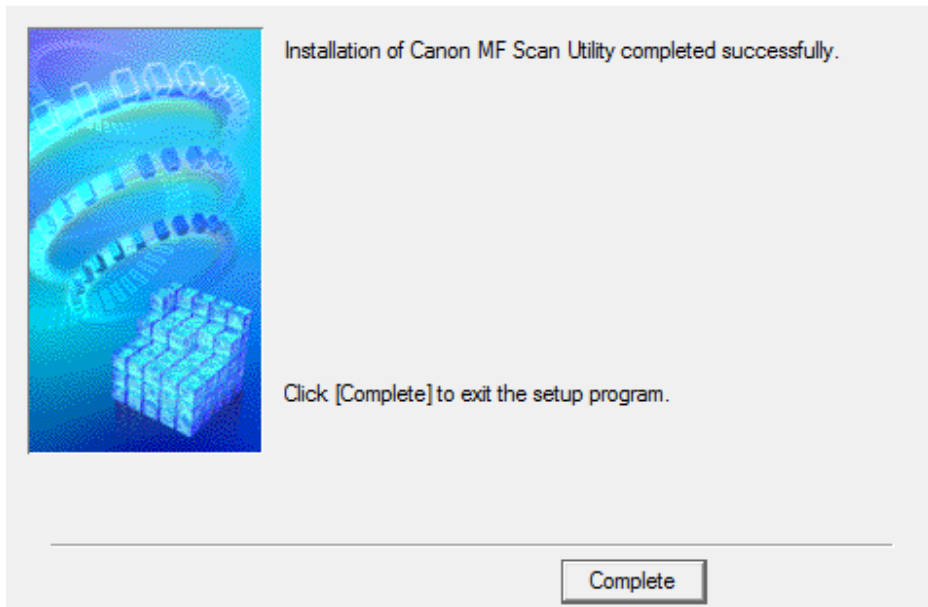
Install



26. 按「Complete」完成安裝

Click "Complete" to finish installation

Installation Complete



-完-
-End-