

## G9 X Mark II - 透過藍牙連接

### G9 X Mark II - Connect via Bluetooth

#### 1. 安裝Camera Connect。

Install Camera Connect.

- 對於Android智能手機，請找Google Play中的Camera Connect，下載並安裝應用程式。

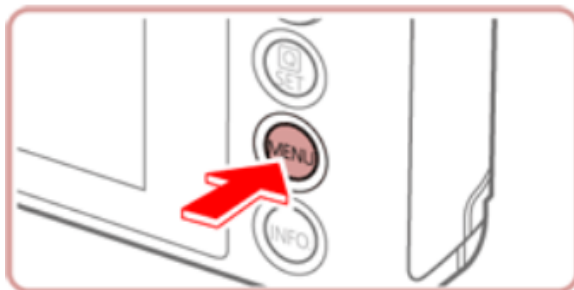
For Android smartphones, find Camera Connect in Google Play and download and install the app.

- 對於iPhone 或 iPad，請找App Store中的Camera Connect，下載並安裝應用程式。

For an iPhone or iPad, find Camera Connect in the App Store and download and install the app.

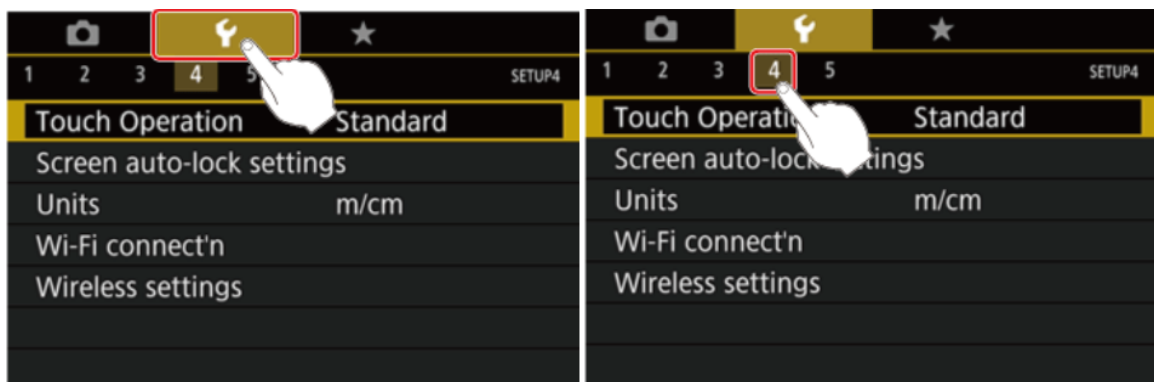
#### 2. 開啟相機電源，並按下[MENU]。

Turn on the camera and press the [MENU] button.

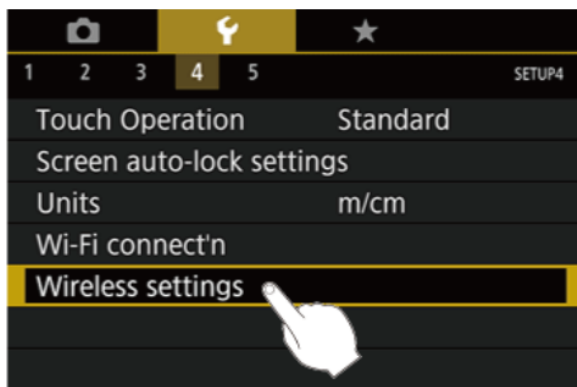


#### 3. 點擊 [🔧]，並選擇 [4]。

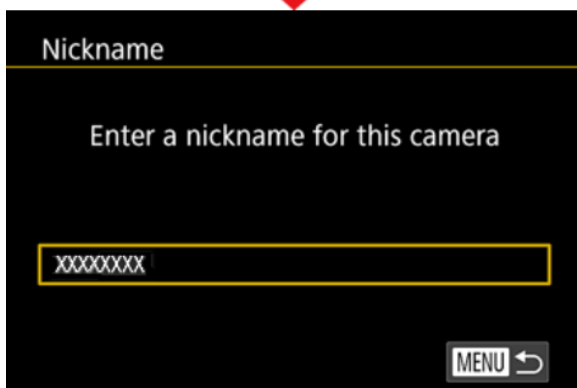
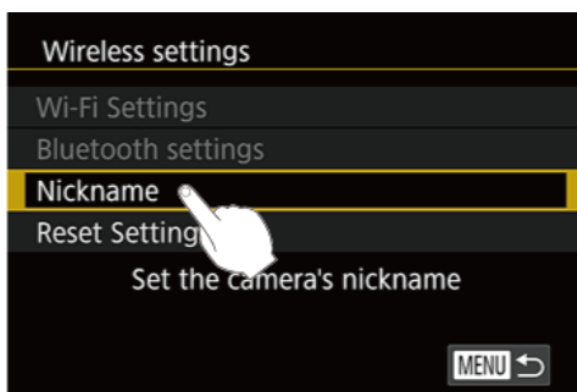
Touch [🔧], and then touch [4].



4. 點擊 [無線通訊設定]，並按下 [SET] 按鈕。  
Touch [Wireless settings], and then press the [SET] button.

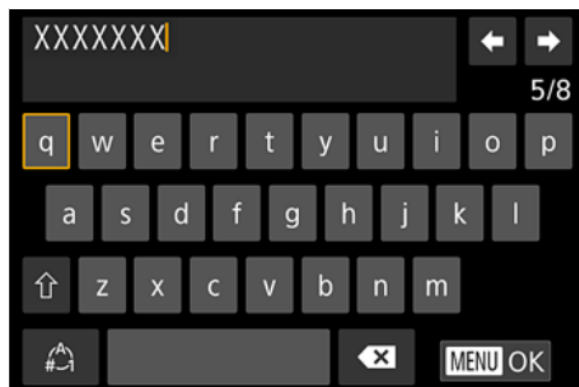


5. 點擊 [略稱]。  
Touch [Nickname].



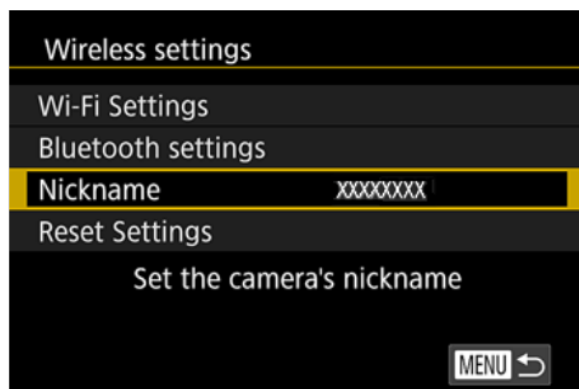
6. 按下 [SET] 按鈕進入鍵盤，然後輸入略稱。

Press the [SET] button to access the keyboard, and then enter a nickname.



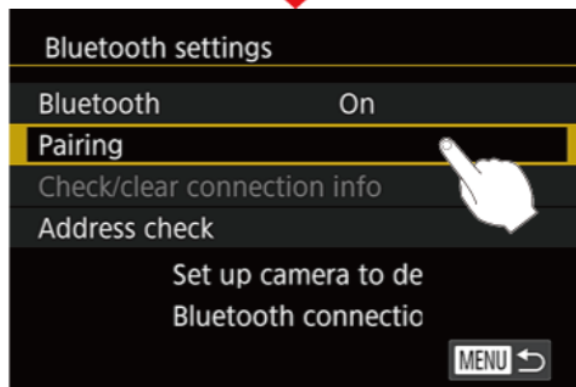
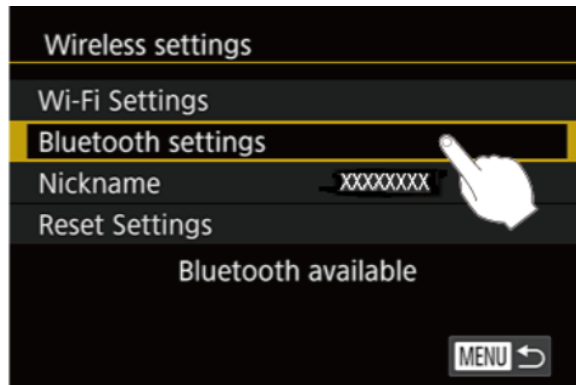
7. 要在按下[MENU]按鈕後返回 [無線通訊設定]，請再按下[MENU]按鈕。

To return to [Wireless settings] after pressing the [MENU] button, press the [MENU] button again.



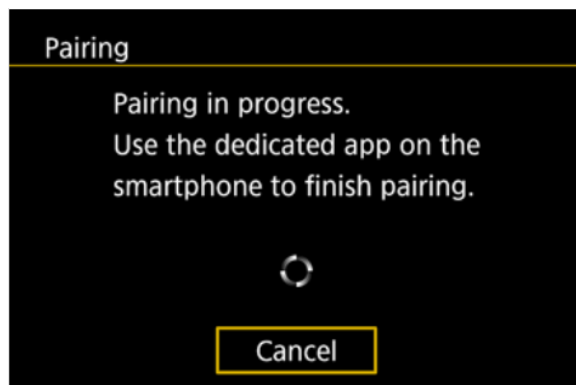
8. 點擊[藍牙設定]，並選擇[配對]，然後按下 [MENU] 按鈕。

Choose [Bluetooth settings] to choose [Pairing], and then press the [MENU] button.



9. 螢幕顯示相機正在等候連接的畫面。

A screen is displayed indicating that the camera is waiting to connect.



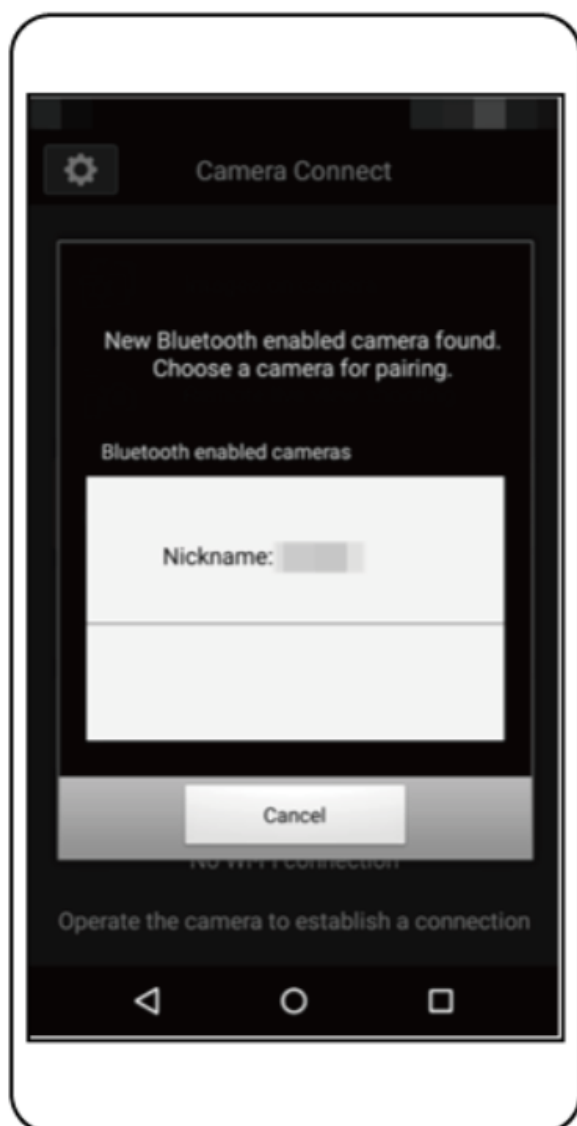
10. 在智能手機上啟動藍牙和Camera Connect。

Activate Bluetooth on the smartphone, and then start Camera Connect on the smartphone.



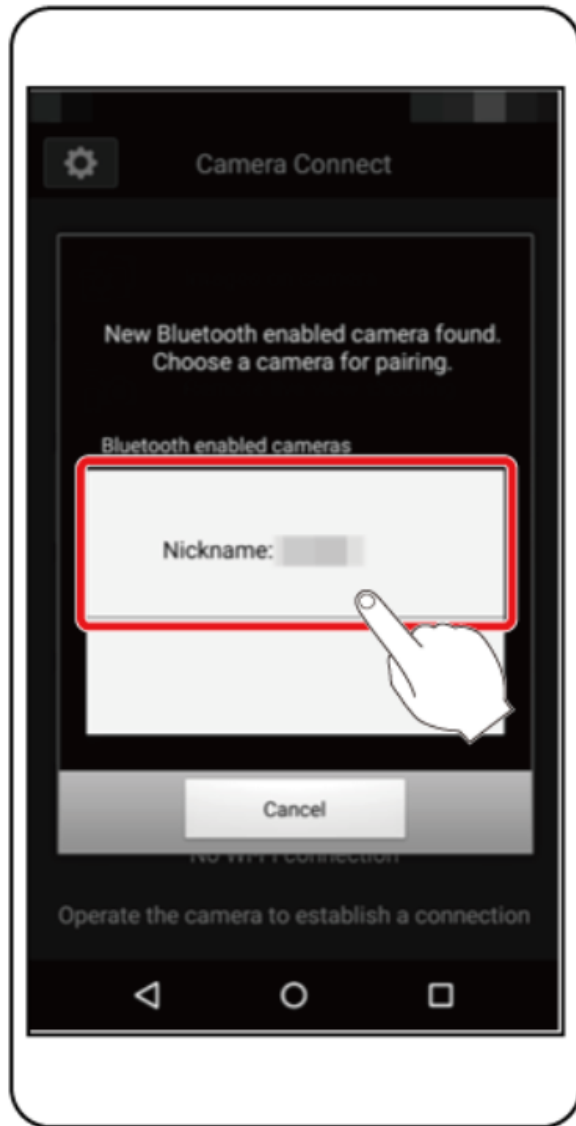
11. 識別出相機後，會顯示相機選擇畫。

After the camera is recognised, a camera selection screen is displayed.



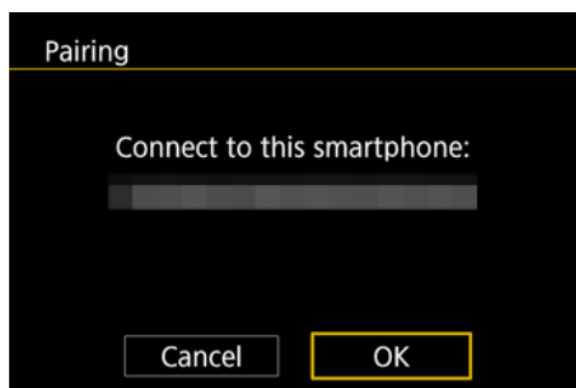
12. 選擇相機略稱，並完成智能手機配對。

Choose the camera nickname and complete the pairing process for the smartphone.



13. 相機上顯示確認訊息後，點擊[確定]。

Choose [OK] after the confirmation message appears on the camera.



14. 顯示下方螢幕時點擊[確定]。

Press the [OK] button when the screen below is displayed.



-完-

-End-