

透過 USB 連接安裝 MF249dw 印表機的驅動程式步驟 (以 Win 10 作示範)

**MF249dw printer driver Installation Guide for Windows via USB connection (Win 10 as example)**

**\*\*注意: 安裝驅動程式前請勿接駁 USB 線，以免系統發生錯誤\*\***

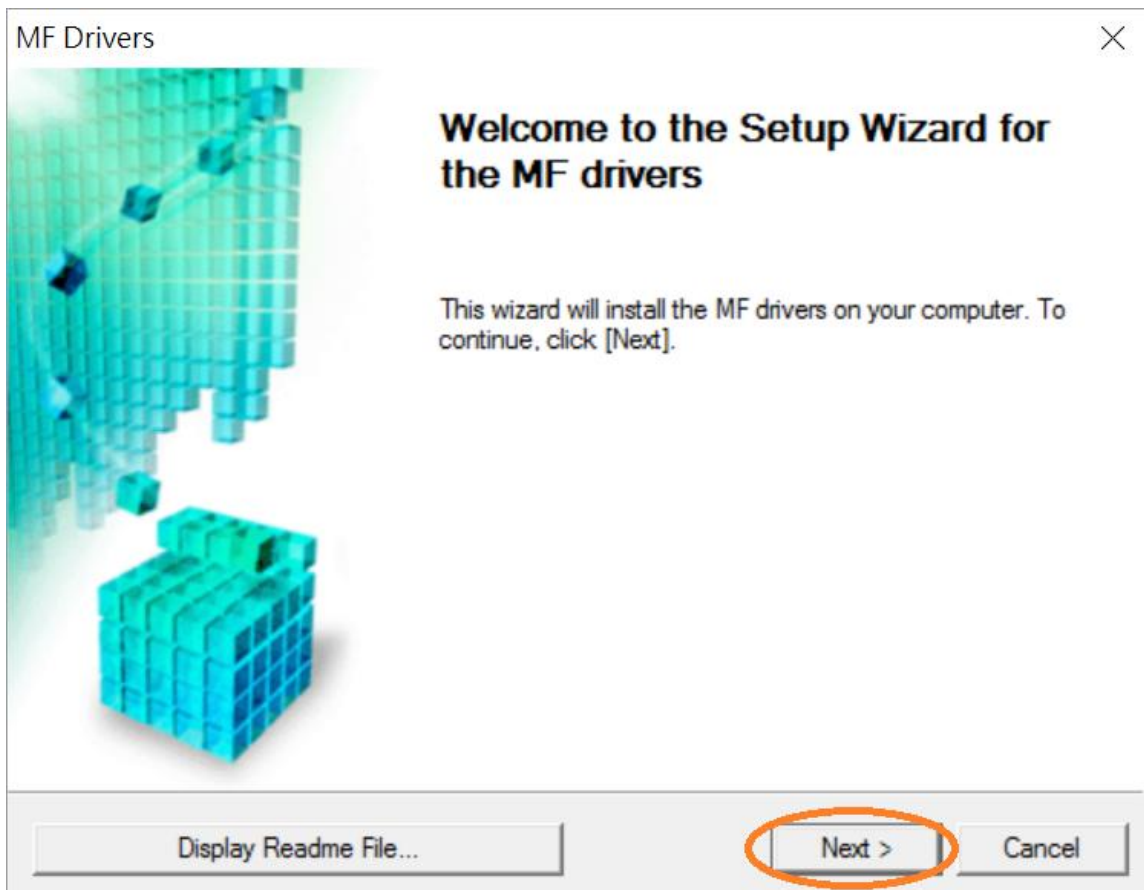
**\*\* Please don't plug the USB cable until the driver asked to do so\*\***

到佳能網站 <https://hk.canon/en/support/imageCLASS%20MF249dw/model>，選擇及下載印表機的驅動程式  
MFDivers (UFR II / PCL / FAX / ScanGear)

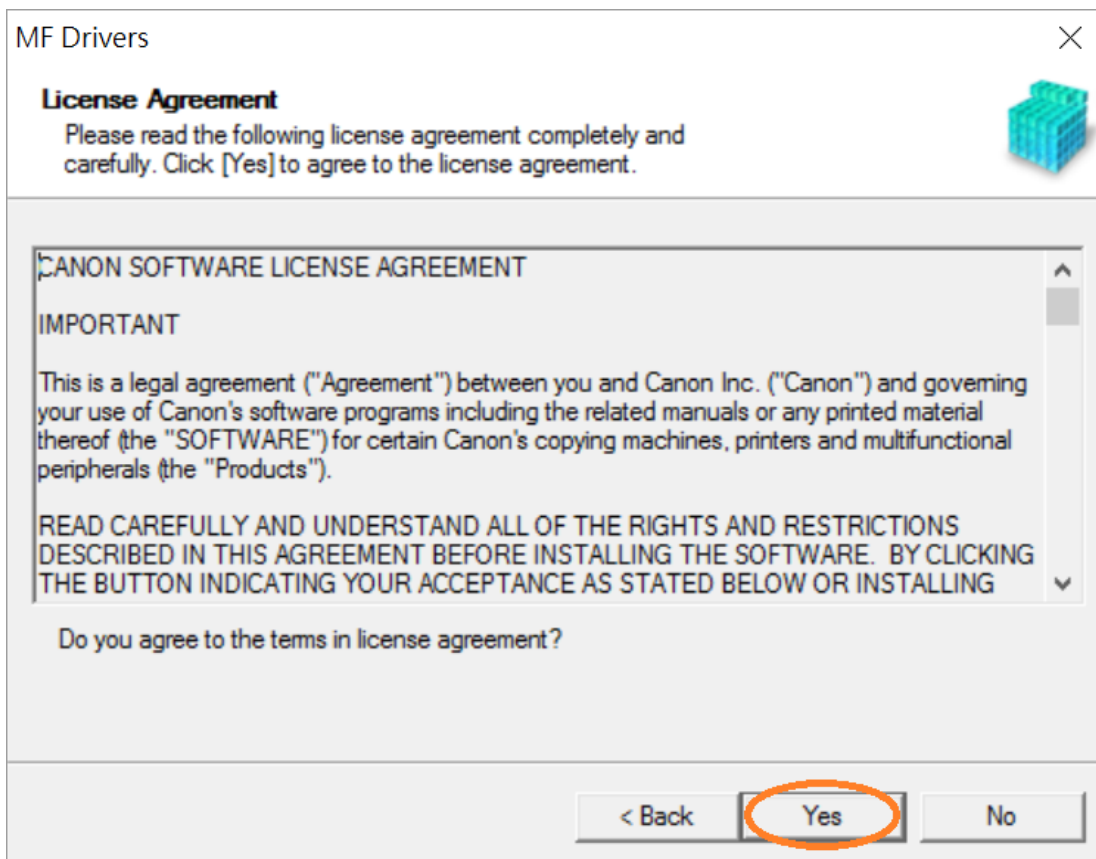
(Go to <https://hk.canon/en/support/imageCLASS%20MF249dw/model>, select and download the printer driver  
MFDivers (UFR II / PCL / FAX / ScanGear))

1. 下載完成後，打開驅動程式 安裝檔案  
Open driver installation file after downloaded

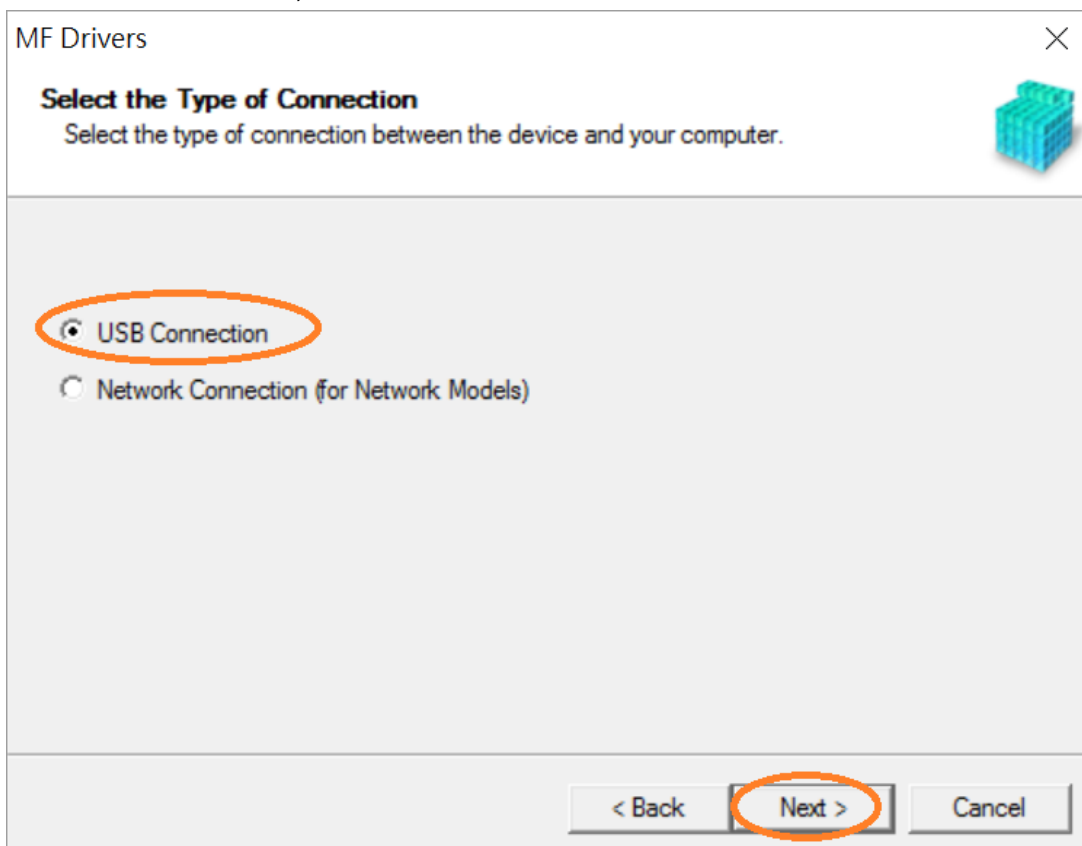
2. 按「Next >」  
Click "Next >"



3. 按「Yes」  
Click "Yes"

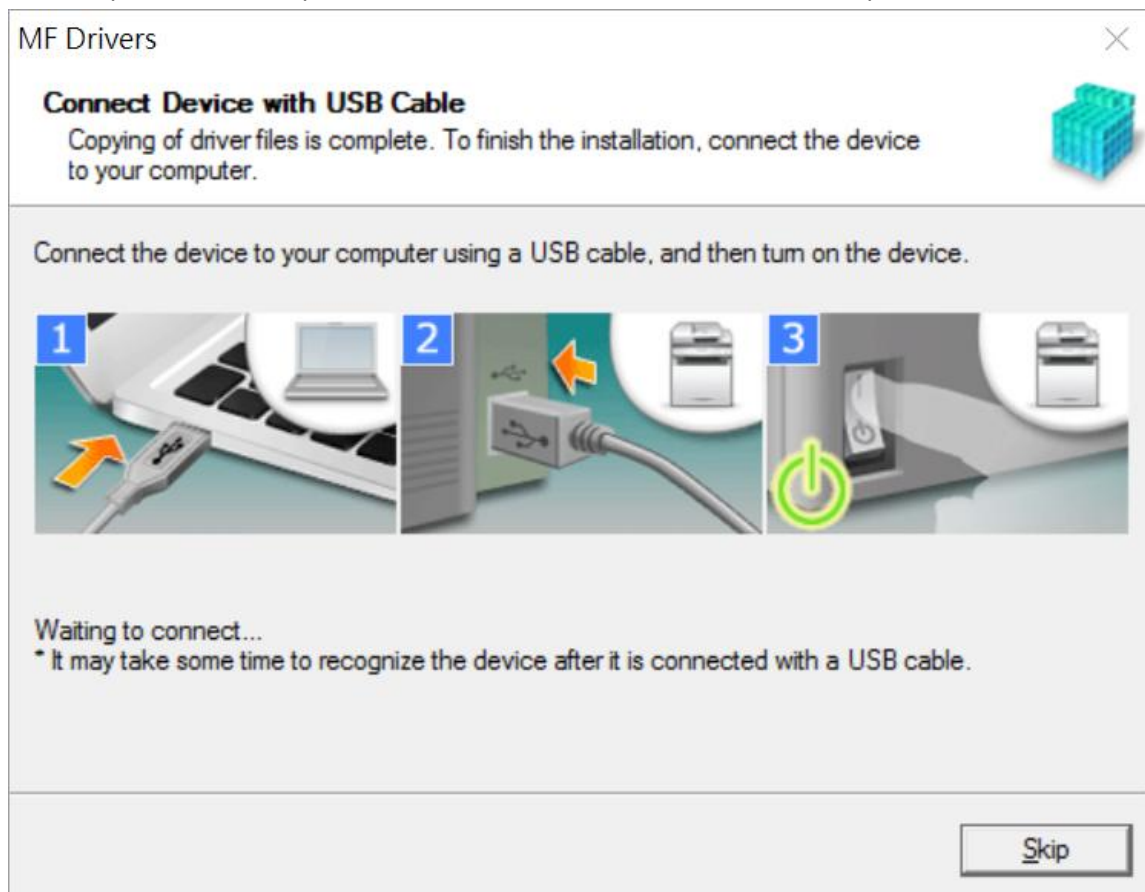


4. 選擇「USB Connection」，按「Next >」  
Select "USB Connection", click "Next >"



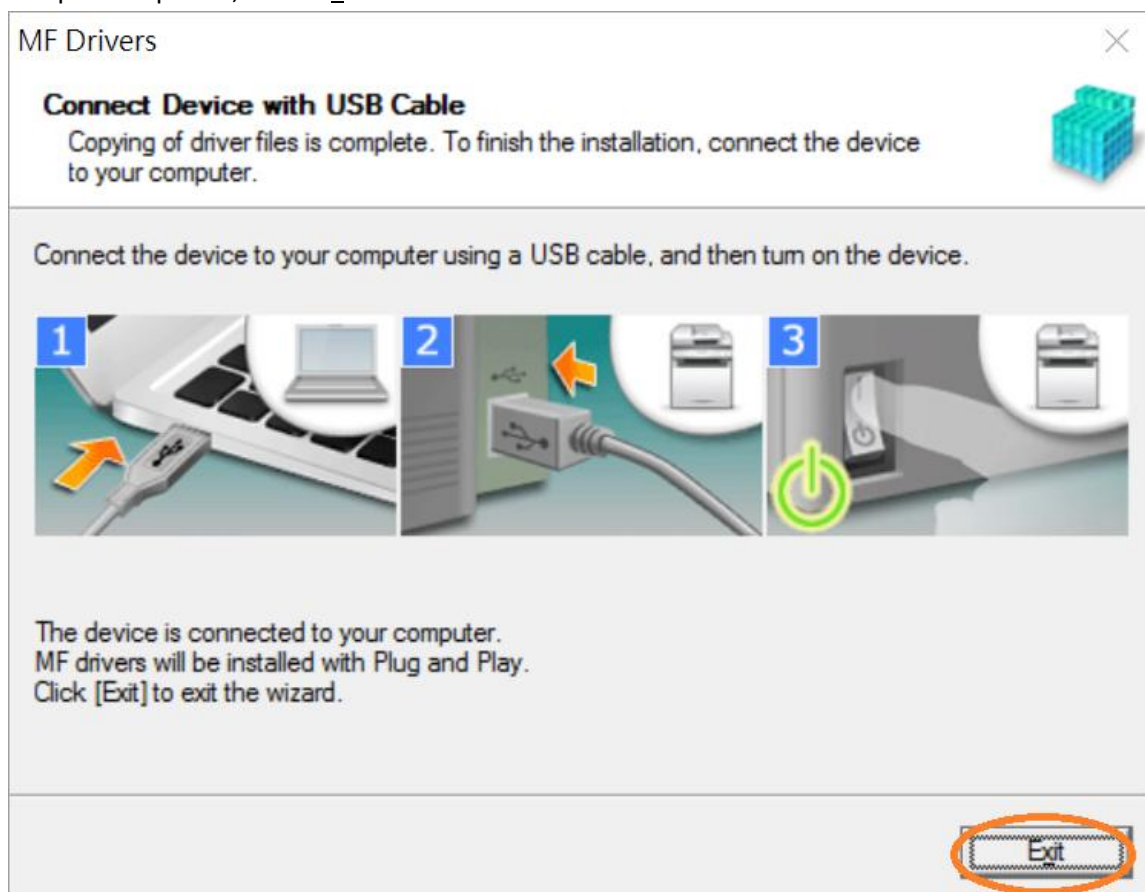
5. 以 USB 線接駁打印機及電腦，然後開啟打印機

Connect printer and computer with the USB cable, and then turn on the printer



6. 安裝完成，按「Exit」

Setup is completed, click "Exit"

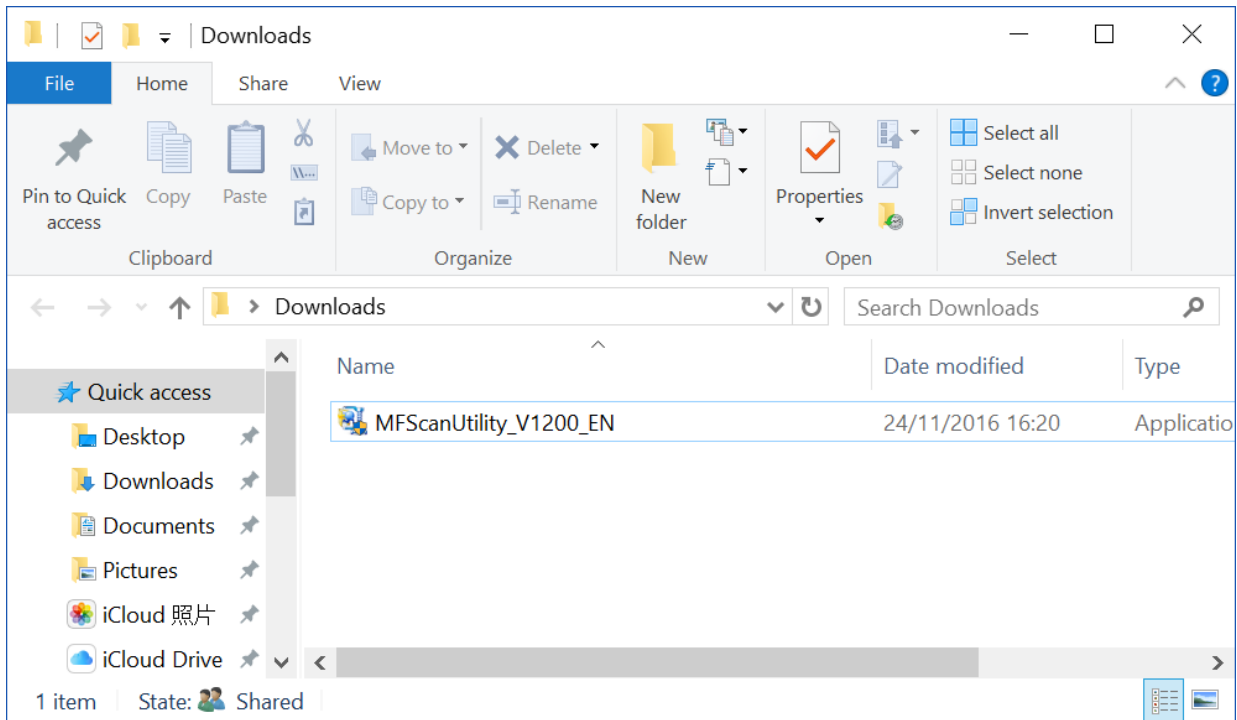


7. 到佳能網站 <https://hk.canon/en/support/imageCLASS%20MF249dw/model>，選擇及下載掃描軟件 MF Scan Utility

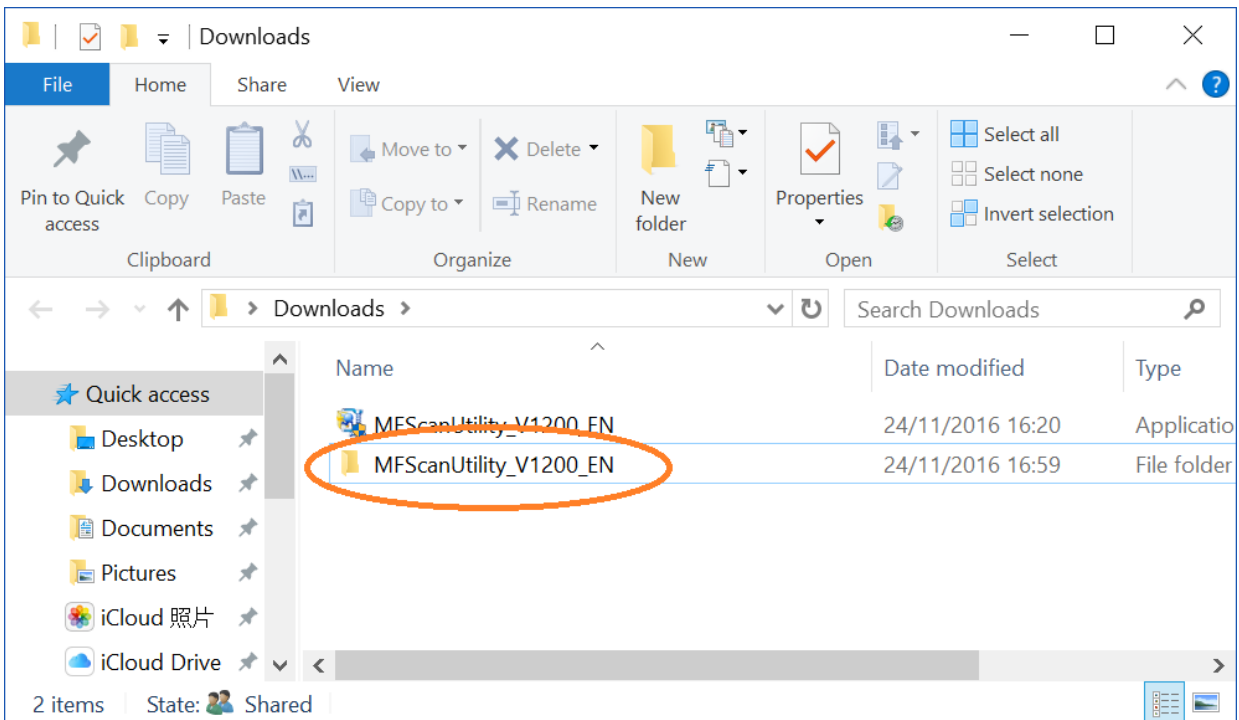
Go to <https://hk.canon/en/support/imageCLASS%20MF249dw/model>, select and download the scanner software MF Scan Utility

8. 下載的文件以自解壓縮檔檔案（.exe 格式）保存在指定的文件夾中

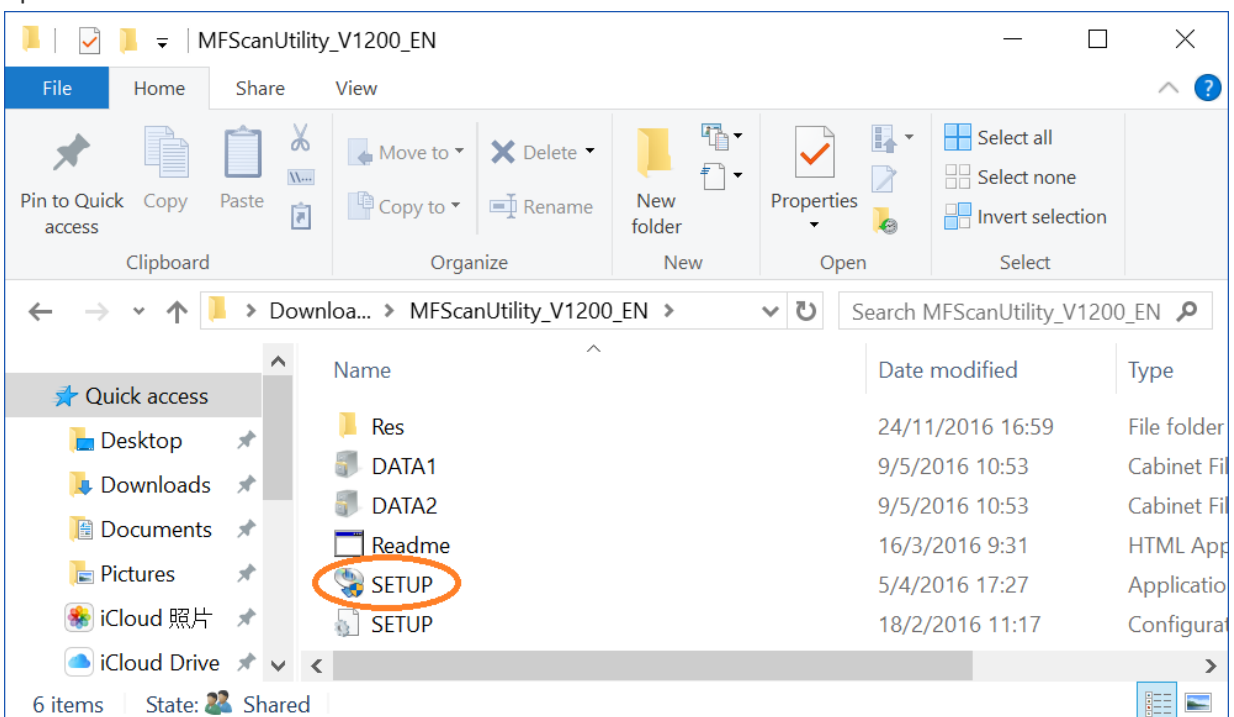
The self extractor file (.exe format) is saved to specified folder



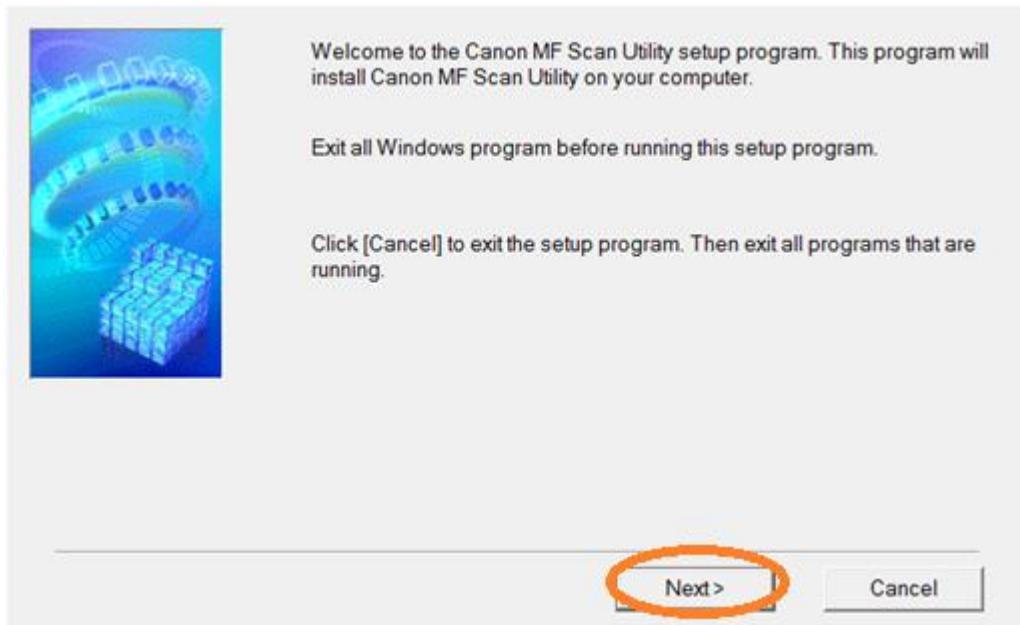
9. 打開「MFScanUtility\_\*\*\*.exe」檔案。將在同一文件夾中創建新文件夾，如打開文件解壓縮時出現「使用者帳戶控制」選項，按「是」，打開「MFScanUtility\_\*\*\*」文件夾  
Open “MFScanUtility\_\*\*\*.exe” file, a new folder will be created. If “User Account Control” window pops up, click “Yes”, open “MFScanUtility\_\*\*\*” file folder



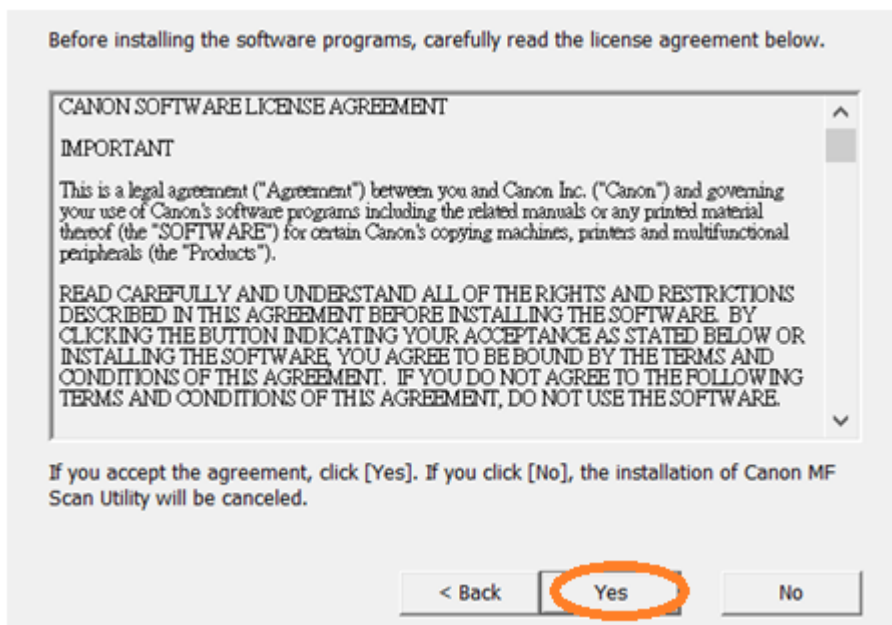
10. 開啓「SETUP.exe」檔案  
Open “SETUP.exe” file



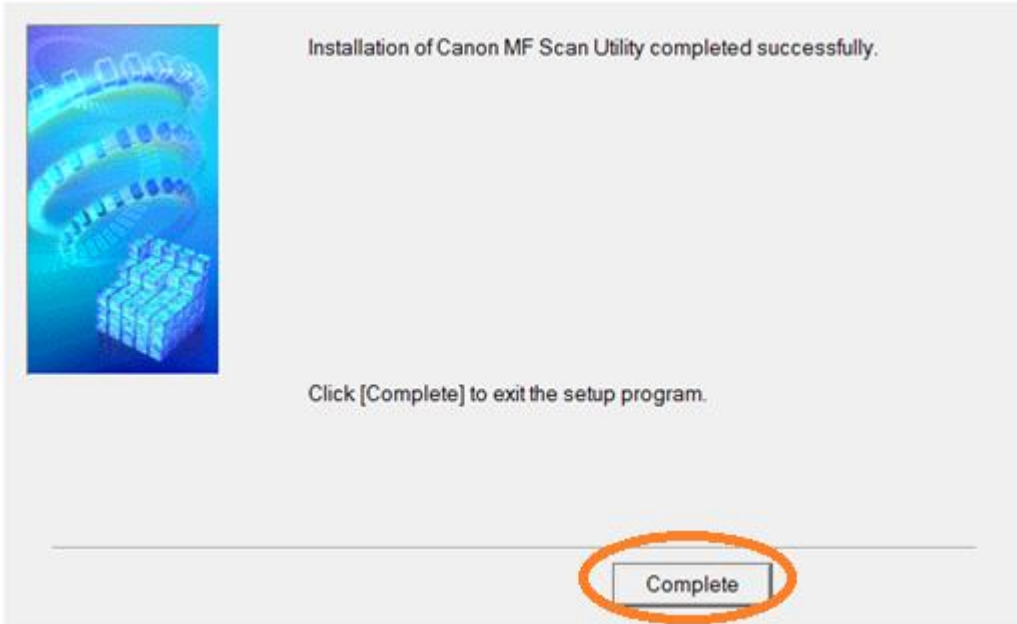
11. 按「Next >」  
Click “Next >”



12. 按「Yes」  
Click “Yes”



13. 按「Complete」  
Click “Complete”



-完-  
-End-