


如何於蘋果電腦上進入維護工作 (以OSX 10.11作示範)  
How to perform maintenance on Macintosh (OSX 10.11 as example)

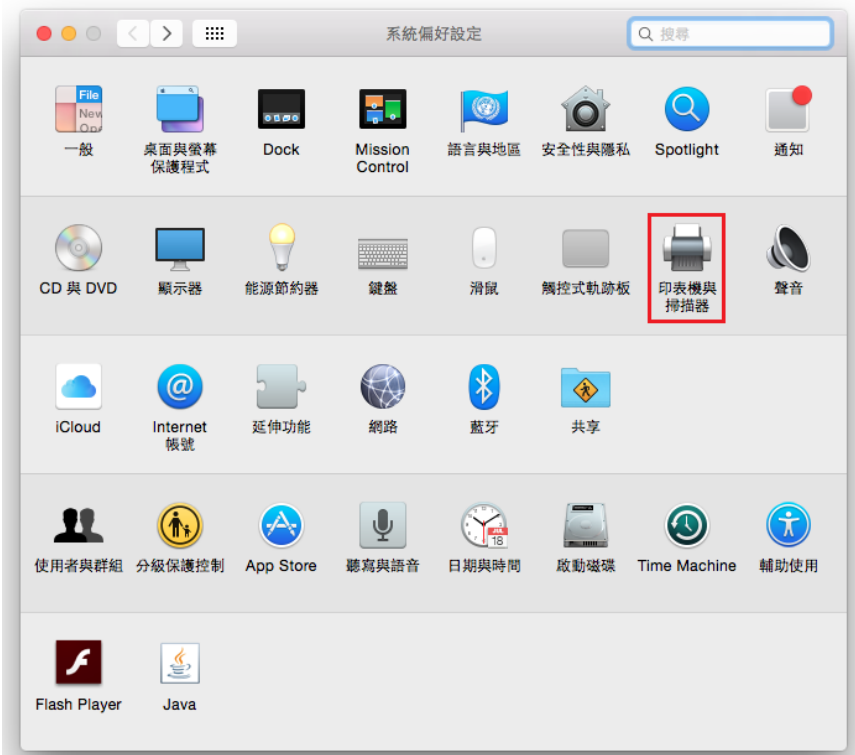
1. 按一下電腦左上方 <  > 圖案，選擇 <系統偏好設定>

Click <  > icon on the top left hand corner of the computer , and then choose <System Preferences>

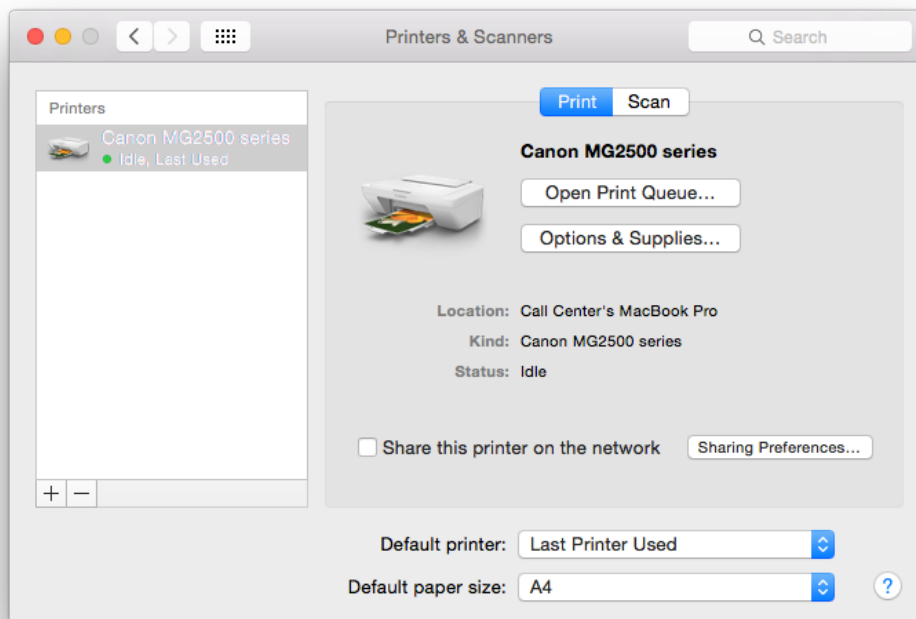


2. 按 <印表機與掃描>

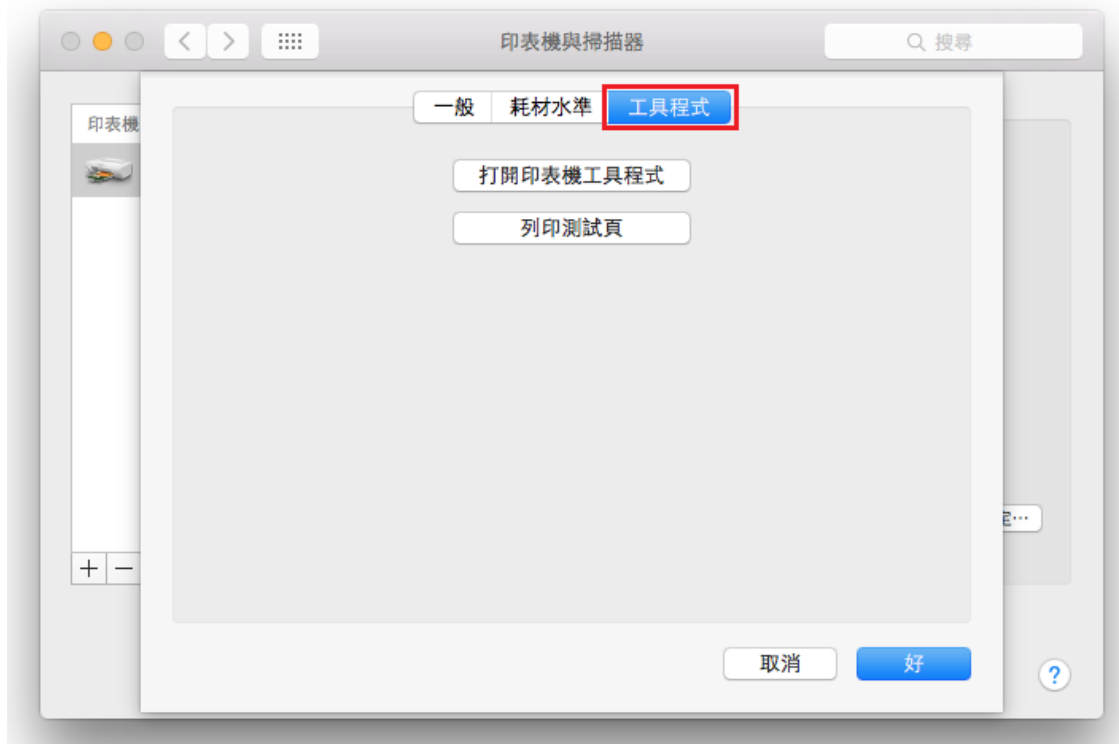
Click <Printer and Scanner>



- 按 <選項與耗材>  
Click <Options & Supplies>



- 按 <工具程式>  
Click <Utility>



5. 按 <打開印表機工具程式>  
Click <Open Printer Utility>



6. 參考以下畫面，左上方可選擇以下選項：

- 清潔
- 測試列印
- 電源設定
- 墨水量資訊
- 墨盒設定
- 靜音設定
- 自訂設定

Refer to the picture below, you can choose the options on the left hand corner

- Cleaning
- Test Page
- Power settings
- Ink Level Information
- Ink Cartridge Settings
- Quiet Settings
- Custom Settings



## 7. 清潔板面

- 清潔
- 深度清潔
- 底板清潔
- 滾軸清潔

### Cleaning Screen

- Cleaning
- Deep Cleaning
- Bottom Plate Cleaning
- Roller Cleaning

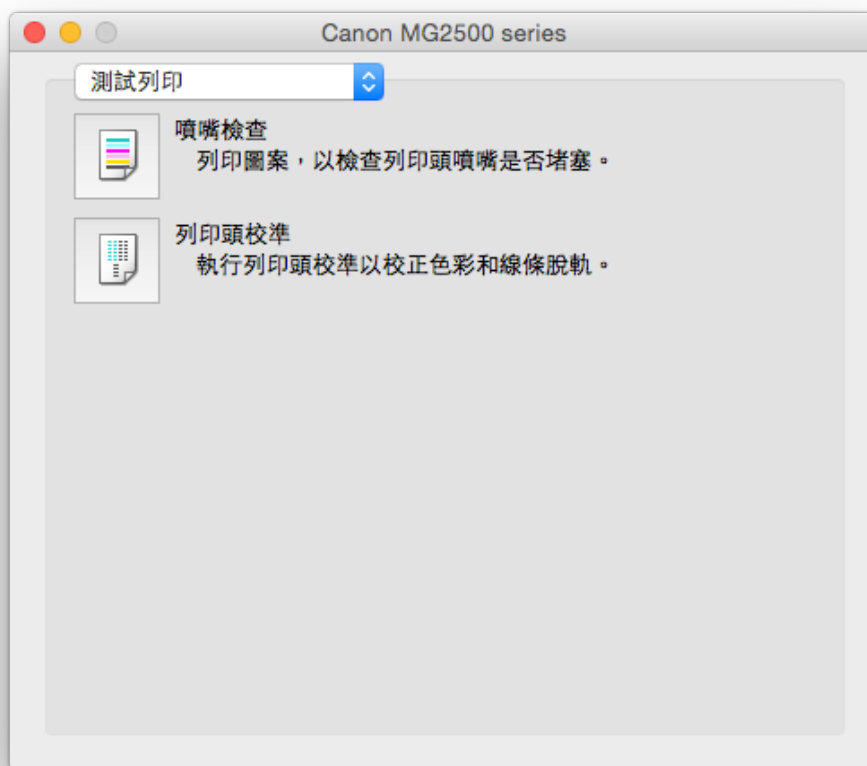


## 8. 測試列印版面

- 噴嘴檢查
- 列印頭校準

Click Test Print Screen

- Nozzle Check
- Print Head Alignment



## 9. 電源設定版面

- 電源關閉
- 自動電源

### Power Setting Screen

- Power Off
- Auto Power



## 10. 墨水量資訊版面

- 顯示印表機的估計墨水量

### Ink Level Information Screen

- Check the estimated ink levels





11. 墨盒設定板面 (只支援一支黑色和一支彩色墨水的印表機)

- 黑色和彩色
- 僅黑色
- 僅彩色

Click Ink Cartridge Settings (*Support printer with one black and one color ink cartridge only*)

- Black and Color
- Black only
- Color Only



## 12. 靜音設定板面

- 不使用靜音模式
- 總是使用靜音模式
- 在指定時間內使用靜音模式

### Quiet Settings Screen

- Do not use quiet mode
- Always use quiet mode
- Use quiet mode during specified hours



### 13. 自訂設定版面

- 墨水晾乾等待時間
- 手動校準列印頭

#### Custom Settings Screen

- Ink drying wait time
- Align heads manually



~完~

~END~