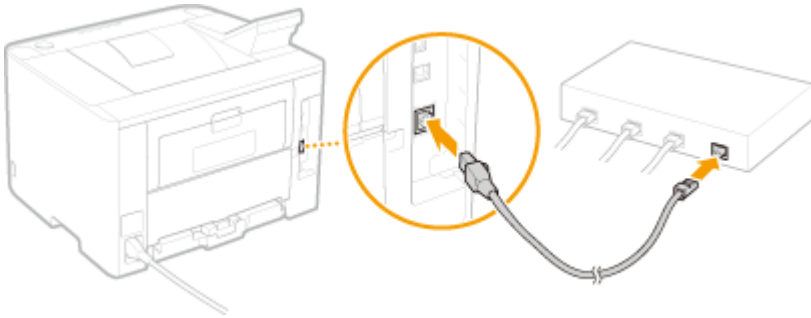


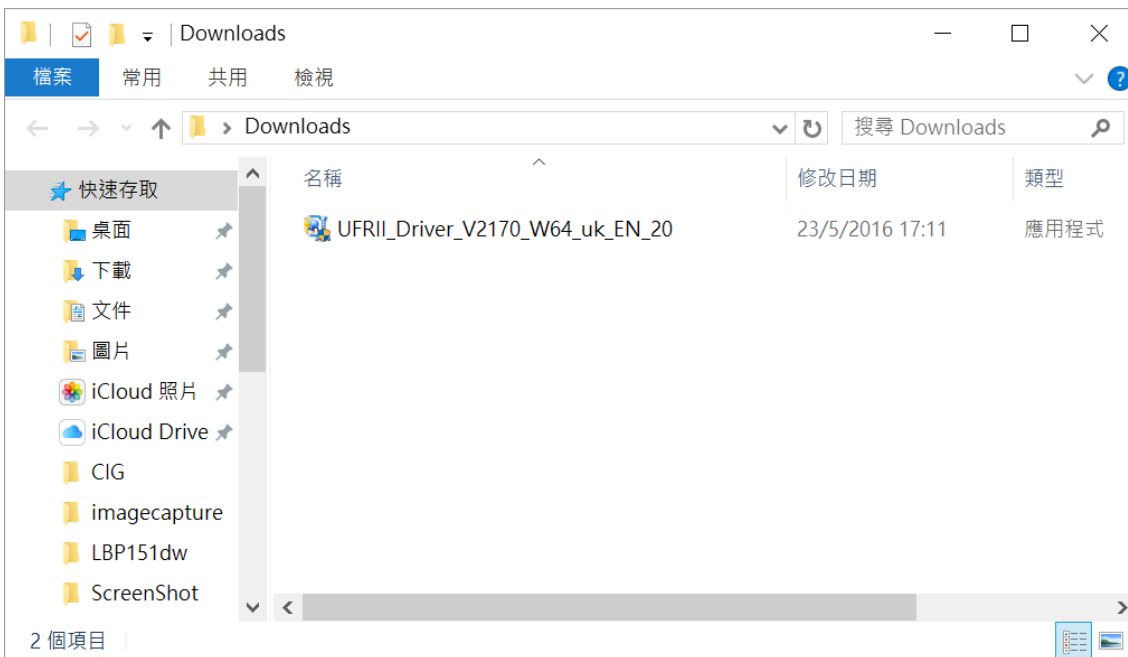
**透過乙太網路連接安裝 LBP251dw 印表機的驅動程式步驟 (以 Win 10 作示範)**  
**LBP251dw printer driver Installation Guide for Windows via LAN connection (Win 10 as example)**

使用乙太網路連接線接駁到印表機及開啟印表機

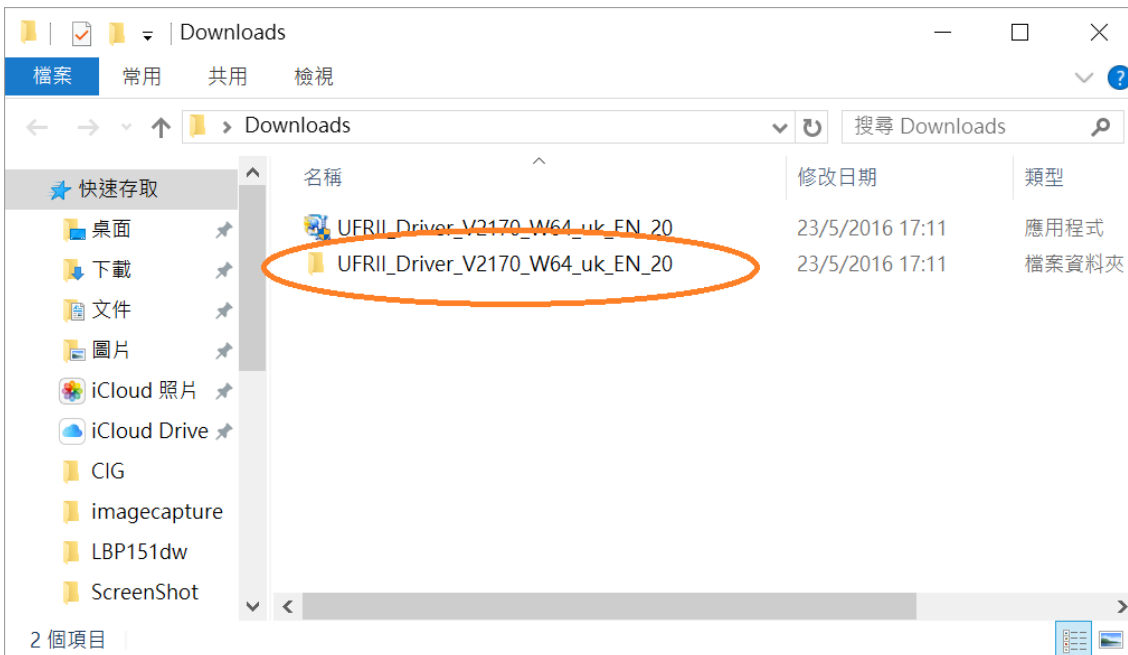
Connect the machine to a router by using a LAN cable and turn on computer



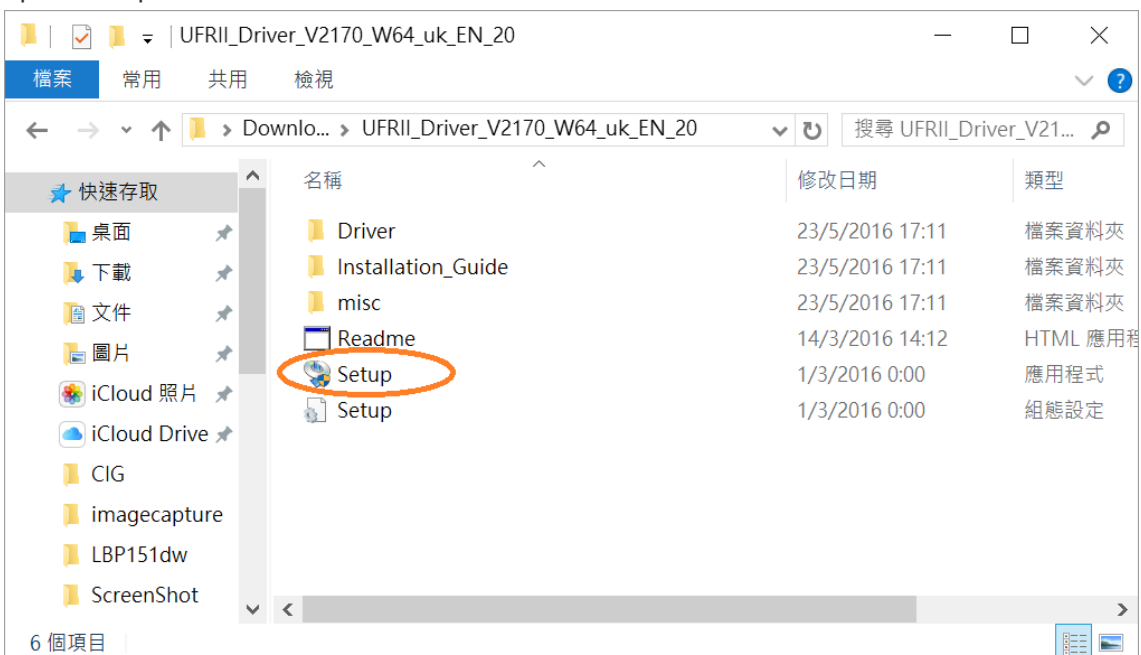
1. 到佳能網站 <https://hk.canon/en/support/imageCLASS%20LBP251dw/model> ,  
下載印表機的驅動程式- UFR II Printer Driver V30.xx  
(Go to: <https://hk.canon/en/support/imageCLASS%20LBP251dw/model> ,  
download the printer driver - UFR II Printer Driver V30.xx)
2. 下載的文件以自解壓縮檔檔案(.exe 格式)保存在指定的文件夾中  
The self extractor file (.exe format) is saved to specified folder



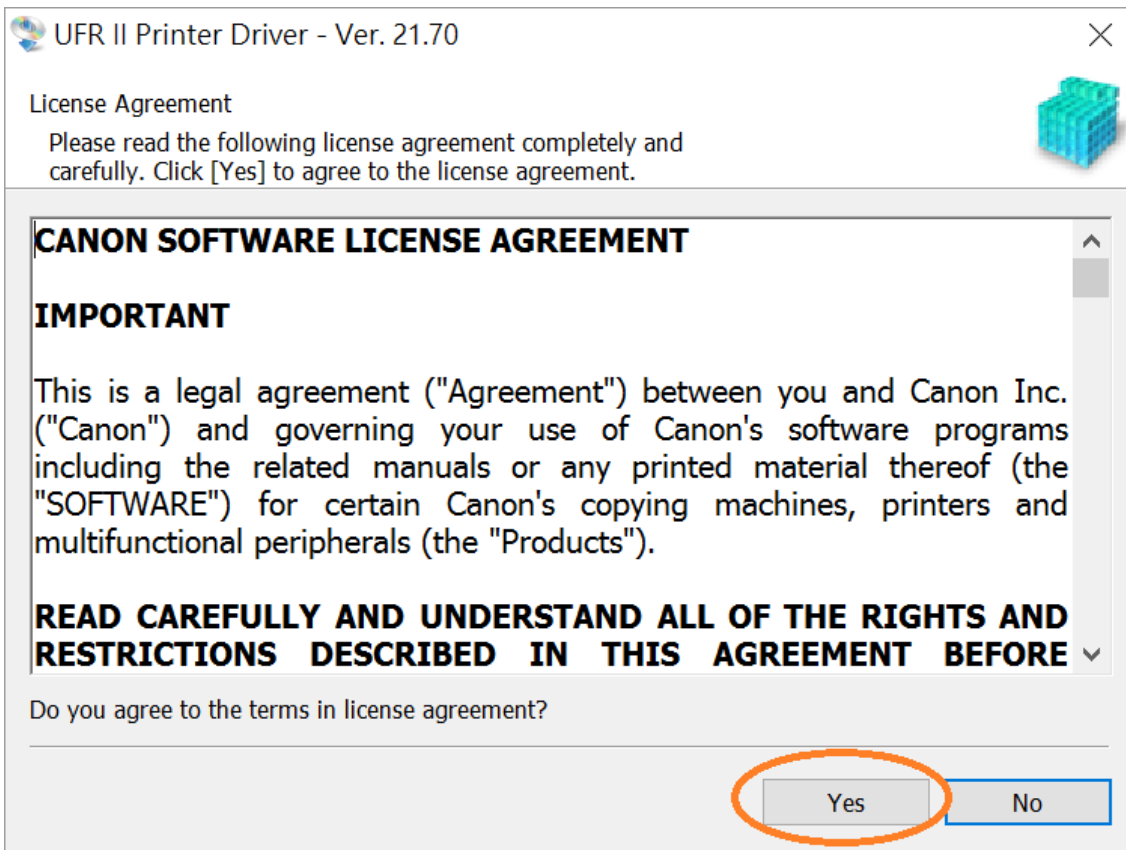
3. 打開「UFR11\_Driver\_\*\*\*.exe」檔案。將在同一文件夾中創建新文件夾，如打開文件解壓縮時出現「使用者帳戶控制」選項，按「是」，打開「UFR11\_Driver\_\*\*\*」文件夾  
Open “UFR11\_Driver\_\*\*\*.exe” file, a new folder will be created. If “User Account Control” window pop-up, click “Yes”, open “UFR11\_Driver\_\*\*\*” file folder



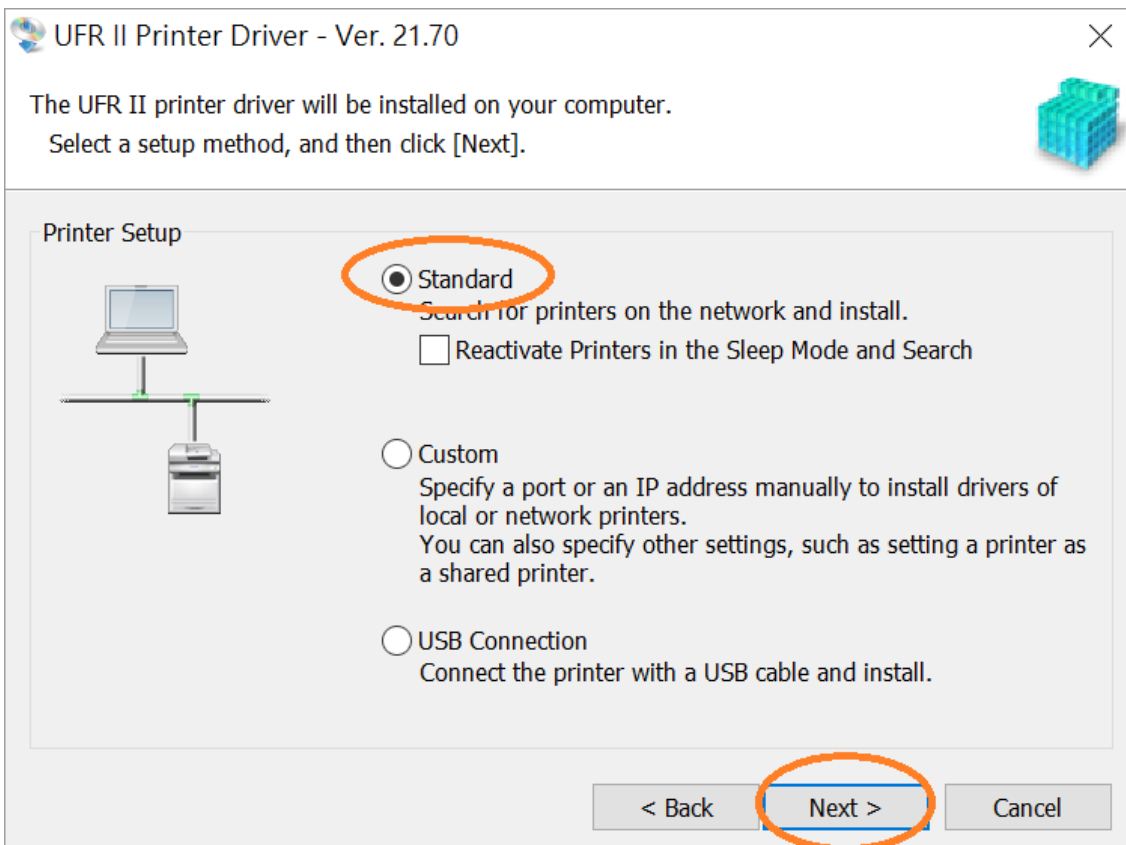
4. 開啓“Setup.exe”檔案  
Open “Setup.exe” file



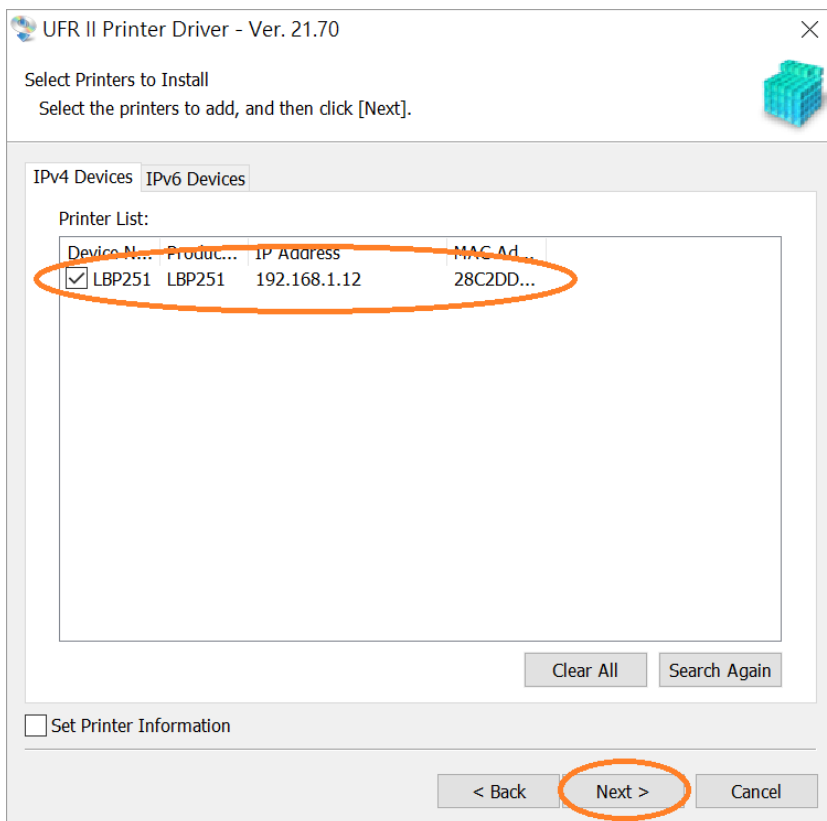
5. 按「Yes」  
Click “Yes”



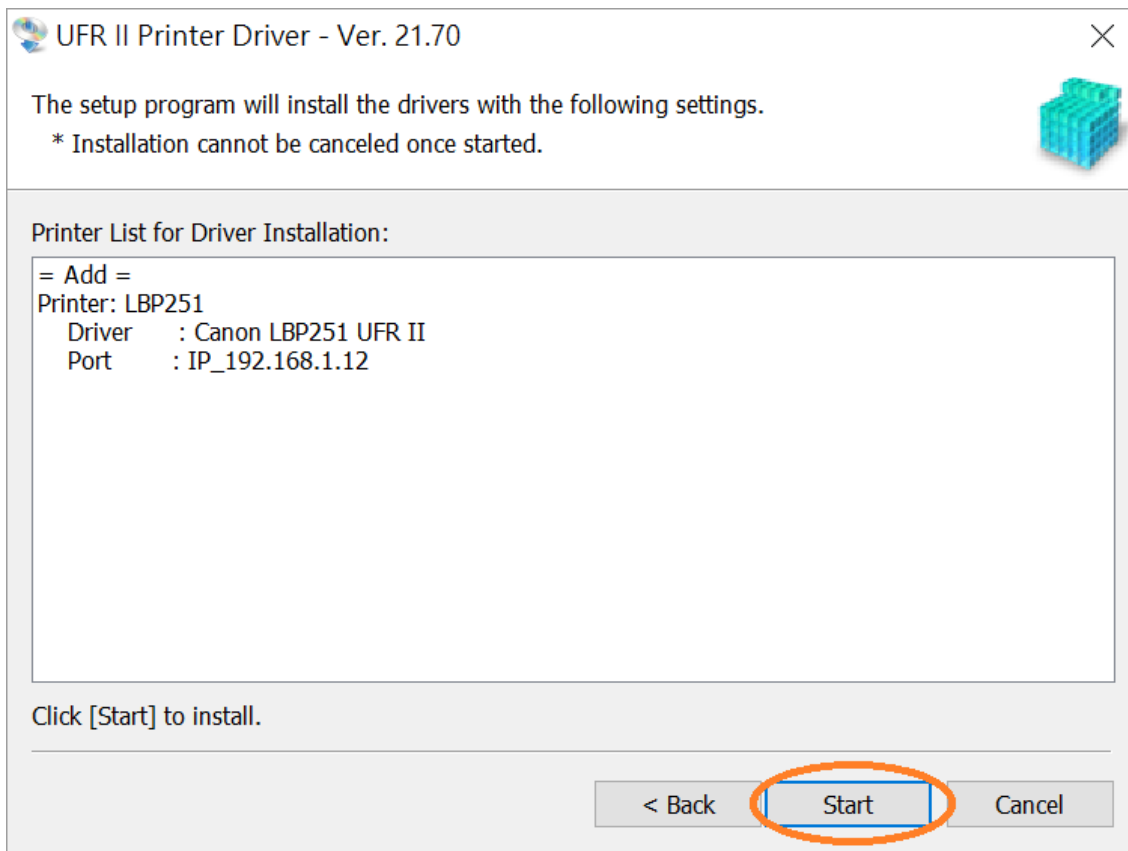
6. 選「Standard」，按「Next >」  
Choose “Standard”, click “Next >”



7. 於「Printer List」內剔選「LBP251」，按「Next >」  
Check the box “LBP251” at “Printer List”, click “Next >”

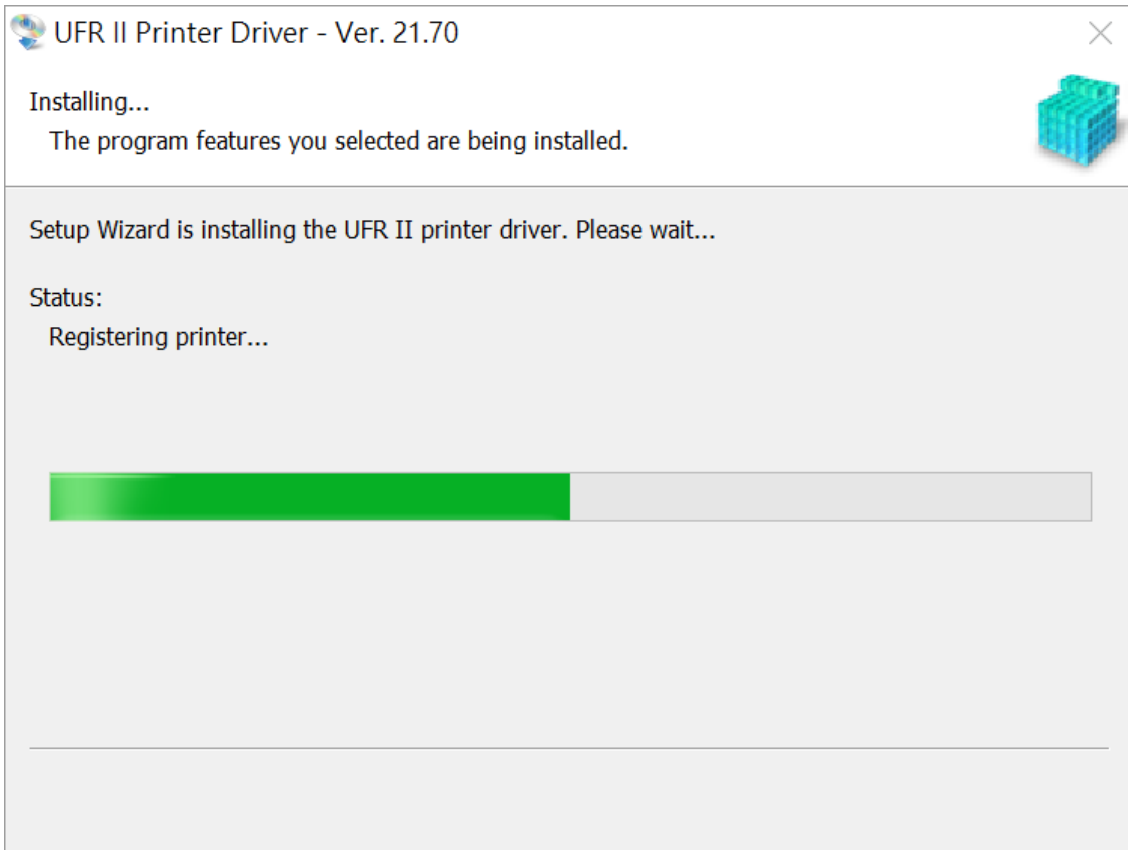


8. 按「Start」  
Click “Start”



9. 請等待安裝精靈完成印表機驅動程式安裝

Please wait for setup wizard to accomplish the printer driver installation



10. 建議別選「Restart My Computer Now」，按「Restart」重新開機

We recommend to choose "Restart My Computer Now", click "Restart" to reboot computer

