

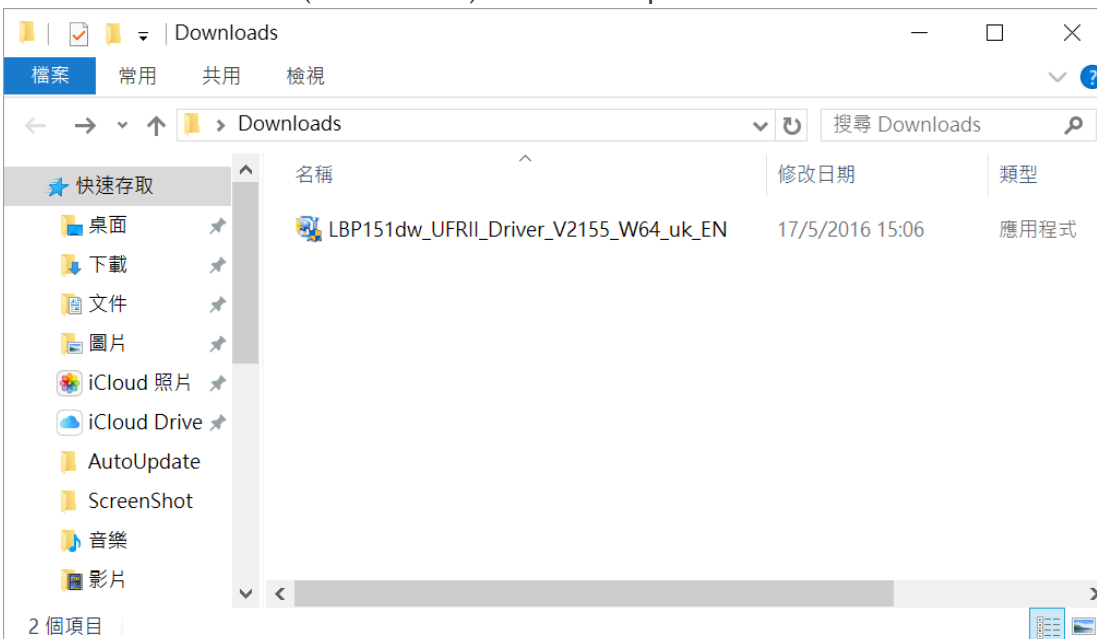
透過無線網路連接安裝LBP151dw印表機的驅動程式步驟 (以Win 10作示範)

LBP151 printer driver Installation Guide for Windows via Wi-Fi connection (Win 10 as example)

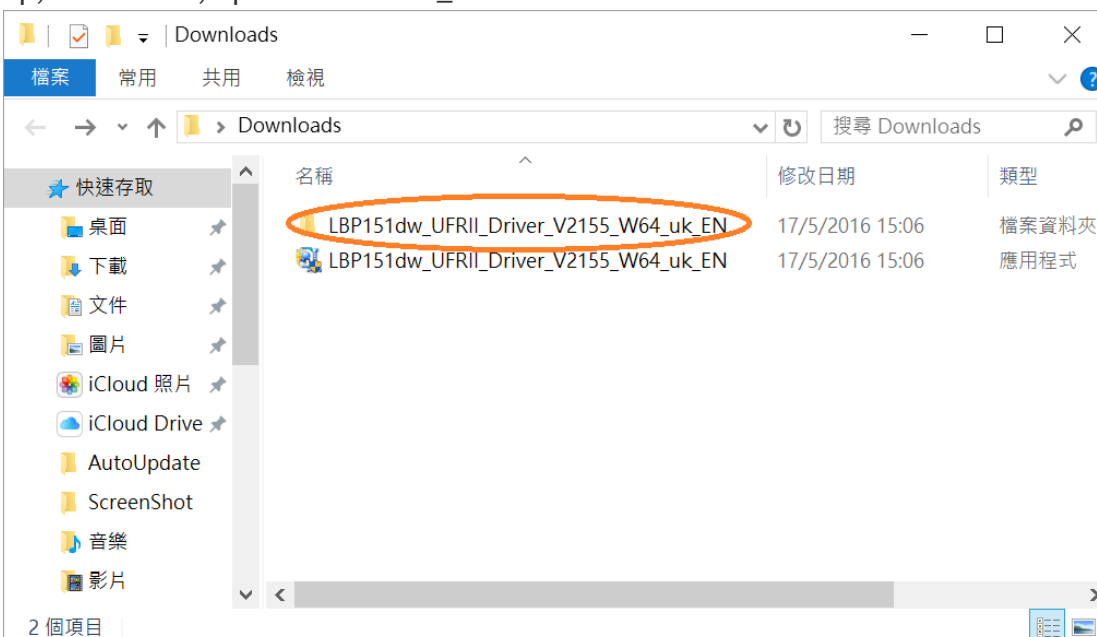
****注意: 安裝驅動程式前請勿接駁USB線，以免系統發生錯誤****

**** Please don't plug the USB cable until the driver asked to do so**

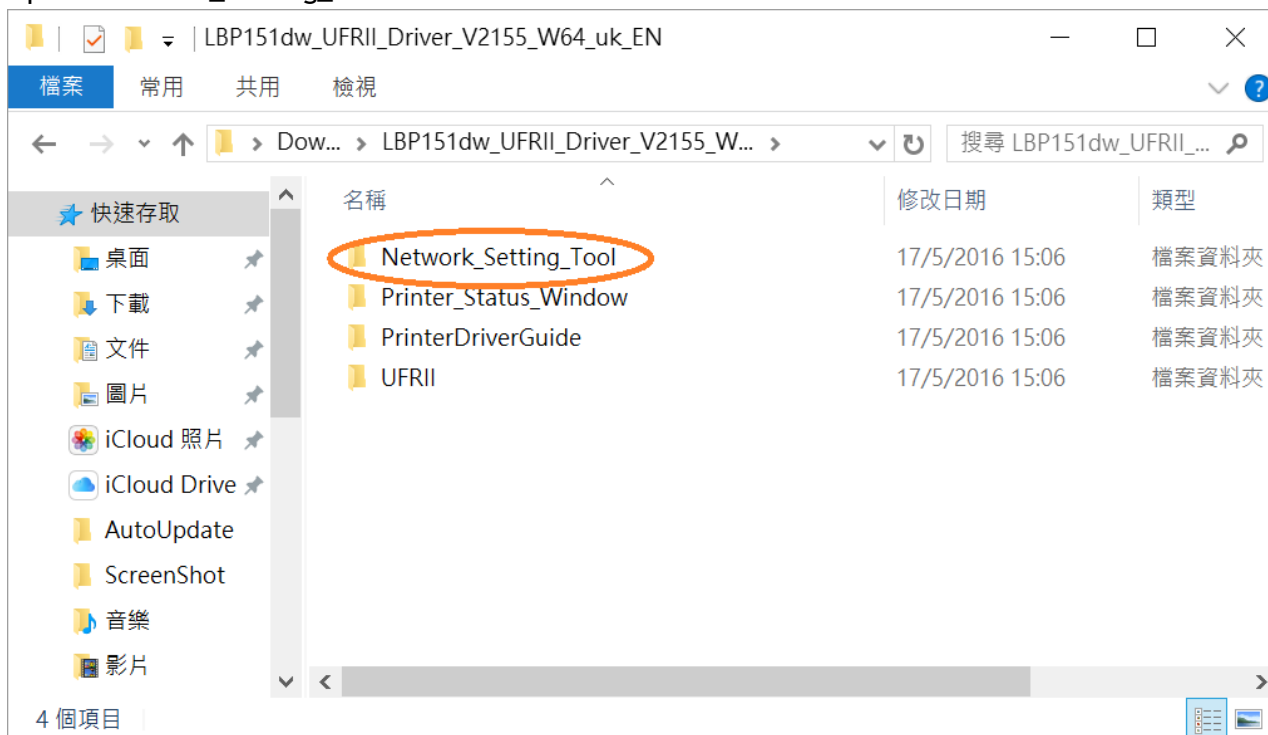
1. 到佳能網站<http://support-hk.canon-asia.com/>，選擇相關的印表機型號及下載印表機的驅動程式
(Go to: <http://support-hk.canon-asia.com/> , select related printer model, and download the printer driver)
2. 下載的文件以自解壓縮檔檔案(.exe格式)保存在指定的文件夾中
The self extractor file (.exe format) is saved to specified folder



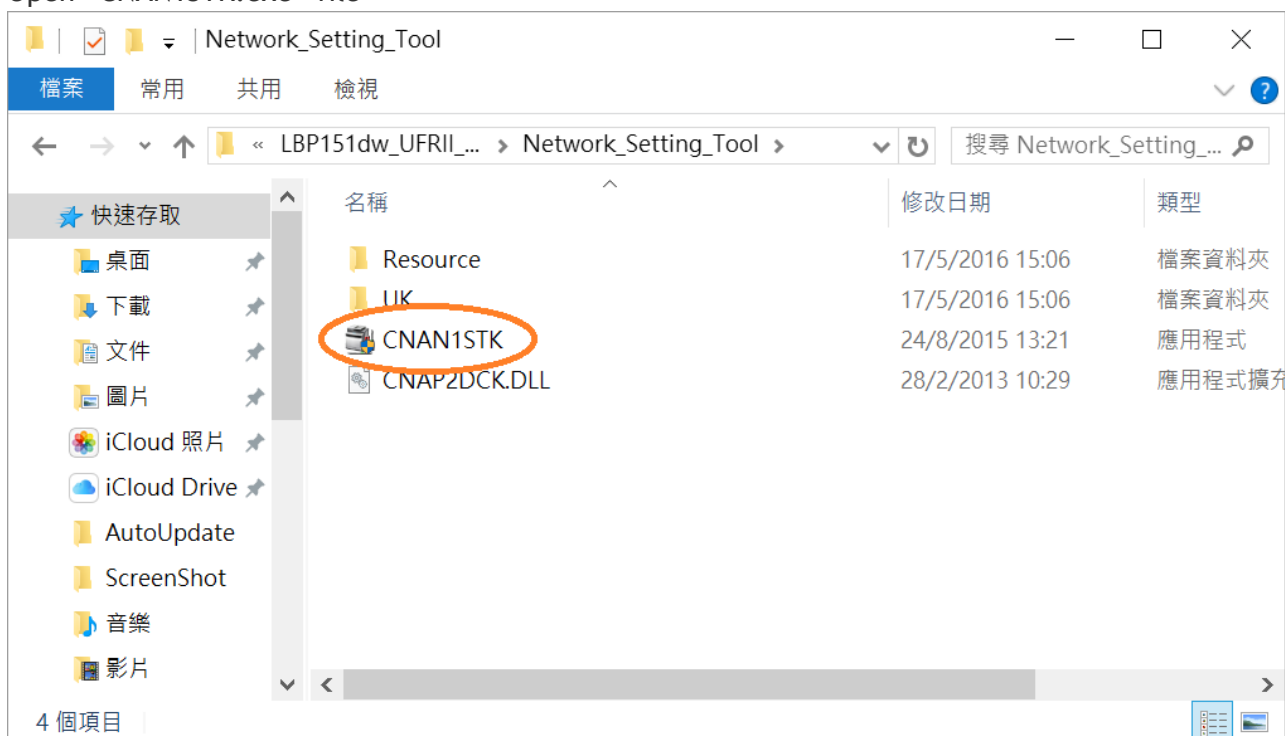
3. 打開「LBP151dw_***.exe」檔案。將在同一文件夾中創建新文件夾，如打開文件解壓縮時出現「使用者帳戶控制」選項，按「是」，打開「LBP151dw_***」文件夾
Open “LBP151dw_***.exe” file, a new folder will be created. If “User Account Control” window pop-up, click “Yes”, open “LBP151dw_***” file folder



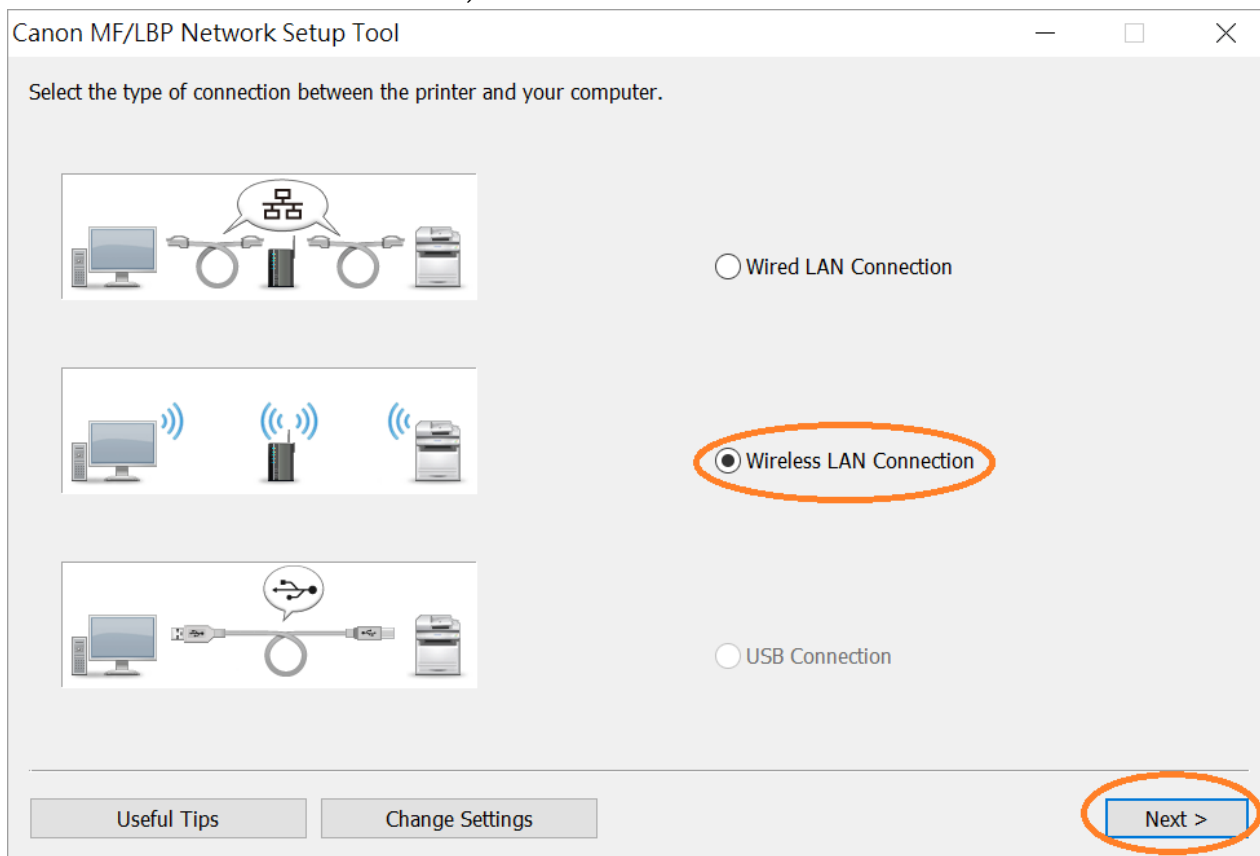
4. 打開「Network_Setting_Tool」文件夾
Open “Network_Setting_Tool” file folder



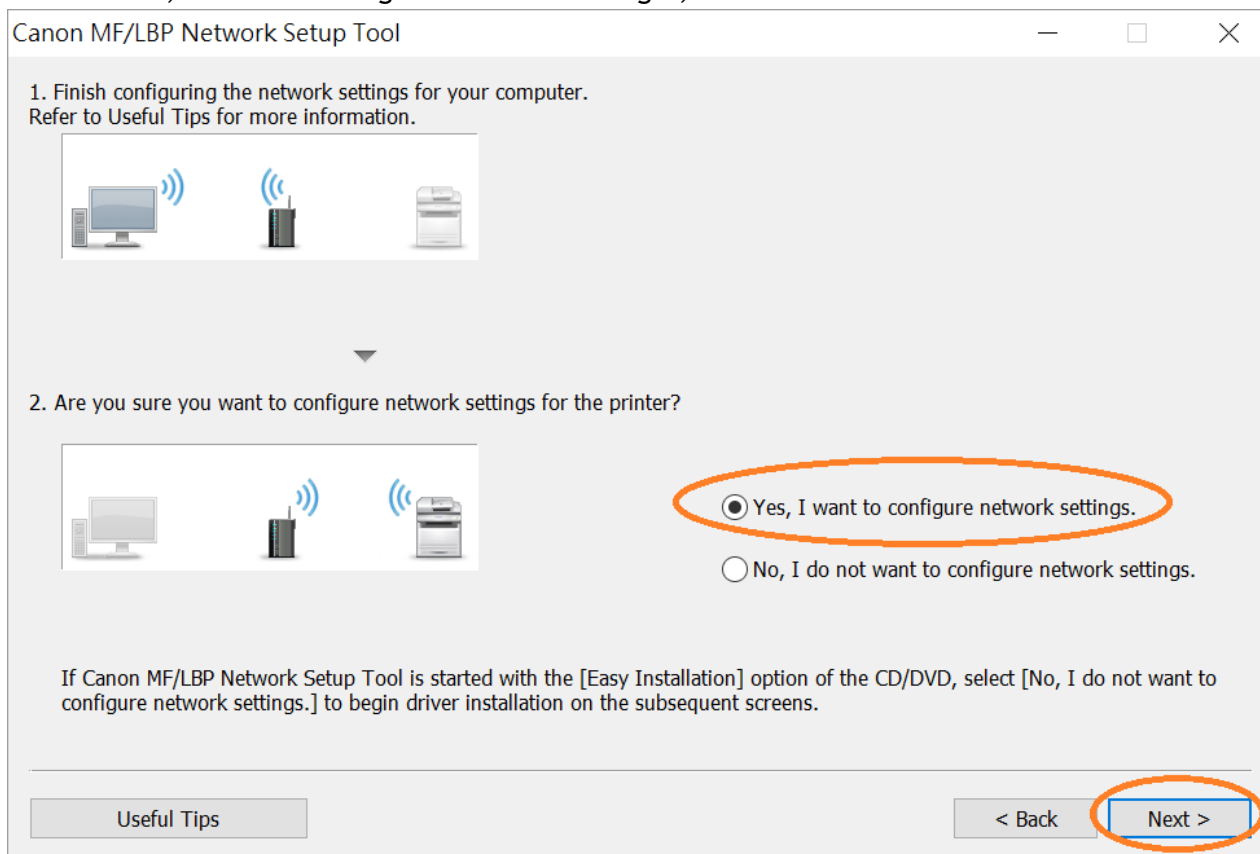
5. 開啟「CNAN1STK.exe」檔案
Open “CNAN1STK.exe” file



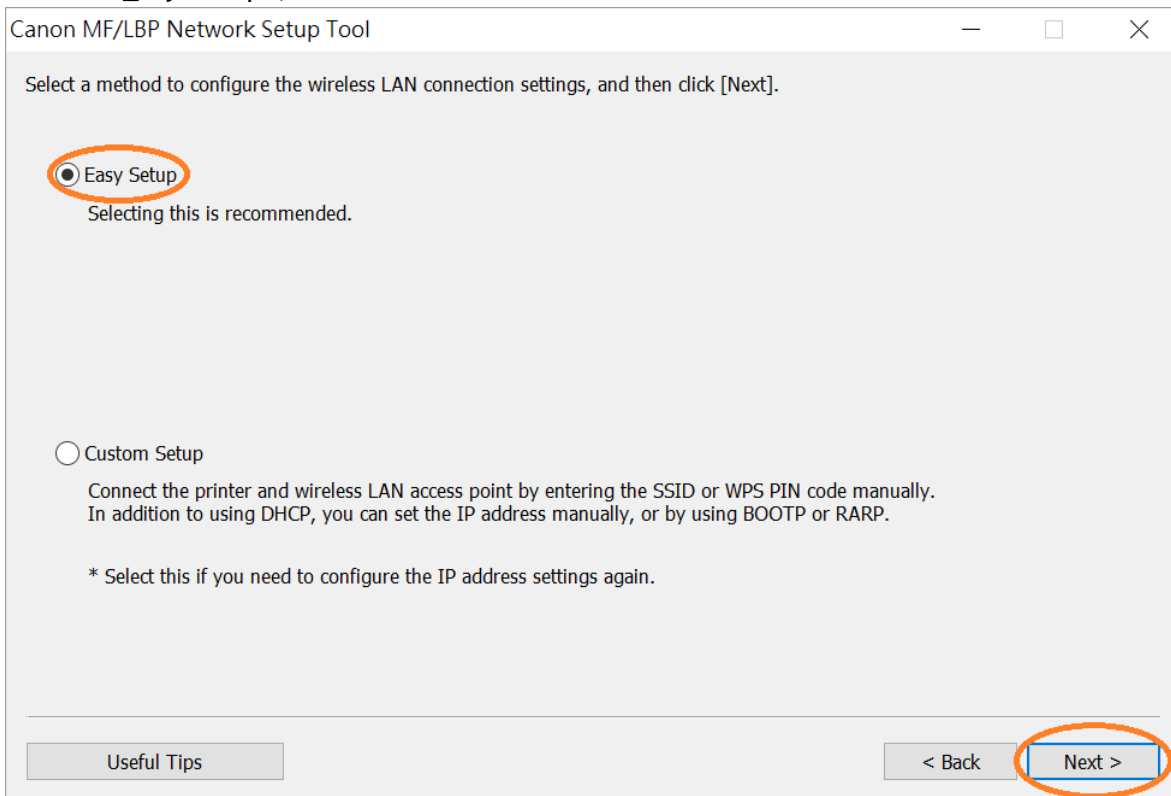
6. 選擇「Wireless LAN Connection」，按「Next >」
Choose “Wireless LAN Connection”, click “Next >”



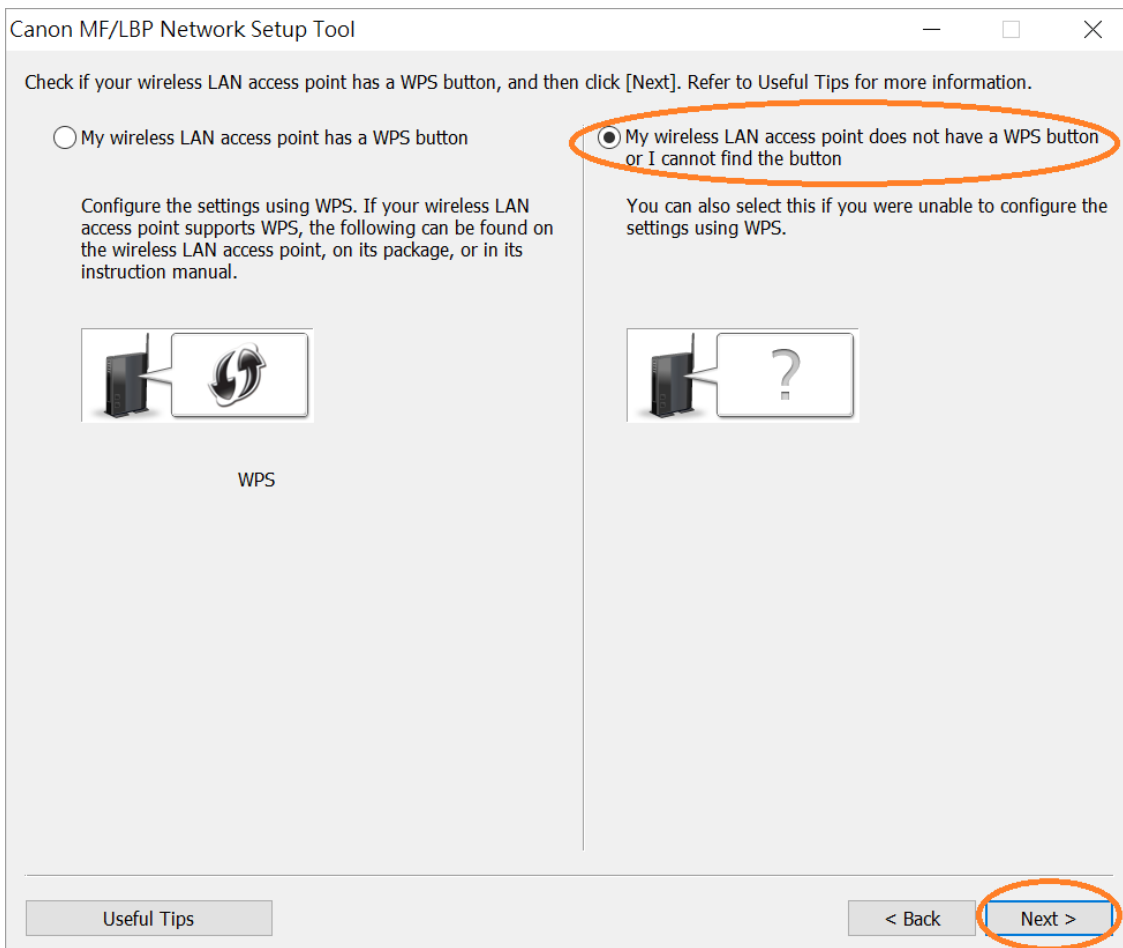
7. 選擇「Yes, I want to configure network settings」，按「Next >」
Choose “Yes, I want to configure network settings”, click “Next >”



8. 選擇「Easy Setup」，按「Next >」
Choose “Easy Setup”, click “Next >”

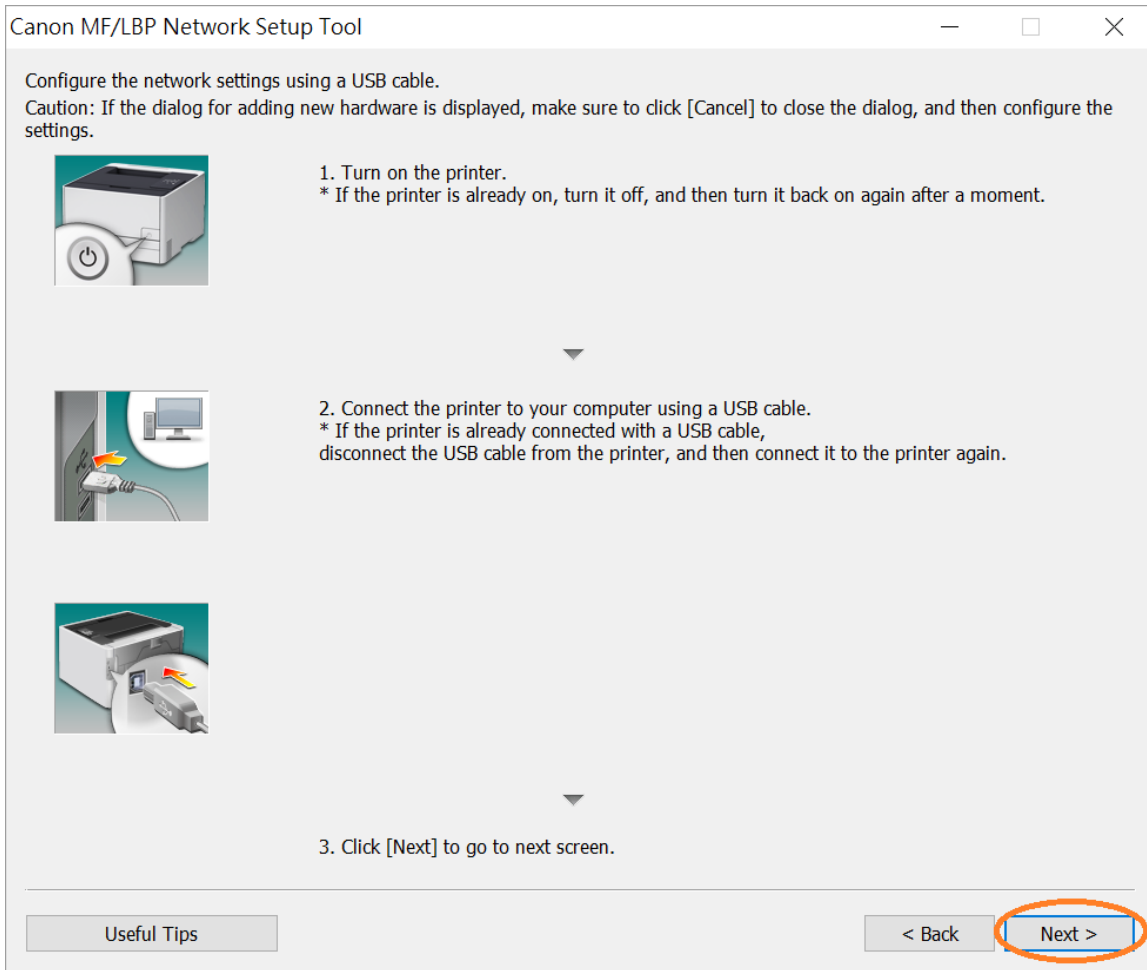


9. 選擇「My wireless LAN access point does not have a WPS button or I cannot find the button」，按「Next >」
Choose “My wireless LAN access point does not have a WPS button or I cannot find the button”, click “Next >”



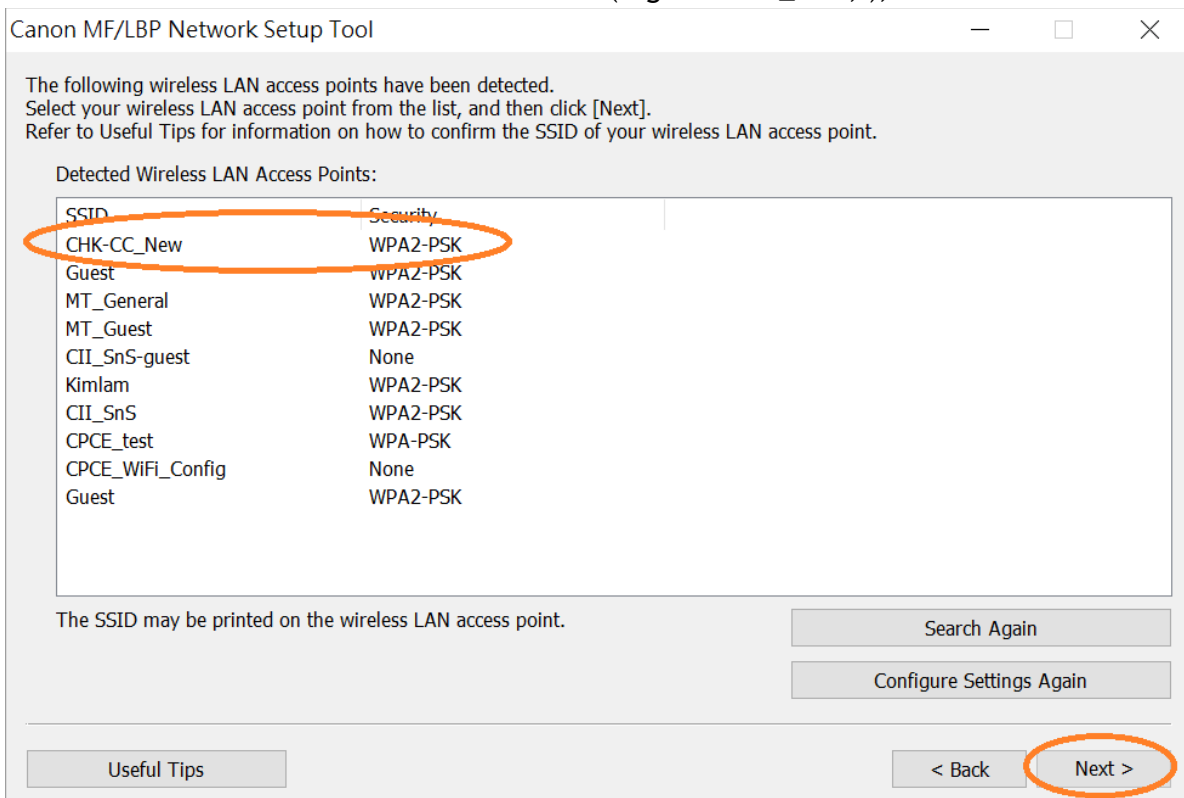
10. 使用USB電纜線連接印表機和電腦，開啟印表機，按「Next」

Connect printer and computer with a USB cable, turn on the printer, click “Next”



11. 於「SSID」列表中選擇Wi-Fi網絡名稱(例如: CHK-CC_New)，按「Next >」

Choose Wi-Fi network name under “SSID” list (e.g: CHK-CC_New,), click “Next >”



12. 於「Network Key」輸入Wi-Fi 網路金鑰，按「Connect」
Type in Wi-Fi password at “Network Key”, click “Connect”

Canon MF/LBP Network Setup Tool

Enter the network key for the wireless LAN access point, and then click [Connect].
Refer to Useful Tips for information on how to confirm the network key.

Network Key:

Mask Network Key during Entry



The network key may be printed on the wireless LAN access point.

Useful Tips < Back **Connect**

13. 斷開USB電纜線，按「Next >」
Disconnect the USB cable, click “Next >”

Canon MF/LBP Network Setup Tool

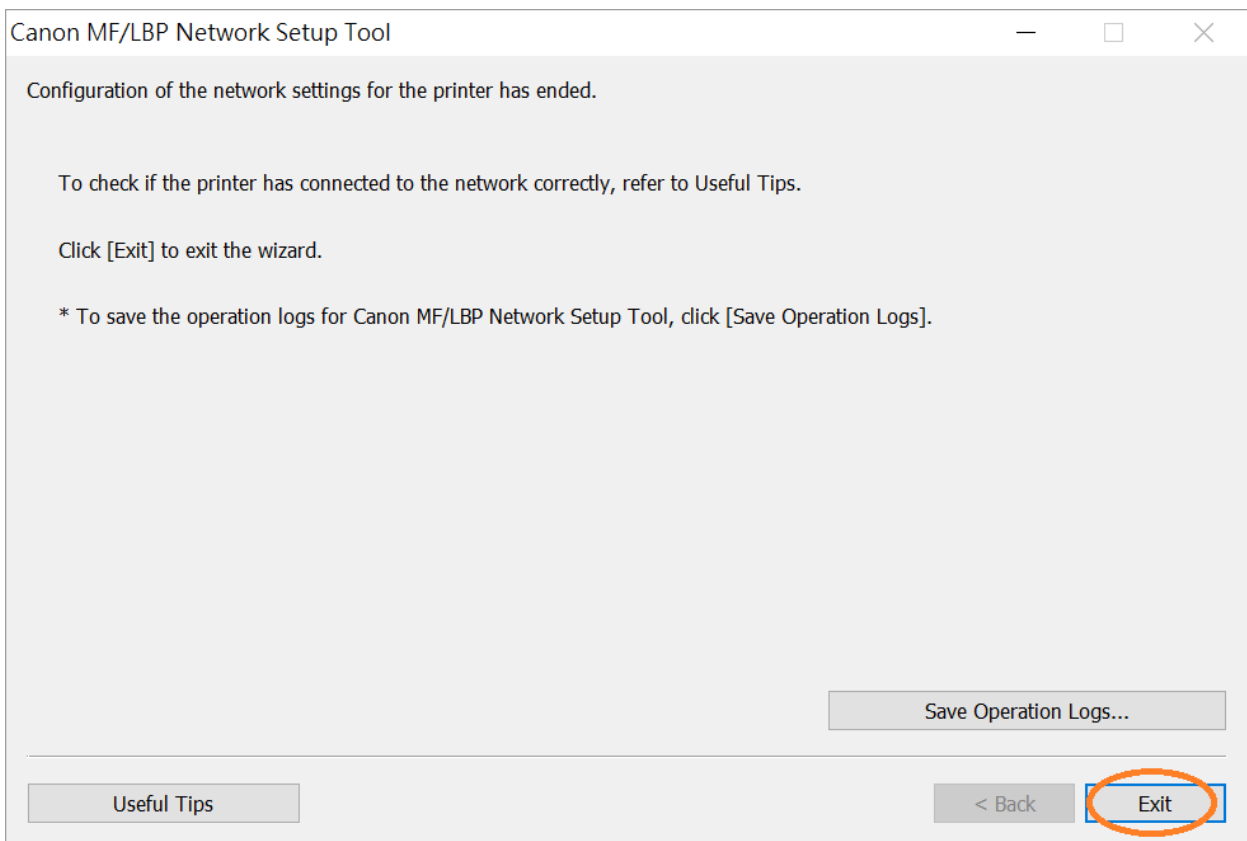
Disconnect the USB cable, and then click [Next].



Useful Tips < Back **Next >**

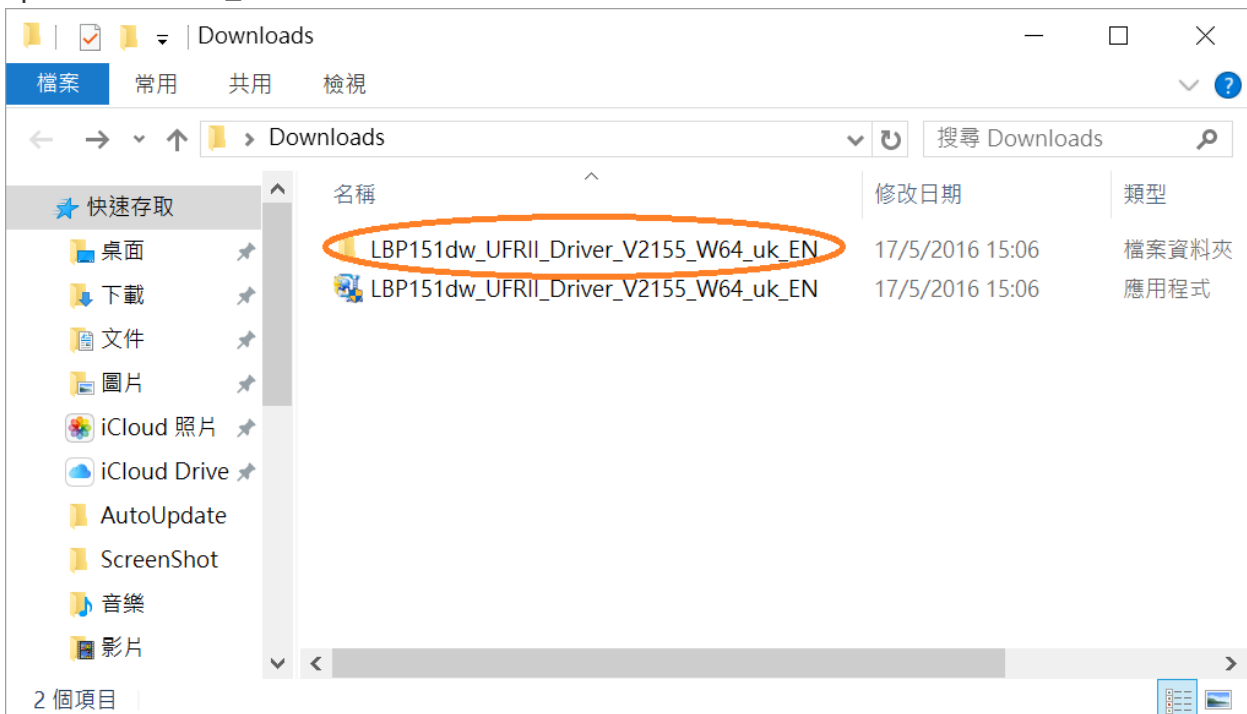
14. 按「Exit」

Click “Exit”

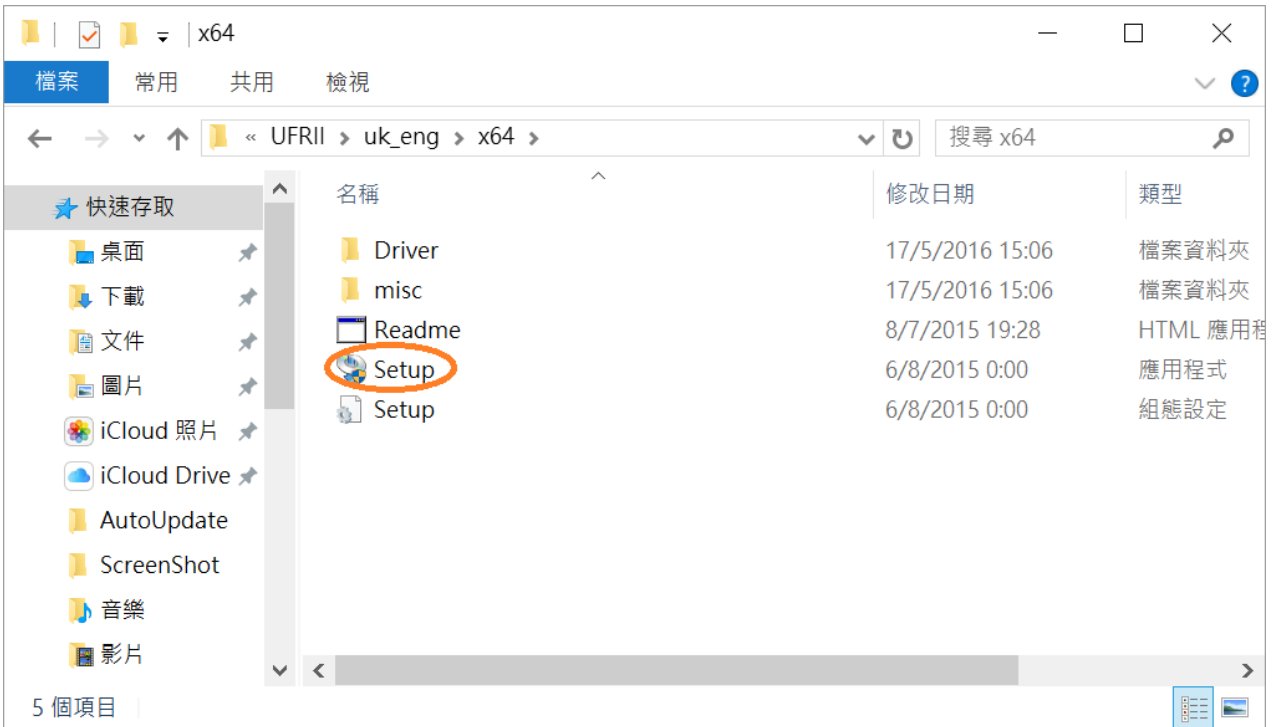


15. 打開「LBP151dw_***」文件夾

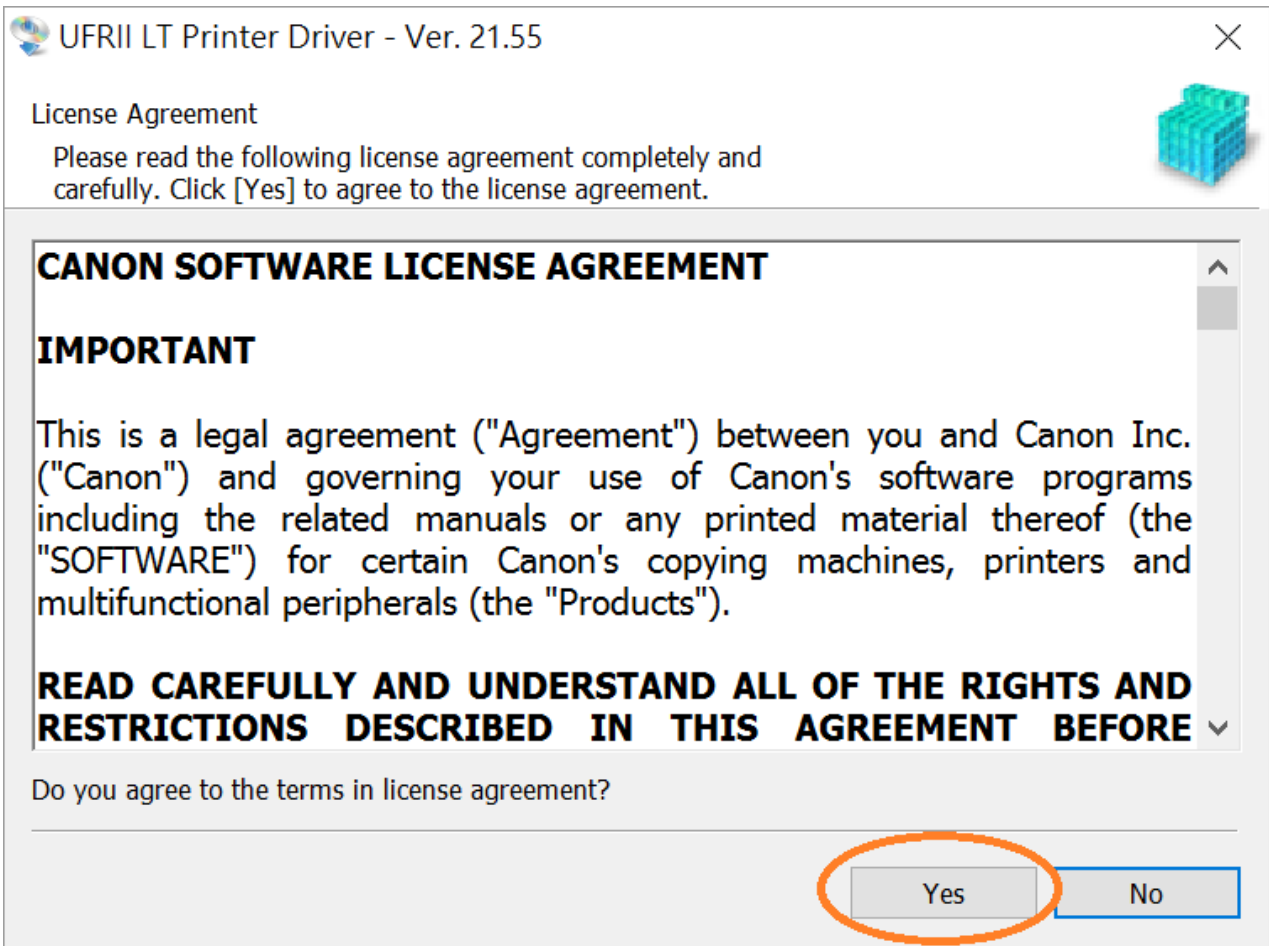
open “LBP151dw_***” file folder



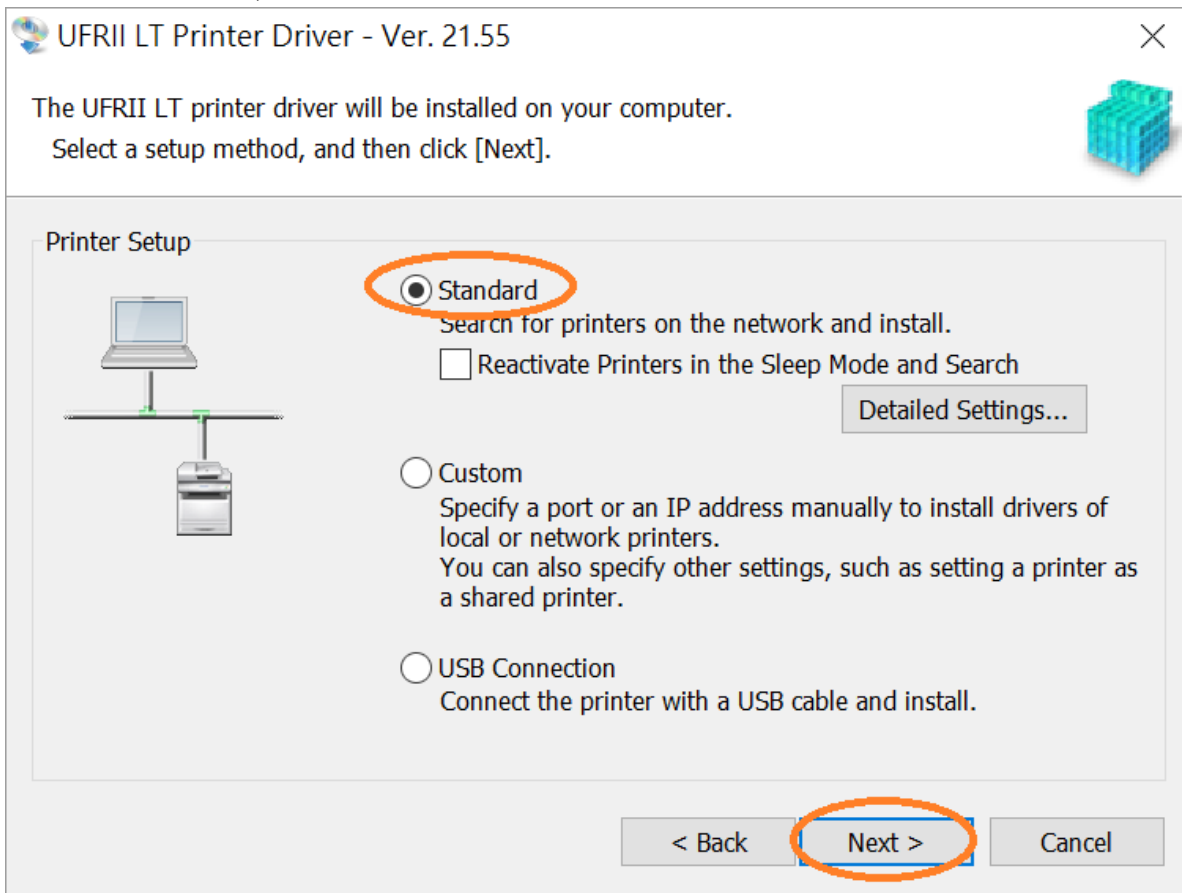
16. 打開以下文件夾，「UFR II」>「uk_eng」>「32bit」或「x64」文件夾，開啓“Setup.exe”檔案
Open following folders “UFR II” > “uk_eng” > “32bit” or “x64”, open “Setup.exe” file



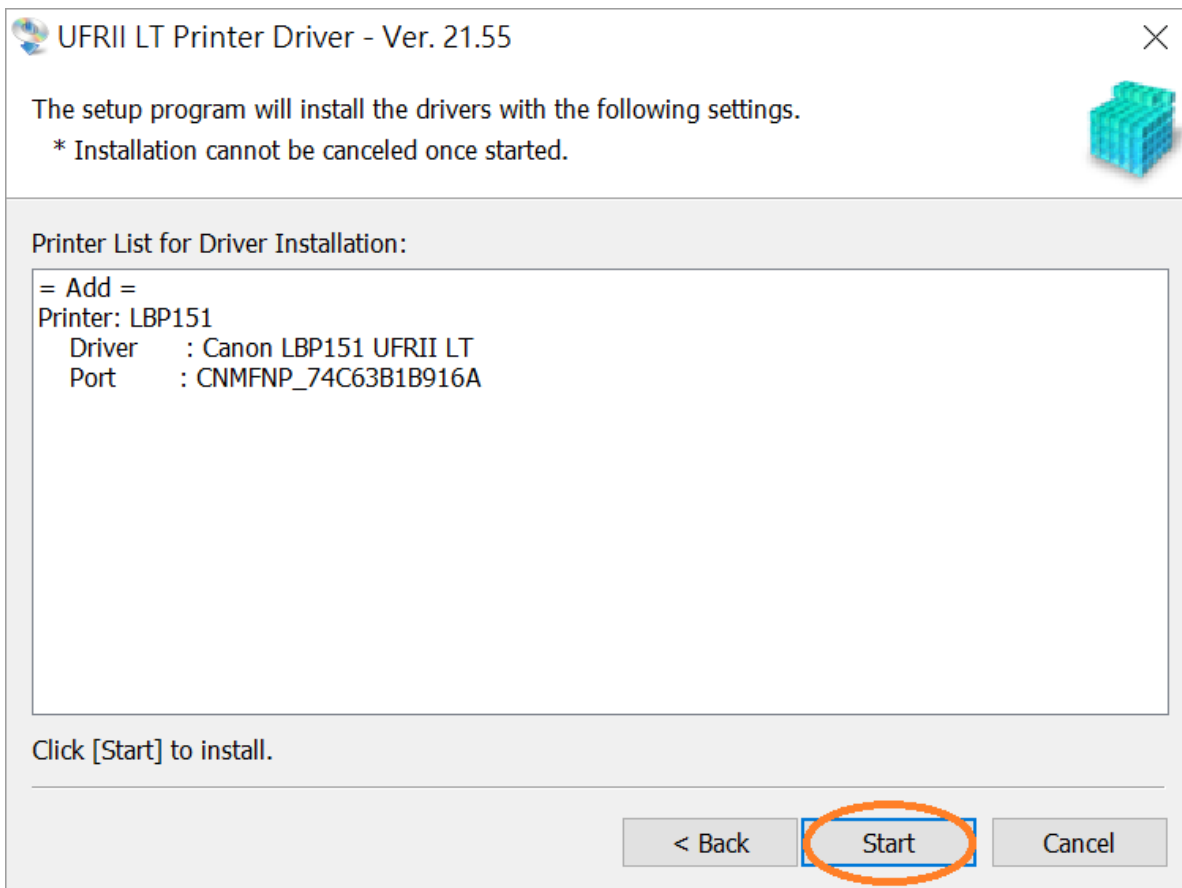
17. 按「Yes」
Click “Yes”



18. 選「Standard」，按「Next >」
Choose “Standard”, click “Next >”

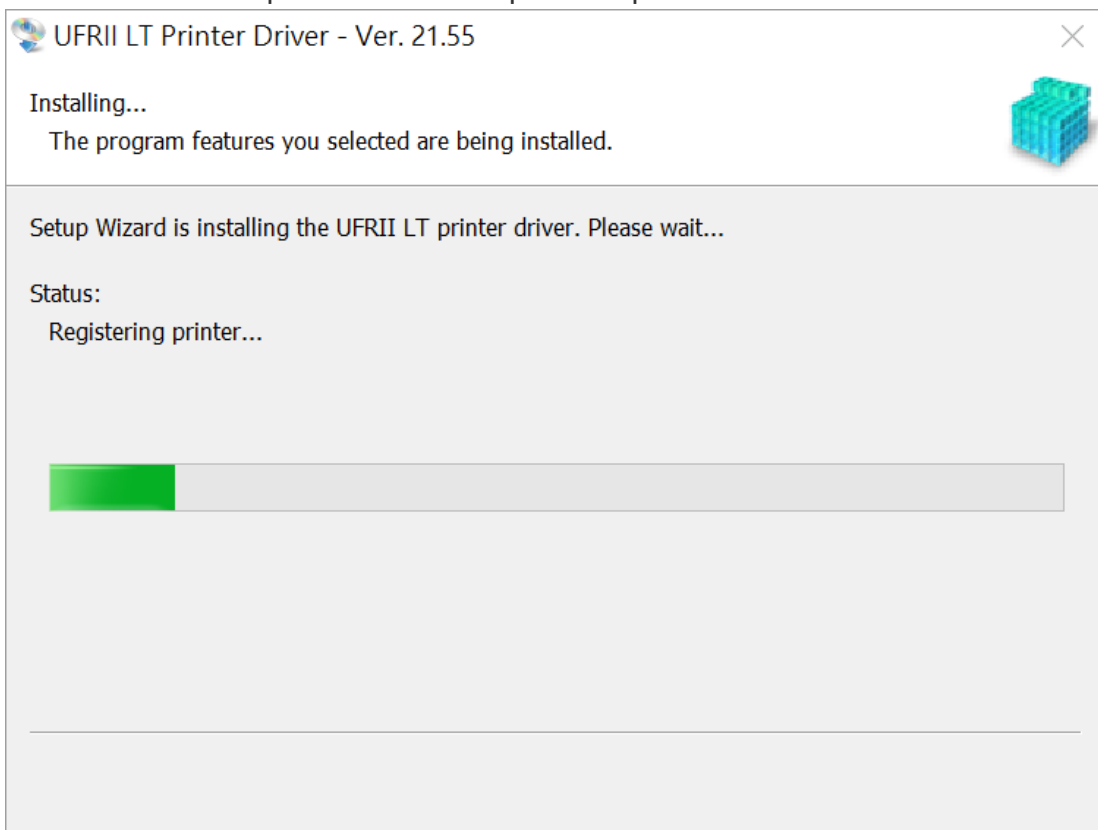


19. 按「Start」
Click “Start”



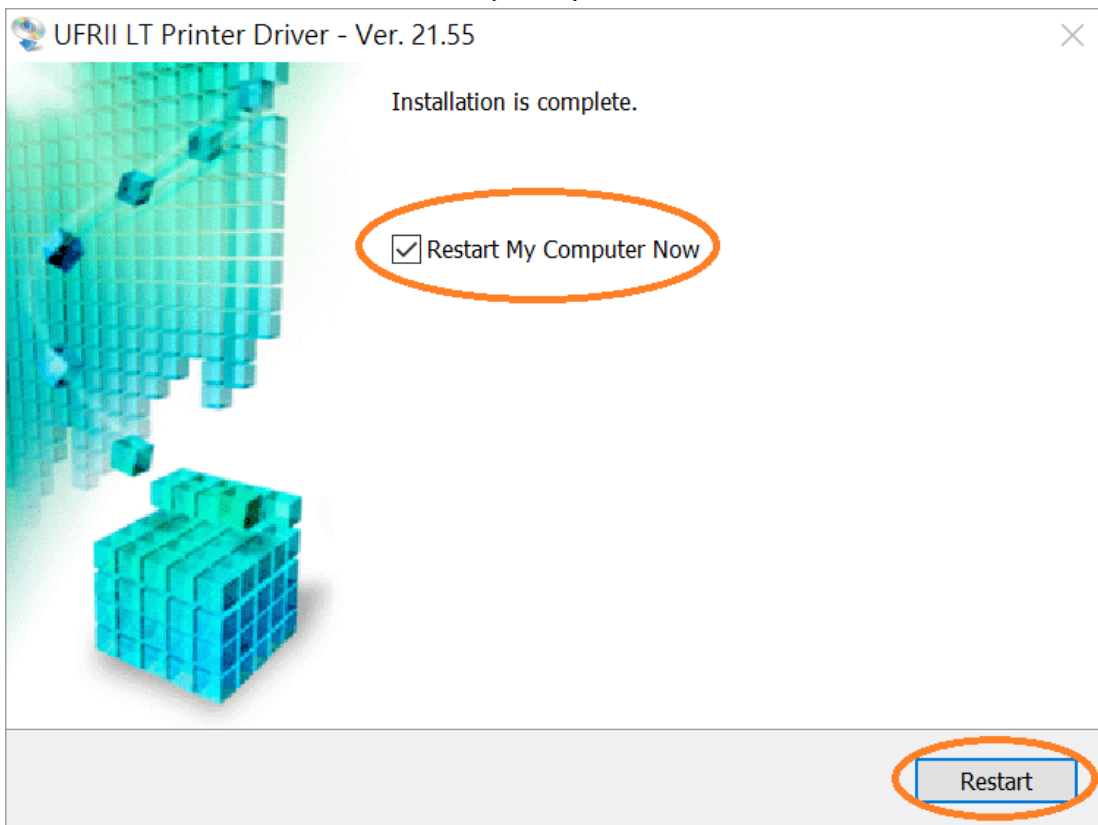
20. 請等待安裝精靈完成印表機驅動程式安裝

Please wait for setup wizard to accomplish the printer driver installation



21. 建議別選「Restart My Computer Now」，按「Restart」重新開機

We recommend to choose "Restart My Computer Now", click "Restart" to reboot computer



-完-

-End-