

**透過 USB 連接安裝 LBP151dw 印表機的驅動程式步驟 (以 Win 10 作示範)**

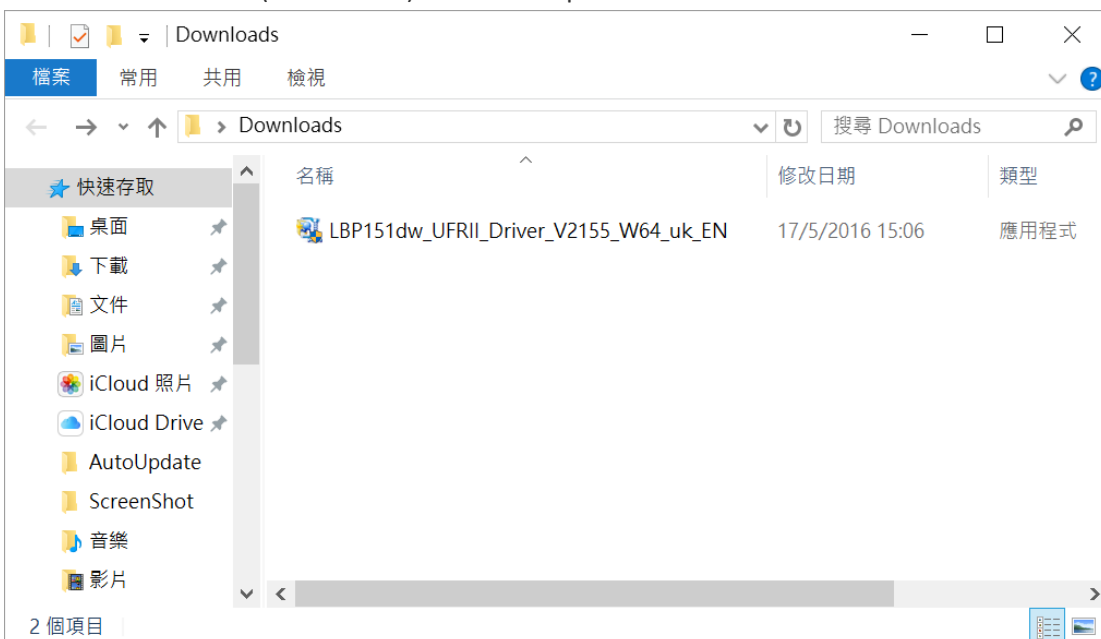
**LBP151 printer driver Installation Guide for Windows via USB connection (Win 10 as example)**

**\*\*注意: 安裝驅動程式前請勿接駁 USB 線，以免系統發生錯誤\*\***

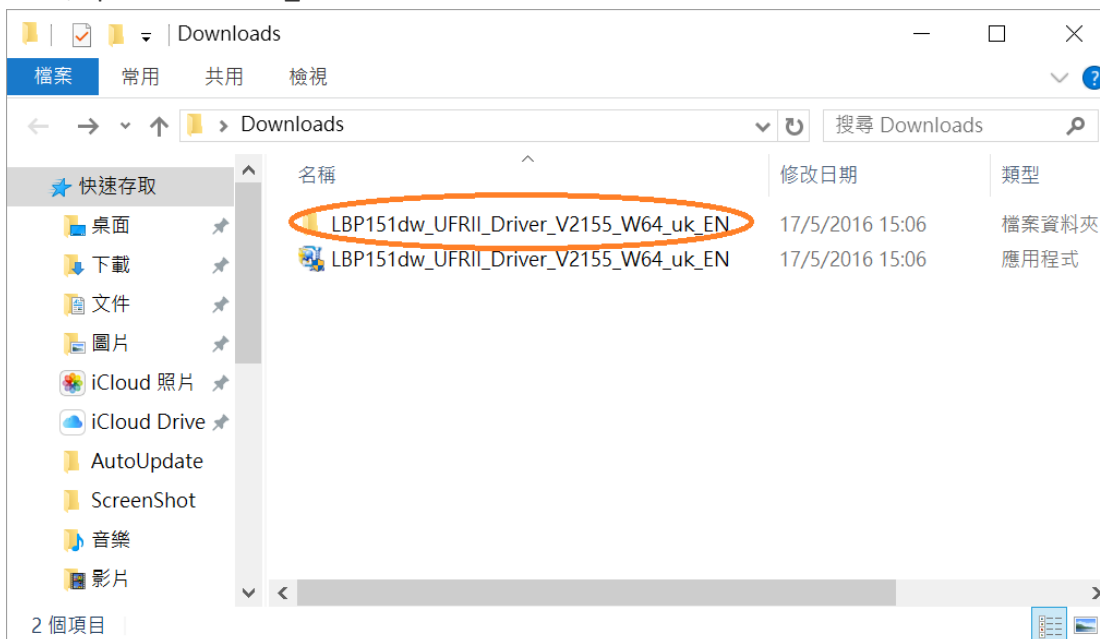
**\*\* Please don't plug the USB cable until the driver asked to do so**

1. 到佳能網站 <https://hk.canon/en/support/imageCLASS%20LBP151dw/model>  
下載印表機的驅動程式 - LBP151dw UFR II LT Printer Driver  
(Go to: <https://hk.canon/en/support/imageCLASS%20LBP151dw/model>  
Download the printer driver - LBP151dw UFR II LT Printer Driver)

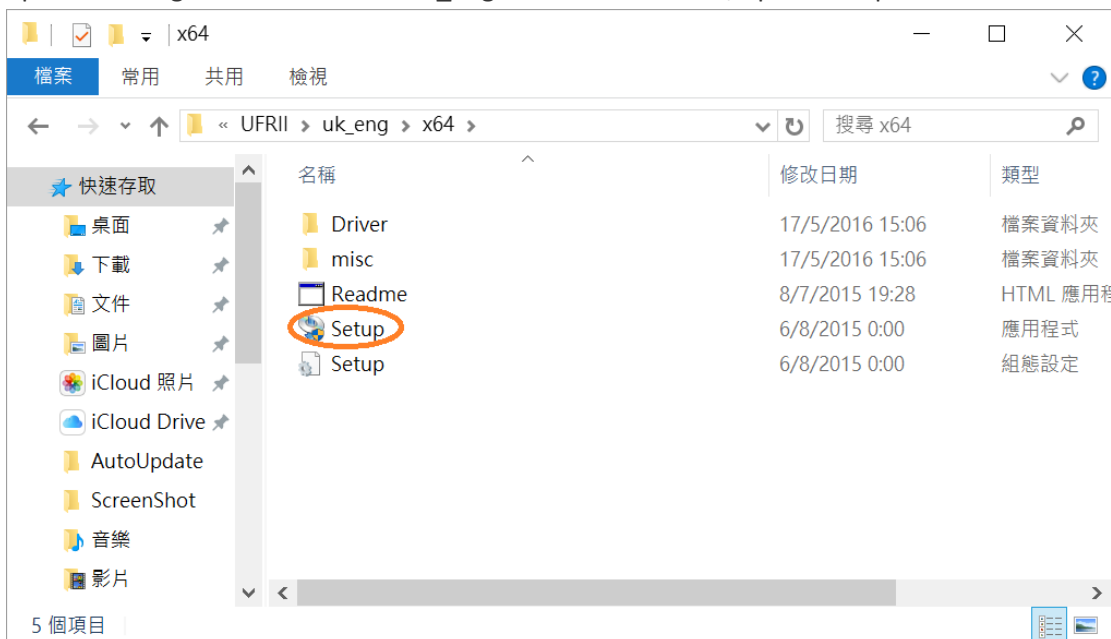
2. 下載的文件以自解壓縮檔檔案(.exe 格式)保存在指定的文件夾中  
The self extractor file (.exe format) is saved to specified folder



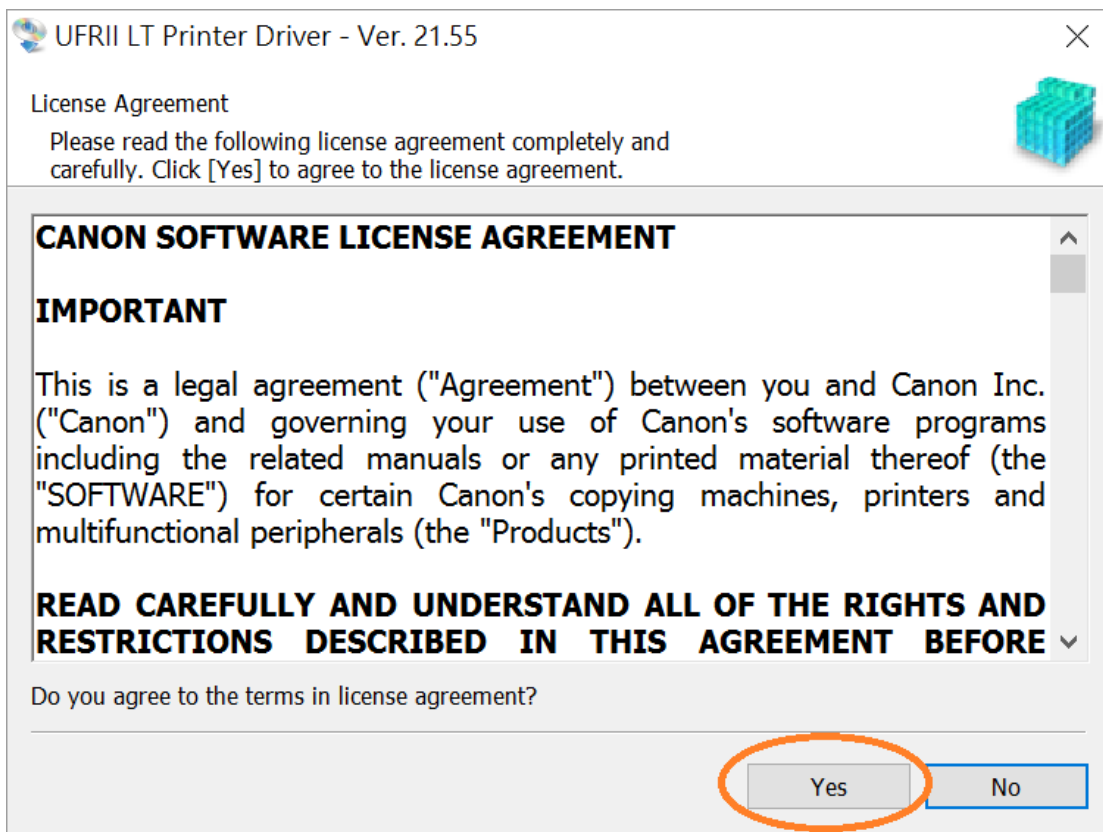
3. 打開「LBP151dw\_\*\*\*.exe」檔案。將在同一文件夾中創建新文件夾，如打開文件解壓縮時出現「使用者帳戶控制」選項，按「是」，打開「LBP151dw\_\*\*\*」文件夾  
Open “LBP151dw\_\*\*\*.exe” file, a new folder will be created. If “User Account Control” window pop-up, click “Yes”, open “LBP151dw\_\*\*\*” file folder



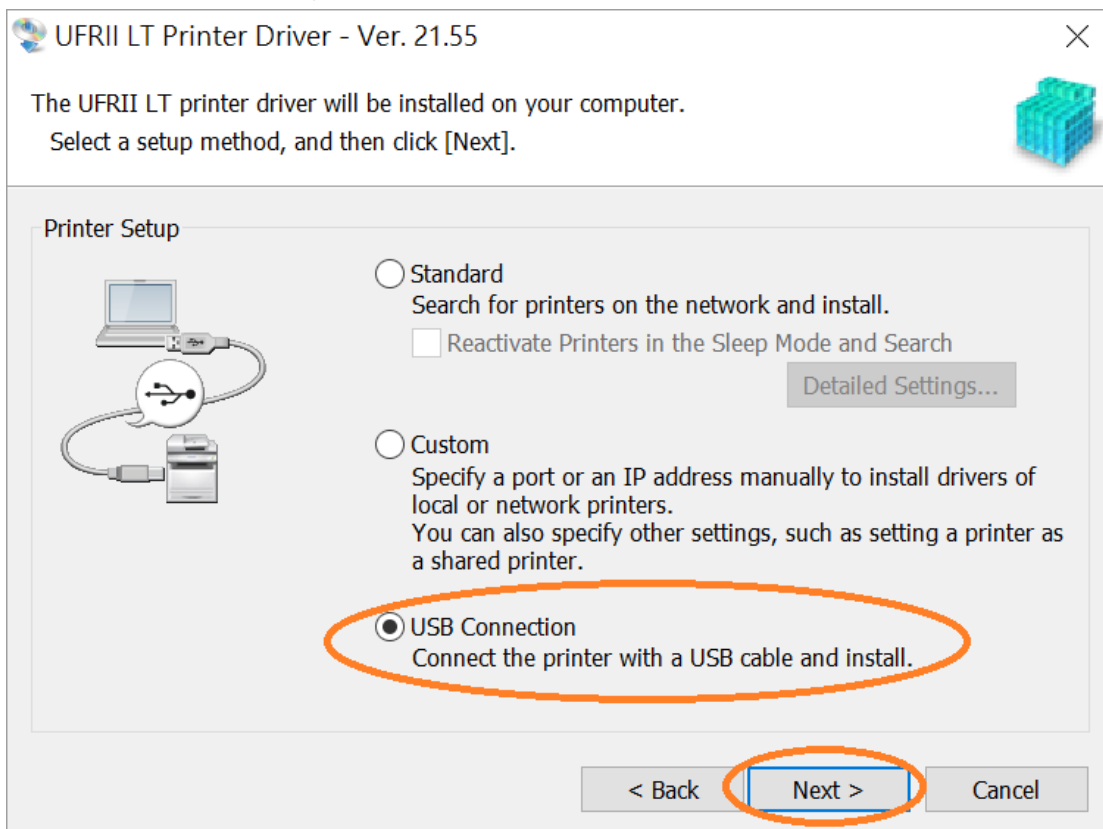
4. 打開以下文件夾，「UFR11」>「uk\_eng」>「32bit」或「x64」文件夾，開啓“Setup.exe”檔案  
Open following folders “UFR11” > “uk\_eng” > “32bit” or “x64”, open “Setup.exe” file



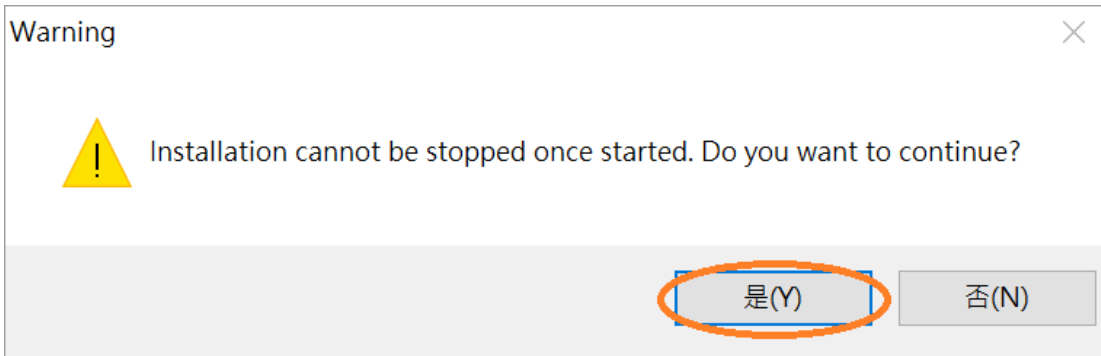
5. 按「Yes」  
Click “Yes”



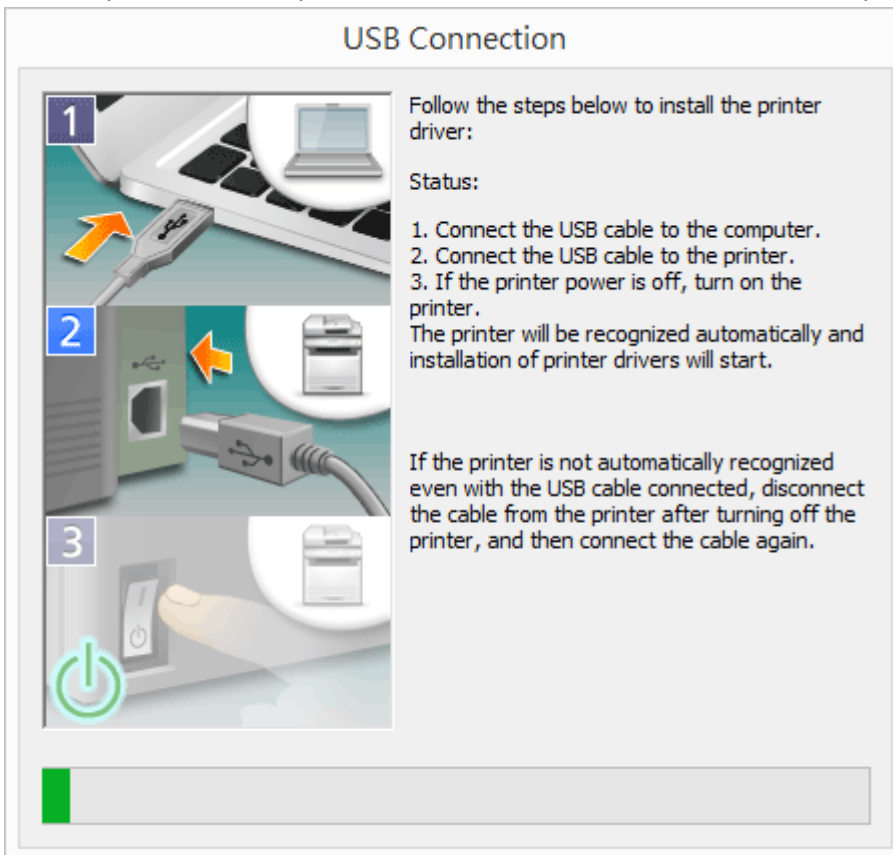
6. 選「USB Connection」，按「Next >」  
Choose “USB Connection”, click “Next >”



7. 按「是(Y)」  
Click "Yes(Y)"

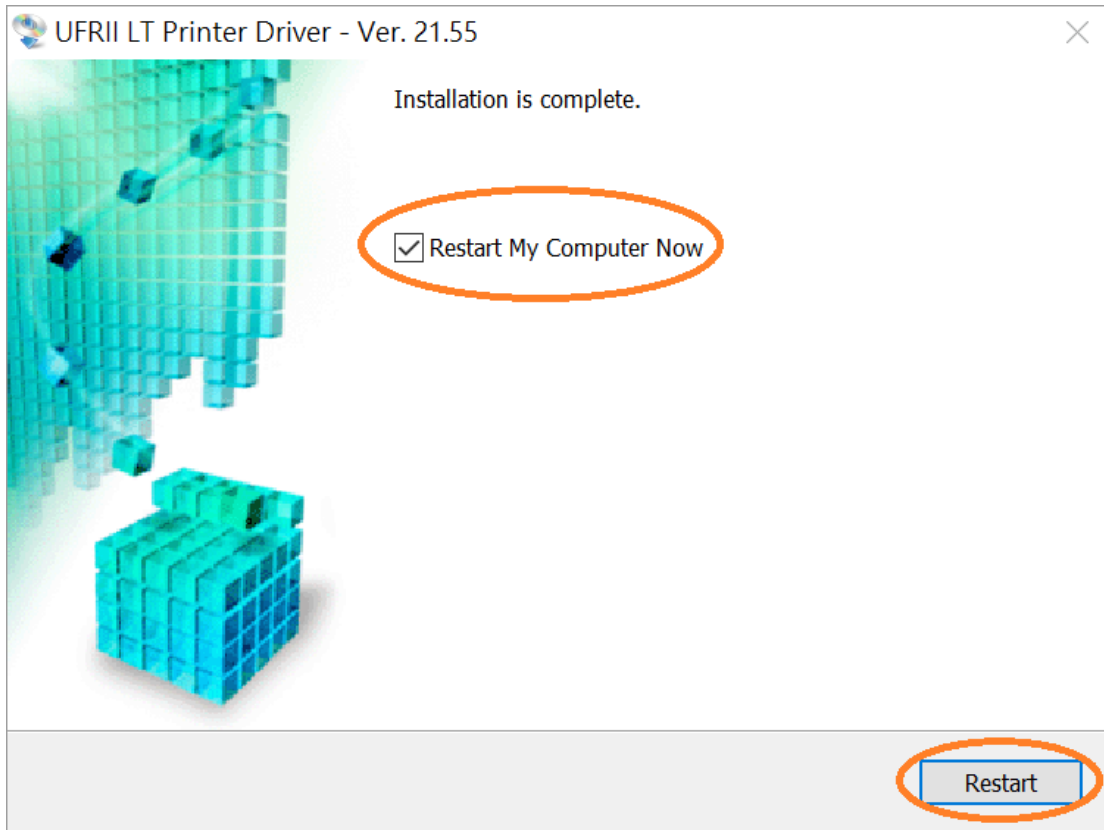


8. 以 USB 線接駁打印機及電腦，然後開啟打印機  
Connect printer and computer with the USB cable, and then turn on the printer



9. 建議別選「Restart My Computer Now」，按「Restart」重新開機

We recommend to choose "Restart My Computer Now", click "Restart" to reboot computer



-完-  
-End-