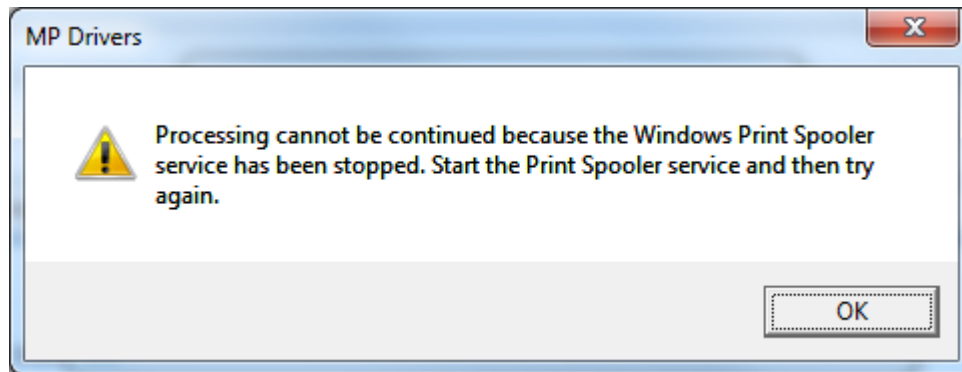




重新啟動視窗內的「列印多工緩衝處理器」服務

Restart [Print Spooler] service in Windows

當列印時出現「多工緩衝處理器」問題有關的錯誤訊息時，您可參考以下步驟重新啟動 Windows 內的「列印多工緩衝處理器(Print Spooler)」服務。

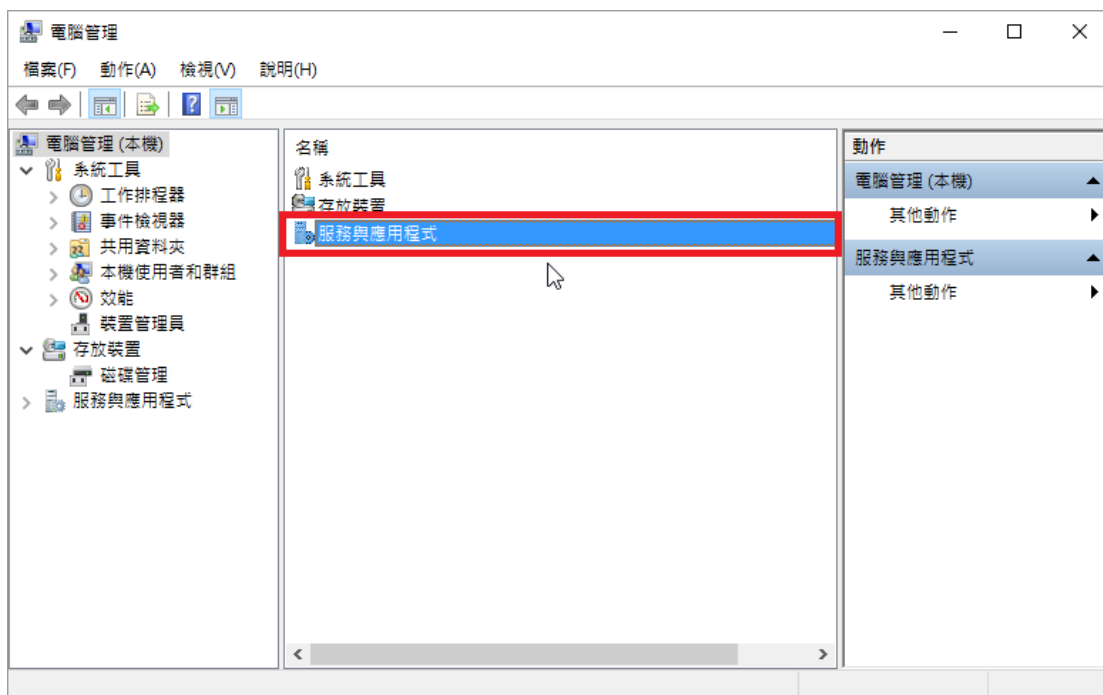
When you see an error message about "spooler" problem, you can follow the steps below to restart the "Print Spooler" service.



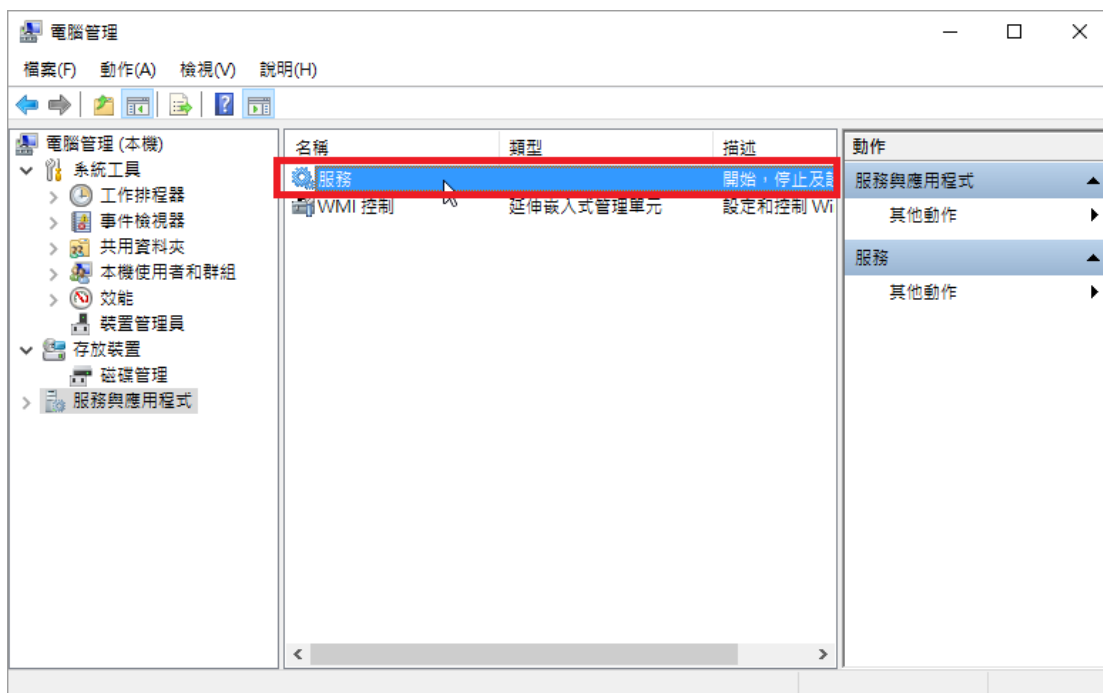
1. 請以系統管理員身分登入 Windows。
Please login as an Administrator.
2. 使用鍵盤上的 Windows 標誌鍵  + E 叫出 Windows 檔案總管，再用滑鼠右鍵點選上「本機」（Windows 8 或 Windows 10）、「電腦」（Windows 7 或 Windows Vista）或「我的電腦」（Windows XP），然後點選「管理」。
Open Windows Explorer by pressing Windows logo key  + E, right click "This PC"(for Win 8 or Win 10), "Computer"(for Win 7 or Vista) or "My Computer" (for Win XP), then click "Manage".



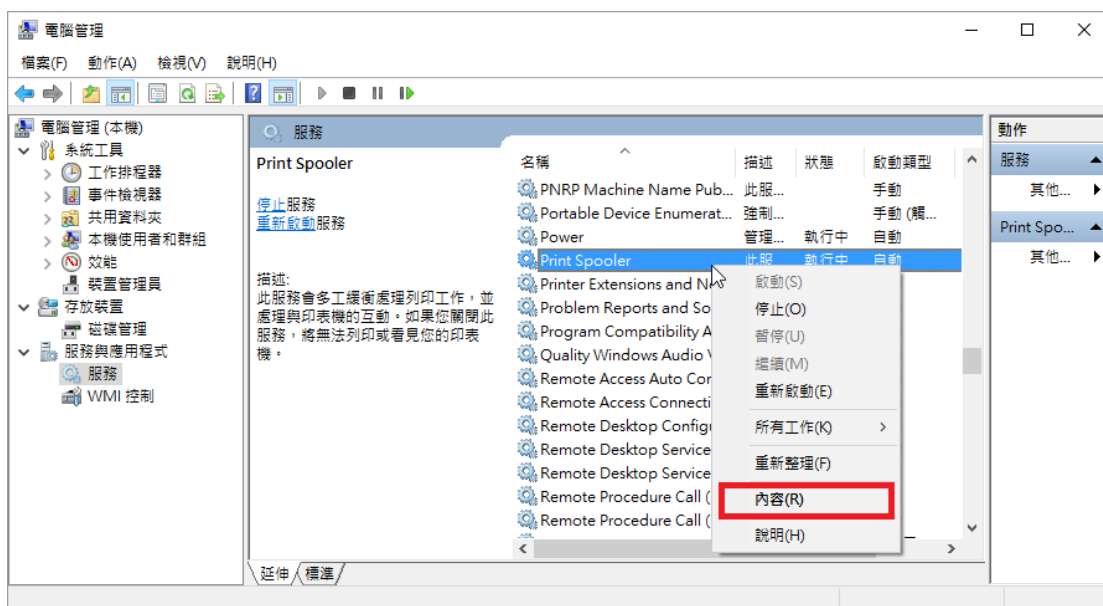
3. 電腦管理視窗出現後，如下圖所示用滑鼠左鍵雙擊「服務及應用程式」。
- After “Computer Management” screen appeared, double click “Services and Applications”.



4. 然後雙擊「服務」。
- Double-click “Service”.



5. 用滑鼠右鍵按「Print Spooler」，然後按「內容」。
Right click "Print Spooler", and then click "Properties".



6. 請檢查啟動類型是否已設成「自動」。若非「自動」，請選擇「自動」，選擇後按「套用」。

Please make sure the "Startup type" is "Auto". If not, please change to "Auto", click "Apply" after setting is finished.



7. 然後，請根據服務狀態選擇適合步驟。

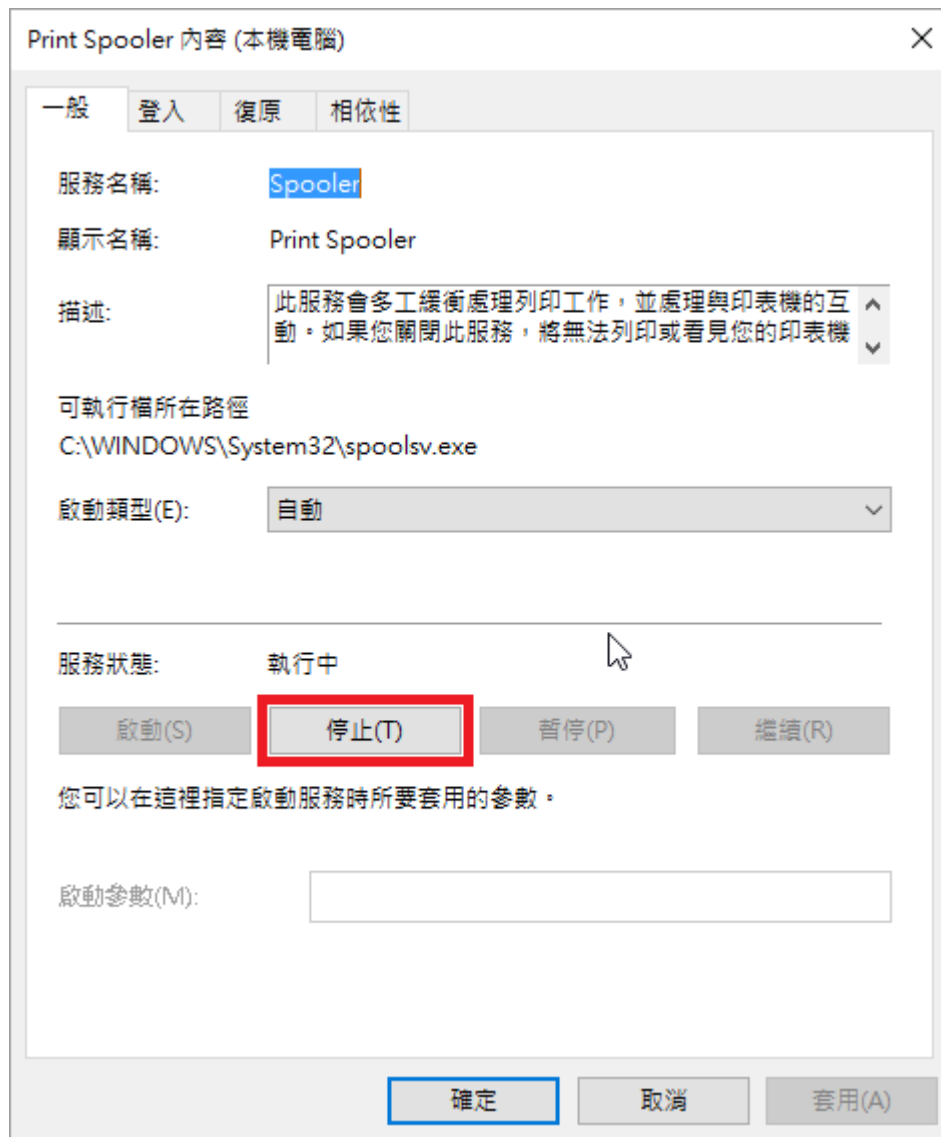
Then, do one of the followings depends on the status of "Service status".

A. 如果「服務狀態」是「已關閉」，那麼請點選「啟動」（如下圖所示）。

If "Service status" is "Stopped", please click "Start" (refer to picture below).

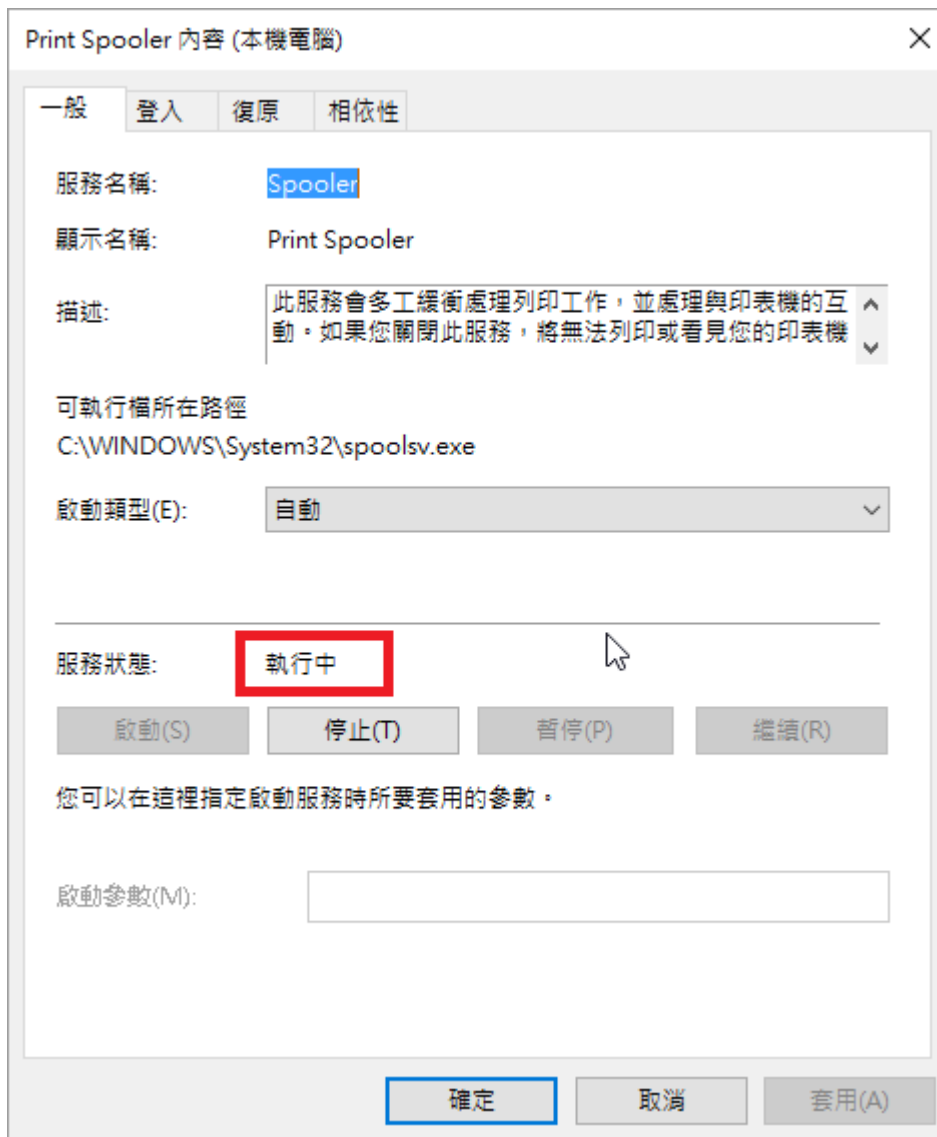


- B. 如果「服務狀態」已是「執行中」但仍出現「多工緩衝處理器」相關的錯誤訊息時，那就需要重新啟動服務。請先點選「停止」，待「服務狀態」轉為已停止後(如下圖所示畫面)，再點選「啟動」(如步驟 A 所示畫面)。
- If “Service status” is already “Started” but the printing problem still existed, you need to restart the service. Please click “Stop”. After the “Service status” changed to “Stopped”, please click “Start”.



8. 重新啟動服務，並確認服務狀態為「執行中」後，按「確定」離開。然後請再嘗試列印。

After restarted the service, please confirmed service status" is "Started", press "OK" to quit the window, and you can retry printing.



-完-

-End-