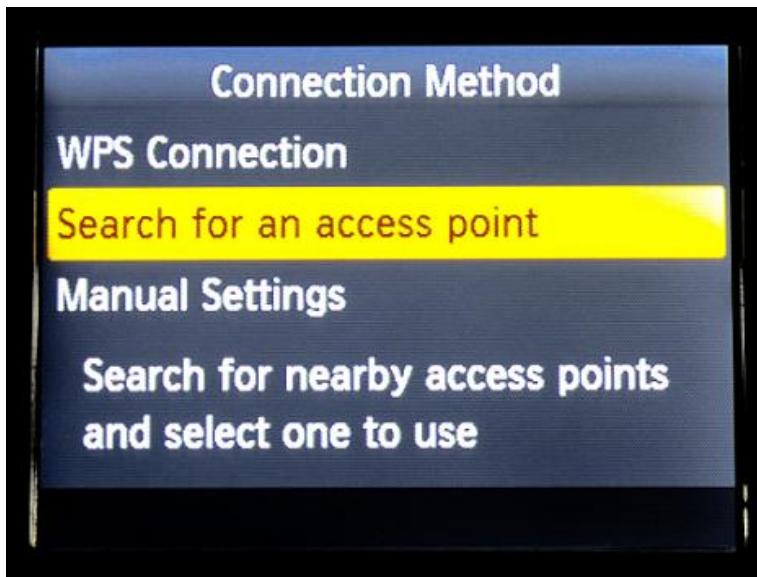


CP1200 以無線 LAN 連線連接印表機安裝驅動程式步驟 (以 Mac OSX 10.11 作示範)
The driver installation procedure for CP1200 (Via Wireless LAN) (Mac OSX 10.11 as example)

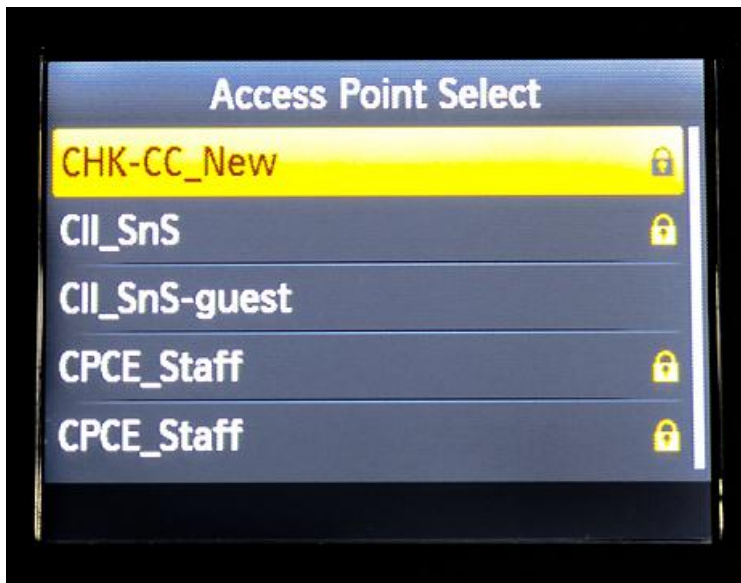
1. 於 SELPHY CP1200 選擇 [透過 Wi-Fi 網絡 (Via Wi-Fi Network)] ，然後按下 <OK> 鍵。 Press the buttons to select [Via Wi-Fi Network] , and then press the <OK> button.



2. 選擇 [搜尋存取點 (Search for an access point)] ，然後按下 <OK> 鍵。 Choose [Search for an access point] , and then press the <OK> button.



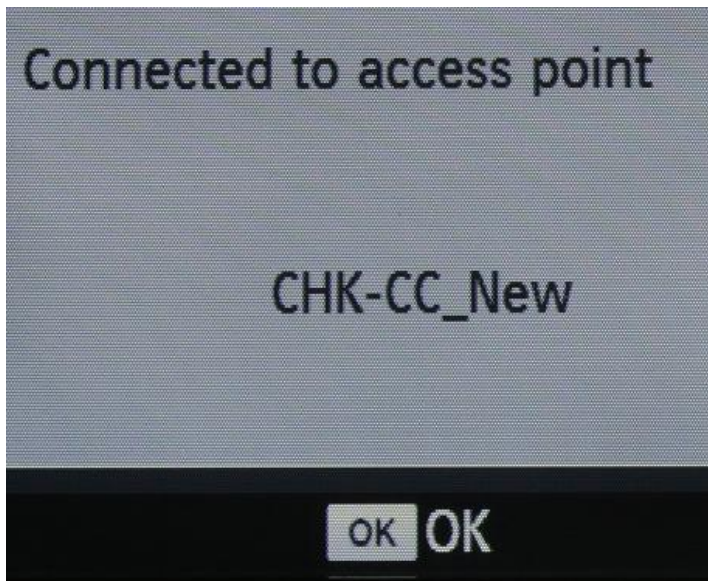
3. 螢幕會列出附近的存取點
Access points found nearby are listed



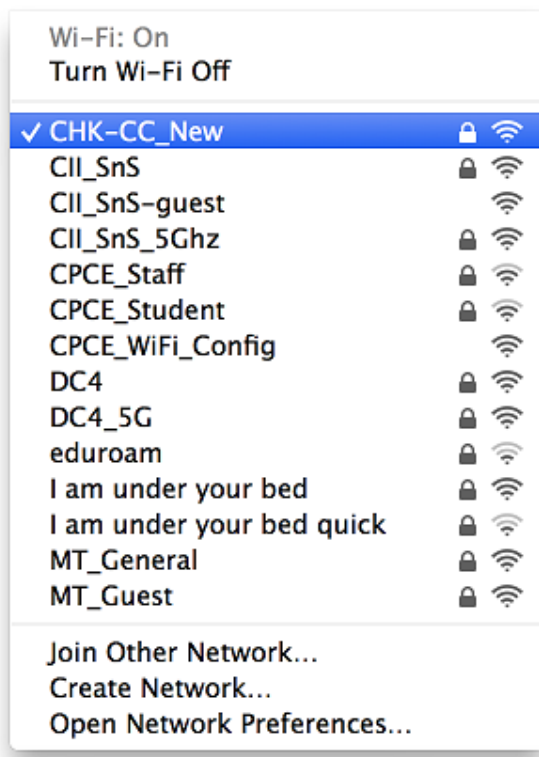
4. 輸入密碼
Enter the password





5. 印表機連接到存取點後，會顯示連接到存取點的名稱。
Once the printer is connected to the access point, the screen will display the SSID.



6. 於電腦上開啟 WIFI 並 連接與 SELPHY CP1200 相同的存取點
Turn on Wi-Fi in the computer and connect to the same access point as SELPHY CP1200

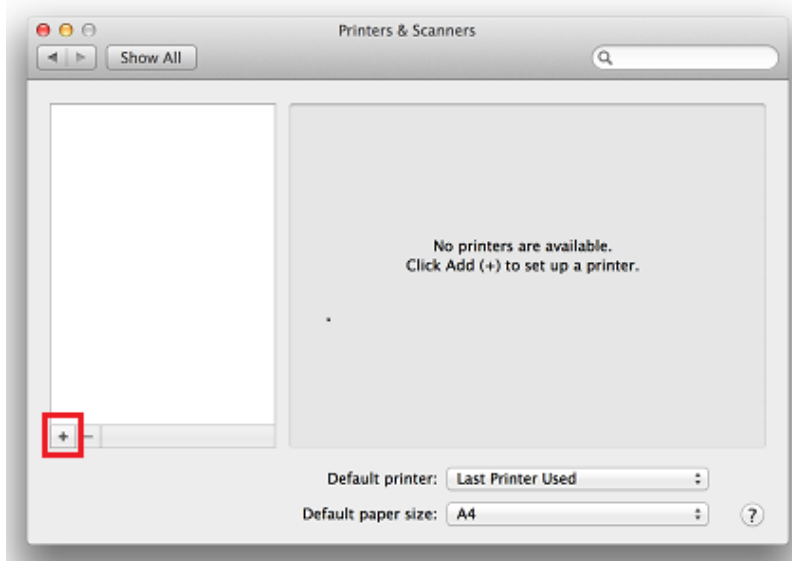


7. Wi-Fi 連接成功連接後，按一下電腦左上角 <  > 圖案，選擇 < 系統偏好設定 >，再選擇 < 印表機和掃描器 > (Printers & Scanners)。

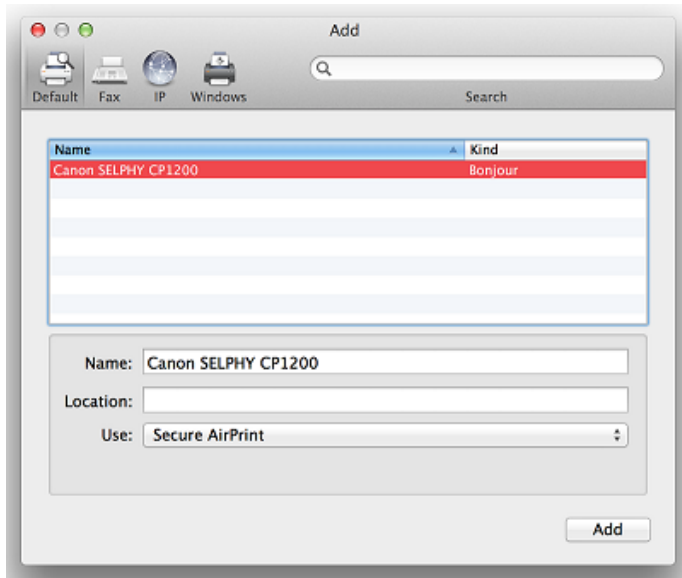
After Wi-Fi is connected, click the top left corner of the computer <  > icon, select < System Preferences >, and then select < Printers and Scanners >



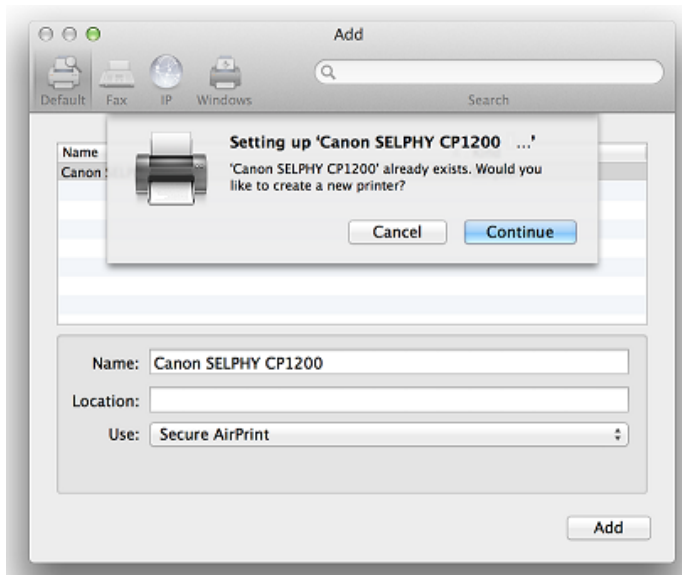
8. 於 [列印和掃描器 (Printers& Scanners)] 視窗，按一下「+」按鈕加入印表機。
In the [Printers & Scanners] window, click the "+" button to register the printer.



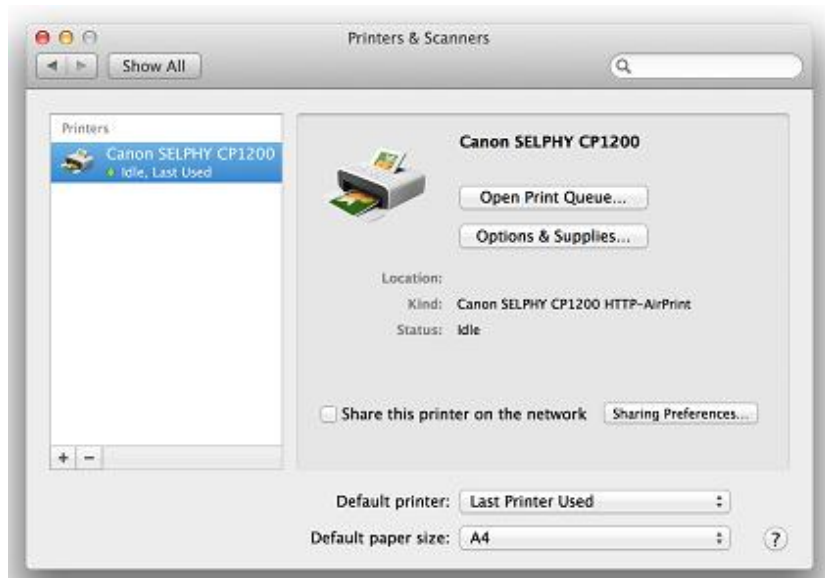
9. 選擇 Canon SELPHY CP1200，「使用」為「Secure AirPrint」，按「加入」。
Choose printer as Canon SELPHY CP1200, confirm “Use “as “Secure AirPrint”, then click “Add “.



10. 按「繼續」（Continue），等待設定完成。
Press “Continue” and waiting for setup to complete.



11. 新增印表機完成，驅動程式安裝完畢。
After the printer is added, driver installation is completed.



<完>
<END>