

SELPHY CP 1200 以直接連接連線連接印表機安裝步驟 (Mac OSX 10.11 作示範)
The installation procedure for SELPHY CP 1200 (Direct Connection) (Mac OSX 10.11 as example)

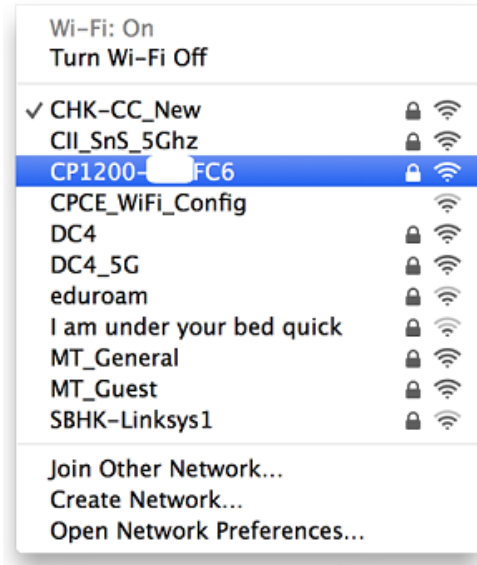
1. 於 SELPHY CP1200 選擇 [直接連接 (Direct Connection)]，然後按下 <OK> 鍵。
Press the buttons to select [Direct Connection], and then press the <OK> button.



2. 螢幕會顯示 SSID 及密碼
The screen at below is displayed SSID & password





3. 於電腦上開啟 WIFI 並 選擇 SELPHY CP1200 顯示的 SSID 存取點
Turn on Wi-Fi from a computer and connect to a access point which is shown on the SELPHY CP1200



4. 輸入 SELPHY CP1200 顯示的網路密碼，按「連接」。
Enter WIFI password, click "Join".

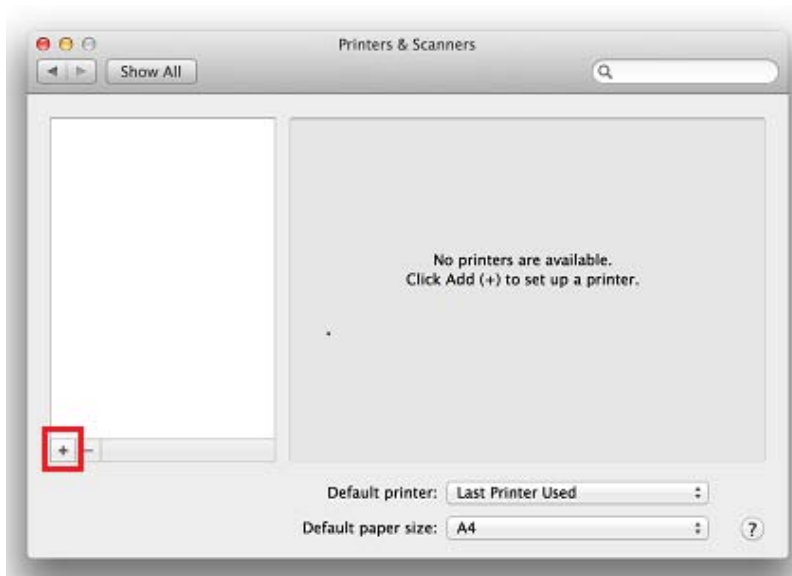


5. Wi-Fi 連接成功連接後，按一下電腦左上角 <  > 圖案，選擇 < 系統偏好設定 >，再選擇 < 印表機和掃描器 >（Printers & Scanners）。

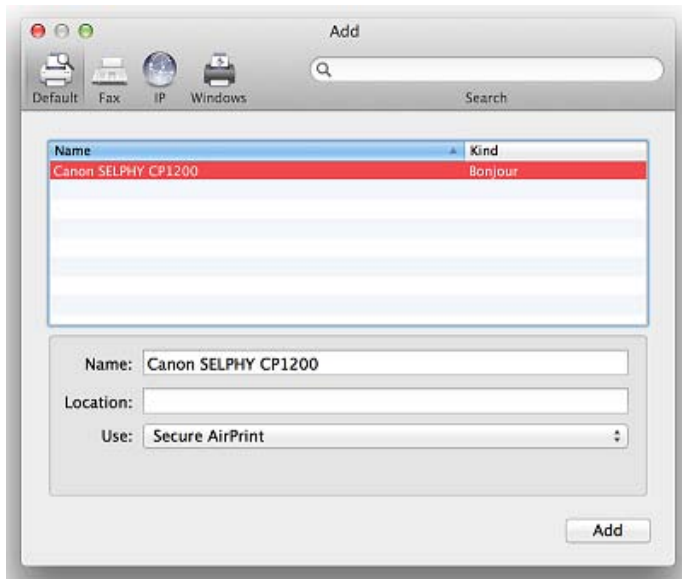
After Wi-Fi is connected, click the top left corner of the computer <  > icon, **select** < System Preferences >, and then **select** < Printers and Scanners >



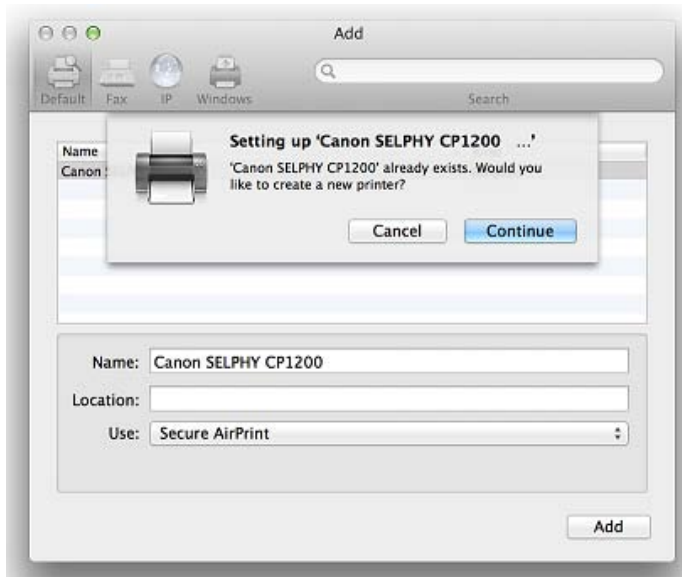
6. 於〔列印和掃描器（Printers& Scanners）〕視窗，按一下「+」按鈕加入印表機。
In the〔Printers & Scanners〕window, click the "+" button to register the printer.



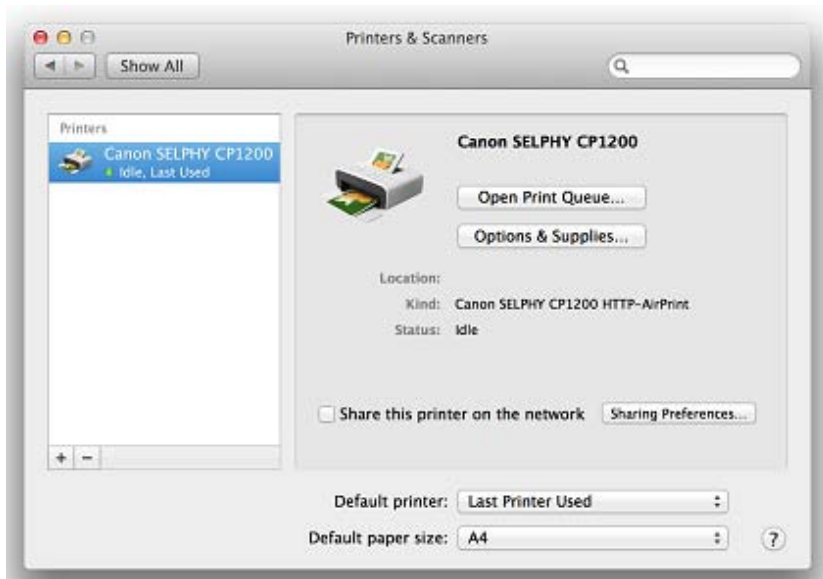
7. 選擇 Canon SELPHY CP1200，「使用」為「Secure AirPrint」，按「加入」。
Choose printer Canon SELPHY CP1200 confirm “Use “as “Secure AirPrint” then click “Add “.



8. 按「繼續」（Continue），等待設定完成
Press “Continue” and waiting for setup to complete



9. 新增印表機完成，驅動程式安裝完畢。
After the printer is added, driver installation is completed.



<完>
<END>