

MF729Cx 安裝 Win 10 透過無線 LAN 連線連接印表機之驅動程式步驟 The Driver installation procedure for MF729Cx (Via Wi-Fi)

先將打印機連接到路由器，詳細可參考以下步驟：
(The Connection by selecting a wireless router)

1. 在主畫面中點選「功能表」
(Tap “Menu” in the Home Screen)
2. 點選「網路設定」
(Tap “Network Settings”)
 - 若顯示 PIN 碼輸入畫面，請使用數字鍵輸入 PIN 碼，然後點選「套用」
 - If a screen for entering a PIN is displayed, enter the PIN with the numeric keys and tap “Apply”
3. 點選「無線區域網路」
(Tap “Select Wired/Wireless LAN” and tap Wireless LAN)
 - 若顯示 <是否啟用無線區域網路？> 訊息，點選 <是>
 - If display “DO you Want to use the wireless LAN to connect the computer?”, Tap “Yes”



4. 點選 <SSID 設定> (Tap “SSID setting”)



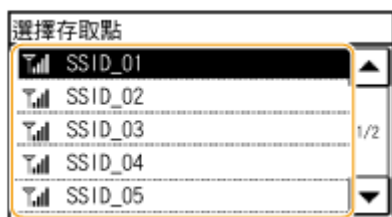
5. 點選 <選擇存取點> (Tap “Select Access Point”)



6. 選擇無線區域網路路由器

選擇與您記下的 SSID 相符的路由器

(Select the router who's SSID matches the one that you have written down)

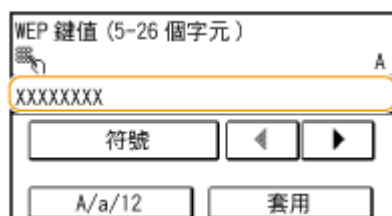


7. 輸入您記下的網路鍵值

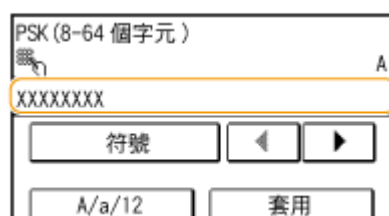
使用數字鍵輸入網路金鑰(路由器密碼)，然後點選 <套用>

(Enter the network key using the numeric keys, and tap "Apply")

WEP



WPA-PSK 或 WPA2-PSK



8. 點選 <是>

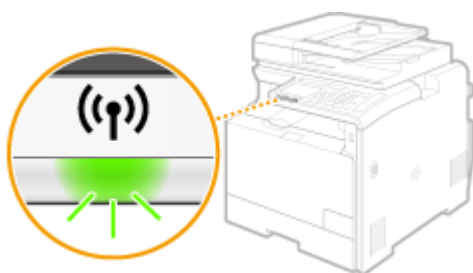
(Tap "yes" for "Do you want to connect for the new setting?")



9. 確認控制面板上的 Wi-Fi 指示燈閃爍

偵測到無線路由器時，Wi-Fi 指示燈閃爍

(The Wi-Fi indicator blinks when a wireless router is detected)



10. 設定完成時，會顯示以下畫面，約 2 秒後 Wi-Fi 指示燈隨即亮起
(When the setup is completed, the screen below is displayed, and approximately 2 seconds later, the Wi-Fi indicator lights up)



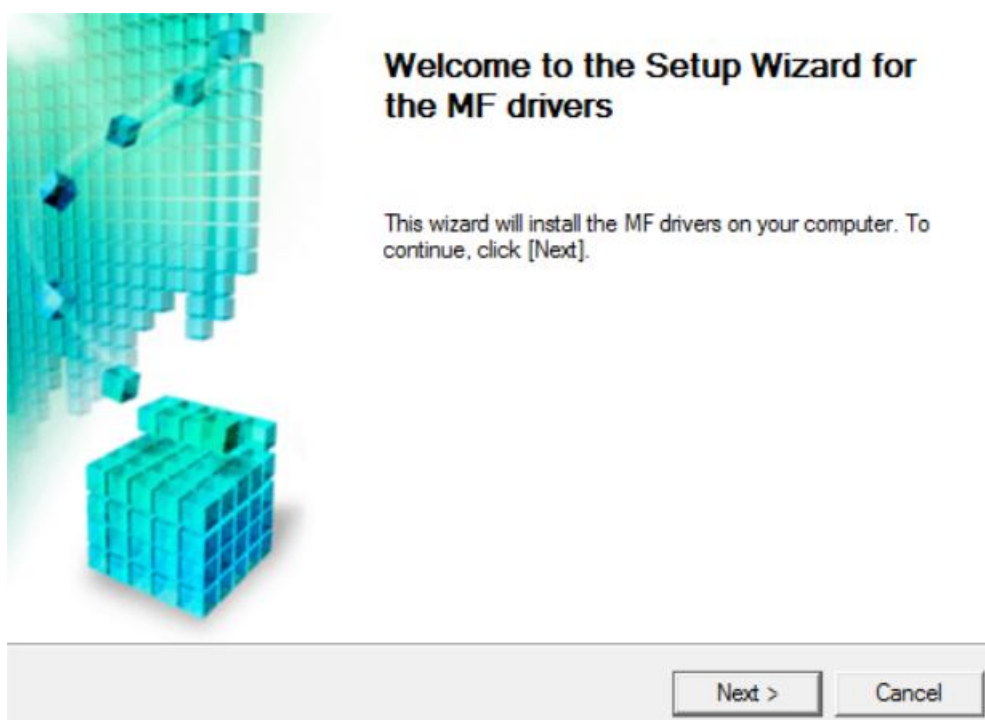
- 等待約 2 分鐘，直到本機的 IP 位址設定完成
(Wait approximately 2 minutes until the IP address settings of the machine are completed)

11. 到佳能網站 https://hk.canon/zh_HK/support/0100686201/1 (Win 32bit)
https://hk.canon/zh_HK/support/0100686301/1 (Win 64bit)，下載印表機的驅動
程式


(Go to: https://hk.canon/zh_HK/support/0100686201/1 (Win 32bit)
https://hk.canon/zh_HK/support/0100686301/1 (Win 64bit), then download
the printer driver)

12. 打開安裝驅動程式 (MF Drivers) 安裝檔案 (Open MF Driver Installation File)

13. 按「Next」(Press「Next」)



14. 按「Yes」 (Press 「Yes」)

License Agreement 

Please read the following license agreement completely and carefully. Click [Yes] to agree to the license agreement.

CANON SOFTWARE LICENSE AGREEMENT

IMPORTANT


This is a legal agreement ("Agreement") between you and Canon Inc. ("Canon") and governing your use of Canon's software programs including the related manuals or any printed material thereof (the "SOFTWARE") for certain Canon's copying machines, printers and multifunctional peripherals (the "Products").

READ CAREFULLY AND UNDERSTAND ALL OF THE RIGHTS AND RESTRICTIONS DESCRIBED IN THIS AGREEMENT BEFORE INSTALLING THE SOFTWARE. BY CLICKING THE BUTTON INDICATING YOUR ACCEPTANCE AS STATED BELOW OR INSTALLING

Do you agree to the terms in license agreement?

< Back Yes No

15. 選擇「Network Connection (for Network Models)」，按「Next」 (Choose 「Network Connection (for Network Models)」, press 「Next」)

Select the Type of Connection 

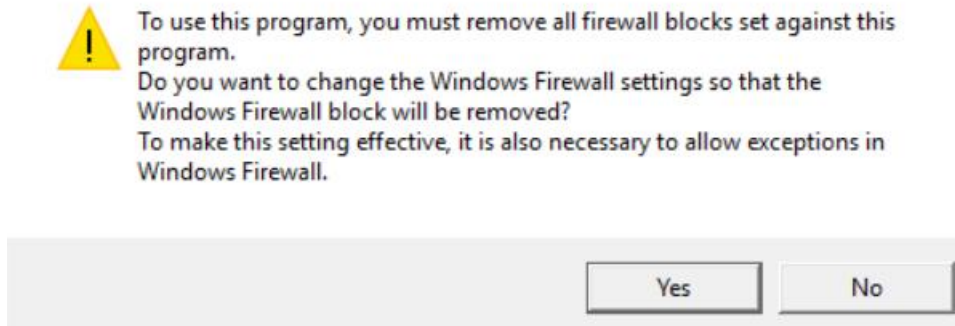
Select the type of connection between the device and your computer.

USB Connection

Network Connection (for Network Models)

< Back Next > Cancel

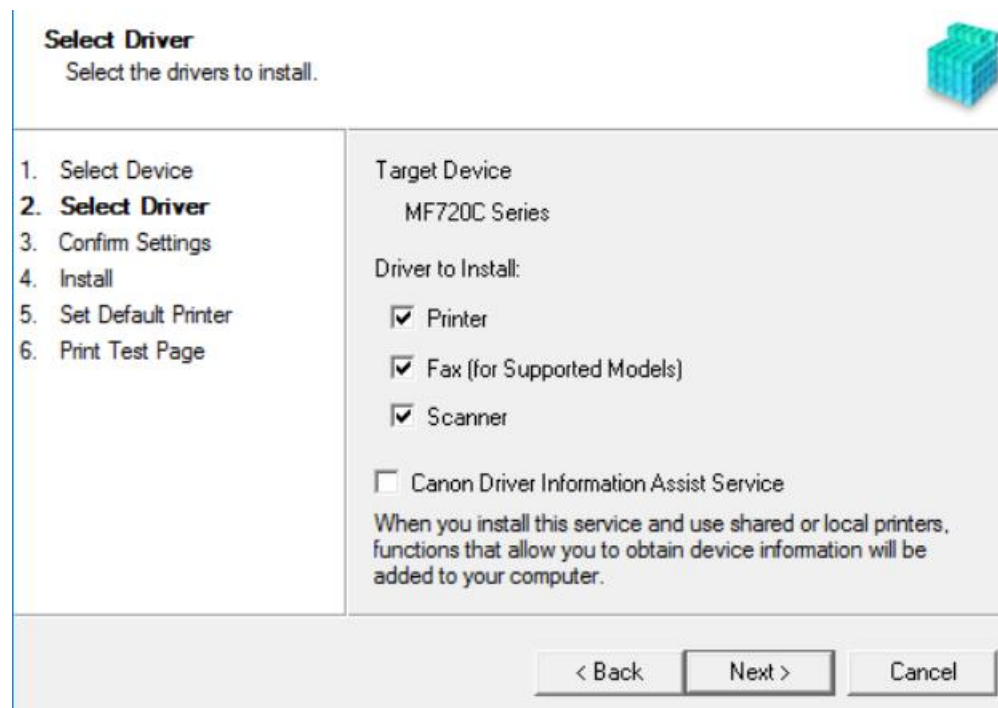
16. 確定已移除所有防火牆對此程式的封鎖設定，按「是」 (Make sure already remove all firewall blocks set against this program)



17. 搜尋裝置中(Searching for device...)



18. 確定在列表中選取印表機後按「Next」 (Select the device from the device list, press 「Next」)



21. 按「Start」(Press「Start」)

Confirm Settings

The setup program will install the drivers with the following settings.



<ol style="list-style-type: none">1. Select Device2. Select Driver3. Confirm Settings4. Install5. Set Default Printer6. Print Test Page	<p>Confirm the settings, then click [Start] to start installing.</p> <p>Items for Installation:</p> <pre>Port:CNMFNP_DC85DEE9194C Printer:Canon MF720C Series UFR II LT Driver:Canon MF720C Series UFR II LT Fax:Canon MF720C Series (FAX) Driver:Canon MF720C Series (FAX) Port:CNMFNPSCAN_DC85DEE9194C Scanner:Canon MF720C ser_DC85DEE9194C Driver:Canon MF720C Series</pre>
---	---


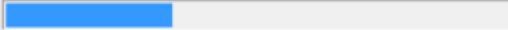
< Back Start Cancel

22. 安裝進行中 (Installing printer driver)

Install

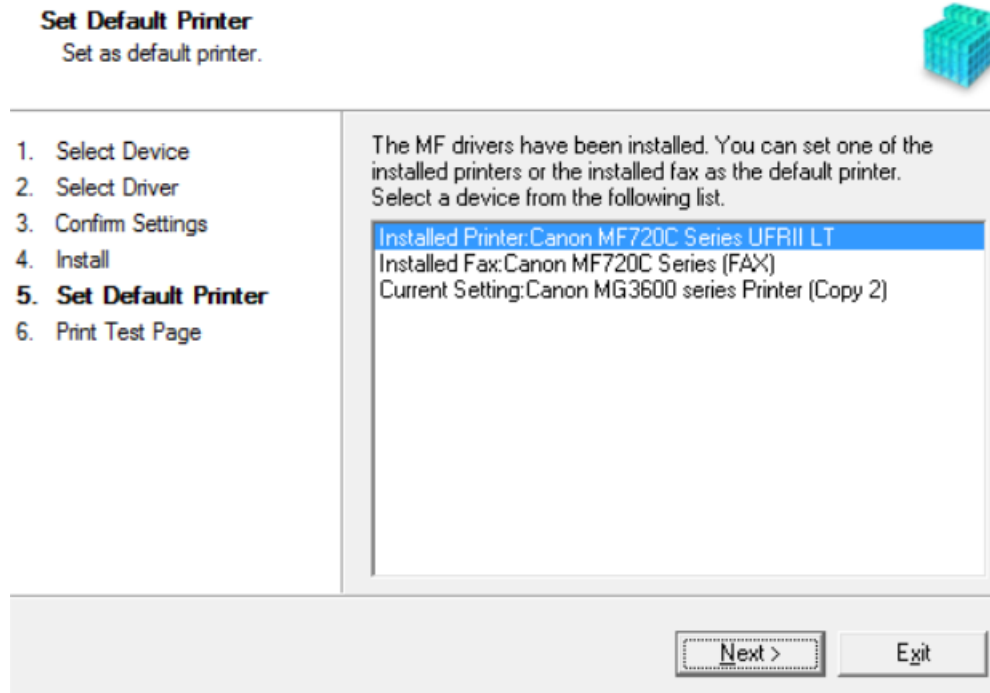
The program features you selected are being installed.



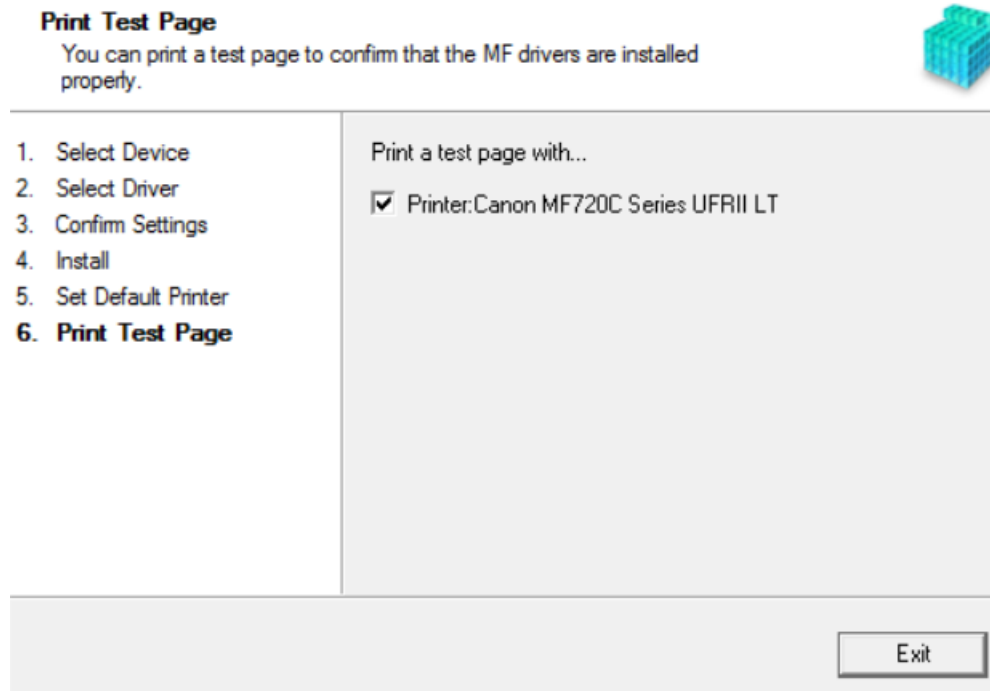
<ol style="list-style-type: none">1. Select Device2. Select Driver3. Confirm Settings4. Install5. Set Default Printer6. Print Test Page	<p> Setup Wizard is installing the MF drivers. Please wait...</p> <p>Status: Installing printer driver...</p> <p></p>
---	--

Cancel

23. 選擇已安裝的印表機成預設印表機後按「Next」(Set one of the installed printer or fax as the default printer, press「Next」)



24. 可選擇列印測試頁，按「Exit」完成安裝 (Can print a test page, press「Exit」and finish installation)

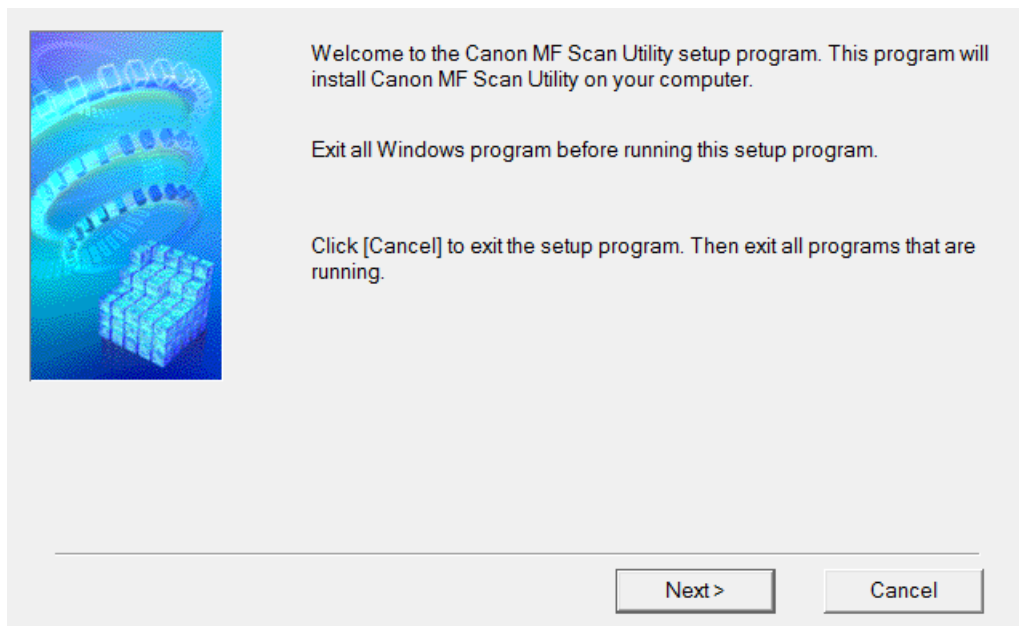


25. 到佳能網站 https://hk.canon/zh_HK/support/0200563204/3 ，下載掃描軟件 MF Scan Utility

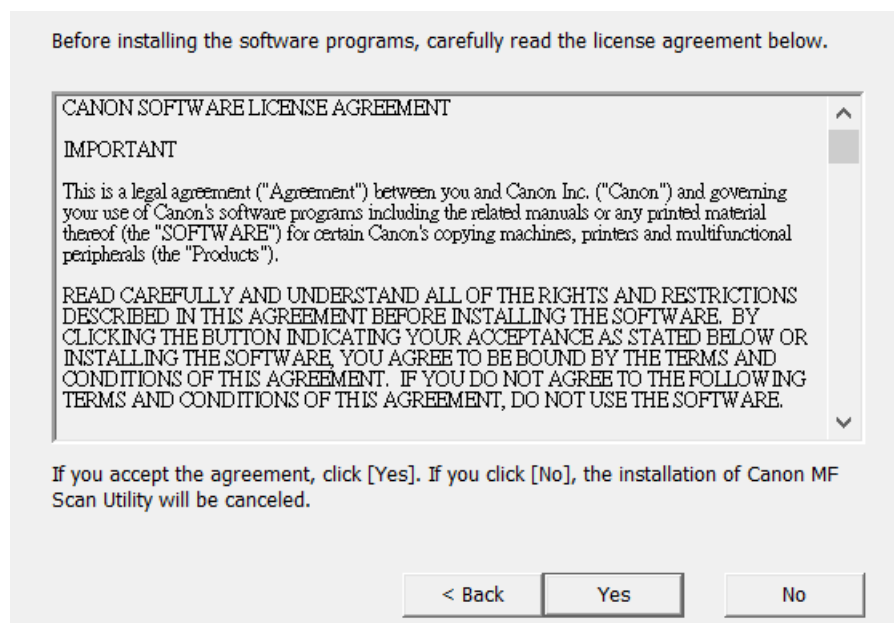
(Go to: https://hk.canon/zh_HK/support/0200563204/3, then download the scanner software MF Scan Utility)

26. 打開安裝掃描軟件 (MF Scan Utility) 安裝檔案
Open MF Scan Utility installation file

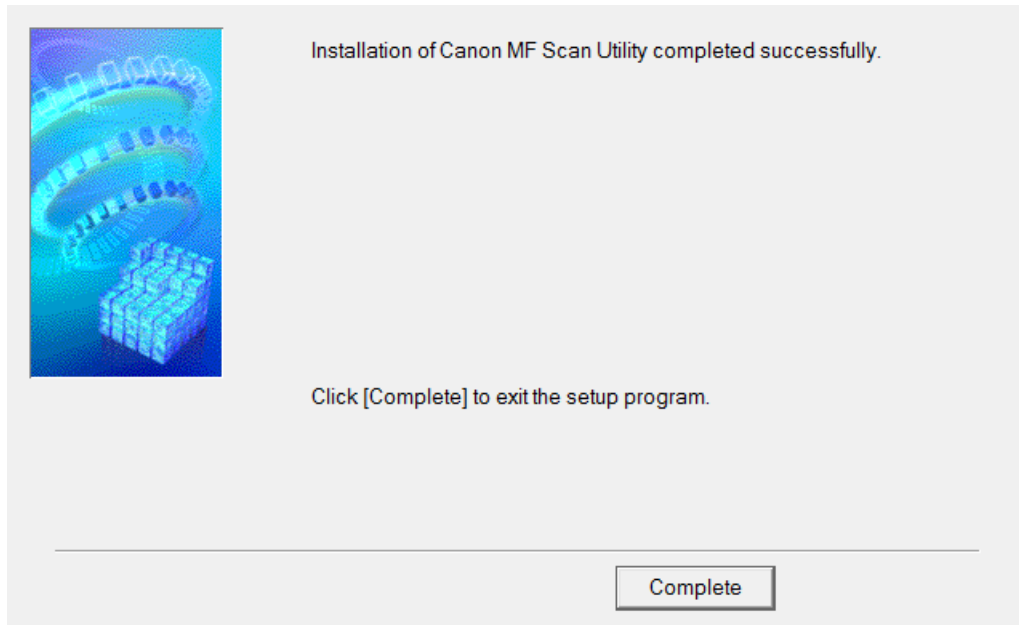
27. 按「Next」(Press「Next」)



28. 按「Yes」(Press「Yes」)



29. 按「Complete」(Press「Complete」)



-完-
-End-