

MF729cx Win 10 透過有線 LAN 連線連接印表機安裝驅動程式步驟

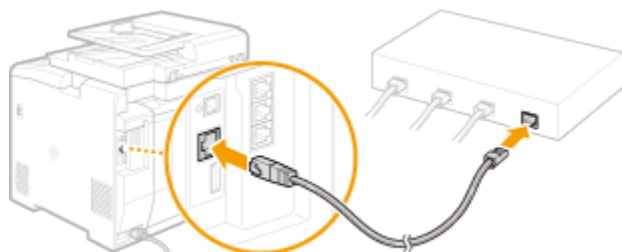
1. 先將打印機連接到網路，詳細可參考以下步驟
(Connecting to a Wired LAN)
2. 在主畫面中點選「功能表」
(Tap “Menu” in the Home Screen)
3. 點選「網路設定」
(Tap “Network Settings”)
4. 若顯示 PIN 碼輸入畫面，請使用數字鍵輸入 PIN 碼，然後點選「套用」
(If a screen for entering a PIN is displayed, enter the PIN with the numeric keys and tap “Apply”)
5. 點選「有線區域網路」
(Tap “Select Wired/Wireless LAN” and tap Wired LAN)



6. 連接區域網路纜線 (Connect a LAN cable)

使用區域網路纜線將本機連接到路由器
推入接頭，直至聽到喀嗒聲

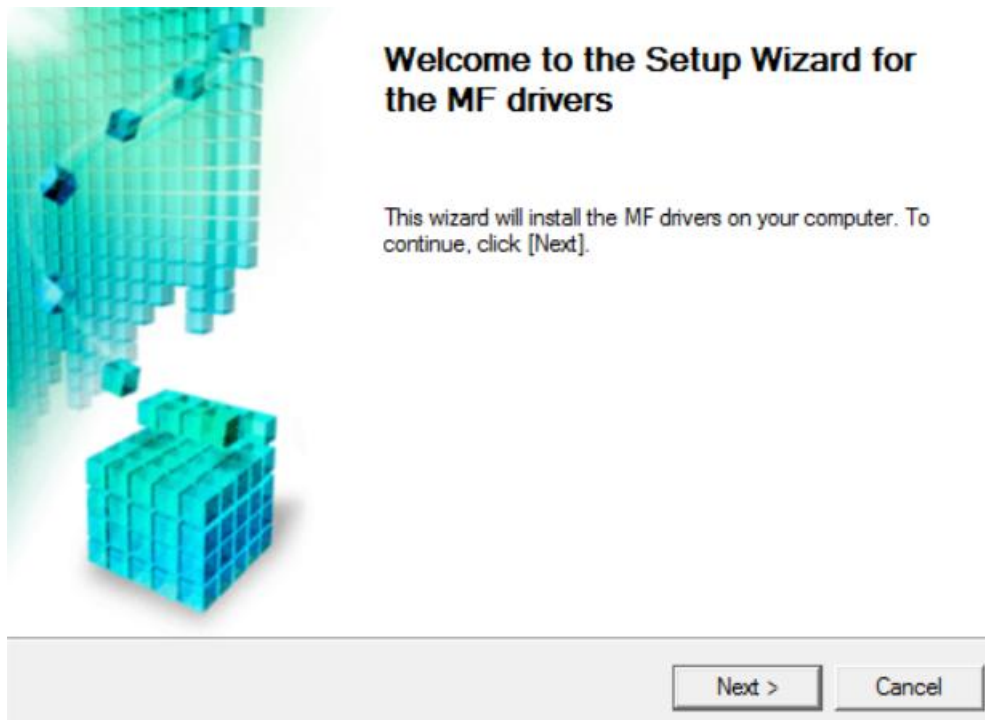
(Connect the machine to a router by using a LAN cable, push the connector in until it clicks into place)




等待約 2 分鐘 (Wait approximately 2 minutes)

等待時，會自動設定 IP 位址 (While you wait, the IP address is set automatically)

7. 到佳能網站 https://hk.canon/zh_HK/support/0100686201/1 (Win 32bit)
https://hk.canon/zh_HK/support/0100686301/1 (Win 64bit) ，下載印表機的驅動程式
(Go to: https://hk.canon/zh_HK/support/0100686201/1 (Win 32bit)
https://hk.canon/zh_HK/support/0100686301/1 (Win 64bit), then download the printer driver)
8. 打開安裝驅動程式 (MF Drivers) 安裝檔案
(Open MF Driver Installation File)
9. 按「Next」(Press 「Next」)



10. 按「Yes」(Press「Yes」)

License Agreement 

Please read the following license agreement completely and carefully. Click [Yes] to agree to the license agreement.

CANON SOFTWARE LICENSE AGREEMENT

IMPORTANT


This is a legal agreement ("Agreement") between you and Canon Inc. ("Canon") and governing your use of Canon's software programs including the related manuals or any printed material thereof (the "SOFTWARE") for certain Canon's copying machines, printers and multifunctional peripherals (the "Products").

READ CAREFULLY AND UNDERSTAND ALL OF THE RIGHTS AND RESTRICTIONS DESCRIBED IN THIS AGREEMENT BEFORE INSTALLING THE SOFTWARE. BY CLICKING THE BUTTON INDICATING YOUR ACCEPTANCE AS STATED BELOW OR INSTALLING

Do you agree to the terms in license agreement?

< Back Yes No

11. 選擇「Network Connection (for Network Models)」，按「Next」
(Choose「Network Connection (for Network Models)」, press「Next」)

Select the Type of Connection 

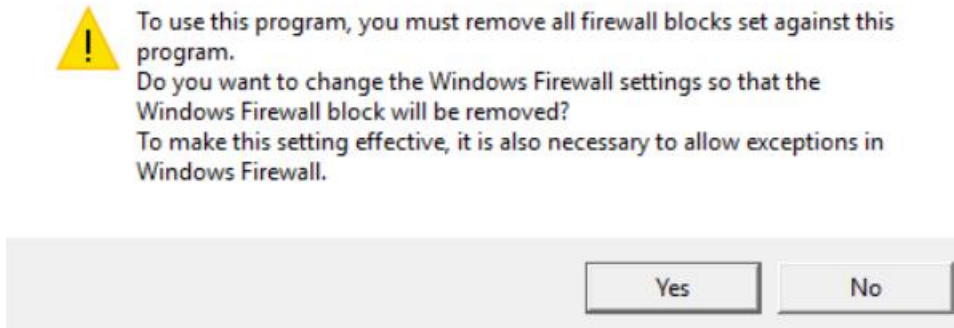
Select the type of connection between the device and your computer.

USB Connection

Network Connection (for Network Models)

< Back Next > Cancel

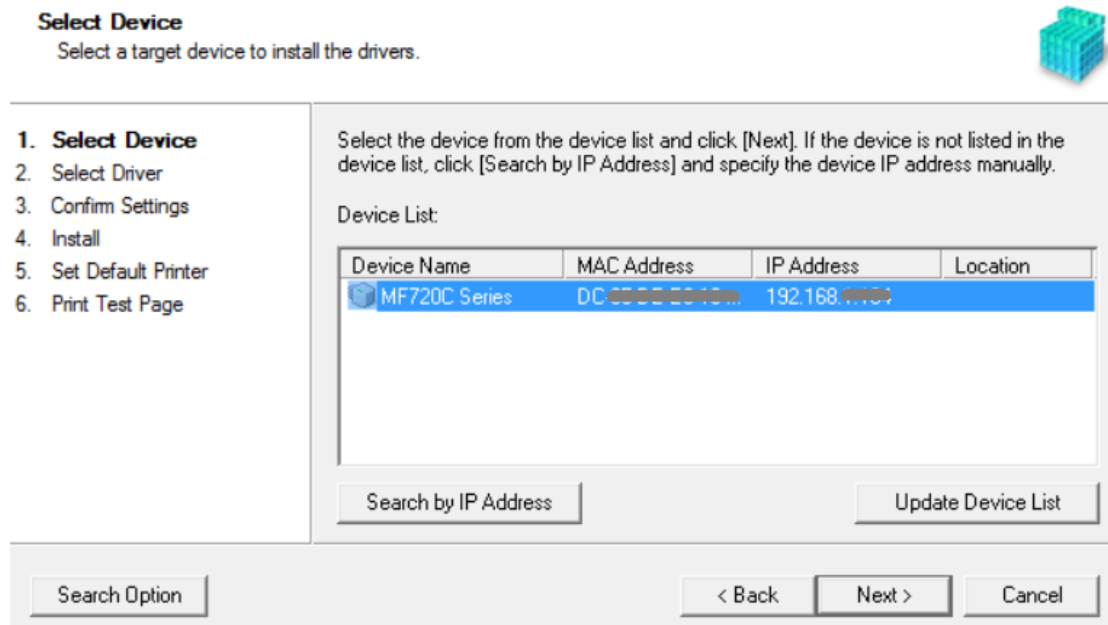
12. 確定已移除所有防火牆對此程式的封鎖設定，按「是」
(Make sure already remove all firewall blocks set against this program)



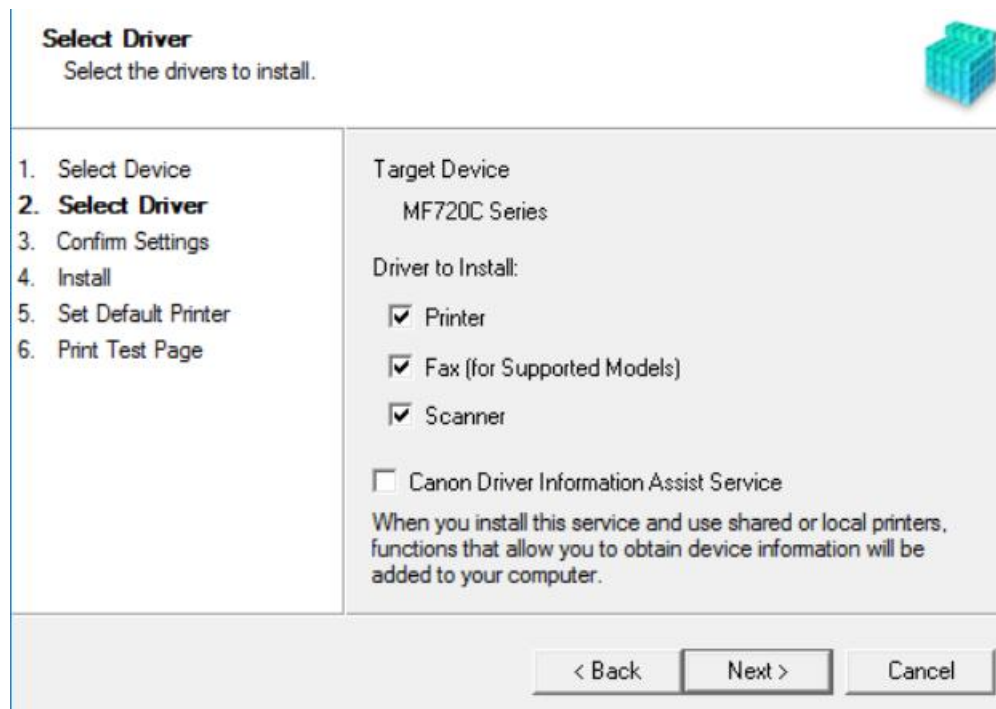
13. 搜尋裝置中 (Searching for device...)



14. 確定在列表中選取印表機後按「Next」
(Select the device from the device list, press 「Next」)



15. 建議選取所有驅動程式 (預設) , 按 「 Next 」
(Suggest choose all driver to install (Default), press 「 Next 」)



Select Driver
Select the drivers to install.

1. Select Device
2. Select Driver
3. Confirm Settings
4. Install
5. Set Default Printer
6. Print Test Page

Target Device
MF720C Series

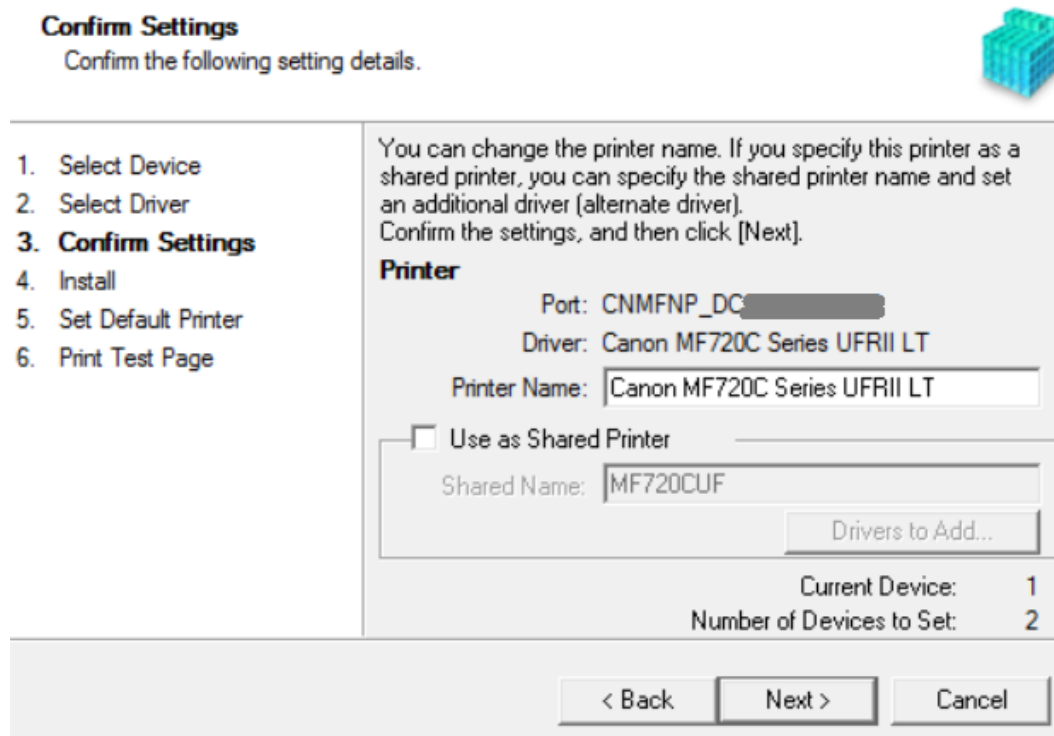
Driver to Install:

Printer
 Fax (for Supported Models)
 Scanner

Canon Driver Information Assist Service
When you install this service and use shared or local printers, functions that allow you to obtain device information will be added to your computer.

< Back Next > Cancel

16. 按 「 Next 」 (Press 「 Next 」)



Confirm Settings
Confirm the following setting details.

1. Select Device
2. Select Driver
3. Confirm Settings
4. Install
5. Set Default Printer
6. Print Test Page

You can change the printer name. If you specify this printer as a shared printer, you can specify the shared printer name and set an additional driver (alternate driver). Confirm the settings, and then click [Next].

Printer

Port: CNMFNP_DC[REDACTED]
Driver: Canon MF720C Series UFR II LT
Printer Name: Canon MF720C Series UFR II LT


Use as Shared Printer
Shared Name: MF720CUF
Drivers to Add...

Current Device: 1
Number of Devices to Set: 2

< Back Next > Cancel

17. 按「Next」(Press「Next」)

Confirm Settings
Confirm the following setting details.




<ol style="list-style-type: none">Select DeviceSelect DriverConfirm SettingsInstallSet Default PrinterPrint Test Page	<p>You can change the fax name. If you specify this fax as a shared fax, you can specify the shared fax name and set an additional driver (alternate driver). Confirm the settings, and then click [Next].</p> <p>Fax</p> <p>Port: CNMFNP_DC[REDACTED] Driver: Canon MF720C Series (FAX) Fax Name: Canon MF720C Series (FAX)</p> <p><input type="checkbox"/> Use as Shared Fax</p> <p>Shared Name: MF720CFA</p> <p>Drivers to Add...</p> <p>Current Device: 2 Number of Devices to Set: 2</p>
---	--

< Back Next > Cancel

18. 按「Start」(Press「Start」)

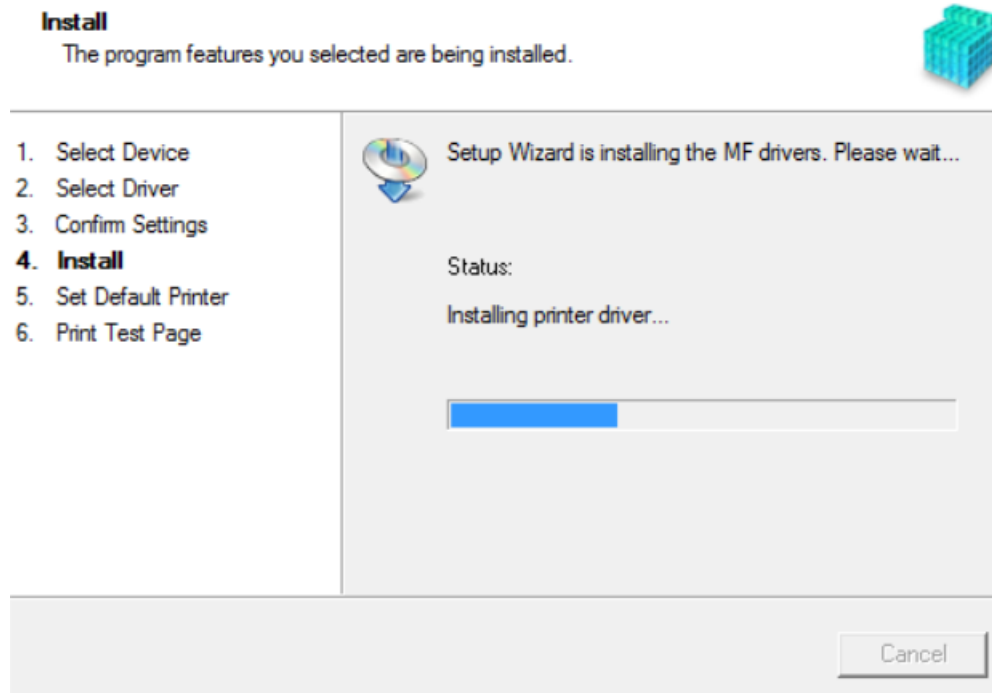
Confirm Settings
The setup program will install the drivers with the following settings.



<ol style="list-style-type: none">Select DeviceSelect DriverConfirm SettingsInstallSet Default PrinterPrint Test Page	<p>Confirm the settings, then click [Start] to start installing.</p> <p>Items for Installation:</p> <p>Port:CNMFNP_DC[REDACTED] Printer:Canon MF720C Series UFR II LT Driver:Canon MF720C Series UFR II LT Fax:Canon MF720C Series (FAX) Driver:Canon MF720C Series (FAX) Port:CNMFNPSCAN_DC[REDACTED] Scanner:Canon MF720C ser_DC[REDACTED] Driver:Canon MF720C Series</p>
---	---

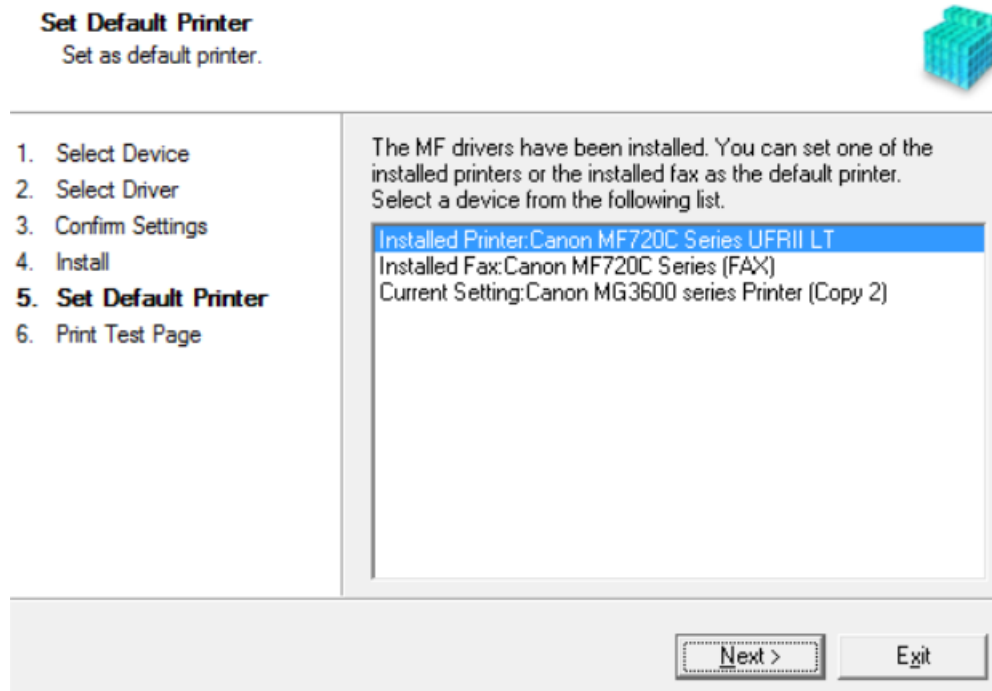
< Back Start Cancel

19. 安裝進行中 (Installing printer driver)

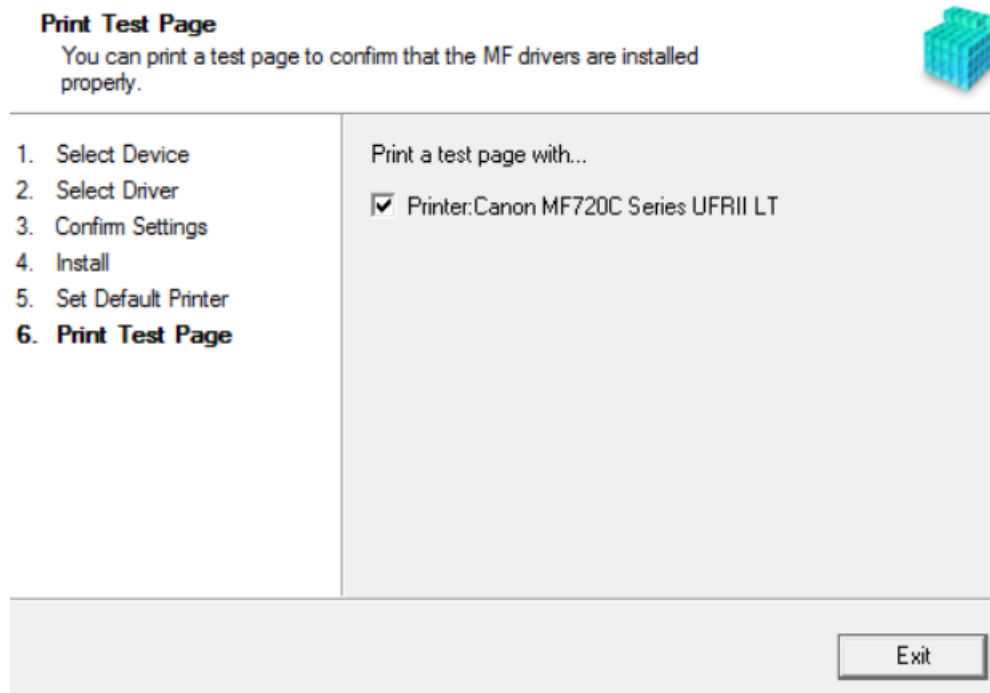


20. 選擇已安裝的印表機成預設印表機後按「Next」

(Set one of the installed printer or fax as the default printer, press 「Next」)



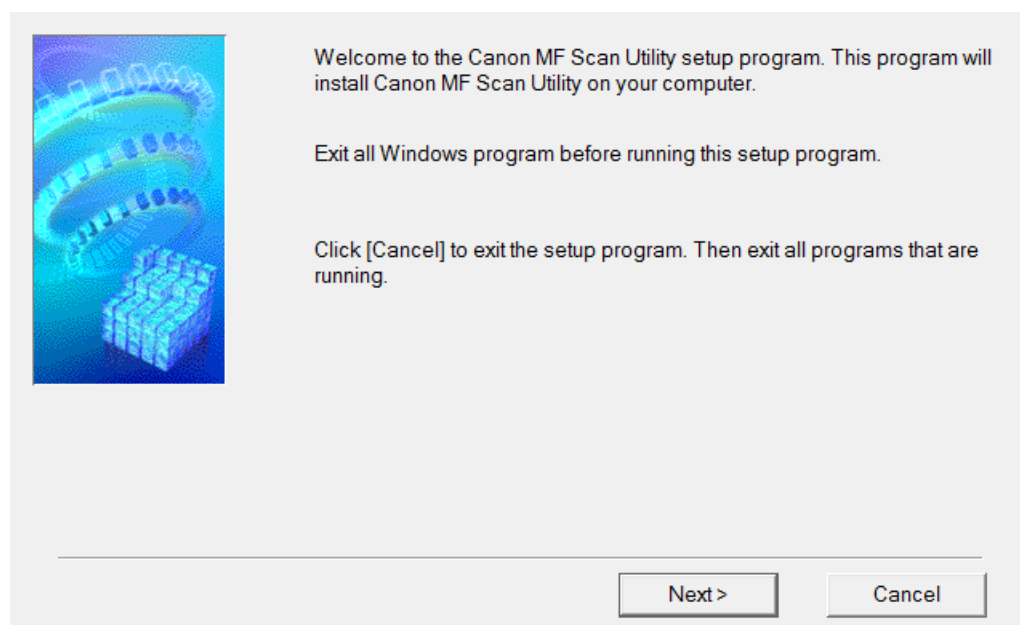
21. 可選擇列印測試頁，按「Exit」完成 (Can print a test page, press 「Next」 and finish installation)



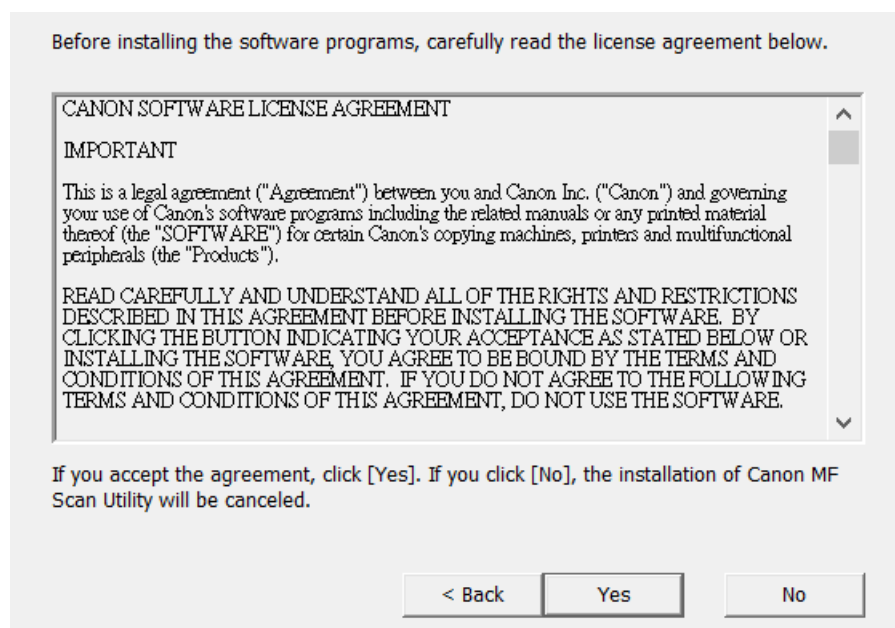
22. 到佳能網站 https://hk.canon/zh_HK/support/0200563204/3，下載掃描軟件 MF Scan Utility
(Go to: https://hk.canon/zh_HK/support/0200563204/3 , download the scanner software MF Scan Utility)

23. 打開安裝掃描軟件 (MF Scan Utility) 安裝檔案 (Open MF Scan Utility installation file)

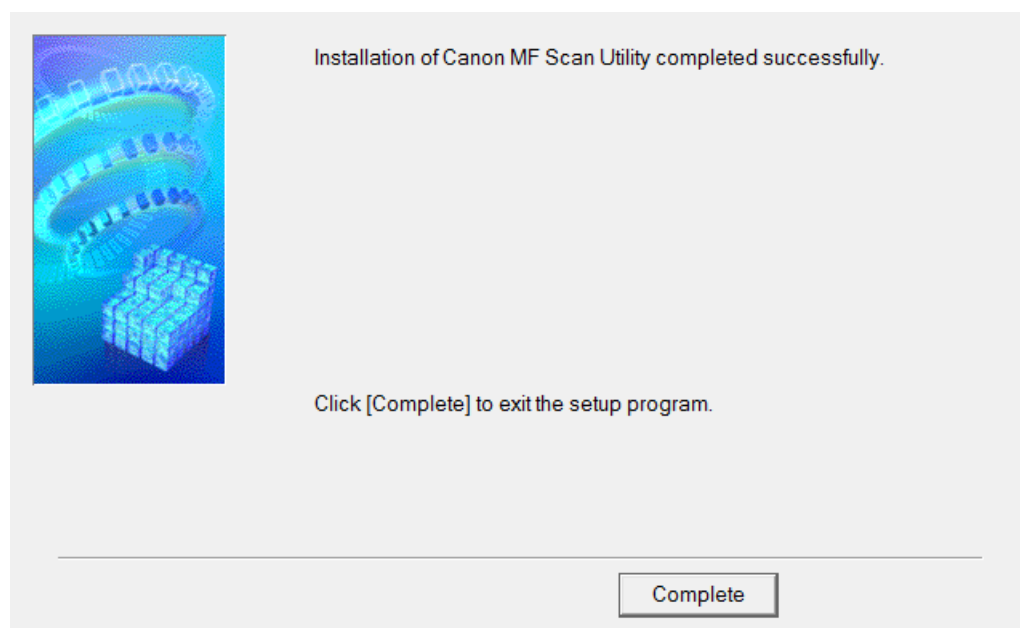
24. 按「Next」 (Press 「Next」)



25. 按「Yes」(Press「Yes」)



26. 按「Complete」(Press「Complete」)



-完-
-End-