

MF6180DW 接收傳真轉寄SMB步驟

MF6180DW FAX to SMB Procedure

先根據Microsoft 網上說明設定「共用資料夾」：
Follow Microsoft Online FAQ Setting “Share Folder”

Windows 7 -

中文說明:

<http://windows.microsoft.com/zh-hk/windows/share-files-with-someone#1TC=windows-7>

English Instruction:

<http://windows.microsoft.com/en-us/windows/share-files-with-someone#1TC=windows-7>

Windows 8/8.1 -

中文說明:

<http://windows.microsoft.com/zh-HK/windows-8/share-files-folders>

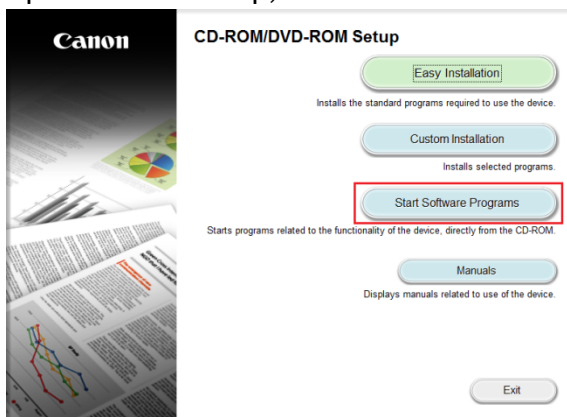
English Instruction:

<http://windows.microsoft.com/en-us/windows-8/share-files-folders>

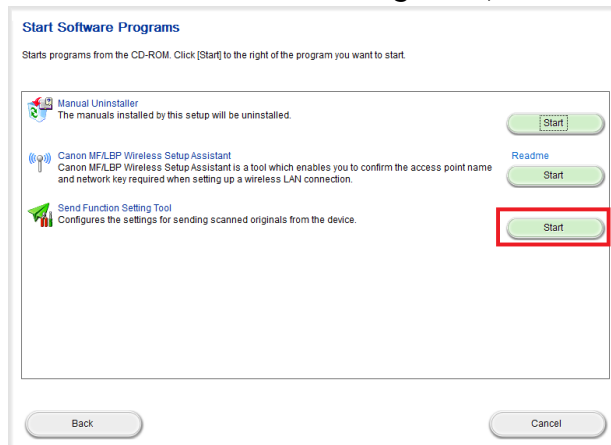
以驅動程式安裝光碟啟動 Send Function Setting Tool

Use Bundle CD activate Send Function Setting Tool

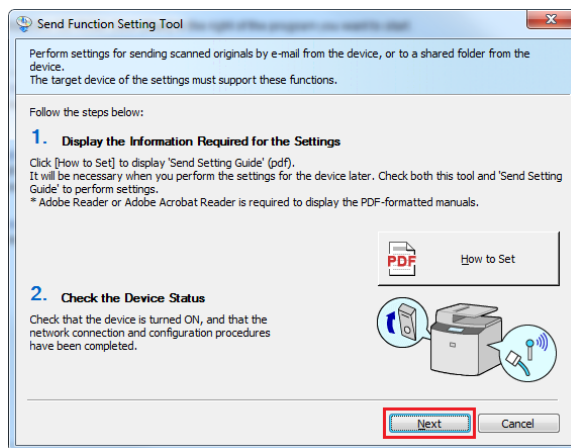
1. 開啟光碟，選「Start Software Programs」
Open CD-Rom Setup, click “Start Software Programs”



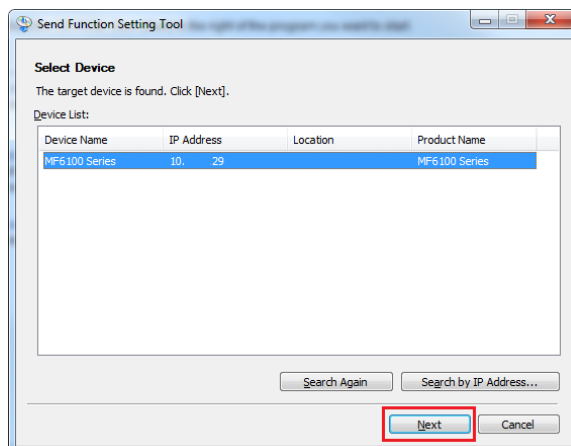
2. 選擇「Send Function Setting Tool」，點擊「Start」
Select “Send Function Setting Tool”, click “Start”



3. 按「Next」
Click “Next”

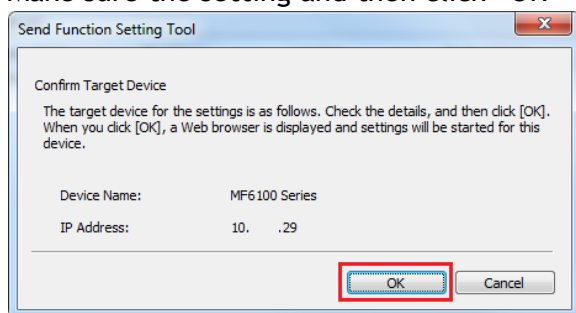


4. 選擇印表機後按「Next」
Select the machine then click “Next”



5. 確定設定後按「OK」

Make sure the setting and then click “OK”



使用Send Function Setting Tool設定目標資料夾

Use Send Function Setting Tool setup target destination

1. 按「開始」

click “Start”



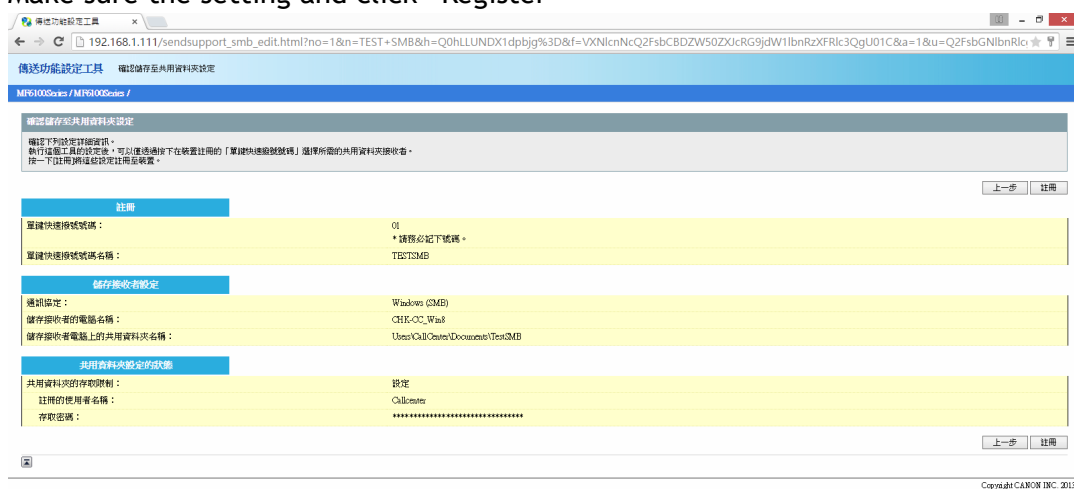
2. 選擇「儲存至共用資料夾設定」 Choose “Store to Shared folder Settings”



3. 到達此版面後須輸入所需資料，包括早前設定的電腦名稱 / 共用資料夾路徑，完成後按「下一步」

Register the file server that you use. Include computer name and shared folder name. Finish then click “Next”

4. 確定資料正確後按「註冊」 Make sure the setting and click “Register”



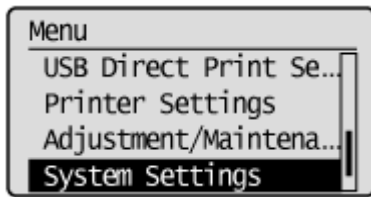
5. 儲存至共用資料夾設定已完成 Store to share Folder setting success.



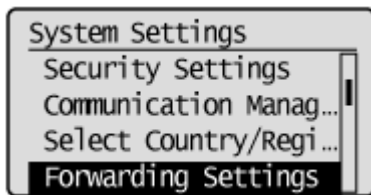
設定傳真轉傳設定 Setting FAX Document Forward Setting

1. 按 [] 功能表
Press [] (Menu).

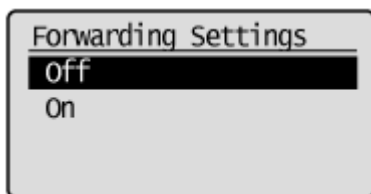
2. 選擇「系統設定」，按「OK」
Select “System Settings”, press “OK”



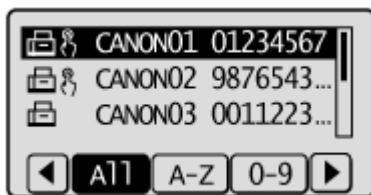
3. 選擇「轉傳設定」，按「OK」
Select “Forwarding Settings”, press “OK”





4. 選擇「開」，按「OK」
Select “On”, press “OK”



5. 選擇已登記的SMB位址，按「OK」
Select registered SMB location, press “OK”



6. 按[]回到待機畫面，轉傳設定已完成
Press [] to close the menu screen, FAX forward setting finished

-完-

-End-